



*The Key to Success*

for Alaskan Educators Serving Students  
with Low-Incidence Disabilities



# Special Education Service Agency

**SESA provides consultation and training to support the unique educational needs of individuals and the Alaskan communities that serve them.**

## 2004 Individuals with Disabilities Education Act (IDEA)

The Legislature intended for SESA to help DEED fulfill IDEA's requirements by assisting schools with providing special education to children affected by LID.



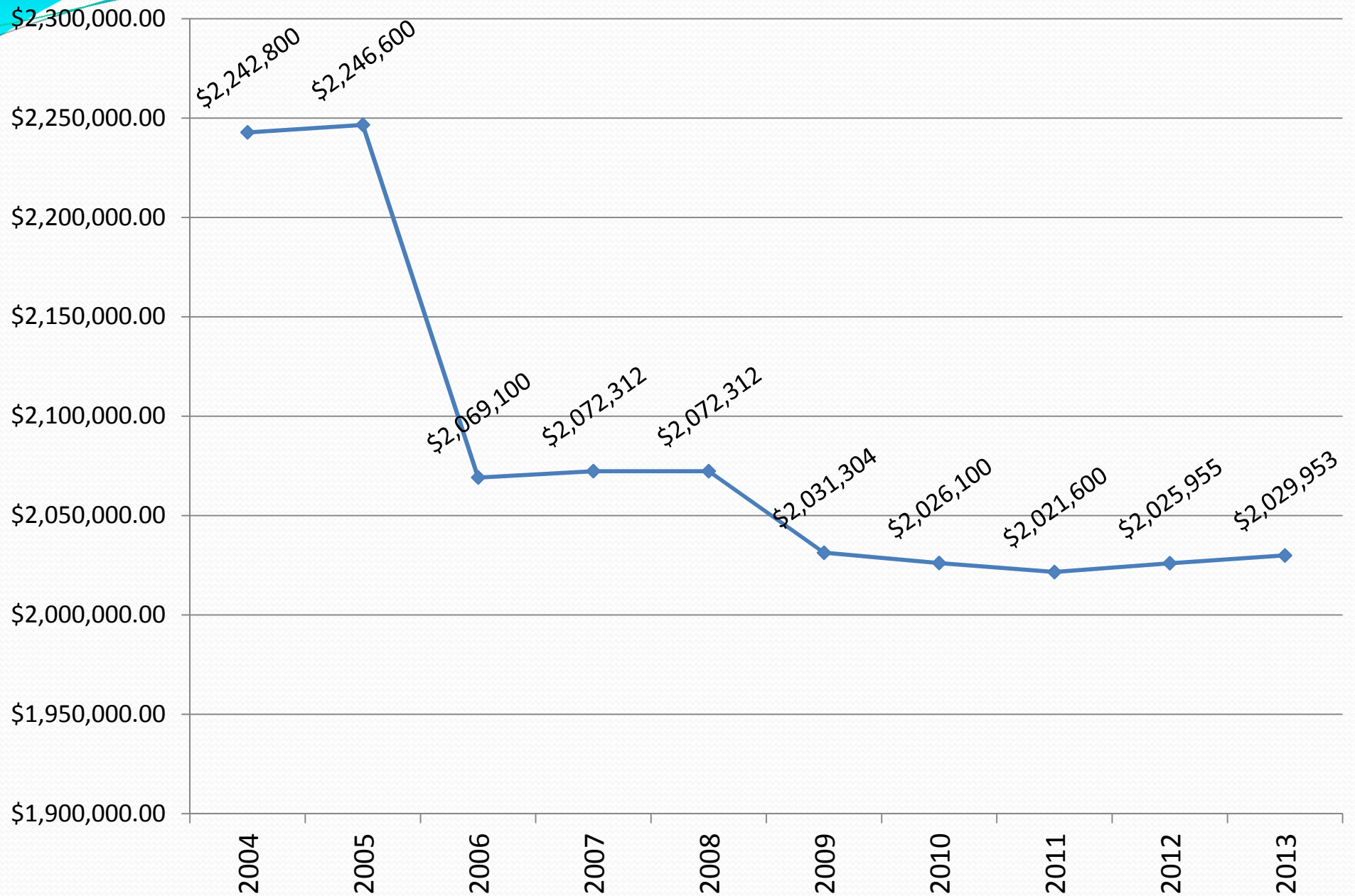




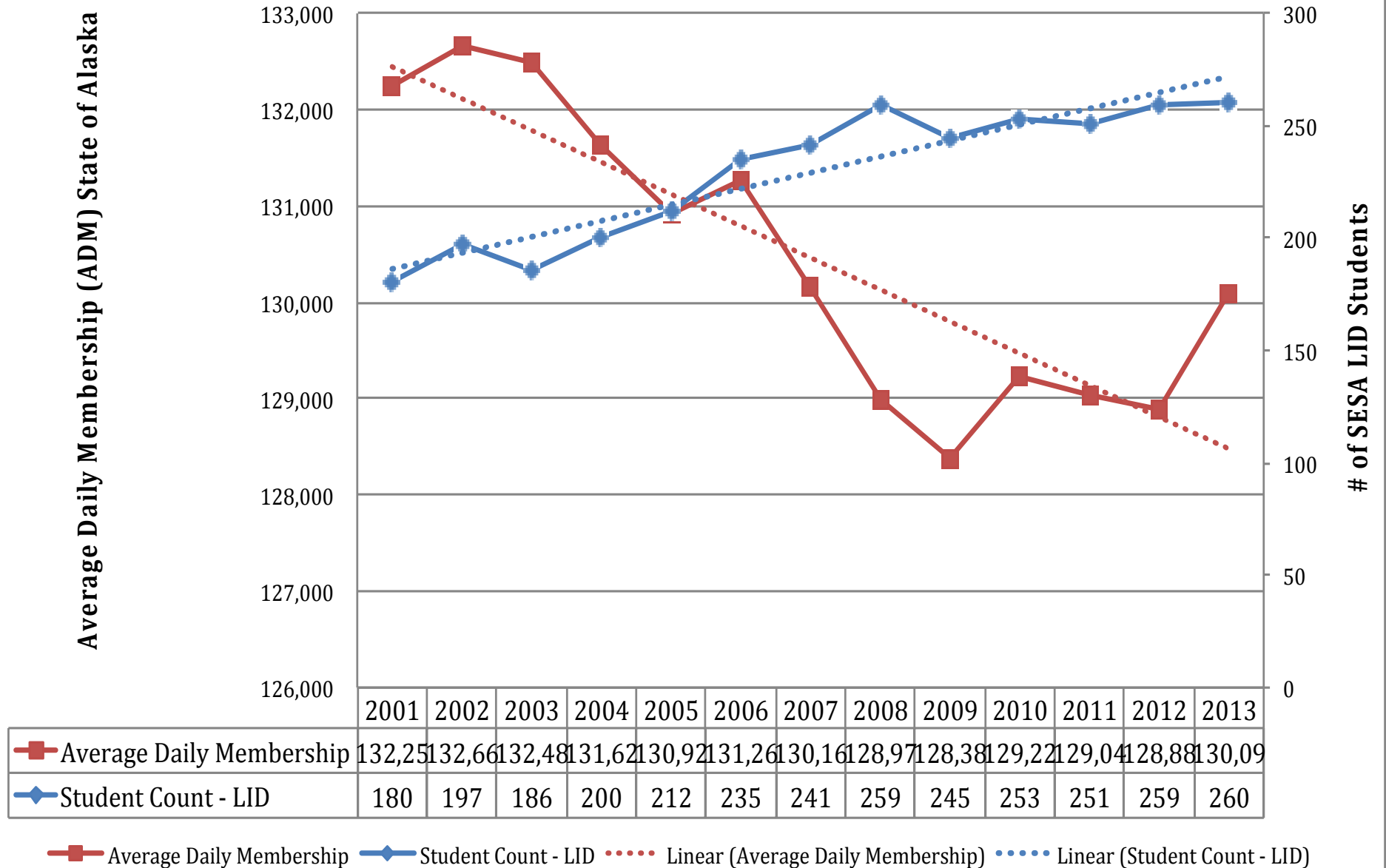
## **A.S. 14.30.630(b) (1) requires SESA to provide special education services including:**

- (A) **Itinerant outreach services** to students who are deaf, deaf-blind, mentally retarded, hearing impaired, blind and visually impaired, orthopedically disabled, health-impaired in other ways, and severely emotionally disturbed, and to students with multiple disabilities;
- (B) Special education instructional **support and training** of local school district special education personnel; and
- (C) **Other services** appropriate to special education needs.

## SESA's Funding FY 2004 - 2013



## ADM (i.e. SESA's Funding) vs SESA LID Student Count FY 2001-FY2013







# Legislative Audit Report

June 22, 2012

“Due to inflation, the real value of SESA’S LID budget, as established 14 years ago, has decreased 36 per cent. Accounting for inflation since 1998, SESA’s funding formula in today’s dollars would be approximately \$21.50 per student rather than the current funding formula amount of \$15.75...”



# 5 Year Review of Expenditures

	FY2013 Unaudited	FY2012	FY2011	FY2010	FY2009	TOTAL	% of TTL Exp
<b>Expenditures</b>							
Operations and support:							
Personnel	570,841	629,765	633,240	685,789	577,150	3,096,785	26%
Travel	52,719	54,395	37,910	19,928	5,454	170,406	1%
Contractual	370,843	333,308	218,094	-	-	922,245	8%
Commodities	10,423	16,762	20,471	248,466	254,414	550,536	5%
Equipment	-	3,757	107,592	47,563	25,022	183,934	2%
Other	11,265	14,587	9,740	42,357	20,566	98,515	1%
TOTAL operations and support	1,016,091	1,052,574	1,027,047	1,044,103	882,606	5,022,421	41%
Technical assistance:							
Personnel	1,452,596	1,263,032	1,007,636	859,448	1,000,220	5,582,932	46%
Travel	246,345	250,535	198,661	196,368	156,525	1,048,434	9%
Contractual	38,778	42,223	61,788	120,281	41,754	304,824	3%
Commodities (Supplies)	23,130	39,298	24,544	12,890	13,488	113,350	1%
Equipment	5,508	8,724	-	-	-	-	0%
Other	11,184	14,174	8,438	-	-	-	0%
TOTAL technical assistance	1,777,541	1,617,986	1,301,067	1,188,987	1,211,987	7,097,568	59%
<b>TOTAL expenditures</b>	<b>2,793,632</b>	<b>2,670,560</b>	<b>2,328,114</b>	<b>2,233,090</b>	<b>2,094,593</b>	<b>12,119,989</b>	<b>100%</b>



# Other Pertinent Info



	FY2013 Unaudited	FY2012	FY2011	FY2010	FY2009
Average Daily Membership (ADM) <i>(FY09-FY13 = 1.32% increase in ADM)</i>	130,098	128,886	129,047	129,229	128,381
Low Incidence Disabilities (LID) Student Count <i>(FY09-FY13 = 20.71% increase in LID Stud Ct)</i>	309	251	251	253	245
Anchorage CPI-U <i>(FY09-FY13 = 9.06% increase in CPI)</i>	210.85 (1st Half)	205.92	201.43	195.14	191.74
Base Specialist Salary <i>(FY09-FY13 = 8.49% increase in Base Sal)</i>	39,645	39,645	38,491	37,369	36,281
Average Specialist Salary <i>(FY09-FY13 = 8.49% increase in Avg Sal)</i>	56,882	56,882	55,225	53,617	52,055
Highest Specialist Salary <i>(FY09-FY13 = 8.49% increase in High Sal)</i>	78,886	78,886	76,588	74,358	72,192
Cert & Admin (Full Time Equivalency) FTE	11.69	11.6	11.1	10.94	11.84



# Cost Drivers

1. LID student count / caseload
2. Inflation
  - a) Keeping competitive salaries
  - b) Health insurance
  - c) Other personnel benefits
  - d) Travel/Supplies/Rent
3. Pace w/technology
4. Equipment
5. Required grant matching





# Legislative Audit Report

June 22, 2012

“...As a result, SESA is experiencing challenges with recruiting and retaining education specialists with specialized disability endorsements and meeting schools’ need for itinerant outreach services.”



## **Additional Funding Will Help SESA Provide More...**

- Evidence-based practices
- Classroom observation & program enhancement
- Child-specific educational intervention strategies modeled on-site
- Recruit & retain quality specialists







# **Special Education Service Agency**

**SERVING ALASKAN SCHOOLS FOR 27 YEARS!**

## **Thank You!**

## **– Questions?**