

The background of the slide is a scenic photograph of a large glacier flowing through a mountain valley. The glacier is a mix of white and blue ice, with visible crevasses. In the distance, there are more mountains under a clear sky. The foreground shows some green foliage.

Department of Labor and Workforce Development

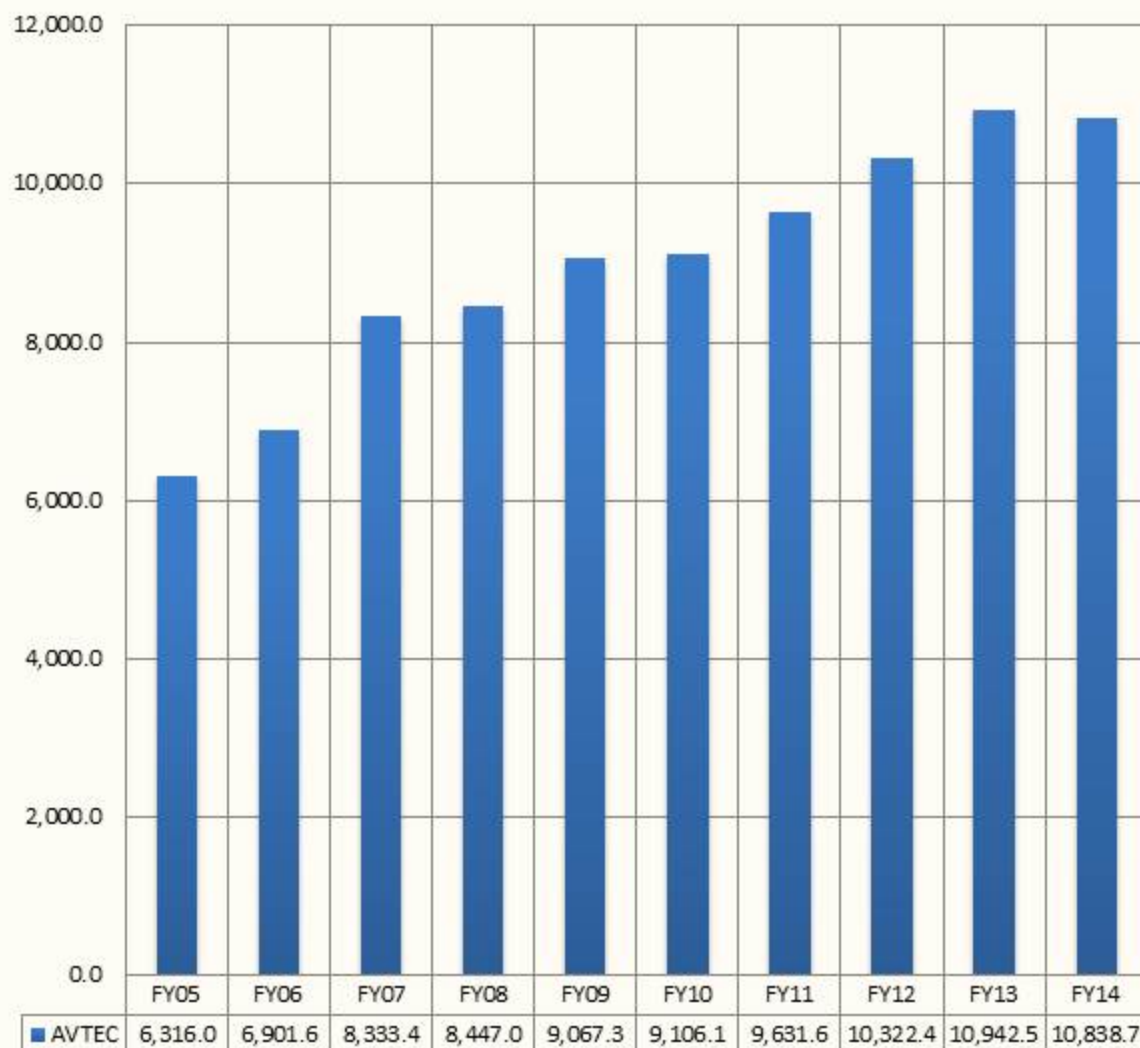
House Finance Subcommittee Hearing
Alaska Vocational Technical Center (AVTEC)
2/14/2013

AVTEC at a Glance

- Postsecondary vocational technical training institute whose mission is to train a diverse and effective workforce that supports the economic growth and stability of our state.
- 18 different long term training programs. 17 certificate level and one associates degree.
- Training is focused and immersive. A career in less than a year.
- Work-like environment. Zero tolerance and required attendance.

AVTEC's General Fund (GF) Growth

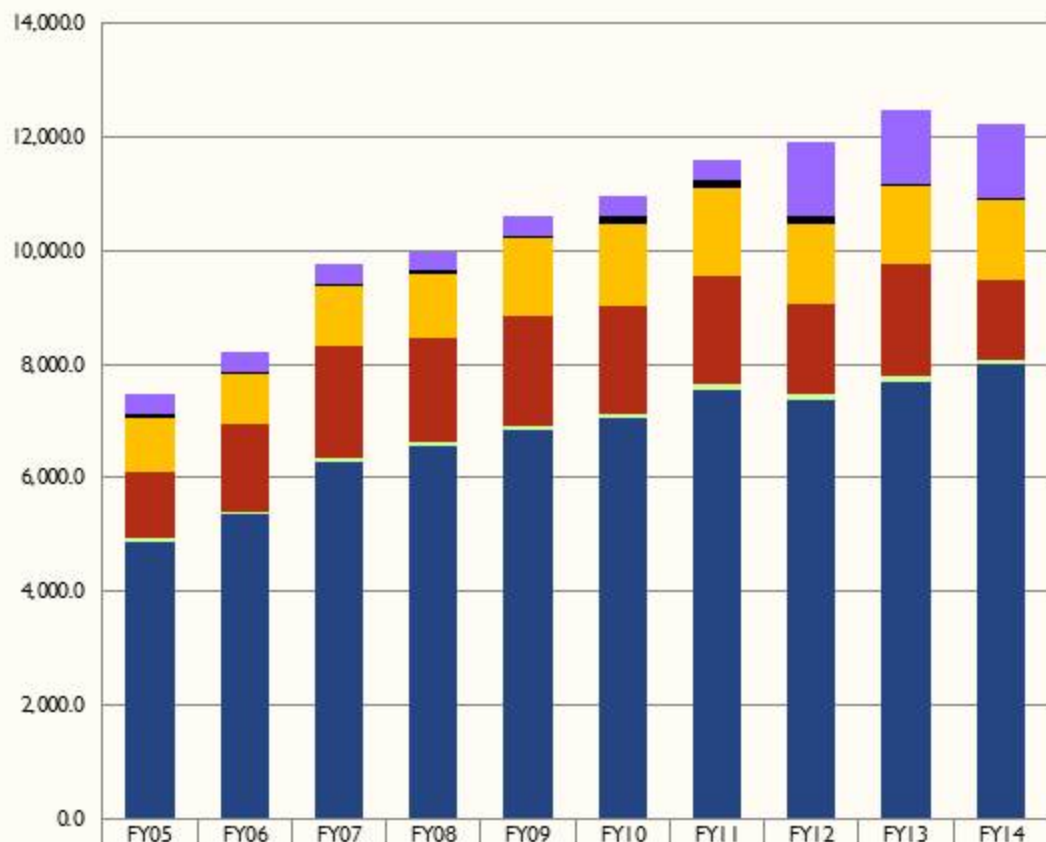
- AVTEC's GF budget grew by \$4.5 million between FY05 and the FY14 Governor's Request – an average annual growth rate of 6.2%.
- Growth since FY09 has been \$1.8 million (3.6% growth rate).



AVTEC's Line Item Distribution (All Funds)

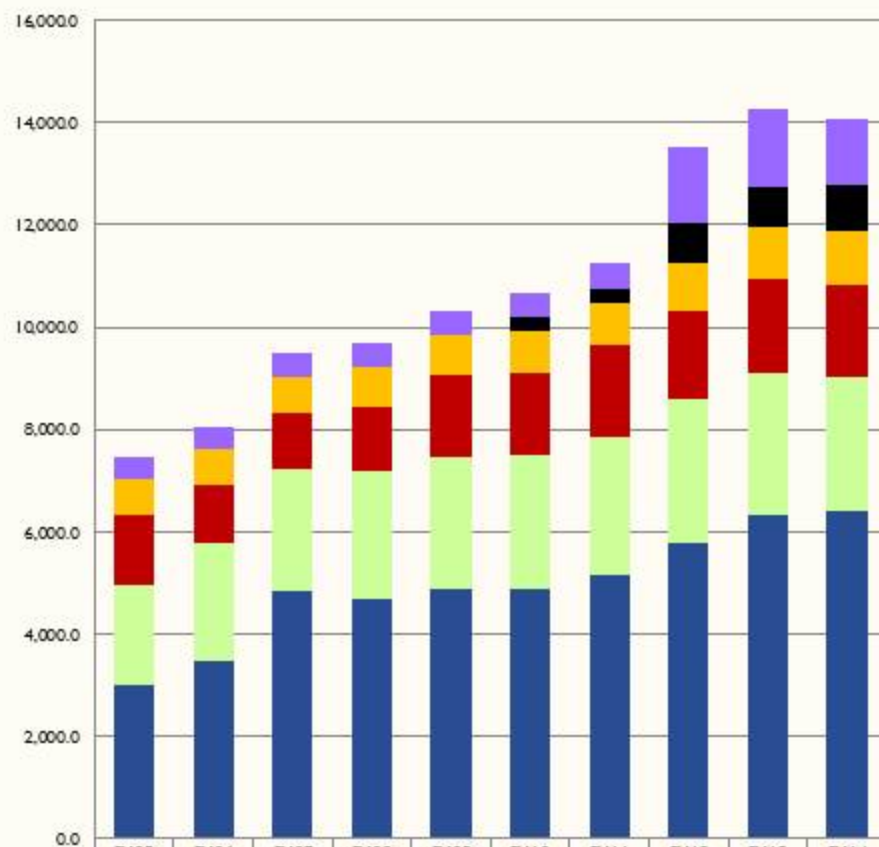
■ Personal Services has grown by \$3,124.3 (64%) since FY05.

- New Positions - \$1,329.8 (43%)
- Salary and Benefit Adjustments - \$1,794.5 (57%)



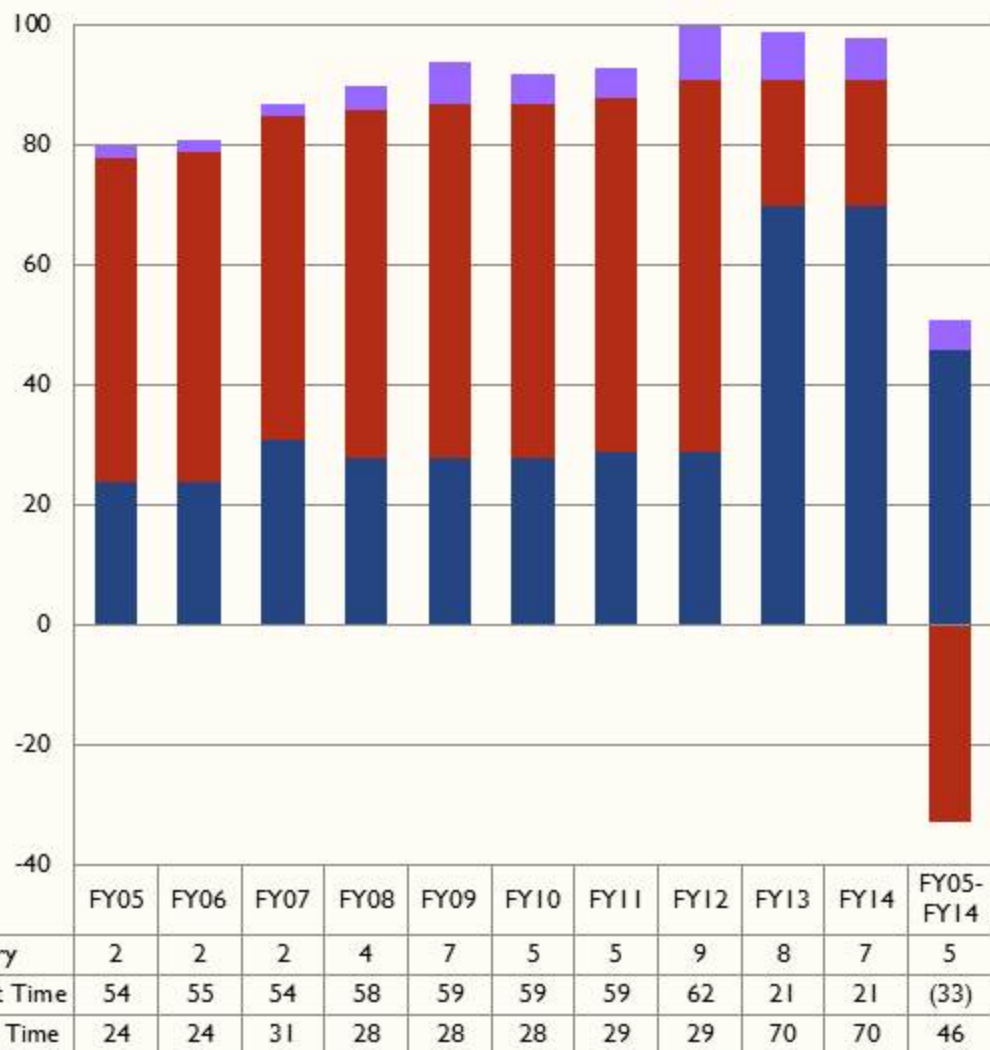
AVTEC Growth by Fund Source

- Pell Grants change to direct loan.
- Growth in SDPR and I/A.
- Importance and value of TVEP.



AVTEC's Budgeted Positions

- Since FY05, the total number of budgeted positions increased by 18.
- The switch of 41 part time positions to full time in FY13 was a technical adjustment to match the AVTECTA bargaining unit agreement.



AVTEC Growth

- Growth in AVTEC Operating since FY05:
 - Expanded programs – \$2,969.6
 - Salary and Benefit Increases – \$1,794.5
 - Federal Authorization for Pell Grants – \$806.8
 - Technical Vocational Education Program (TVEP) Increments – \$465.0
 - Funding for new support positions – \$438.6

AVTEC Expanded Programs

- Expanded Programs (\$2,969.6 & 5 Full Time Positions, 1 Part Time Position, 3 Temporary):
 - FY06 \$250.0 General Fund Program Receipts (GF/PR) to Align with Anticipated Receipts
 - FY06 Expand Allied Health – \$525.0 Unrestricted General Funds (UGF)
 - FY07 Expand Pipe Welding Program – \$280.0 UGF, \$31.0 GF/PR & 2 Full Time Positions
 - FY07 Expand the Maritime Program – \$518.0 UGF, \$58.0 GF/PR & 3 Full Time Positions

AVTEC Expanded Programs

Continued

- Expanded Programs (\$2,969.6 & 5 Full Time Positions, 1 Part Time Position, 3 Temporary):
 - FY12 Expand Maritime for Qualified Member of the Engine Department (QMED) and Dedicated Duty Engineer (DDE) – \$48.0 UGF, \$51.0 GF/PR & 1 Part Time Position
 - FY12 Village Internet Agent Training – \$100.0 Interagency & 1 Temporary Position
 - FY12 Expand Allied Health offerings in order to satisfy the Health Professions Opportunity grant from the Cook Inlet Tribal Council – \$781.8 Statutory Designated Program Receipts & 2 Temporary Positions
 - FY13 Registered Nurse Program – \$226.8 UGF, 100.0 GF/PR

AVTEC Long Term Enrollment and Capacity

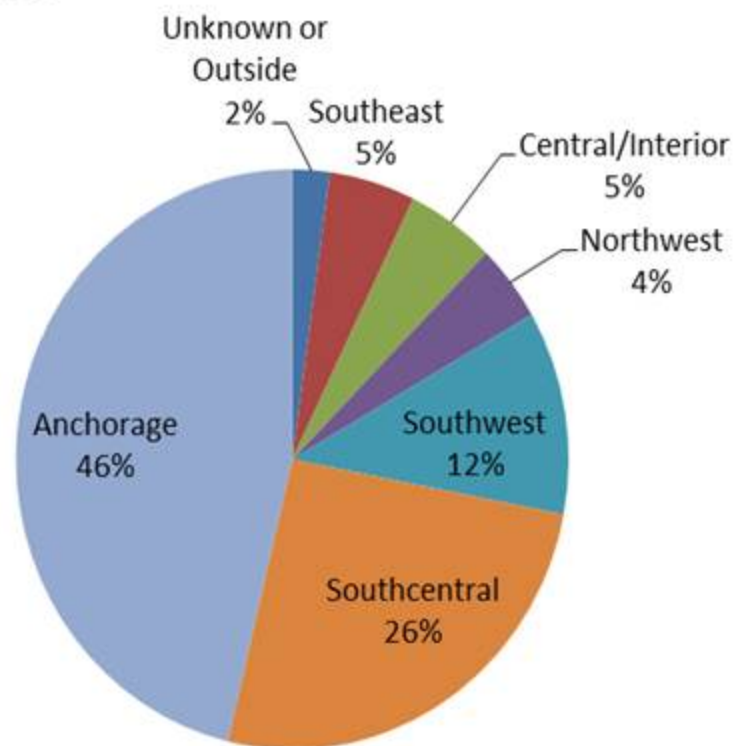
Long Term Program	Class Capacity		FY12 Total Capacity	Enrollment								FY12 Enrollment as % of Capacity
	Capacity	Offerings		FY05	FY06	FY07	FY08	FY09	FY10	FY11	FY12	
Automotive Technology	-	-	0	16	15	11	11	13	14	10	-	N/A
Business and Office Technology	30	1	30	24	25	23	14	16	31	32	29	96.67%
Diesel/Heavy Equipment Tech	12	3	36	25	25	30	24	33	25	20	30	83.33%
Facility Maintenance Construction	15	1	15	12	11	12	7	14	11	10	10	66.67%
Facility Maintenance Mechanical	-	-	-	14	12	11	6	-	-	-	-	0.00%
Plumbing and Heating	15	1	15	-	-	-	-	-	13	15	11	73.33%
Industrial Electricity	36	1	36	-	26	25	25	27	26	29	26	72.22%
Information Technology	16	1	16	14	18	14	16	13	13	18	16	100.00%
Power Plant	12	2	24	18	23	25	20	23	20	19	12	50.00%
Professional Cooking/Baking	17	2	34	23	17	28	28	29	19	28	29	85.29%
Combination Welding	14	2	28	-	-	-	-	-	-	-	26	92.86%
• Structural Welding	-	-	-	24	25	19	29	33	23	30	-	#DIV/0!
• Pipe Welding	-	-	-	4	2	5	12	12	14	14	-	0.00%
Village Internet Agent	16	2	32	-	-	-	-	-	-	-	11	34.38%
Web Development Technology	-	-	-	-	6	8	7	11	8	-	-	0.00%
Master/Mate Not More than 200 Tons	15	1	15	12	3	16	17	7	10	7	8	53.33%
Qualified Member of the Engine Department (QMED)	15	2	30	-	-	-	-	-	-	7	8	26.67%
Certified Nurse Assistant (CNA)	10	10	100	111	91	102	103	117	110	93	95	95.00%
Licensed Practical Nurse	10	2	20	17	29	18	20	20	20	20	20	100.00%
Medical Coding & Billing	10	3	30	-	-	-	-	-	-	-	34	113.33%
TOTAL	243	34	461	314	328	347	339	368	357	352	365	79.18%

AVTEC FY05 – FY12 Completion & Placement Report

AVTEC	Automotive Technology	Business & Office Technology	Certified Nurses Assistant (Anchorage)	Medical Coding and Billing Anchorage C/TC Sponsored	Combination Welding	Culinary Arts	Diesel/Heavy Equipment	Facility Maintenance/Construction	Facility Maintenance/Mechanical & Plumbing & Heating	Industrial Electricity	Information Technology	Practical Nurse	Master/Mate	Pipe Welding	Power Plant Operator	Qualified Member Engine Department (Oiler)	Web Development Technology	Village Internet Agent	Structural Welding	Institution Totals
2005 Completion Rate	87%	71%	88			70%	77%	58%	79%	84%	71%	100%	92%	100%	83%				79%	83%
2005 Placement Rate	90%	94%	90%			100%	100%	86%	100%	94%	80%	86%	91%	100%	100%				94%	93%
2006 Completion Rate	77%	76%	87%			79%	81%	100%	92%	88%	78%	100%	67%	100%	74%		67%		88%	85%
2006 Placement Rate	90%	100%	90%			100%	95%	90%	80%	95%	85%	88%	100%	100%	94%		100%		95%	92%
2007 Completion Rate	88%	83%	71%			73%	78%	83%	91%	96%	83%	93%	88%	100%	95%		100%		84%	83%
2007 Placement Rate	87%	100%	87%			95%	100%	80%	100%	79%	90%	100%	100%	100%	89%		75%		81%	90%
2008 Completion Rate	63%	79%	79%			75%	81%	86%	67%	75%	93%	92%	88%	100%	90%		100%		100%	84%
2008 Placement Rate	100%	100%	87%			89%	100%	80%	100%	94%	86%	95%	86%	100%	100%		60%		85%	90%
2009 Completion Rate	82%	88%	90%		100%	67%	80%	79%		96%	85%	92%	100%	100%	70%		100%		76%	85%
2009 Placement Rate	75%	93%	87%		100%	95%	96%	91%		83%	64%	82%	67%	100%	100%		82%		33%	85%
2010 Completion Rate	75%	89%	87%		100%	84%	81%	55%	100%	88%	77%	95%	70%	100%	70%				86%	84%
2010 Placement Rate	82%	92%	93%		100%	88%	92%	86%	92%	83%	90%	100%	71%	100%	100%				73%	91%
2011 Completion Rate	92%	88%	90%		100%	71%	95%	80%	100%	93%	88%	95%	100%	100%	79%	100%	75%		87%	89%
2011 Placement Rate	73%	89%	83%		100%	80%	95%	100%	100%	85%	86%	89%	100%	100%	100%	71%	50%		75%	87%
2012 Completion Rate	—	70%	91%	50%	100%	69%	74%	90%	100%	88%	81%	93%	88%	—	100%	100%	—	91%	—	85%

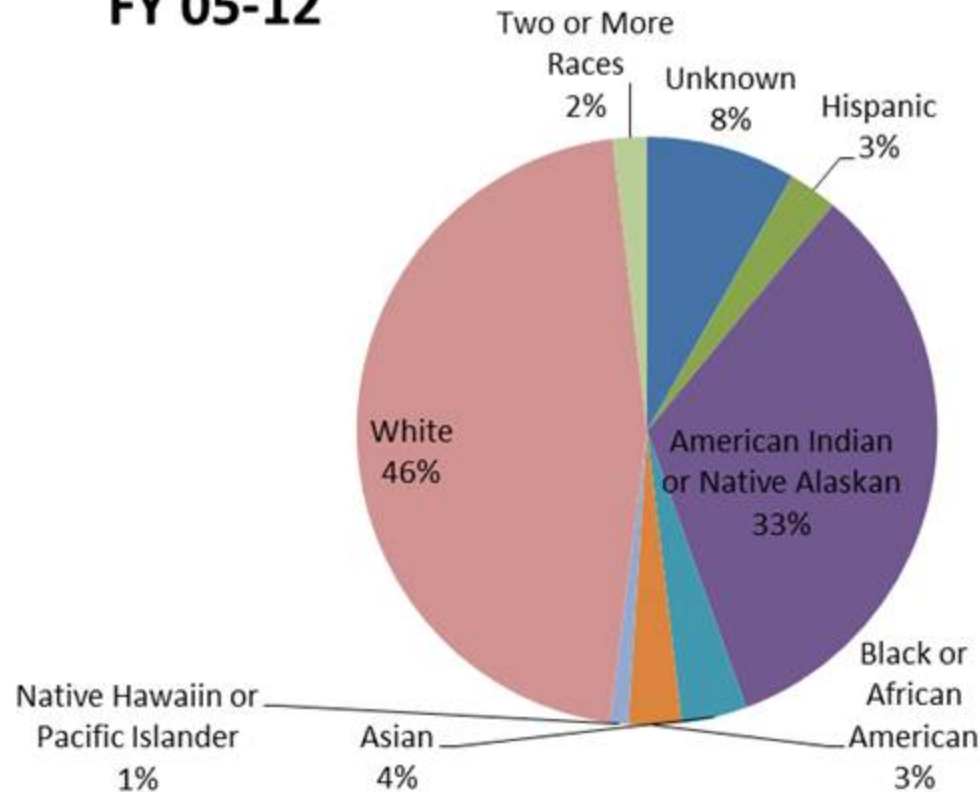
AVTEC Student Demographics

Long-term Student Regions FY 05-12



AVTEC Student Demographics

Long-term Student Ethnicity FY 05-12



AVTEC Funding for New Support Positions

- Funding for New Support Positions (\$438.6):
 - FY08 Custodian Position due to New Facilities – \$50.0 UGF
 - FY11 Grants Administrator – \$41.8 GF/PR, \$41.8 Fed
 - FY12 \$250.0 UGF to replace Deferred Maintenance Funding
 - FY12 Custodian Position due to New Facilities – \$55.0 GF/PR

7 Ways Industry Partners Invest

- Hire AVTEC Graduates: Spring Job Fair
- Serve on Advisory Board: Twice Yearly
- Student Scholarships: Some or All Costs
- Equipment Donations: Keep up in Technology
- Contract Training: Technical Training Employees
- Tax Credit Donations: Win/Win
- In-Kind Services: Marketing, Instructor Development

Training Partnerships

- University of Alaska: Most programs qualify for up to one year of UA credit towards an Associates Degree through an approved articulation agreement. Information Technology graduates may earn up to 34 credits.
- Regional Training Centers: Program Development Assistance
- High Schools: Career Fairs, Distance Delivered Courses, Articulation

The AVTEC Difference



Emmett Anderson came to us from Chignik.

AVTEC awarded Emmett a training scholarship sponsored by Crowley Maritime and Alyeska Pipeline. He trained with AVTEC and in 19 weeks passed all the USCG examinations on site and was awarded an Able Bodied Seaman's credential with endorsements as a Lifeboatman, Tankerman Assist, 1st Aid and CPR along with other course content that allowed Crowley to hire him as an AB on their ship assist and response tugs in Valdez.

For More Information Please Contact

Commissioner Dianne Blumer
PO Box 111149
Juneau, AK 99811-1149
Phone: 907-465-2700