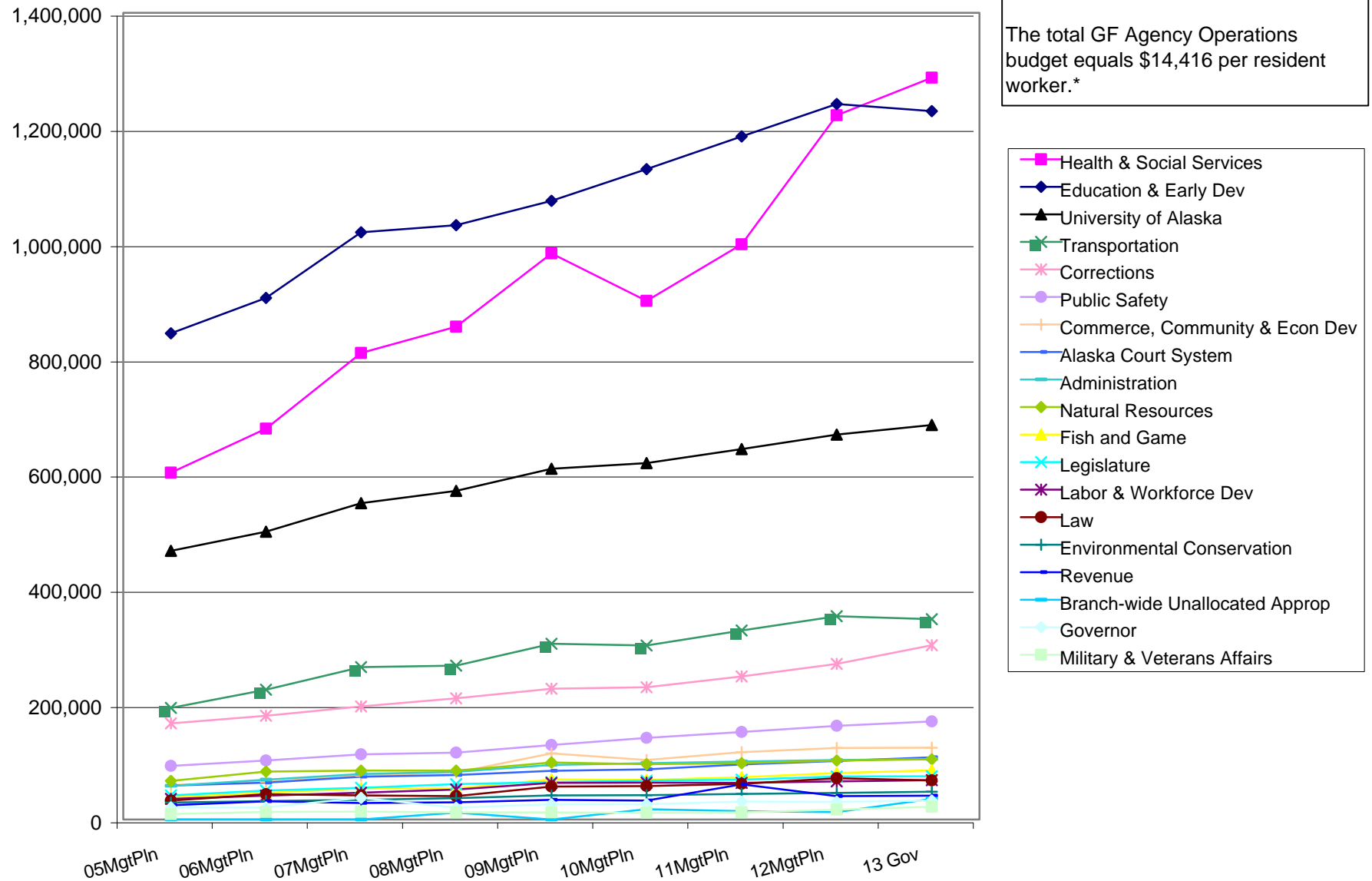


Agency Operations (GF Only) (Thousands)

The GF budget grew by \$2.1 billion (73.8%) between FY05 & the FY13 Governor's request--an average annual growth rate of 7.2%.

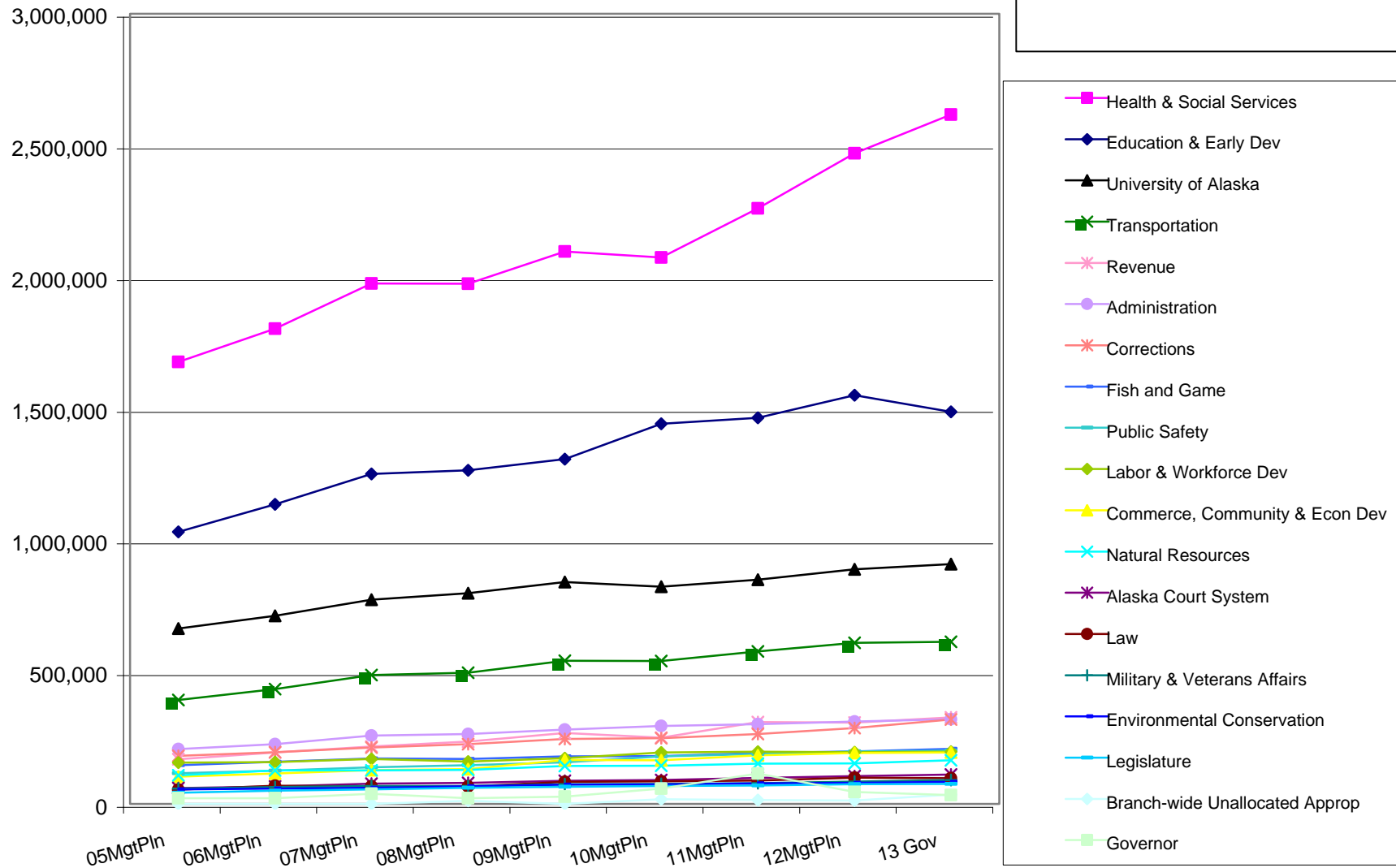
The total GF Agency Operations budget equals \$14,416 per resident worker.*



* According to the Department of Labor, there were 342,652 resident workers in Alaska in 2009.

Agency Operations (All Funds) (Thousands)

The budget grew by \$2.8 billion (54.2%) between FY05 & the FY13 Governor's request--an average annual growth rate of 5.6%.



Departments' Share of Total Agency Operations (GF Only)

