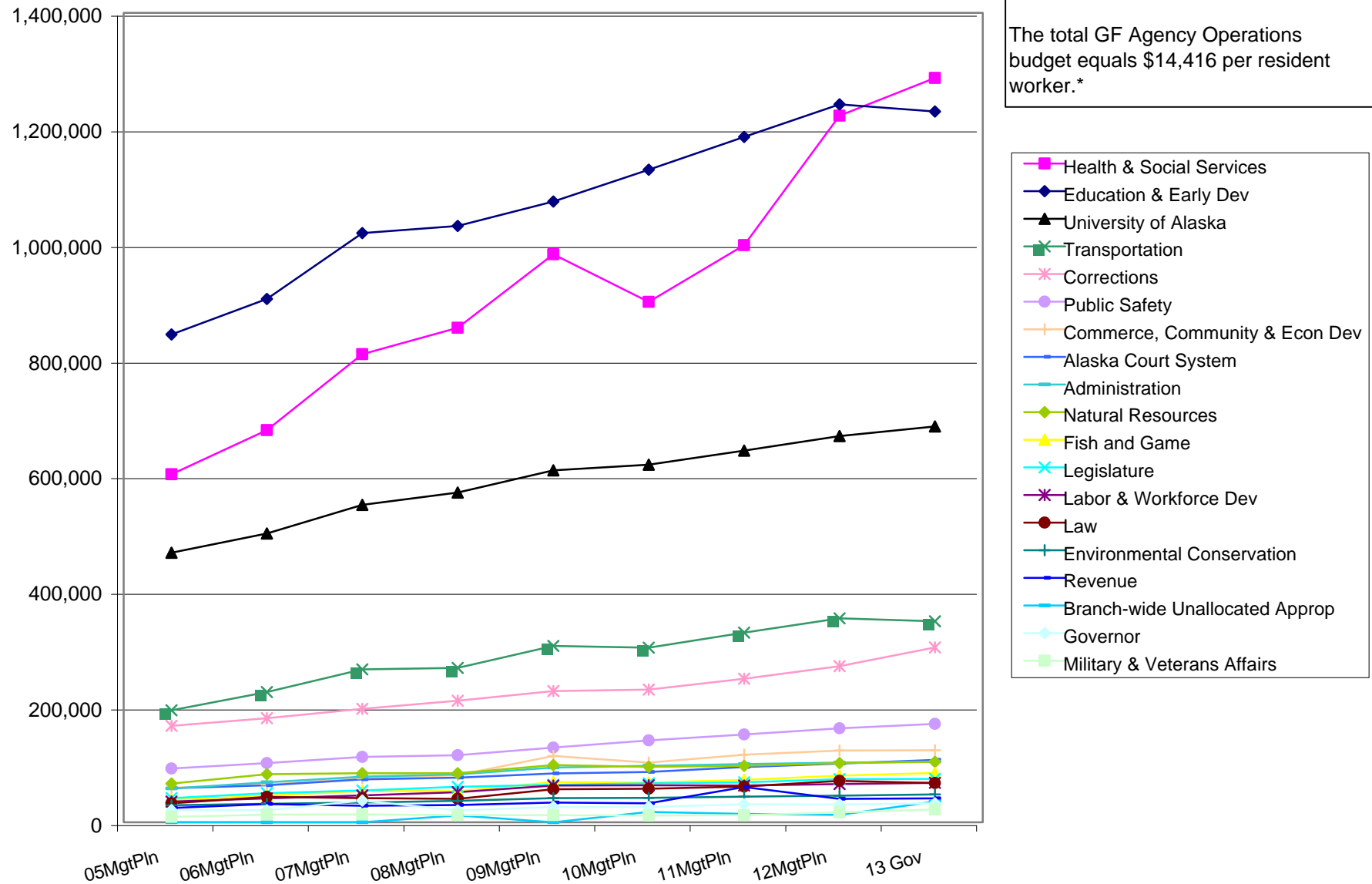


# **Agency Operations (GF Only) (Thousands)**

The GF budget grew by \$2.1 billion (73.8%) between FY05 & the FY13 Governor's request--an average annual growth rate of 7.2%.

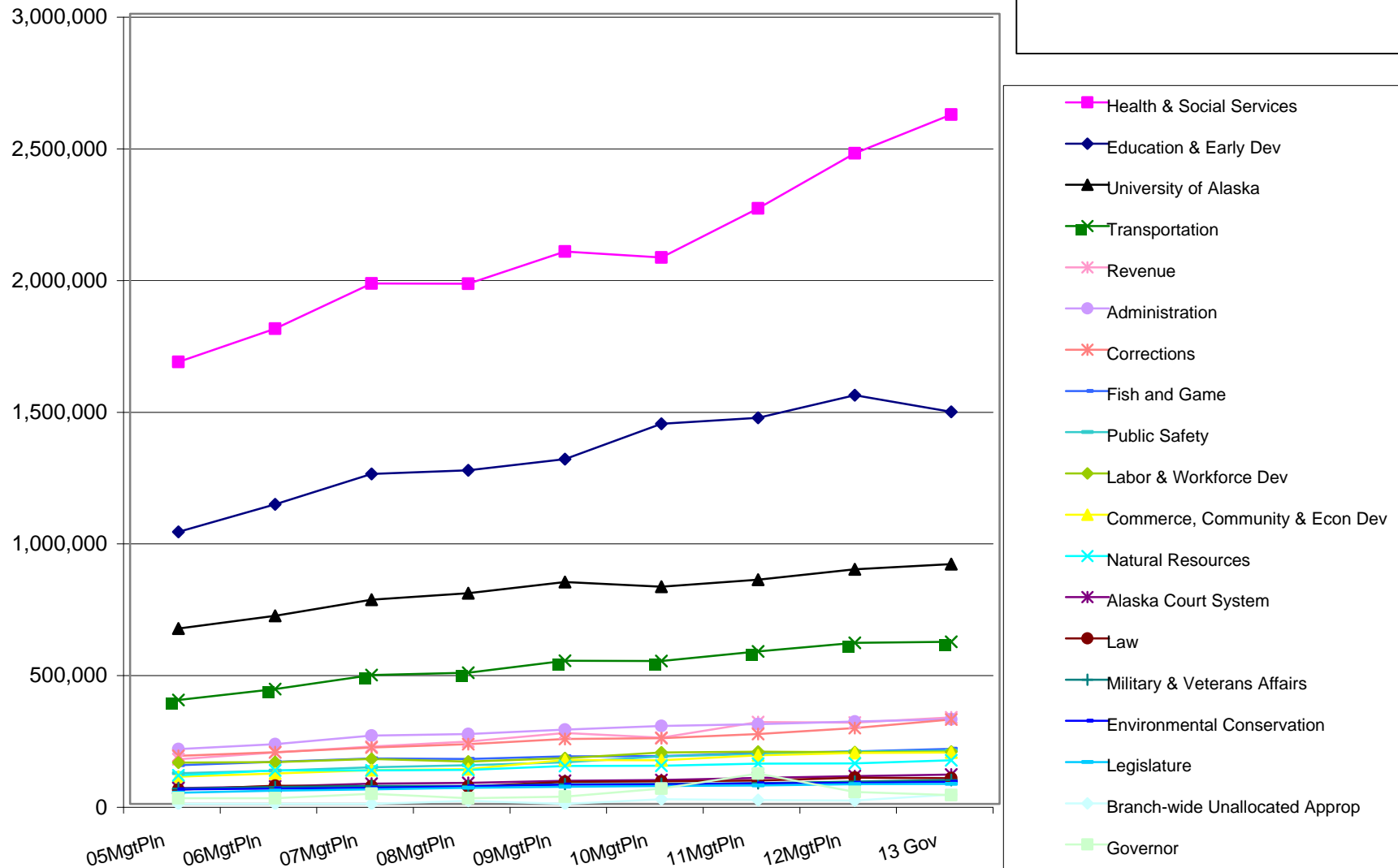
The total GF Agency Operations budget equals \$14,416 per resident worker.\*



\* According to the Department of Labor, there were 342,652 resident workers in Alaska in 2009.

# **Agency Operations** (All Funds) (Thousands)

The budget grew by \$2.8 billion (54.2%) between FY05 & the FY13 Governor's request--an average annual growth rate of 5.6%.



## Departments' Share of Total Agency Operations (GF Only)

