



Alaska Department of Transportation & Public Facilities

Overview

**Presented to the House Finance Committee
February 2, 2011**

Marc Luiken, Commissioner



Mission

to provide for the safe **and efficient** movement of people and goods and the delivery of State services



Vision

- Trusted performance-driven organization
- Collaborating with internal and external partners
- Delivering an efficient multi-modal transportation system and public facilities
- Enhancing the quality of life for Alaskans
- Promoting economic resource development

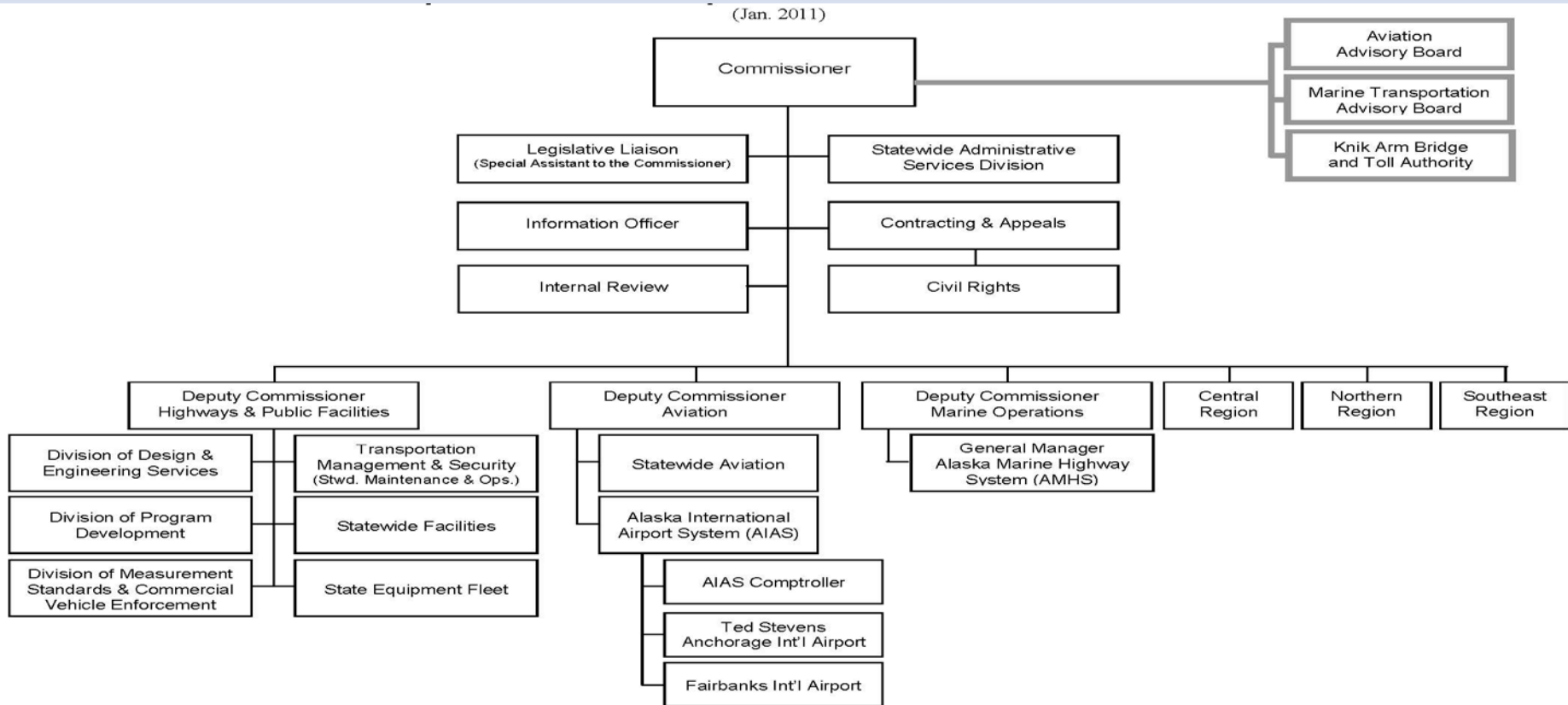


Values

- Integrity
- Transparency
- Outstanding service provided by
 - Continually developing our skills, tools, expertise
 - Developing internal/external relationships
 - Pioneering spirit: innovative ways of doing business
 - Adapting rapidly to opportunities and challenges
 - Quality work force



Organization

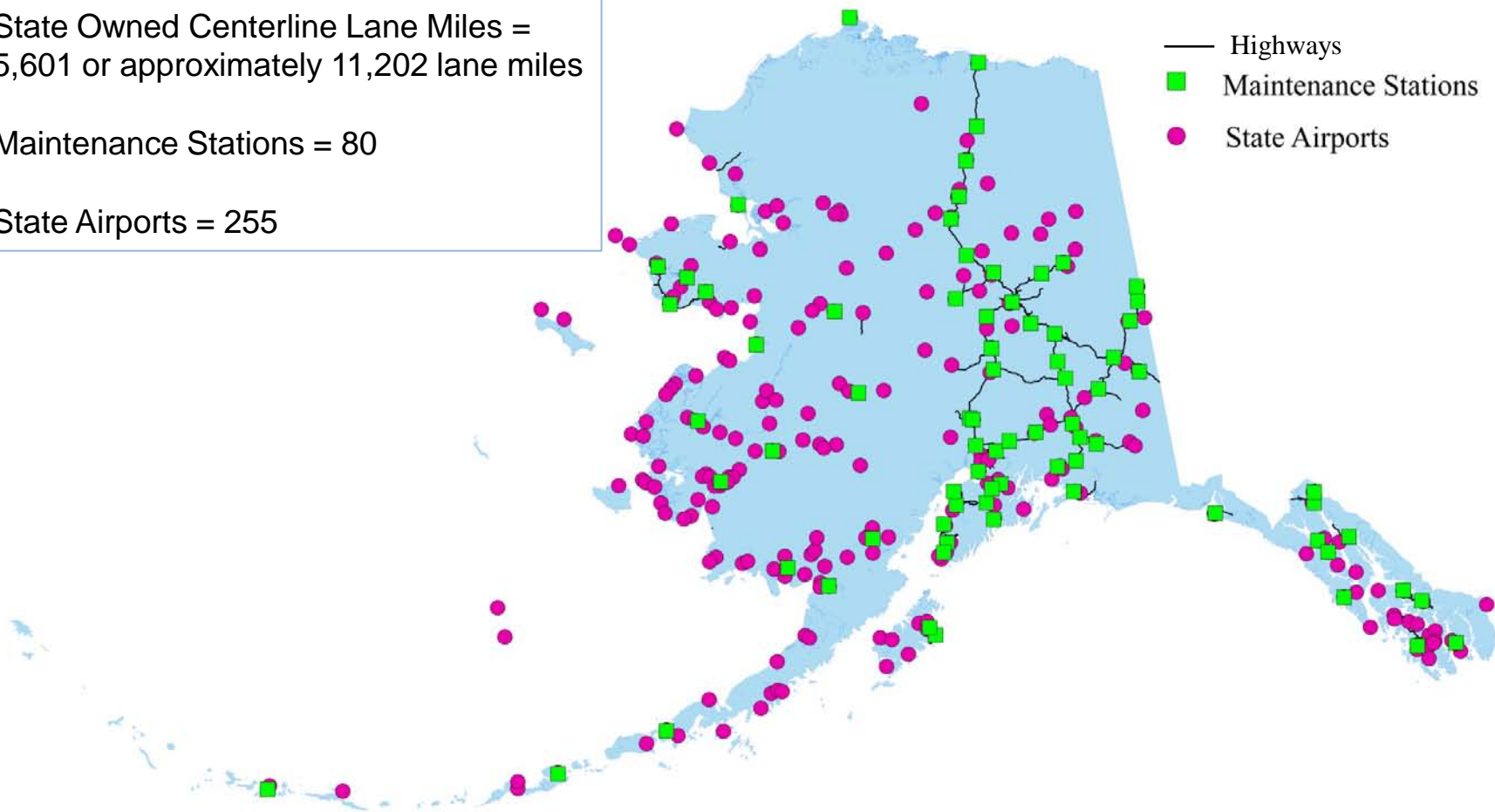




State Owned Centerline Lane Miles =
5,601 or approximately 11,202 lane miles

Maintenance Stations = 80

State Airports = 255





Governor's Priorities

- Jobs
- Safety
- Roads to resources
 - Foothills West – road to Umiat
 - Ambler mining district access
 - Western Access
- Deferred maintenance





Project Prioritization

- Safety
- Asset Management System
 - Pavement, bridges, airports, ferries, transit, maintenance
- 2030 Long Range Transportation Plan
 - Regional Transportation Plans



Project Prioritization Cont'd

- Aviation Improvement Program (AIP)
- State Transportation Improvement Program (STIP)



Successes



Highways & Aviation



Mertarvik Project



Tanana Bridge



Fairbanks International Airport



Marine Highways

- Hoonah Ferry Terminal dock facilities.



- Gustavus
- Aleutian Chain



Challenges

- Needs exceed resources
- Federal funding/process
- Recruitment/retention
- AMHS
- Natural Disasters





Current Information on Alaska's Roadways

- Weather Cameras
- Weather Watches
- Road Construction
- Future Construction
- Incidents
- Driving Conditions
- Available by Phone or on the web

Project Information Reporting Improvements on web



RWIS Camera

Parks Highway @ Little Coal Creek MP 163.2

Fair Driving Conditions

Elliott Highway from Steese Highway to Milepost 27

Warnings: Reduce your speed - Drive with headlights on - Be prepared for winter driving .

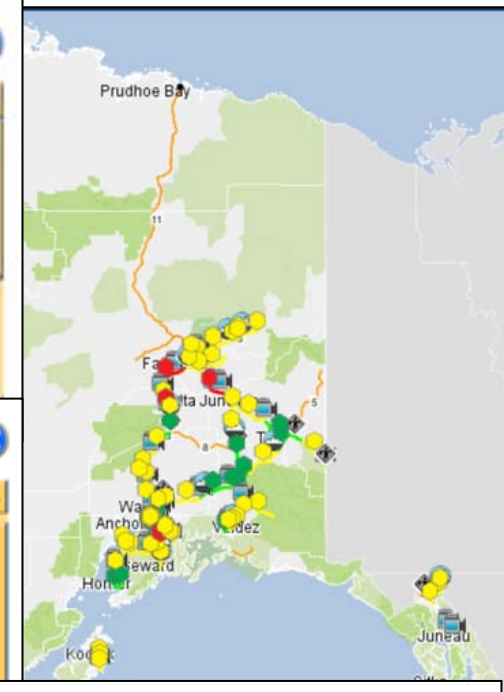
Atmospherics: - Cloudy - Fog .

Pavements: Icy patches - Rough icy patches Road surface in poor condition .

Snow:

Wind Speed:

Last updated: Jan 5, 2011



Road construction

Alaska Highway from Milepost 1222 to Milepost 1235

roadwork

Closures: Future lane closure - Short delays (5 - 15 min) .

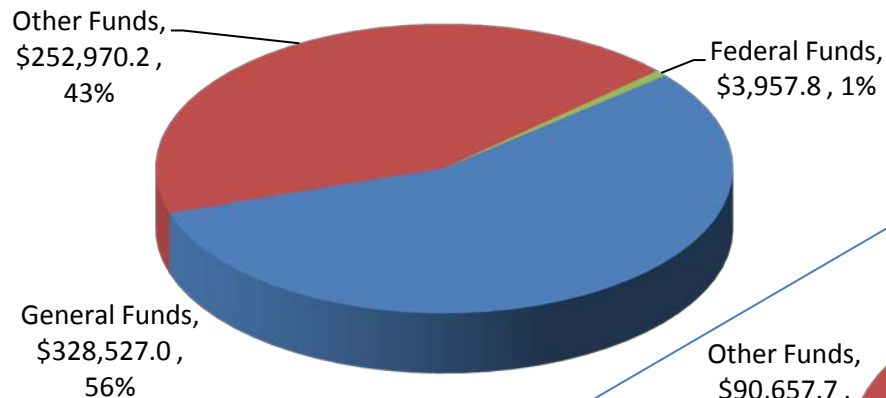
Warnings: Be prepared to stop - Heavy equipment on roadway - Heavy equipment on shoulder - Use caution when traveling through this area - Use extreme caution - Warning - Workers on roadway -

Last updated: Dec 27, 2010 12:07 PM

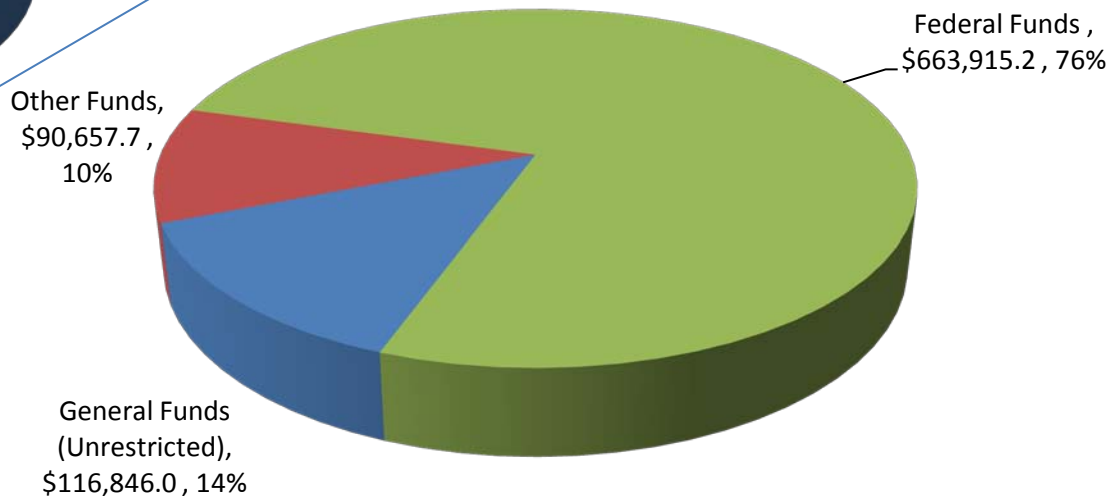


Funding

FY2012 DOT&PF Operating Budget
\$585,455.0 Total Funds



FY2012 DOT&PF Capital Budget
\$871,418.9 Total Funds





Questions?