



Northern Rail Extension

Phase 1: Tanana Crossing at Salcha

Purpose:

- Provide year-round surface transportation to vast military training ranges on the south side of the Tanana River
- First critical step in the overall 80-mile Northern Line Extension project between North Pole and Delta Junction, providing freight and passenger transportation alternatives to the Richardson Highway

Statistics:

- 3300-foot bridge (20-165 foot steel spans) will be the longest bridge in the state of Alaska
- 2-mile levee will significantly attenuate frequent flooding in the community of Salcha
- Largest transportation infrastructure project in the Alaska interior in nearly 30 years

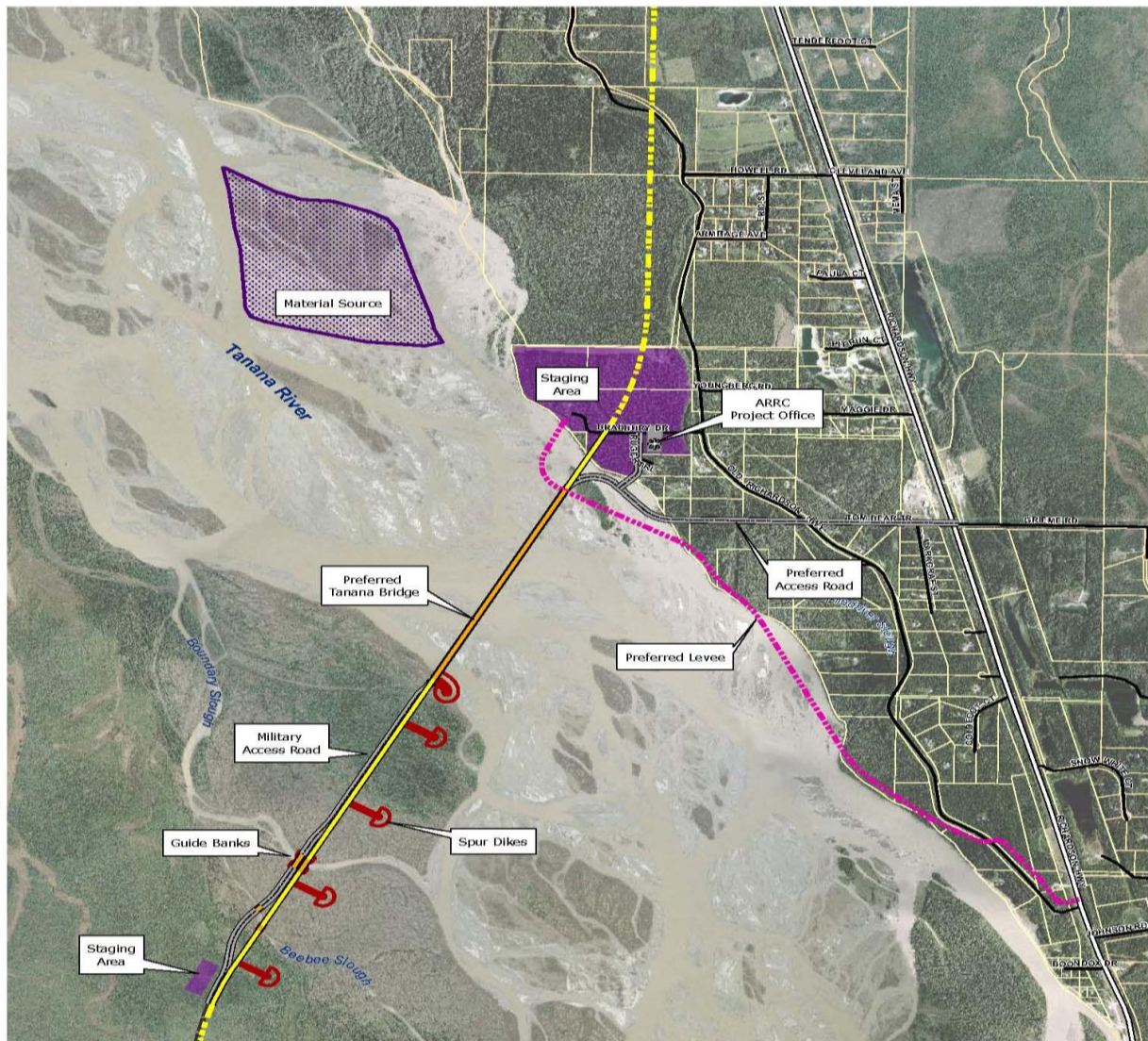
Funding:

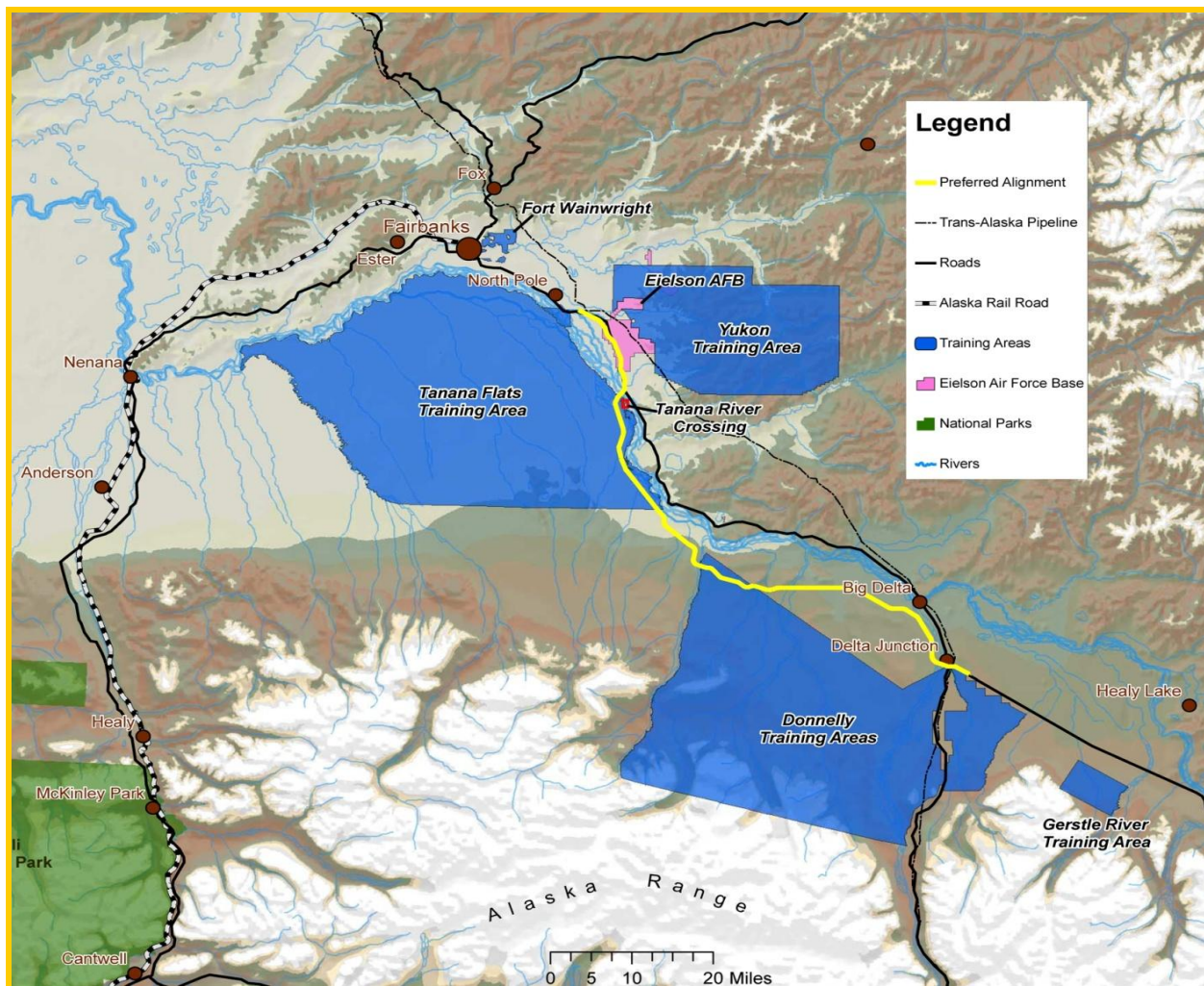
2008 Military/FRA Grant (exp. 2013)	\$ 44 million
2009 Military/FRA Grant (exp. 2014)	\$ 60 million
2011 State of Alaska Grant	\$ 40 million
Total Available Funding	\$ 144 million
Re-sequenced Cost Estimate	\$ 188 million
<i>Budget Gap/Legislative Request</i>	<i>\$ 44 million</i>

- **Construction MUST start this summer or federal funding will be in jeopardy**

Next steps before ARRC can proceed:

- Additional \$44.0 million funding secured
- Obtain the Permits
- Federal Funding Agencies Approval:
 - Military: approve final plans
 - Federal Railroad Administration (FRA)







Public Scoping Meetings - Please Attend

At present, the JPARC consists of all land, air, and sea training areas used by the Army, Navy, and Air Force in Alaska. The military currently uses the JPARC to conduct testing, training, and to support joint exercises and mission rehearsals. The Army and Air Force, through Alaskan Command, are proposing to modernize and enhance the JPARC to enable realistic joint training for the Army, Navy, Marine Corps, and Air Force.

Pursuant to the National Environmental Policy Act (NEPA), the Army and Air Force are preparing the *Environmental Impact Statement (EIS) for the Modernization and Enhancement of Ranges, Airspace, and Training Areas in the Joint Pacific Alaska Range Complex in Alaska (JPARC Modernization and Enhancement EIS)*. The EIS will analyze potential environmental consequences associated with the JPARC enhancements. Descriptions of the EIS proposed actions and alternatives to be discussed at the scoping meetings are shown below.

Please direct any written comments or requests for information to:

ALCOM Public Affairs
9480 Pease Avenue, Suite 120
JBER, AK 99506

Phone: 907-552-2341, fax: 907-552-5411, or www.jparcheis.com

You may also request handicap assistance or translation services for the public scoping meetings in advance through ALCOM Public Affairs Office.

You are invited to attend a scoping meeting to:

- ☒ Learn about the proposal and the EIS process
- ☒ Identify community-specific issues
- ☒ Make sure you are included on our mailing list

Scoping Meetings

Meetings are from 6:30 p.m. - 8:30 p.m. with a presentation beginning at 7:00 p.m. except where noted*

Thursday, January 13

The Millennium Alaskan Hotel
Turnagain Room
4800 Spenard Road
Anchorage, Alaska 99517-3236

Tuesday, January 18

Caribou Hotel
Mile 186.5 Glenn Highway
Glennallen, Alaska 99588

Wednesday, January 19

Alaska Steakhouse and Motel
Mile 285 Richardson Highway
Delta Junction, Alaska 99731

Thursday, January 20

*12:00 - 2:00 p.m. & 4:00 - 8:00 p.m.
With presentations at 12:30 and 4:30 p.m.
Princess Fairbanks Hotel
4477 Pike's Landing
Fairbanks, Alaska 99709

Monday, January 24

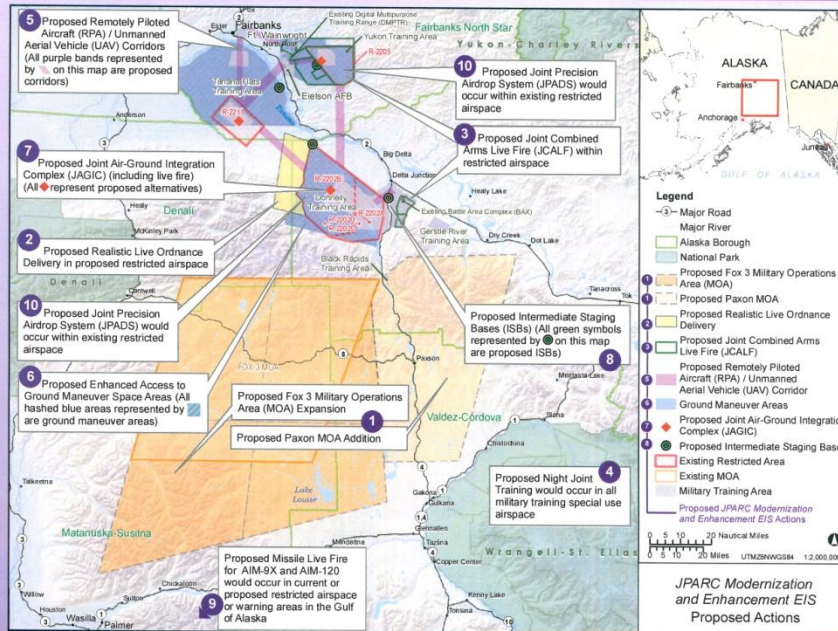
Motel Nord Haven
249 George Parks Highway
Healy, Alaska 99743

Tuesday, January 25

Swiss Alaska Inn
22056 South F Street
Talkeetna, Alaska 99676

Wednesday, January 26

Menard Memorial Sports Center
1001 S. Mack Drive
Wasilla, Alaska 99654



The JPARC modernizations and enhancements would provide adequate resources to enable the Services to train realistically and jointly for military personnel to succeed in their mutually supportive combat roles when exposed to situations faced in actual combat.