

SCOPING MAP Public Safety & Landslide Hazards Ratz Harbor Area

Land Manager

- USFS
- USFS - Natural Land Cover
- State of Alaska
- Mental Health Lands Trust
- University of Alaska
- ANCSCA Corporation
- Private/Local Government

- USFS Documented Landslides (polygon)
- USFS Documented Landslides (point)

Analysis Road

- Other Forest Roads
- 50% - 67% Slope
- 67%+ Slope

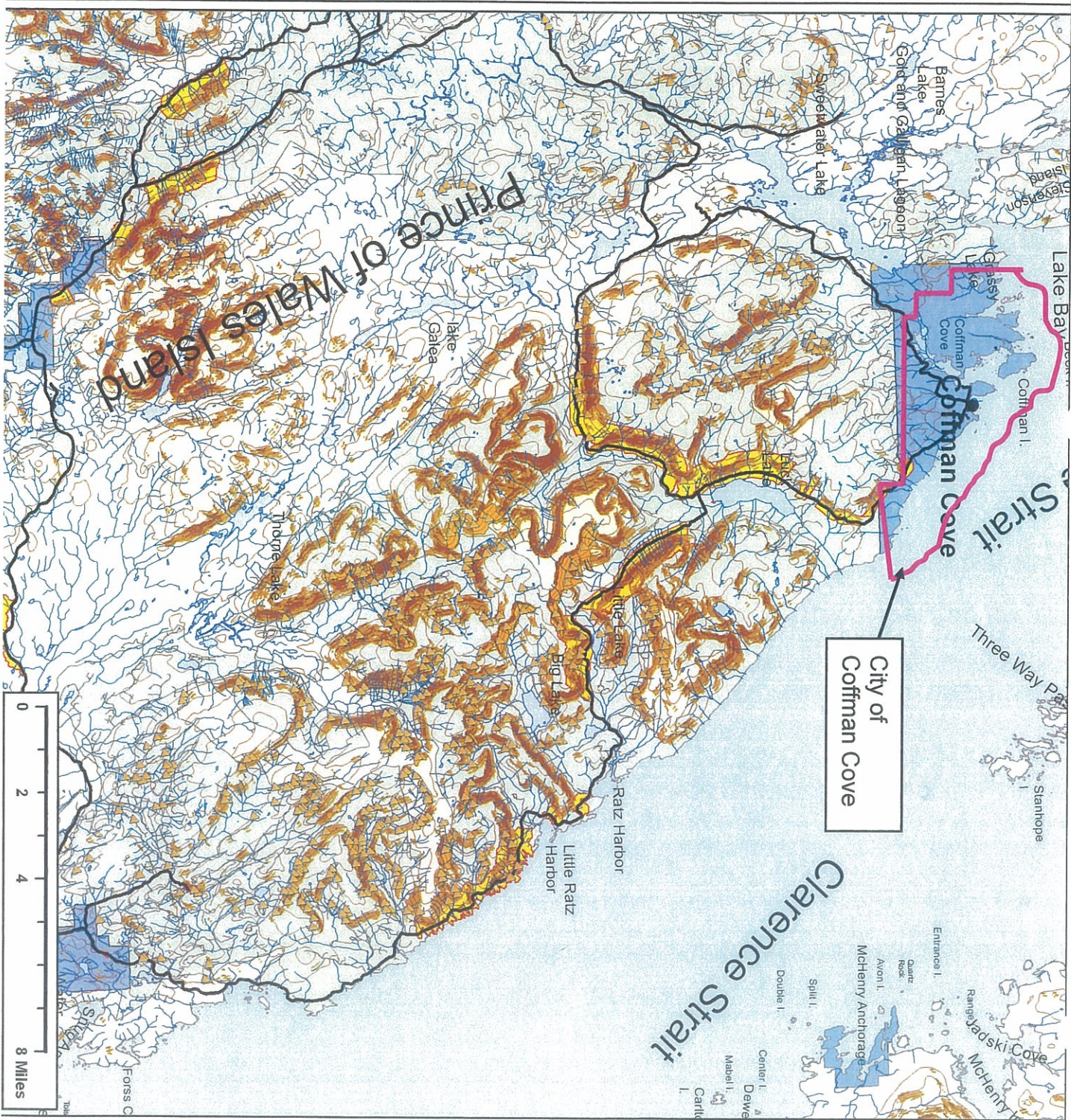
- Areas with public roads that are within a 1/2-mile downhill from slopes >50% that have forests that are open to commercial harvesting

- Areas with public roads and residential or commercial buildings that are within a 1/2-mile downhill from slopes >50% that have forests that are open to commercial harvesting

Land Status - Assembled from data provided by the Tongass National Forest and the Alaska Dept of Natural Resources (2007). Additional land management information was drawn from the USGS Protected Area Database for Alaska (2006).

Roads - Assembled from the Alaska Division of Forestry Southeast Area and Tongass National Forest Roads Inventories. Roads selected for exposure to public safety were those with a TUF Management Objective of 3 (suitable for passenger cars) or higher, with additional roads identified by the Landslides ST&C.

Slopes - Calculated using the 20 meter Digital Elevation Model developed by NASA Shuttle Radar Topography Mission (SRTM), 2000.



SCOPING MAP Public Safety & Landslide Hazards Thorne Bay Area

Land Manager

- USFS
- USFS - Natural Land Cover
- State of Alaska
- Mental Health Lands Trust
- University of Alaska
- ANCSCA Corporation
- Private/Local Government

- USFS Documented Landslides (polygon)
- USFS Documented Landslides (point)

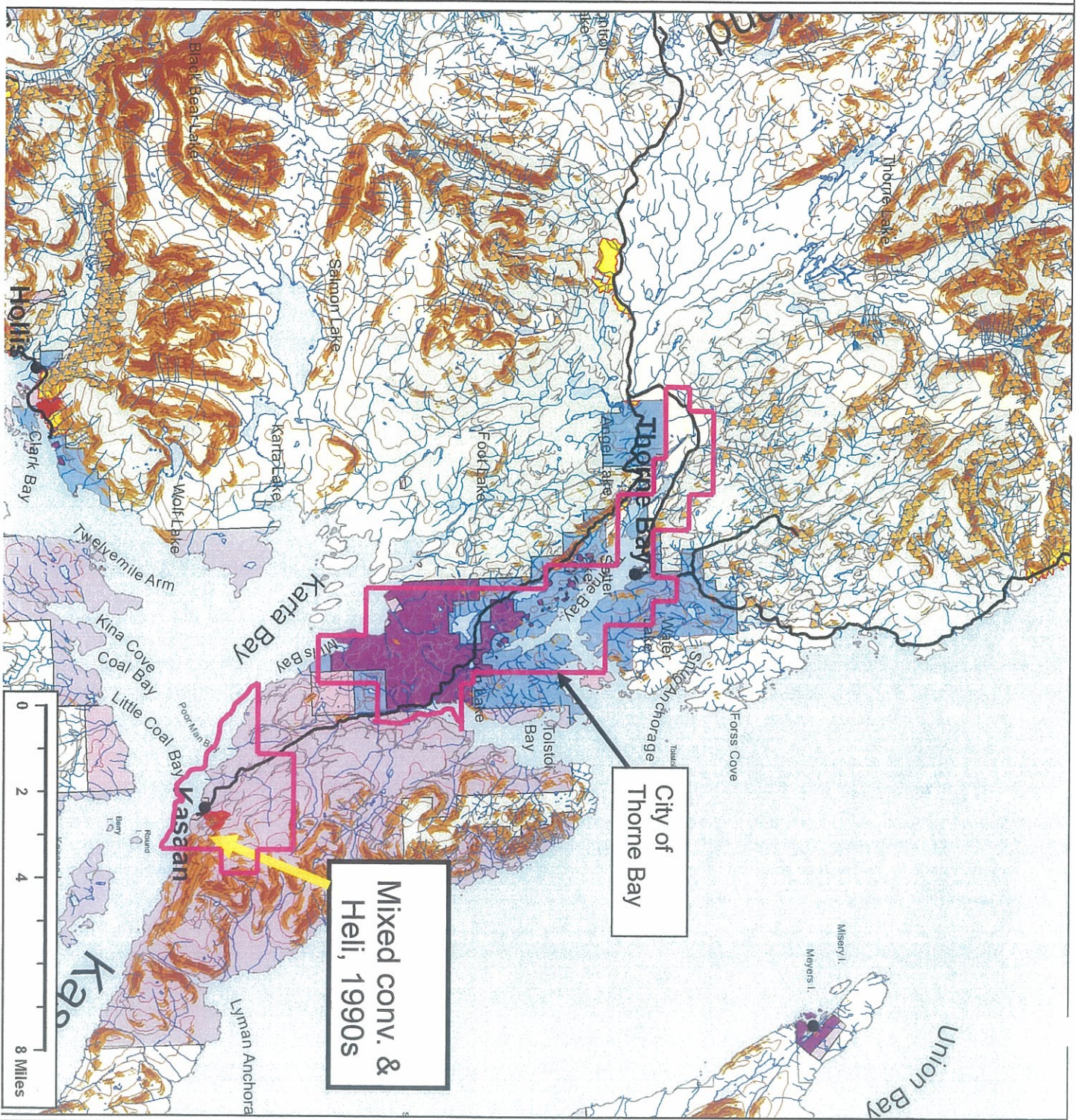
Analysis Road

- Other Forest Roads
- 50% - 67% Slope
- 67%+ Slope
- Areas with public roads that are within a 1/2-mile downhill from slopes >50% that have forests that are open to commercial harvesting
- Areas with public roads and residential or commercial buildings that are within a 1/2-mile downhill from slopes >50% that have forests that are open to commercial harvesting

Land Status - Assembled from data provided by the Tongass National Forest and the Alaska Dept of Natural Resources (2007). Additional land management information was drawn from the USGS Protected Area Database for Alaska (2008).

Roads - Assembled from the Alaska Division of Forestry Southeast Area and Tongass National Forest Roads Inventories. Roads selected for exposure to public safety were those with a TWF Management Objective of 3 (suitable for passenger cars) or higher, with additional roads identified by the Landslides ST&C.

Slopes - Calculated using the 20 meter Digital Elevation Model developed by NASA Shuttle Radar Topography Mission (SRTM), 2000.



SCOPING MAP Public Safety & Landslide Hazards Klawock Area

Land Manager

- USFS
- USFS - Natural Land Cover
- State of Alaska
- Mental Health Lands Trust
- University of Alaska
- ANCSCA Corporation
- Private/Local Government

- USFS Documented Landslides (point)
- USFS Documented Landslides (polygon)

- Analysis Road

- Other Forest Roads

- 50% - 67% Slope

- 67%+ Slope

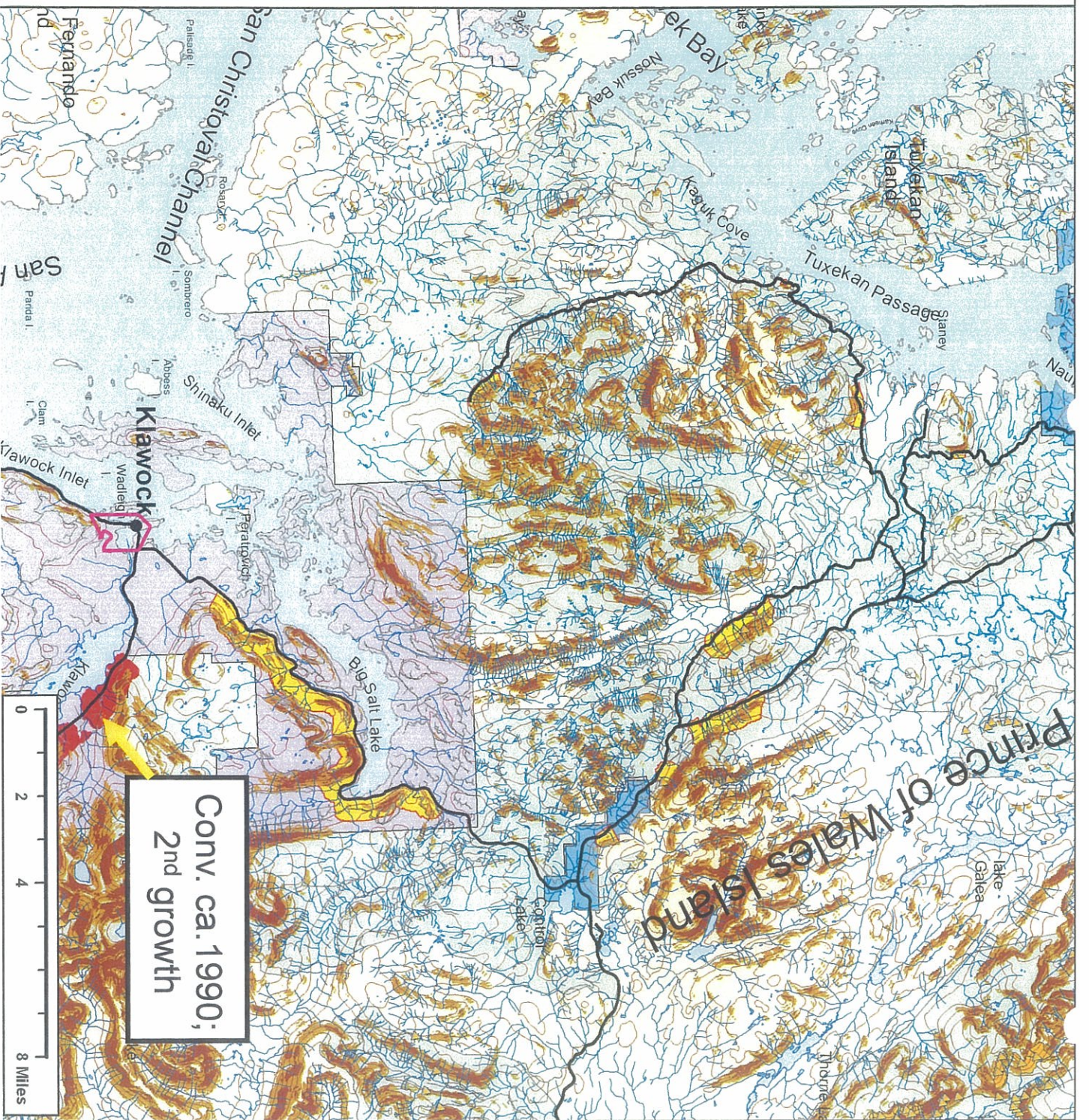
- Areas with public roads that are within a 1/2-mile downhill from slopes >50% that have forests that are open to commercial harvesting

- Areas with public roads and residential or commercial buildings that are within a 1/2-mile downhill from slopes >50% that have forests that are open to commercial harvesting

Land Status - Assembled from data provided by the Tongass National Forest and the Alaska Dept of Natural Resources (2007). Additional land management information was drawn from the USGS Protected Area Database for Alaska (2006).

Roads - Assembled from the Alaska Division of Forestry Southwest Area and Tongass National Forest Roads Inventories. Roads selected for exposure to public safety were those with a THF Management Objective of 3 (suitable for passenger cars) or higher, with additional roads identified by the Landslides ST&C.

Slopes - Calculated using the 20 meter Digital Elevation Model developed by NASA Shuttle Radar Topography Mission (SRTM), 2000.



SCO, JG MAP Public Safety & Landslide Hazards Craig Area

Land Manager

- USFS
- USFS - Natural Land Cover
- State of Alaska
- Mental Health Lands Trust
- University of Alaska
- ANCSA Corporation
- Private/Local Government

- USFS Documented Landslides (point)
- USFS Documented Landslides (polygon)

- Analysis Road

- Other Forest Roads

- 50% - 67% Slope

- 67%+ Slope

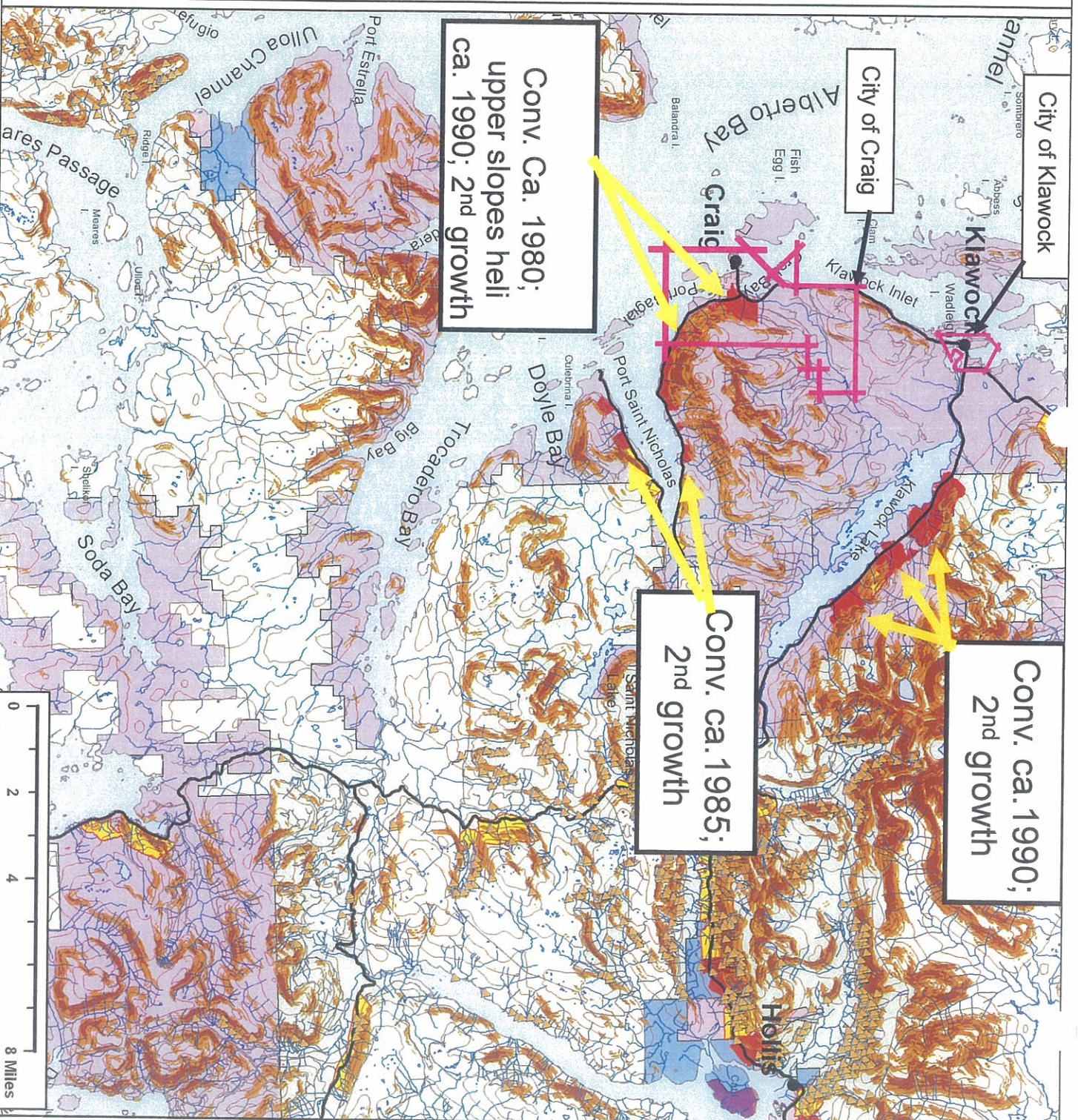
- Areas with public roads that are within a 1/2-mile downhill from slopes >50% that have forests that are open to commercial harvesting

- Areas with public roads and residential or commercial buildings that are within a 1/2-mile downhill from slopes >50% that have forests that are open to commercial harvesting

Land Status - Assembled from data provided by the Tongass National Forest and the Alaska Dept. of Natural Resources (2007). Additional land management information was drawn from the USGS Protected Area Database for Alaska (2006).

Roads - Assembled from the Alaska Division of Forestry Southeast Area and Tongass National Forest Roads Inventories. Roads selected for exposure to public safety were those with a TNEF Management Objective of 3 (suitable for passenger cars) or higher, with additional roads identified by the Landslides SR8C.

Slopes - Calculated using the 20 meter Digital Elevation Model developed by NASA Shuttle Radar Topography Mission (SRTM), 2000.



Conv. Ca. 1980;
upper slopes heli
ca. 1990; 2nd growth

Conv. ca. 1985;
2nd growth

Conv. ca. 1990;
2nd growth

SCC, .ING MAP Public Safety & Landslide Hazards Hollis Area

Land Manager

- USFS
- USFS - Natural Land Cover
- State of Alaska
- Mental Health Lands Trust
- University of Alaska
- ANCSCA Corporation
- Private/Local Government

- USFS Documented Landslides (point)
- USFS Documented Landslides (polygon)

- Analysis Road

- Other Forest Roads

- 50% - 67% Slope

- 67%+ Slope

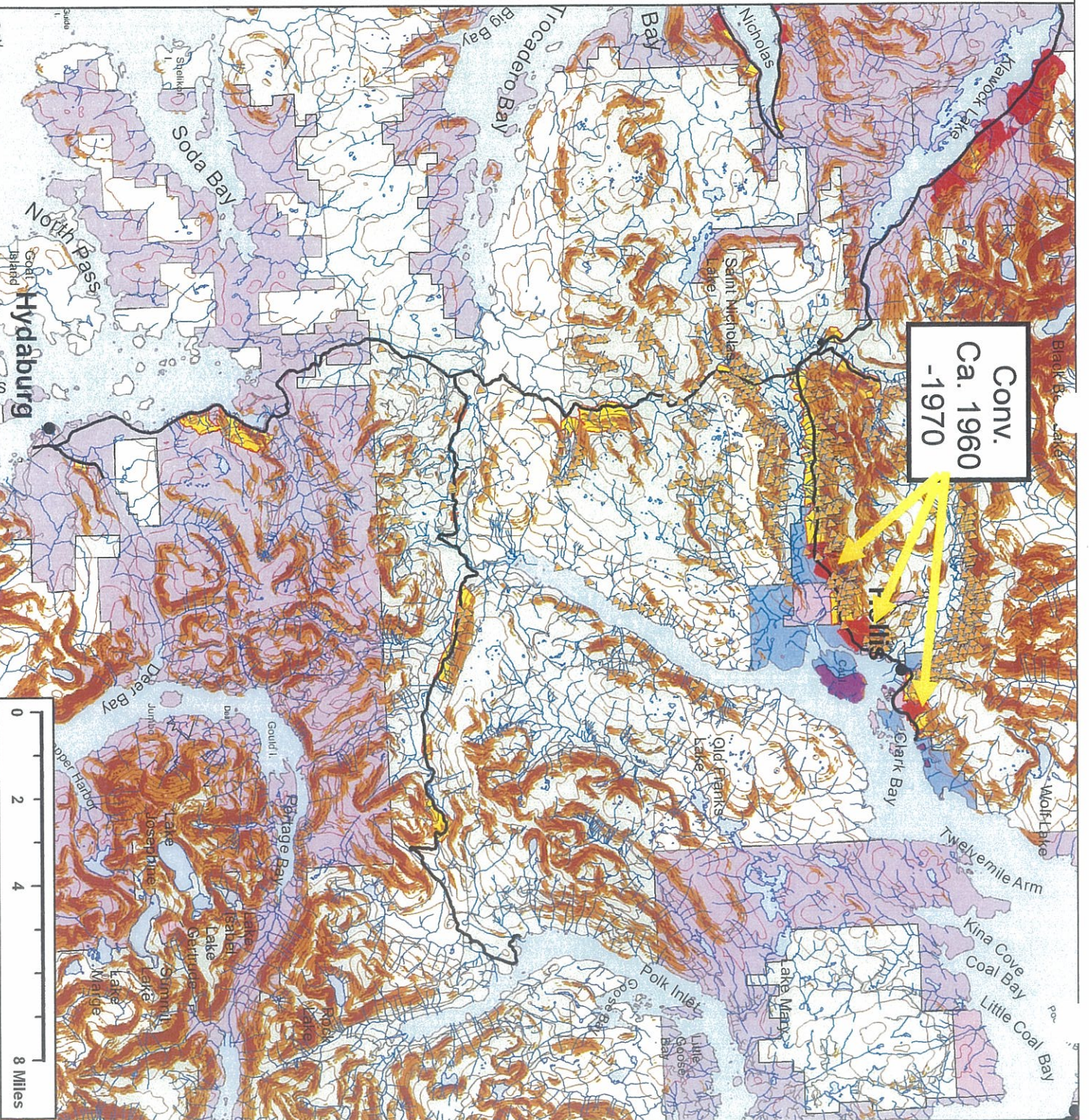
- Areas with public roads that are within a 1/2-mile downhill from slopes >50% that have forests that are open to commercial harvesting

- Areas with public roads and residential or commercial buildings that are within a 1/2-mile downhill from slopes >50% that have forests that are open to commercial harvesting

Land Status - Assembled from data provided by the Tongass National Forest and the Alaska Dept of Natural Resources (2007). Additional land management information was drawn from the USGS Protected Area Database for Alaska (2006).

Roads - Assembled from the Alaska Division of Forestry Southeast Area and Tongass National Forest Roads Inventories. Roads selected for exposure to public safety were those with a TINF Management Objective of 3 (suitable for passenger cars) or higher, with additional roads identified by the Landslides ST&C.

Slopes - Calculated using the 20 meter Digital Elevation Model developed by NASA Shuttle Radar Topography Mission (SRTM), 2000.



SCOPING MAP Public Safety & Landslide Hazards Coffman Cove Area

Land Manager

- USFS
- USFS - Natural Land Cover
- State of Alaska
- Mental Health Lands Trust
- University of Alaska
- ANCSCA Corporation
- Private/Local Government

- USFS Documented Landslides (polygon)
- USFS Documented Landslides (point)

- Analysis Road
- Other Forest Roads
- 50% - 67% Slope
- 67%+ Slope

- Areas with public roads that are within a 1/4-mile downhill from slopes >50% that have forests that are open to commercial harvesting

- Areas with public roads and residential or commercial buildings that are within a 1/4-mile downhill from slopes >50% that have forests that are open to commercial harvesting

Land Status - Assembled from data provided by the Tongass National Forest and the Alaska Dept of Natural Resources (2007). Additional land management information was drawn from the USGS Protected Area Database for Alaska (2006).

Roads - Assembled from the Alaska Division of Forestry Southeast Area and Tongass National Forest Roads inventories. Roads selected for exposure to public safety were those with a TNF Management Objective of 3 (suitable for passenger cars) or higher, with additional roads identified by the Landslides ST&C.

Slopes - Calculated using the 20 meter Digital Elevation Model developed by NASA Shuttle Radar Topography Mission (SRTM), 2000.

