

SCOPING MAP Public Safety & Landslide Hazards Mittkof Island Area

Land Manager

- USFS
- USFS - Natural Land Cover
- State of Alaska
- Mental Health Lands Trust
- University of Alaska
- ANCSA Corporation
- Private/Local Government

- USFS Documented Landslides (point)
- USFS Documented Landslides (polygon)

- Analysis Road

- Other Forest Roads

- 50% - 67% Slope

- 67%+ Slope

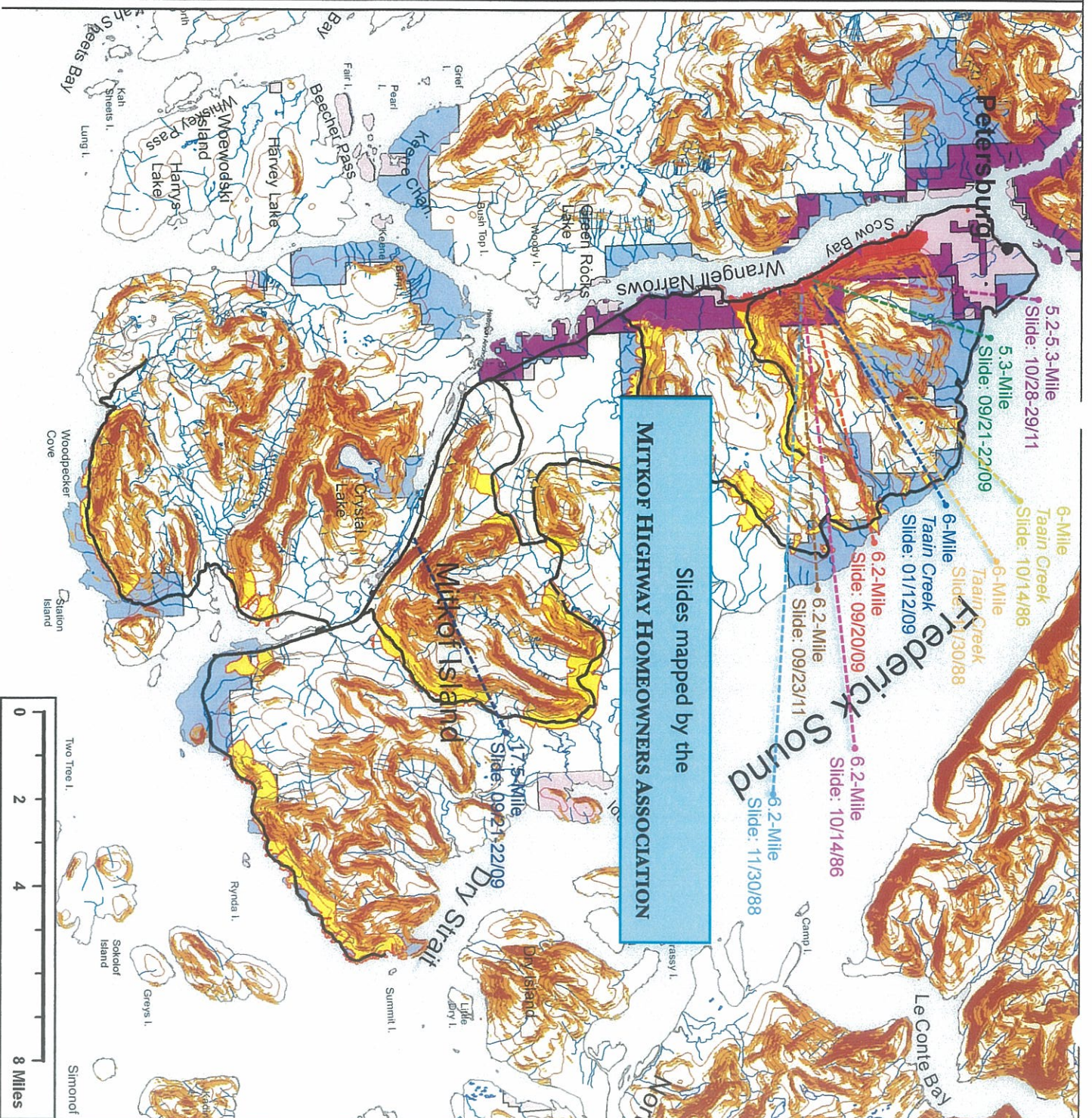
- Areas with public roads that are within a 1/2-mile downhill from slopes >50% that have forests that are open to commercial harvesting

- Areas with public roads and residential or commercial buildings that are within a 1/2-mile downhill from slopes >50% that have forests that are open to commercial harvesting

Land Status - Assembled from data provided by the Tongass National Forest and the Alaska Dept. of Natural Resources (2007). Additional land management information was drawn from the USGS Protected Area Database for Alaska (2006).

Roads - Assembled from the Alaska Division of Forestry Southeast Area and Tongass National Forest Roads Inventories. Roads selected for exposure to public safety were those with a TNEF Management Objective of 3 (suitable for passenger cars) or higher, with additional roads identified by the Landslides ST&C.

Slopes - Calculated using the 20 meter Digital Elevation Model developed by NASA Shuttle Radar Topography Mission (SRTM), 2000.



SCOPING MAP Public Safety & Landslide Hazards Cordova Area

Land Manager

- Bureau of Land Management
- Local Government
- Native Corporation
- Other Private
- Protected Natural Land Cover
- State of Alaska
- USDA Forest Service

- USFS Documented Landslides (point)
- USFS Documented Landslides (polygon)

- Analysis Road

- Other Forest Roads

- 50% - 67% Slope

- 67%+ Slope

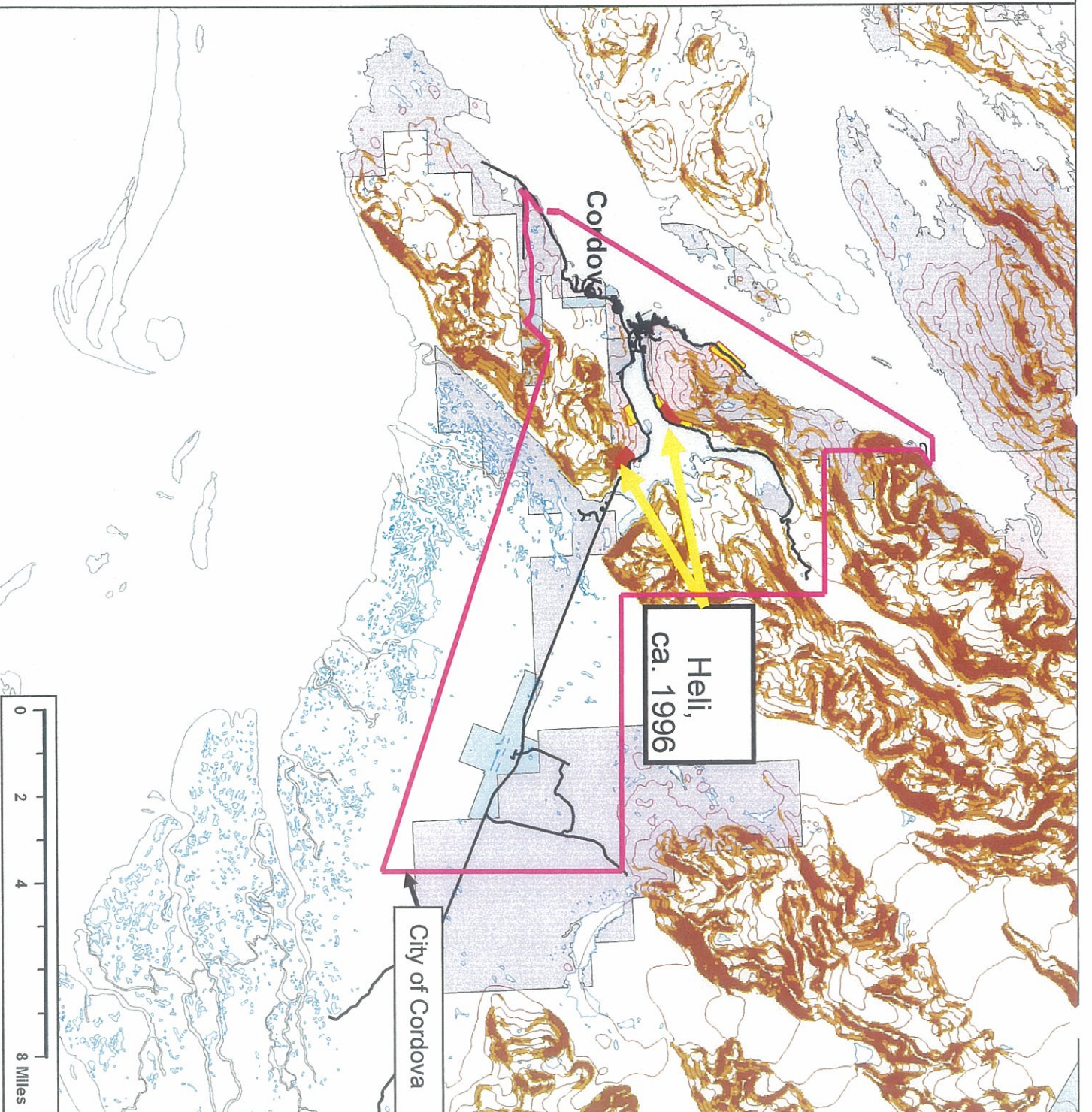
- Areas with public roads that are within a 1/2-mile downhill from slopes >50% that have forests that are open to commercial harvesting

- Areas with public roads and residential or commercial buildings that are within a 1/2-mile downhill from slopes >50% that have forests that are open to commercial harvesting

Land Status - Assembled from data provided by the Tongass National Forest and the Alaska Dept of Natural Resources (2007). Additional land management information was drawn from the USGS Protected Area Database for Alaska (2006).

Roads - Assembled from the Alaska Division of Forestry Southeast Area and Tongass National Forest Roads Inventories. Roads selected for exposure to public safety were those with a TNF Management Objective of 3 (suitable for passenger cars) or higher, with additional roads identified by the Landslides ST&C.

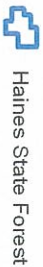
Slopes - Calculated using the 60 meter digital elevation model (DEM) developed from the USGS 1:50,000 Alaska maps series.



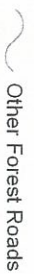
SCOPING MAP Public Safety & Landslide Hazards Haines Area

Land Manager

- BLM
- State of Alaska (SOA)
- SOA - Natural Land Cover
- Mental Health Lands Trust
- University of Alaska
- ANCSCA Corporation
- Private/Local Government



- USFS Documented Landslides (polygon)
- USFS Documented Landslides (point)

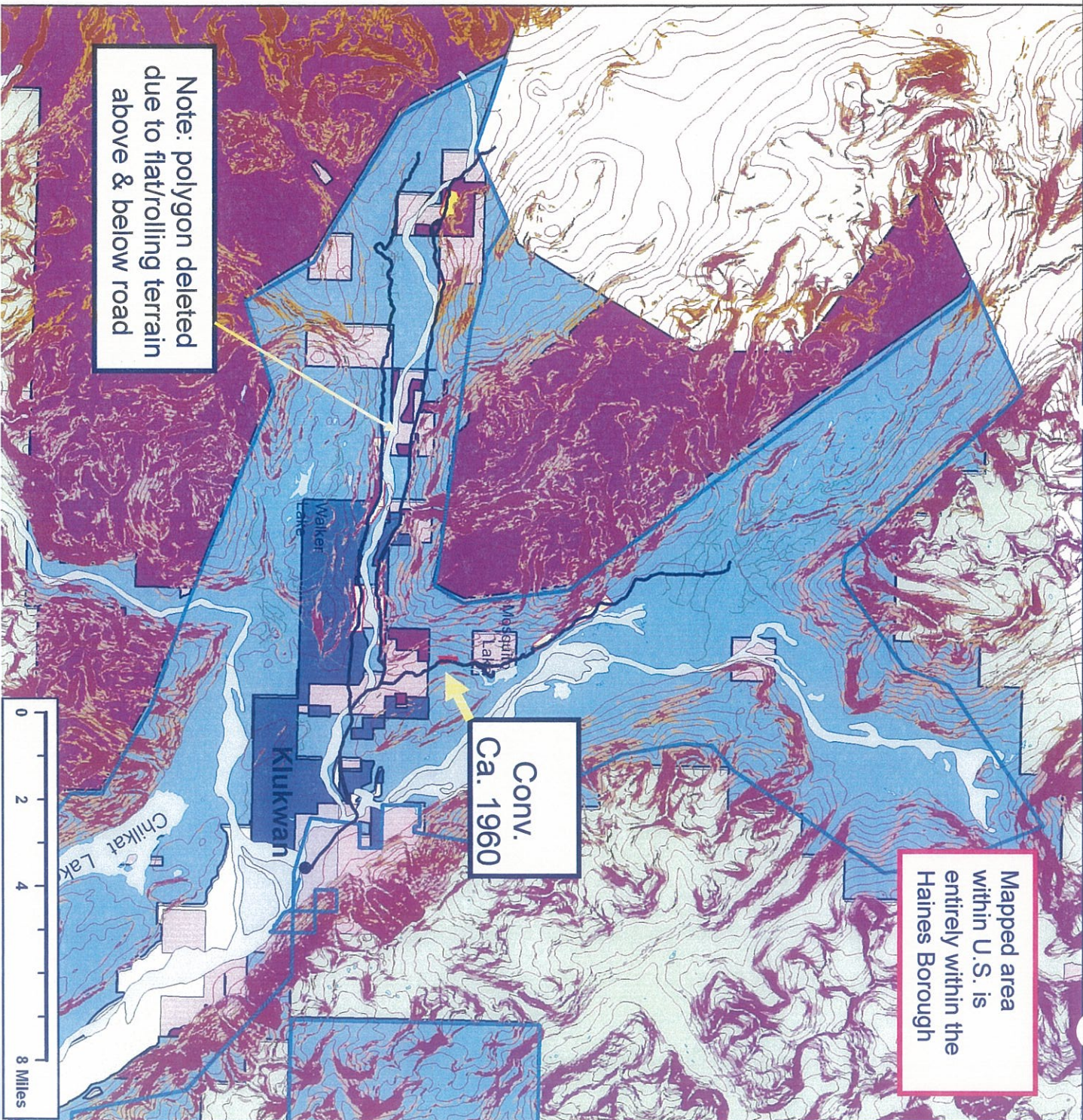


- Areas with public roads that are within a 1/2-mile downhill from slopes >50% that have forests that are open to commercial harvesting
- Areas with public roads and residential or commercial buildings that are within a 1/2-mile downhill from slopes >50% that have forests that are open to commercial harvesting

Land Status - Assembled from data provided by the Tongass National Forest and the Alaska Dept of Natural Resources (2007). Additional land management information was drawn from the USGS Protected Area Database for Alaska (2006).

Roads - Assembled from the Alaska Division of Forestry Southeast Area and Tongass National Forest Roads Inventories. Roads selected for exposure to public safety were those with a TNF Management Objective of 3 (suitable for passenger cars) or higher, with additional roads identified by the Landslides SR&C.

Slopes - Calculated using the 20 meter Digital Elevation Model developed by NASA Shuttle Radar Topography Mission (SRTM), 2000.



SCOPING MAP Public Safety & Landslide Hazards Hoonah Area

Land Manager

- USFS
- USFS - Natural Land Cover
- State of Alaska
- Mental Health Lands Trust
- University of Alaska
- ANCSCA Corporation
- Private/Local Government

- USFS Documented Landslides (polygon)
- USFS Documented Landslides (point)

- Analysis Road

- Other Forest Roads

- 50% - 67% Slope

- 67%+ Slope

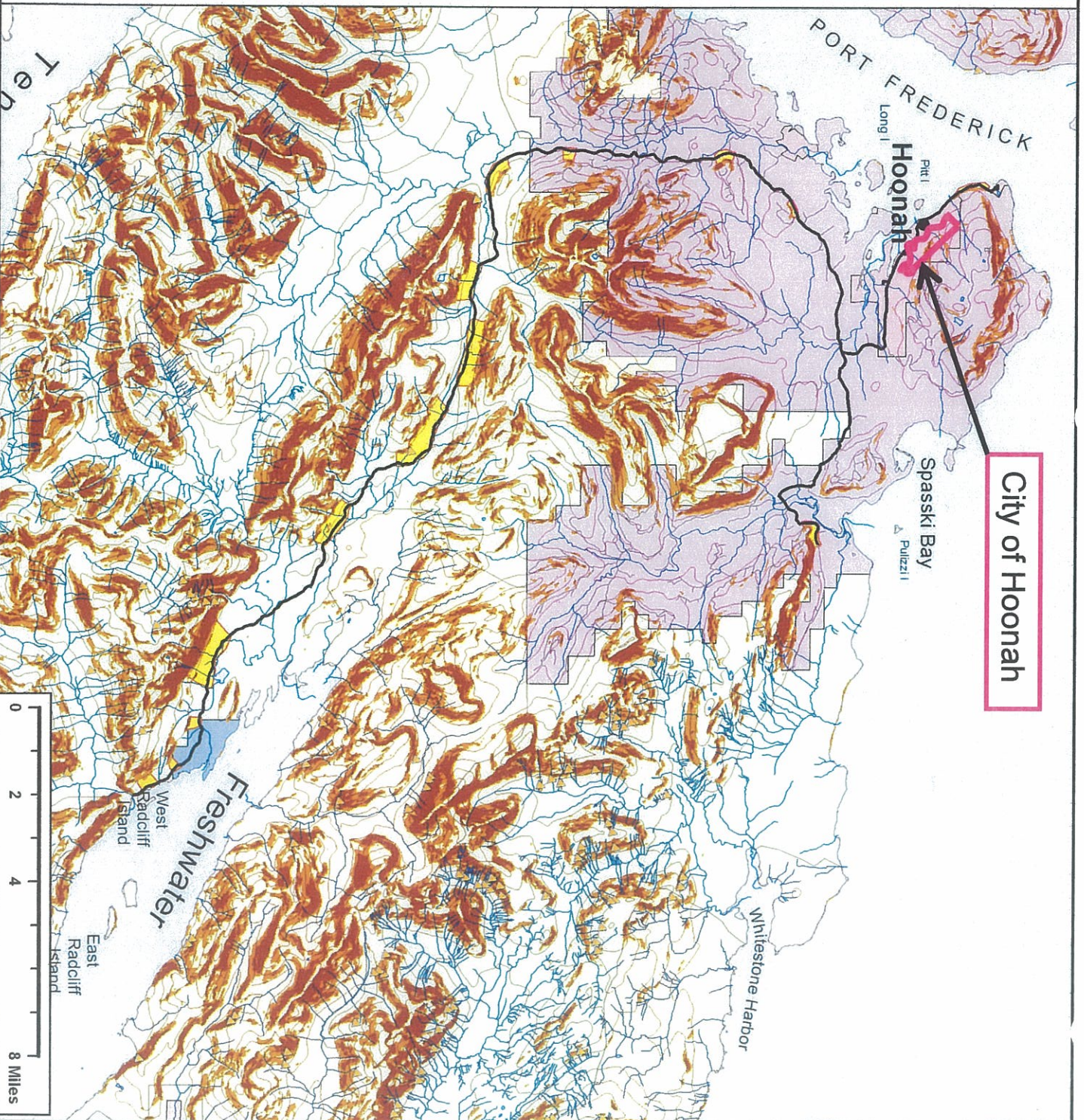
- Areas with public roads that are within a 1/2-mile downhill from slopes >50% that have forests that are open to commercial harvesting

- Areas with public roads and residential or commercial buildings that are within a 1/2-mile downhill from slopes >50% that have forests that are open to commercial harvesting

Land Status - Assembled from data provided by the Tongass National Forest and the Alaska Dept of Natural Resources (2007). Additional land management information was drawn from the USGS Protected Area Database for Alaska (2006).

Roads - Assembled from the Alaska Division of Forestry Southeast Area and Tongass National Forest Roads Inventories. Roads selected for exposure to public safety were those with a TNF Management Objective of 3 (suitable for passenger cars) or higher, with additional roads identified by the Landslides ST&C.

Slopes - Calculated using the 20 meter Digital Elevation Model developed by NASA Shuttle Radar Topography Mission (SRTM), 2000.



SCC, .NG MAP Public Safety & Landslide Hazards Mikof Island Area

Land Manager

- USFS
- USFS - Natural Land Cover
- State of Alaska
- Mental Health Lands Trust
- University of Alaska
- ANCSA Corporation
- Private/Local Government

- USFS Documented Landslides (point)
- USFS Documented Landslides (polygon)

- Analysis Road

- Other Forest Roads

- 50% - 67% Slope

- 67%+ Slope

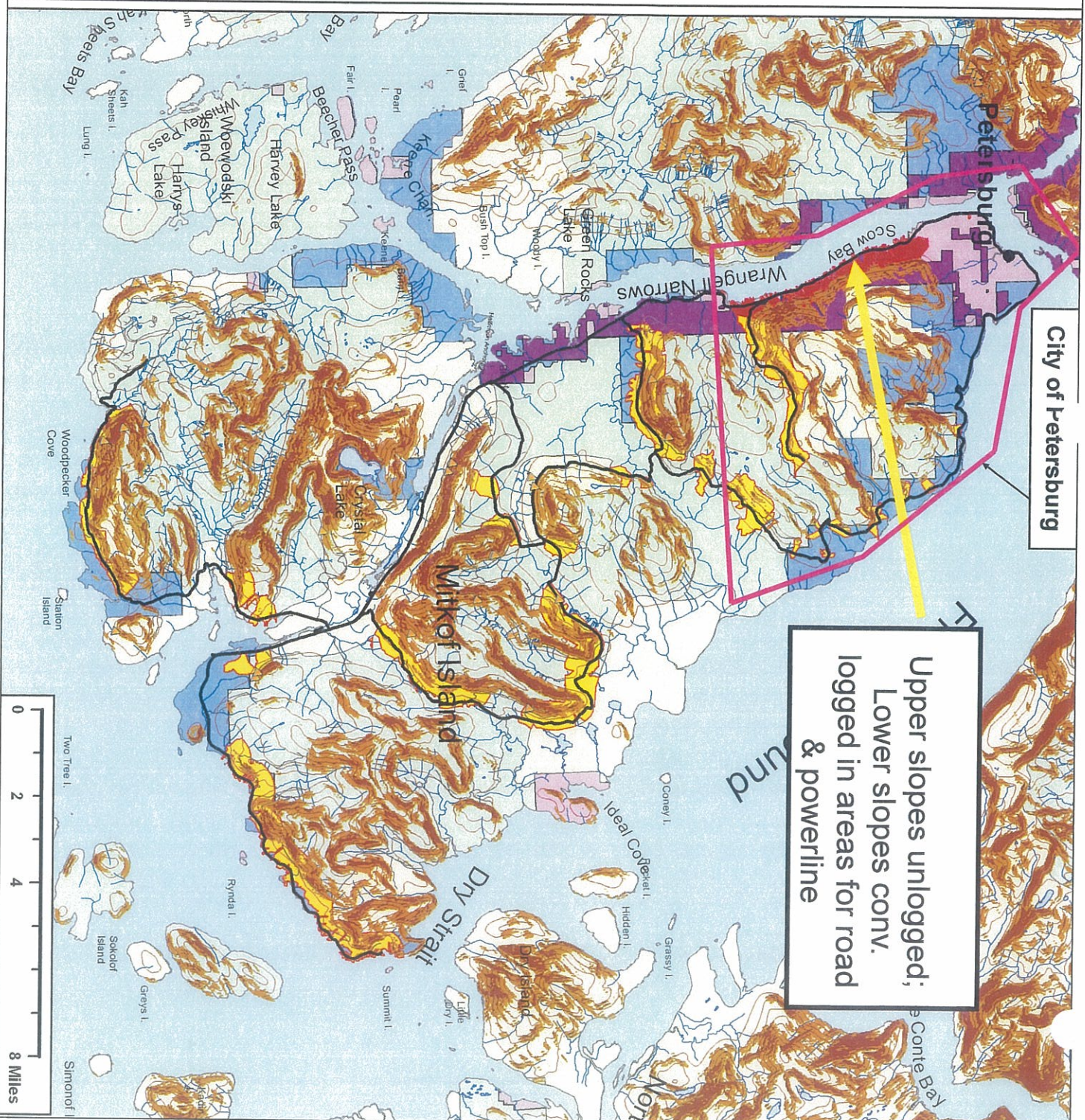
- Areas with public roads that are within a 1/2-mile downhill from slopes >50% that have forests that are open to commercial harvesting

- Areas with public roads and residential or commercial buildings that are within a 1/2-mile downhill from slopes >50% that have forests that are open to commercial harvesting

Land Status - Assembled from data provided by the Tongass National Forest and the Alaska Dept of Natural Resources (2007). Additional land management information was drawn from the USGS Protected Area Database for Alaska (2006).

Roads - Assembled from the Alaska Division of Forestry Southeast Area and Tongass National Forest Roads Inventories. Roads selected for exposure to public safety were those with a TNF Management Objective of 3 (suitable for passenger cars) or higher, with additional roads identified by the Landslides ST & C.

Slopes - Calculated using the 20 meter Digital Elevation Model developed by NASA Shuttle Radar Topography Mission (SRTM), 2000.



SCC, iNG MAP Public Safety & Landslide Hazards Wrangell Area

Land Manager

- USFS
- USFS - Natural Land Cover
- State of Alaska
- Mental Health Lands Trust
- University of Alaska
- ANCSCA Corporation
- Private/Local Government

- USFS Documented Landslides (point)
- USFS Documented Landslides (polygon)

- Analysis Road

- Other Forest Roads

- 50% - 67% Slope

- 67%+ Slope

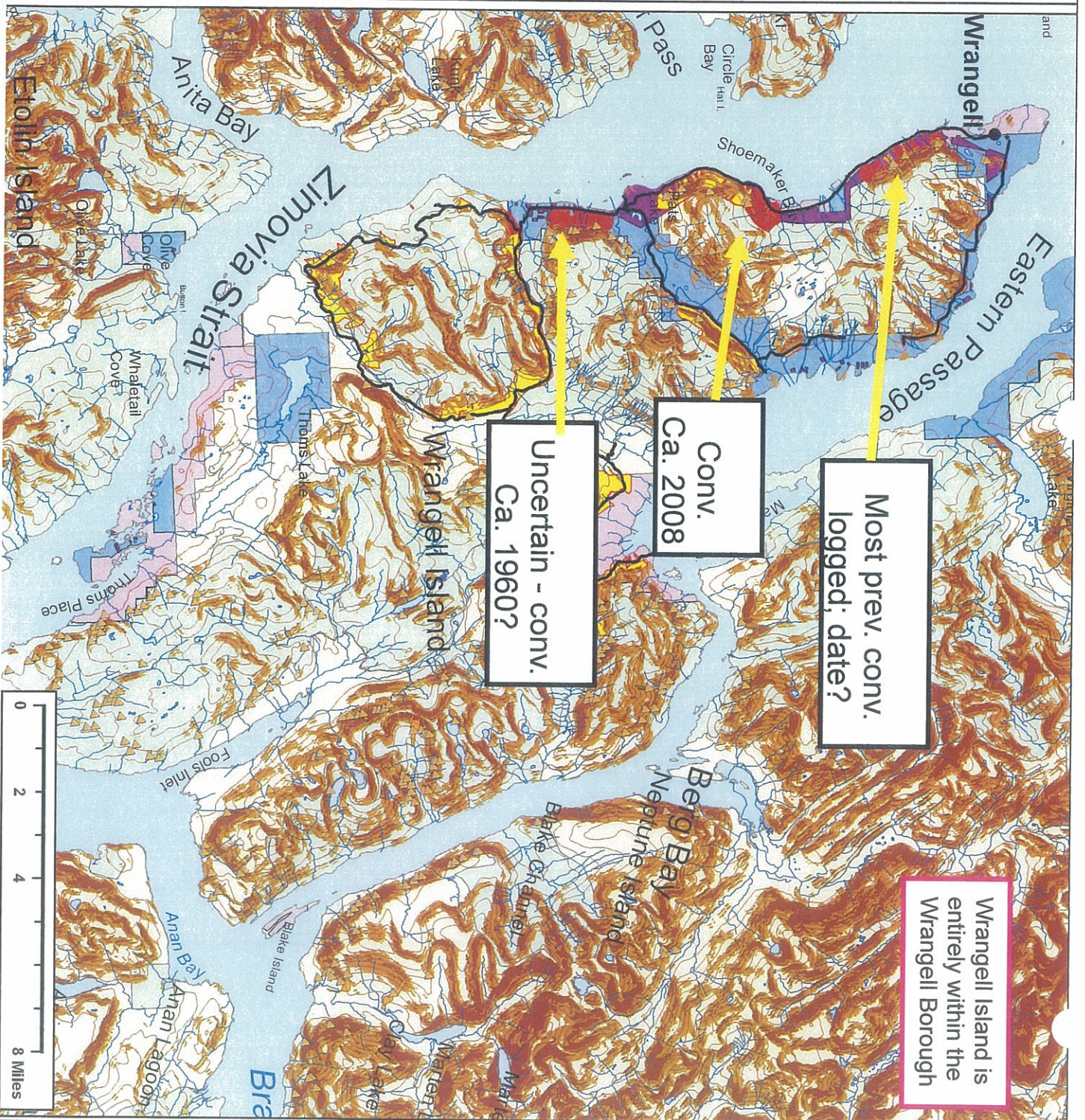
- Areas with public roads that are within a 1/2-mile downhill from slopes >50% that have forests that are open to commercial harvesting

- Areas with public roads and residential or commercial buildings that are within a 1/2-mile downhill from slopes >50% that have forests that are open to commercial harvesting

Land Status - Assembled from data provided by the Tongass National Forest and the Alaska Dept of Natural Resources (2007). Additional land management information was drawn from the USGS Protected Area Database for Alaska (2006).

Roads - Assembled from the Alaska Division of Forestry, Southeast Area and Tongass National Forest Roads Inventories. Roads selected for exposure to public safety were those with a TNF Management Objective of 3 (suitable for passenger cars) or higher, with additional roads identified by the Landslides ST&C.

Slopes - Calculated using the 20 meter Digital Elevation Model developed by NASA Shuttle Radar Topography Mission (SRTM), 2000.



SCURTING MAP Public Safety & Landslide Hazards El Capitan Area

Land Manager

- USFS
- USFS - Natural Land Cover
- State of Alaska
- Mental Health Lands Trust
- University of Alaska
- ANCSCA Corporation
- Private/Local Government

- USFS Documented Landslides (polygon)
- USFS Documented Landslides (point)

- Analysis Road

- Other Forest Roads

- 50% - 67% Slope

- 67%+ Slope

- Areas with public roads that are within a 1/2-mile downhill from slopes >50% that have forests that are open to commercial harvesting

- Areas with public roads and residential or commercial buildings that are within a 1/2-mile downhill from slopes >50% that have forests that are open to commercial harvesting

Land Status - Assembled from data provided by the Tongass National Forest and the Alaska Dept of Natural Resources (2007). Additional land management information was drawn from the USGS Protected Area Database for Alaska (2006).

Roads - Assembled from the Alaska Division of Forestry Southeast Area and Tongass National Forest Roads Inventories. Roads selected for exposure to public safety were those with a TNF Management Objective of 3 (suitable for passenger cars) or higher, with additional roads identified by the Landslides SR&C.

Slopes - Calculated using the 20 meter Digital Elevation Model developed by NASA Shuttle Radar Topography Mission (SRTM), 2000.

