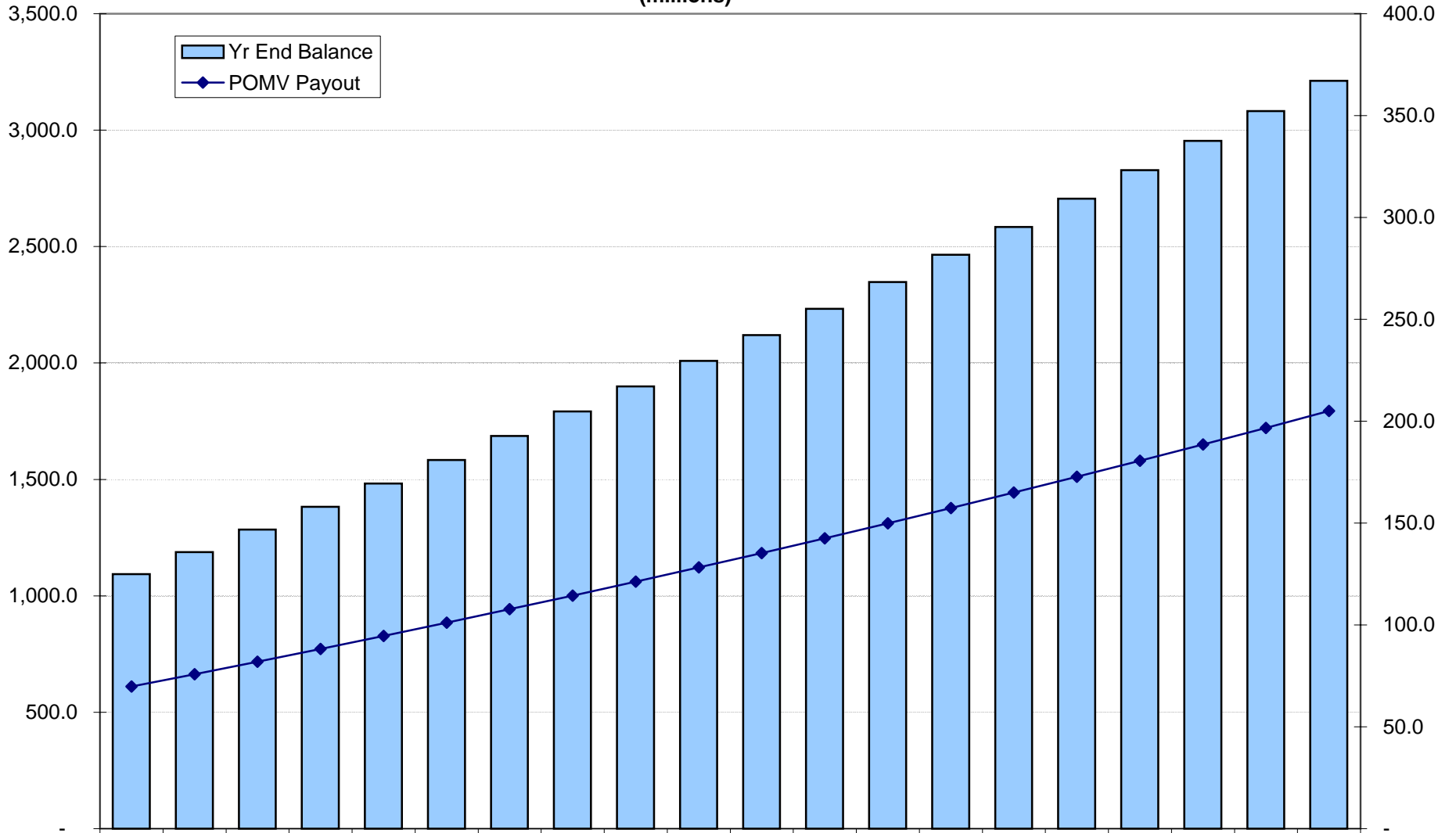


Transportation Fund
Scenario - 8.28% IR; 6% POMV, \$80/yr new revenue to fund
(millions)



Yr End Balance	1,093.0	1,187.7	1,284.1	1,382.2	1,482.0	1,583.7	1,687.1	1,792.4	1,899.6	2,008.6	2,119.7	2,232.7	2,347.7	2,464.7	2,583.9	2,705.2	2,828.6	2,954.2	3,082.1	3,212.3
POMV Payout	69.8	75.8	82.0	88.2	94.6	101.1	107.7	114.4	121.2	128.2	135.3	142.5	149.9	157.3	164.9	172.7	180.5	188.6	196.7	205.0