

Overview of the Division of Commercial Fisheries



John Hilsinger
Director

Division of Commercial Fisheries Mission

Manage, protect, rehabilitate, enhance, and develop the fisheries and aquatic plant resources in the interest of the economy and general well being of the state, consistent with the sustained yield principle and subject to allocations established through public regulatory processes.

Division of Commercial Fisheries Primary Responsibilities

- Manage commercial, personal use, and subsistence fisheries within state waters
- Manage shellfish species and some groundfish out to 200 miles
- Conduct applied research on Alaska's aquatic resources
- Plan and permit fish hatcheries and mariculture operations
- Negotiate fishing agreements subject to the Pacific Salmon Treaty and Alaska-Yukon Treaty
- Coordinate with federal and international fisheries management agencies

Kuskokwim Bay Salmon Fishermen Delivering in Quinahak

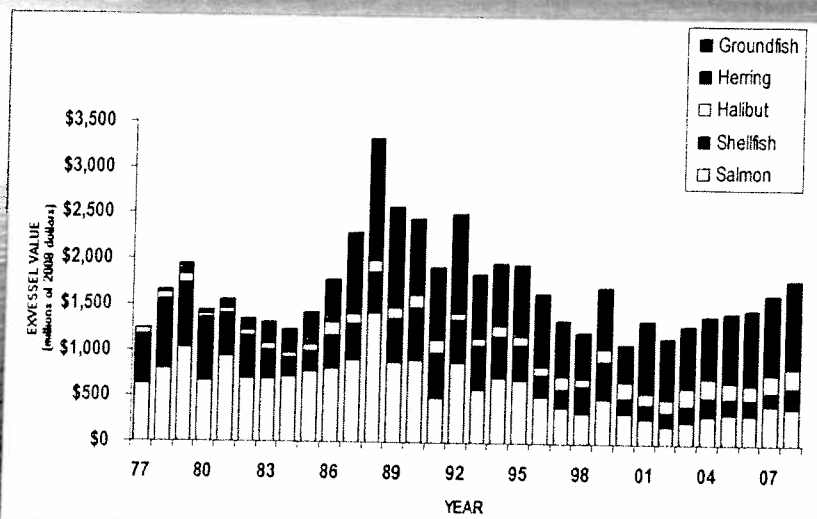


Crab Boat Setting Pots in the Bering Sea



Exvessel Value of Alaska's Commercial Fisheries

(Adjusted to 2008 Dollars)



Economic Impact of Seafood Industry on Alaska's Economy in 2007

(Source: Northern Economics, Inc. 2009)

- Generated 78,519 jobs employed in seafood harvesting, processing sectors, and support industries
- Approximately 48,467 of these jobs were held by Alaskans
- Generated \$774.7 million in direct payments to labor with \$237 million going to Alaska residents
- Generated total sales of \$3.6 billion within Alaska
- Paid more in taxes to state general fund than any other industry except oil and gas

Division of Commercial Fisheries Core Services

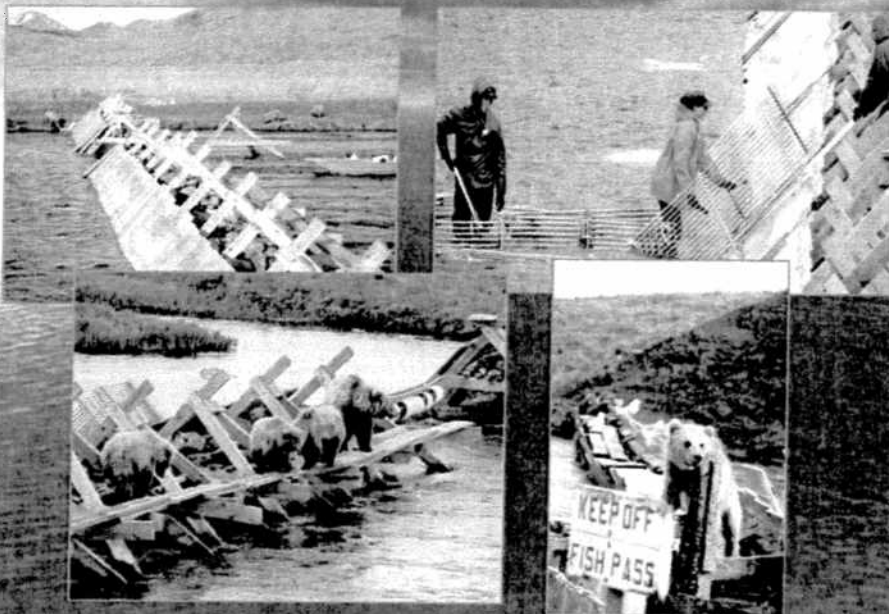
- Stock Assessment & Applied Research
- Harvest Management
- Laboratory Services
- Aquaculture Permitting
- Data Processing
- Information Services and Public Participation

Stock Assessment and Applied Research

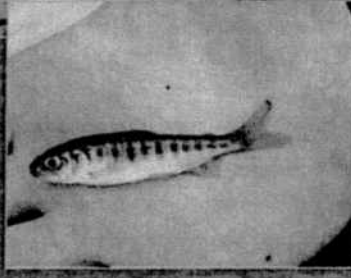
Salmon Escapement Enumeration

- Weirs, Towers, Sonar, Foot/Aerial Surveys
- Juvenile Salmon Estimation
- Groundfish and Shellfish Surveys
- Herring Spawn Deposition and Hydroacoustic Surveys
- Aerial Herring Surveys
- Dive Surveys
- Biological, Genetic, Coded-Wire Tag Sampling

Salmon Enumeration and Sampling



Salmon Enumeration and Sampling



Other categories and examples of stock assessment



Harvest Management

- Assisting the Board of Fisheries in establishing regulations and management plans
- Opening and closing fishing areas and setting fishing time
- Collecting harvest and biological data
- Writing annual management reports



Laboratory Services

- Pathology Laboratory
- Coded-Wire Tag and Otolith Aging Laboratory
- Genetic Stock Identification Laboratory



Otoliths or Ear Bones

Aquaculture Permitting



- Private Non-Profit Salmon Hatcheries
- Aquatic Shellfish Hatchery
- Aquatic Shellfish Farms

Data Processing

- Fish tickets systems
- eLanding electronic catch reporting system
- Internet-accessible inseason catch and escapement databases
- Geographical Information System databases
- Internet-accessible news release database
- Seafood processor/buyer intent to operate system
- Commercial Operator Annual Reports (COAR)
- Databases for biological data

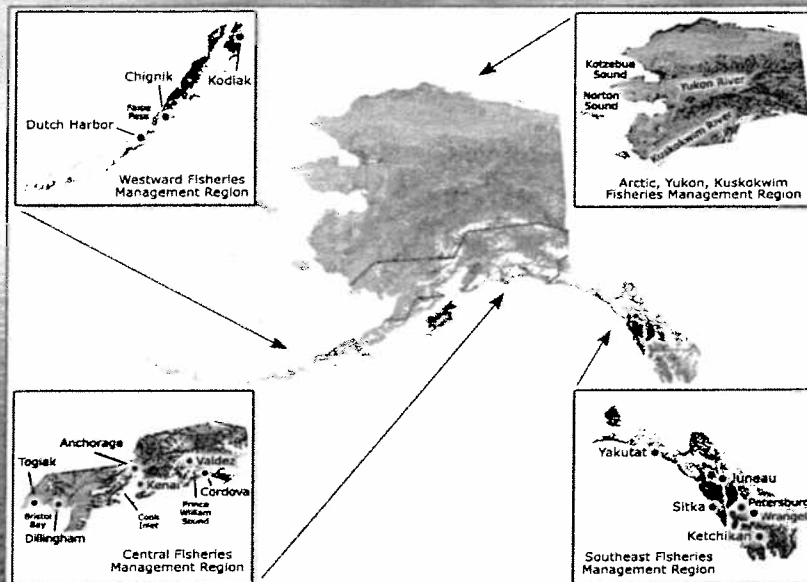
Information Services and Public Information

- Design and maintain division website
- Publish brochures and other informational materials on divisional programs
- Produce upon request custom reports from fish ticket and COAR databases
- Administer divisional confidentiality policies
- Develop and administer divisional publication policies and procedures

Organization of the Division

- Southeast Fisheries Management Region - Douglas
- Central Fisheries Management Region - Anchorage
- A-Y-K Fisheries Management Region - Anchorage
- Westward Fisheries Management Region - Kodiak
- Divisional Headquarters - Juneau

Fisheries Management Regions



Permanent and Seasonal Staff



Bethel Office June 2006

In fiscal year 2009

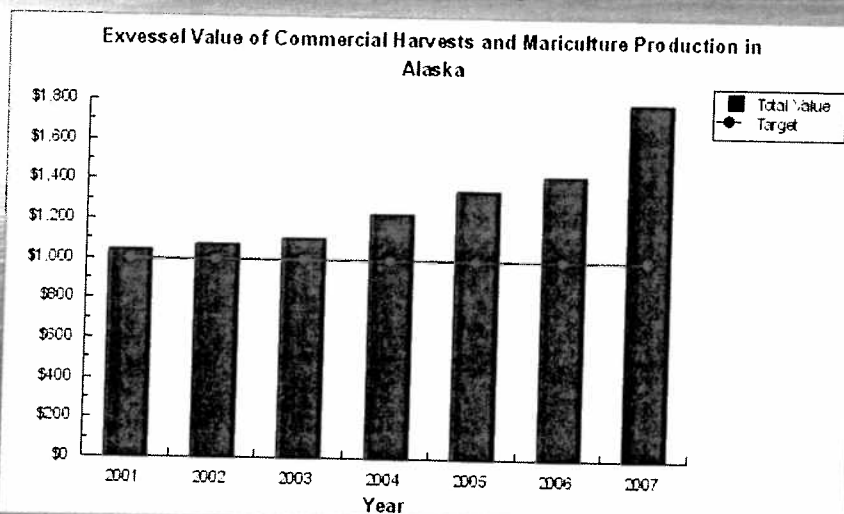
- 310 permanent staff
- 472 seasonal staff
- 20 permanent offices
- 84 seasonal offices/field camps
- 6 large research vessels

Missions and Measures Targets

1. Exvessel value of commercial harvests and mariculture production above \$1 billion
2. Reproductive goals achieved for more than 80% of monitored stocks
3. Develop genetic baselines for Alaskan Chinook, chum, and sockeye stocks that will include 100 stocks in each baseline
4. All aquatic farms operating with current permits

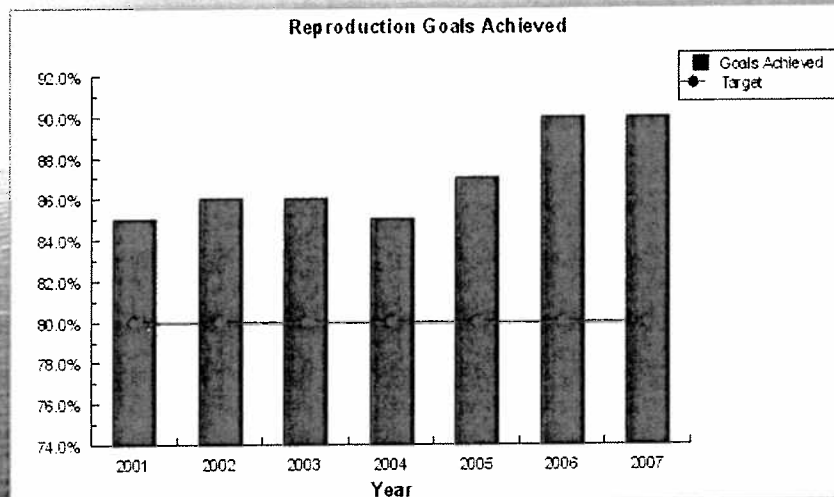
Missions and Measures

1. Exvessel value of commercial harvests and mariculture production above \$1 billion annually



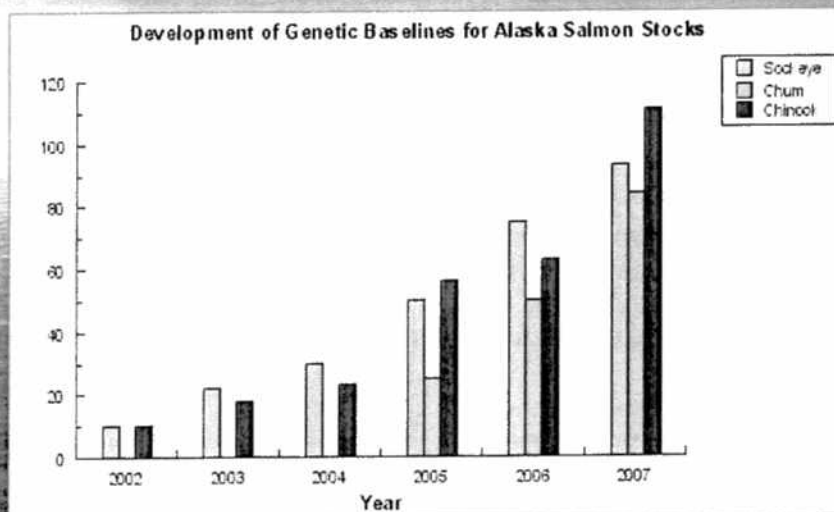
Missions and Measures

2. Reproductive goals achieved for more than 80% of monitored stocks



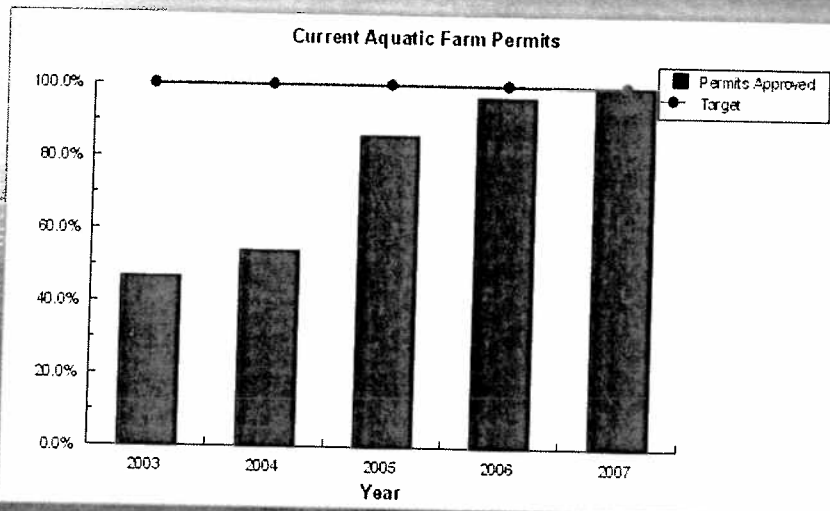
Missions and Measures

3. Develop genetic baselines for Alaskan Chinook, chum, and sockeye stocks that will include 100 stocks in each baseline



Missions and Measures

4. All aquatic farms operating with current permits



FY 2010 Budget Request

- Total request = \$60,488.8
- FY 2009 request = \$60,269.9
 - GF = \$36.0 (59%)
 - Federal = \$8.7 (15%)
 - Variety of sources = \$15.8 (26%)

FY 2010 Budget Request

Two Increments

Yukon River Subsistence = \$80.0

- Nenana test wheel video monitoring
- Fall chum salmon drift test fishery

BS/AI Crab Research = \$793.7

- King crab pot surveys
- Snow/Tanner crab biology
- Observer data entry

Major Issues

- Recruitment and Retention of Staff
- Declining Federal Funds
- Funding Instability
- Renegotiation of the Pacific Salmon Treaty
- Federal Subsistence Management
- Gulf of Alaska Groundfish Rationalization
- Federal Extraterritorial Jurisdiction
- Marine Stewardship Council Re-certification
- Cook Inlet Salmon Management
- Geoduck Aquatic Farm Industry Recommendations
- Water/Boating, Diving, Firearms and Bear Safety

