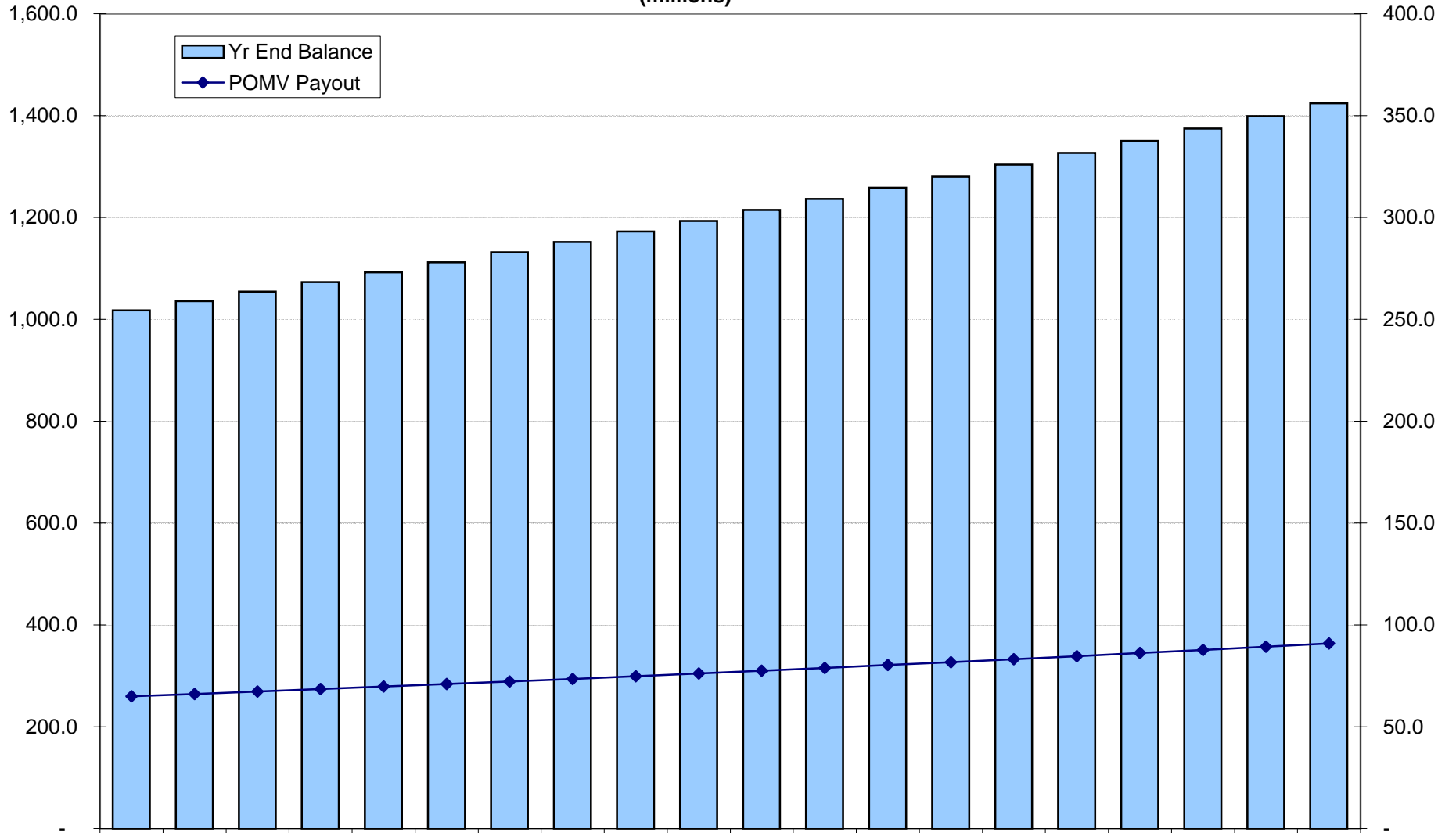


**Transportation Fund
Scenario - 8.28% IR; 6% POMV
(millions)**



Yr End Balance	1,017.8	1,036.0	1,054.5	1,073.3	1,092.4	1,111.9	1,131.7	1,151.9	1,172.4	1,193.3	1,214.6	1,236.3	1,258.3	1,280.8	1,303.6	1,326.8	1,350.5	1,374.6	1,399.1	1,424.0
POMV Payout	65.0	66.1	67.3	68.5	69.7	71.0	72.2	73.5	74.8	76.2	77.5	78.9	80.3	81.8	83.2	84.7	86.2	87.7	89.3	90.9