



Creating Circumpolar Connections and Strengthening the Alaska Food System



INSTITUTE OF AGRICULTURE,
NATURAL RESOURCES & EXTENSION

University of Alaska Fairbanks

Jodie Anderson
Director
12 February 2026

Notice of non-discrimination

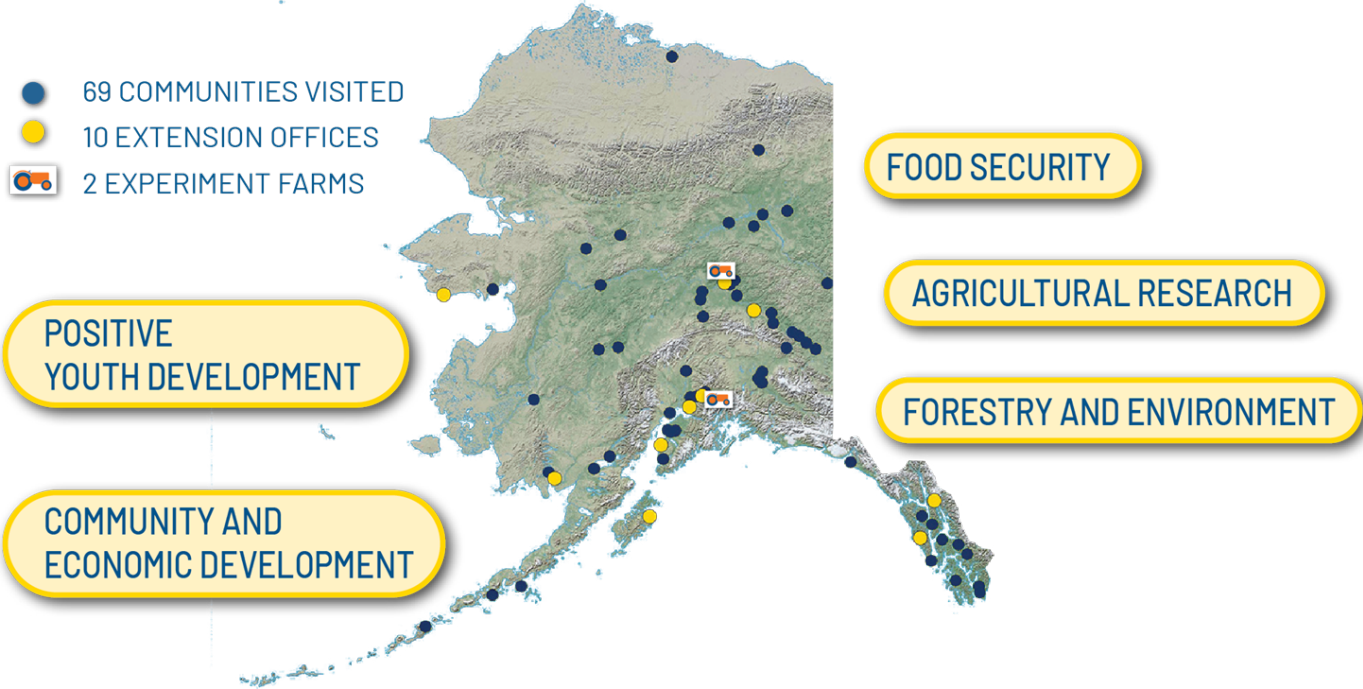
This work is supported by the U.S. Department of Agriculture's National Institute of Food and Agriculture. In accordance with Federal civil rights law and U.S. Department of Agriculture (USDA) civil rights regulations and policies, the USDA, its Agencies, offices, and employees, and institutions participating in or administering USDA programs are prohibited from discriminating based on race, color, national origin, religion, sex, disability, age, marital status, family/parental status, income derived from a public assistance program, political beliefs, or reprisal or retaliation for prior civil rights activity, in any program or activity conducted or funded by USDA (not all bases apply to all programs). Remedies and complaint filing deadlines vary by program or incident.

Persons with disabilities who require alternative means of communication for program information (e.g., Braille, large print, audiotape, American Sign Language, etc.) should contact the responsible Agency or USDA's TARGET Center at (202) 720-2600 (voice and TTY) or contact USDA through the Federal Relay Service at (800) 877-8339. Additionally, program information may be made available in languages other than English.

To file a program discrimination complaint, complete the USDA Program Discrimination Complaint Form, AD-3027, found online at [How to File a Program Discrimination Complaint](#) and at any USDA office or write a letter addressed to USDA and provide in the letter all of the information requested in the form. To request a copy of the complaint form, call (866) 632-9992. Submit your completed form or letter to USDA by: (1) mail: U.S. Department of Agriculture, Office of the Assistant Secretary for Civil Rights, 1400 Independence Avenue, SW, Washington, D.C. 20250-9410; (2) fax: (202) 690-7442; or (3) email: program.intake@usda.gov. USDA is an equal opportunity provider, employer, and lender.

The University of Alaska (<http://www.alaska.edu/alaska>) is an equal opportunity/equal access employer and educational institution. The university is committed to a policy of nondiscrimination (<http://www.alaska.edu/nondiscrimination>) against individuals on the basis of any legally protected status.

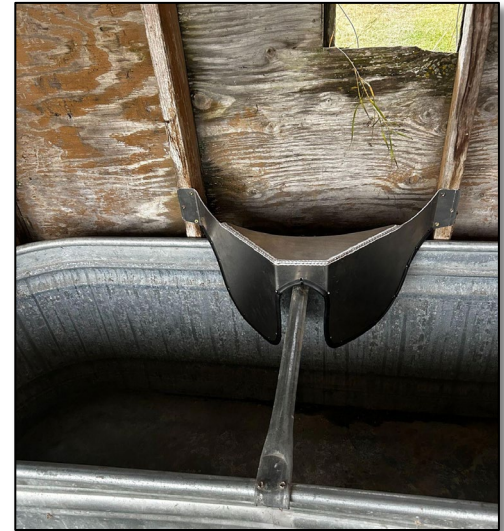
UAF Institute of Agriculture, Natural Resources and Extension



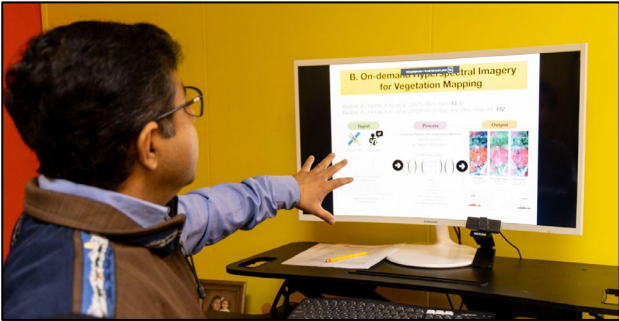
\$2M Funding FY26: Small Grains Field Research



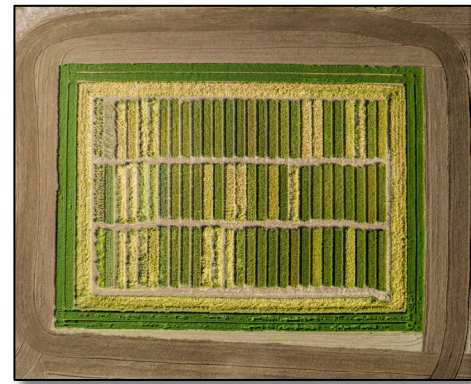
\$2M Funding FY26: Livestock Nutrition Research



Current Research: Forestry



Current Research: Agriculture



12th Circumpolar Agriculture Conference

Tromsø, Norway



Circumpolar
Agricultural
Association

Participants from:

- Canada
- Denmark
- Faroe Islands
- Finland
- Greenland
- Iceland
- Norway
- Scotland
- Sweden
- United States



Photo credit: NIBIO



Conventional/traditional breeding and selection approaches

- **4 to 5 yrs** to develop genetically uniform purebred lines

Doubled Haploid (DH) approach

- **1 yr** to develop genetically uniform purebred lines

We're developing DH lines from anther!*



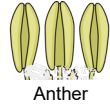
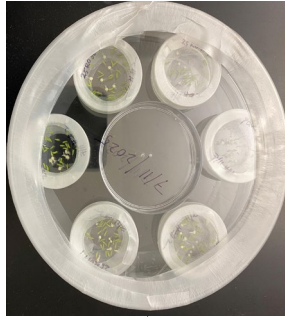
Hybrid wheat plant as anther donor for DH development



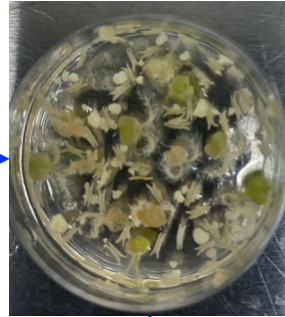
Isolate wheat spike in aseptic condition



Wheat anther in nutrient media



Anther



Wheat anther-derived embryos



Wheat /haploid/diploid plantlets



Wheat Double Haploid (DH) plant



13th CAC 29-31 August 2028

March 3

Jan Dawe, assistant professor of natural resource education and community engagement

March 31

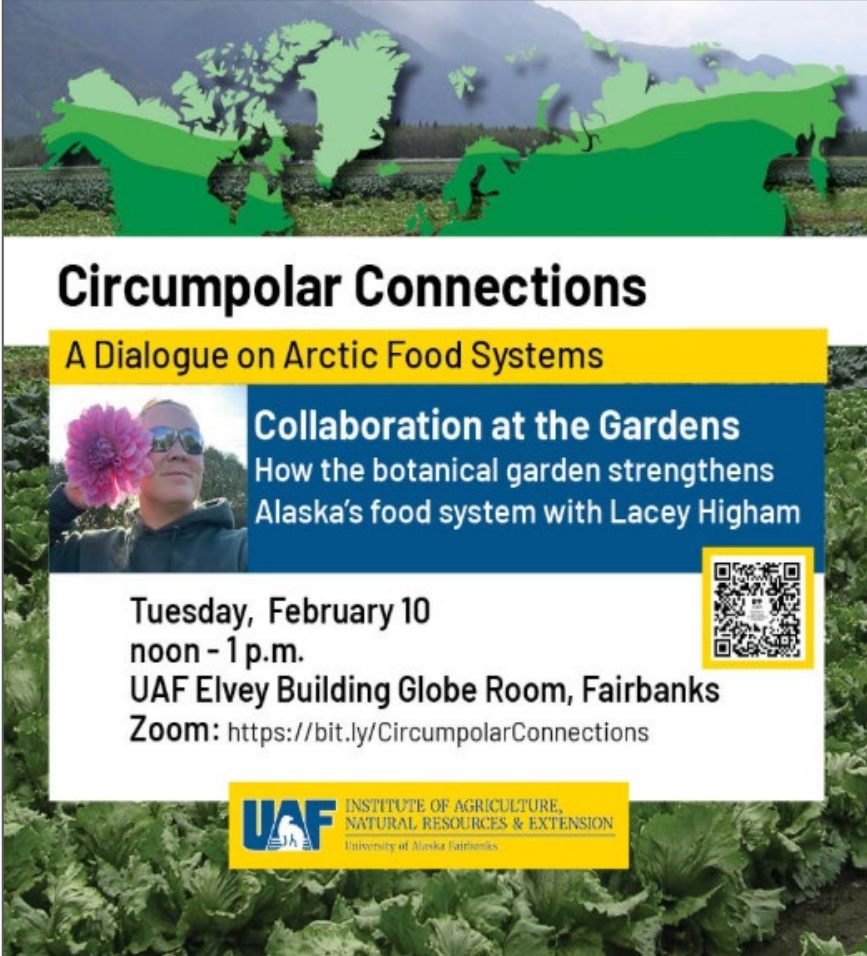
Jessie Young-Robertson, research associate professor of forest ecology

April 14

Caley Gasch, research assistant professor of soil science

April 28


Jim Vinyard, research assistant professor of livestock nutrition and **Melissa Good**, mariculture specialist



Circumpolar Connections
A Dialogue on Arctic Food Systems

Collaboration at the Gardens
How the botanical garden strengthens Alaska's food system with Lacey Higham

Tuesday, February 10
noon - 1 p.m.
UAF Elvey Building Globe Room, Fairbanks
Zoom: <https://bit.ly/CircumpolarConnections>



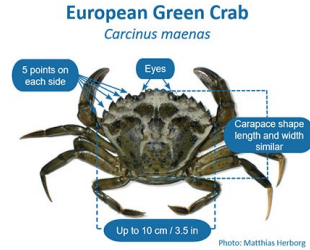
UAF INSTITUTE OF AGRICULTURE,
NATURAL RESOURCES & EXTENSION
University of Alaska Fairbanks



Circumpolar
Agricultural
Association



Our funding request for FY27



COOPERATIVE
EXTENSION
SERVICE





Photo credit: Sacha Layos

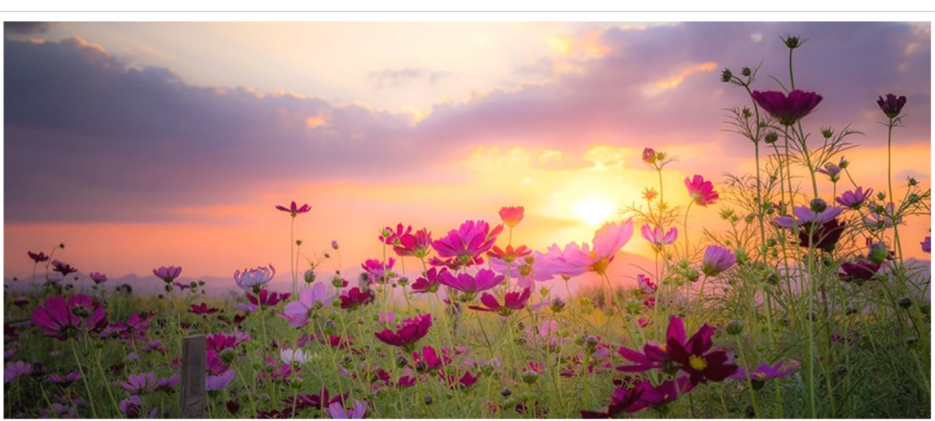


Photo credit: Chelsea San Roman



Thank you
Jodie Anderson
jmanderson@alaska.edu