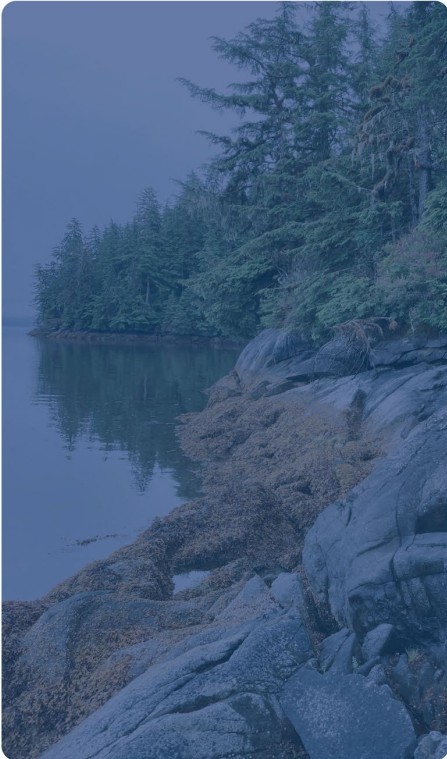


# House Finance Committee

February 10, 2026



**Trust**  
Alaska Mental Health  
Trust Authority



# Board of Trustees

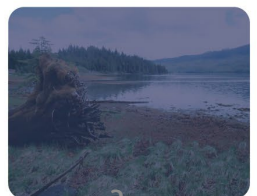
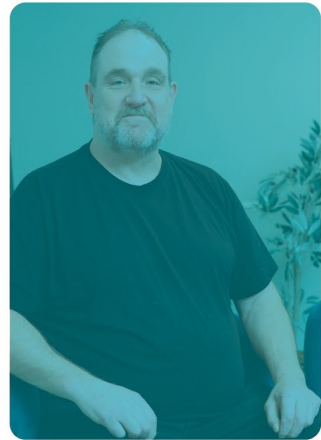
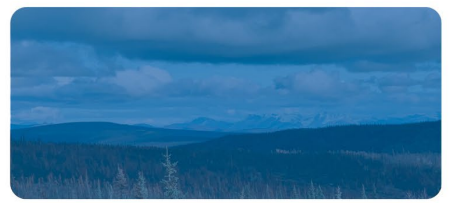
- Brent Fisher, *Chair*
- Corri Feige, *Vice Chair, Resource Management Committee Chair*
- Anita Halterman, *Secretary*
- Agnes Moran, *Program & Planning Committee Chair*
- Kevin Fimon, *Audit & Risk Committee Chair*
- John Morris, *Finance Committee Chair*
- Josie Hickel, *Trustee*



# Trust Beneficiaries

Trust beneficiaries include Alaskans who experience:

- Mental illnesses
- Intellectual and/or developmental disabilities
- Alzheimer’s disease and related dementia
- Traumatic brain injuries
- Substance use disorders





# About the Trust

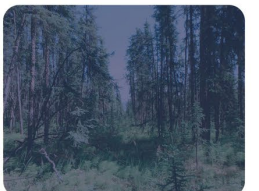
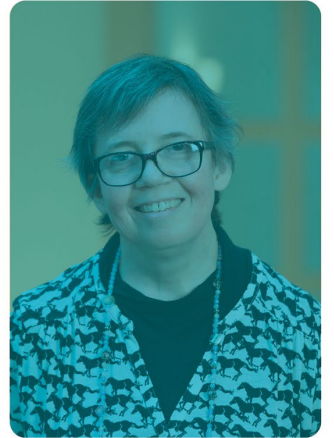
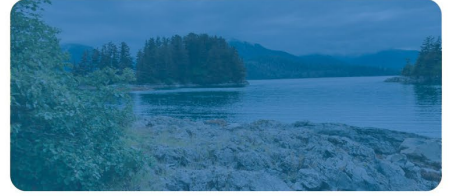
- Established in 1994 as a public corporation of the state within the Department of Revenue.
- Governed by a Board of Trustees; which employs a CEO and staff.
- Administers the Mental Health Trust, a perpetual trust.
- Works to improve lives of current and future Trust beneficiaries through ensuring an integrated, comprehensive mental health program in Alaska; approves a budget allocating Trust funds each fiscal year.
- Protects and enhances the value of Trust lands while generating revenues from them over time. The Trust Land Office is a special unit within DNR that is contracted to manage Trust lands and natural resources.
- Entirely self-funded.

# Trust Mission

The Alaska Mental Health Trust Authority and the Trust Land Office work together to improve the lives of Trust beneficiaries by strengthening Alaska's system of care, prudently managing Trust assets, and driving lasting, positive change across the state.

# Trust Vision

A future where every Alaskan supported by the Trust has care, connection, and the opportunity to thrive.







# Trust Finance Update

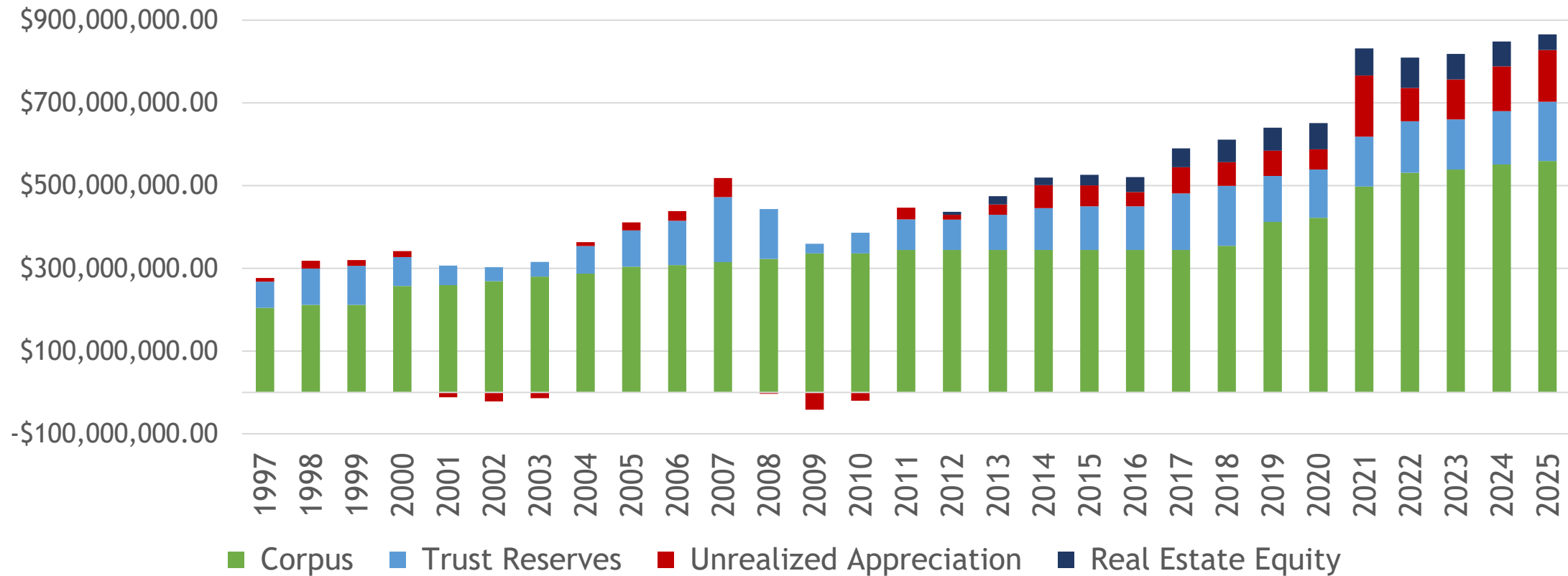


# Financial Position

Primary Trust Financial Assets (end of FY25)	
Mental Health Trust Fund	\$559,321,000
Trust Reserves	\$143,655,000
Unrealized Appreciation	\$125,053,000
Real Estate Investment Equity*	\$37,425,000
<b>Total</b>	<b>\$865,454,000</b>

\*2 of 6 CRE properties sold in FY25

## Trust Invested Assets



# Annual Expenditure

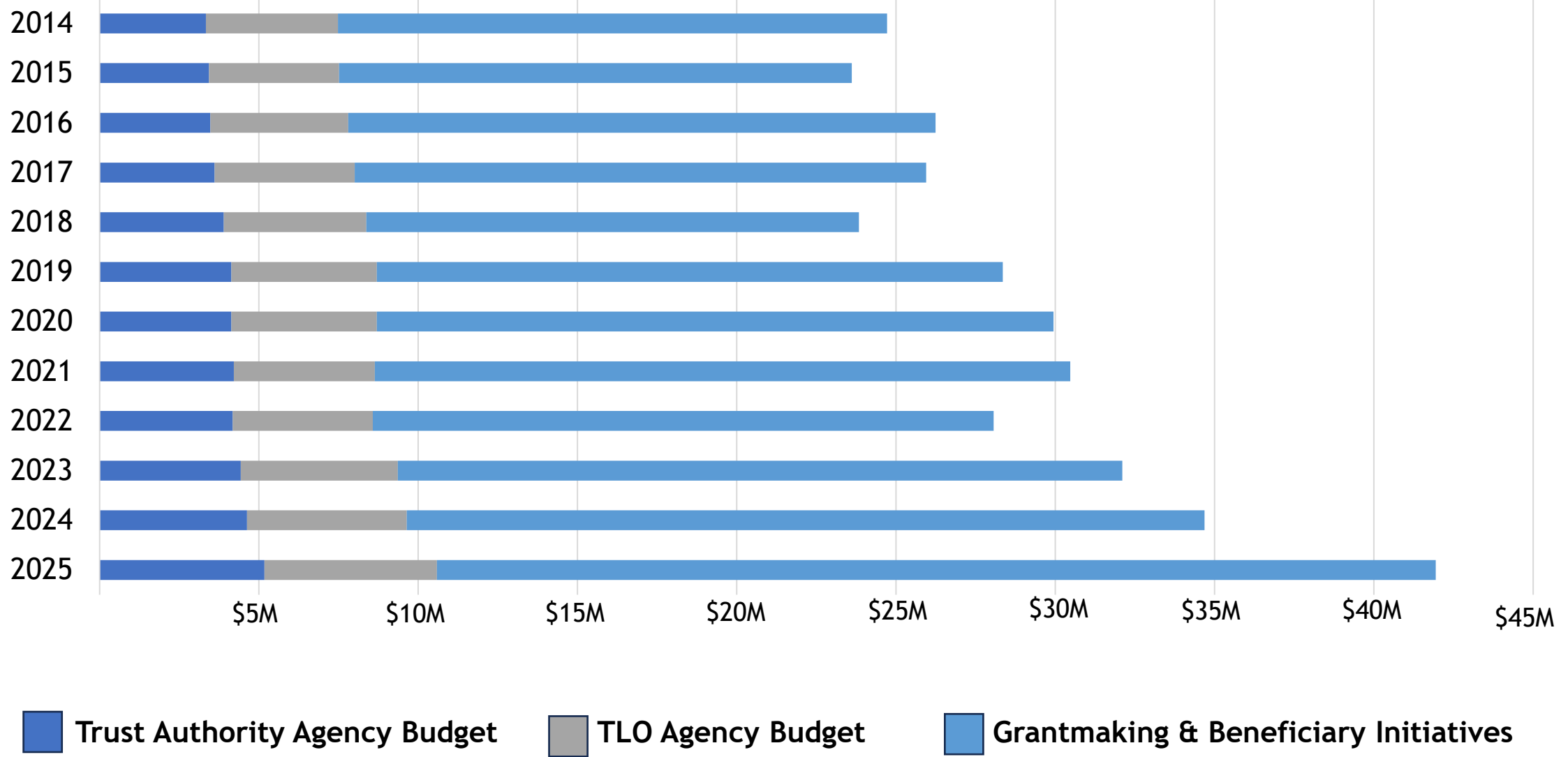
The annual expenditure amount for the Trust's budget is created by combining the following:

	Available Funding, FY27
Annual Trust withdrawal from invested assets (4.5%* of the four-year average value)	\$34,290,600
2-year average of spendable income generated from Trust Land Office activities	\$4,296,200
2-year average of prior year unexpended funds	\$4,496,200
Interest income earned on cash balance	\$2,440,000
	<b>Total \$45,523,000</b>

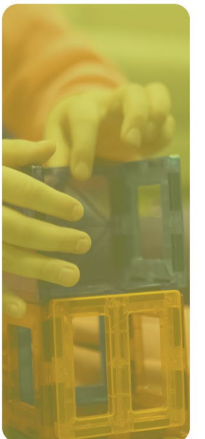
*\*In May 2025 Trustees approved an increase in the annual withdrawal from 4.25% to 4.5%. For FY27, that increase resulted in an additional \$1.9M in available funds.*

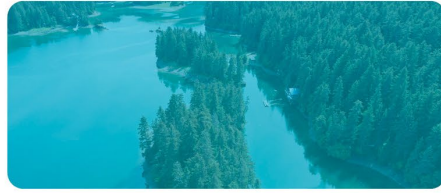


# Trustee Approved Spending

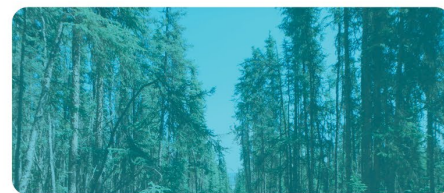
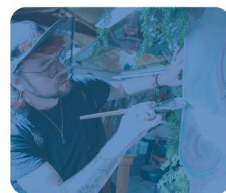


\*Effective FY25, the value of in-kind contributions through below market leases on Trust lands are reflected in Grantmaking and Beneficiary Initiatives. In FY25, those leases were valued at \$1,015,171.





# Trust Land Office



# Trust Land Office

- Land management conducted solely in the best interest of Trust and its beneficiaries
- Maximizes long-term revenue & productivity from Trust land
- Encourages diverse revenue-producing uses of Trust land
- Manages Trust land prudently, efficiently & with accountability to the Trust & its beneficiaries

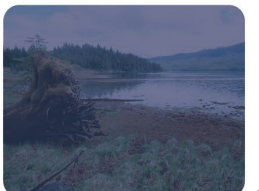
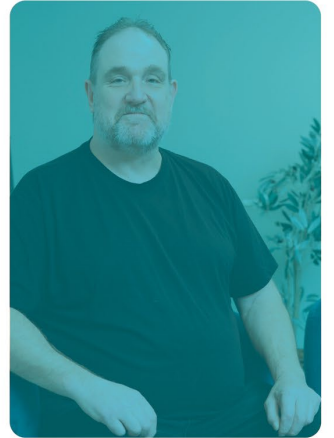
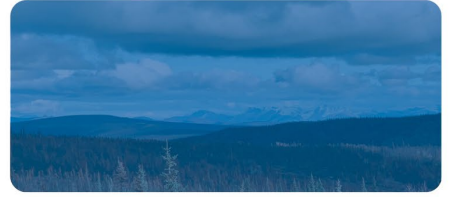


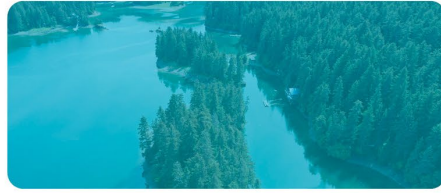
FY 26 Anticipated Trust Land Office Revenues	
Coal	\$312,400
Oil and Gas	\$367,100
Minerals	\$2,179,300
Materials	\$90,000
Timber	\$1,425,000
Lands	\$7,213,000
Real Estate	\$660,500
<b>Total</b>	<b>\$12,247,900</b>

*Trust lands support Trust beneficiaries*

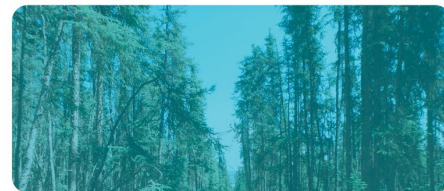
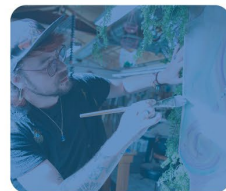
# Trust Land Office Highlights FY25

- Generated more than \$12M in revenue for the Trust, and the TLO's sale of two Commercial Real Estate properties resulted in \$21.2M in proceeds.
- Entered Memorandums of Understanding (MOUs) with three key local governments: the Ketchikan Gateway Borough, the City and Borough of Wrangell, and the Kenai Peninsula Borough.
- Financed land contracts and outright land purchases projected to deliver long-term revenue over the lifetime of the agreements.
- Advanced Icy Cape Project Gold and Heavy Minerals Project with an independent technical report including resource estimates. Additionally, the project has identified critical mineral potential.
- 14 subdivision projects underway in 10 communities to expand lands available for purchase.





# Trust FY27 Budget







# FY27 Spending



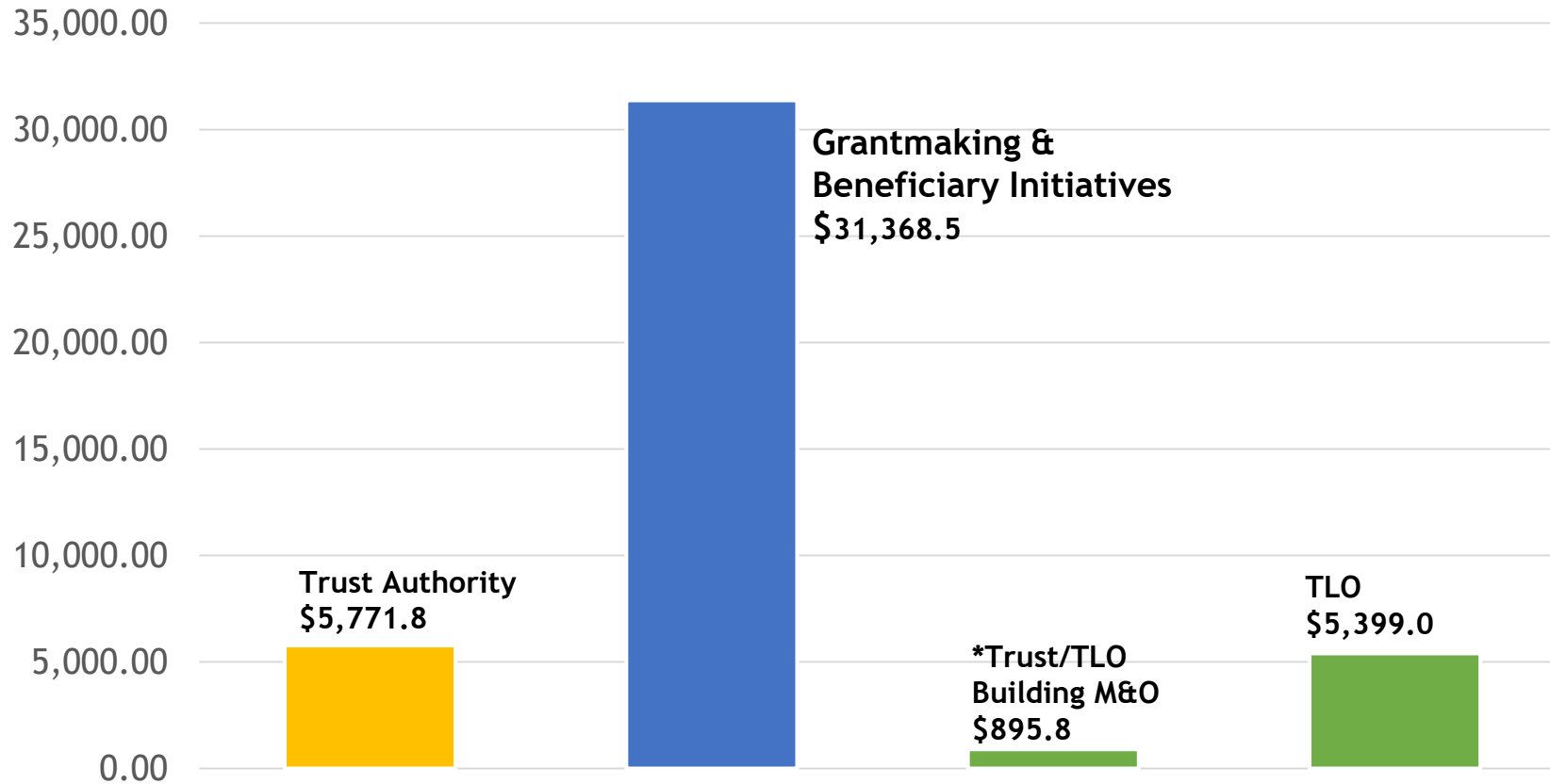
## Grantmaking

Designated grants to community providers, nonprofits, local governments and Tribal organizations, as well as designated grants to state agencies

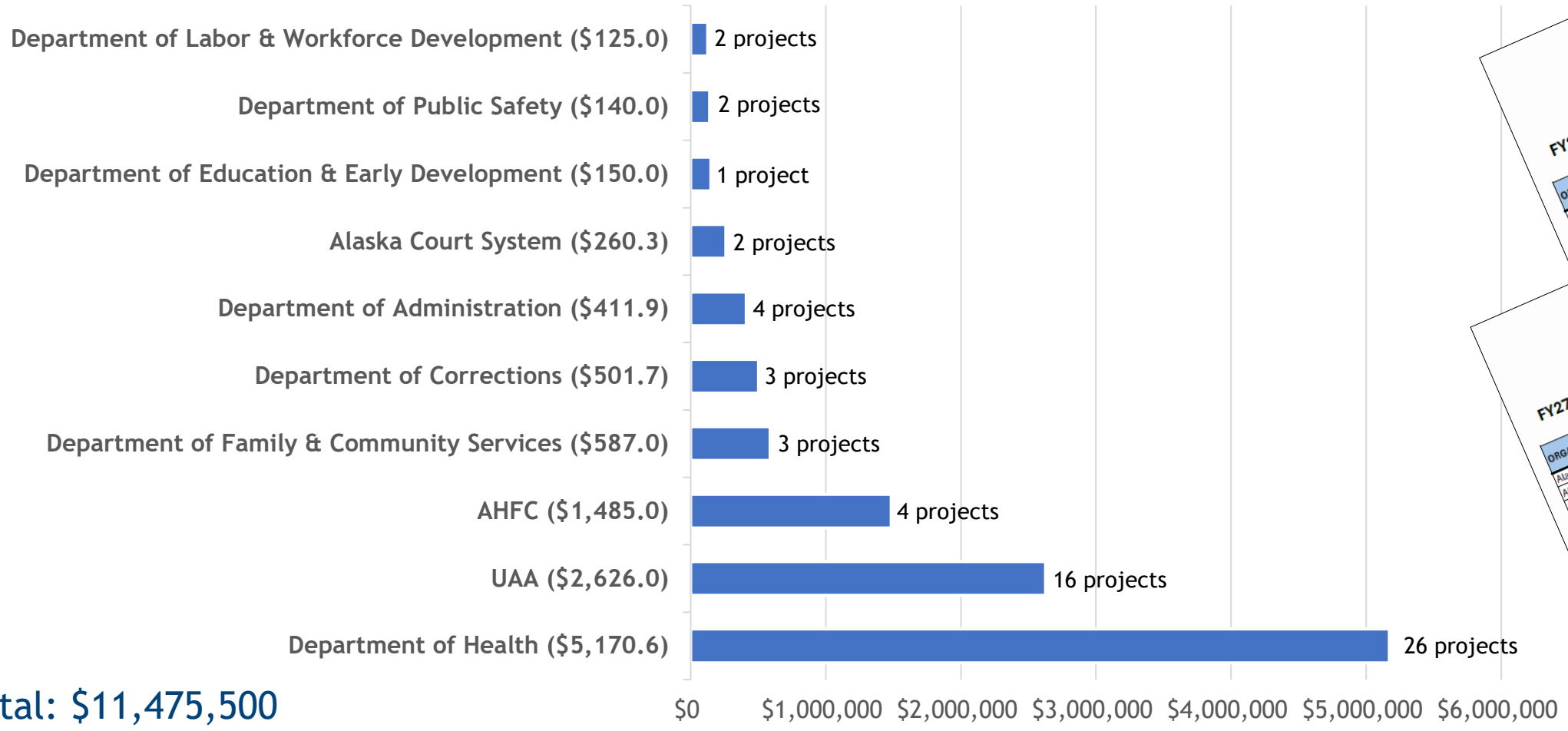
## Agency Budgets

- Trust Authority
- Trust Land Office (TLO)
  - \*Trust and TLO Building M&O – newly reflected in the Trust budget, added in FY27 at request of Legislature

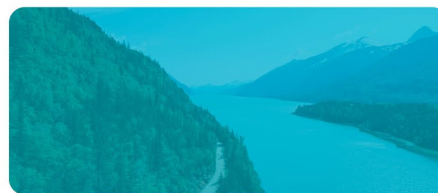
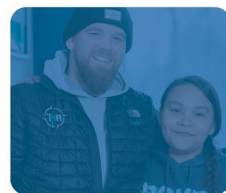
**FY27 Trustee-Approved Budget: \$43.4M**



# MHTAAR Grants, FY27



Total: \$11,475,500



**Trust Alaska Mental Health Trust Authority**

**FY27 Mental Health Trust Authority Authorized Receipt**

ORGANIZATION NAME	PROJECT TITLE
Department of Health, Division of Public Health	Dementia Education & Prevention
Department of Health, Division of Public Health	Early Childhood Intervention P

**Trust Alaska Mental Health Trust Authority**

**FY27 Mental Health Trust Authority Authorized Receipt**

ORGANIZATION NAME	PROJECT TITLE
Alaska Housing Finance Corporation	Discharge Incentive Grants
Alaska Housing Finance Corporation	Special Needs Housing Grant - Ketchikan
Alaska Housing Finance Corporation	Rural Housing Coordinator - Ketchikan
Alaska Housing Finance Corporation	Homeless Assistance Program - Cap
<b>Alaska Housing Finance Corporation Total</b>	
Alaska Court System	Centralized Health Administrat
Alaska Court System	Behavioral Health Administrat
<b>Alaska Court System Total</b>	
Department of Education & Early Development	Trauma Engaged Schools
<b>Department of Education &amp; Early Development Total</b>	
Department of Corrections	Trauma Treatment f
Department of Corrections	Addressing Comor
Department of Corrections	Severe and Persi
Department of Corrections	APIC (Assess
<b>Department of Corrections Total</b>	
Department of Health, Division of Behavioral Health	Behavioral Health
Department of Health, Division of Behavioral Health	Crisi
Department of Health, Division of Behavioral Health	Behavioral Health
Department of Health, Division of Behavioral Health	Behavioral Health
Department of Health, Division of Behavioral Health	Behavioral Health
Department of Health, Division of Behavioral Health	Behavioral Health
Department of Health, Division of Behavioral Health	Behavioral Health
Department of Health, Division of Behavioral Health	Behavioral Health
Department of Health, Division of Behavioral Health	Behavioral Health
Department of Health, Division of Behavioral Health	Behavioral Health
Department of Health, Division of Behavioral Health	Behavioral Health



# More on MHTAAR Grants

- 
- 
- Approved by the board of trustees
  - Administered through the State budget process
  - Developed in partnership with state agency leadership
  - Enhance the capacity of SOA partners to advance system change initiatives
  - MHTAAR projects typically developed with anticipated timeline
  - Trust MHTAAR projects range in longevity, ranging from new in FY27 to 20+years

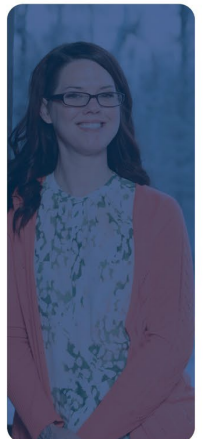
**\$260M+**  
in MHTAAR grants  
have been  
awarded to State  
agencies since  
inception.

# Trustee FY27 GF/MH Recommendations

Operating Budget Items, FY27		Trustee Approved Recommendations		Governor's Proposed Budget			Notes
Project	GF/MH	Associated MHTAAR	GF/MH	Associated MHTAAR	GF/MH Difference		
Crisis Call Center (DOH)	\$500.00	\$1,000.00	\$ -	\$1,000.00	(\$500.00)		
<i>Subtotal</i>	<i>\$500.00</i>	<i>\$1,000.00</i>	<i>\$ -</i>	<i>\$1,000.00</i>			
Capital Budget Items, FY27		Trustee Approved Recommendations		Governor's Proposed Budget			Notes
Project	GF/MH	Associated MHTAAR	GF/MH	Associated MHTAAR			
Coordinated Community Transportation (DOTPF)	\$700.00	\$ -	\$700.00	\$ -			
Special Needs Housing Grant (DOR)	\$1,750.00	\$200.00	\$ -	\$200.00	(\$1,750.00)	Budget includes \$1,750 in AHFC Dividends	
Homeless Assistance Program (DOR)	\$2,850.00	\$950.00	\$ -	\$950.00	(\$2,850.00)	Budget includes \$4,050 in AHFC Dividends	
Home Modifications & Upgrades (DOH)	\$1,150.00	\$ -	\$1,150.00	\$ -			
<i>Subtotal</i>	<i>\$6,450.00</i>	<i>\$1,150.00</i>	<i>\$1,850.00</i>	<i>\$1,150.00</i>			
<b>TOTAL</b>	<b>\$6,950.00</b>	<b>\$2,150.00</b>	<b>\$1,850.00</b>	<b>\$2,150.00</b>	<b>(\$5,100.00)</b>		

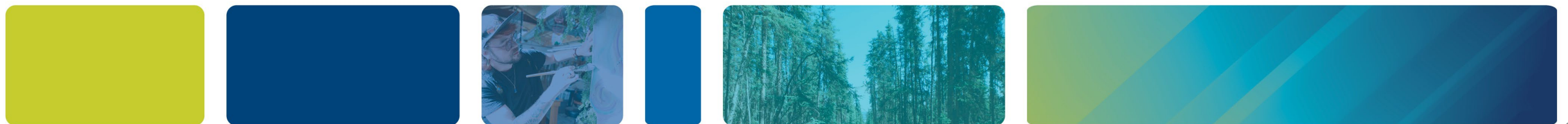
\*\*Chart does not show all Trust FY27 MHTAAR funding

\*\*Chart does not show Trust grant funding to non-SOA partners





# Trust Authority Grants and Programs





# The Trust Strategic Plan, 2025

## Trust Priorities

The Trust's four Priorities describe where the Trust directs its investments to strengthen Alaska's system of care. Each Priority helps align the Trust's grantmaking and partnerships to improve the lives of beneficiaries and the systems they rely on.

- Prevention & Early Intervention
- Crisis Response
- Treatment & Recovery
- Ongoing Support and Wellbeing

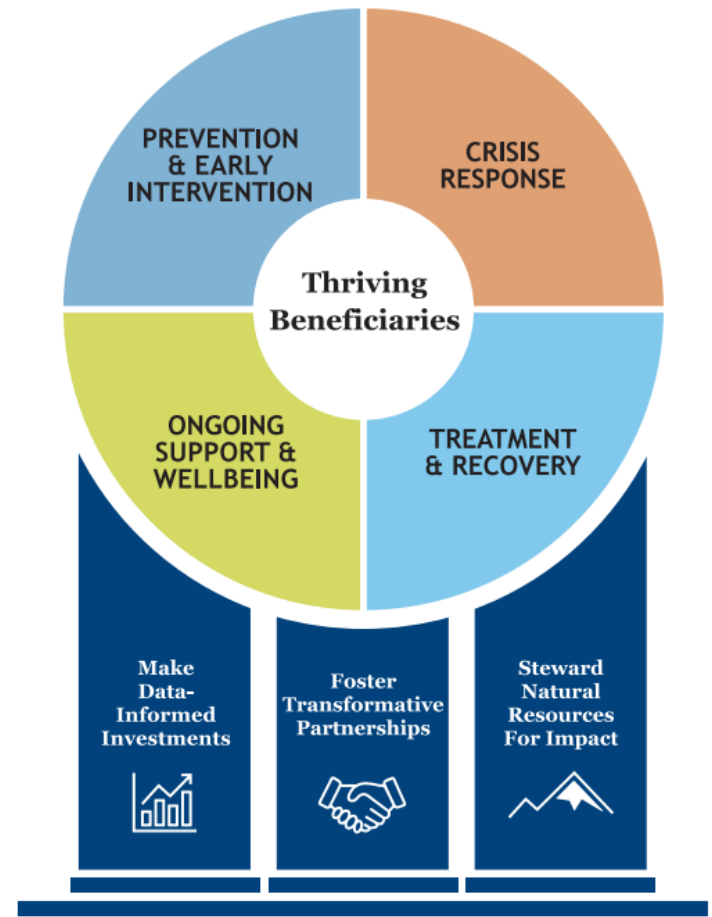
## Trust Core Commitments

The Trust's three Core Commitments define how the Trust fulfills its mission.

1. Make Data-Informed Investments
2. Foster Transformative Partnerships
3. Steward Natural Resources for Impact

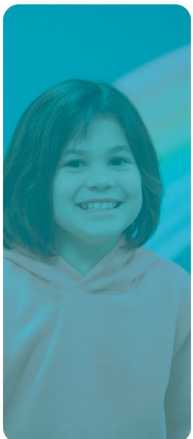
### Priorities

Where the Trust directs its focus



### Core Commitments

How the Trust fulfills its mission



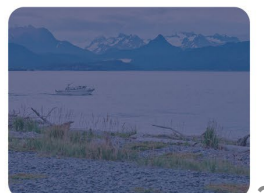
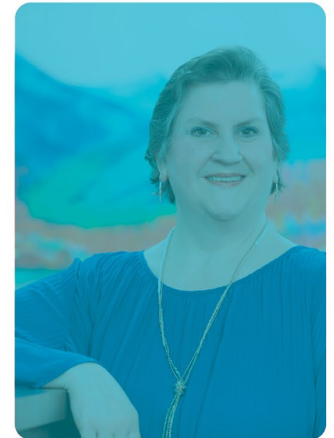
# Types of Trust Grants Investments

**MHTAAR Grants:** Grants to State Agencies  
(discussed on prior slides)

**Trust Grantmaking:** Trust funds awarded directly to nonprofits, local governments, Tribal organizations, service providers and other beneficiary-serving partners.

- *Innovative Solutions/Pilots*
- *Capacity Building*
- *Equipment*
- *Capital - Construction*

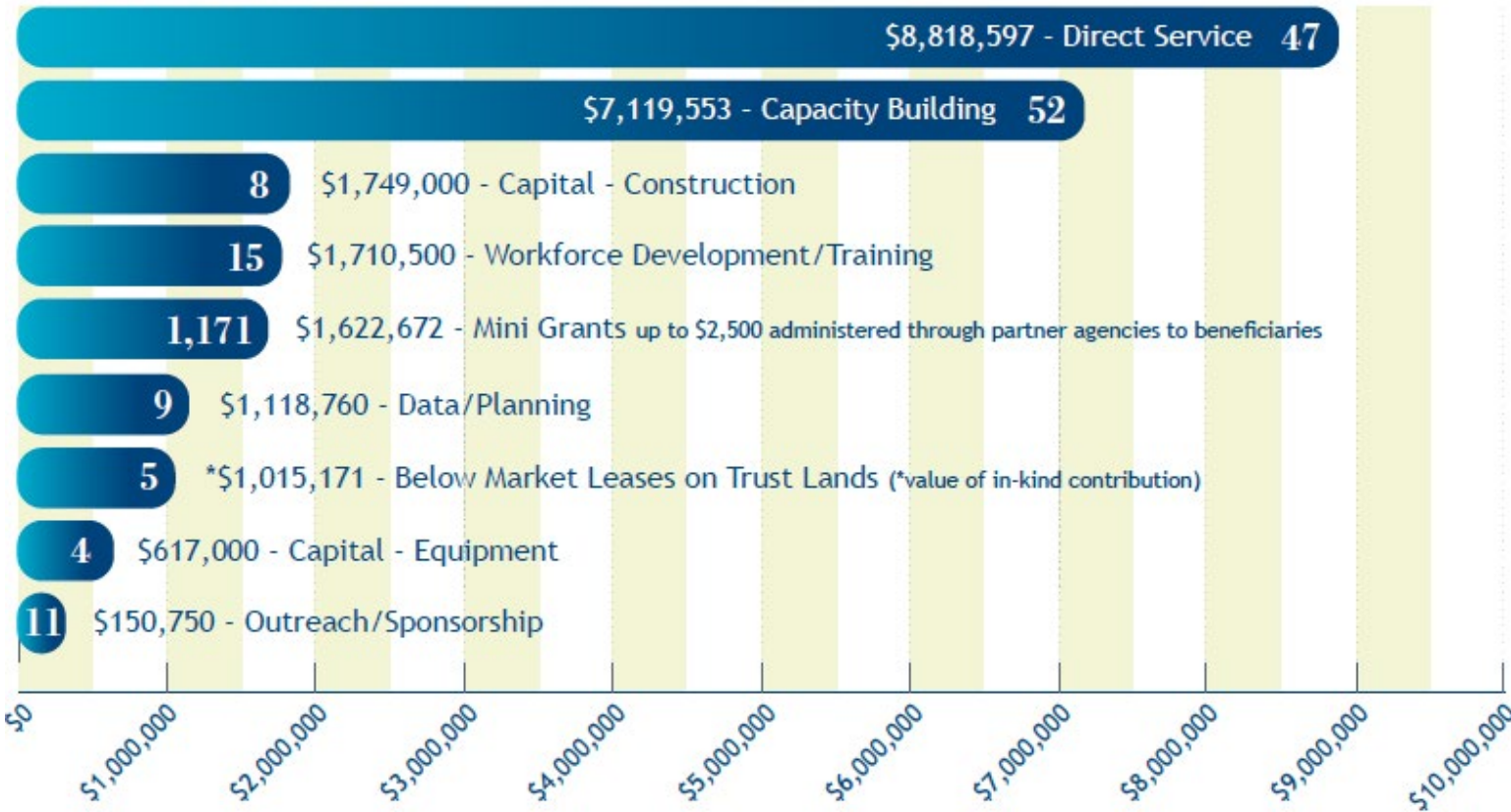
**Mini Grants:** awarded through a partner agency, mini grants up to \$2,500 per award can be used for equipment, supplies, or services to improve beneficiary quality of life and increase independent functioning.



# Trust Grant Impacts, FY25

(data represents both MHTAAR and Grants directly to partner agencies)

## 2025 Grants



**201 trainings**  
for beneficiary  
serving professionals

were offered through Trust-supported  
programs within the UAA College of Health.



**5,494 individuals**  
were trained

(representing **103** communities)

**4,912**



**families**  
that have  
received early  
intervention,  
education,  
support,  
or services  
through Trust  
supported  
programs



**6,074 individuals**

received homelessness prevention, emergency  
shelter, rapid rehousing or related services  
through the Trust-supported Basic Housing  
Assistance Program (BHAP) administered  
by the Alaska Housing Finance Corporation.

**9,500**



**mobile crisis team  
(MCT) responses**

to individuals in a behavioral health  
crisis. These teams, operating in  
Fairbanks, Mat-Su, Anchorage, Juneau,  
and Ketchikan, were able to *resolve*  
84% of crises in the community.

**1,957**

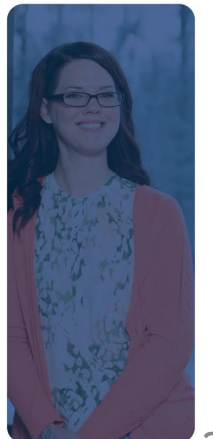


**individuals**  
served through  
Trust-funded peer  
led agencies



# FY25 Trust Grant Highlights

- Set Free Alaska, Capital support for a therapeutic campus expansion project in the Mat-Su Valley, **\$250,000**
- Southcentral Foundation, Traumatic and Acquired Brain Injury (TABI) screening, assessment, and treatment project equipping staff at ANMC/SCF to develop and implement a comprehensive system of brain injury care, **\$500,000 in FY25 (\$1.3M over 4 years)**
- Volunteers of America, Alaska, Organizational support for the first detox and withdrawal management facility for adolescents in Alaska, **\$325,000**
- A2P2 Help Me Grow, supported a centralized intake and referral system for pediatric behavioral treatment coordination, serves 20 boroughs, **\$150,000**
- Residential Youth Care, Inc. Capital support for the renovation of the SeaLevel Community Youth Center in Ketchikan, which will offer services including behavioral health, **\$400,000**
- The Tundra Women's Coalition, support to provide transitional housing to at-risk youth ages 18-24 in Bethel, **\$50,000**
- Tanana Chiefs Conference, Below Market lease for TCC's adult behavioral health treatment facility, **FY25 in-kind grant value: \$287,088**













# Other Work of the Trust



In addition to grantmaking, the Trust also engages in:

- 
- 
- 
- Leadership in implementing system change initiatives
  - Planning and evaluation
  - Technical assistance and grantwriting support for partners
  - Beneficiary advocacy/education
  - De-stigmatization of beneficiary conditions
- 
- 
- 

Trust investment  
in grantwriting  
resources for  
partners  
generated  
**\$45M**  
in new grant  
funding for Alaska  
from FY23 to FY25



# Crisis Now Community Implementation

## 2025 Statewide Impact

**5** Crisis stabilization planning projects supported:

- Southcentral Foundation: anticipated launch in 2026
- Providence Crisis Stabilization: anticipated launch in 2026
- Maniilaq Association: anticipated launch in 2027
- Alaska Behavioral Health: anticipated launch TBD
- Unalaska: anticipated launch TBD

### MCT Responses and Percent Resolved in Community

Anchorage	6,277	86%
Fairbanks	1,319	98%
Juneau (Jan-Aug '25)	210	82%
Kenai Peninsula (started Dec '25)	35	80%
Mat-Su (2024)	506	80%

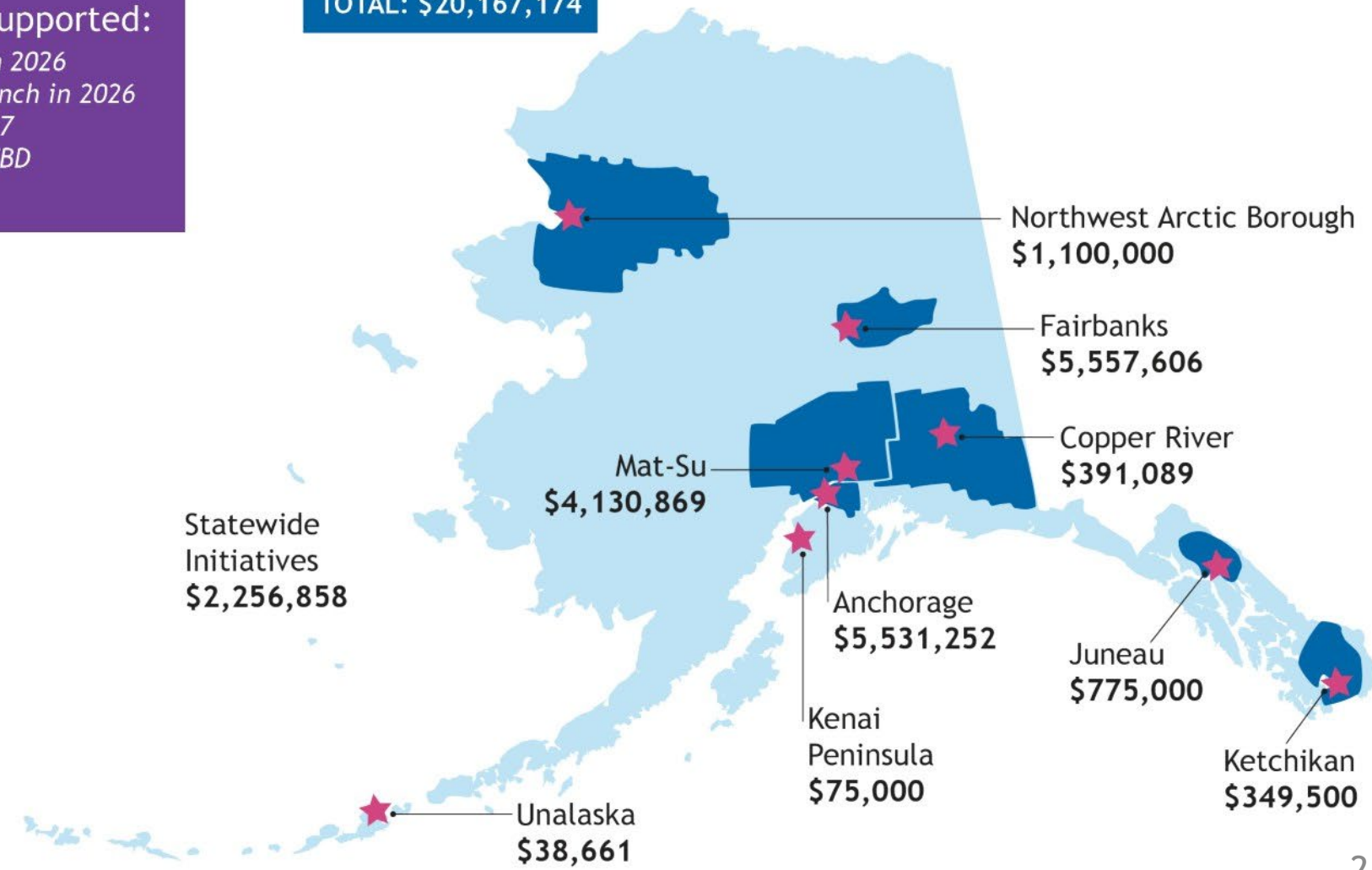
### MIH Responses

Juneau (Jan-Aug '25)	1,355
Ketchikan (Jun '24-Jul '25)	1,000

**47,809** Calls answered by Alaska's Crisis Call Center

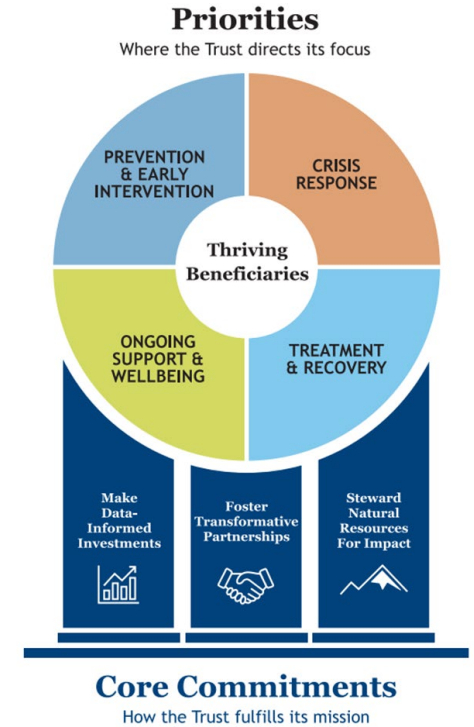
## Investment by Region, Calendar Years 2021–2025

TOTAL: \$20,167,174



# Looking Ahead

- Trust Strategic Plan operationalization
- Trust Improving Lives Conference, September 17-18, 2026
- Rural Health Transformation Program



**Trust**  
Alaska Mental Health  
Trust Authority

## Improving Lives

*The Alaska Mental Health Trust Authority Conference*

**September 17 and 18, 2026**

8:30 AM – 5:30 PM  
Dena'ina Civic and Convention Center  
Anchorage, Alaska

**Mark your calendars!**





# Thank You

## Questions?

# Trust

Alaska Mental Health  
Trust Authority

**DONNA**  
Community Partner

“If we can head off disabilities at an early age and support kiddos and their families, it’s a much better deal than waiting until kids are older before providing intervention services.”



Trust  
Alaska Mental Health  
Trust Authority

**JAY**  
Trust beneficiary

“Mental Health Trust funding has helped me in so many ways, but the most significant is that it has broken me free from the chains of addiction. I’m free to be the person I always wanted to be.”



Trust  
Alaska Mental Health  
Trust Authority

**ALLIE**  
Trust Beneficiary

“I think I’m going to be an amazing makeup artist someday; it’s my dream. It makes me feel very creative.”



Trust  
Alaska Mental Health  
Trust Authority

[alaskamentalthrust.org](http://alaskamentalthrust.org)