



House Finance Committee

Domestic Violence & Sexual Assault Initiative Update

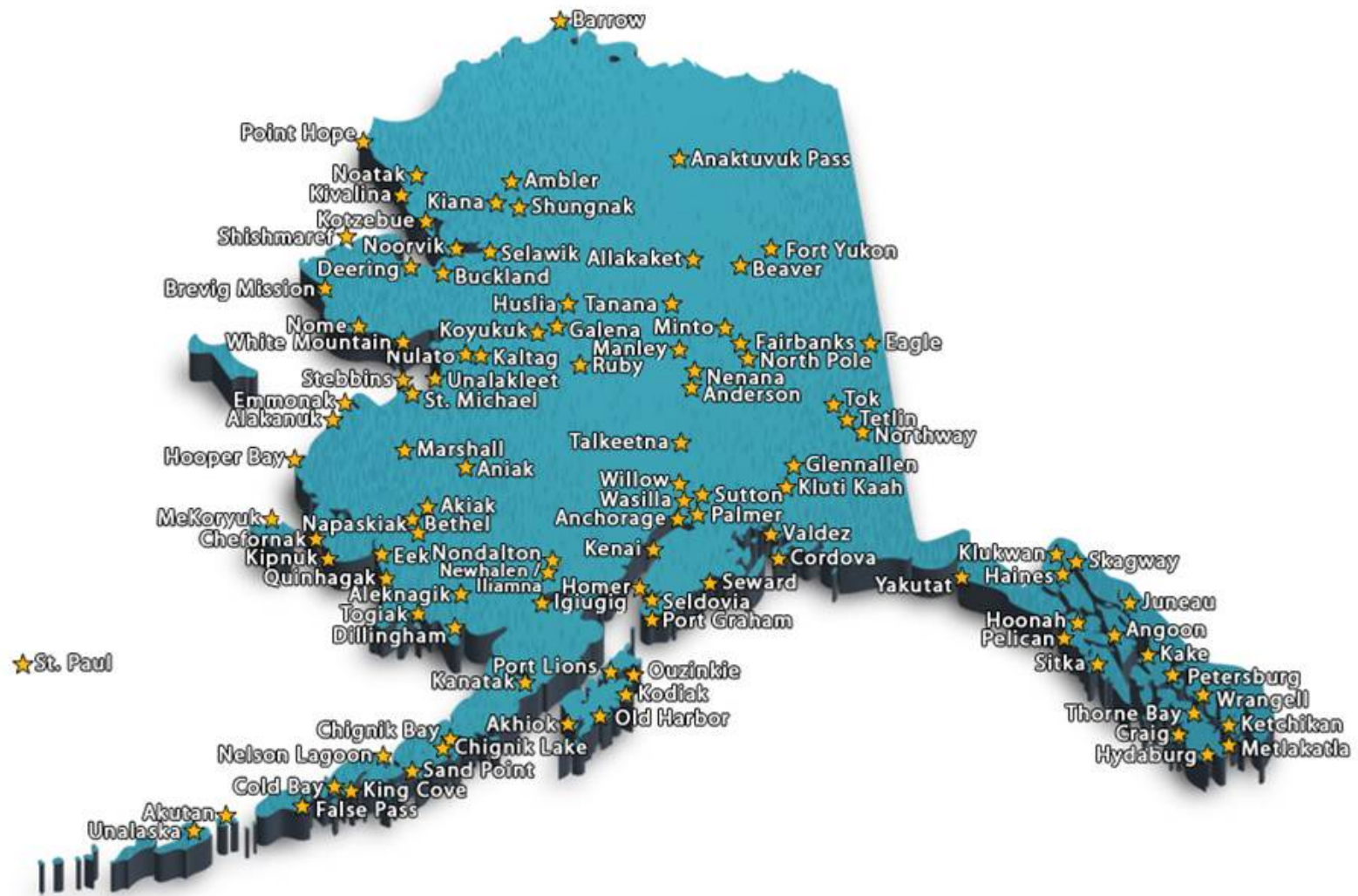
February 23, 2012

Be courageous: Prevent, Protect, Enforce, and Heal. ChooseRespect.Alaska.gov

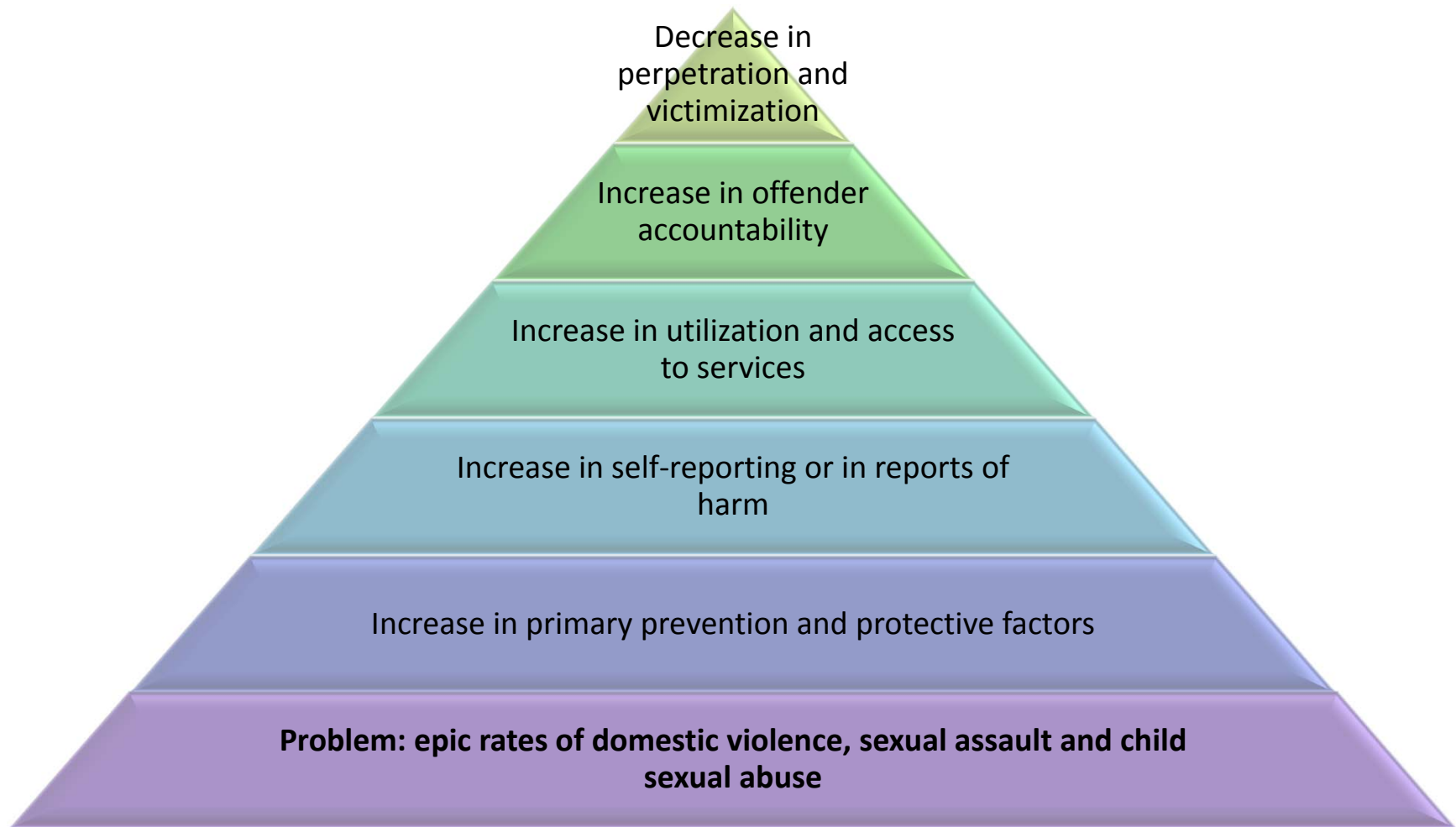
Overview

- The mission is **to end the epidemic of domestic violence and sexual assault in ten years**
- History
 - Recognition of the magnitude of the problem
 - Issues that impact every Alaskan
 - Acceptance and ownership of the issue by the Administration and communities
- All departments working together towards a common goal
- Starting point: breaking the silence and community engagement

March 29, 2012 Participating Communities



Mission: End the Epidemic



Overview

- To truly turn the curve and reduce the upward trend, we must change the social norms that promote and condone violence within our families and our communities
- As the stigma of reporting lessens and as we increase victim safety, those experiencing violence will be more likely to report and seek help
- We must continually find a balance between primary prevention and secondary and tertiary prevention. In all of our efforts, we must always consider the safety and well-being of victims
- Domestic violence and sexual violence are not solely public safety issues; they are public health issues, human rights issues, spiritual issues, and community issues

Overview

- Guiding principals which are the foundation of the initiative:
 - A culture of responsibility
 - Community ownership over solutions
 - Partnerships
 - Culturally tailored programs
 - Youth leadership in development and executing programs
 - Support programs with proven effectiveness
 - Use metrics to measure success

Key Priority Areas

	FY 2011	FY 2012	FY 2013
1. Prevention and Intervention	\$3,200.0	\$3,622.5	\$3,355.0
2. Support for Survivors	\$706.9	\$878.2	\$3,225.5
3. Law Enforcement	\$3,776.3	\$5,337.7	\$5,408.8
<hr/>			
TOTAL	\$7,683.2	\$9,838.4	\$11,989.3



Lifetime Estimates: Victimization Survey



**Percent of adult women who experienced
intimate partner violence**

Sample	Intimate Partner Violence	Sexual Violence
Statewide (FY10)	47.6%	37.1%
Anchorage (FY11)	42.2%	29.6%
Fairbanks (FY11)	49.5%	31.4%
Juneau (FY11)	47.1%	35.3%
Bristol Bay (FY11)	44.2%	31.2%





2012 Alaska Dashboard



Key Population Indicators for Alaska	Previous AK Data	Current AK Data	Percent Change	Progress
Childhood Exposure to Domestic Violence				
1. Percent of adults exposed to intimate partner violence of parent (BAPSS)	19.1%	19.2%	+1%	●
2. Percent of mothers whose 3 year old child saw violence or physical abuse (CUBS)	4.0%	7.2%	+80%	●
Child and Youth Victimization				
3. Percent of students experiencing physical dating violence in past year (YRBS)	13.3%	12.0%	-10%	●
4. Percent of students experiencing sexual violence in lifetime (YRBS)	10.1%	9.2%	-9%	●
Reports of Harm (Child and Youth)				
5. Rate of reported child abuse and neglect per 10,000 (US DHSO)	190.1	150.8	-21%	●
6. Rate of reported child sexual maltreatment per 10,000 (OCS)	5.8	6.5	+12%	●
Adult and Elder Victimization				
7. Percent of women experiencing physical intimate partner violence in past year (AVS)	N/A	9.4%	N/A	●
8. Percent of women experiencing sexual violence in past year (AVS)	N/A	4.3%	N/A	●
9. Percent of pregnant women experiencing intimate partner physical abuse (PRAMS)	3.6%	4.0%	+11%	●
Reports of Harm (Adult and Elder)				
10. Number of vulnerable adults reporting abuse or neglect (APS)	176	160	-9%	●
11. Number of vulnerable elders reporting abuse or neglect (APS)	73	75	+4%	●
Primary Prevention and Protective Factors				
12. Percent of pregnant women whose health provider talked to them about DV (PRAMS)	60.0%	61.3%	+2%	●
13. Percent of students comfortable seeking help from 3 or more adults (YRBS)	44.6%	43.8%	-2%	●
14. Percent of schools implementing Fourth R healthy relationship curriculum (DEED)	9.7%	12.5%	+29%	●
Reports to Law Enforcement				
15. Rate of forcible rape reported to law enforcement per 10,000 (UCR)	7.3	7.5	+3%	●
16. Number of domestic violence related homicides reported to law enforcement (DPS)	5	15	+200%	●
17. Number of elderly victims reporting DV-related sexual/physical assaults to ADT (DPS)	176	149	-15%	●
Utilization of Services				
18. Rate of children evaluated by child advocacy centers per 10,000 (ACA)	81.9	94.8	+16%	●
19. Rate of adults utilizing services for domestic violence per 10,000 (CDVSA)	84.2	89.7	+7%	●
20. Rate of children with adults in domestic violence services per 10,000 (CDVSA)	74.0	74.4	+1%	●
21. Rate of adults utilizing services for sexual assault per 10,000 (CDVSA)	21.5	21.5	+0%	●
22. Rate of youth utilizing services for domestic violence per 10,000 (CDVSA)	22.5	17.9	-20%	●
23. Rate of youth utilizing services for sexual assault per 10,000 (CDVSA)	43.3	31.4	-27%	●
Community Accountability				
24. Percent of reported forcible rapes resulting in an arrest (DPS)	24.3%	21.0%	-14%	●
25. Rate of juveniles referred for sex offenses per 10,000 (DJJ)	10.9	13.8	+27%	●
26. Rate of juveniles referred for a DV-related assault per 10,000 (DJJ)	N/A	38.5	N/A	●
27. Number of sexual assault cases accepted for prosecution (DOL)	111	118	+6%	●
28. Percent of accepted sexual assault cases with a conviction (DOL)	63.0%	66.1%	+5%	●
29. Number of sexual abuse of minor cases accepted for prosecution (DOL)	109	123	+13%	●
30. Percent of accepted sexual abuse of minor cases with a conviction (DOL)	84.4%	78.0%	-8%	●
31. Number of domestic violence cases accepted for prosecution (DOL)	2,617	2,977	+14%	●
32. Percent of accepted domestic violence cases with a conviction (DOL)	73.8%	73.1%	-1%	●

- Previous Alaska Data
- Current Alaska Data
- Percent Change
 - Increase or decrease in the current Alaska data, relative to the previous Alaska data
 - Some changes are not statistically significant





2012 Alaska Dashboard



- What's behind the numbers
 - Results based accountability: population, performance and outcome measures
 - First time these numbers are presented together
 - Progress: ● Satisfactory
 - Uncertain
 - Needs improvement
 - Hope





Sources for Additional Information



- 2012 Alaska Dashboard: <http://dps.alaska.gov/cdvsa/>
- Alaska Victimization Survey: <http://justice.uaa.alaska.edu/avs>
- André B. Rosay (Anchorage): 786-1821 afabr@uaa.alaska.edu
- Lauree Morton (Juneau): 465-4356 lauree.morton@alaska.gov



Council on Domestic Violence and Sexual Assault PREVENTION

- Systemic Process promoting healthy environments and behaviors reducing the likelihood/frequency of violence
- Primary Prevention – stopping violence before it occurs
- Secondary and Tertiary – keeping the violence from reoccurring



Council on Domestic Violence and Sexual Assault

Risk and Protective Factors

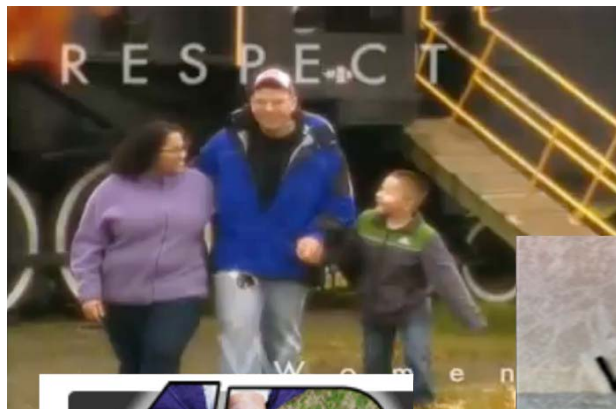
Prevention works to promote healthy relationships by reducing factors associated with violent behavior (risk factors)

And by strengthening factors that support positive behaviors (protective factors)

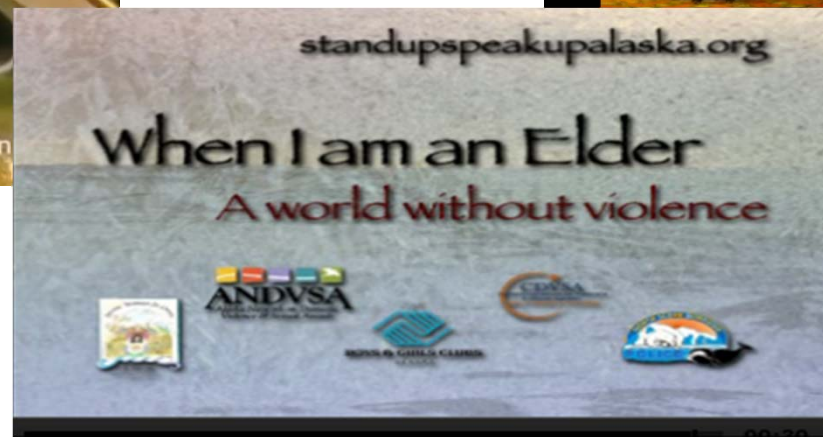


Council on Domestic Violence and Sexual Assault Primary Prevention

Works to change knowledge, norms and behaviors so violence
never occurs



Lead On!
FOR PEACE AND EQUALITY IN ALASKA



Ending Violence...
One Green Dot at a Time



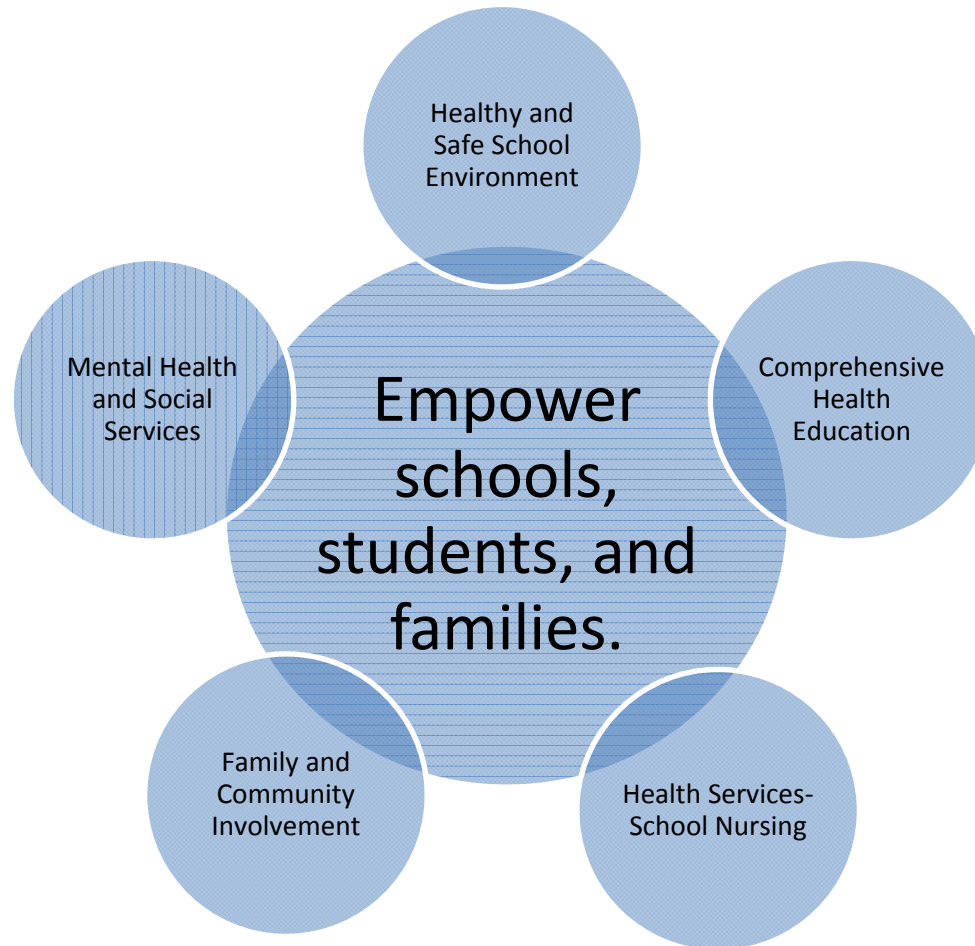
Council on Domestic Violence and Sexual Assault

- Victim Services
 - Residential
 - Advocacy
 - Safety Planning
 - Information and Referral
 - Support





Primary Prevention in Schools





Primary Prevention in Schools

Mental health counseling
Identification and referral
to social services and
trauma informed services
Social and Emotional
Learning (SEL)

Mental Health
and Social
Services

Healthy and
Safe School
Environment

Policies and Programs (anti-bullying etc)
Positive Behavioral Intervention Supports (PBIS)
Positive school climate and increasing connectedness

Empower
schools,
students, and
families.

Comprehensive
Health
Education

Health Education Standards
K-12 Health Education
Fourth R Curriculum
Social and Emotional
Learning (SEL)

Parent involvement
Parent education
Positive youth development
Community engagement and
partnerships

Family and
Community
Involvement

Health Services-
School Nursing

School nurses and
school-based health centers





Health and Safety Coordinator Position

- Focuses primarily on school-based programs for Domestic Violence and Sexual Assault prevention in schools
- Serves on the Governor's Initiative Work Group(s) and State Council on Domestic Violence and Sexual Assault
- Serves as health education expert for the Department
- Collaborates with partners and provides guidance for comprehensive and coordinated school health and safety programs
- Coordinates training and provides technical assistance
- Consults on EED DVSA E-learning Courses
- Collects and interprets school health data for planning and evaluation



Healthy Relationships Curriculum

- Curriculum for students grades 7 – 9
- Developed in Canada by the Centre for Addiction and Mental Health (CAMH), Centre for Prevention Services
- Adapted for use in Alaska
- Evidence-based
- Focuses on healthy relationships, decision making, skill development through role plays and practice

Topics Cover

- Bullying
- Personal relationships
- Peer and dating violence
- Substance abuse
- Other high risk behaviors

Outreach – Reporting Harm

Office of Children's Services

Increasing Public Awareness

- Regional mass distribution of posters and business cards emphasizing the importance of reporting suspected child abuse.
- 2011 PSA entitled “*It’s my Job to Prevent Child Abuse*” – premiered in April & still runs regularly. Will hit again big in April ‘12 (Nat. Child Abuse Prev. Month)
- Increased visibility and access to mandatory reporting hotline numbers on OCS website.

Outreach – Reporting Harm

Senior & Disabilities Services – Adult Protective Services

Increasing Public Awareness

- Produced Mandatory Report of Harm training video & distributed to rural hubs. Next to smaller villages.
- On-going training/education by APS staff on reporting harm (statewide).
- APS receives approx. 500 reports/month.

Rural Pilot Projects

Division of Behavioral Health

Four community projects were selected through a competitive grant process to begin February 2011.

(1) Implementation Project:

- **Dillingham CANDU Implementation Project-\$800,000**

(3) Capacity Building Projects:

- **Kodiak Island Turning the Tide Building Capacity Project - \$200,000**
- **Sitka Pathways to a Safer Sitka Building Capacity Project - \$200,000**
- **Bethel Building Awareness Project -\$200,000**

Trauma Informed Care

Division of Behavioral Health

Training Impacts

- 714 individuals trained (*since Feb 2011*)
- Participants include- Behavioral Health, Domestic Violence, Health Care, Juvenile Justice, Child Protection and Child Advocacy
- Glowing evaluations- state Trauma Informed Care provides an answer for their most complex cases
- Expansion- Training at the Early Childhood Mental Health Conference and Annual School on Addictions & Behavioral Health

Trauma Informed Care

Division of Behavioral Health

Screening

- Alaska Screening Tool (AST) identifies Trauma in the elements of the instrument
 - 61% reported Trauma Symptoms in FY 2011
 - 69% reported an adverse experience
 - 18% reported intimate partner violence
- Clinical interviews utilizing the technology framed in Trauma 101 shapes effective treatment

Community Engagement

FWWI Model

- Funding provides communities with education & training, leadership development and technical assistance.
- Equips community leaders with skills and knowledge to assume responsibility for their community's efforts to reduce family violence and child maltreatment.

FY2011- \$400,000 Dillingham & Bethel

FY2012- \$200,000 Bethel

Fed. Funded Prevention Programs

Division of Public Health

Maternal, Infant, and Early Childhood Home Visiting -- \$ 1 million per year for each of 5 years (through 2015) from Health Resources and Services Administration

- Utilizes the Nurse Family Partnership model program to offer direct services including screening and education for DV/SA during home visiting to program participants in the Anchorage area. A safety plan, referral and follow up are conducted when needed.
- RFP for local contractor will be out by March 1, 2012.

Alaska Family Violence Prevention Project -- \$50,000 in FY12 from Health Resources and Services Administration Title V Block Grant

- Program started in 1993.
- Provides research, training curricula, technical assistance and resource library for providers and organizations.

Fed. Funded Prevention Programs

Division of Public Health

Personal Responsibility Education Program -- \$250,000 per year (through 2015) from Family and Youth Services Bureau

- Collaborate with Department of Education & Early Development to implement the Fourth R curriculum in Alaska schools
- Evaluation of curriculum underway

Healthy Start -- \$400,000 per year for each of 5 years (through 2015) from HRSA

- Direct client services will include screening and education of all Healthy Start clients for DV/SA, as well as conducting brief interventions, a safety plan, and referral and follow up, when needed.
- Group health education sessions for all community members will likely occur.
- Data will be gathered for evaluation purposes.

Additional Prevention Activities

Division of Public Health

Public Health Nursing Centers

- All clients are screened for DVSA. Suspected cases of Sexual Abuse of Minors are reported to OCS.
- Education to individuals and groups including school groups – teens are educated on safe and unsafe dating practices and resisting sexual coercion.

RSA with Division of Public Assistance Temporary Assistance for Needy Families

- Stand Up Speak Up Campaign- Teen dating violence and leadership campaign
 - Current funding: **\$20,000 in FY 12**
- Lead On for Peace and Equality in Alaska- youth leadership and violence prevention mini summit- collaboration with ANDVSA and others
 - Current funding: **\$10,000 sponsorship in FY 12**
- Youth violence prevention grants- ANDVSA administers on WCFH's behalf.
 - Current funding: **\$20,000 in FY 12**

Screening & Behavioral Services

Alaska Mental Health Trust – Alaska Mental Health Board

Early Childhood Screening & Brief Behavioral Services

\$400,000 MH

FY13 “Brief Behavioral Services” are expected to become available for young children & their families in primary care offices and community mental health centers.

- Will fund outreach, training and technical assistance to providers on administering Early & Periodic Screening, Diagnostic and Treatment (EPSDT) screening and program tools.
- Outreach & education to parents about EPSDT program and services available to their family.

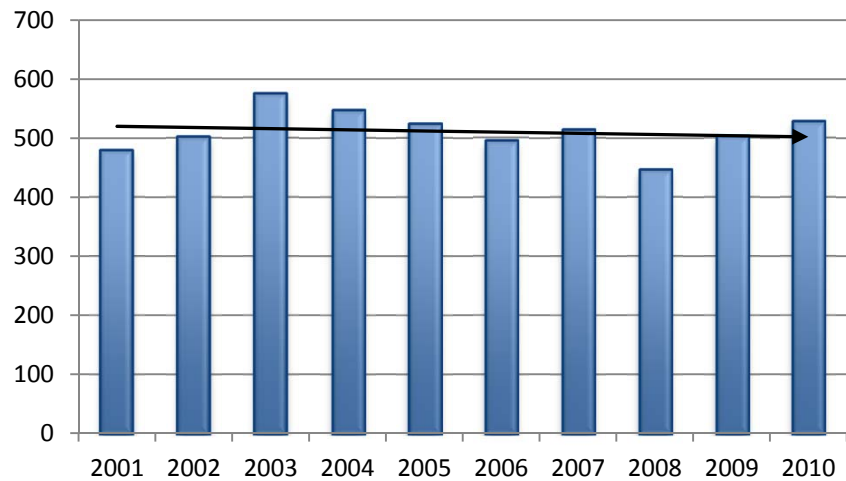
Department of Public Safety

- Provide a law enforcement presence in every community that desires one
 - Increase the number of VPSO positions
 - Additional trooper posts
- Improve law enforcement response
 - Adding trooper & investigator positions
 - VPSO support troopers
 - Domestic violence follow-up troopers
 - Technical Crimes Unit investigators
 - Child Abuse Investigation Unit investigators
 - Major Crimes Unit investigators
 - Increased funding for forensic medical sexual assault exams
 - Development of pediatric sexual assault kits

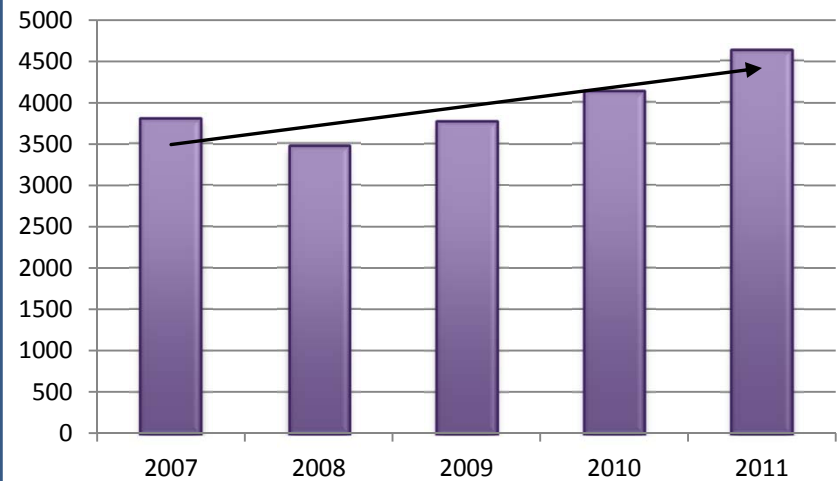
Department of Public Safety

- Training
 - Online domestic violence training for VPSOs
 - Child forensic interview training
 - Integrated VPSO/VPO training
 - Report writing training
- Improved evidence and case handling
 - Crime lab

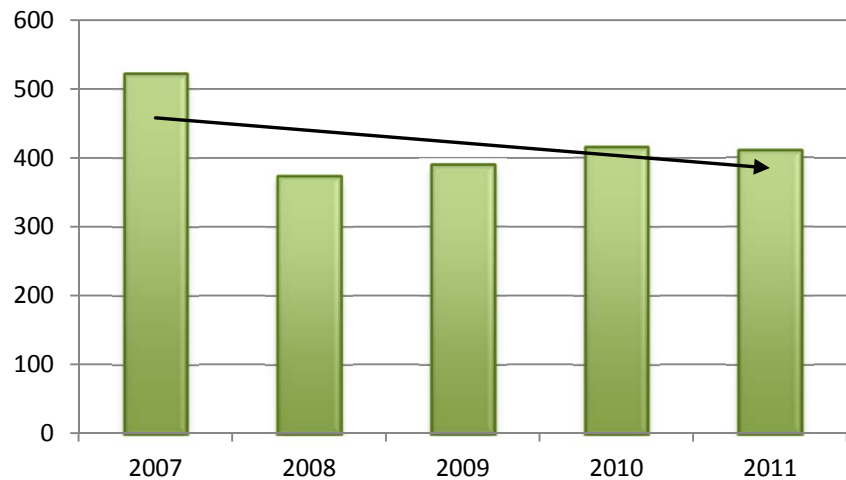
Forcible Rape (UCR)



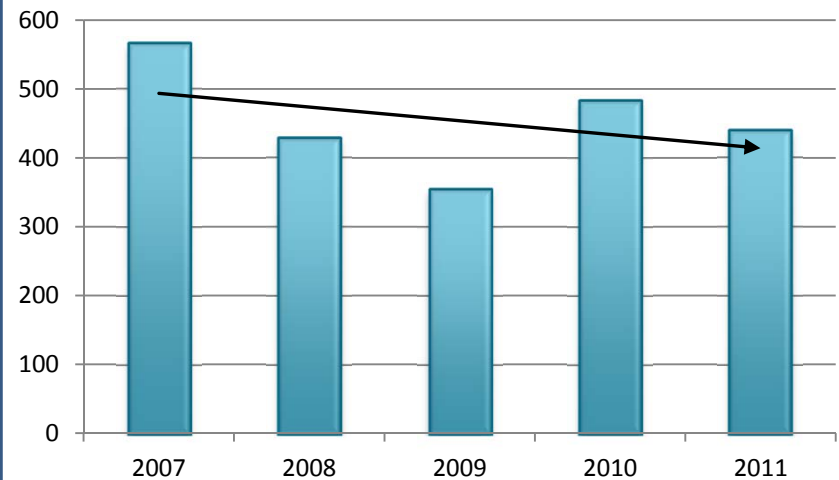
Domestic Violence



Sexual Assault



Sexual Abuse of a Minor



Department of Law

- Drafted and provided advice leading to passage of bills in 2010 and 2011 that
 - Strengthened laws on sexual exploitation of children, domestic violence, stalking, and evidence retention
 - Strengthened penalties
- Working with Governor's Office on 2012 legislation that further strengthens laws and addresses legal issues with 2012 laws

Department of Law

- Over 3 years, replaced \$2.5 million in federal grants for prosecutors, paralegals, and staff with state funds
- Created the Cybercrimes Unit staffed by a full time prosecutor
 - 90% of investigations involve internet child exploitation
- All 100+ line prosecutors received specific training on DVSA and stalking at DA's conferences

2012 Legislation

- Adopts conspiracy laws for human trafficking and sex trafficking
- Amends the law prohibiting the distribution of indecent materials to minors in response to a decision by the federal district court that Alaska's statute is overbroad
- Changes the terminology for the crime of promoting prostitution to "sex trafficking;"
- Increases the penalty for being a patron of a prostitute if the prostitute is under 18 years of age
- Allows for the forfeiture of property in prostitution cases
- Allows the court to use contemporaneous two-way video conference testimony under special circumstances
- Requires every person to register as a sex offender in Alaska if the person is already required to register in another jurisdiction

LAW's Requested FY13 Budget Increments

- A second cold case prosecutor: \$225.0
- Continuation of language access programs for victims and witnesses: \$140.0
- Fully fund three Medicaid fraud investigators approved in FY12: \$28.1
- Fully fund Kotzebue attorney approved in FY12: \$52.2
- Fully fund Palmer Child Protection attorney and paralegal approved in FY12: \$87.5

Corrections: Fairbanks Pilot

1. To test the effectiveness of formal supervision on misdemeanor DV offenders in terms of
 - a. Improving victim safety
 - b. Holding offenders accountable for compliance with court ordered conditions of probation in a swift, certain and proportionate manner
2. To test the extent to which offender accountability and victim safety is promoted by the DV probationer's reduced use of alcohol and drugs
3. To gauge the impact of the DV probationer's consistent attendance in a Batterer Intervention Program on victim safety and on the reduction of DV recidivism



Pilot: How it works

1. The initial placement goal is to 20 offenders, with a future goal of at least 60 offenders under formal supervision
2. Selection criteria:
 - a. Offender must have committed a misdemeanor DV assault on an intimate partner
 - b. Offender must have had at least two prior documented DV assaults
 - c. Score 7 or higher on the Ontario Domestic Assault Risk Assessment tool
3. Program outcomes to be evaluated by UAA Justice Center

What's Different About This Approach?

1. **Supervision:** Normally misdemeanor offenders are not supervised by a probation officer
2. **Accountability:** Often the criminal justice system doesn't know that a misdemeanor probationer hasn't satisfied his court ordered conditions of probation
3. **Justice not delayed:** The probationer will receive a swift, certain and proportionate sanction by the judge soon after the violation



Expanded Bethel Sex Offender Management Program

1. Expand current sex offender management in the Bethel area to provide community-based outpatient sex offender treatment to offenders who are not receiving residential treatment (CRC) and as aftercare to CRC graduates.
2. This service is critically needed given that 48% of state sexual assault arrests come from Southwest Alaska. This leads area wide to a high number of sex offenders on probation and parole.

Mat-Su Area Institutional Sex Offender Program

1. DOC currently incarcerates over 600 convicted sex offenders.
2. Currently, DOC has 29 beds at LCCC for the provisioning of institutional sex treatment to higher risk offenders.
3. 30 more institutional treatment beds will improve public safety outcomes with improved use of the containment model.