



The North Slope region is over twice the size of Iceland and encompasses eight villages. The communities are remote and not connected by a permanent road system.









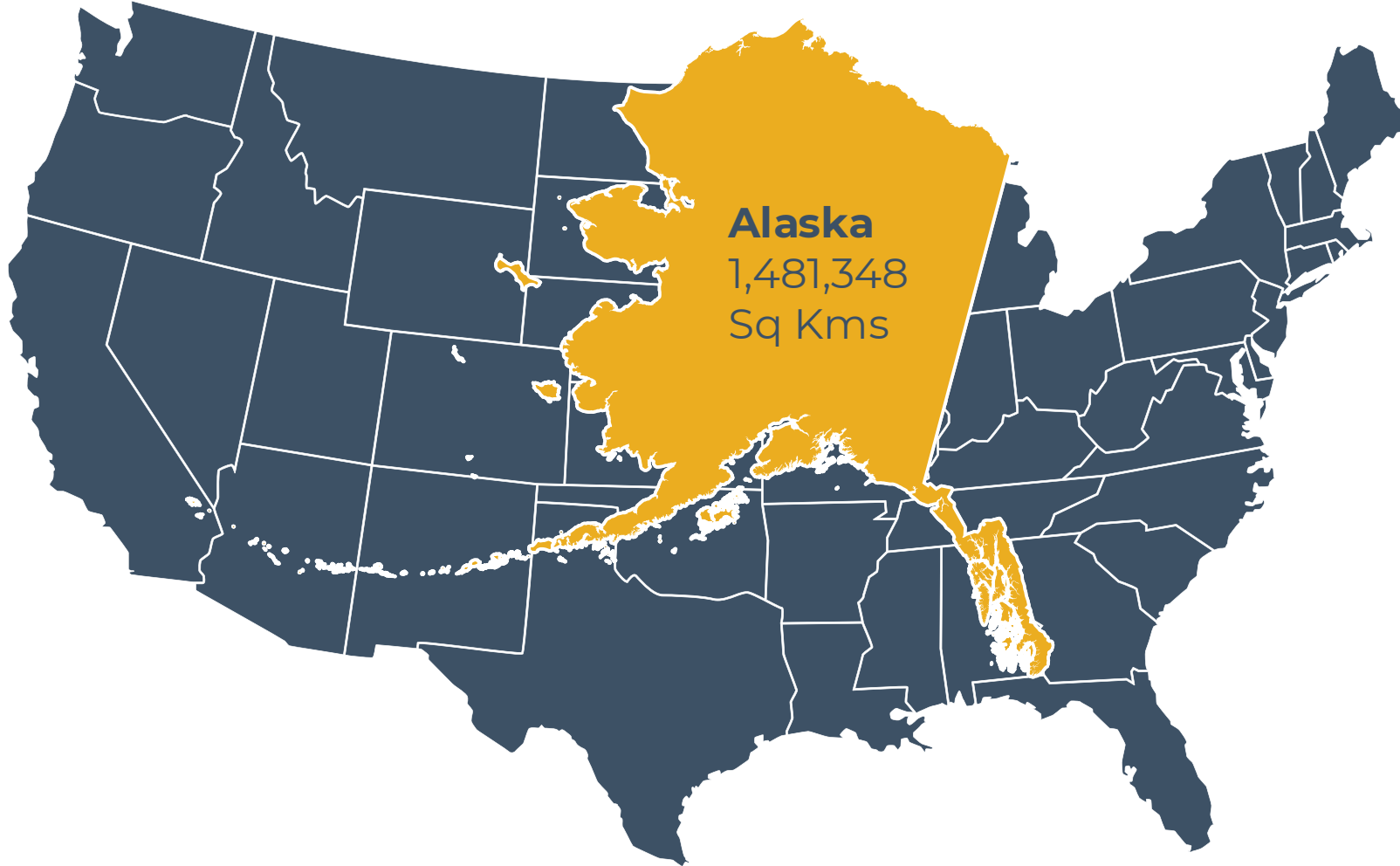






Contiguous U.S.

7,663,941 Sq Kms



Alaska
1,481,348
Sq Kms



ALASKA'S SIZE

- Alaska is one-fifth the size of the Lower 48, and more than thirteen times the size of Iceland
- Alaska has 33,904 miles of shoreline, with coastlines on the Arctic Ocean, Pacific Ocean, and Bering Sea.









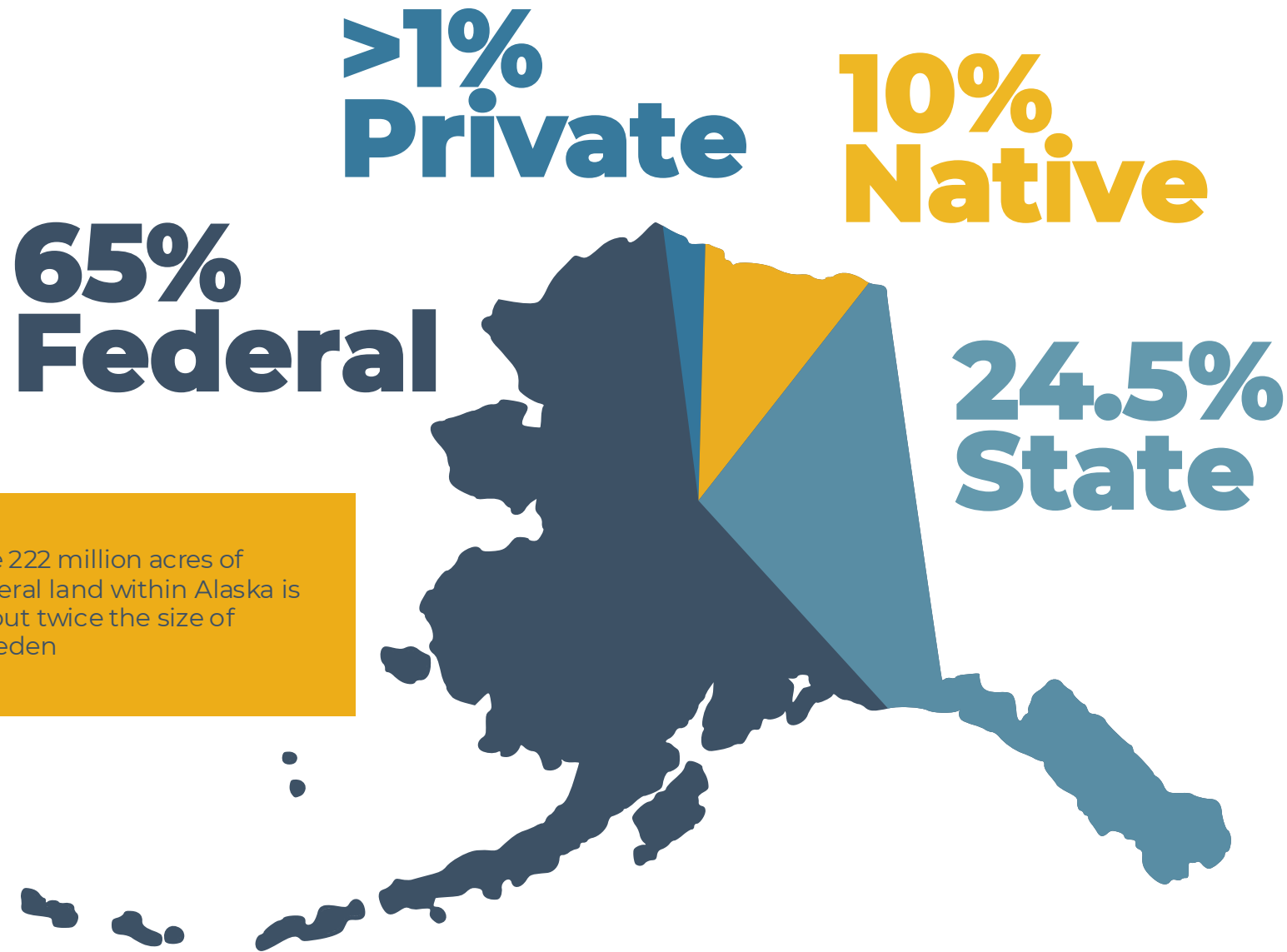












WHO OWNS ALASKA

- The federal government is the largest landowner in Alaska with more than 60% of the total area (222 million acres).
- This acreage includes national parks, wildlife refuges, national forests, military reservations, and the National Petroleum Reserve in Alaska.
- More than a dozen federal agencies manage federal lands in Alaska.

















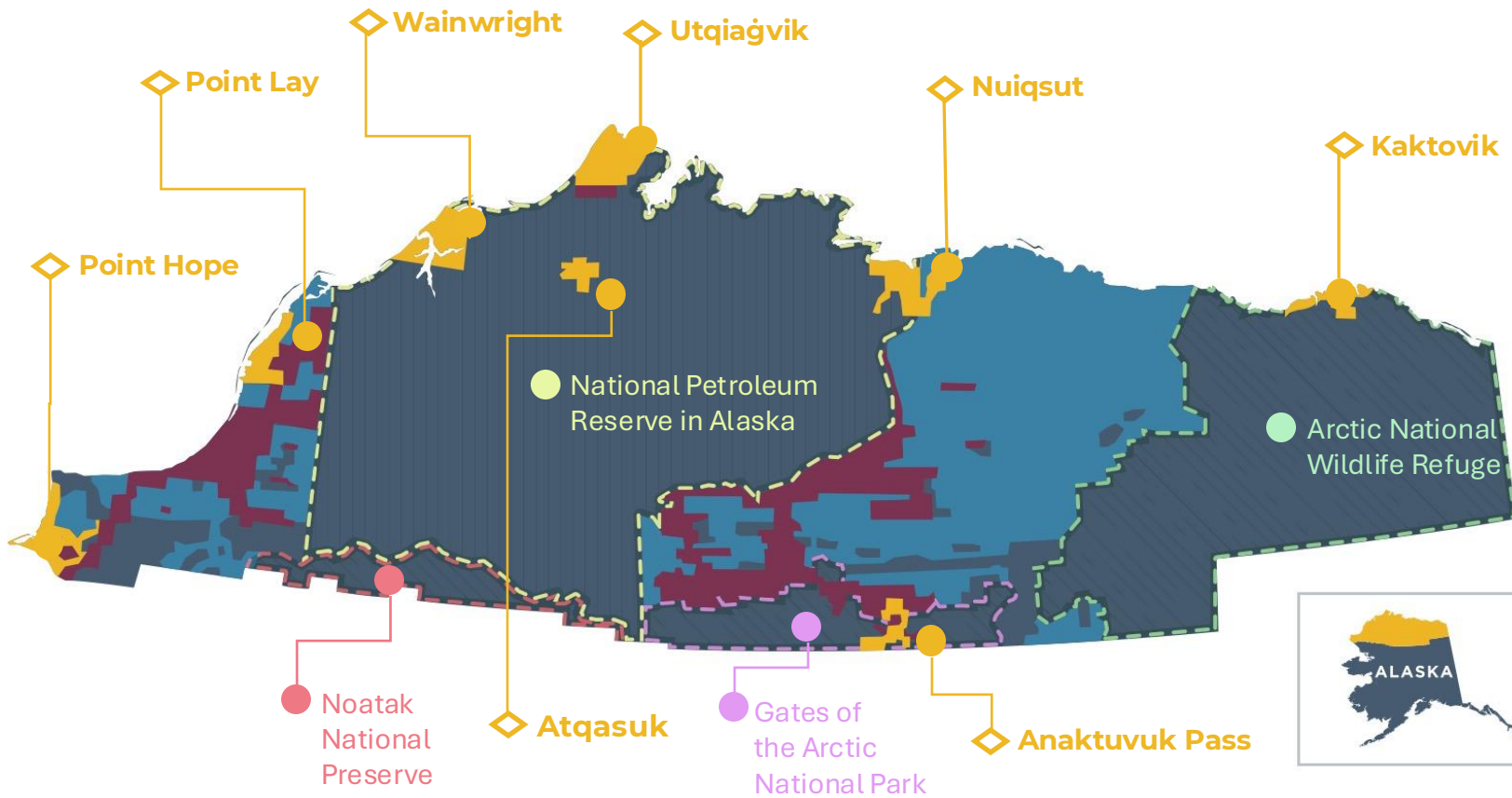


**Federal
Lands**

**State
Lands**

**ANC
Lands**

**Village
Lands**



Land Ownership of the North Slope

- The North Slope is America's northernmost region, larger than the size of Iceland. It is home to roughly 11,000 residents who live in eight communities that are not connected by a permanent road system.
- The vast majority of land within the Borough is zoned Conservation (96%).
- The federal government owns more than 50 million acres of land on the North Slope and is the largest landowner in the region.







TIKIGAQ SCHOOL
HOME OF THE HARPOONERS











