



Kenai LNG Project Overview

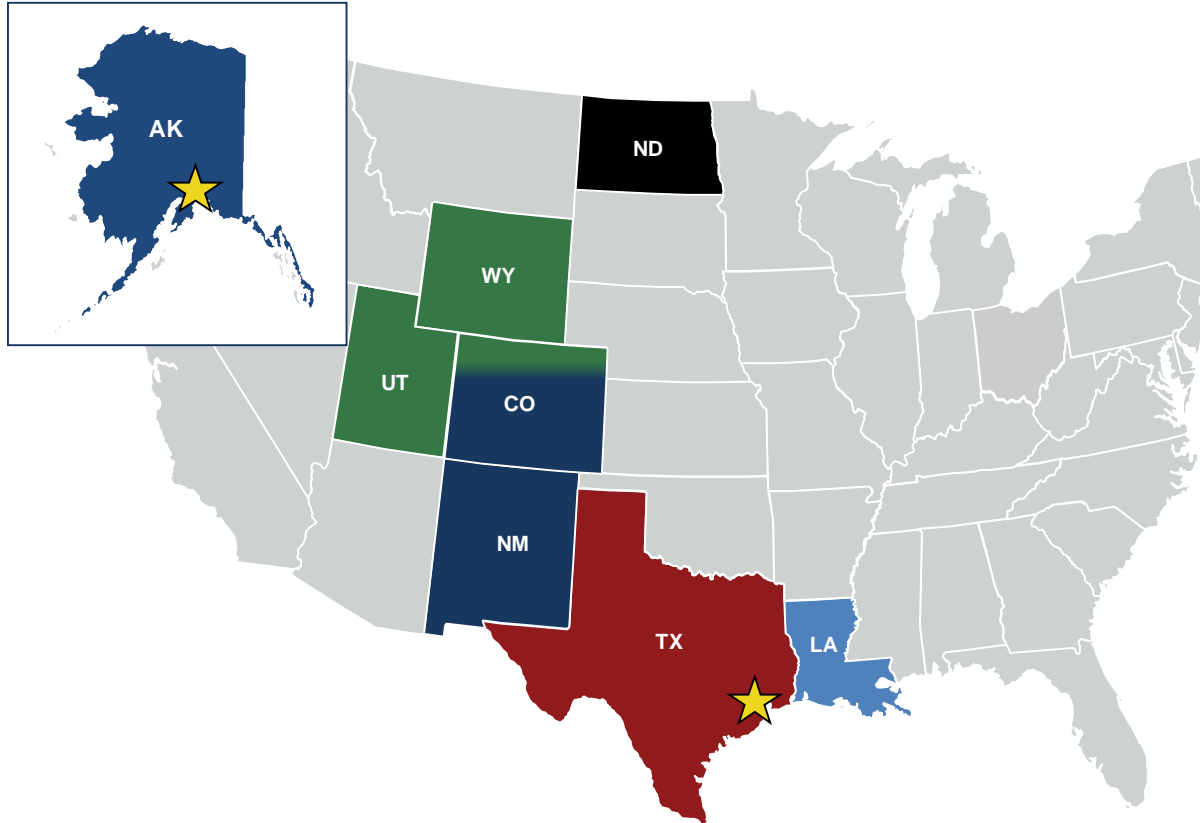
Alaska House Energy Committee Meeting

January 27, 2026



Harvest Midstream Overview

Harvest is a premier private US energy infrastructure company with a diverse set of assets



Employees	~650
Operating Regions	6
Miles of Pipeline	~9,100 miles
Natural Gas Processing & Treating Capacity	~3.2 Bcf/d
NGL Fractionation Capacity	40 MBbl/d
Crude Storage Capacity	~14.3 MMBbls



Note: Operating statistics includes 8/8ths contribution from Joint Ventures and TAPS

Harvest Alaska Operations

Overview

North Slope Assets

- Acquired from BP in 2014 & 2020
- 156 miles of crude and condensate pipelines⁽¹⁾
- Oil movements essential source for PADD 5 refineries
- NS LNG facility placed in-service in December 2025

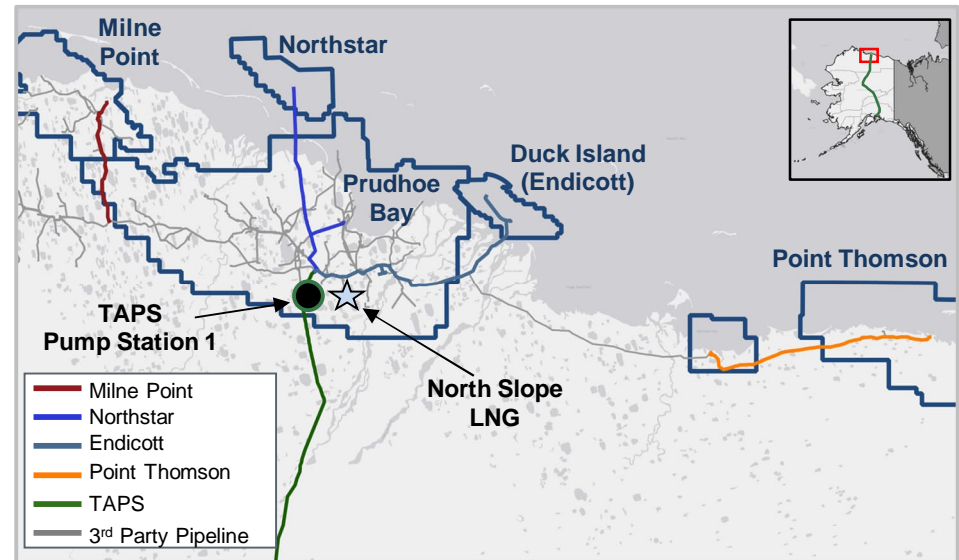
Trans-Alaska Pipeline (TAPS)

- Harvest holds 49% undivided joint interest owner stake
- 800-mile pipeline from North Slope to Port of Valdez
- 9.2 MMBbls of crude storage at Valdez Marine Terminal

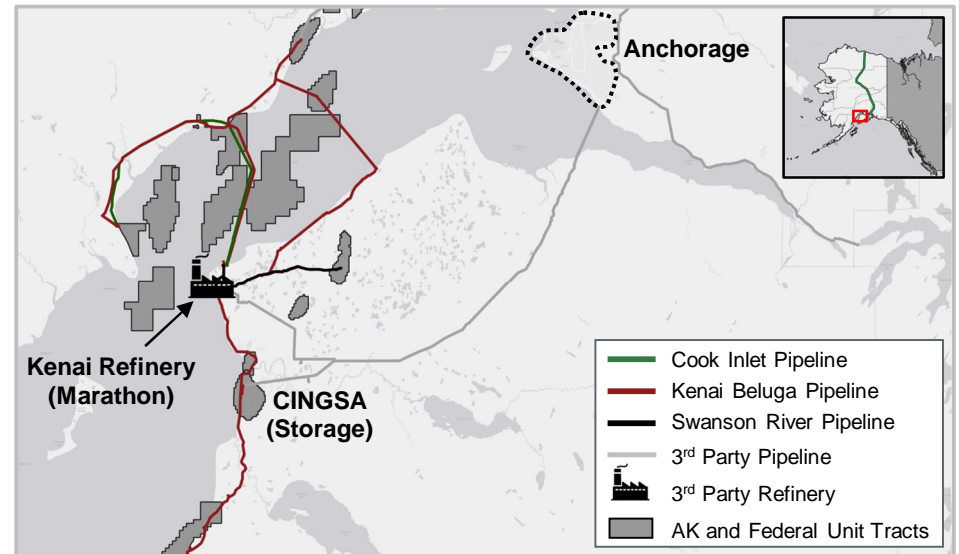
Cook Inlet Assets

- Acquired from Chevron in 2011, Marathon in 2012
- 225 miles of natural gas pipelines
- 73 miles of oil pipelines
- Critical gas supply for utilities & oil supply for refinery

North Slope Asset Map



Cook Inlet Asset Map



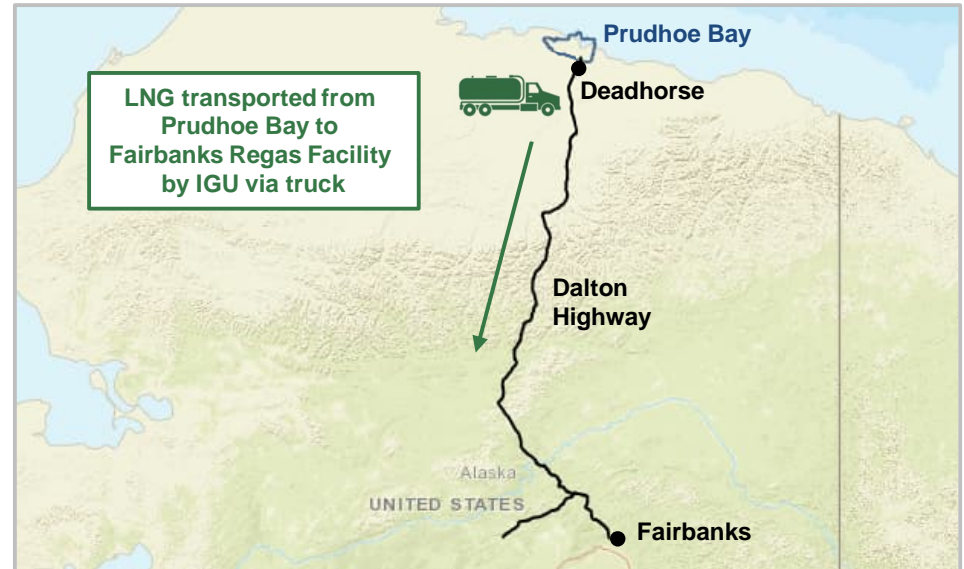
⁽¹⁾ Includes pipeline miles operated by Harvest in joint ventures; mileage is approximate

Harvest North Slope LNG

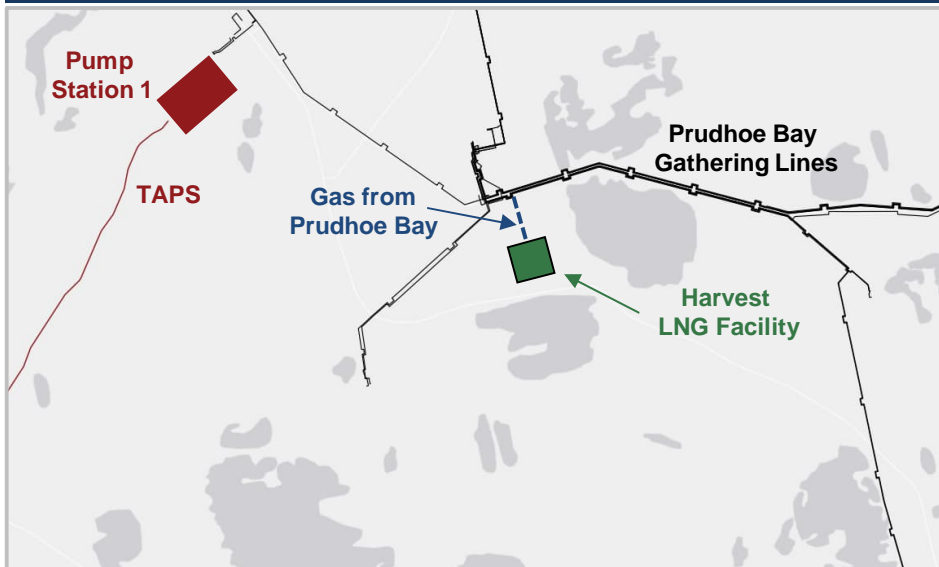
Project Highlights and Update

- First project to commercialize gas on the North Slope
- Partnered with NANA on construction of facility
- Commenced commercial operations Dec. 1, 2025
- Execution of commercial agreement to first gas delivery in under 36 months

LNG Transportation Map



Facility Location Map

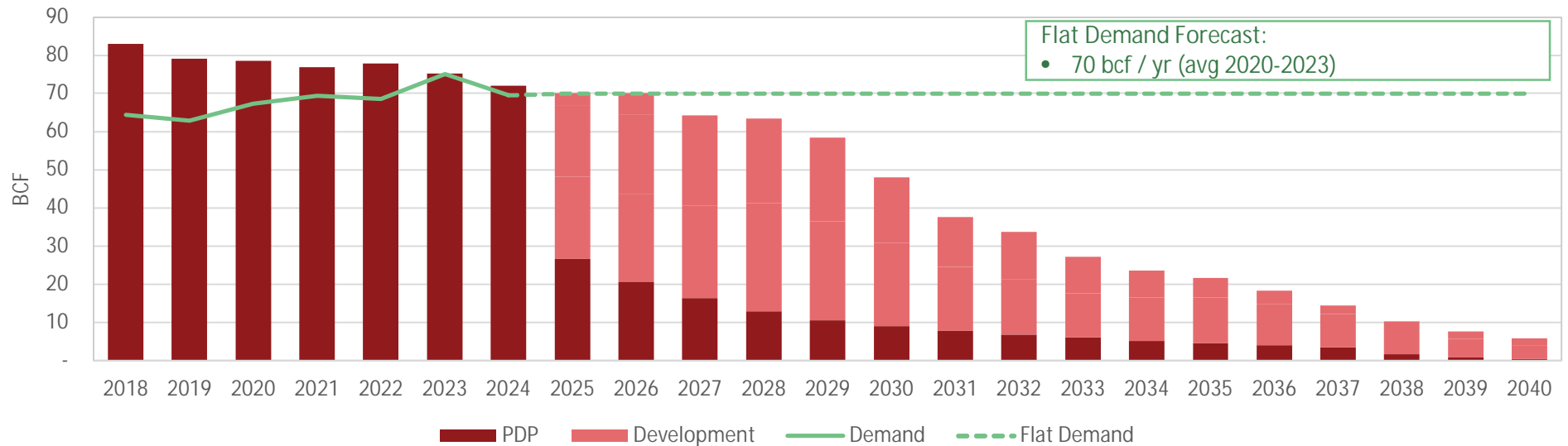


Aerial View

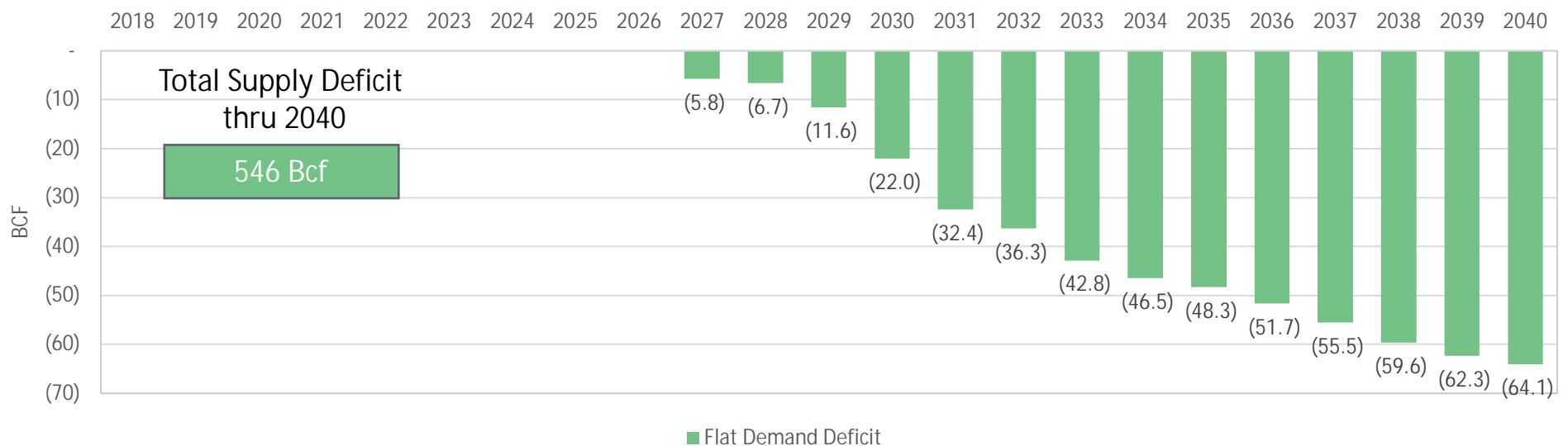


Alaska Gas Market – Supply & Demand

Cook Inlet Production & Demand Forecast



Supply Deficit



Kenai LNG Site Overview

Summary & Photo

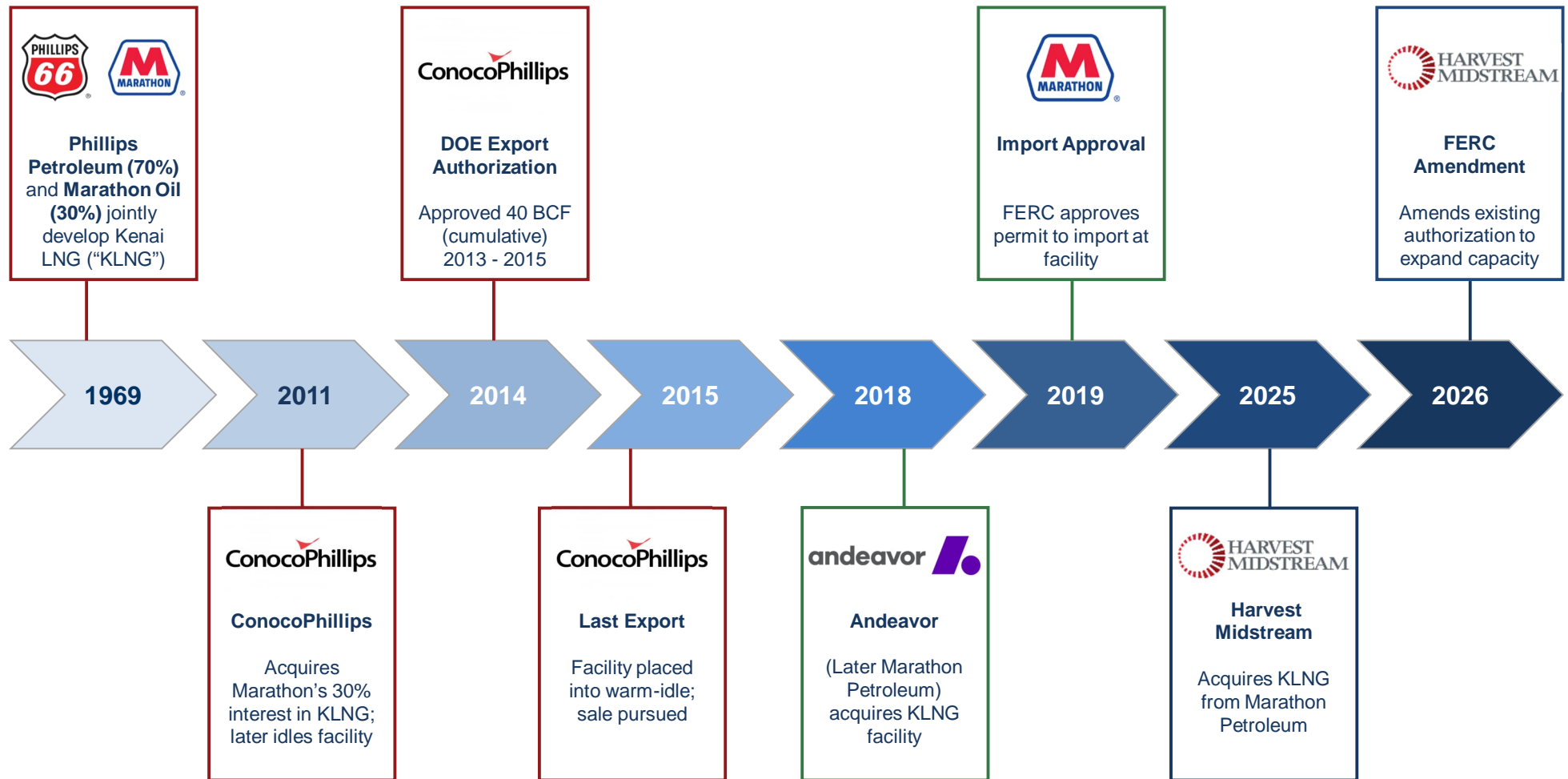
Item	Description
1 Land	<ul style="list-style-type: none"> 101.8 acres
2 LNG Export	<ul style="list-style-type: none"> 1.6 MTPA (77 bcf / yr; 210 MMcf/d) Feed gas treating, liquefaction, compression
3 Storage	<ul style="list-style-type: none"> (3) LNG tanks x ~36,000 m³ (~0.8 bcf) Total capacity 107,000 m³ (2.3 bcf)
4 Marine Terminal	<ul style="list-style-type: none"> Capacity – 138,000 m³ vessel (2.9 bcf) Dock & tidewater lease renewed thru 8/3/2042
5 Distribution	<ul style="list-style-type: none"> Pipeline-connected to KBPL & MPC Refinery Gravity-loading truck rack



Aerial Map



Kenai LNG Timeline

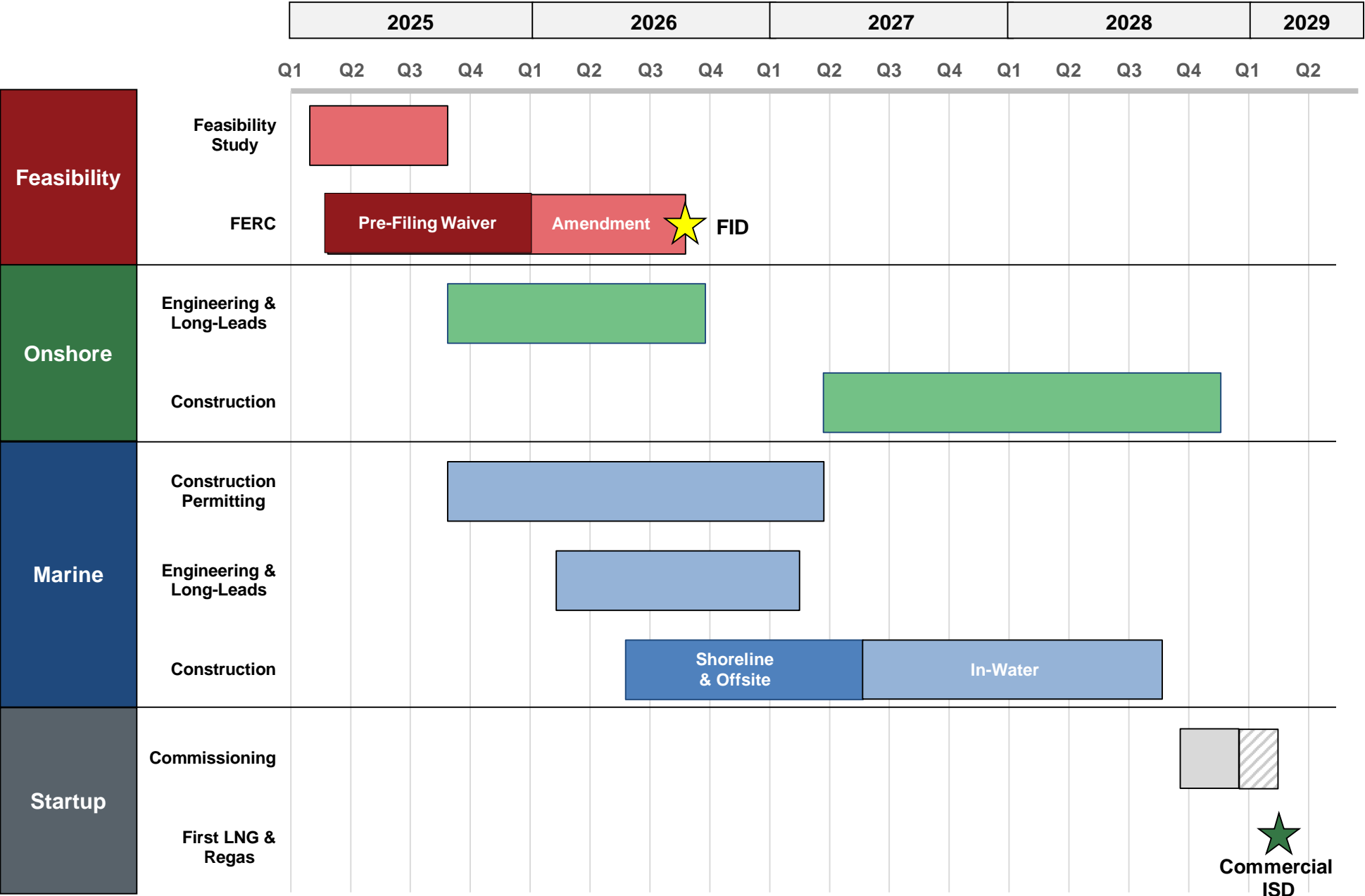


Kenai LNG Regasification Project Scope



Marine / Dock Scope		Onshore Scope	
1	Reinforce Existing Dolphins (x8)	5	Install 5 New Compressors (~10,000 HP)
2	Replace Marine Loading Arms (x3)	6	Install LNG Vaporizers (2 x 100 mmcf/d)
3	Install New Mooring Dolphins (x2)	7	Install 6 New LNG Pumps (~5,000 HP)
4	Extend Shoreline Bulkhead to the North	8	Modernize Control Room & Build Meter Site

Project Timeline



Conclusions

1

Harvest is committed to Alaska's energy security, sustaining jobs, and ensuring market access

2

Kenai LNG can meet the Railbelt's energy needs on both a temporary and long-term basis

3

Project positioned as a fast and cost-efficient entry solution for solving near-term gas shortage

4

Prepared to order long-leads and schedule construction upon execution of offtake agreements