



## **Fast Facts about Alaska's Port**

The Port of Anchorage provides an estimated 90% of the merchandise goods for 85% of Alaska's populated area.

- This includes over 200 villages and rural towns across Alaska
- It is the major point of entry for containerized cargo in Alaska
- Annually, around 240,00 containers move through the Port
- Since 2000, an average of 4 million tons of goods and materials pass through the Port's facilities annually.

The Port of Anchorage is also an important hub for fuel providing:

- 100% of the jet fuel used at Joint Base Elmendorf Richardson
- 65% of the jet fuel used at Ted Stevens International Airport
- 1.4 million gallons of fuel to western Alaska for heating oil, gasoline, and diesel
- It is an important source of gasoline for the Anchorage and Southcentral area.

The Port of Anchorage is a Department of Defense designated National Strategic Seaport, one of only 19 in the national to have such designation.

- Port facilities have supported over 30 deployments since 2005
- Over 18,000 pieces of military cargo have passed through the Port over the past 7 years.

The Port of Anchorage is an economic engine for Alaska and is essential to the distribution of goods throughout the state.

- Over \$700 million annually in economic impact to the state
- \$50 million aggregate annual payroll from Port Stakeholders
- Over 3,600 vehicles move through port per day when containerships are offloading.
- Nearly 100 million pounds of goods pass through the port annually which are distributed across the state as bypass mail





## **Expansion Project Facts**

### **Expansion Facts**

The Port is 50 years old and in a deteriorated condition. The facilities require costly annual repairs, and are vulnerable to failure during a high magnitude earthquake.

The expansion project will create:

- 2 new barge berths
- 2 new large cargo vessel ship berths
- Deeper draft for modern vessels, larger spacing between berths.
- 65 acres of new land for commercial/industrial use
- Improved seismic capacity
- Secure access to Joint Base Elmendorf-Richardson

### **Creating Jobs**

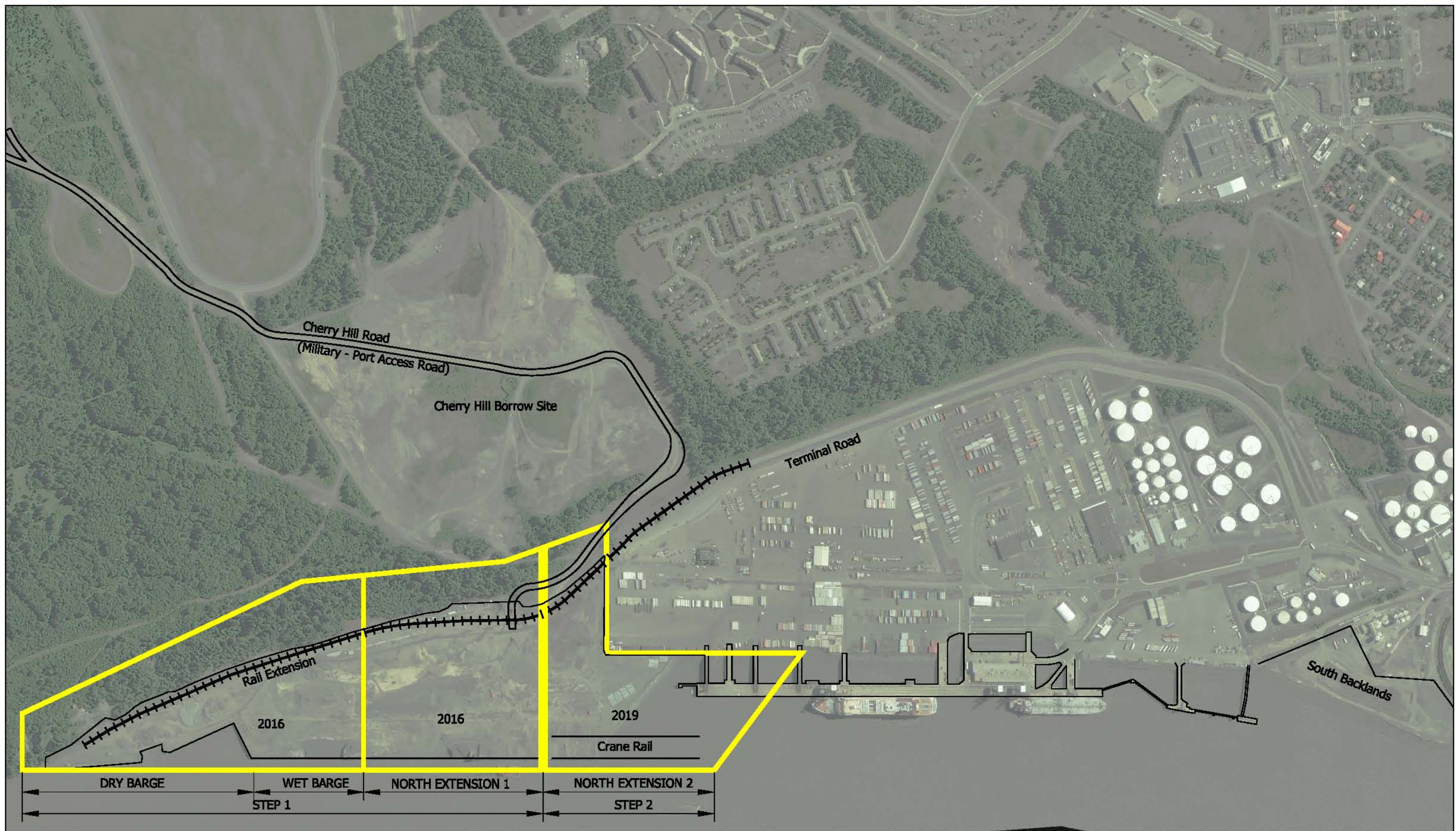
- Growth in business at the expanded Port will provide for jobs around the state and advantages in the rural areas. Construction, energy projects, pipeline, etc.
- Many craft jobs will be required to complete this important infrastructure project including iron workers, electricians, carpenters, pile bucks, truck drivers, laborers, plumbers, concrete workers, and more.
- Over 200 companies involved in project from 2005 – 2011
- Moving forward, the project will require more than 200 jobs annually.

### **Project Management**

We have made major changes to ensure that future construction work will be completed successfully. Last fall, the Municipality signed a new agreement with the Maritime Administration that will hand over all contracting, design and construction responsibilities to the Municipality or their designee by the end of May, a significant change from the previous form of project management. The agreement also formalized an oversight committee that meets on a weekly basis.







\* Assumes full funding

AUG 30, 2011

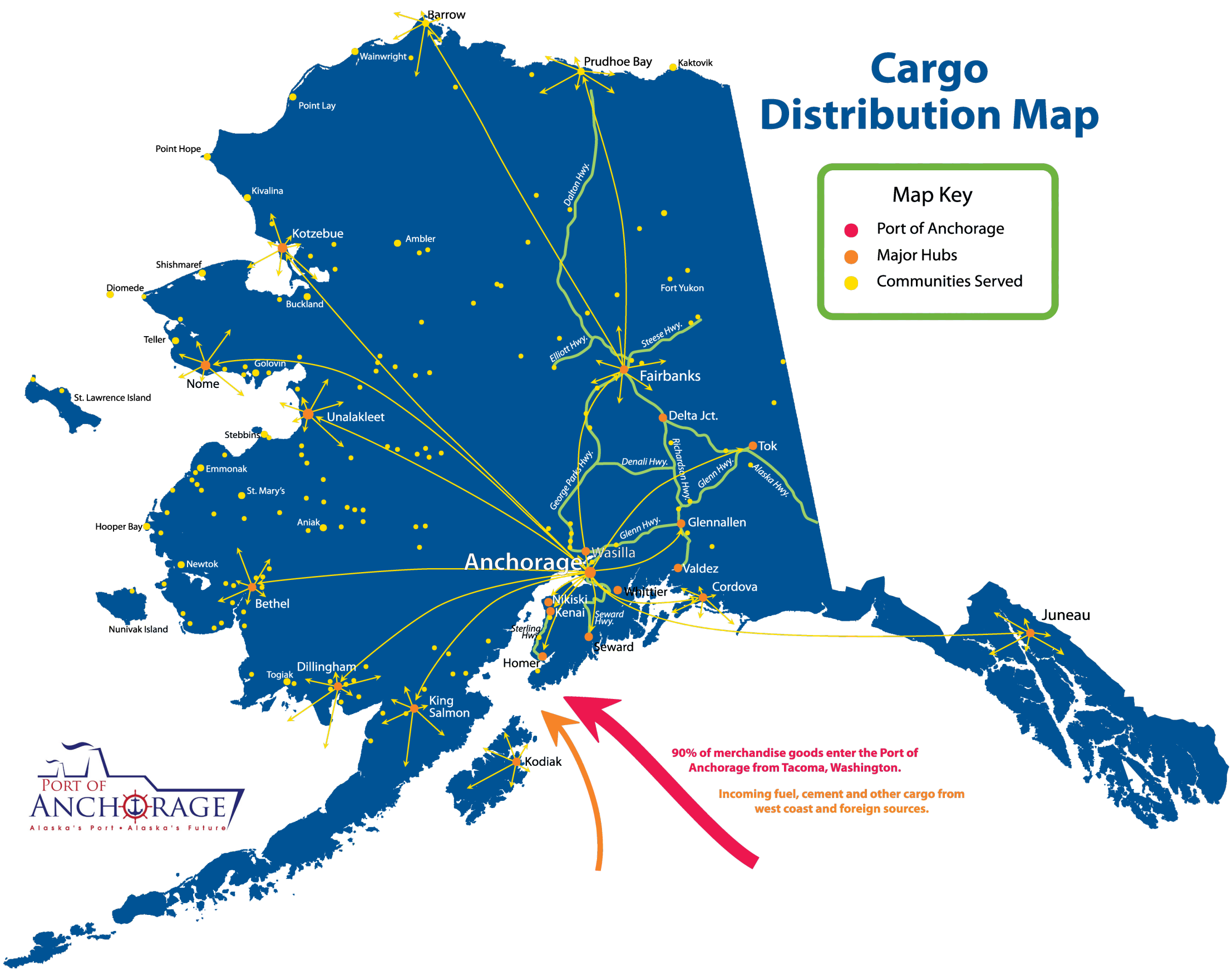
# Intermodal Expansion Project Phasing Plan



# Cargo Distribution Map

**Map Key**

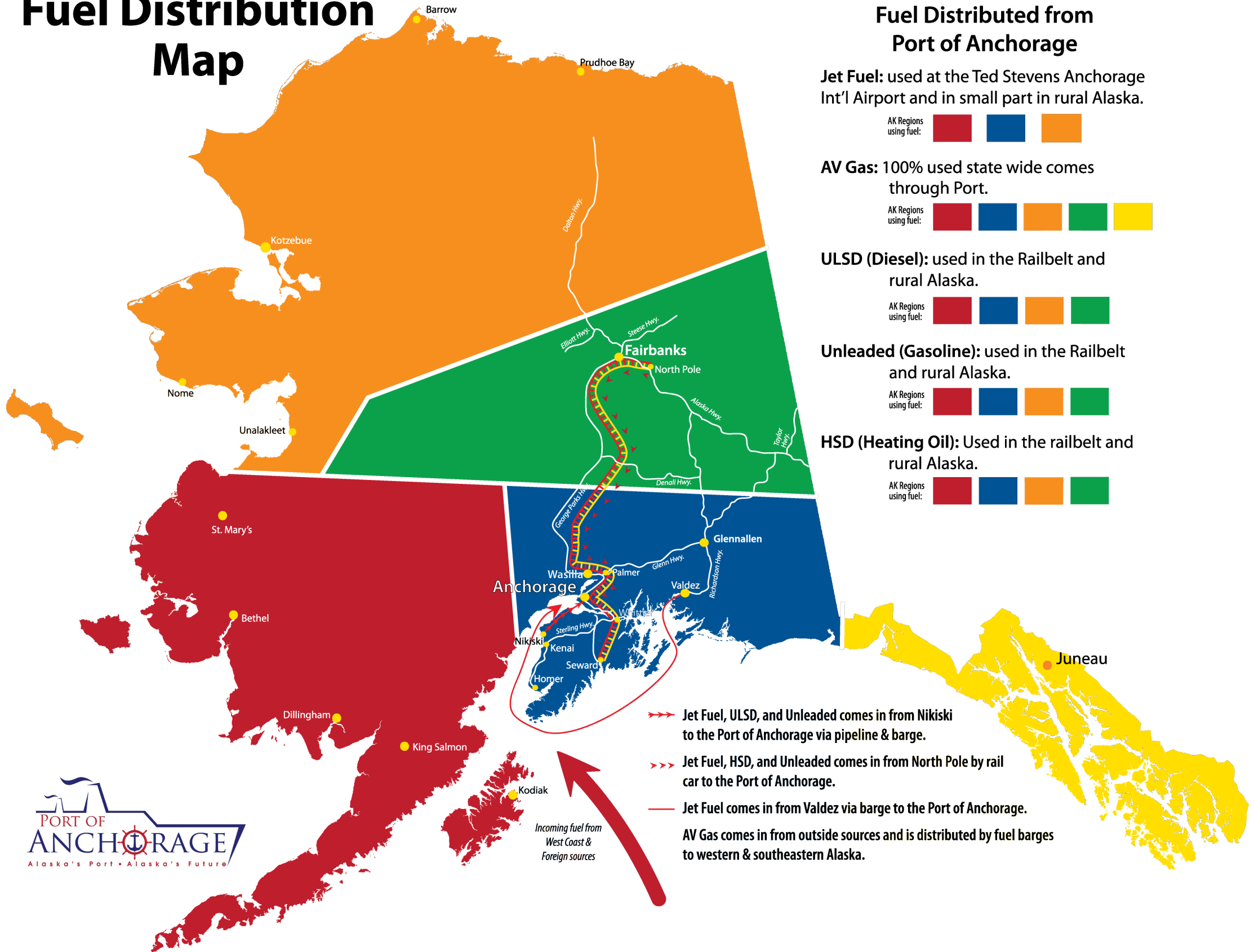
- Port of Anchorage
- Major Hubs
- Communities Served



**90% of merchandise goods enter the Port of Anchorage from Tacoma, Washington.**

**Incoming fuel, cement and other cargo from west coast and foreign sources.**

# Fuel Distribution Map



## Fuel Distributed from Port of Anchorage

**Jet Fuel:** used at the Ted Stevens Anchorage Int'l Airport and in small part in rural Alaska.

AK Regions using fuel:

**AV Gas:** 100% used state wide comes through Port.

AK Regions using fuel:

**ULSD (Diesel):** used in the Railbelt and rural Alaska.

AK Regions using fuel:

**Unleaded (Gasoline):** used in the Railbelt and rural Alaska.

AK Regions using fuel:

**HSD (Heating Oil):** Used in the railbelt and rural Alaska.

AK Regions using fuel:

- >>> Jet Fuel, ULSD, and Unleaded comes in from Nikiski to the Port of Anchorage via pipeline & barge.
- >>> Jet Fuel, HSD, and Unleaded comes in from North Pole by rail car to the Port of Anchorage.
- >>> Jet Fuel comes in from Valdez via barge to the Port of Anchorage.
- >>> AV Gas comes in from outside sources and is distributed by fuel barges to western & southeastern Alaska.

Incoming fuel from West Coast & Foreign sources