



BOEM BUREAU OF OCEAN
ENERGY MANAGEMENT

Alaska OCS Region

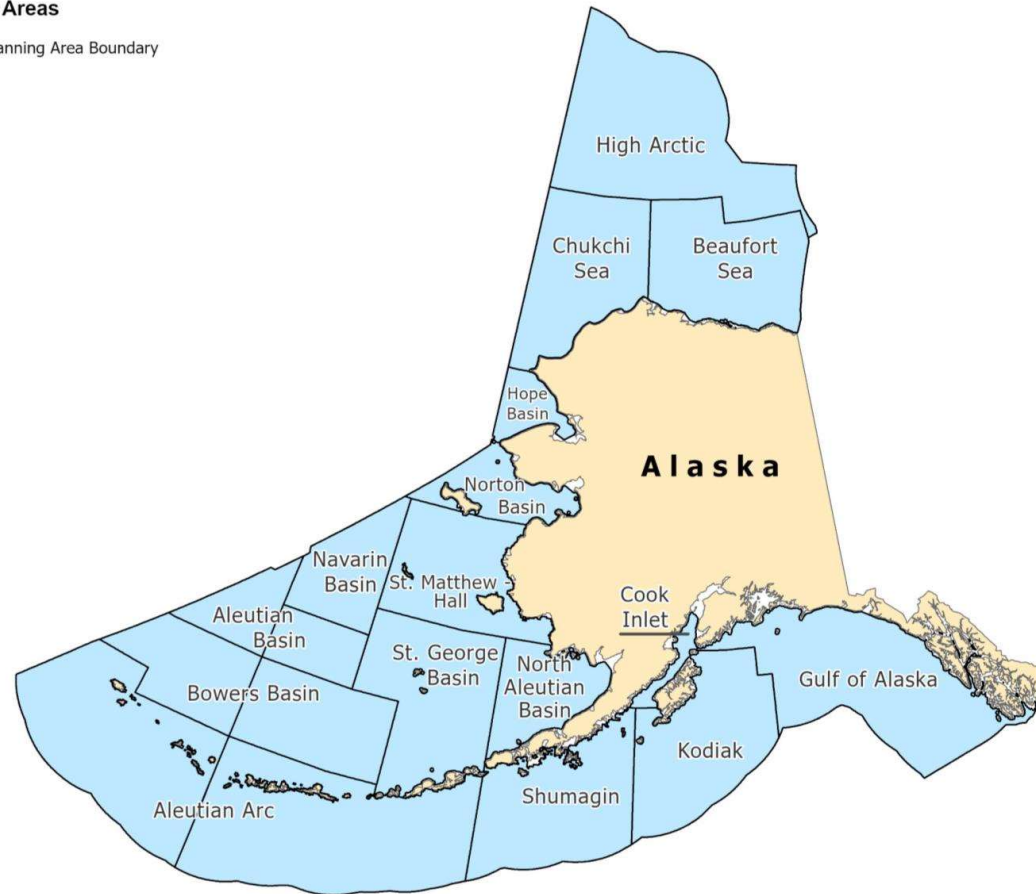
Mission Brief May 2025

Givey Kochanowski | BOEM Regional Director

Introduction

Alaska Planning Areas

 Alaska OCS Planning Area Boundary



Organization



```
graph TD; A[Office of the Regional Director] --> B[Resource Evaluation]; A --> C[Office of Environment]; A --> D[Leasing & Plans];
```

Office of the
Regional Director

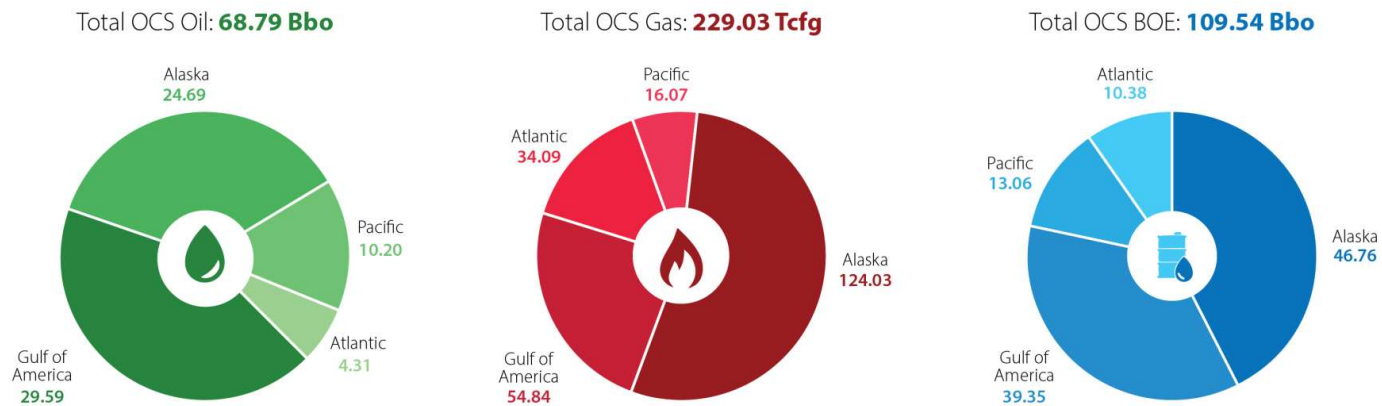
Resource
Evaluation

Office of
Environment

Leasing &
Plans

Office of Resource Evaluation

Undiscovered, technically recoverable resource volumes



BOEM's Assessment of Undiscovered Oil and Gas Resources of the Nation's Outer Continental Shelf, 2021.

Resource Analysis: Uses geologic and geophysical data to estimate energy, mineral, and geological resources

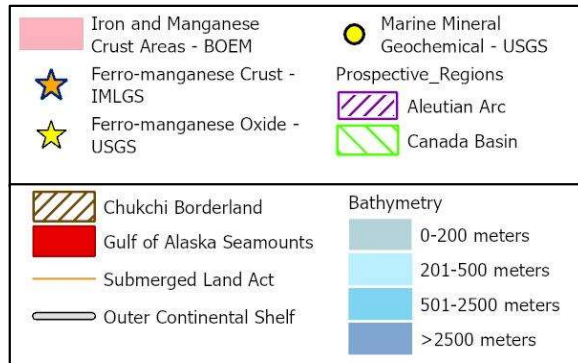
Economic Analysis: Uses energy and mineral estimates generated from Resource Analysis and applies economic modeling to estimate the monetary value of those resources



Marine Minerals

AK OCS Marine Minerals:

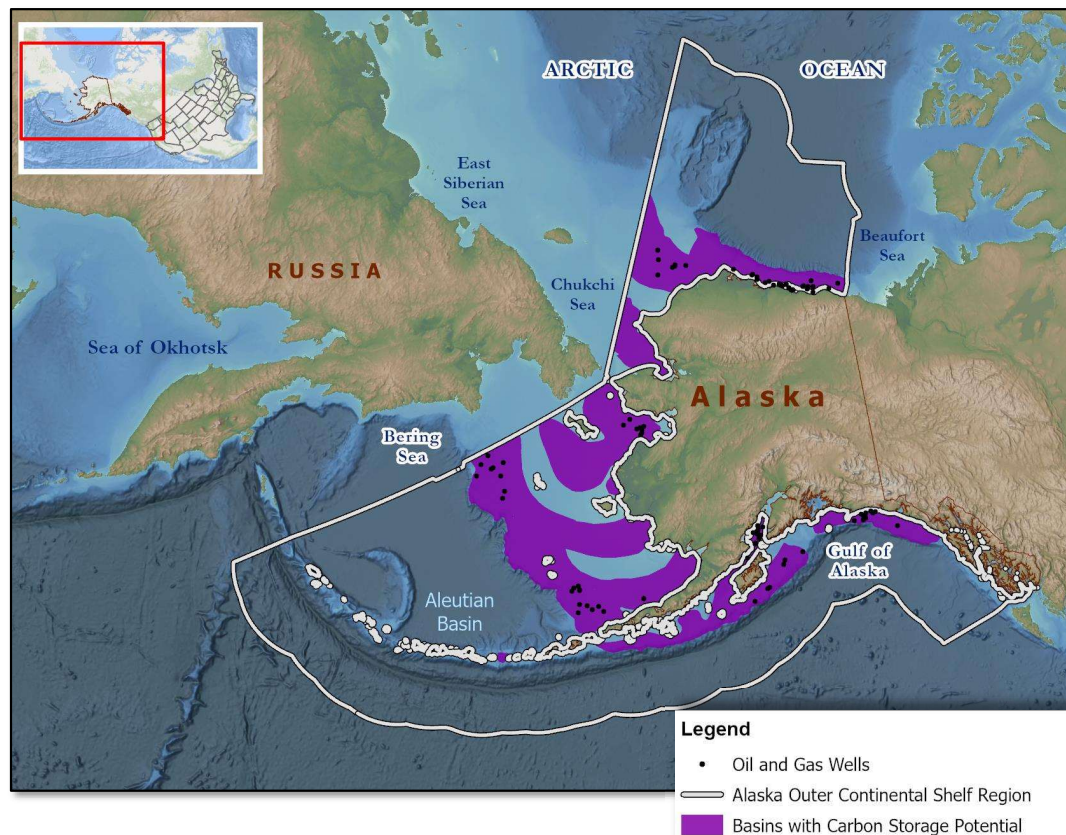
- Sand
- Gold
- Platinum
- Cobalt
- Nickel
- Manganese





Carbon Sequestration

- The Secretary of the Interior may grant a lease, easement or right-of-way to:
“provide for ... the injection of a carbon dioxide stream into sub-seabed geologic formations for the purpose of long-term carbon sequestration.”
- Rulemaking effort is currently in progress.
- Alaska is home to many sedimentary basins with promising carbon sequestration potential.

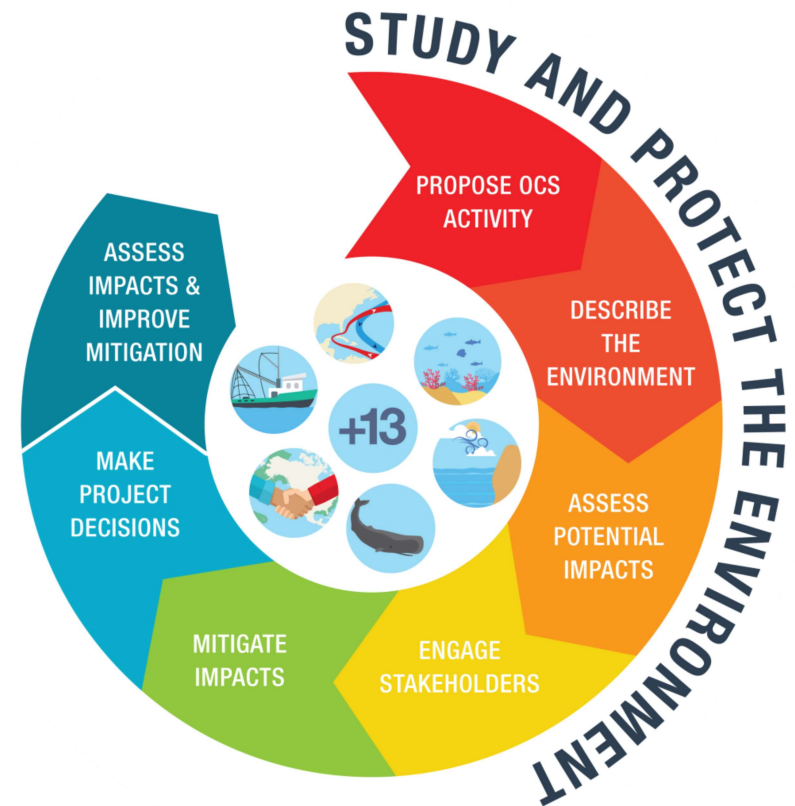




Office of Environment

Provides decisionmakers with the science to ensure offshore resource development is done safely and responsibly.

- Typically 15-20 studies active at any given time
- The "environment" includes:
 - Peoples of the land and their cultural resources
 - Marine mammals
 - Fish and invertebrates
 - Migratory birds
 - Physical oceanography
 - Climate change
 - Pollutants and contaminants
 - Cumulative effects



Office of Leasing and Plans

Leasing

If an industry operator wishes to explore for or extract oil, natural gas or other marine minerals in federal waters, it must first obtain a lease. A lease gives the operator the exclusive right to operate on an offshore block of submerged land, usually measuring 3 miles by 3 miles. Leases are obtained via a bidding process during a lease sale.

Plans

If a leaseholder wants to explore or develop resources, the leaseholder must first submit a plan describing all proposed activities to BOEM for approval. These plans are evaluated by BOEM for technical feasibility, environmental considerations, etc.

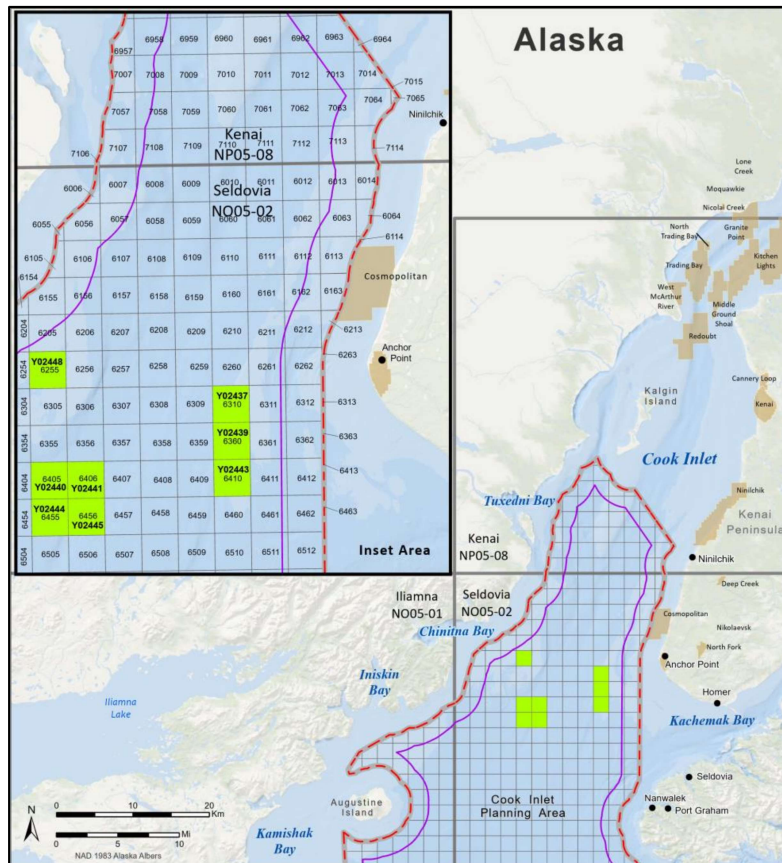


Northstar Island

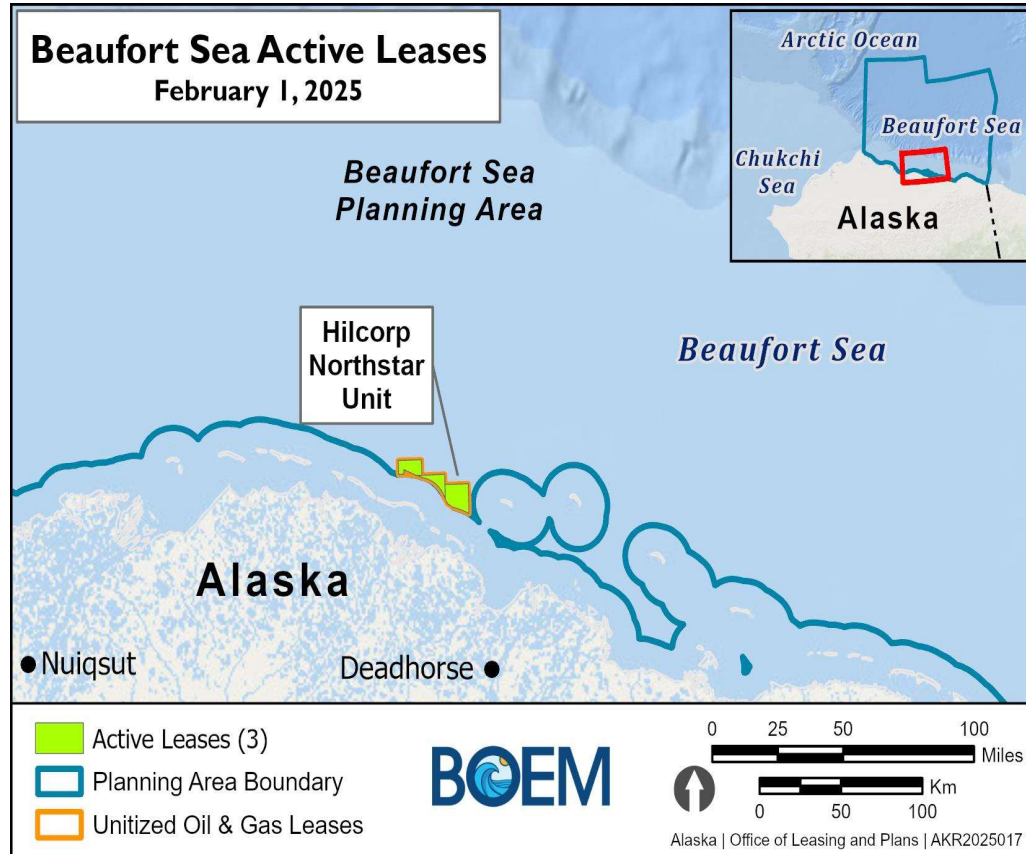


Oil & Gas

Cook Inlet 8 leases



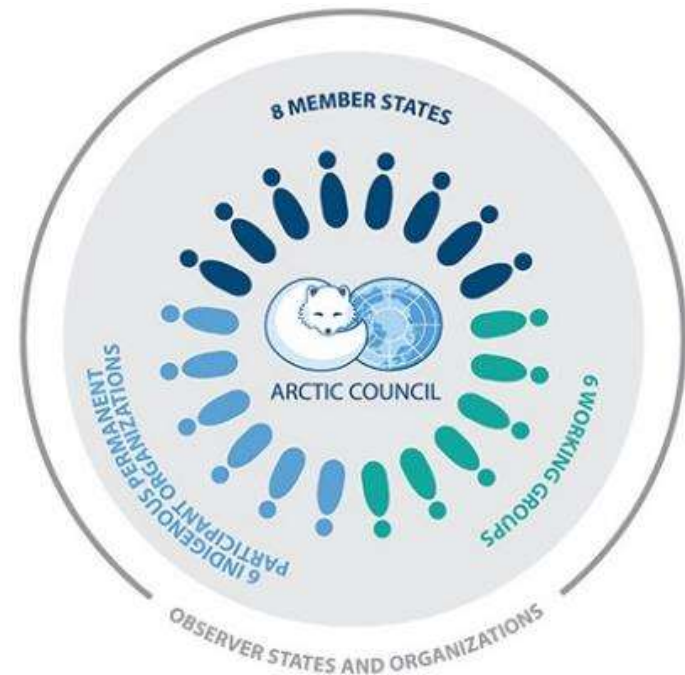
Beaufort Sea Active Leases February 1, 2025



International Activities

The Arctic Council

- The leading intergovernmental forum promoting Arctic cooperation, coordination, and interaction
- BOEM participation in Arctic Council working groups
 - Protection of the Arctic Marine Environment (PAME)
 - Resource Exploration and Development Expert Group
 - Ecosystem Approach to Management Expert Group
 - Conservation of Arctic Flora and Fauna (CAFF)
 - Circumpolar Biodiversity Monitoring Program (CBMP)
- BOEM is also seeking to grow involvement in other working groups, such as the Sustainable Development Working Group (SDWG)



Collaborations



Engagement and Outreach

Alaska Native Organizations

Transparency → Understanding → Trust

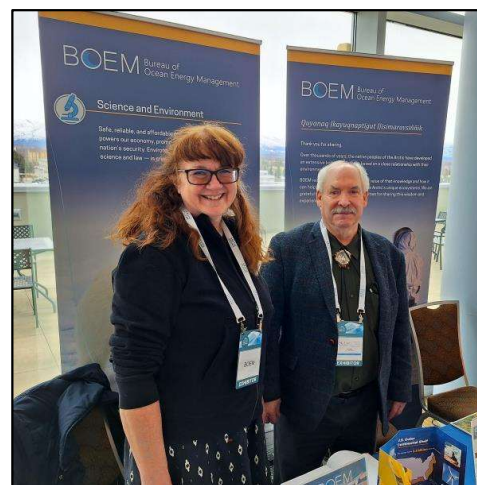
Coastal Communities

State of Alaska

Federal Agencies

Industry

NGOs



Critical Issues

- 
- 1. Lease Sale 258
remand actions**
 - 2. National OCS Oil
and Gas Program
and Alaska OCS
Lease Sales**



BOEM.gov

