

February 6, 2025

NORTH TO THE FUTURE



House Finance Subcommittee Highways & Bridges Budget Overview

Alaska Department of Transportation & Public Facilities

Dom Pannone, Director, Program Management and Administration

Leslie Daugherty, P.E., S.E., Chief Bridge Engineer, Project Delivery Division



DOT&PF REGIONAL BOUNDARIES

Northern Region

6,329 Lane Miles
42 Maintenance Stations
8 Districts

Central Region

4,163 Lane Miles
20 Maintenance Stations
4 Districts

Southcoast Region

1,555 Lane Miles
20 Maintenance Stations
2 Districts

Statewide Bridge

864 State-Owned Bridges
80 Active Bridge Projects



WIND STORM & RABBIT CREEK BRIDGE



WILLOW CREST POC, 1240

January 12, 2025: Windstorm took down roof and caging of Rabbit Creek Pedestrian Bridge (built in 1972 and rehabilitated in 2020).

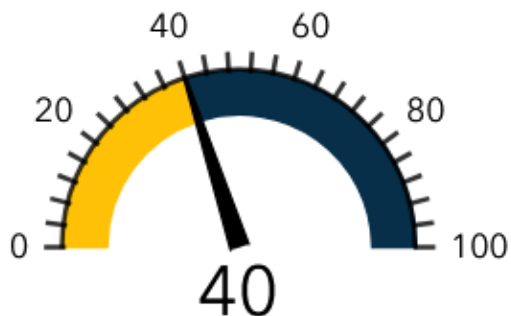
Willow Crest Pedestrian Crossing: (West Tudor in Anchorage) undergoing strengthening.

ASSET STATISTICS: BRIDGES

Performance Measures - <https://measures-akdot.hub.arcgis.com/>

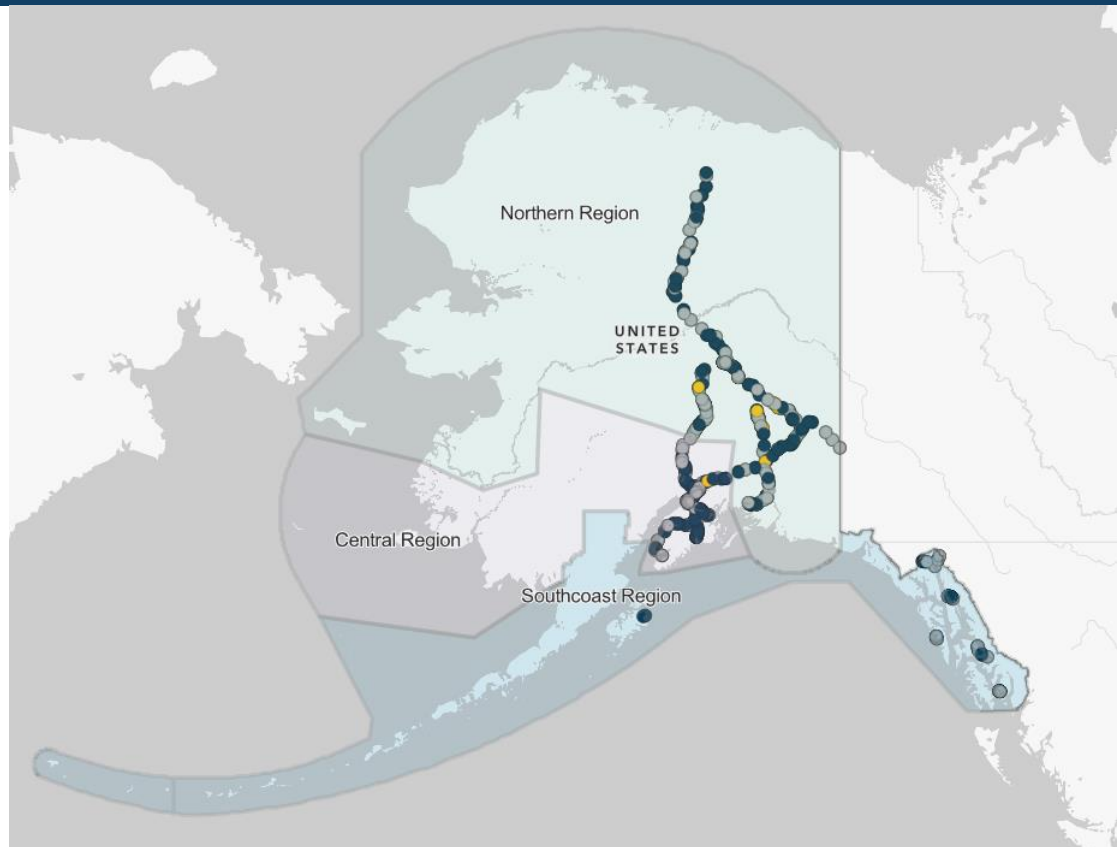
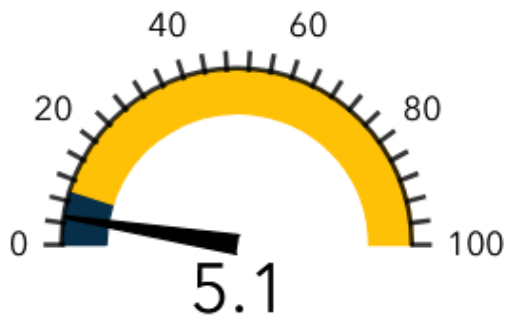
National Highway System: % Good (2024)

Target: > 40% Good Condition



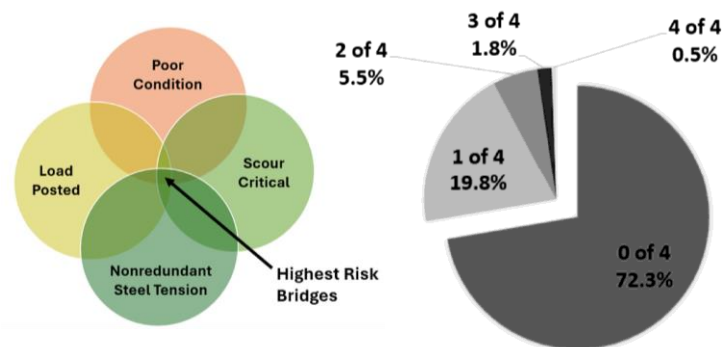
National Highway System: % Poor (2024)

Target: < 10% Poor Condition

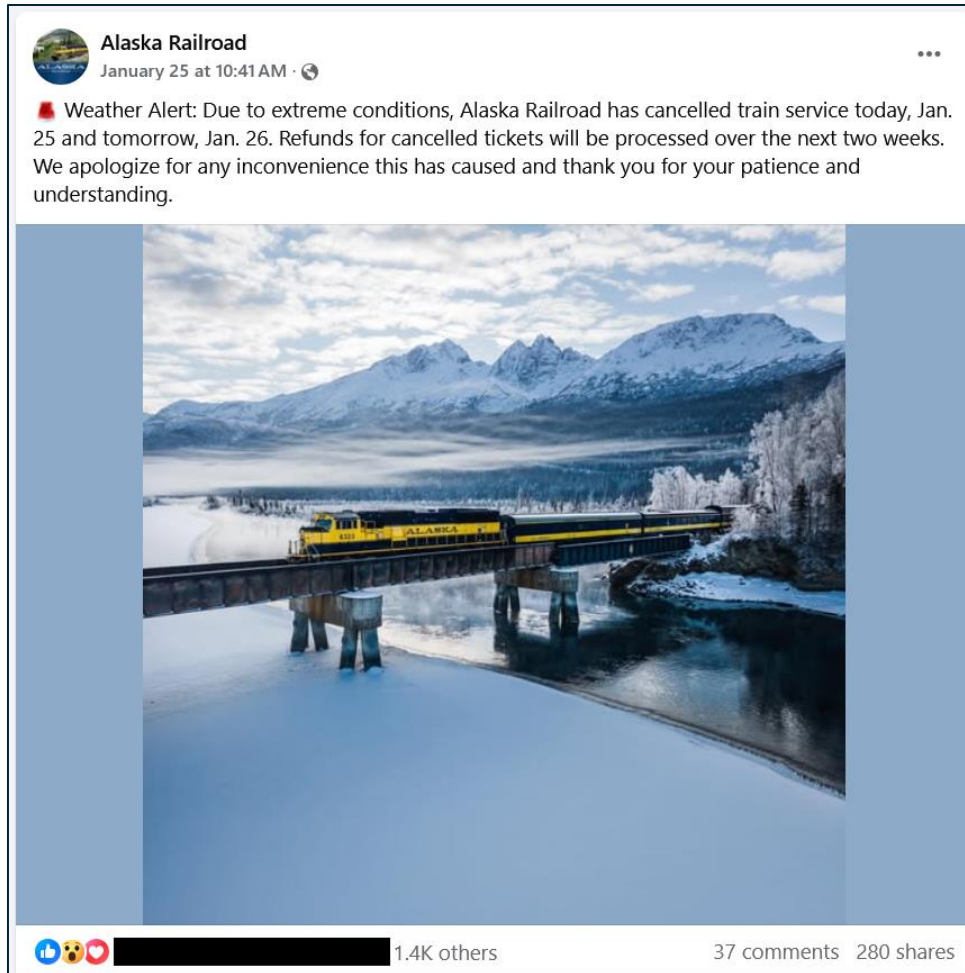


Number of Risk Factors Total Bridges

0 of 4	813
1 of 4	223
2 of 4	62
3 of 4	20
4 of 4	6



AVALANCHES, STORMS, & RAILROAD SHUTDOWN



January 25, 2025 avalanche on Parks and Richardson Highway, railroad shutdown

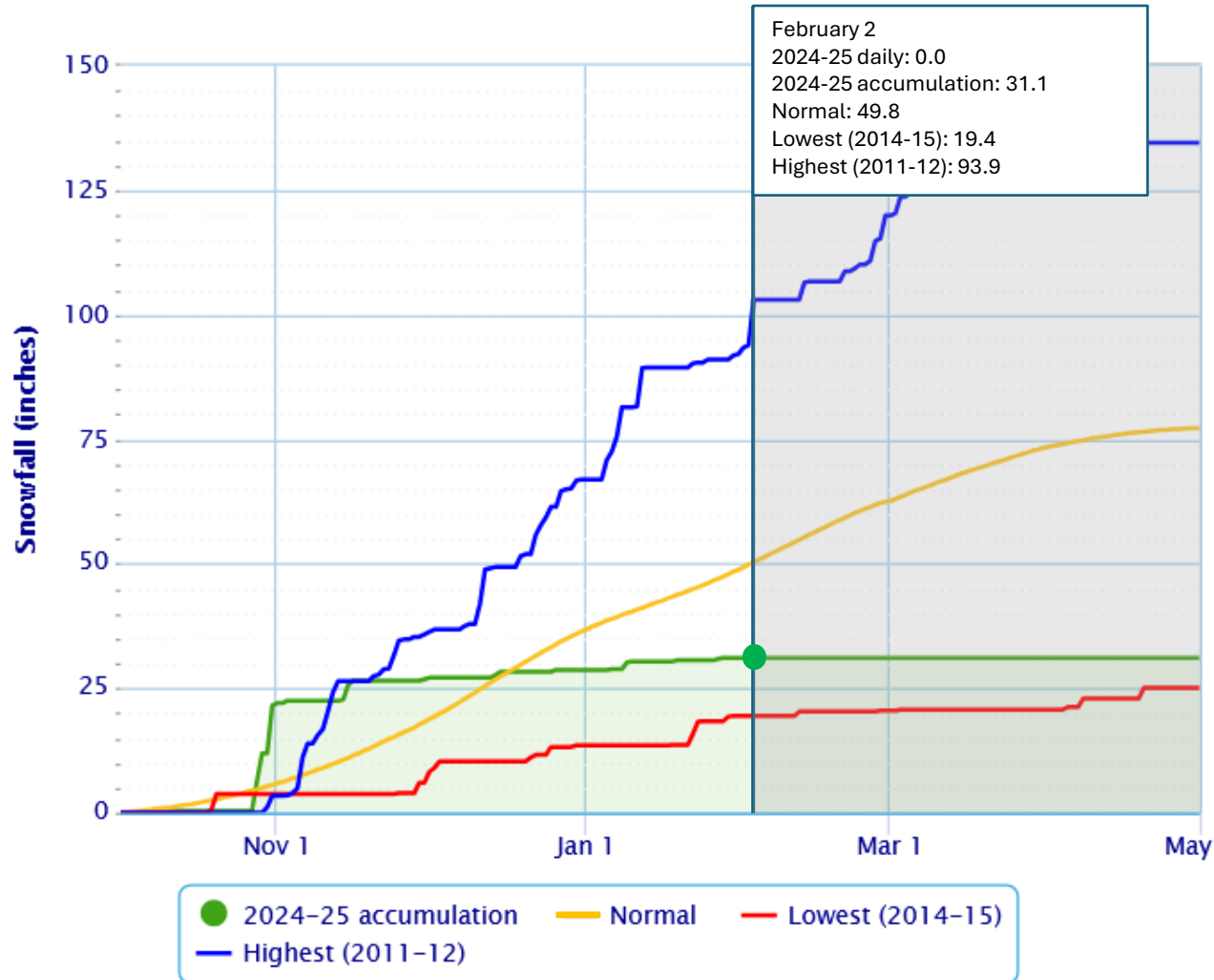
Federal Motor Safety Carrier Administration Waiver

- Governor's Emergency declaration waived Federal Motor Safety Carrier Administration hours of service restriction (15/10 rule)
- Allowed drivers to proceed north to deliver aircraft fuel, heating fuel, food and groceries, medical supplies
- Drivers were allowed to push on and make full run to destination before being required to take 10-hour break
- Without an emergency declaration, drivers could be shutdown or forced to take a 10-hour break
- Driver exceeding hours exceeding limits normally subject to maximum fine of \$200 and 3 points on Commercial Drivers License (CDL)



WINTER YEAR-TO-DATE: ANCHORAGE

Accumulated Snowfall – Anchorage Area, AK (ThreadEx)

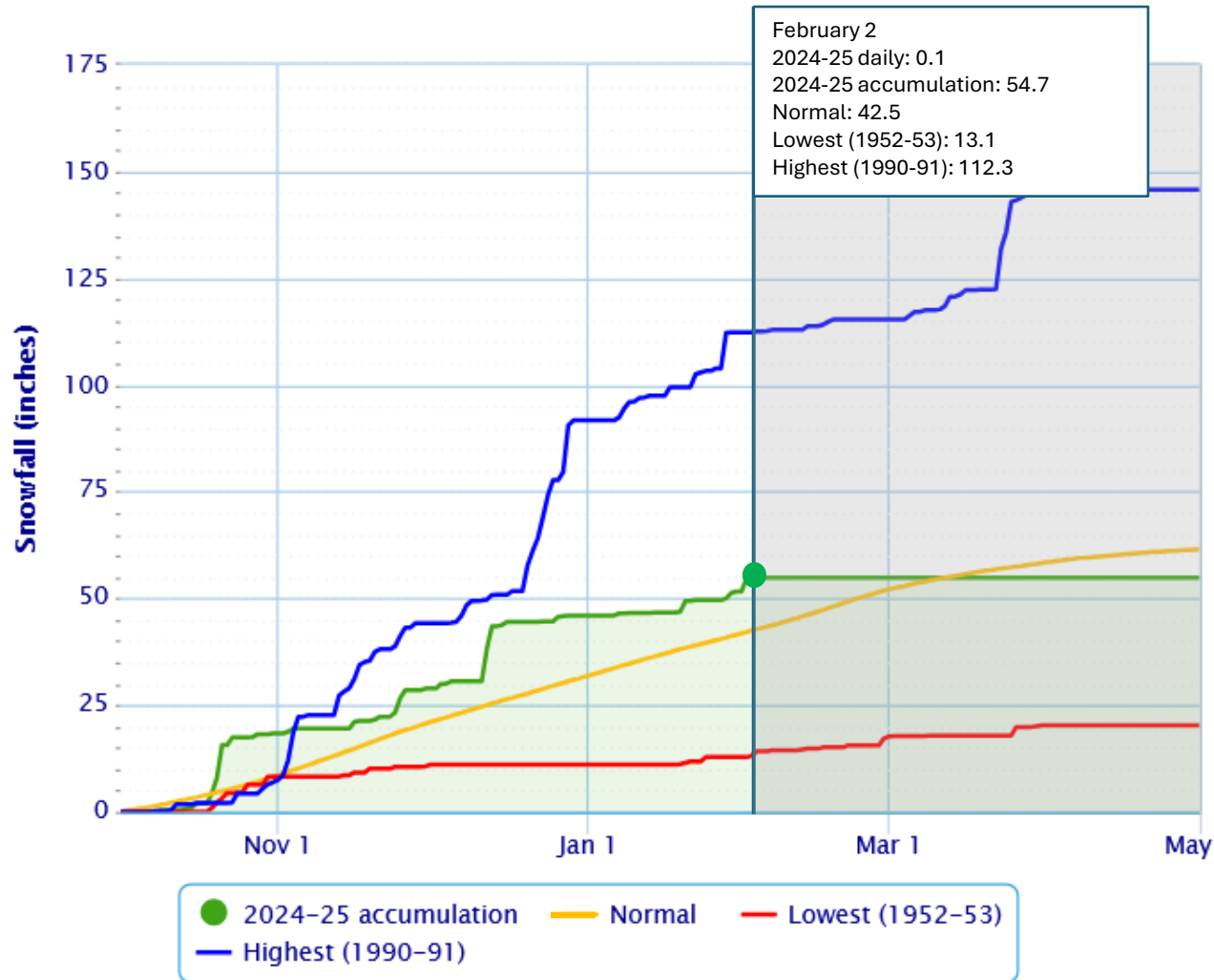


Powered by ACIS



WINTER YEAR-TO-DATE: FAIRBANKS

Accumulated Snowfall – Fairbanks Area, AK (ThreadEx)

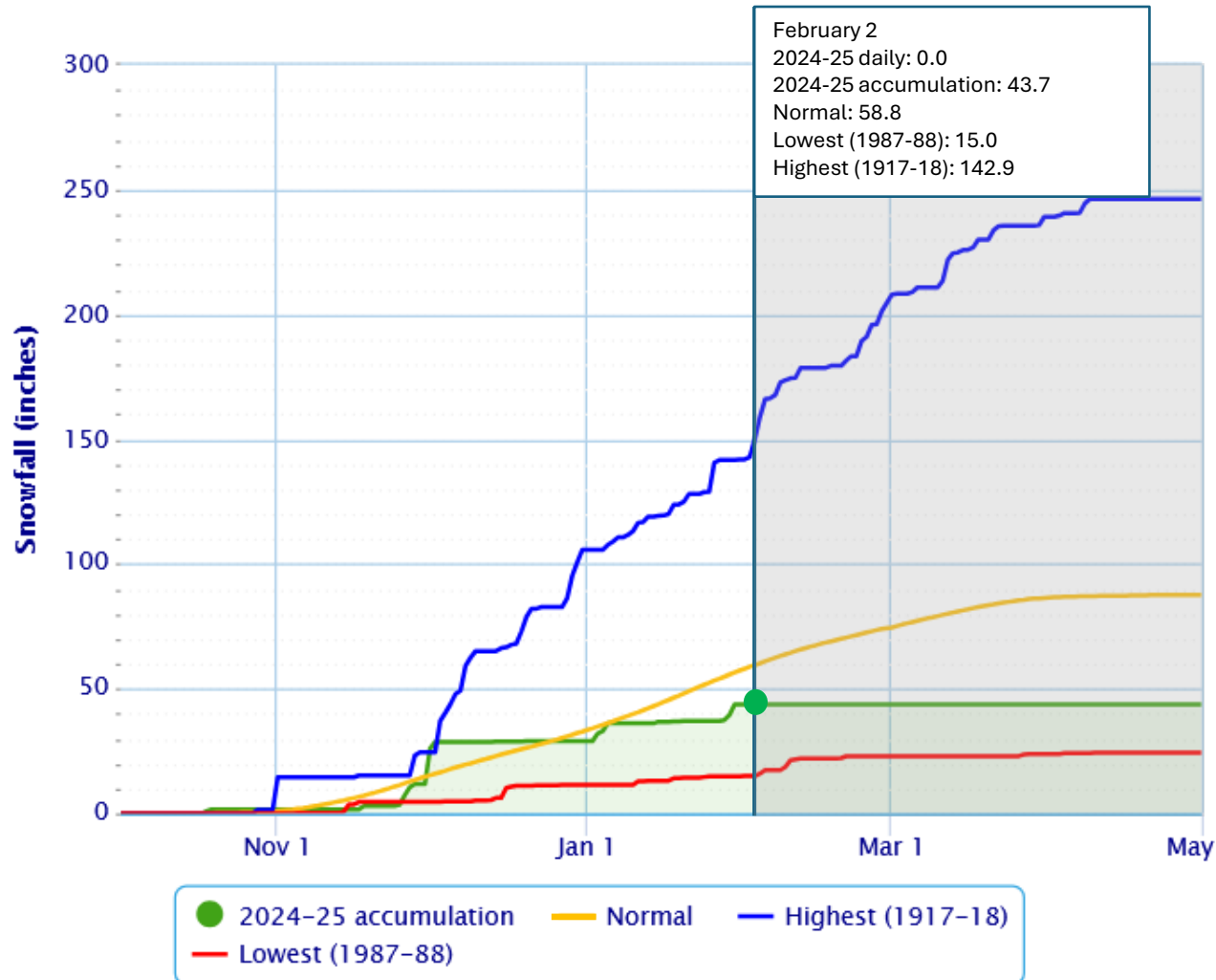


Powered by ACIS



WINTER YEAR-TO-DATE: JUNEAU

Accumulated Snowfall – Juneau Area, AK (ThreadEx)



Powered by ACIS



FY2025 HOMELESS ENCAMPMENT ABATEMENT

Serious Safety Concerns

- Rise in pedestrian fatalities
- Nearly all incidents occurred at night and outside marked crosswalks on major roadways

Expanded Partnerships

- Municipalities of Anchorage and Fairbanks
- Anchorage Police Department's Hope Team
- Airport Police, local contractors, and various nonprofits
- Alaska State Troopers

Five Encampments (Fairbanks, Anchorage, & Mat-Su Borough)

- Tudor Road
- 36th Avenue and New Seward Highway
- International Airport and Minnesota Drive Roundabout
- Gaffney Road, Airport Way, Richardson Highway, and Steese Expressway Intersection along Chena River
- Seward Meridian Parkway and Blue Lupine Drive

DOT&PF and partners prioritize transparency by issuing advance notices and work with multiple partners to uphold compassion and safety



VACANCIES

Labor Trades & Crafts, Collective Bargaining Agreement

July 1, 2024: Maintenance & Operations personnel saw a five percent increase in their wages across the board for cost of living, along with step increases for a total increase of 14.75 percent in the first year of along with additional increases based on the consumer price index (CPI) for Anchorage.

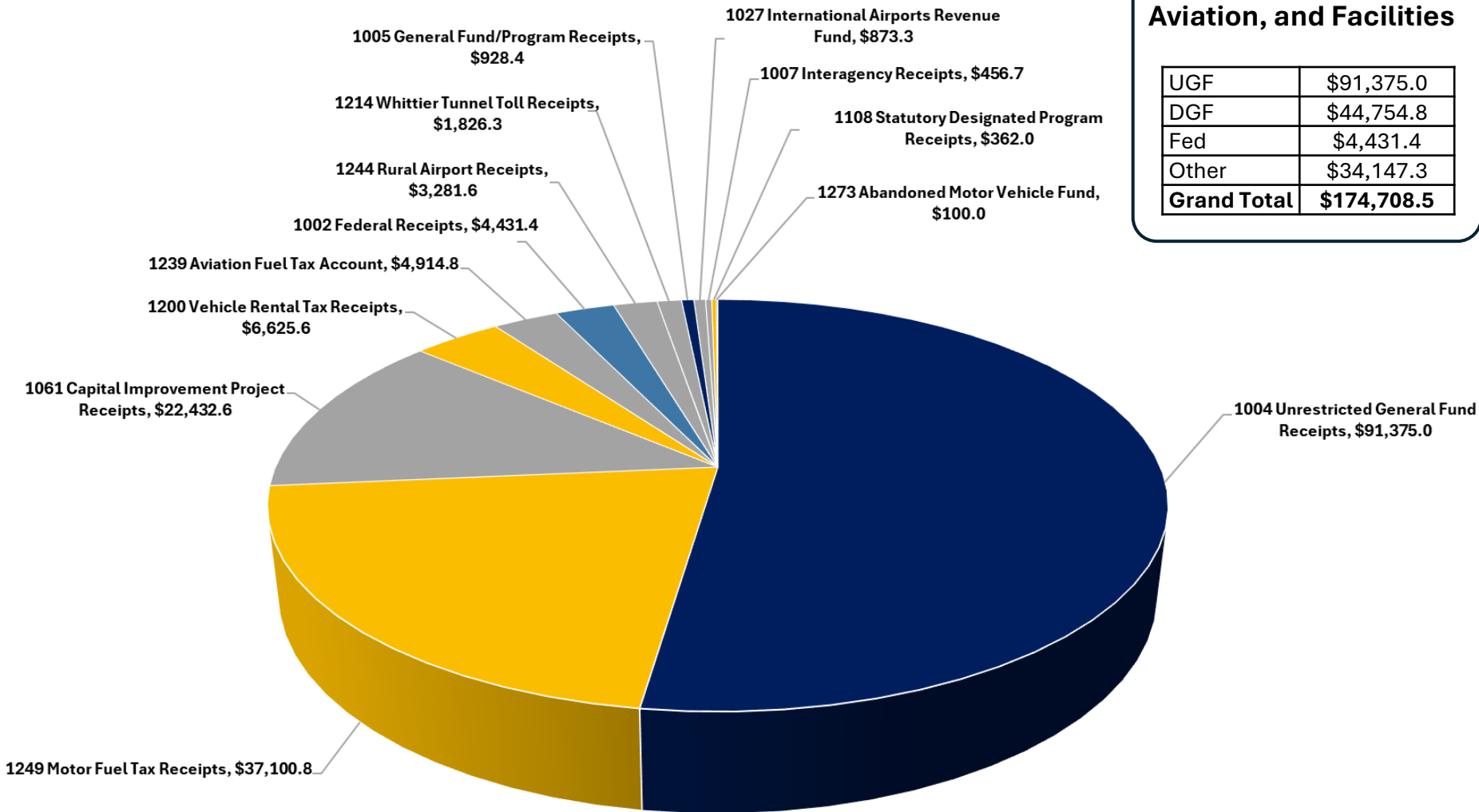
See attachment for list of Current LTC Vacancies by Region, District, Maintenance Camp



FY2026 FUND SOURCES, MAINTENANCE, AND OPERATIONS

FY2026 Highways, Aviation, and Facilities

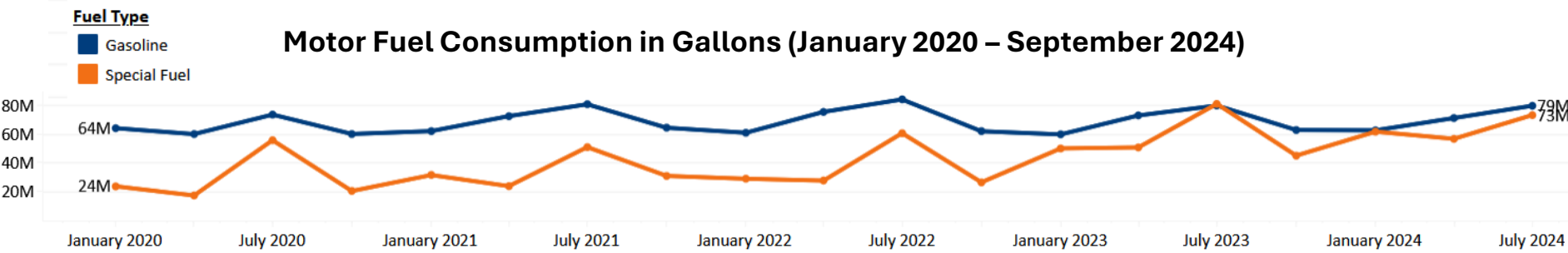
UGF	\$91,375.0
DGF	\$44,754.8
Fed	\$4,431.4
Other	\$34,147.3
Grand Total	\$174,708.5



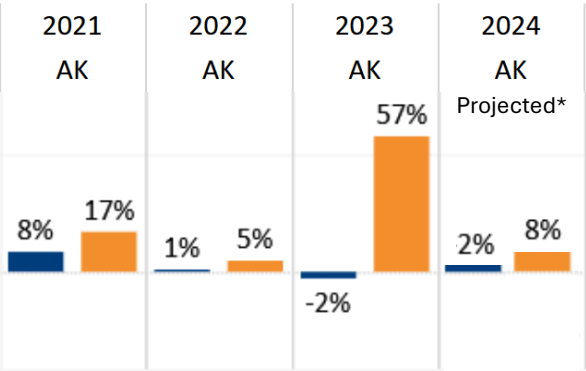
\$ in thousands



MOTOR FUEL CONSUMPTION

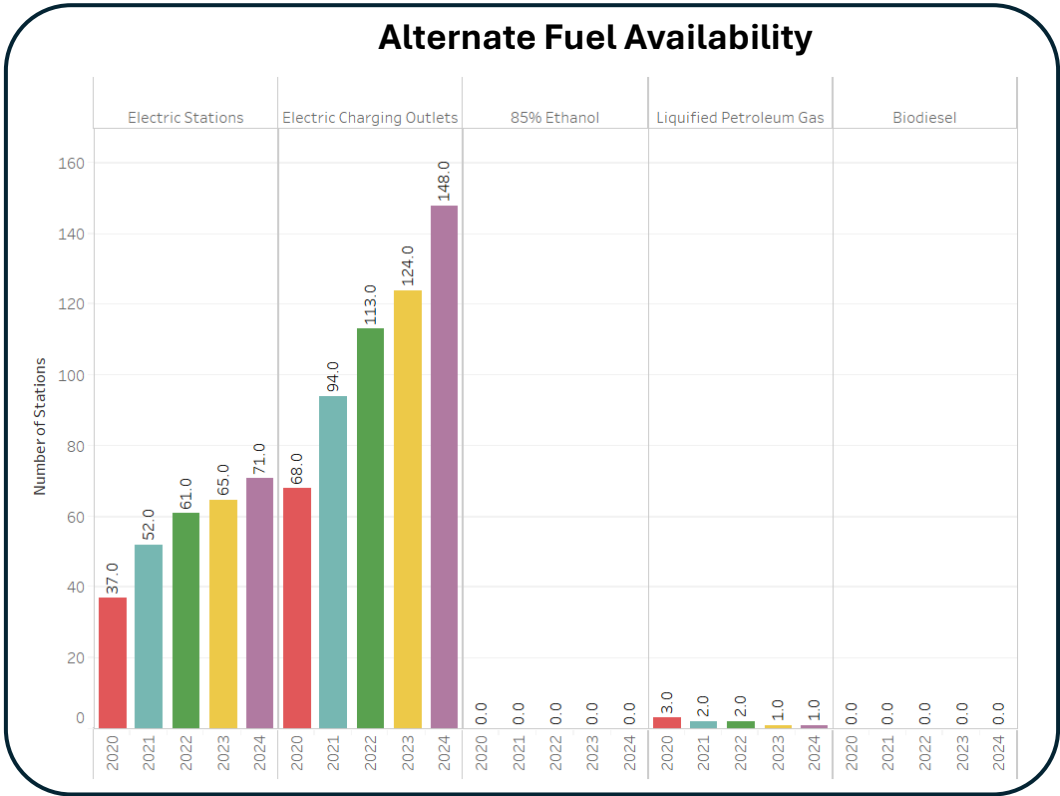


Motor Fuel Consumption Annual % Change



*2024 Q4 data not yet unavailable

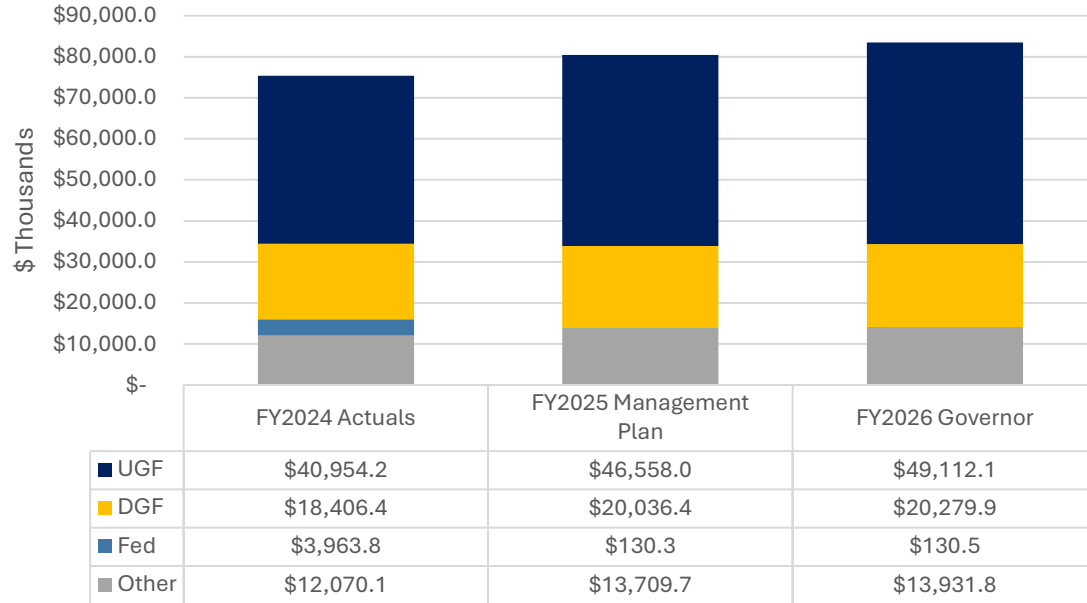
Alternate Fuel Availability



Source: **US DOT**
<https://data.transportation.gov/stories/s/nrec-wf7k>

NORTHERN REGION HIGHWAYS AND AVIATION

Operating Budget



Total FY2024 Actuals: \$75,394.5

Total FY2025 Mgmt Plan: \$80,434.4

Total FY2026 Governor: \$83,454.3

FY2026 Governor		UGF
Increment One Time Item		
Dalton Maintenance Camp Contracting		\$692.5
Roadside Hardware Repairs		\$1,000.0
Total		\$1,692.5

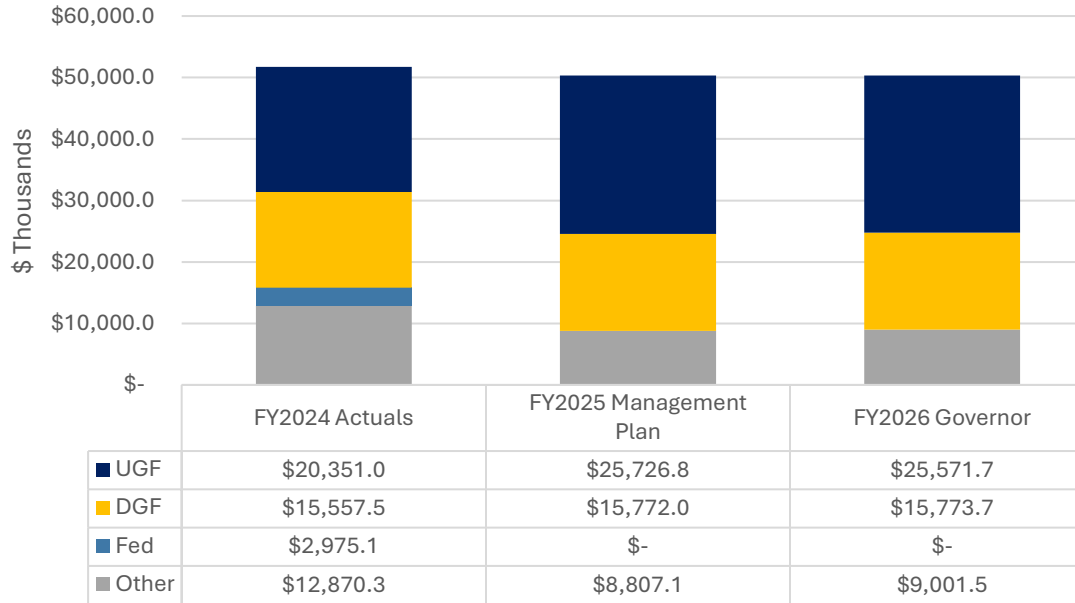
Unrestricted General Fund (UGF), Designated General Fund (DGF), Federal (Fed)

\$ in thousands



CENTRAL REGION HIGHWAYS AND AVIATION

Operating Budget



Total FY2024 Actuals: \$51,753.9

Total FY2025 Mgmt Plan: \$50,305.9

Total FY2026 Governor: \$50,346.9

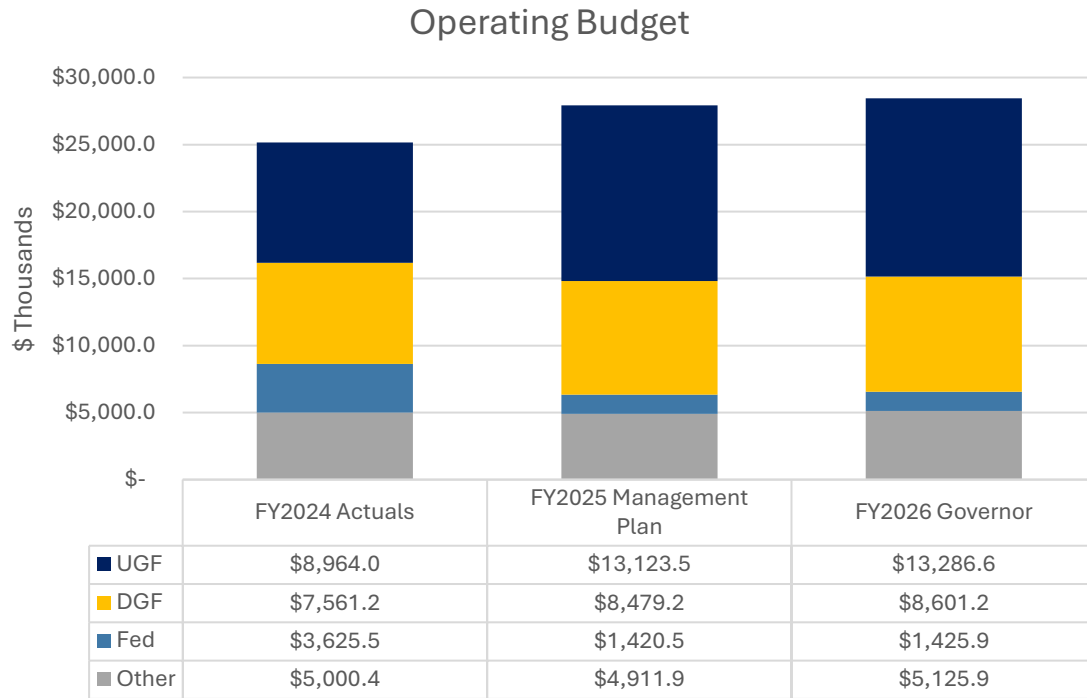
FY2026 Governor		UGF
Increment One Time Item		
Right of Way Clearing of Vacated Homeless Encampments		\$500.0
Total		\$500.0

Unrestricted General Fund (UGF), Designated General Fund (DGF), Federal (Fed)

\$ in thousands



SOUTHCOAST HIGHWAYS AND AVIATION



Total FY2024 Actuals: \$25,151.1

Total FY2025 Mgmt Plan: \$27,935.1

Total FY2026 Governor: \$28,439.6

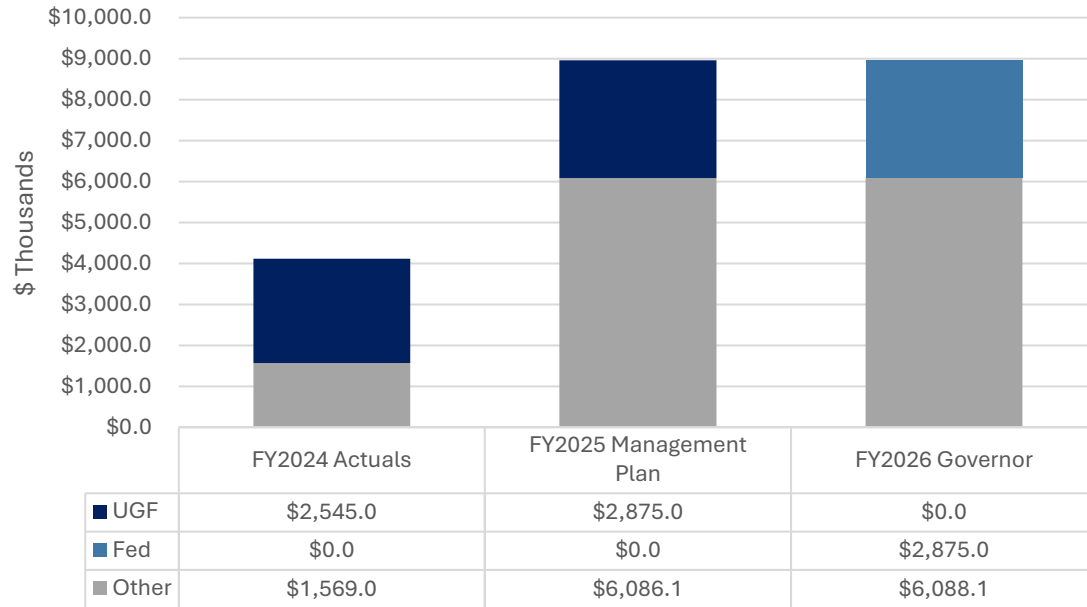
Unrestricted General Fund (UGF), Designated General Fund (DGF), Federal (Fed)

\$ in thousands



WHITTIER ACCESS AND TUNNEL

Operating Budget

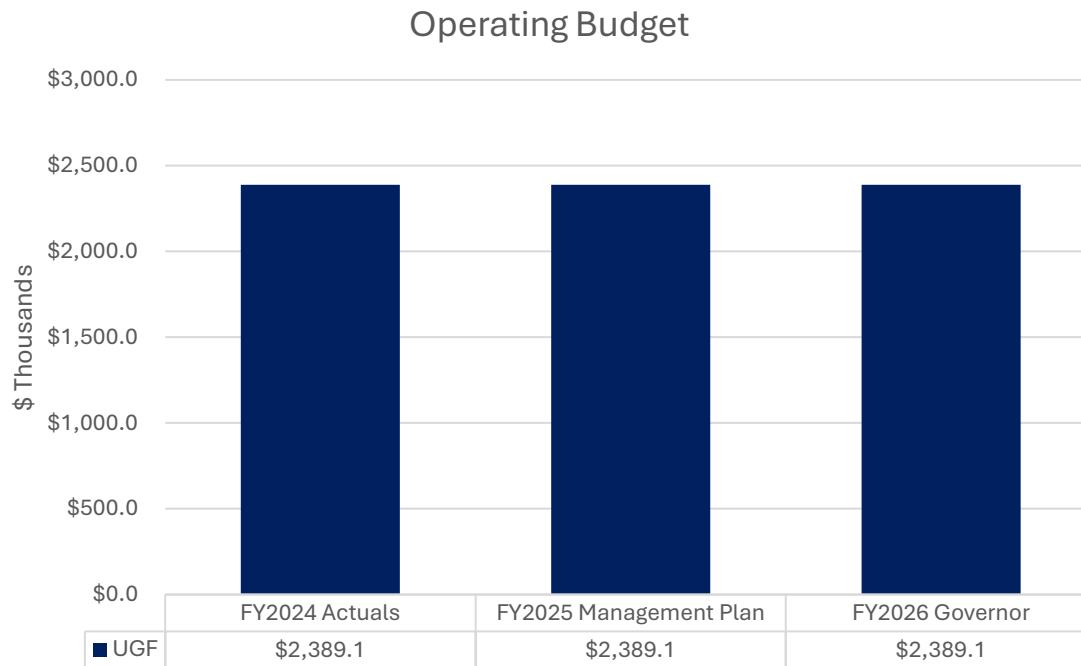


Total FY2024 Actuals: \$4,114.0 Total FY2025 Mgmt Plan: \$8,961.1 Total FY2026 Governor: \$8,963.1

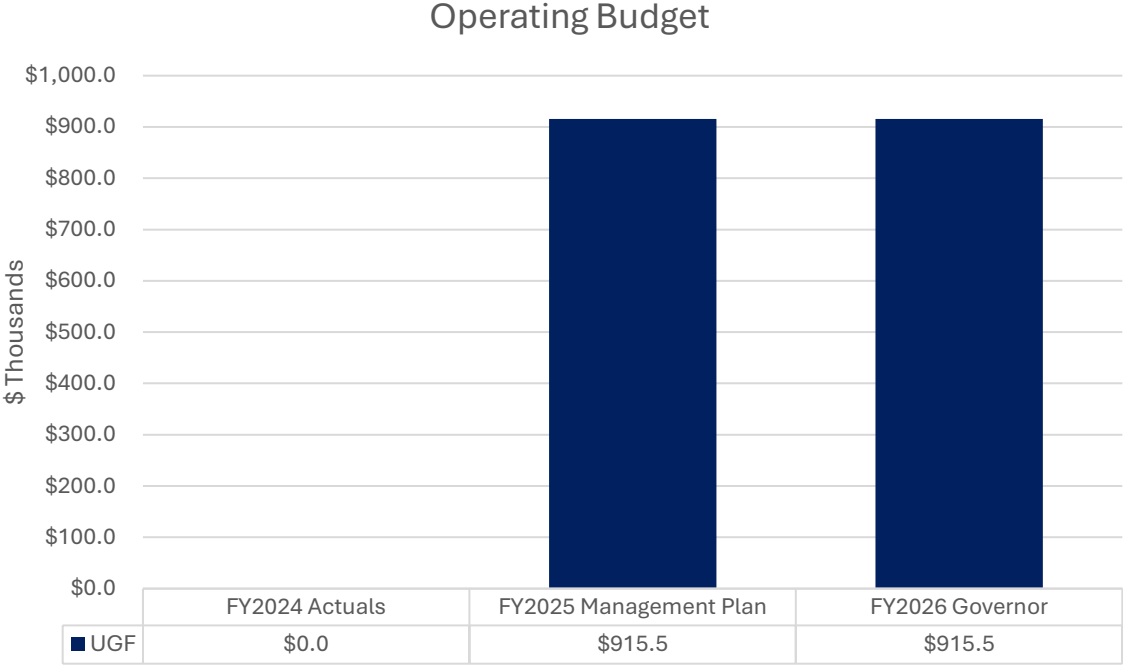
FY2026 Governor	UGF	FED
Fund Change		
Whittier Tunnel Fund Swap	(\$2,875.0)	\$2,875.0
Total	(\$2,875.0)	\$2,875.0



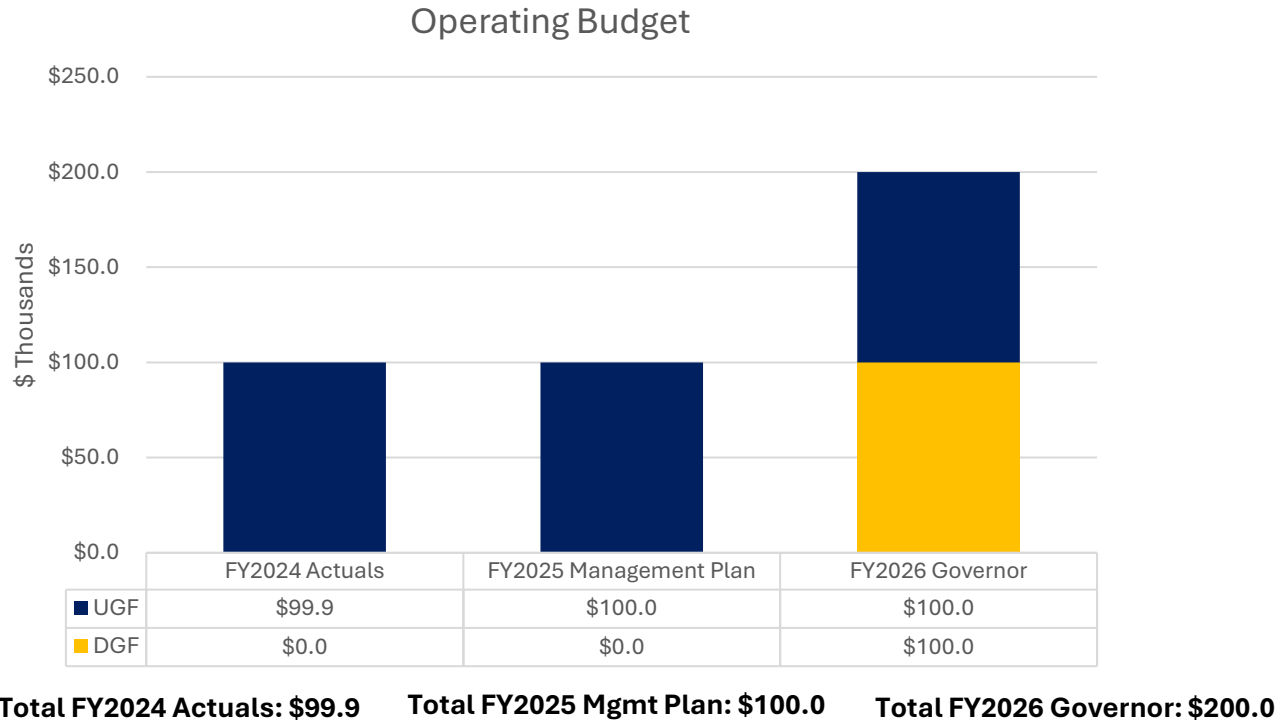
TRAFFIC SIGNAL MANAGEMENT



STATEWIDE CONTRACTED SNOW REMOVAL



ABANDONED VEHICLE REMOVAL



FY2026 Governor		DGF
Increment		
Removal of Abandoned Vehicles		\$100.0
Total		\$100.0



THANK YOU

Dom Pannone, Director, Program Management and Administration
Leslie Daugherty, P.E., S.E., Chief Bridge Engineer, Project Delivery Division

Alaska Department of Transportation & Public Facilities

DOT.Commissioner@alaska.gov

