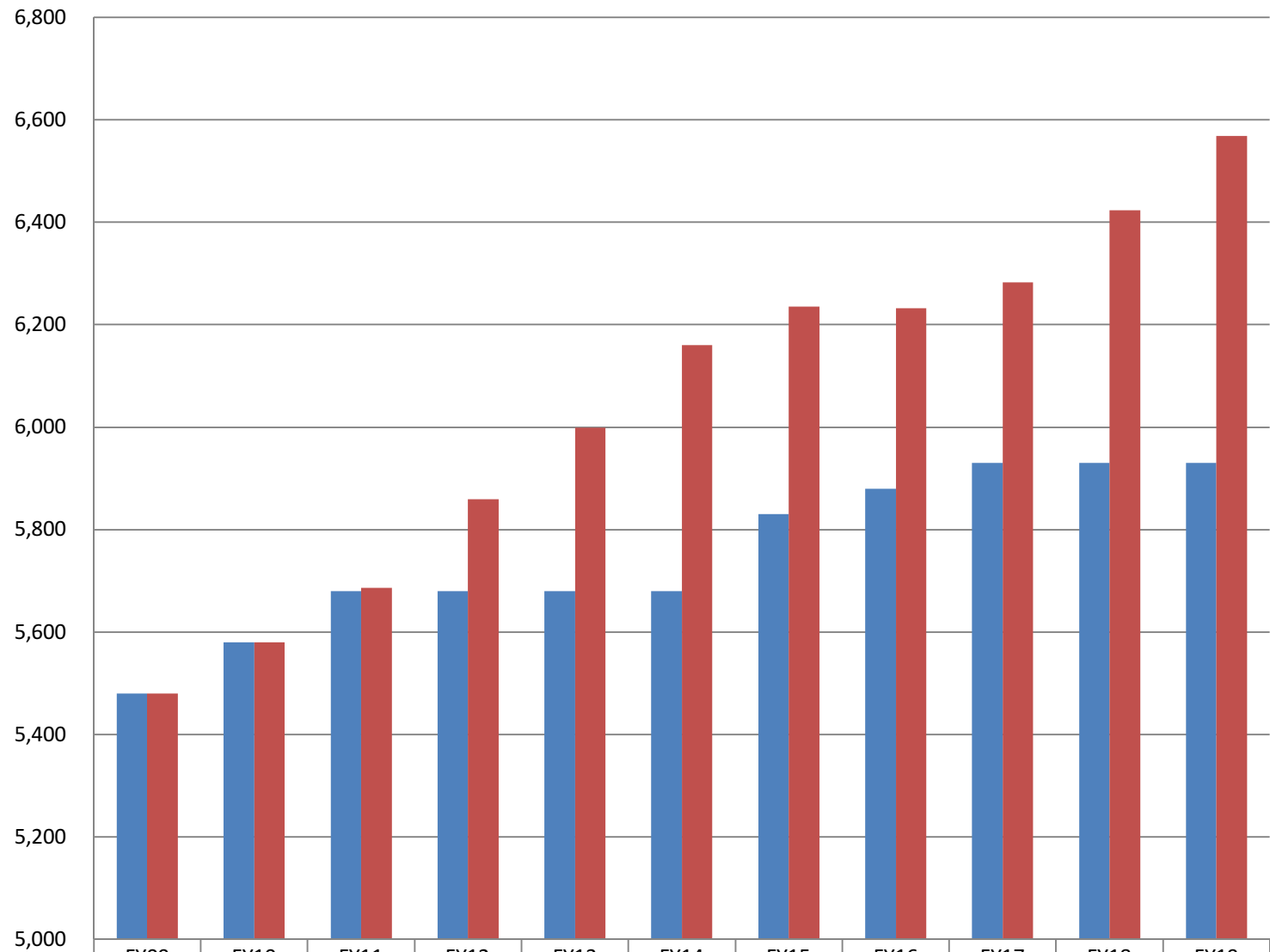


Actual BSA Versus FY09 BSA Adjusted for Inflation



■ Statutory BSA	FY09	FY10	FY11	FY12	FY13	FY14	FY15	FY16	FY17	FY18	FY19
	5,480	5,580	5,680	5,680	5,680	5,680	5,830	5,880	5,930	5,930	5,930
■ FY09 BSA adjusted for inflation	5,480	5,579	5,686	5,860	5,999	6,160	6,235	6,232	6,282	6,424	6,568