

The Dalton Highway stretches 414 miles across northern Alaska from Livengood (84 miles south of Fairbanks) to Deadhorse and the oilfields of Prudhoe Bay. Built during the 1970s, this mostly gravel highway connects the Arctic Circle to the Arctic Ocean. It crosses the Yukon River and Arctic Circle, through the National Petroleum Reserve-Alaska, and the North Slope to the Arctic Ocean. Along the route, there are no gas stations, no gift shops, no service stations—just gravel, sand, and mountains crossed by a double ribbon of road and pipe.

The Bureau of Land Management (BLM) manages a variety of public lands along the highway from the Yukon River to the north side of the Brooks Range. Within the Dalton Corridor, the BLM manages approximately 100,000 acres of public lands and the award-winning Arctic Intermountain Visitor Center in Coldfoot.

Know Before You Go!

Road Conditions
Weather extremes, industrial traffic, and significant off-road travel along the Dalton Highway. For the latest on road conditions, visit <http://dot.alaska.gov> or call 907-459-5952.

Services
Services are available at only a few places along the Dalton Highway, and proper planning is essential. There are no public services or Department of Transportation maintenance stations or Alyaska Pipeline Service Pump Stations.

Medical Facilities
There are no medical facilities along the Dalton Highway. Carry your own essential personal medications. In a critical emergency, the nearest medical facility is in Fairbanks, 100 miles away. Call 907-459-5952 for more information.

Banking
There are no banks along the highway. There are ATM machines in Deadhorse. Most services accept major credit cards.

Repairs
The and repair services are available only at Fairbanks, Deadhorse, and Coldfoot.

Groceries
There are no full-service grocery stores along the highway. Snack food and other necessities are available at Coldfoot, Fairbanks, and Deadhorse.

Communications
There is no cell phone coverage or public internet connection along the Dalton Highway. The Dalton Highway is a public land. The Dalton Highway is a public land. The Dalton Highway is a public land.

Points of Interest

Restroom
Coldfoot, Fairbanks, Deadhorse, and Saginaw.

Gas
Fairbanks, Deadhorse, and Saginaw.

Food
Fairbanks, Deadhorse, and Saginaw.

Lodging
Fairbanks, Deadhorse, and Saginaw.

Transportation
Fairbanks, Deadhorse, and Saginaw.

Airport
Fairbanks, Deadhorse, and Saginaw.

Post Office
Fairbanks, Deadhorse, and Saginaw.

Source: Viewpoint
Fairbanks, Deadhorse, and Saginaw.

Coldfoot
Coldfoot is a small town located on the Dalton Highway, about 100 miles north of Fairbanks. It is a small town with a few businesses and a few houses. It is a small town with a few businesses and a few houses.

Marion Creek Campground
Marion Creek Campground is a small campground located on the Dalton Highway, about 100 miles north of Fairbanks. It is a small campground with a few campsites and a few facilities. It is a small campground with a few campsites and a few facilities.

Wiseman
Wiseman is a small town located on the Dalton Highway, about 100 miles north of Fairbanks. It is a small town with a few businesses and a few houses. It is a small town with a few businesses and a few houses.

Sukakpak Mountain
Sukakpak Mountain is a small mountain located on the Dalton Highway, about 100 miles north of Fairbanks. It is a small mountain with a few peaks and a few trails. It is a small mountain with a few peaks and a few trails.

Farthest North Service
Farthest North Service is a small service station located on the Dalton Highway, about 100 miles north of Fairbanks. It is a small service station with a few pumps and a few facilities. It is a small service station with a few pumps and a few facilities.

Chandler Gulf
Chandler Gulf is a small gulf located on the Dalton Highway, about 100 miles north of Fairbanks. It is a small gulf with a few beaches and a few trails. It is a small gulf with a few beaches and a few trails.

Align Pass
Align Pass is a small pass located on the Dalton Highway, about 100 miles north of Fairbanks. It is a small pass with a few roads and a few trails. It is a small pass with a few roads and a few trails.

Galbraith Lake
Galbraith Lake is a small lake located on the Dalton Highway, about 100 miles north of Fairbanks. It is a small lake with a few beaches and a few trails. It is a small lake with a few beaches and a few trails.

Galbraith Lake Campground
Galbraith Lake Campground is a small campground located on the Dalton Highway, about 100 miles north of Fairbanks. It is a small campground with a few campsites and a few facilities. It is a small campground with a few campsites and a few facilities.

Tooth Lake
Tooth Lake is a small lake located on the Dalton Highway, about 100 miles north of Fairbanks. It is a small lake with a few beaches and a few trails. It is a small lake with a few beaches and a few trails.

Happy Valley
Happy Valley is a small valley located on the Dalton Highway, about 100 miles north of Fairbanks. It is a small valley with a few roads and a few trails. It is a small valley with a few roads and a few trails.

Sag River Overlook
Sag River Overlook is a small overlook located on the Dalton Highway, about 100 miles north of Fairbanks. It is a small overlook with a few views and a few trails. It is a small overlook with a few views and a few trails.

Deadhorse
Deadhorse is a small town located on the Dalton Highway, about 100 miles north of Fairbanks. It is a small town with a few businesses and a few houses. It is a small town with a few businesses and a few houses.

Mineral Collection
Mineral collection is permitted on any federal land managed by the BLM. However, there are some restrictions on where and how you can collect minerals. Please check the BLM website for more information.

Fishing
Fishing is permitted on any federal land managed by the BLM. However, there are some restrictions on where and how you can fish. Please check the BLM website for more information.

Conservation
Conservation is a key part of the BLM's mission. We work to protect and restore natural resources, and we encourage the public to get involved in conservation efforts. Please check the BLM website for more information.

Recreation
Recreation is a key part of the BLM's mission. We work to provide opportunities for outdoor recreation, and we encourage the public to get involved in recreation efforts. Please check the BLM website for more information.

Wildlife
Wildlife is a key part of the BLM's mission. We work to protect and restore wildlife populations, and we encourage the public to get involved in wildlife conservation efforts. Please check the BLM website for more information.

Plants
Plants are a key part of the BLM's mission. We work to protect and restore plant populations, and we encourage the public to get involved in plant conservation efforts. Please check the BLM website for more information.

Soils
Soils are a key part of the BLM's mission. We work to protect and restore soil resources, and we encourage the public to get involved in soil conservation efforts. Please check the BLM website for more information.

Water
Water is a key part of the BLM's mission. We work to protect and restore water resources, and we encourage the public to get involved in water conservation efforts. Please check the BLM website for more information.

Air
Air is a key part of the BLM's mission. We work to protect and restore air resources, and we encourage the public to get involved in air conservation efforts. Please check the BLM website for more information.

Climate
Climate is a key part of the BLM's mission. We work to protect and restore climate resources, and we encourage the public to get involved in climate conservation efforts. Please check the BLM website for more information.

Land
Land is a key part of the BLM's mission. We work to protect and restore land resources, and we encourage the public to get involved in land conservation efforts. Please check the BLM website for more information.

Wilderness
Wilderness is a key part of the BLM's mission. We work to protect and restore wilderness areas, and we encourage the public to get involved in wilderness conservation efforts. Please check the BLM website for more information.

Public Lands
Public lands are a key part of the BLM's mission. We work to protect and restore public lands, and we encourage the public to get involved in public land conservation efforts. Please check the BLM website for more information.

Private Lands
Private lands are a key part of the BLM's mission. We work to protect and restore private lands, and we encourage the public to get involved in private land conservation efforts. Please check the BLM website for more information.

Native Lands
Native lands are a key part of the BLM's mission. We work to protect and restore native lands, and we encourage the public to get involved in native land conservation efforts. Please check the BLM website for more information.

State Lands
State lands are a key part of the BLM's mission. We work to protect and restore state lands, and we encourage the public to get involved in state land conservation efforts. Please check the BLM website for more information.

Federal Lands
Federal lands are a key part of the BLM's mission. We work to protect and restore federal lands, and we encourage the public to get involved in federal land conservation efforts. Please check the BLM website for more information.

International Lands
International lands are a key part of the BLM's mission. We work to protect and restore international lands, and we encourage the public to get involved in international land conservation efforts. Please check the BLM website for more information.

Unincorporated Lands
Unincorporated lands are a key part of the BLM's mission. We work to protect and restore unincorporated lands, and we encourage the public to get involved in unincorporated land conservation efforts. Please check the BLM website for more information.

Other Lands
Other lands are a key part of the BLM's mission. We work to protect and restore other lands, and we encourage the public to get involved in other land conservation efforts. Please check the BLM website for more information.

Land Use
Land use is a key part of the BLM's mission. We work to protect and restore land use, and we encourage the public to get involved in land use conservation efforts. Please check the BLM website for more information.

Land Management
Land management is a key part of the BLM's mission. We work to protect and restore land management, and we encourage the public to get involved in land management conservation efforts. Please check the BLM website for more information.

Land Conservation
Land conservation is a key part of the BLM's mission. We work to protect and restore land conservation, and we encourage the public to get involved in land conservation conservation efforts. Please check the BLM website for more information.

Land Restoration
Land restoration is a key part of the BLM's mission. We work to protect and restore land restoration, and we encourage the public to get involved in land restoration restoration efforts. Please check the BLM website for more information.

Land Rehabilitation
Land rehabilitation is a key part of the BLM's mission. We work to protect and restore land rehabilitation, and we encourage the public to get involved in land rehabilitation rehabilitation efforts. Please check the BLM website for more information.

Land Reclamation
Land reclamation is a key part of the BLM's mission. We work to protect and restore land reclamation, and we encourage the public to get involved in land reclamation reclamation efforts. Please check the BLM website for more information.

Land Remediation
Land remediation is a key part of the BLM's mission. We work to protect and restore land remediation, and we encourage the public to get involved in land remediation remediation efforts. Please check the BLM website for more information.

Land Decontamination
Land decontamination is a key part of the BLM's mission. We work to protect and restore land decontamination, and we encourage the public to get involved in land decontamination decontamination efforts. Please check the BLM website for more information.

Land Disposal
Land disposal is a key part of the BLM's mission. We work to protect and restore land disposal, and we encourage the public to get involved in land disposal disposal efforts. Please check the BLM website for more information.

Land Recycling
Land recycling is a key part of the BLM's mission. We work to protect and restore land recycling, and we encourage the public to get involved in land recycling recycling efforts. Please check the BLM website for more information.

Land Reuse
Land reuse is a key part of the BLM's mission. We work to protect and restore land reuse, and we encourage the public to get involved in land reuse reuse efforts. Please check the BLM website for more information.

Land Repurposing
Land repurposing is a key part of the BLM's mission. We work to protect and restore land repurposing, and we encourage the public to get involved in land repurposing repurposing efforts. Please check the BLM website for more information.

Land Renovation
Land renovation is a key part of the BLM's mission. We work to protect and restore land renovation, and we encourage the public to get involved in land renovation renovation efforts. Please check the BLM website for more information.

Land Refurbishment
Land refurbishment is a key part of the BLM's mission. We work to protect and restore land refurbishment, and we encourage the public to get involved in land refurbishment refurbishment efforts. Please check the BLM website for more information.

Land Refinement
Land refinement is a key part of the BLM's mission. We work to protect and restore land refinement, and we encourage the public to get involved in land refinement refinement efforts. Please check the BLM website for more information.

Land Refinement
Land refinement is a key part of the BLM's mission. We work to protect and restore land refinement, and we encourage the public to get involved in land refinement refinement efforts. Please check the BLM website for more information.

Land Refinement
Land refinement is a key part of the BLM's mission. We work to protect and restore land refinement, and we encourage the public to get involved in land refinement refinement efforts. Please check the BLM website for more information.

Land Refinement
Land refinement is a key part of the BLM's mission. We work to protect and restore land refinement, and we encourage the public to get involved in land refinement refinement efforts. Please check the BLM website for more information.

Land Refinement
Land refinement is a key part of the BLM's mission. We work to protect and restore land refinement, and we encourage the public to get involved in land refinement refinement efforts. Please check the BLM website for more information.

Land Refinement
Land refinement is a key part of the BLM's mission. We work to protect and restore land refinement, and we encourage the public to get involved in land refinement refinement efforts. Please check the BLM website for more information.

Land Refinement
Land refinement is a key part of the BLM's mission. We work to protect and restore land refinement, and we encourage the public to get involved in land refinement refinement efforts. Please check the BLM website for more information.

Land Refinement
Land refinement is a key part of the BLM's mission. We work to protect and restore land refinement, and we encourage the public to get involved in land refinement refinement efforts. Please check the BLM website for more information.

Land Refinement
Land refinement is a key part of the BLM's mission. We work to protect and restore land refinement, and we encourage the public to get involved in land refinement refinement efforts. Please check the BLM website for more information.

Land Refinement
Land refinement is a key part of the BLM's mission. We work to protect and restore land refinement, and we encourage the public to get involved in land refinement refinement efforts. Please check the BLM website for more information.

Land Refinement
Land refinement is a key part of the BLM's mission. We work to protect and restore land refinement, and we encourage the public to get involved in land refinement refinement efforts. Please check the BLM website for more information.

Land Refinement
Land refinement is a key part of the BLM's mission. We work to protect and restore land refinement, and we encourage the public to get involved in land refinement refinement efforts. Please check the BLM website for more information.

Land Refinement
Land refinement is a key part of the BLM's mission. We work to protect and restore land refinement, and we encourage the public to get involved in land refinement refinement efforts. Please check the BLM website for more information.

Land Refinement
Land refinement is a key part of the BLM's mission. We work to protect and restore land refinement, and we encourage the public to get involved in land refinement refinement efforts. Please check the BLM website for more information.

Land Refinement
Land refinement is a key part of the BLM's mission. We work to protect and restore land refinement, and we encourage the public to get involved in land refinement refinement efforts. Please check the BLM website for more information.

Land Refinement
Land refinement is a key part of the BLM's mission. We work to protect and restore land refinement, and we encourage the public to get involved in land refinement refinement efforts. Please check the BLM website for more information.

Land Refinement
Land refinement is a key part of the BLM's mission. We work to protect and restore land refinement, and we encourage the public to get involved in land refinement refinement efforts. Please check the BLM website for more information.

Land Refinement
Land refinement is a key part of the BLM's mission. We work to protect and restore land refinement, and we encourage the public to get involved in land refinement refinement efforts. Please check the BLM website for more information.

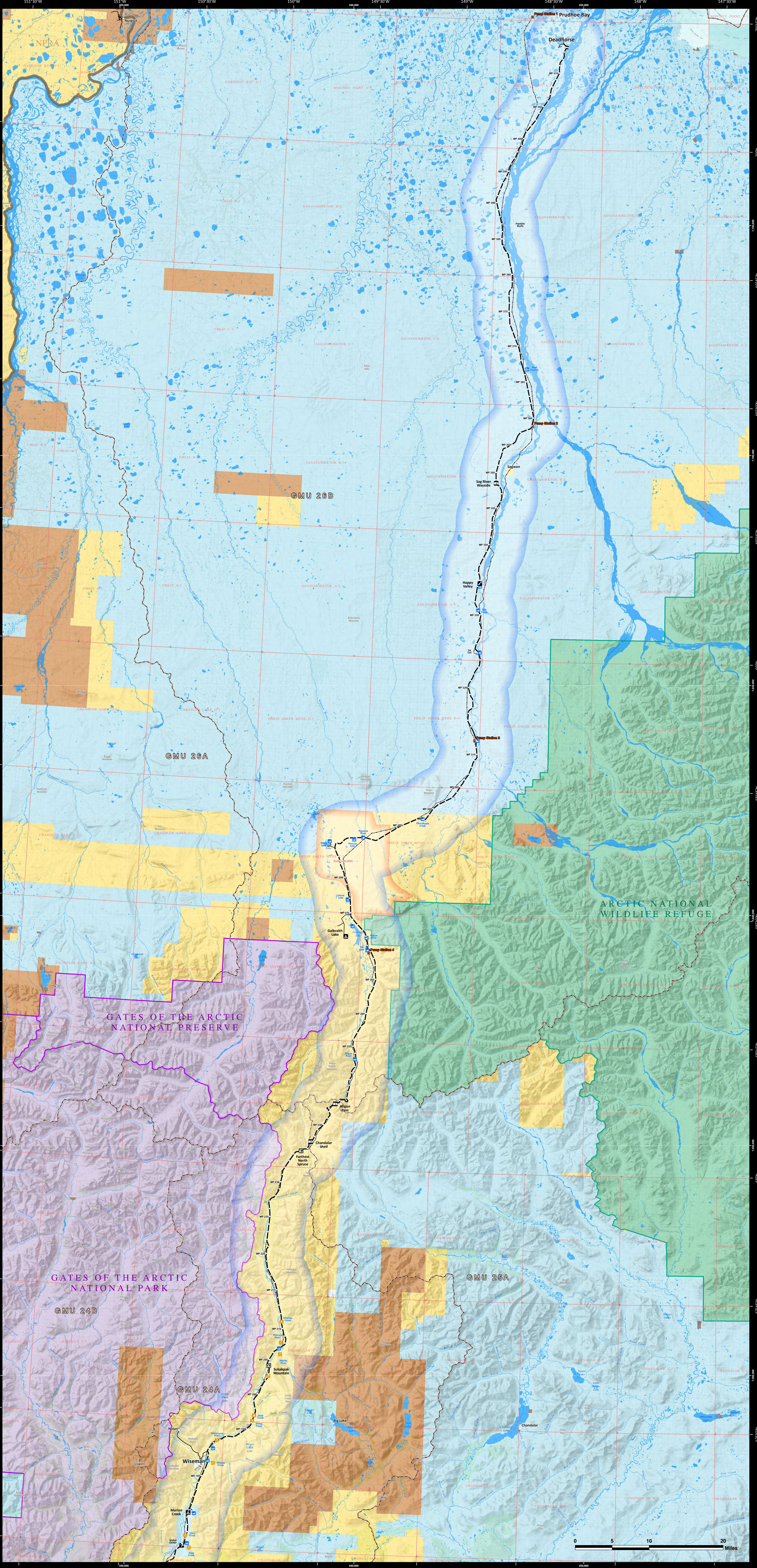
Land Refinement
Land refinement is a key part of the BLM's mission. We work to protect and restore land refinement, and we encourage the public to get involved in land refinement refinement efforts. Please check the BLM website for more information.

Land Refinement
Land refinement is a key part of the BLM's mission. We work to protect and restore land refinement, and we encourage the public to get involved in land refinement refinement efforts. Please check the BLM website for more information.

Land Refinement
Land refinement is a key part of the BLM's mission. We work to protect and restore land refinement, and we encourage the public to get involved in land refinement refinement efforts. Please check the BLM website for more information.

Land Refinement
Land refinement is a key part of the BLM's mission. We work to protect and restore land refinement, and we encourage the public to get involved in land refinement refinement efforts. Please check the BLM website for more information.

Land Refinement
Land refinement is a key part of the BLM's mission. We work to protect and restore land refinement, and we encourage the public to get involved in land refinement refinement efforts. Please check the BLM website for more information.



Location	Fairbanks	Livengood	Yukon River	Arctic Circle	Coldfoot	Atigun Pass	Galbraith Lake	Deadhorse
Fairbanks	*	84 (134)	140 (224)	199 (318)	259 (414)	328 (525)	359 (574)	498 (797)
Livengood	84 (134)	*	56 (90)	115 (184)	175 (280)	244 (390)	275 (440)	414 (662)
Yukon River	140 (224)	56 (90)	*	59 (94)	119 (190)	188 (301)	219 (350)	358 (573)
Arctic Circle	199 (318)	115 (184)	59 (94)	*	60 (96)	129 (206)	160 (256)	299 (478)
Coldfoot	259 (414)	175 (280)	119 (190)	60 (96)	*	69 (110)	100 (160)	139 (222)
Atigun Pass	328 (525)	244 (390)	188 (301)	129 (206)	69 (110)	*	31 (50)	170 (272)
Galbraith Lake	359 (574)	275 (440)	219 (350)	160 (256)	100 (160)	31 (50)	*	139 (222)
Deadhorse	498 (797)	414 (662)	358 (573)	299 (478)	239 (382)	170 (272)	139 (222)	*

- Milepost (MP)
- Highway
- No Off-Road Vehicle Use / Hunting with Firearms Prohibited
- Trans-Alaska Pipeline
- Boat Launch
- Fishing
- Gold Panning/Metalliferous Collection
- Research Natural Area (No Camping)
- Game Management Unit (7/1/2016)
- USGS 1:63,360 Index

- Bureau of Land Management
- National Park Service
- Private
- State of Alaska
- Native Lands

Contact Information

Bureau of Land Management
Fairbanks District Office
222 University Avenue
Fairbanks, Alaska 99701
Phone: 907-474-2200
Fax: 907-459-2008
<http://www.blm.gov>

Alaska Department of Fish & Game
Fairbanks Office
600 North 1st Avenue
Fairbanks, Alaska 99701-1551
Phone: 907-459-2008
<http://www.adfg.alaska.gov>

Dalton Highway Corridor: Coldfoot to Deadhorse

Disclaimer: No warranty is made by the Bureau of Land Management as to the accuracy, reliability, or completeness of these data for individual or aggregate use with other data. Original data were compiled from various sources. The information may not meet National Map Accuracy Standards. This product was developed through a grant measure and may be updated without notification. The information displayed on this map should be used for graphic display only. For official land status information, refer to Cadastral Survey plats, Master Title Plats, and land status case files.