

# HB 287

## Pupil Transportation and Education

### An Early and Stand-alone Appropriation Bill

---

SENATE FINANCE PRESENTATION – FEBRUARY 23, 2018

# HB 287 - Comparison

## HB 287 – As introduced

**Section 1** – Appropriates \$50,853,100 for Foundation Program, Boarding Home Grants, Youth in Detention, Special Schools, and Mt. Edgecumbe Boarding school.

**Section 2** – Sets out funding by agency.

**Section 3** – Sets out funding for appropriations in Section 1.

**Section 4** – Appropriates \$1.2 billion of CBR to the public education fund. Appropriates an estimated \$67.8 million from the SBR for student transportation.

## HB 287 – As passed by the house

**Section 1** – Unchanged

**Section 2** – Unchanged

**Section 3** – Unchanged

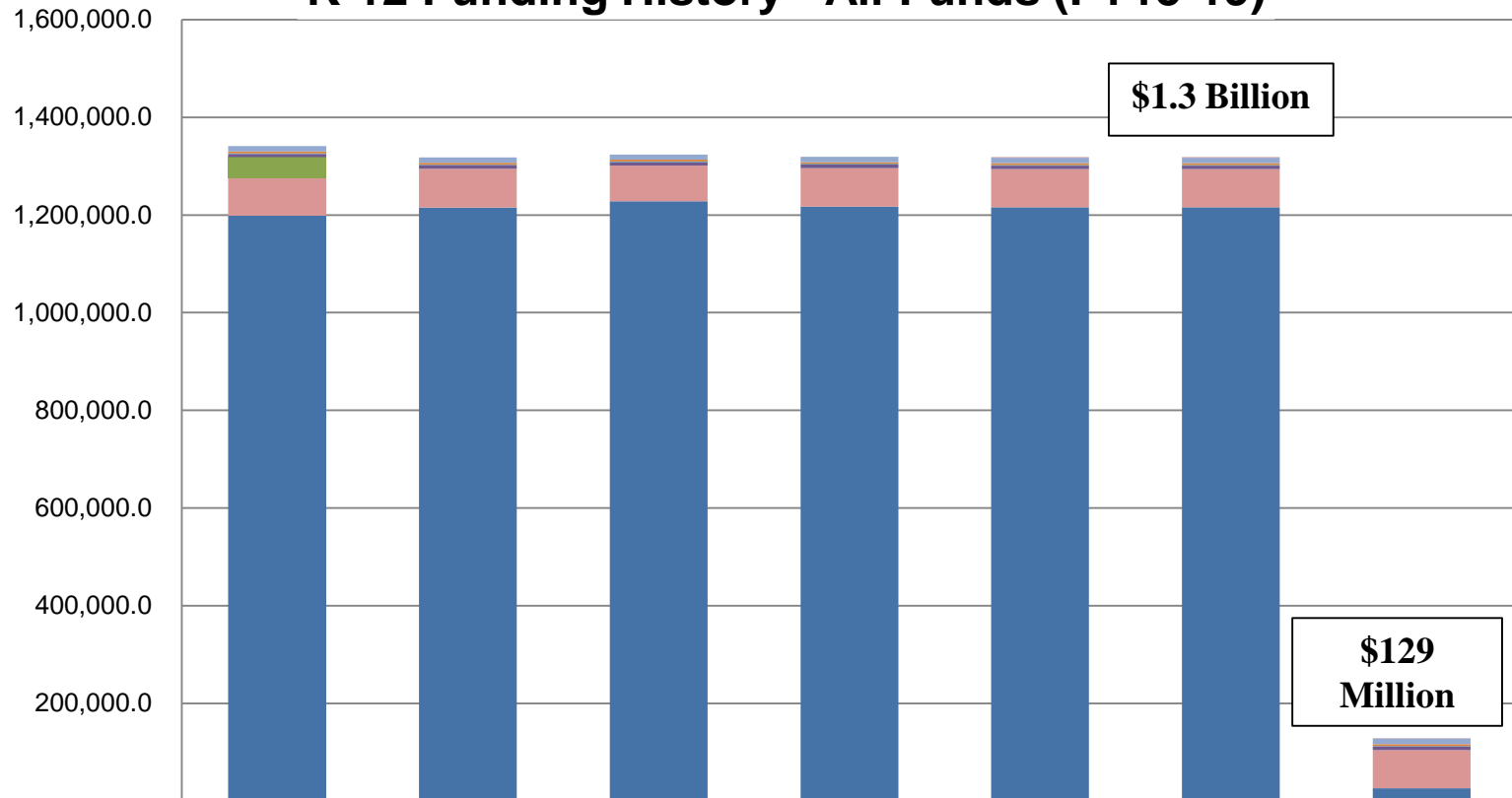
**Section 4** – \$1.2 billion of CBR funding is removed from the bill.

Without the CBR funding, the “estimated to be” of SBR funding now needed for student transportation is \$78.2 million.

# HB 287-Intent of the bill

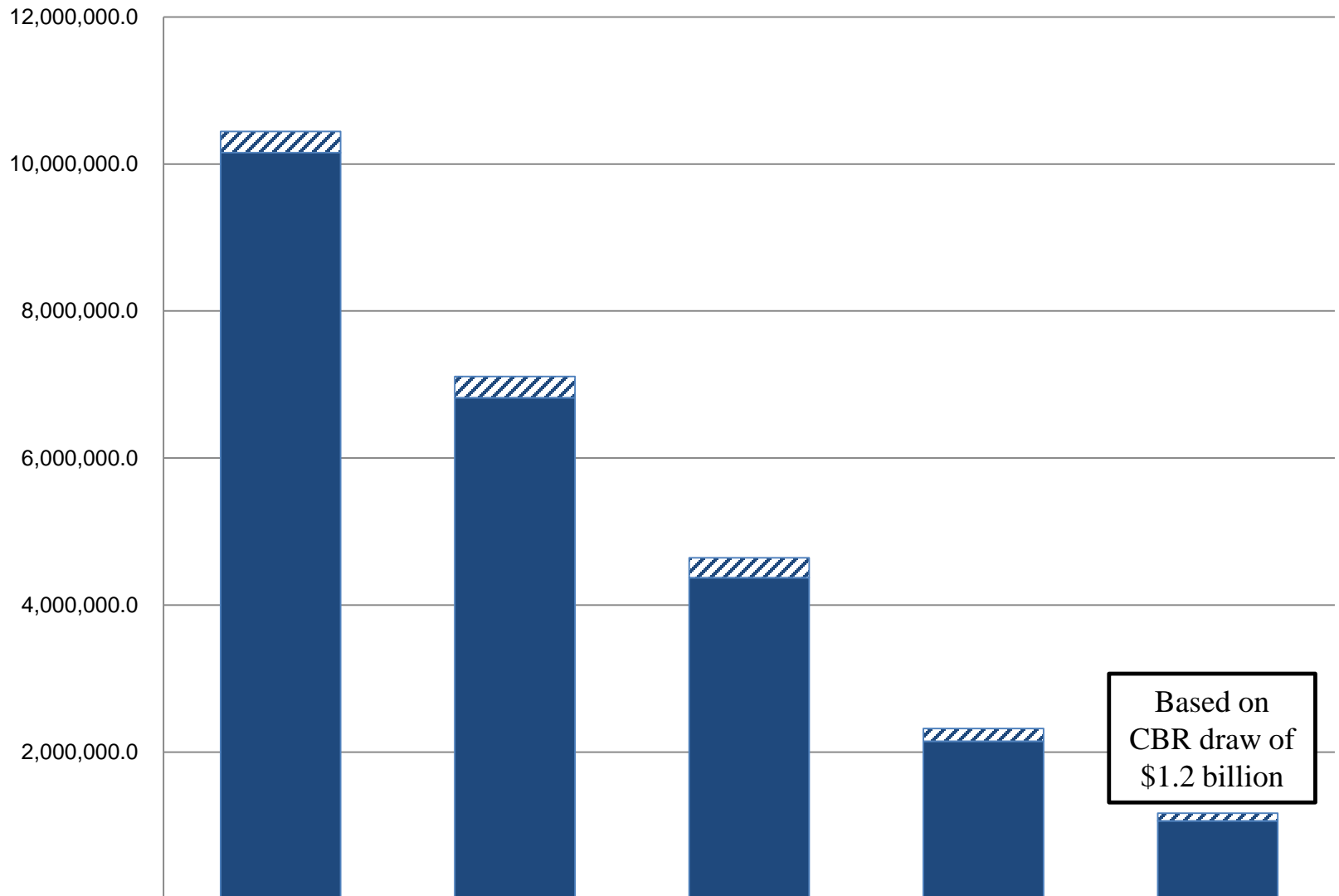
- Stand-alone education appropriations bill.
- Allow school districts to know their level of state aid in advance of passage of the state operating budget.
- Avoid unnecessary teacher layoff notices.
- Same level of funding as the Governor's request.
- Use \$1.2 billion from CBR and about \$67.8 million from SBR.

# K-12 Funding History - All Funds (FY15-19)





	15FnlBud	16FnlBud	17FnlBud	18MgtPn	19Gov	HB 287 as introduced	HB 287 as passed House
Mount Edgecumbe Boarding School Facilities Maintenance	-	-	-	-	1,192.7	1,192.7	1,192.7
Mt. Edgecumbe Boarding School	10,927.0	10,808.3	10,833.3	11,014.0	11,420.6	11,420.6	11,420.6
Special Schools	3,693.3	3,582.4	3,532.4	3,563.9	3,558.2	3,558.2	3,558.2
Youth in Detention	1,100.0	1,100.0	1,100.0	1,100.0	1,100.0	1,100.0	1,100.0
Boarding Home Grants	6,960.3	7,696.4	7,553.2	7,453.2	7,453.2	7,453.2	7,453.2
Additional Foundation Funding	42,953.5	-	-	-	-	-	-
Pupil Transportation	76,773.9	79,240.3	72,619.8	79,029.6	78,184.6	78,184.6	78,184.6
Foundation Program	1,198,664.3	1,215,262.7	1,228,382.9	1,217,257.6	1,215,805.8	1,215,805.8	26,128.4

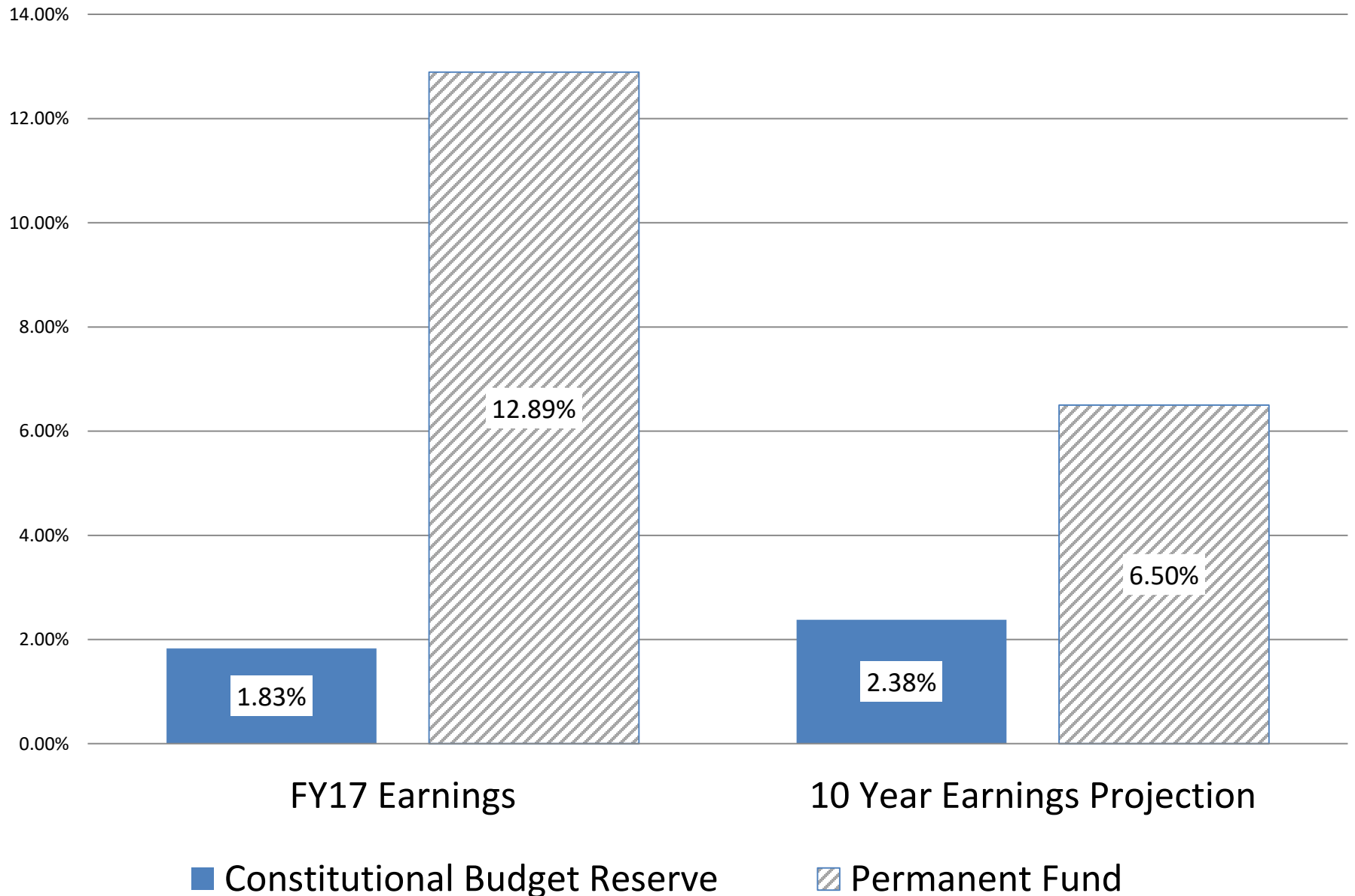
# End-of-Year Savings Balances - FY15-19



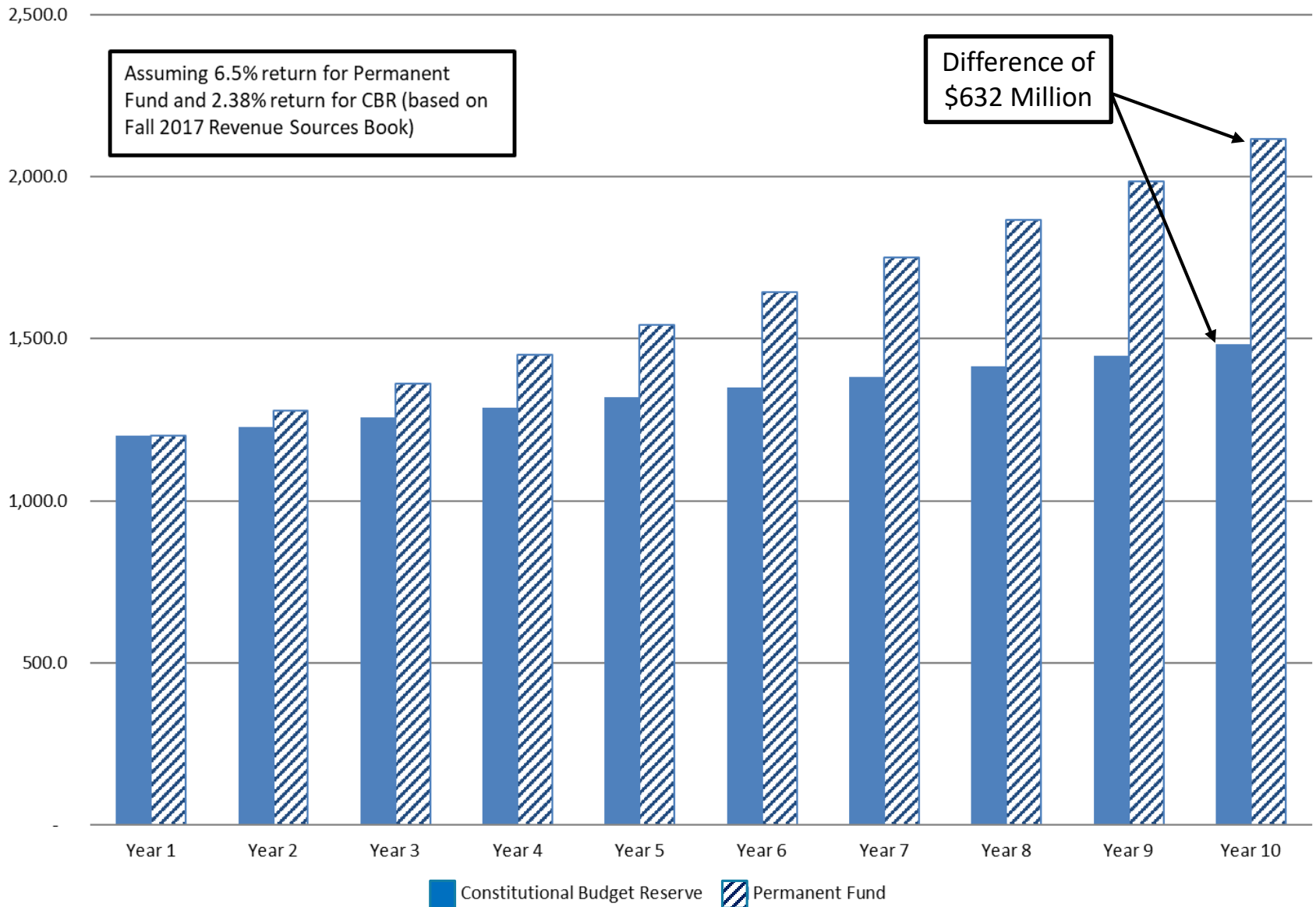
Based on  
CBR draw of  
\$1.2 billion

 Statutory Budget Reserve	287,974.0	287,974.0	267,974.0	172,422.0	104,560.0
 Constitutional Budget Reserve	10,153,804.0	6,820,888.0	4,373,288.0	2,146,988.0	1,063,288.0

## Earnings Comparisons - CBR and Permanent Fund



## Effect of Earnings Rate on \$1.2 Billion



Education is one of the highest priority programs for the state and educators are shaping future generations.

HB 287 reflects the importance of education to our state.