



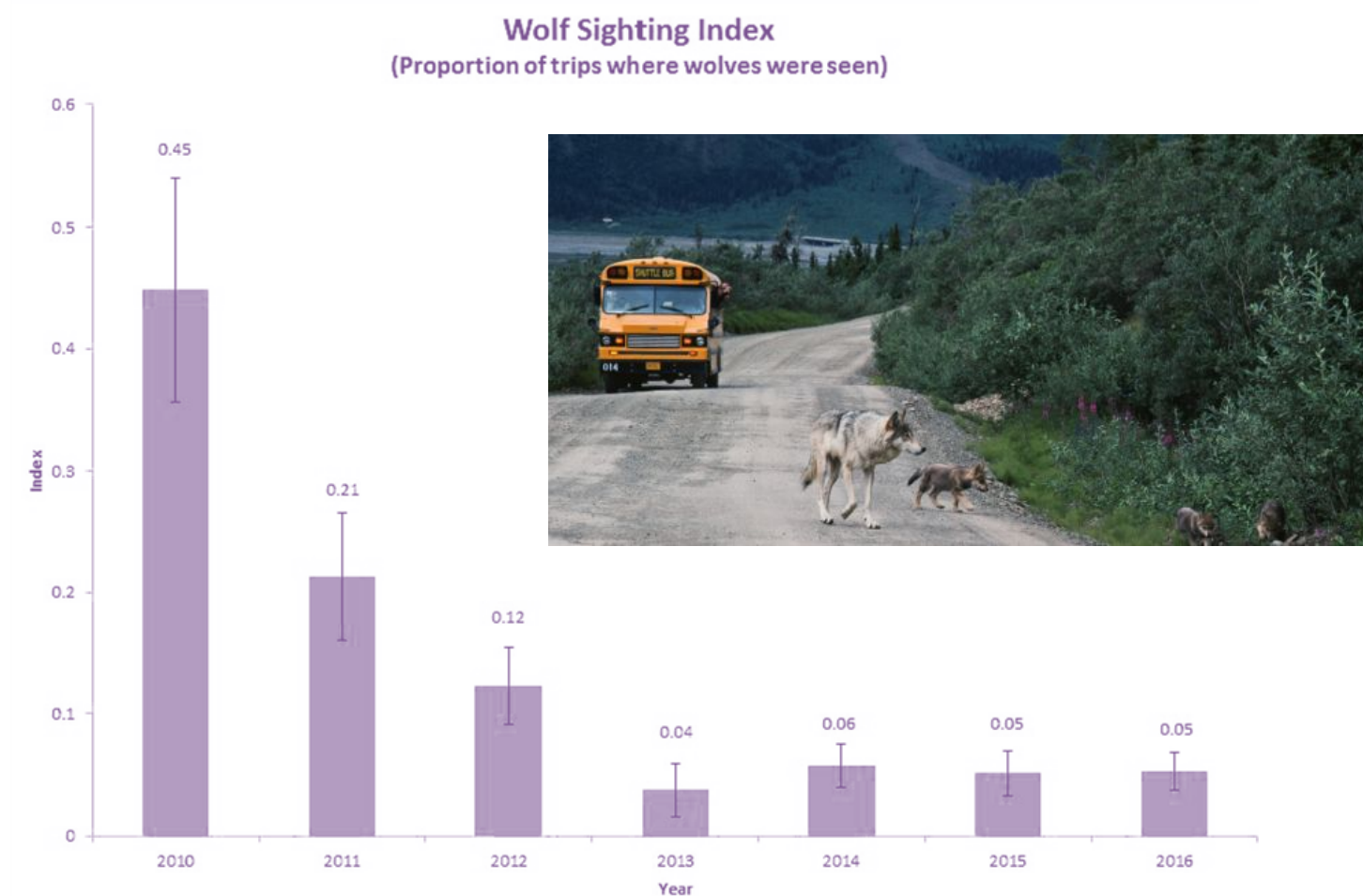
Denali Wolf Buffer

HB 105



Wolves in Denali

- Wolf sightings are a major tourist draw to the area.
- The Board of Game established a buffer zone on Denali's eastern boundary in 2000, but this was eliminated in 2010.
- In 2014, less than 6% of park visitors were able to see wolves, a decrease from 45% from 2010.
- Wolf populations in Denali have declined from 116 in spring 2006 to 50 in spring 2014.



...why is this a problem? Economics.

Source: National Park Service

The Issue

- **5 collared wolves** from Denali packs have been killed outside the park so far this winter (2017-18).
 - Riley Creek male harvested in Stampede corridor; collar destroyed
 - This wolf was commonly seen along the park road & had a role in 2017's higher viewing rate.
 - 2 wolves from Comb Pack harvested in Stampede corridor
 - 1 wolf from Eagle Creek Pack harvested in Nenana Canyon
 - 1 dispersed wolf from Iron Creek Pack harvested near Delta



Economic Benefit of Wildlife Viewing

- Total direct expenditures by wildlife viewers in the USA were \$54.9 billion in 2011.

Table 1. Summary of National Economic Impacts of Wildlife Watching: 2011

Wildlife Watchers	71,776,000
Total Expenditures ⁽¹⁾	\$54,890,272,000
Total Industrial Output ⁽²⁾	\$142,147,057,177
Jobs	1,379,282
Salaries and Wages	\$53,036,586,430
State and Local Tax Revenues	\$10,277,128,026
Federal Tax Revenues	\$10,818,805,399

Figure 1. Wildlife Expenditures by Major Category: 2011
(Total Expenditures: \$54.9 billion)

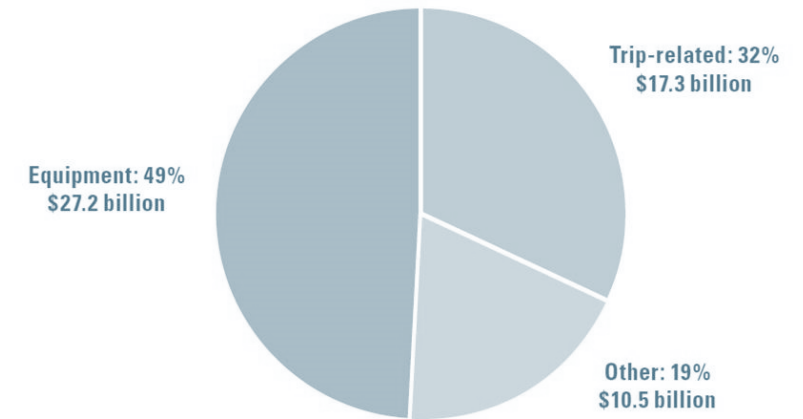
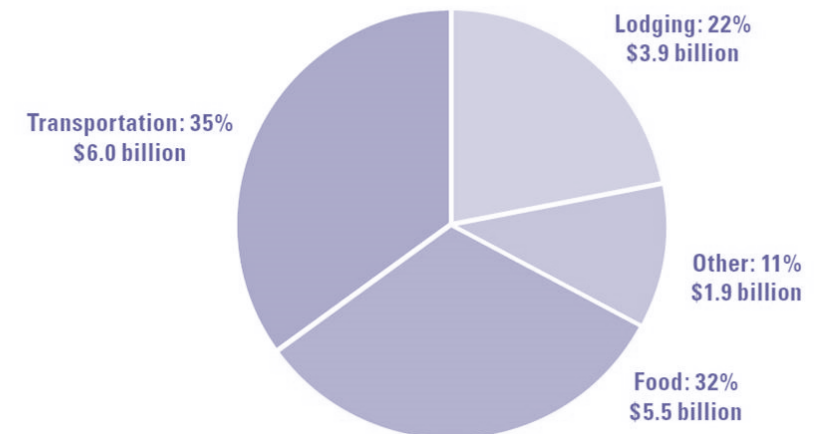


Figure 2. Trip Expenditures for Wildlife Watching: 2011
(Total Trip Expenditures: \$17.3 billion)



Source: US Fish & Wildlife Service

Table 6. Economic Impact of Wildlife Watching by State in 2011

State	Expenditures ⁽¹⁾	Total Multiplier Effect ⁽²⁾	Jobs	Salaries and Wages	State and Local Tax Revenues	Federal Tax Revenues
Alabama	\$734,204,000	\$1,337,607,738	18,513	\$500,676,304	\$103,558,967	\$99,922,934
Alaska	\$2,058,996,580	\$3,368,780,475	40,493	\$1,553,658,942	\$311,271,218	\$254,559,696
Arizona	\$935,879,000	\$1,596,262,256	18,728	\$623,664,259	\$133,611,118	\$126,287,964
Arkansas	\$216,073,000	\$326,790,800	4,586	\$116,418,502	\$29,001,941	\$23,172,913
California	\$3,777,674,000	\$7,335,913,459	76,941	\$3,018,306,584	\$647,645,341	\$617,700,656
Colorado	\$1,432,082,000	\$2,650,114,899	31,157	\$1,114,213,845	\$228,240,368	\$228,244,417
Connecticut	\$934,703,000	\$1,623,177,206	15,961	\$654,844,506	\$118,313,266	\$145,270,697
Delaware	\$169,787,000	\$280,425,899	3,315	\$119,052,667	\$26,987,225	\$23,612,521
Florida	\$3,041,333,000	\$5,423,619,174	60,984	\$2,189,951,245	\$436,326,174	\$464,074,516

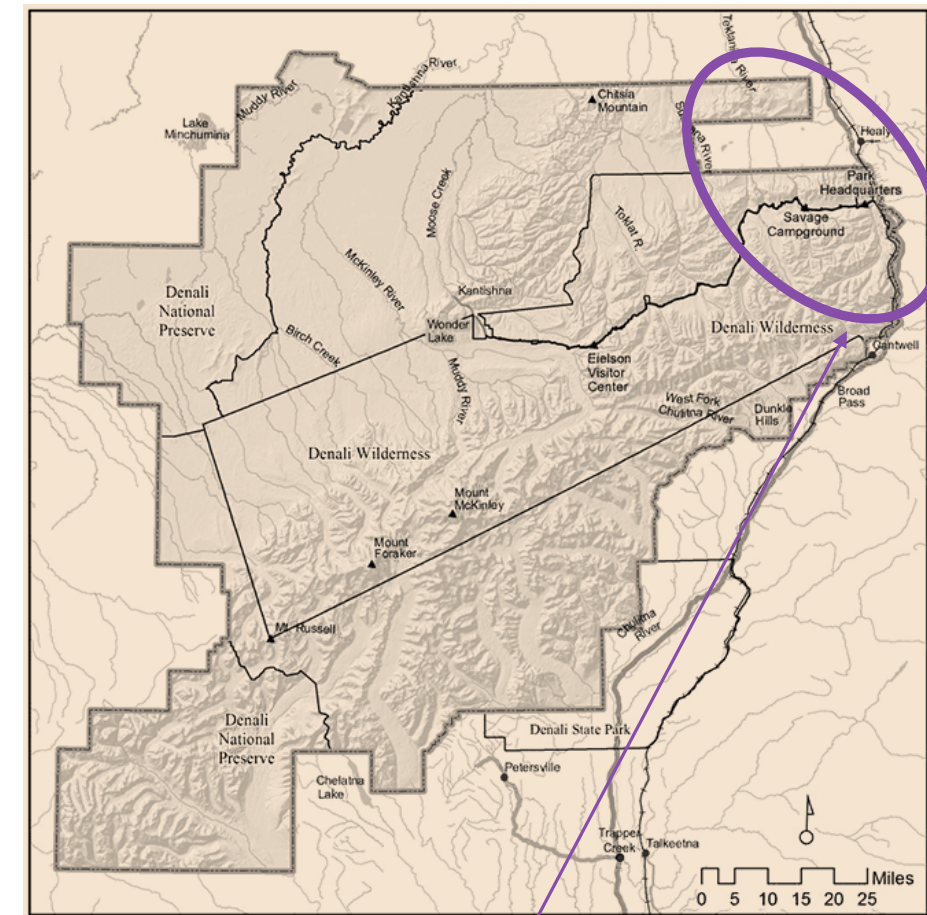
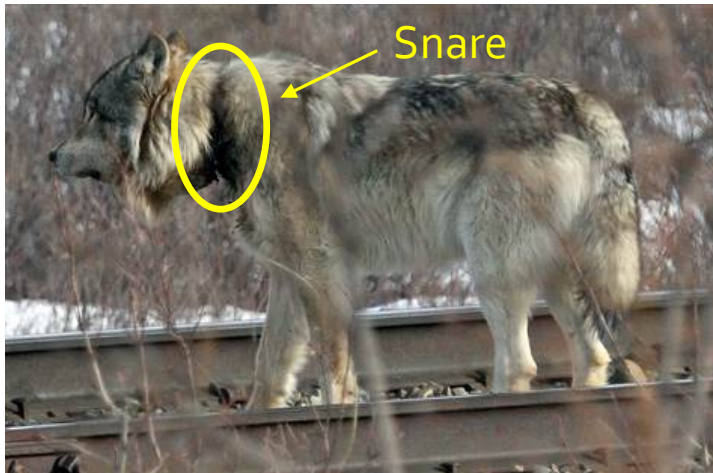
Table 4. Top Ten States Ranked by Economic Output: 2011

Rank	State	Economic Output	Wildlife Watchers
1	New York	\$4,151,793,000	4,239,000
2	California	\$3,777,674,000	6,733,000
3	Washington	\$3,173,373,000	2,168,000
4	Florida	\$3,041,333,000	4,308,000
5	Alaska	\$2,058,996,580	640,000
6	Texas	\$1,823,759,000	4,376,000

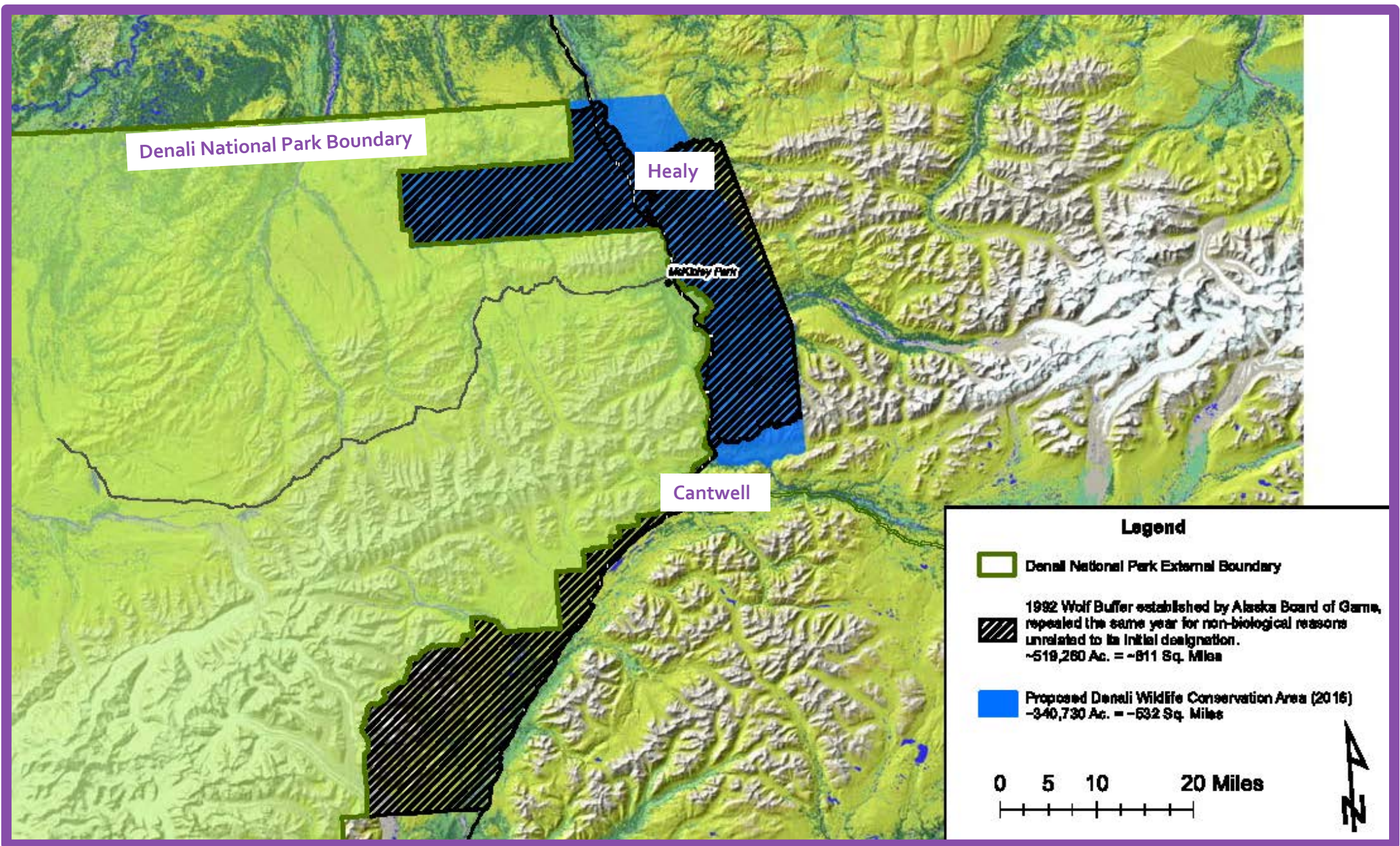
Source: US Fish & Wildlife Service

The Buffer Zone

- To protect wolves for future Alaskans & visitors, HB 105 would **prohibit wolf hunting & trapping** in two areas adjacent to Denali National Park & Preserve:
 - Wolf Townships (aka Stampede Trail)
 - Nenana Canyon



The proposed
buffer zone



Support...

By: Van Lawrence
Introduced: 08/25/2016
Adopted: 08/25/2016

FAIRBANKS NORTH STAR BOROUGH

RESOLUTION NO. 2016-39

A RESOLUTION URGING GOVERNOR WALKER TO CLOSE AREAS ADJACENT TO DENALI NATIONAL PARK AND PRESERVE TO THE TRAPPING AND HUNTING OF BEARS, WOLVES AND WOLVERINES

WHEREAS, Over a half a million annual visitors from around the world come to Denali National Park and Preserve, in large part, to see the iconic wolves and bears of the Park; and

WHEREAS, Both the Park and commercial tour companies advertise Denali National Park and Preserve as the best place in the world to see wolves within their natural habitat; and

WHEREAS, A large percentage of these visitors come to Fairbanks because of our proximity to the Park; and

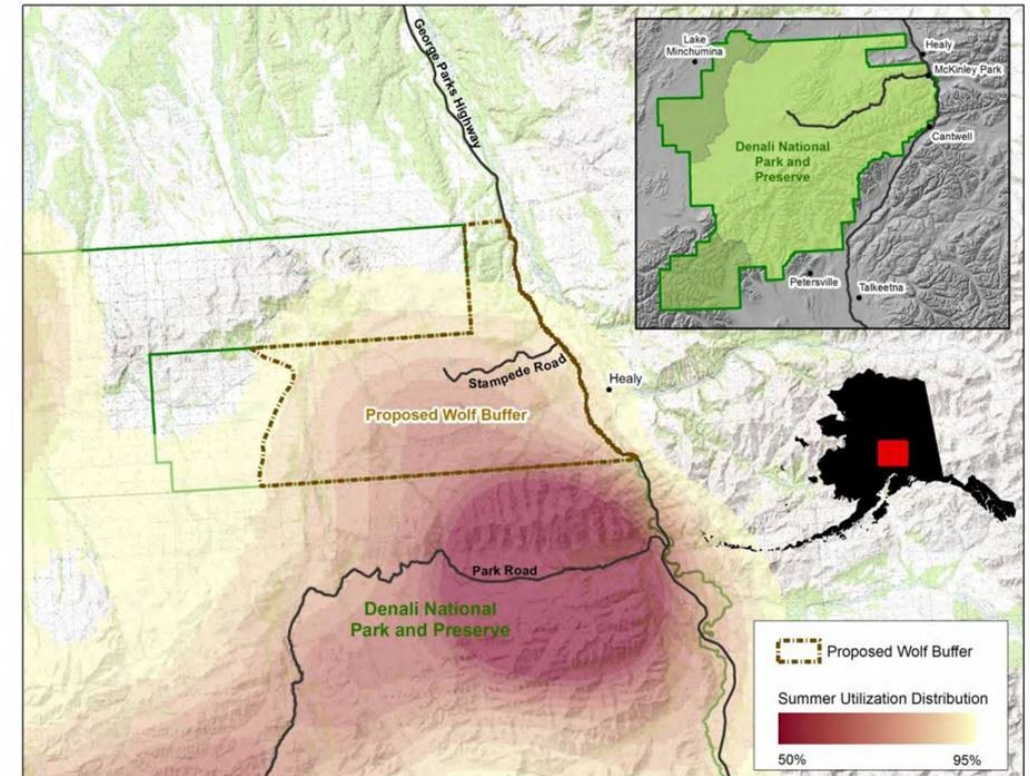


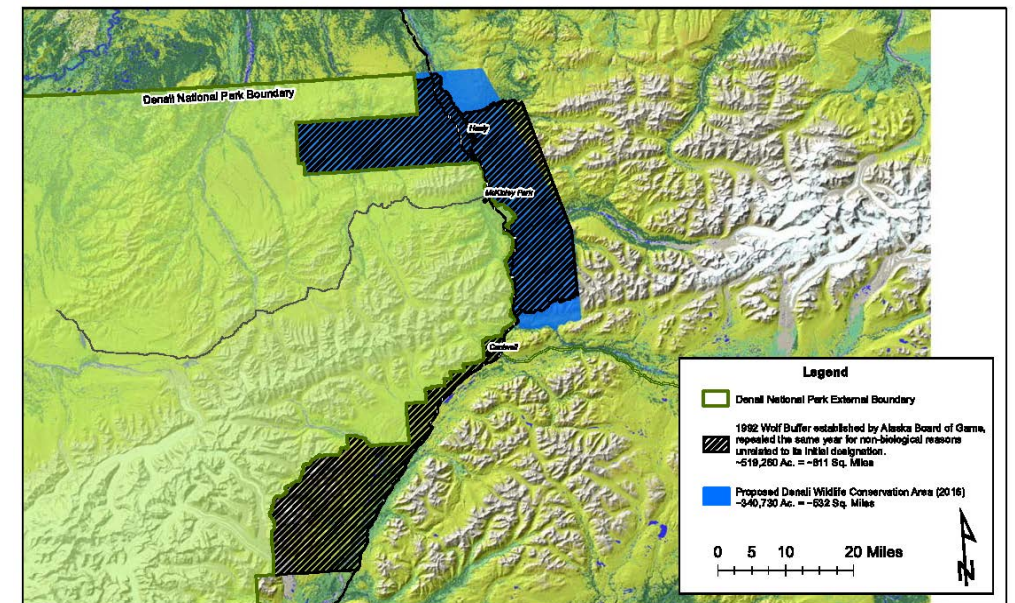
Figure 2. Density of radio collared wolf locations during May - September, 2004-2015 in the northeast corner of Denali National Park and Preserve in interior Alaska, USA.

National Park Service 2017 buffer proposal:

Prohibit taking of wolves in portion of Game Management Unit 20C, per above. Close wolf hunting from Feb 1 - Jul 31 and trapping from Feb 1 - Oct 31 .

Section 1: Adds new section to 16.05 (Fish & Game Code)

- Prohibits taking of wolves & use of certain traps & snares in specific areas adjacent to Denali National Park & Preserve.
 - A person may not take a wolf or use a cable snare with a diameter greater than $\frac{3}{32}$ " or a leg-hold trap with a jaw-spread greater than 5" within the boundaries described.
 - Nothing in this section may be construed to prevent the department from taking, or authorizing the taking of, wolves that present a danger to the health or safety of local residents.
 - A person who negligently violates (a) of this section is guilty of a class A misdemeanor.



Thank you.

