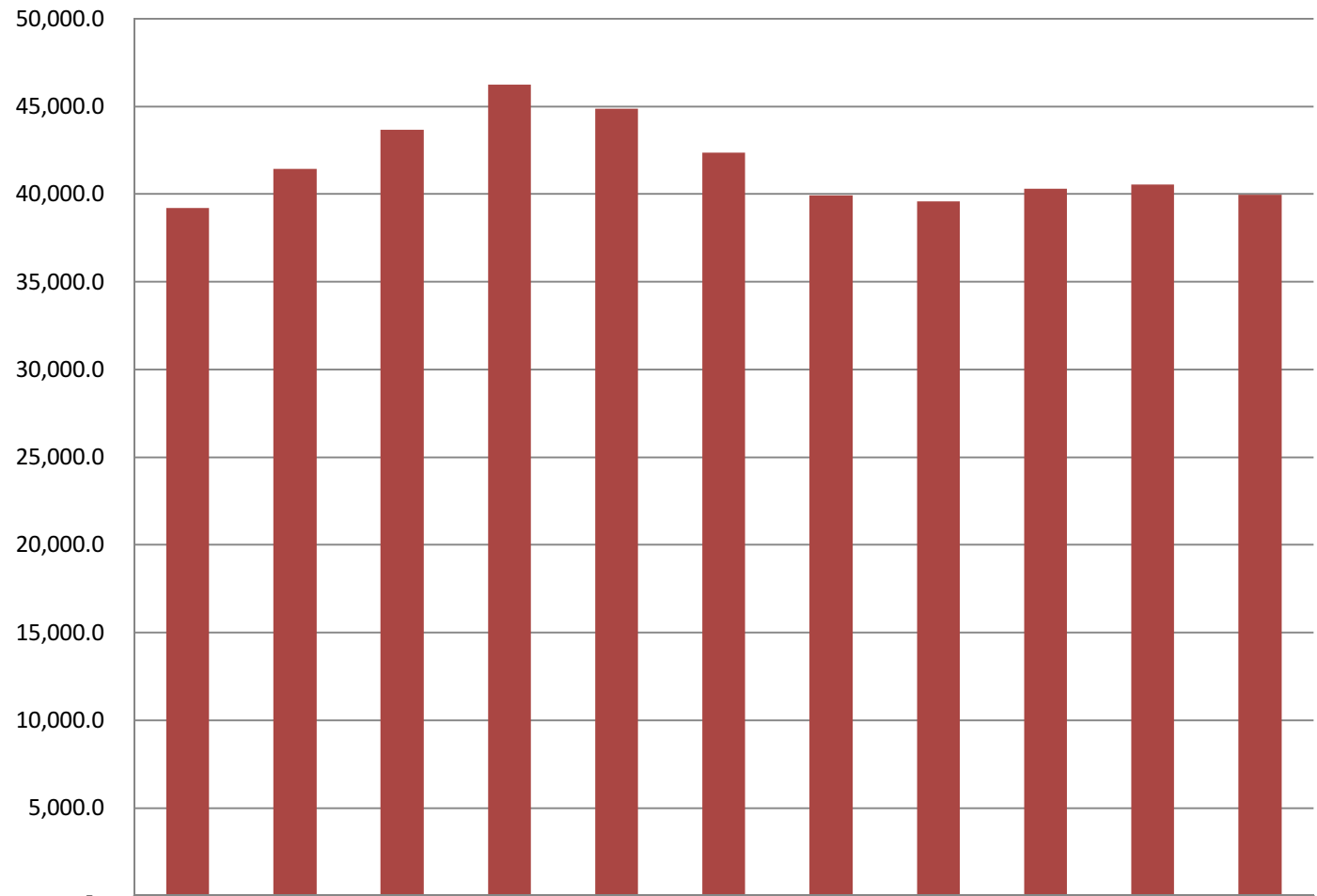


## Department of Environmental Conservation Share of Total Agency Operations

(GF Only)  
(\$ Thousands)

DEC GF budget increased by \$0.8 million between FY11 and FY21 Governor - an average annual growth rate of 0.19%.

The FY21 GF budget equates to **\$124.05 per resident worker** (based on 322,134 Alaskan workers).



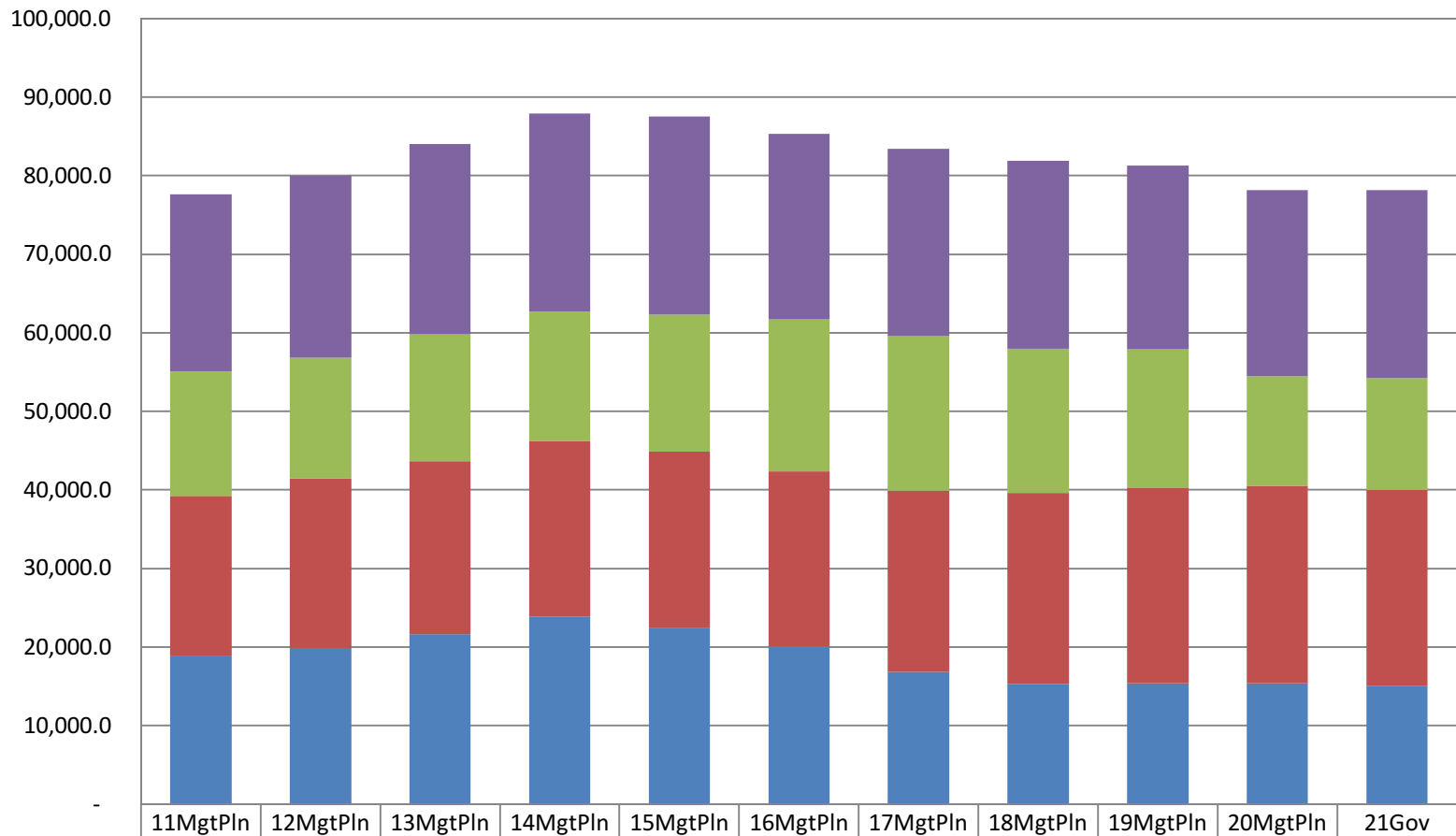
	11MgtPln	12MgtPln	13MgtPln	14MgtPln	15MgtPln	16MgtPln	17MgtPln	18MgtPln	19MgtPln	20MgtPln	21Gov
■ Total Agency Budget (GF Only)	39,191.6	41,446.3	43,654.8	46,234.5	44,850.8	42,368.0	39,909.0	39,575.9	40,311.7	40,541.7	39,960.2
% of Agency Budget to Total Agencies Budgets	0.90%	0.88%	0.87%	0.91%	0.86%	0.88%	0.85%	0.87%	0.85%	0.89%	0.85%

Between FY11 & FY21 Gov:  
 --UGF *decreased* by \$3.7 million (-20%)  
 --DGF increased by \$4.5 million (22%)  
 --Other funds decreased by \$1.6 million (-10%)  
 --Federal Funds increased by \$1.5 million (6%)

## Department of Environmental Conservation

### Total Funding Comparison by Fund Group

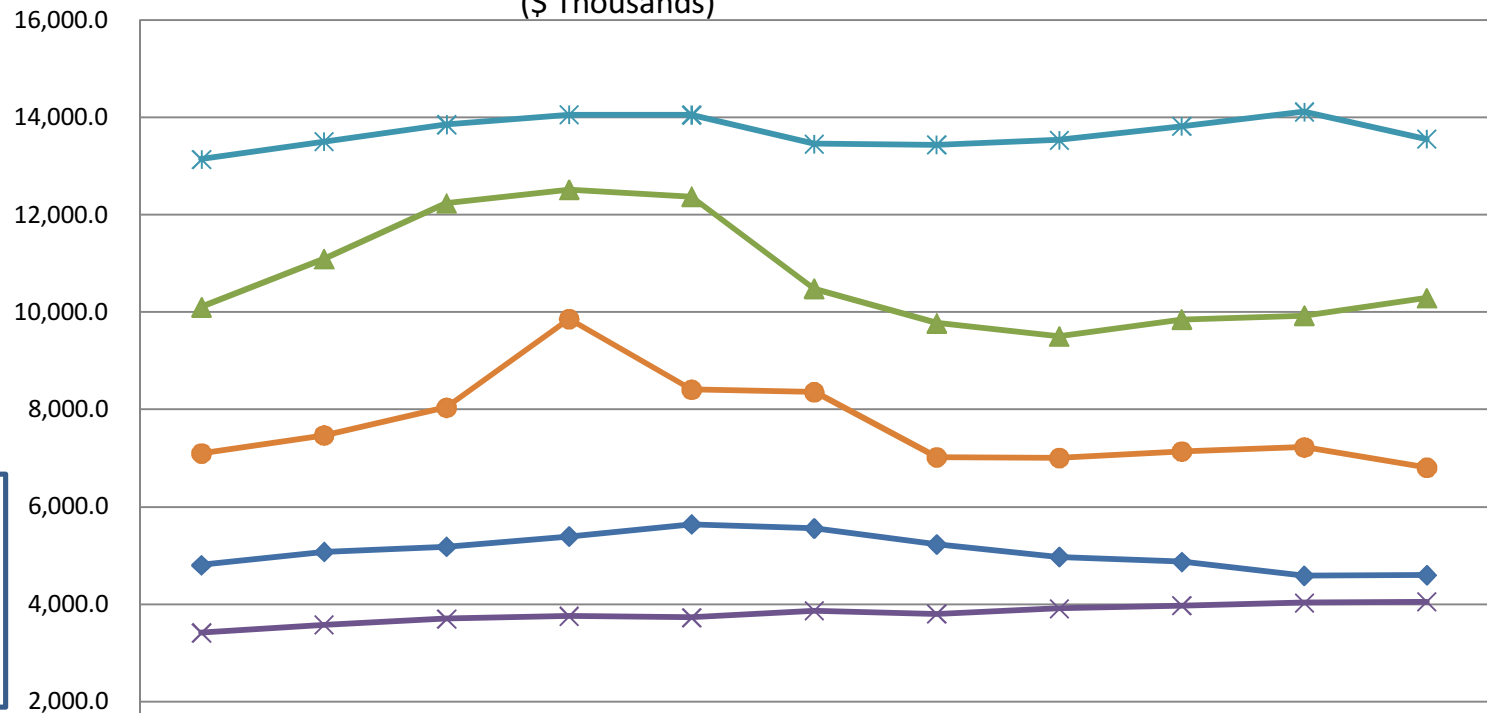
(All Funds)  
 (\$ Thousands)



	11MgtPln	12MgtPln	13MgtPln	14MgtPln	15MgtPln	16MgtPln	17MgtPln	18MgtPln	19MgtPln	20MgtPln	21Gov
Federal Receipts (Fed)	22,527.4	23,215.2	24,233.7	25,218.3	25,262.4	23,628.9	23,863.8	23,896.6	23,356.3	23,670.6	23,981.2
Other State Funds (Other)	15,870.3	15,348.4	16,111.7	16,474.3	17,447.7	19,356.7	19,646.4	18,415.7	17,583.9	13,924.6	14,233.3
Designated General (DGF)	20,368.9	21,562.1	22,071.0	22,392.2	22,378.7	22,274.7	23,080.3	24,278.0	24,919.9	25,144.5	24,879.6
Unrestricted General (UGF)	18,822.7	19,884.2	21,583.8	23,842.3	22,472.1	20,093.3	16,828.7	15,297.9	15,391.8	15,397.2	15,080.6

# Appropriations within Department of Environmental Conservation

(GF Only)  
(\$ Thousands)



**NOTE:** In FY15, Air Quality became a new appropriation rather than an allocation within Environmental Health.

	11Mgt Pln	12Mgt Pln	13Mgt Pln	14Mgt Pln	15Mgt Pln	16Mgt Pln	17Mgt Pln	18Mgt Pln	19Mgt Pln	20Mgt Pln	21Gov
Administration	4,804.6	5,075.9	5,181.8	5,395.0	5,642.0	5,558.2	5,231.3	4,973.4	4,871.1	4,587.6	4,597.7
DEC Bldgs Maint & Operations	620.4	718.1	632.6	635.5	636.5	636.5	635.2	636.8	645.9	646.6	652.5
Environmental Health	10,104.8	11,095.3	12,240.7	12,521.6	12,378.3	10,484.1	9,776.2	9,508.0	9,853.2	9,932.9	10,290.3
Air Quality	3,414.8	3,577.8	3,701.3	3,756.2	3,727.7	3,869.8	3,801.1	3,912.8	3,974.0	4,029.1	4,049.9
Spill Prevention and Response	13,145.0	13,507.1	13,858.1	14,063.1	14,056.4	13,459.8	13,444.1	13,537.4	13,825.5	14,120.1	13,561.9
Water	7,102.0	7,472.1	8,040.3	9,863.1	8,409.9	8,359.6	7,021.1	7,007.5	7,142.0	7,225.4	6,807.9