



Joint House & Senate State Affairs Committee

April 3, 2025

Trust Beneficiaries

Trust beneficiaries include Alaskans who experience:

- Mental illnesses
- Intellectual and/or developmental disabilities
- Alzheimer's disease and related dementia
- Traumatic brain injuries
- Substance use disorders



Video link: <https://alaskamentalthtrust.org/about/>

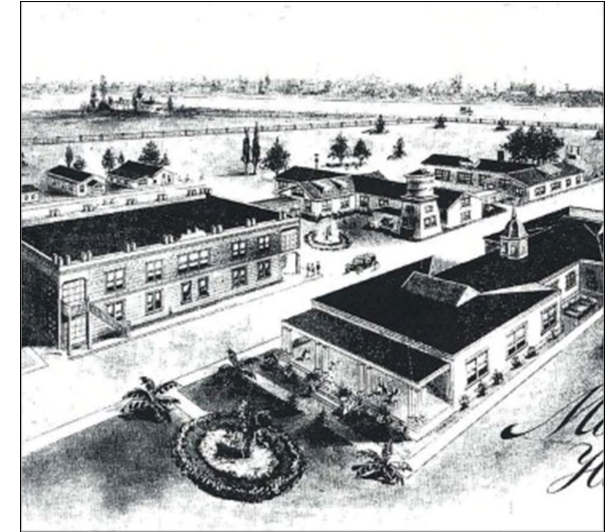


Creation of the Alaska Mental Health Trust Authority

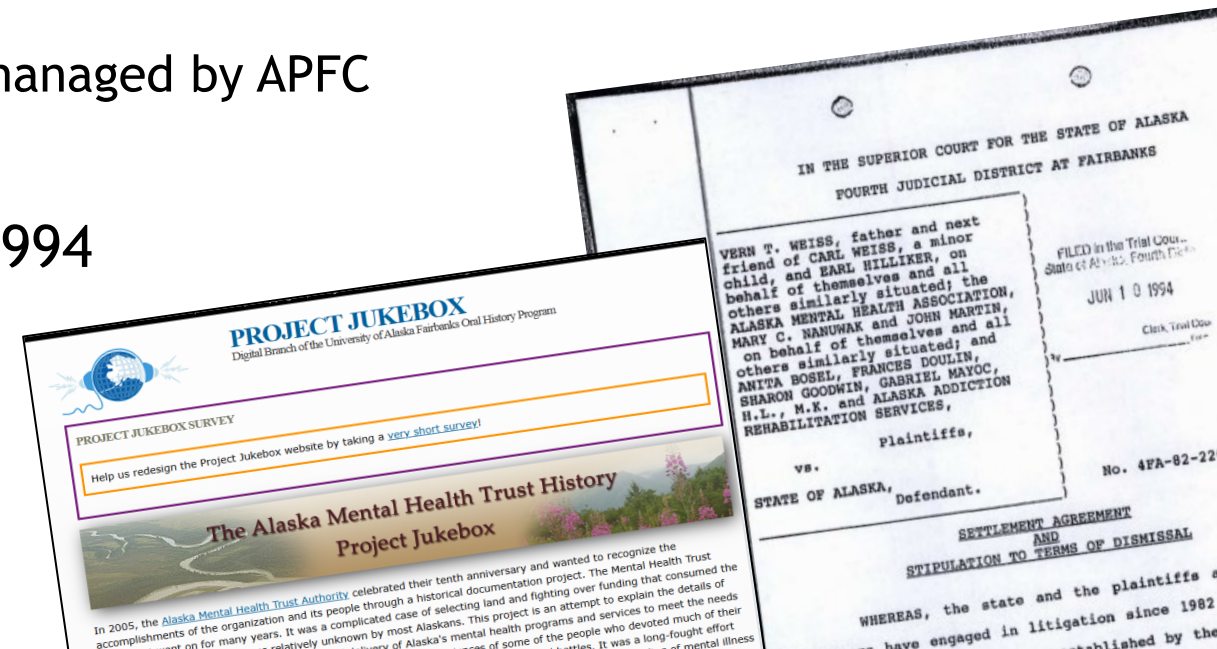
- Prior to statehood, few mental health services available in the territory
- Mental Health Trust Enabling Act, 1956
- Legislature was fiduciary, but mismanaged assets
- Weiss v State of Alaska, 1982
- Final settlement creating the Trust Authority, 1994
 - Trust was reconstituted, resulting in 1M acres of land to be managed by the Trust Land Office
 - \$200M in cash (origin of our corpus), managed by APFC
 - Independent board of trustees
- Trust established in Alaska Statute, 1994

Historical documents and more available on our history webpage

- UAF's Project Jukebox Oral History Project



Morningside Hospital, Oregon





Board of Trustees

- Appointed by the Governor, confirmed by the Legislature to 5-year terms
- Trust Authority forwards a list of recommended persons (applicants) prepared by a panel defined in statute for Governor's consideration
- Appointments based on ability in
 - Financial management
 - Land management
 - Services for beneficiaries
- Appointees may not be a state employee/officer, or have worked for an entity that received funds from the Trust in the past 2 years

Board of Trustees

Brent Fisher, *Chair*

Agnes Moran, *Vice Chair, Program & Planning Committee Chair*

Rhonda Boyles, *Secretary*

Corri Feige, *Resource Management Committee Chair*

Kevin Fimon, *Audit & Risk Committee Chair*

John Morris, *Finance Committee Chair*

Anita Halterman, *Trustee*

Our Role

- Oversee management of Trust assets
- Spend Trust income
- Ensure the State has a Comprehensive Integrated Mental Health Program Plan
- Serve as an advocate for beneficiaries and a Change Agent
- Recommend to Governor and Legislature how the State of Alaska should spend general fund resources (GF/MH)

Responsibilities Over Time

Over time, the work of the Trust has remained focused on Trust beneficiaries and aligned with Alaska statute.





Trust Focus Areas

The Trust develops its budget and engages in grantmaking and system improvement efforts around the following areas:

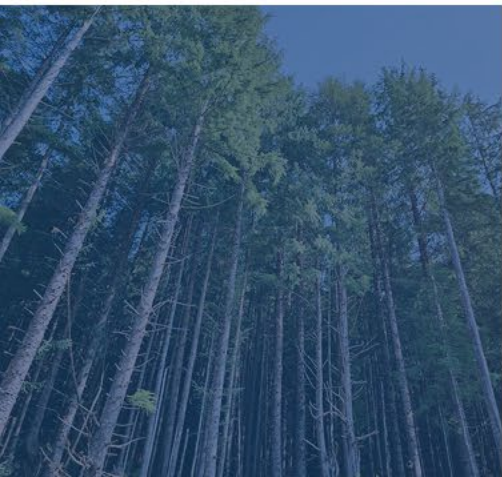
Established Focus Areas

- Disability Justice
- Mental Health & Addiction Intervention
 - Includes Behavioral Health Crisis Response*
- Beneficiary Employment & Engagement
- Housing and Home & Community Based Services



Additional Priorities

- Workforce Development
- Early Childhood Intervention & Prevention



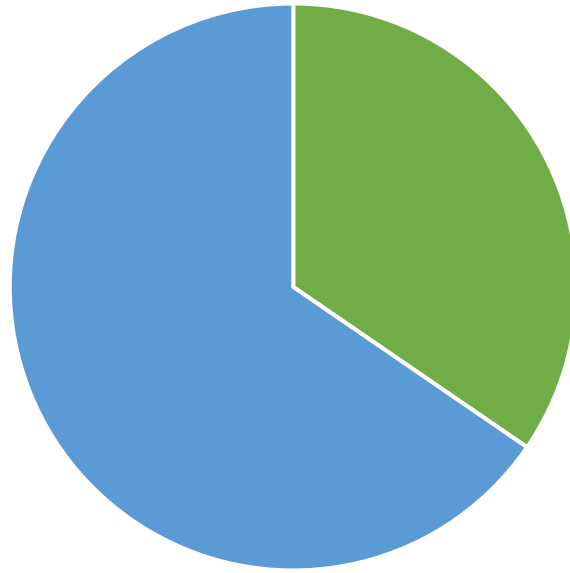
Trust Grantmaking, FY 26

Authority Grants

\$19,119.3

Designated grants to community providers, nonprofits, local governments and Tribal organizations

Includes \$1.9M in mini grants



■ MHTAAR ■ Authority Grants

MHTAAR Grants

\$10,196.8

Designated grants to state agencies, requires receipt authority

FY26 MHTAAR Grant Detail

(53 projects total)

- Department of Health (\$4,413.9)
- UAA (\$1,870.0)
- AHFC (\$1,485.0)
- Department of Corrections (\$1,041.7)
- Department of Family and Community Services (\$587.0)
- Department of Administration (\$355.9)
- Alaska Court System (\$158.3)
- Department of Public Safety (\$130.0)
- Department of Education and Early Development (\$130.0)
- Department of Labor and Workforce Development (\$25.0)

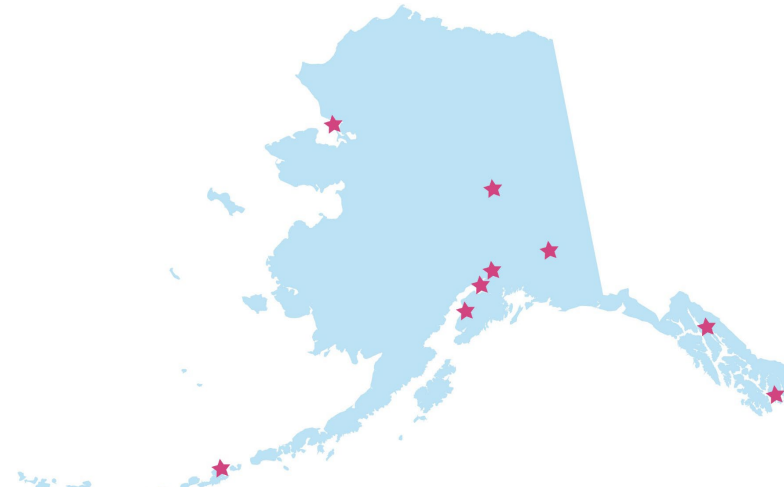


Crisis Now Community Implementation 2024/25

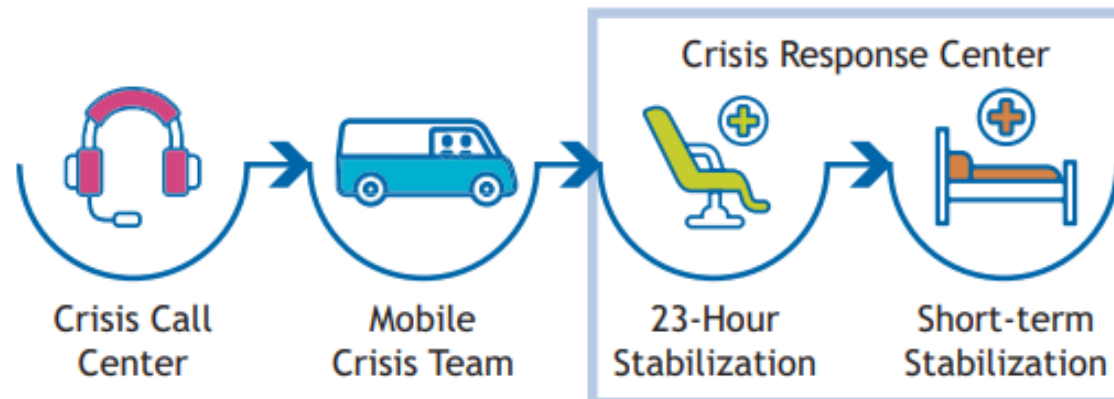
Since the initiative's launch in 2019, the Trust has invested roughly \$20M in planning and grantmaking around psychiatric emergency response.

Crisis service planning and implementation underway in:

Anchorage
Mat-Su
Fairbanks
Juneau
Ketchikan
Kenai Peninsula
Kotzebue
Copper Basin
Unalaska



Someone to Talk to, Someone to Respond and a Place to Go



Trust Land Office



The Trust Land Office sits in the Department of Natural Resources and manages the Trust's one million acres of land and other non-cash assets to generate revenue to help support our work and grantmaking for beneficiaries.

- The Trust received lands with revenue-generating potential
- Trust-owned parcels in Southeast, Southcentral, and Interior AK
- Trust Lands activities generated \$17.2M in FY24
- Lands managed solely in the interest of the Trust and its beneficiaries
- Managed by asset class: lands, minerals and materials, energy (coal, oil, and gas), timber, and real estate

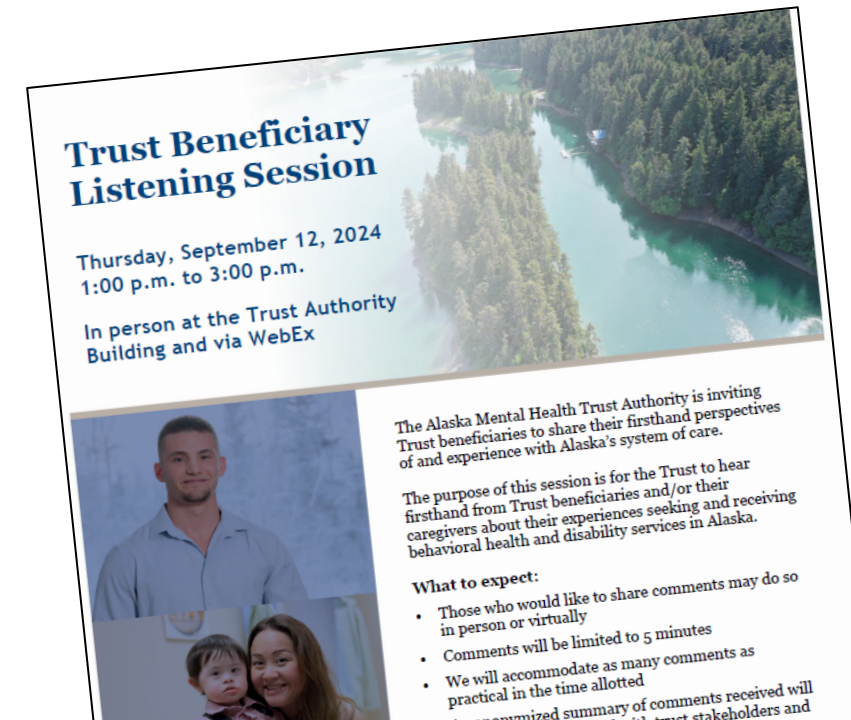


Trust Authority Public Engagement

Maximizing stakeholder and beneficiary input, and collaboration with consumers and partner advocates are guiding principles of the Trust

Engagement Opportunities:

- Public comment at all regular board meetings
- Listening sessions
- Trust budget development process, survey
- Regular consultation with statutory advisors (Alaska Commission on Aging, the Alaska Mental Health Board, the Advisory Board on Alcoholism and Drug Abuse, and the Governor's Council on Disabilities and Special Education)
- Standing engagements with industry/trade entities, Tribal behavioral health leadership, and other key stakeholders

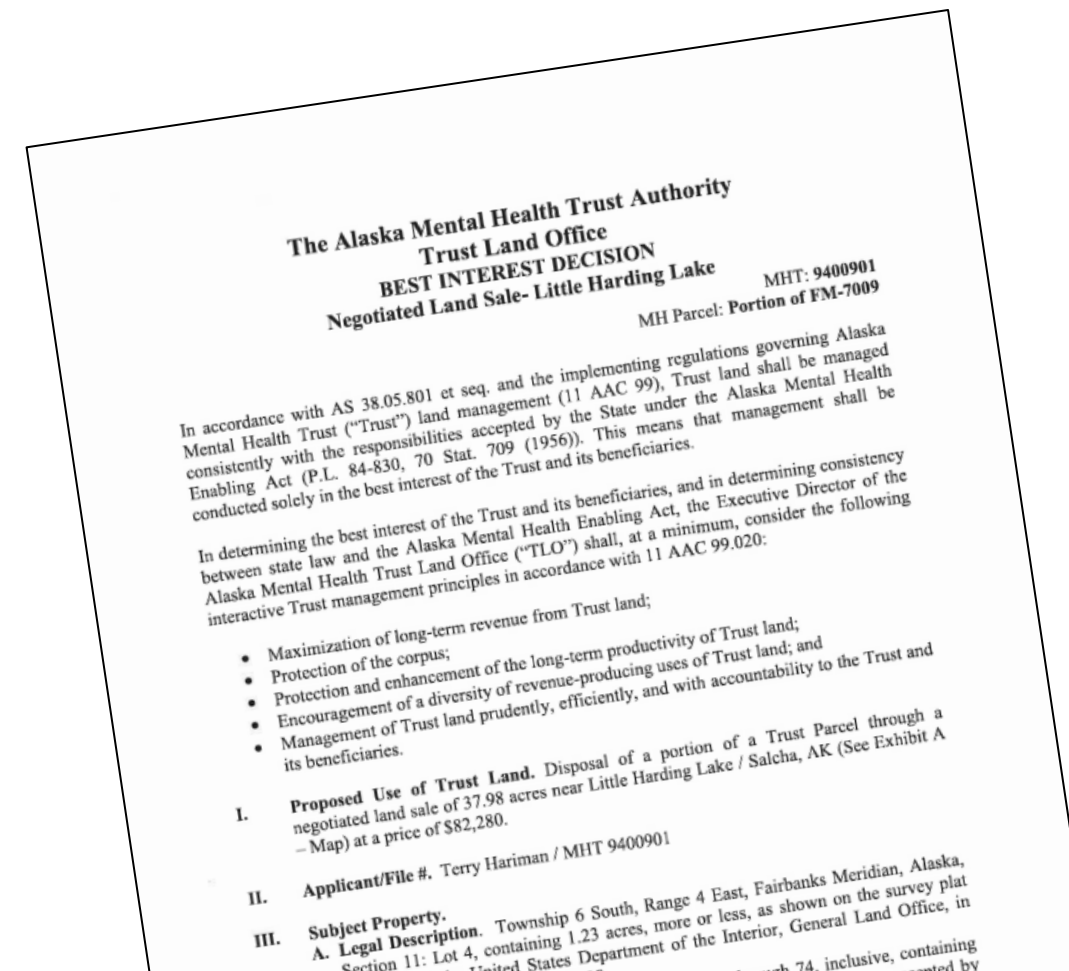


Trust Land Office Public Engagement

All decisions related to the use of Trust lands are made in the best interest of the Trust and its beneficiaries

Engagement and comment opportunities:

- Public comment at all regular board meetings
- Best interest decision (BID) process
- Community meetings
- Regular engagement with partners and industry groups



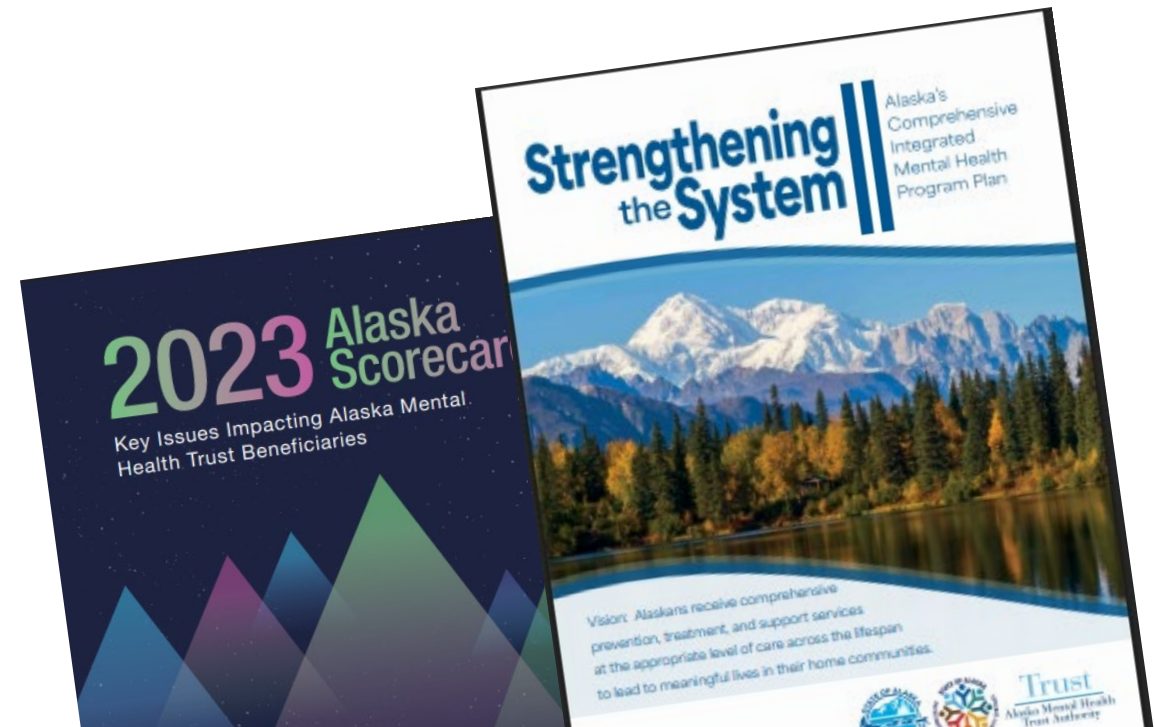
Trust Considerations: Decision Making

Beneficiary-Related Investments:

- Trust focus areas and priorities
- Plans and reports, such as *Strengthening the System II: Alaska's Comprehensive Integrated Mental Health Program plan*
- Scorecards such as the Alaska Scorecard, and Healthy Alaskans 2030
- Dashboards such as the Opioid Data Dashboard, or those on the DOH/Division of Public Health Data Hub
- Internal grant analysis
- Stakeholder Surveys
- Trust beneficiary prevalence estimates
- National data, surveys, and research

Trust Lands:

- Best interest decision process
- Revenue generation/potential
- Resource Management Strategy





The Trust Continues to Meet its Mission

The Trust is a unique asset to our state's mental health system, supporting innovation and system-level improvements

- Behavioral health crisis response
- Access to treatment
- Community-based servicesok



The Trust is completely self-funded, and awards grants to State, local, Tribal, provider, nonprofit, and other partners each year

- Since inception the Trust has awarded more than \$465M, supporting more than 5,000 beneficiary-focused projects



The board of trustees prudently manages Trust assets

- Continued growth in invested assets managed by APFC and DOR

Trust lands support Trust beneficiaries

- Principal and income earnings generated each year from Trust-owned lands and non-cash assets

Thank You

Questions?

Trust

Alaska Mental Health
Trust Authority

alaskamentalhealthtrust.org

