



VISION

ALASKA INDIVIDUALS, FAMILIES AND COMMUNITIES ARE SAFE AND HEALTHY

MISSION

TO PROMOTE AND PROTECT THE HEALTH AND WELL-BEING OF ALASKANS

Department of Education & Early Development
Department of Health & Social Services

JOINT PRESENTATION | HOUSE

March 15, 2018



Healthy Start, Strong Family

Public Assistance – Monica Windom

Health Care Services – Barbara Hale

Public Health – Rebekah Morisse, Tim Struna

Senior & Disabilities Services – Duane Mayes, Maureen Harwood

Behavioral Health – Brita Bishop

Office of Children's Services – Christy Lawton

***Programs and partnerships that support
Alaska children and families.***



MISSION TO PROMOTE AND PROTECT THE HEALTH AND WELL-BEING OF ALASKANS



AECCC

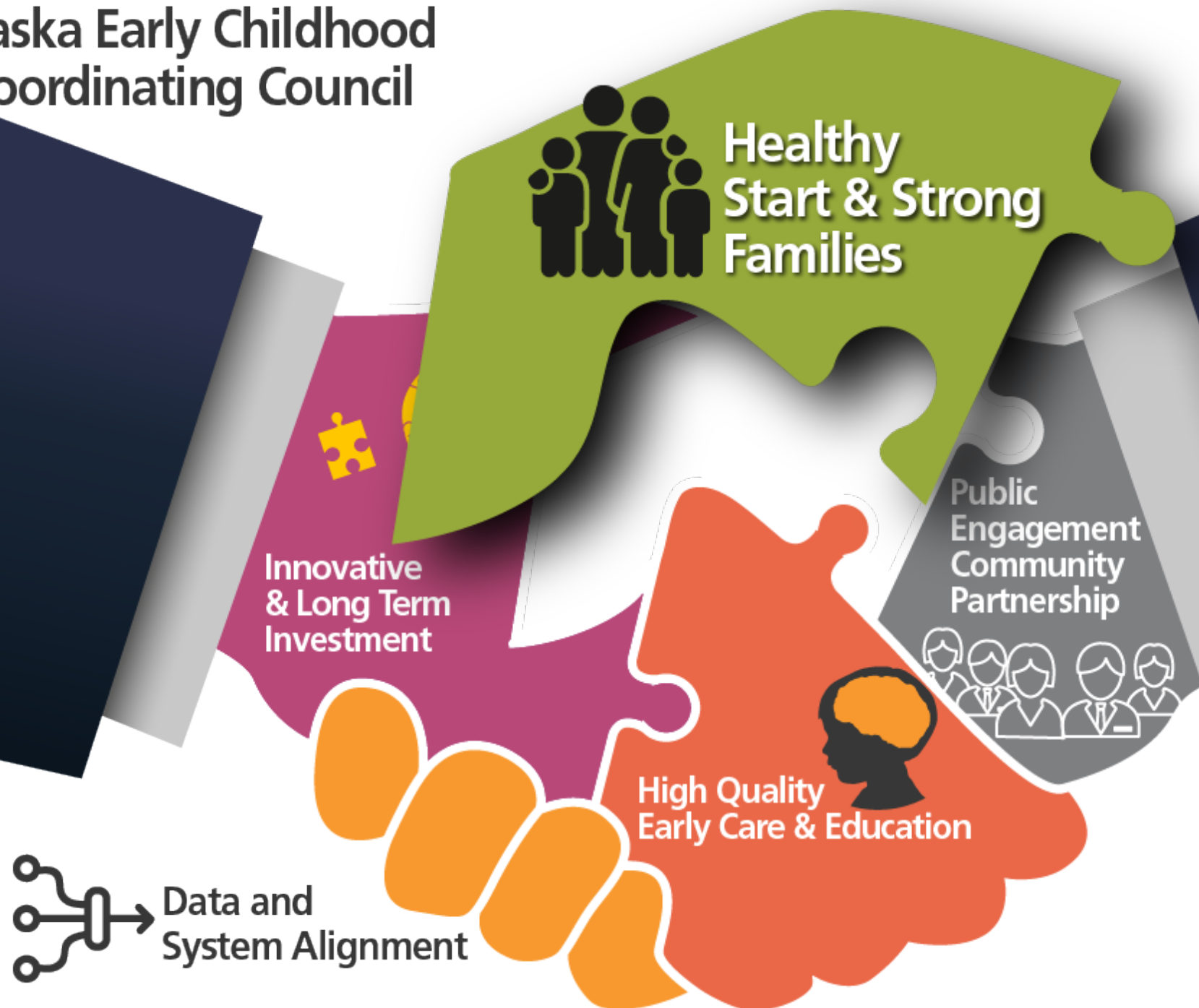
Alaska Early Childhood Coordinating Council





AEECC

Alaska Early Childhood Coordinating Council





Healthy Start and Strong Families

- Denali KidCare
- Supplemental Nutrition Assistance Program (SNAP)
- Women, Infants and Children Program (WIC)
 - Farmer's Market Nutrition Program (FMNP)
 - Breastfeeding Peer Counseling Program (BFPC)
- Child Care Assistance Program (CCAP)
- Alaska Temporary Assistance Program (ATAP)
- Heating Assistance





Data and Other Collaborations

- Free school lunch program
- Family Nutrition Program
- Child Care Assistance Program
 - Office of Children's Services
 - Alaska Child Care and Development Fund (CCDF) Tribal Grantees
- thread
 - Alaska Early Care and Learning Data Dashboard Project
 - Temporary link: bit.ly/alaskadashboard



Presenting the Alaska Early Care and Learning Data Dashboard

This site presents statewide and borough/census area-level early care and learning data.

This site may be used

to explore and compare information by borough/census area and statewide. Additional information about the data is available by clicking on and hovering over images throughout the site.



Metrics Presented

Supply and Demand for Early Care and Learning Services

- Children potentially in need of early care and learning services (parents work or would work if care was available)
- Children receiving early care and learning services by someone other than a parent or a guardian
- In licensed services
- In informal services
- Need for services beyond available supply

Cost of Licensed Early Care and Learning Services

- Average cost of licensed services
- Cost of services, as a percentage of household income
- Cost as a percentage of income for married, single female, and single male households

School Readiness

- Percentage of students who meet 11 of the 13 Alaska Developmental Profile goals

A project of **thread** connecting early care & education to alaska

thread works to advance access to affordable, high quality early care and learning.

www.threadalaska.org

Providing health coverage to Alaskans in need

Margaret Brodie

DHCS Medicaid Director

Barbara Hale

Children's Health Insurance Program (CHIP)

Manager (Presenter)



Keep Your Child's Future Bright
Visit your Healthcare Provider
on Time Every Time



Well Child Schedule

3-5 DAYS	1 MONTH	2 MONTHS	4 MONTHS	6 MONTHS	9 MONTHS	12 MONTHS	15 MONTHS	18 MONTHS	24 MONTHS	30 MONTHS	36 MONTHS	Yearly From Ages 4-20 years
----------	---------	----------	----------	----------	----------	-----------	-----------	-----------	-----------	-----------	-----------	--------------------------------------



HEALTH CARE SERVICES



Early Periodic Screening Diagnostic & Treatment

For children and adolescents

- Covered by Medicaid & CHIP
- EPSDT program covers all **medically necessary services** regardless of whether they are in the State Plan

Medical

Hearing

Developmental screening

Vision

Immunizations

Dental

Behavioral health and substance misuse

Translation

Transportation



Leverage, Report, Strategize

- Partnerships to streamline efforts
 - Public Health, Women's Children & Family Health
 - Pediatric Children's Quality Measures
 - Chance to leverage funds
 - Enhanced rates
 - For all children
- Medicaid/CHIP child participation rates
 - Measuring in spirit of SB74





Public Health - Early Childhood Health Programs

Presenters: Rebekah Morisse, WCFH Section Chief
Tim Struna, PHN Section Chief

Women's, Children's & Family Health (WCFH)

Programs for pregnant women and their children

Public Health Nursing

A local presence throughout Alaska; protects and improves the health of young Alaskans

Chronic Disease Prevention and Health Promotion

Programs to help Alaskans live longer healthier lives, like the Quitline

Epidemiology

Keeps young Alaskans safe from communicable diseases, injuries and other health hazards





Division of Public Health

- Obesity Prevention
- Maternal, Infant & Early Childhood Home Visiting
- Parents as Teachers
- Early Childhood Comprehensive Systems (ECCS)
- Newborn Screening
- Immunizations
- Lead screenings
- Safe Sleep
- Targeted outreach to high-risk families



Alaska Obesity Prevention and Control Program

Works with early care and education programs to help Alaska's young children grow up to be a healthy weight and be ready to learn

- Training and resources for Early Care & Education (ECE) providers
- Obesity Prevention-ECE Work Group

DPH, Obesity Prevention and Control Program

Child Care Program Office (CCPO)

Child and Adult Care Food Program (CACFP)

Women, Infants, and Children (WIC)

Head Start

Thread

Municipality of Anchorage

UAA/UAF





Maternal, Infant & Early Childhood Home Visiting

- Federally-funded, voluntary program
 - Provides comprehensive services to at-risk families
 - Strengthens and improves maternal and newborn health outcomes
- Uses evidence-based practices:
 - the Nurse-Family Partnership model (RNs)
 - Proven return on investment: \$1 saves up to \$5.70





Parents as Teachers

- Family education & parent support home visiting program to:
 - Increase parent knowledge of early childhood development and improve parenting
 - Detect developmental problems early on in development
 - Prevent child abuse and neglect
 - Increase school readiness
- Collaboration with DEED
 - Currently funds 4 federally funded grantees
 - Serves Anchorage, Juneau, Hoonah, Haines, Kodiak, Kake, and others





Early Childhood Comprehensive Systems (ECCS)

- ECCS goals are to:
 - Enhance
 - Improve outcomes in children's developmental health and family well-being
- Focus is to increase evidence-based developmental screening
- Communities – Kodiak, Mat-Su, and Nome
- Partnership with Help Me Grow Alaska
- Federally funded





Screening services

- Newborn screening (required by State statute; funded by federal grants and fees)
 - **Bloodspot Screening**
for conditions that can cause serious health complications or death if not identified and treated early
 - **Hearing Screening**
by one month of age; diagnosis by 3 months; early intervention services by 6 months
- Pediatric Specialty Clinics
 - Autism/Neurodevelopmental screening and diagnosis
 - Metabolic Clinic for metabolic genetic disorders
 - Services not available elsewhere
 - Funding: federal and mental health general funds



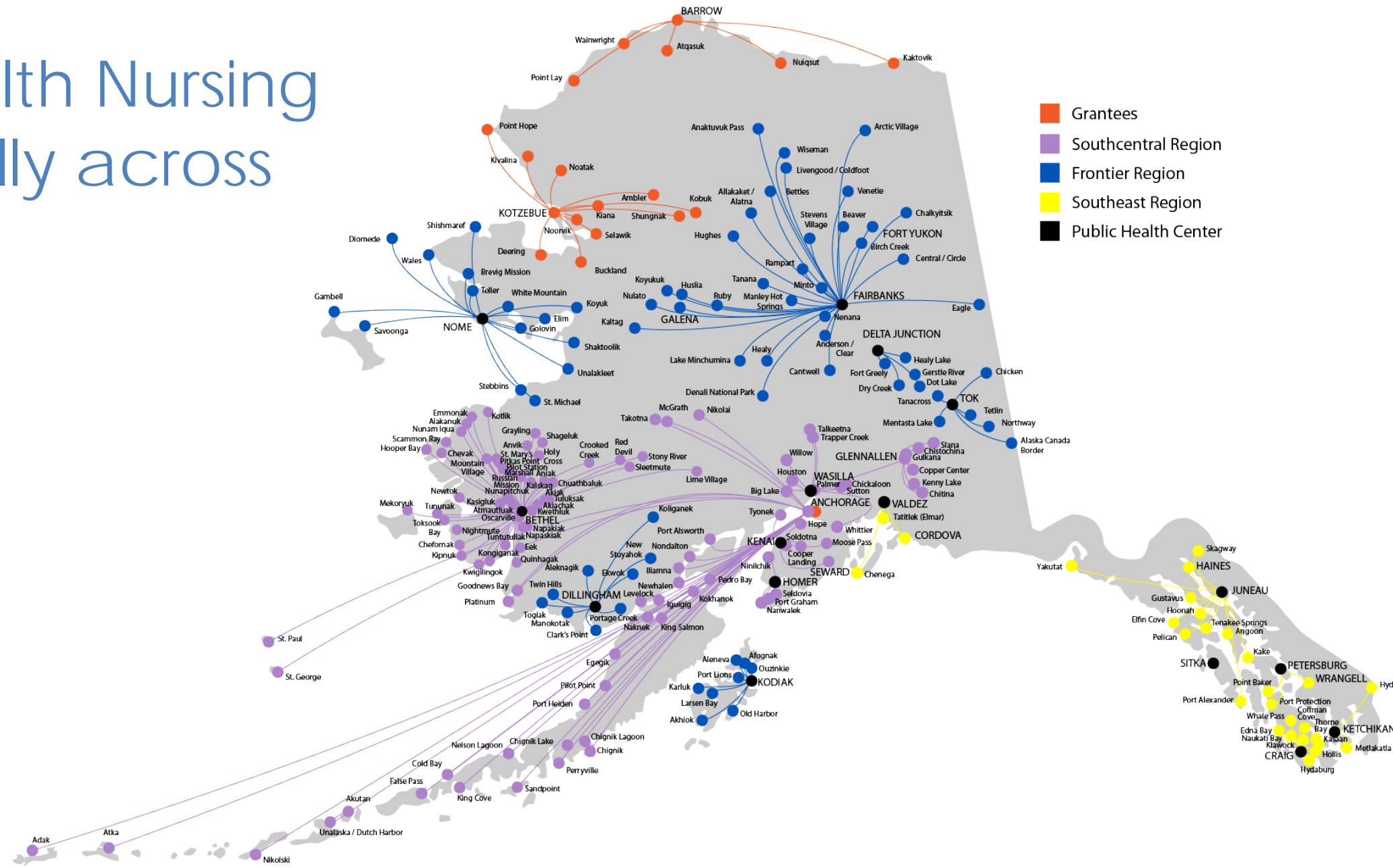


Maternal and child health data collection and analysis

- Pregnancy Risk Assessment Monitoring System (PRAMS) & Childhood Understanding Behaviors Survey (CUBS)
- Alaska Birth Defects Registry (ABDR)
- Maternal Child Death Review
- Alaska Surveillance of Child Abuse and Neglect (SCAN)
 - Focus on data over many years gives clearer picture:
1 in 3 children born in Alaska reported to OCS before age 8 years



Public Health Nursing works locally across Alaska

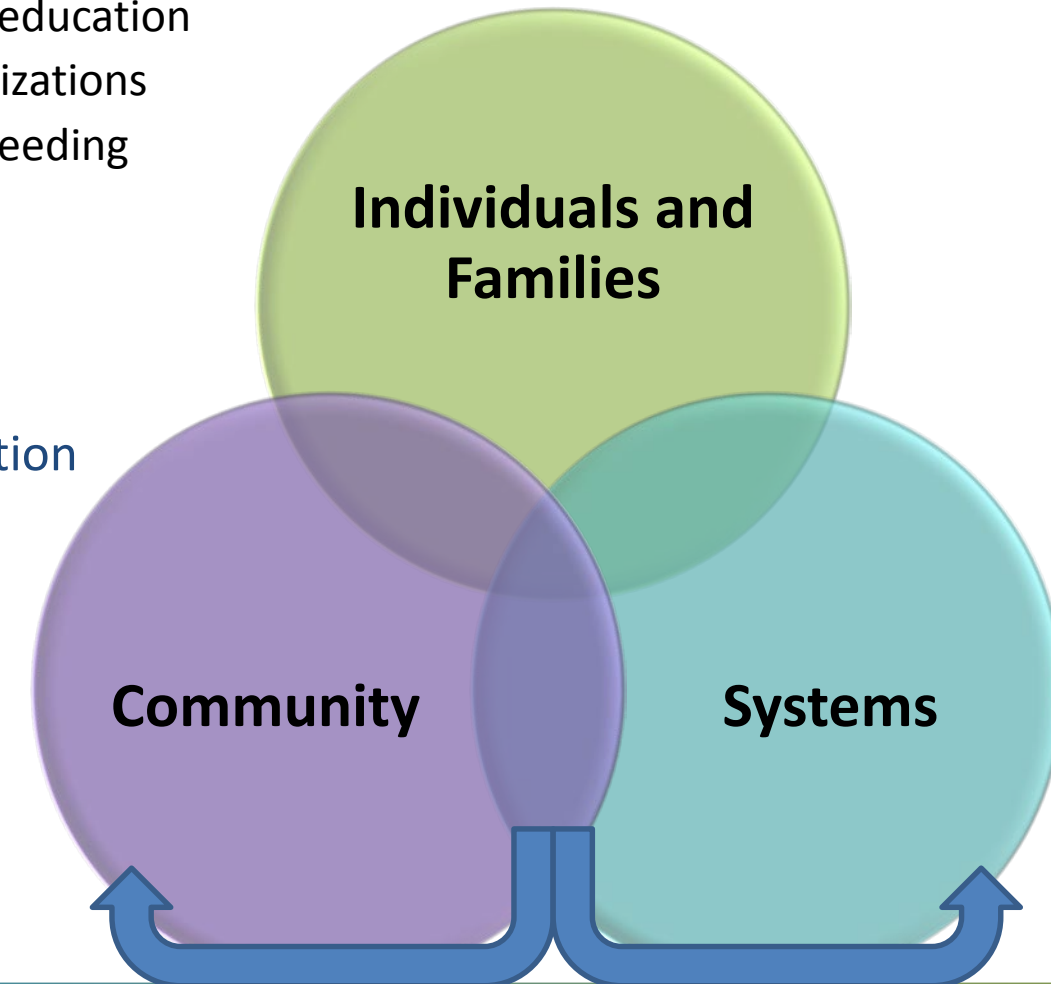


Public Health Nursing Direct Services

- Community resources connections
- Well child exams for children 0-6
- Home visiting services for high-risk families
- Identify, refer, and follow-up for children experiencing physical, developmental, or social-emotional disorders
- Family education
- Immunizations
- Breastfeeding

2017 expansion early childhood efforts:

24,537	Child/family visits, 81% include DV screening/education
15,772	children's health
1,884	Pregnancy and postpartum
824	Well Child screening
1,561	Developmental screening
6,874	Immunizations child 5 years <
55	Referrals to OCS
657	Follow-up to provider referrals



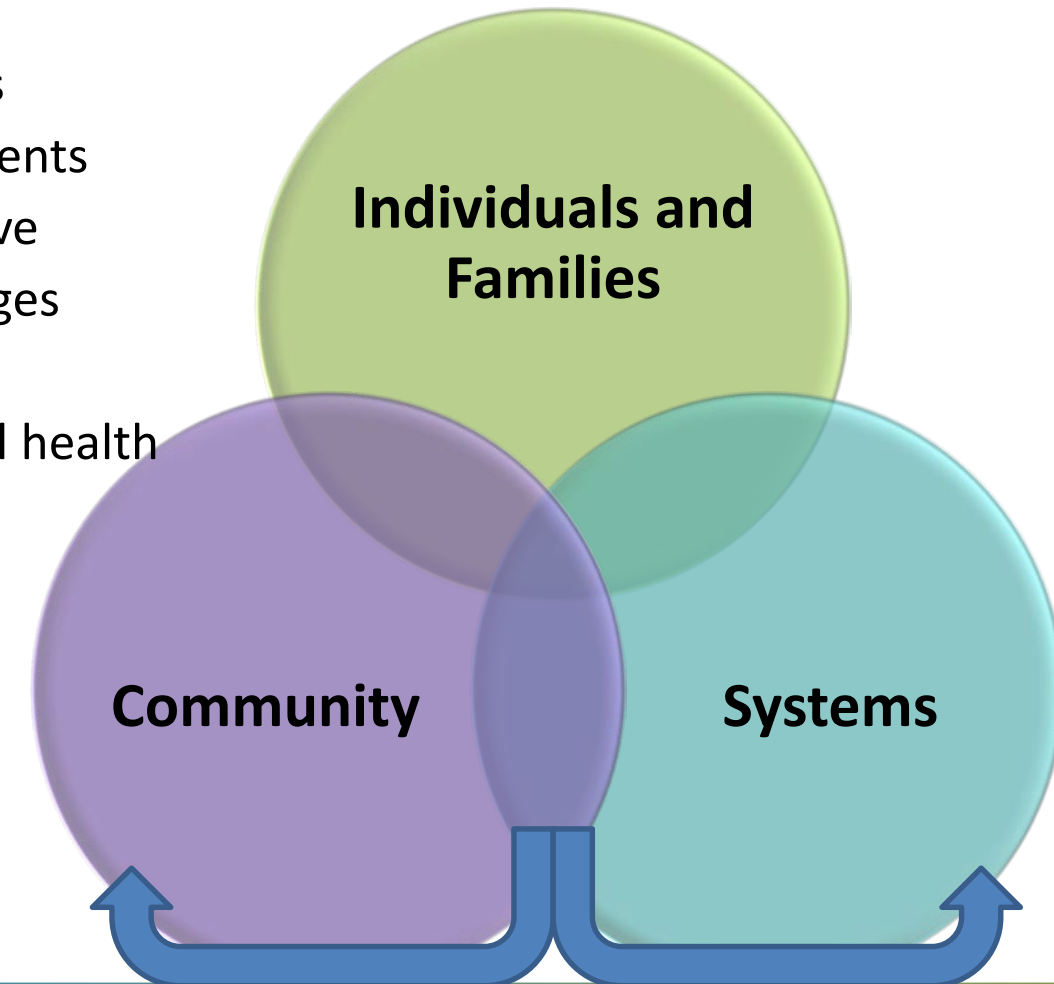
Public Health Nursing Community Work

PHNs work statewide to:

- Educate on Developmental assets, health, wellness, and life skills
- Strengthen community-based efforts to provide supports for parents
- Work locally so kids have communities in which to grow and thrive
- Advocate for resiliency based approaches to local health challenges
- Lead/participate in health coalitions
- Contribute to collecting and using needs assessments and critical health data

2017 expansion early childhood efforts:

- **1,525** community events related to children with at least **62,395** community members targeted
- Work with **7,396** local partners





Senior & Disabilities Services

We promote health, well being and safety for individuals with disabilities, seniors and vulnerable adults by facilitating access to quality services and supports that foster independence, personal choice and dignity.



Duane Mayes | Director

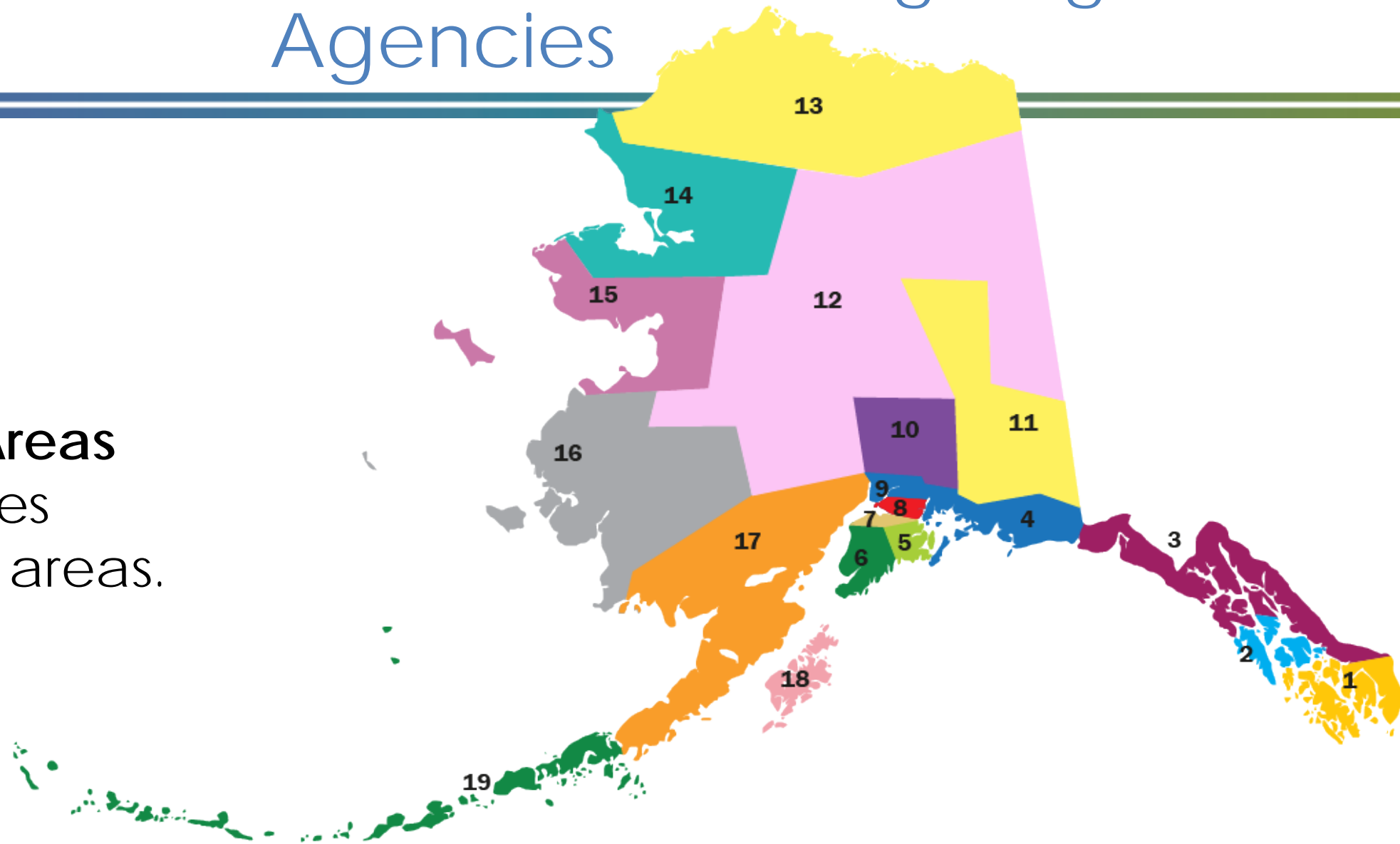
Maureen Harwood | Chief of Developmental Programs



Local Early Intervention/Infant Learning Program Agencies



EI/ILP Services Areas
16 EI/ILP agencies
serve 19 service areas.





IDEA, Part C Overview

Congress established this program in 1986 in recognition of "an urgent and substantial need" to:

- enhance the development of infants and toddlers with disabilities;
- reduce educational costs by minimizing the need for special education through early intervention;
- minimize the likelihood of institutionalization, and maximize independent living; *and*,
- enhance the capacity of families to meet their child's needs.





Minimum Components Required by IDEA

- Comprehensive child find and referral system
- Public awareness program focusing on early identification of infants and toddlers with disabilities and providing information to parents of infants and toddlers through primary referral sources
- Central directory of public and private EI services, resources, and research and demonstration projects
- Comprehensive system of personnel development, including the training of paraprofessionals and the training of primary referral sources



34 CFR §303.302 Comprehensive Child Find System

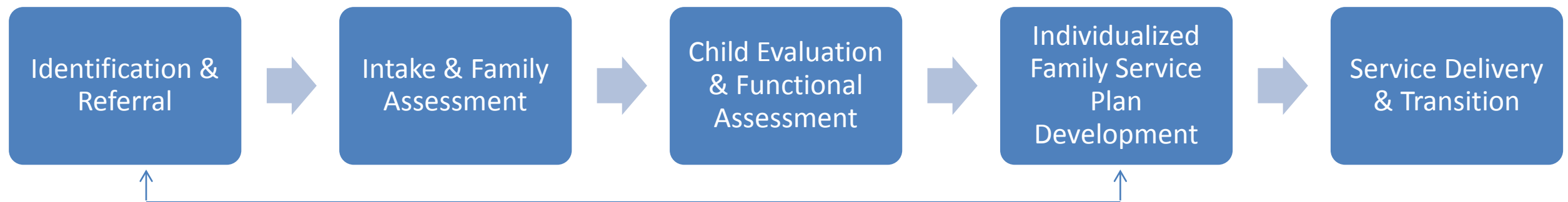
Scope of Child Find:

All infants and toddlers with disabilities in the State who are eligible for early intervention services are identified, located, and evaluated including:

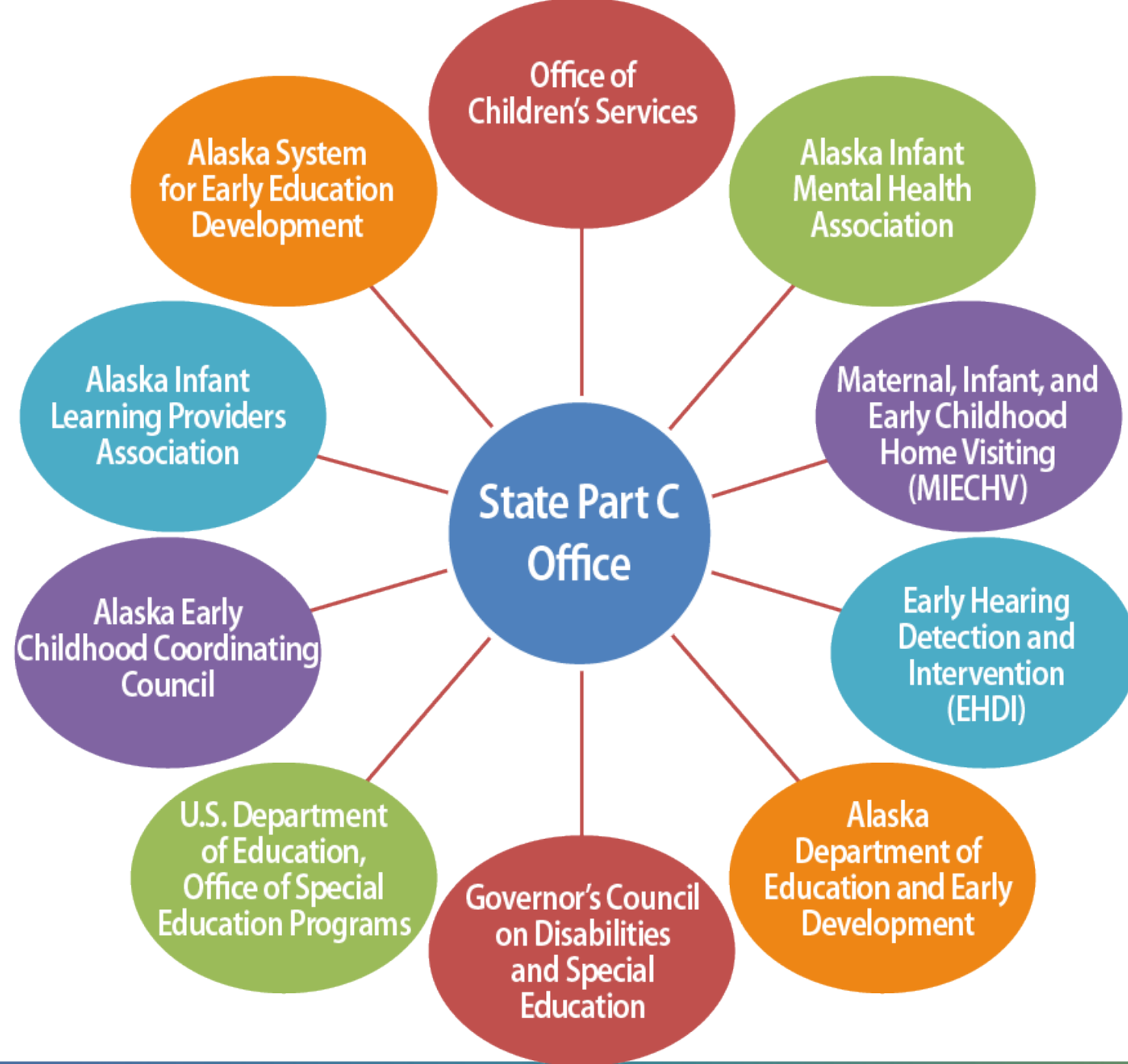
Coordination:

- Child Find System must be coordinated with all other major effort efforts to local and identify children by other agencies with the assistance of the ICC.
- Child Find System is coordinated with:
 - Program authorized under Part B
 - Maternal, Infant, and Early Childhood Home Visiting Program (MIECHV)
 - Early Periodic Screening, Diagnosis, and Treatment (EPSDT)
 - Programs under the Developmental Disabilities Assistance and Bill of Rights Act of 2000
 - Head Start and Early Head Start
 - SSI program under Title XVI of the SS Act
 - Child protection and child welfare programs under the state agency responsible for administering the Child Abuse Prevention and Treatment Act (CAPTA)
 - Early Hearing Detection and Intervention (EHDI)
 - Children's Health Insurance Program (CHIP)
 - Child care programs in the state





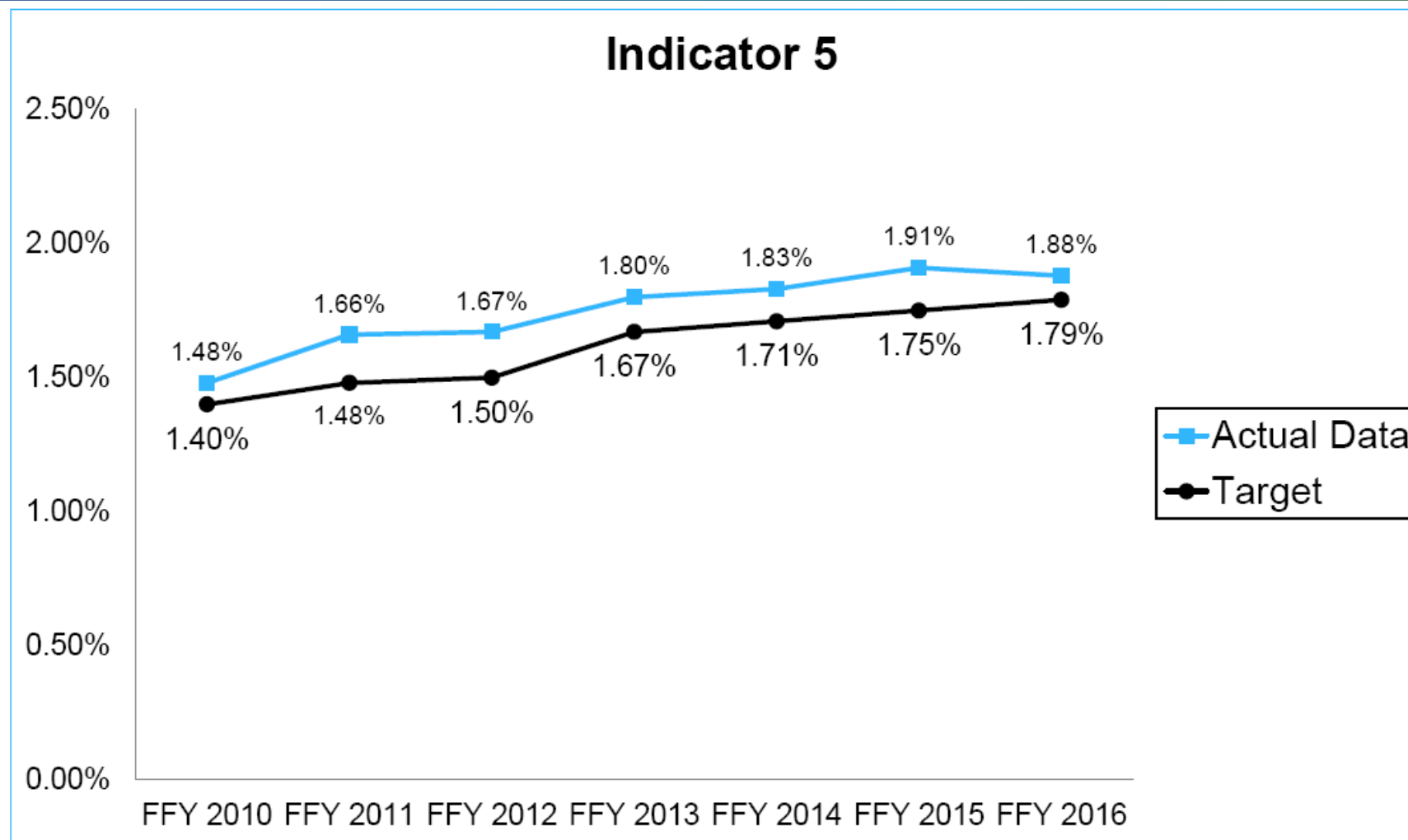
State Partnerships



Local Partnerships

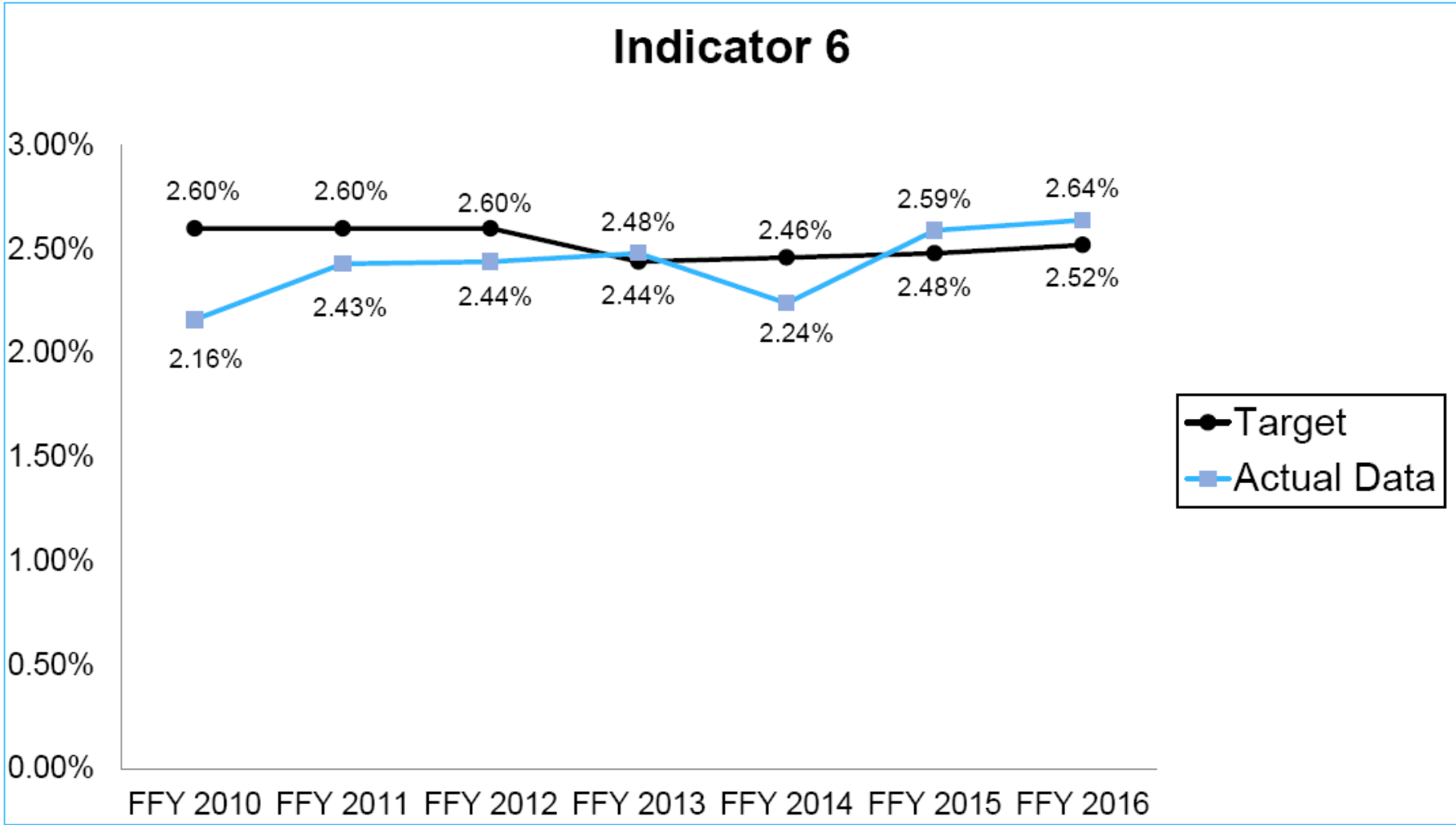


Child Find: Percentage of Birth to One Population Served





Child Find: Percent of Birth to Three Population Served





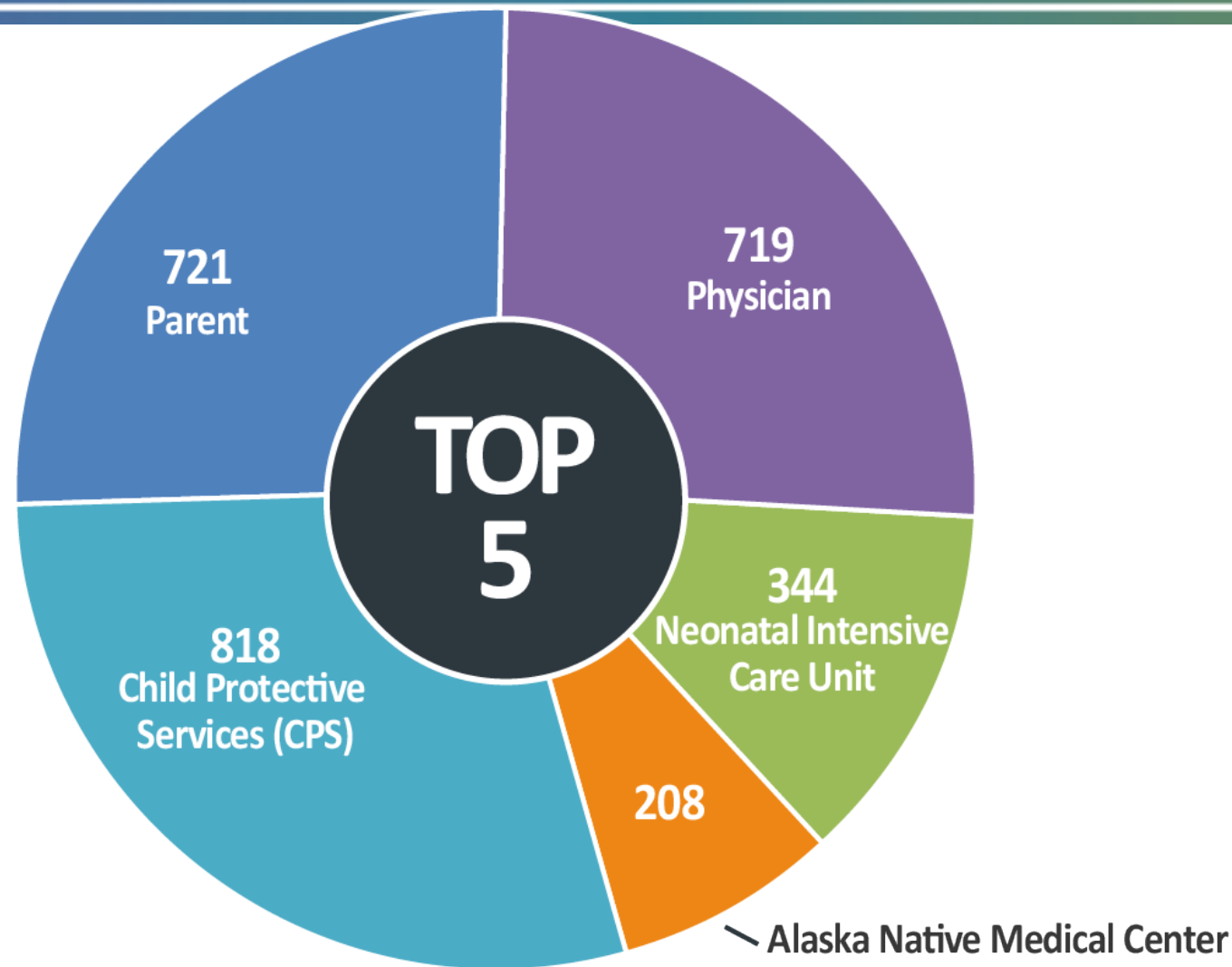
Program Referral Data

Activity	FY17
Referrals	3547
Evaluations	1,855
New Enrollments	1,108

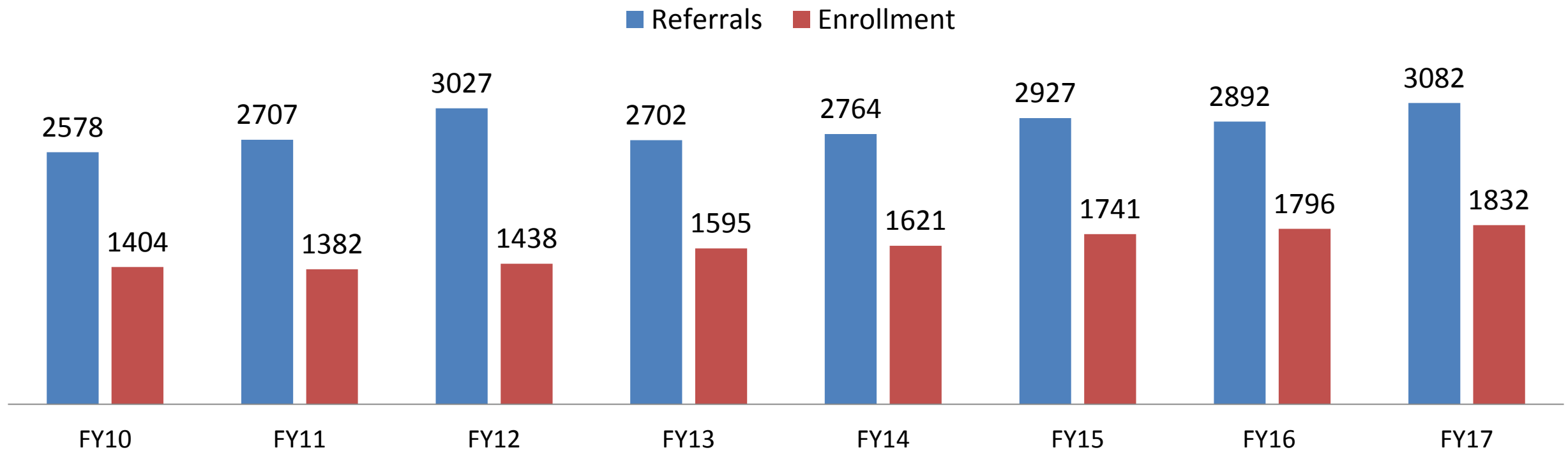


Top 5 Referral Sources in FY17

Alaska Part C
received a total
of 3,547 referrals
in FY17



Referrals and Total Enrollment in FY17



Average age of a child's first referral: 13 months

Referrals have increased by 20% since FY10 while enrollment has increased by 30% since FY10





Interagency Coordinating Council

- IDEA requires that each state establish a state Interagency Coordinating Council (ICC), appointed by the Governor of the state, for the purpose of advising and assisting the Lead Agency in the implementation of the Part C program. The membership of the Council is specified in statute and regulations.
- Alaska Part C's ICC is the Governor's Council on Disabilities and Special Education's Early Intervention Committee
- At least one parent member must be a parent of an infant or toddler with a disability or a child with a disability aged six years or younger.





Alaska Part C Database Automated Interfaces

CHILD PROTECTIVE SERVICES

- ALASKA DEPT. OF EDUCATION AND EARLY DEVELOPMENT
- PROGRAM FOR INFANTS AND CHILDREN
- ALASKA NATIVE MEDICAL CENTER
- EARLY HEARING DETECTION AND INTERVENTION





What Families Say

"[ILP provider] is amazing. Without her I'm not sure how my family and I would have survived the last year. She has been our biggest support. Knew exactly when to intervene on my little one's development. Very knowledgeable."

"[ILP] has been a blessing! The support and knowledge has come at the perfect time. They are always there to help, listen, and advise."

"Our ILP provider is fantastic. My son wouldn't be where he is now without them."

"[ILP] has been an invaluable resource for us and we are extremely grateful for every therapist we've worked with. They are all full of great ideas, information, and links to resources. Our son's development would be much more delayed had we not had [ILP] to help us from the beginning."



Behavioral Health

Partners promoting healthy communities

Randall Burns | Director

Brita Bishop | Quality Assurance
Section Administrator





Activities for Young Children and their Families

- Prevention Coalitions – partnering with communities to strengthen families
- Provider Network – treating young children with serious emotional disturbances and their families
 - Outpatient services – mental health and substance use
 - Residential substance use services for women and children
 - Therapeutic family-based treatment homes
 - Northern Alaska Shelter Care – children birth to 5
 - Gap: No residential psychiatric treatment center beds for children under 12





Activities for Young Children and their Families

- Other DBH Program Supports
 - Housing
 - Peer Navigation and Family Support Services
 - Flexible Funding “Individualized Services Program”
- Other Cross System Work
 - Complex Behaviors Collaborative
 - Improving Child Welfare Outcomes
 - Housing Vouchers
 - Neo-natal Abstinence Syndrome





System Development for Young Children and their Families

- Training and Technical Assistance – supporting system development to expand access and improve treatment
 - Alaska Child Trauma Center
 - Cross walk to qualify young children for Medicaid services
 - Yearly training conferences
- 1115 Medicaid Waiver – Behavioral Health Demonstration Project
 - Priority populations include at-risk children and families
 - Implement evidence-based screening tools to identify behavioral health needs at all ages
 - Expand in-home and mobile response services for children and families



Office of Children's Services



Vision:
Safe children, strong families

Christy Lawton | Director



Strengthening Families

Four ideas behind Strengthening Families

1. Build protective and promotive factors, not just reducing risk
2. An approach – not a model, a program or a curriculum
3. Change relationship with parents
4. Align practice with developmental science



Family Support and Preservation Services

Family Support Services

Community-based primary prevention services designed to:

- Increase the strength and stability of families, particularly those with young children.
- Increase parents' competence in parenting skills and enhance child development.
- Services include: in-home supports; ongoing family assessment; facilitated access to resources such as transportation; service coordination; and parent education and support.

Family Preservation Service

Intensive services designed for families when children are at risk of future out-of-home placement in order to keep families together and to create a safe, stable and supportive family environment.

- Grantees provide coordination of services to meet the identified needs of the family, including transportation; service plan implementation and monitoring; assessment of family progress; and parenting education and support.



Family Support and Preservation Services

Family Support – Current Grantees

- **Alaska Family Services:** Wasilla, Palmer and surrounding areas
 - **Cook Inlet Tribal Council:** Anchorage
 - **RurAL CAP:** Anchorage
 - **Frontier Community Services:** Soldotna and Kenai
 - **Nome Community Service :** Nome
 - **Resource Center for Parents and Children:** Fairbanks
 - **Sprout Family Services:** Homer and surrounding areas
-
- ▶ SFY17: 432 children & 268 families served
 - ▶ Total Funding: \$550,000. Funded by Federal Grant, Community Based Child Abuse Prevention (CBCAP)
 - ▶ Target Population: Alaska families who do not have an open case with OCS
 - ▶ Families can self-refer, or be referred by the community.
 - ▶ Grantees must use evidence informed approaches, such as Parents as Teachers



Family Support and Preservation Services

Family Preservation “Circle of Support” Grantees

- **Nome Community Center:** Nome
 - **Alaska Family Services:** Wasilla, Palmer and surrounding areas
 - **Cook Inlet Tribal Council:** Anchorage
 - **Women in Safe Homes:** Ketchikan, Metlakatla
 - **Resource Center for Parents and Children**
- ▶ Target Population: Families referred by OCS only.
 - ▶ Grant requires warm hand off where the OCS worker, the family and the grantee meet together for the service intake, in order to promote family engagement.



Alaska Child Welfare Tribal Compact

“Alaska Native Tribes know what is best for their children, Alaska Native families and communities are the best places for their children to thrive, and Alaska Native children steeped in the love, values, and culture of their Tribe have the best chance of being healthy, engaged members of society.”

Whereas clause, pg. 3, Alaska Tribal Child Welfare Compact



The Compact Creates Opportunities

For change and innovation

- Early intervention and prevention services through the sharing of Protective Services Reports
- Tribes/Tribal Organizations will have the opportunity to reach out to support and offer services to families more upstream to reduce further maltreatment



Child Abuse Prevention and Treatment Act (CAPTA)

- States must ensure all children less than 3-years of age who are involved in a substantiated case of child abuse or neglect are referred to the Infant Learning/Early Intervention program
- **Infant Learning/Early Intervention Program**
Provides home-based child development services to children aged birth up to 3-years of age, who have moderate to severe mental or physical handicapping conditions or are at risk for developing these conditions. For each eligible child the infant learning program must develop an Individualized Family Service Plan (IFSP) for providing services.



AECCC

Alaska Early Childhood Coordinating Council



Safe Children, Strong Families

Thank you for your commitment
to Alaska's Children

