



# Legislative Lunch and Learn

Alaska's Workforce Future: Career Guides Collaboration

March 31, 2025

# Alaska's Workforce Future

6 strategies for success:

- Career Awareness
- Skilled Workforce
- Retain Alaskans
- Regional Workforce
- Improve Infrastructure
- Sustainability

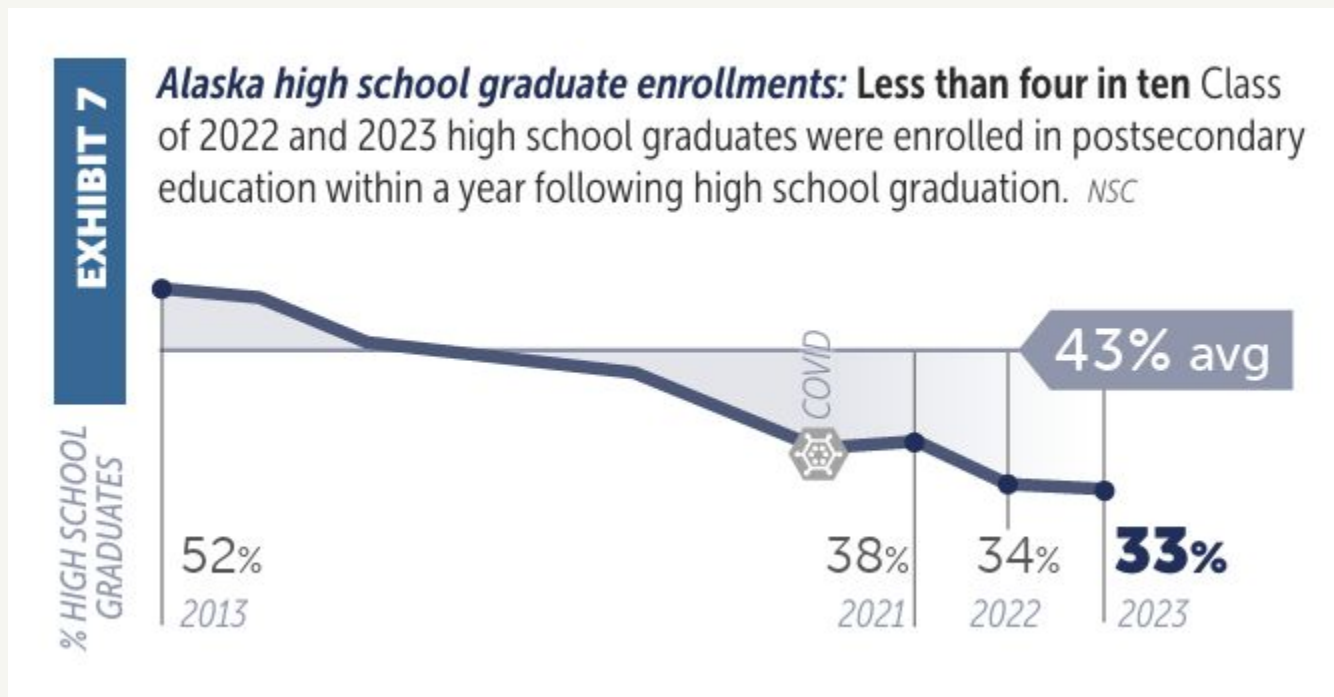


# Career Guides

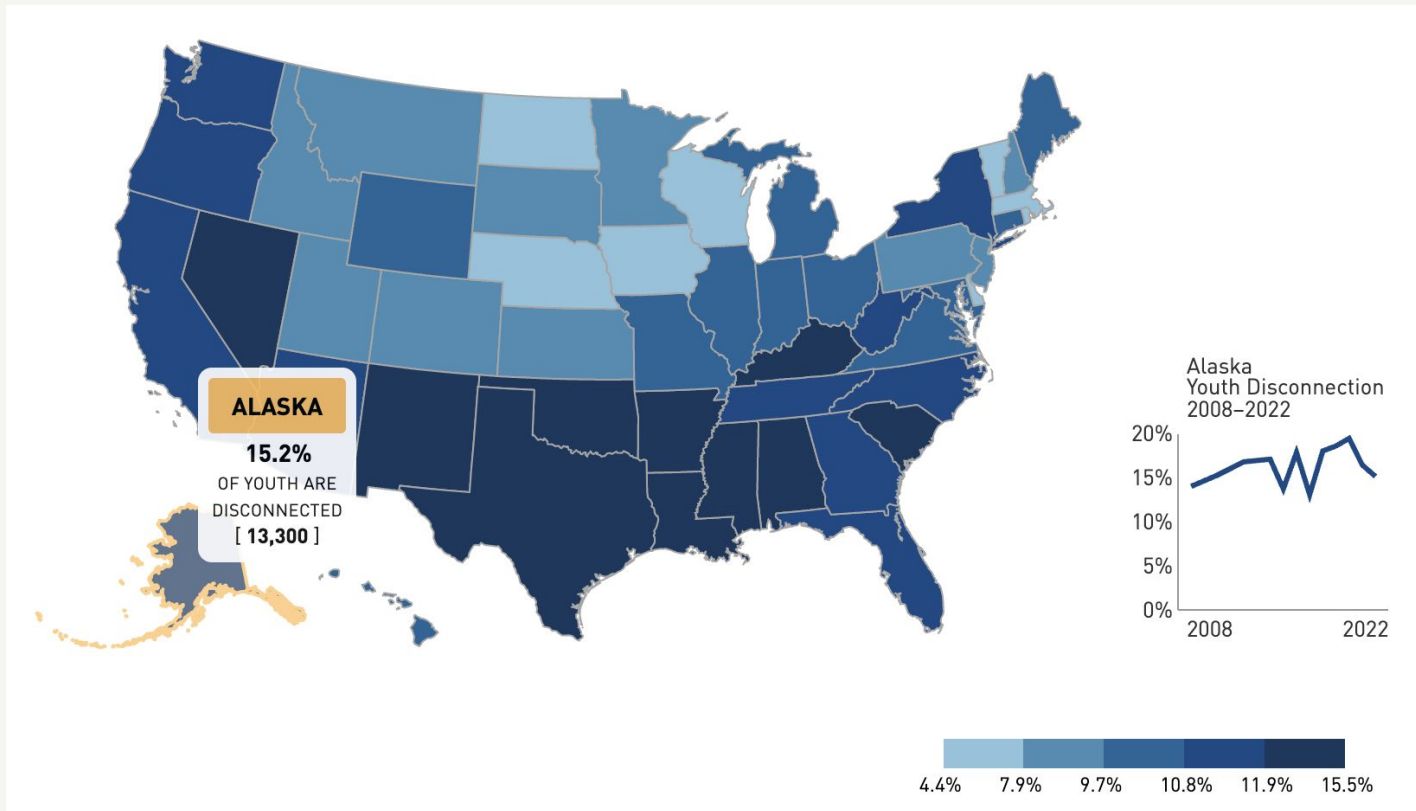
- Strengthen Career-Pathway Programs
  - Establish and expand Career Guidance initiatives
  - Consistent training for all career guides/navigators across the state
- Support Career Planning and Mentorship
  - Connect Alaska's high school students with career counseling



# The Problem:



# The Opportunity:





# A Solution:



## RECOMMENDATION:

**Fund career guides** to assist students and families with plans for their future linked to their goals and values as well as tactical steps like accessing financial aid.

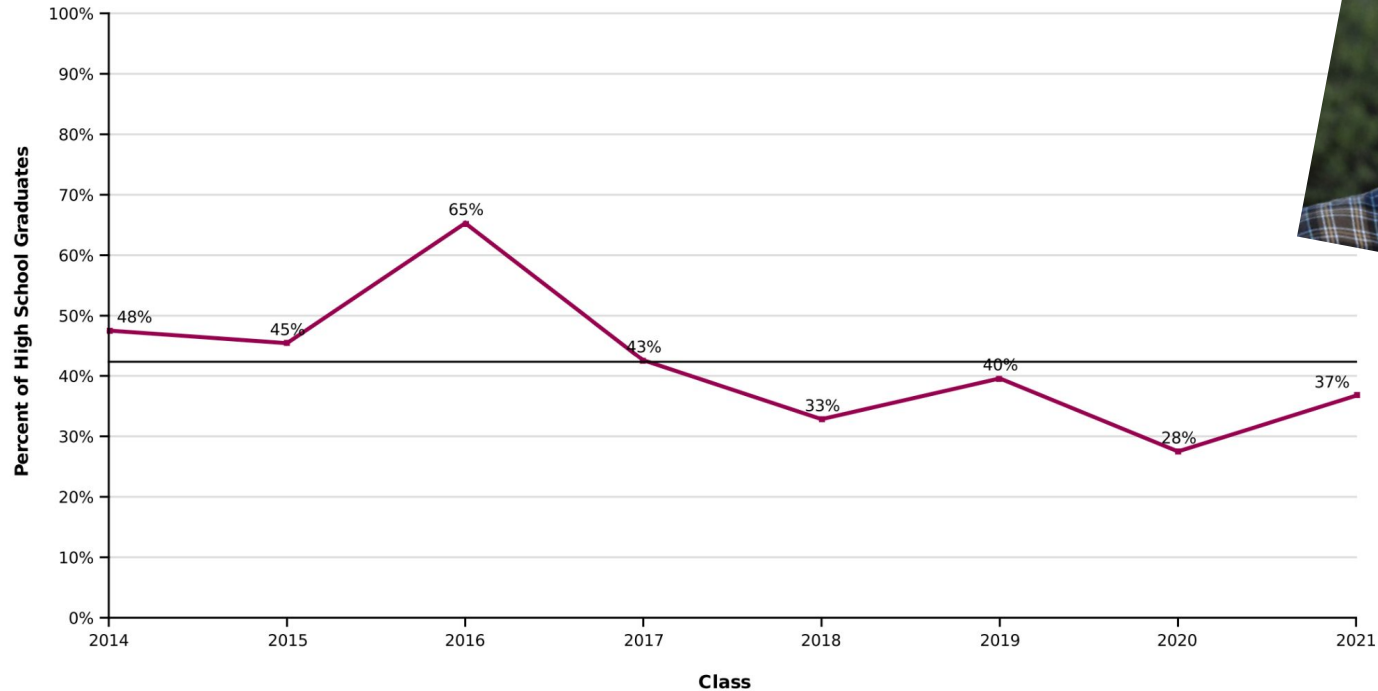


# A Solution:

Bethel Regional High School

## Percent of Students Enrolled in College the Fall Immediately After High School

Effective Date = August 18, 2022



# Alaska Career Guide Pilot Project

## REGIONAL CAREER GUIDE PILOTS

### BRISTOL BAY REGIONAL CAREER AND TECHNICAL CONSORTIUM

Bristol Bay Borough School District, Dillingham City Schools, Lake and Peninsula School District, and Southwest Region School District

### DEPARTMENT OF LABOR AND WORKFORCE DEVELOPMENT & DEPARTMENT OF EDUCATION AND EARLY DEVELOPMENT

Galena City School District, Kuspuk School District, Lower Yukon School District, and Nenana City School District, and Yukon-Koyukuk School District

### SEALASKA HERITAGE INSTITUTE

Annette Island City Schools and Hydaburg City Schools

## rootEd ALLIANCE COLLEGE & CAREER ADVISING FOR RURAL STUDENTS

### ROOTED ALLIANCE

Partnered with a philanthropic organization whose mission is to ensure every rural student graduates high school with a clear path toward career success and economic stability.

### EVIDENCE-BASED ACTIVITIES

Engage in evidence-based activities that guide students through key postsecondary planning milestones, including career planning, financial aid assistance, and pathway exploration, while tracking performance indicators like FAFSA completion to keep them on track.

### PROFESSIONAL DEVELOPMENT

Provide robust professional development for career guides and leaders through training and mentorship that support consistent, data-driven, and effective career guidance strategies.

## CAREER GUIDANCE RESOURCES & SUPPORT

### ALASKA COMMISSION ON POST-SECONDARY EDUCATION

Provides support by assisting with FAFSA completion, Alaska Performance Scholarship (APS) requirements, and the Alaska Career Information System (AKCIS), a robust platform for career exploration, post-secondary planning, and workforce readiness.

### AASB CULTURALLY AFFIRMING CAREER GUIDE COMMUNITY OF PRACTICE

Provides networking and resource support for districts, tribal entities, and partner organizations engaged in delivering culturally affirming career guidance, fostering collaboration, and sharing best practices.

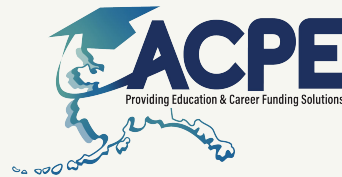
### SEALASKA HERITAGE INSTITUTE

Developed and provides support for implementation of Our Strength: Work Readiness Plan, a culturally affirming career and college preparation guide that integrates Indigenous values and personal-goal setting, including a Provider Pathway.



# Career Guide Working Group

- **Objective:** Address Alaska's Workforce Future strategy to increase awareness by expanding Career Guides and access to resources statewide
- **Strategies & Tactics:**
  - Leveraging resources, creating long-term sustainability, and increasing outcomes by partnering on initiatives
  - Engaging districts to inventory existing efforts and explore ways to strengthen future efforts
  - Developing a website of career awareness resources
  - Reporting outcomes to increase buy-in and advocate for support





The future of Alaska's workforce depends on the investments we make today. By strengthening career pathways we are ensuring that Alaskans are prepared to fill high-demand jobs and drive economic growth for generations to come.

Contact: Alaska Workforce Alliance  
Mariko "Mari" Selle  
[Mari@AlaskaWorkforceAlliance.org](mailto:Mari@AlaskaWorkforceAlliance.org)  
(907)301-2580