



# GCI Exhibit C-1

GCI Network Expansion  
Plan of ACS of Anchorage

## Legend

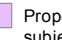
### 2016 New Build

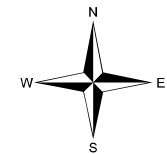
 562 Homes Passed

 GCI Existing Coverage

 ILEC Boundary

### 2017 - 2020 Expansion Plan

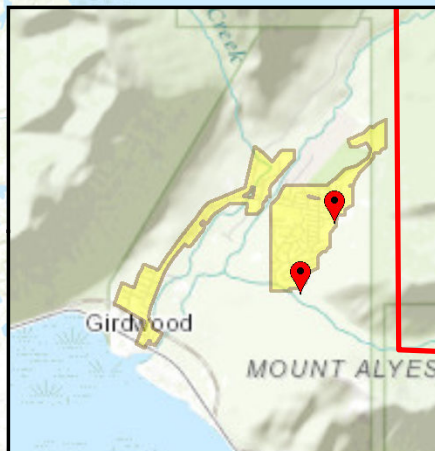
 Proposed expansion plan  
subject to available capital



OSP Design & Data Management  
5151 Fairbanks St  
Anchorage, AK 99503

Created by: Joshua Swanson  
3/31/2017 - 14-5373

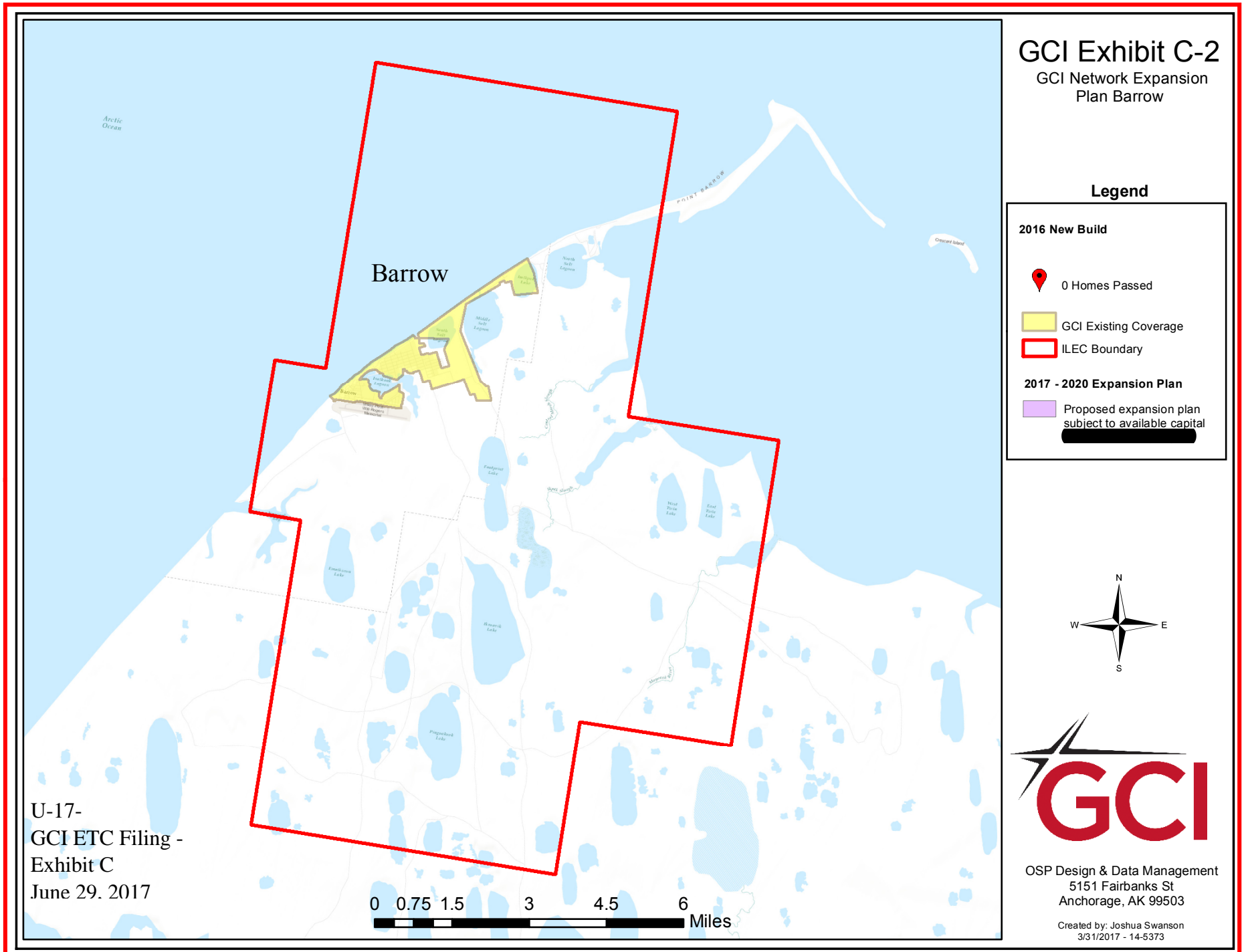
U-17-  
GCI ETC Filing -  
Exhibit C  
June 29, 2017



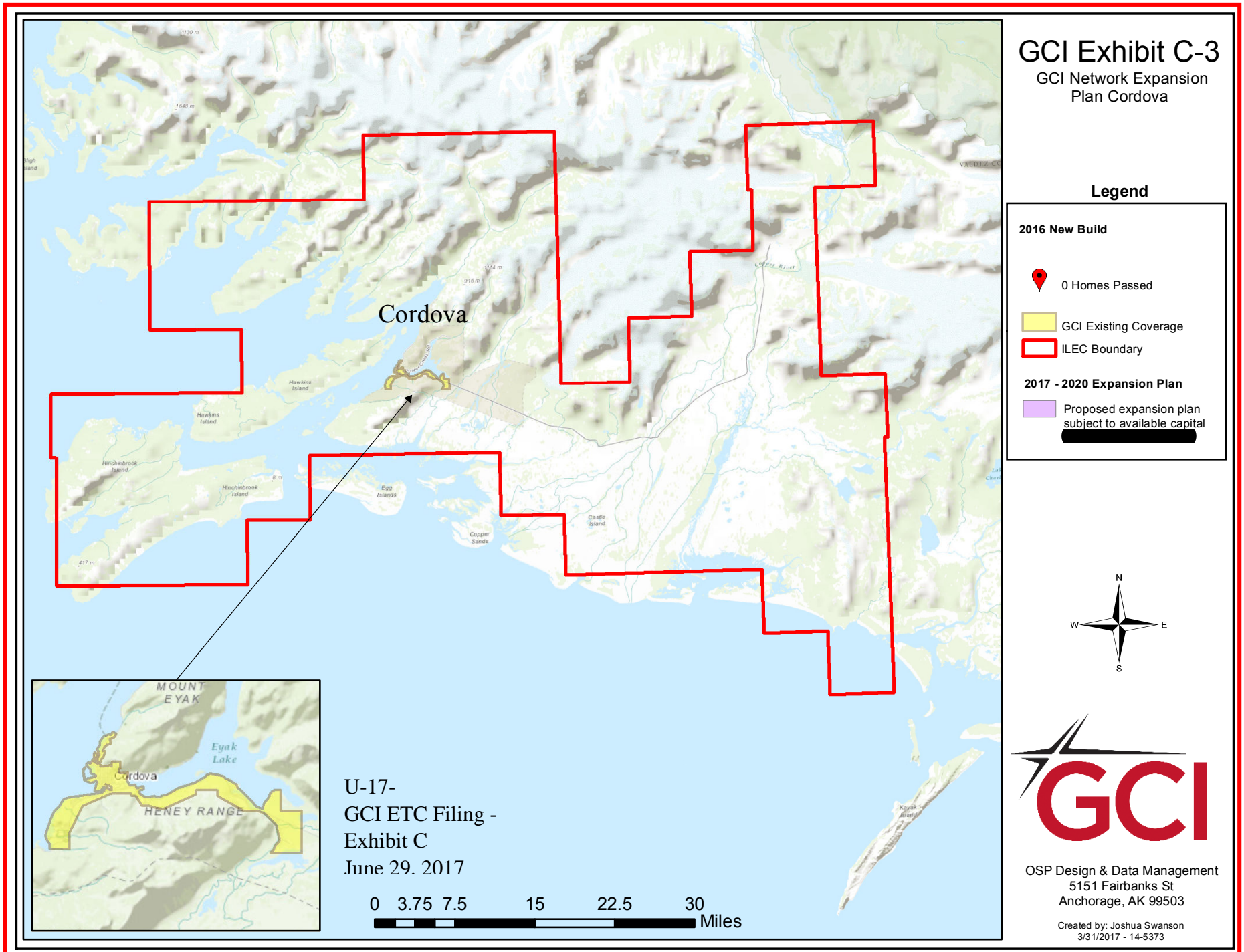
0 2.5 5 10 15 20 Miles

Girdwood

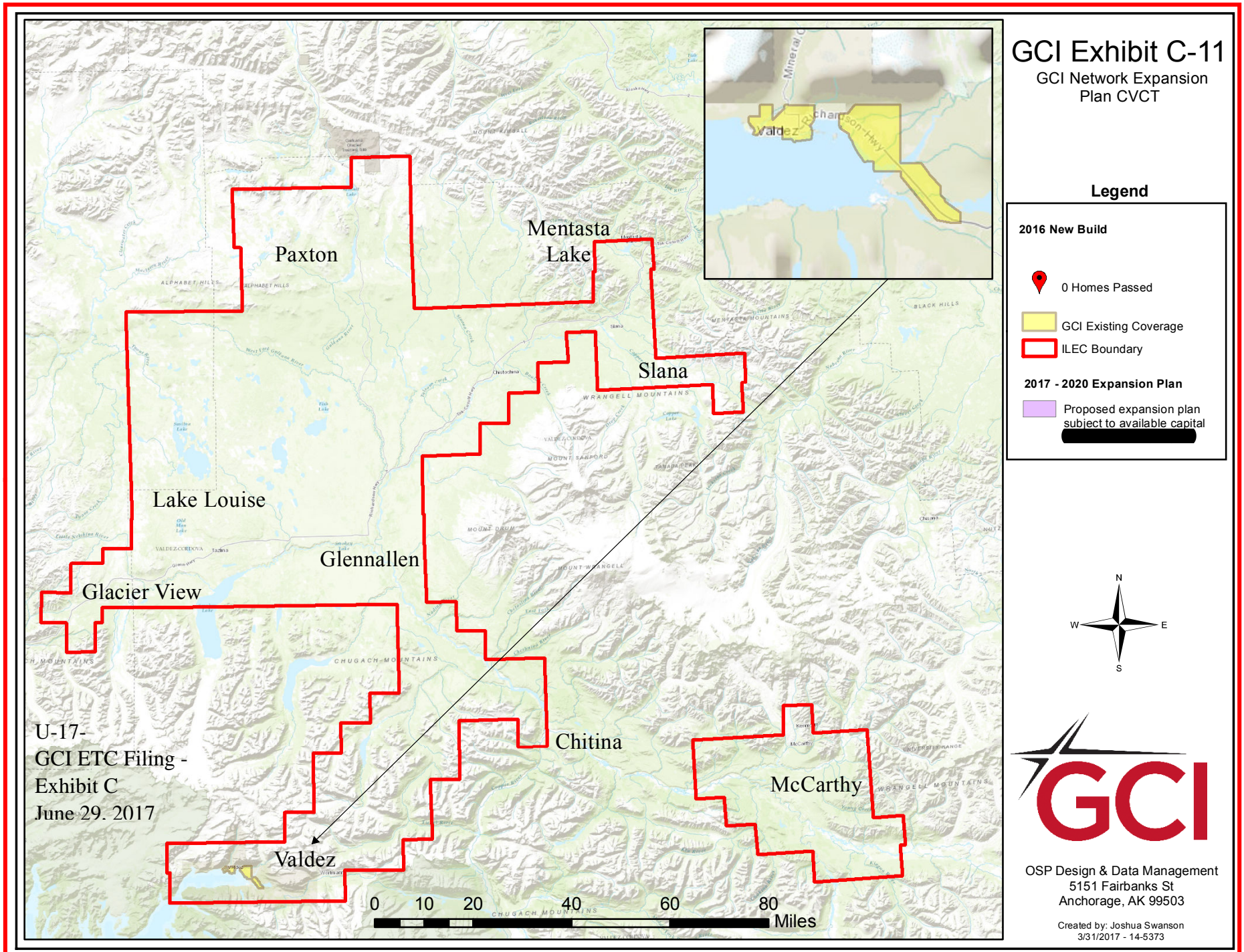
Anchorage





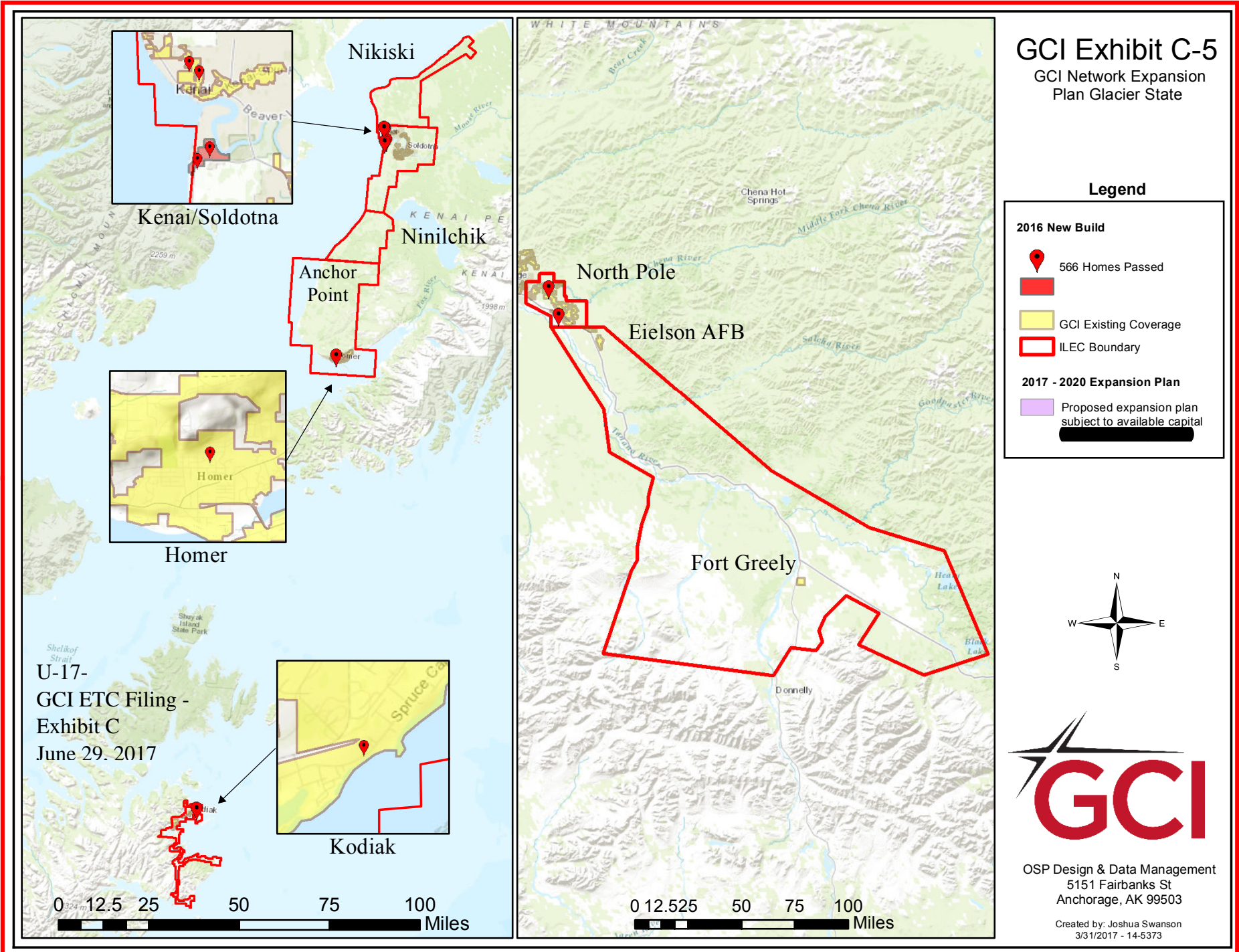








## Exhibit 5






# GCI Exhibit C-4

GCI Network Expansion  
Plan of ACS of Fairbanks

## Legend


### 2016 New Build

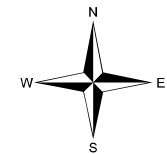
 3 Homes Passed

 GCI Existing Coverage

 ILEC Boundary

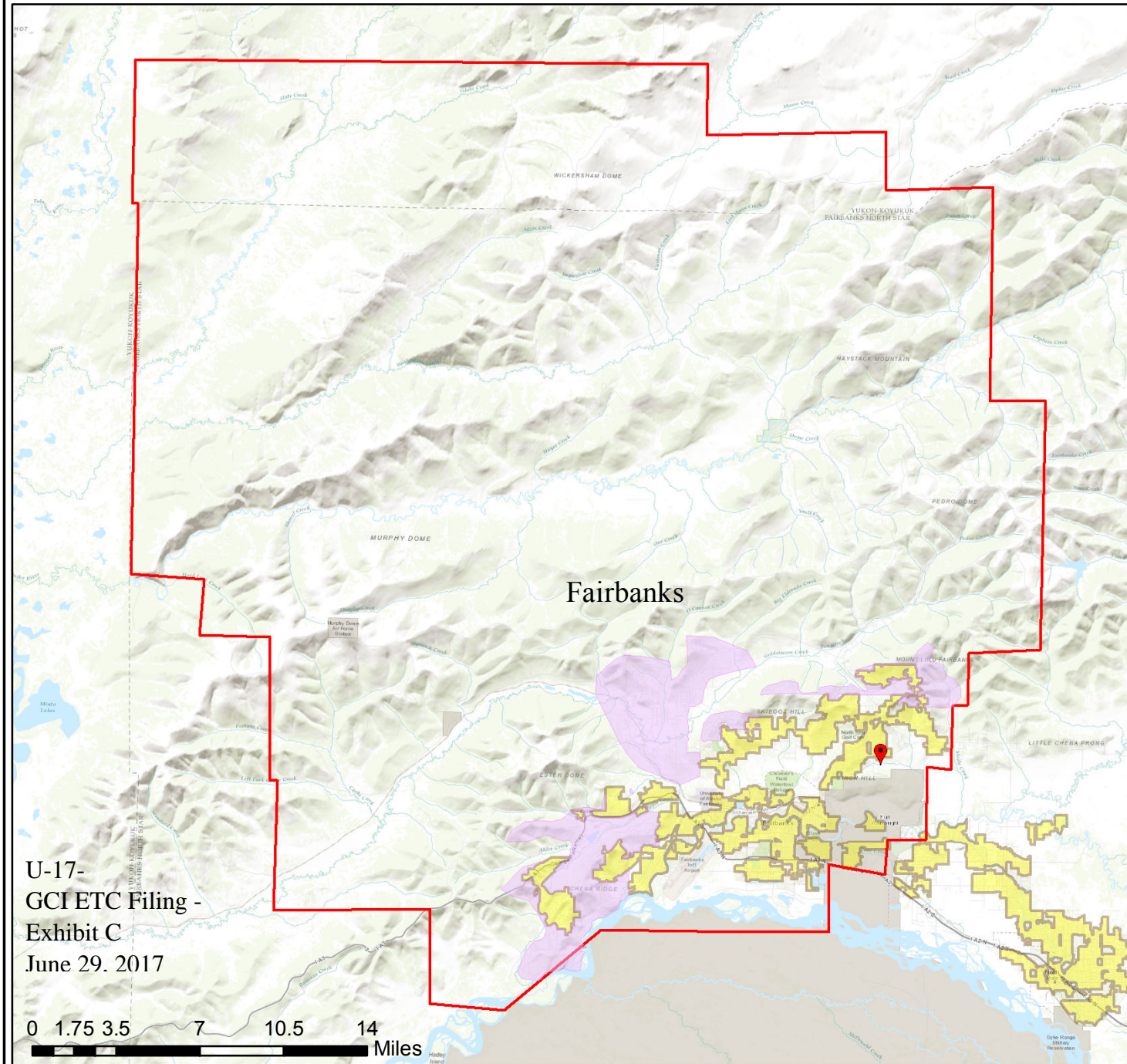
### 2017 - 2020 Expansion Plan

 Proposed expansion plan  
subject to available capital



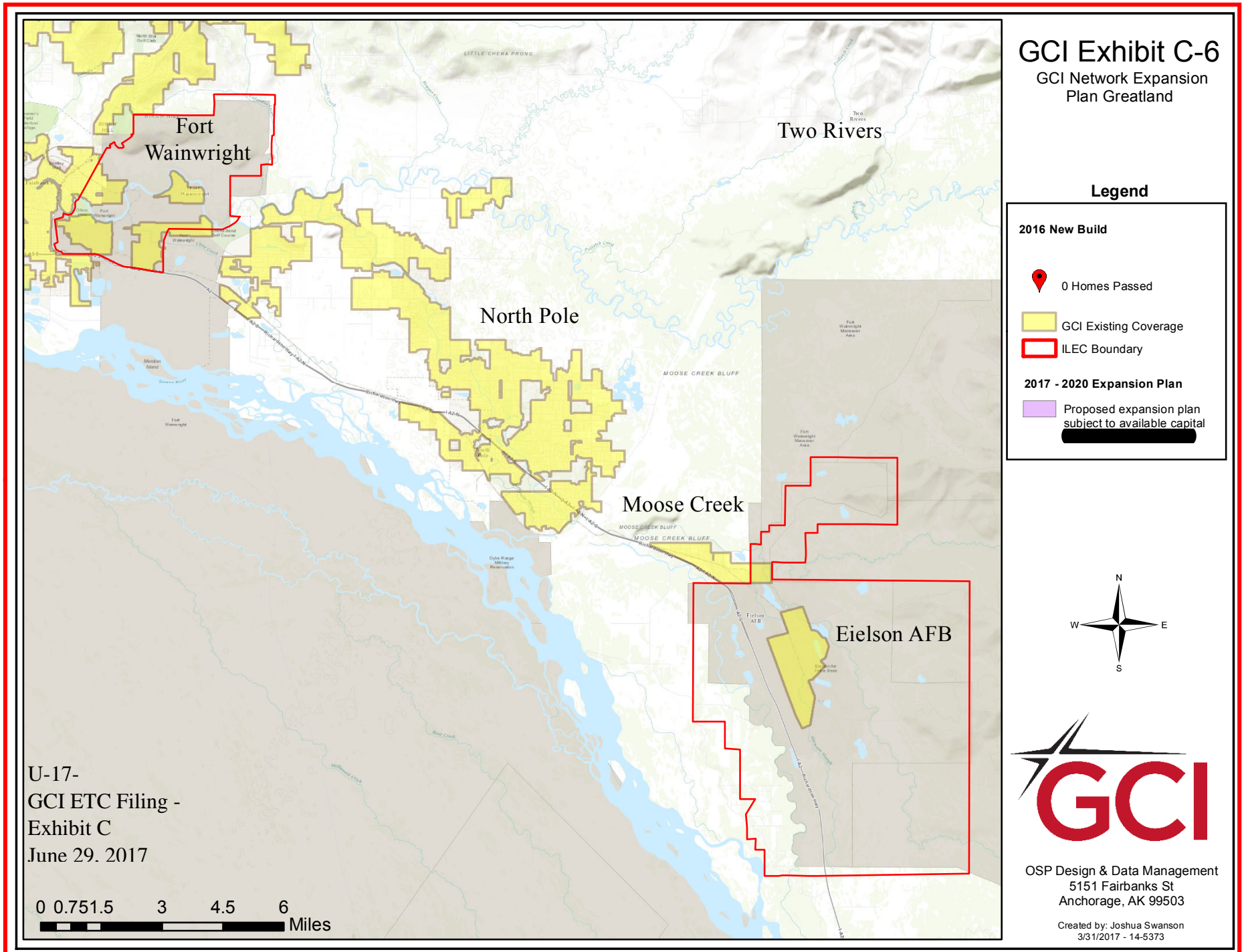
OSP Design & Data Management  
5151 Fairbanks St  
Anchorage, AK 99503

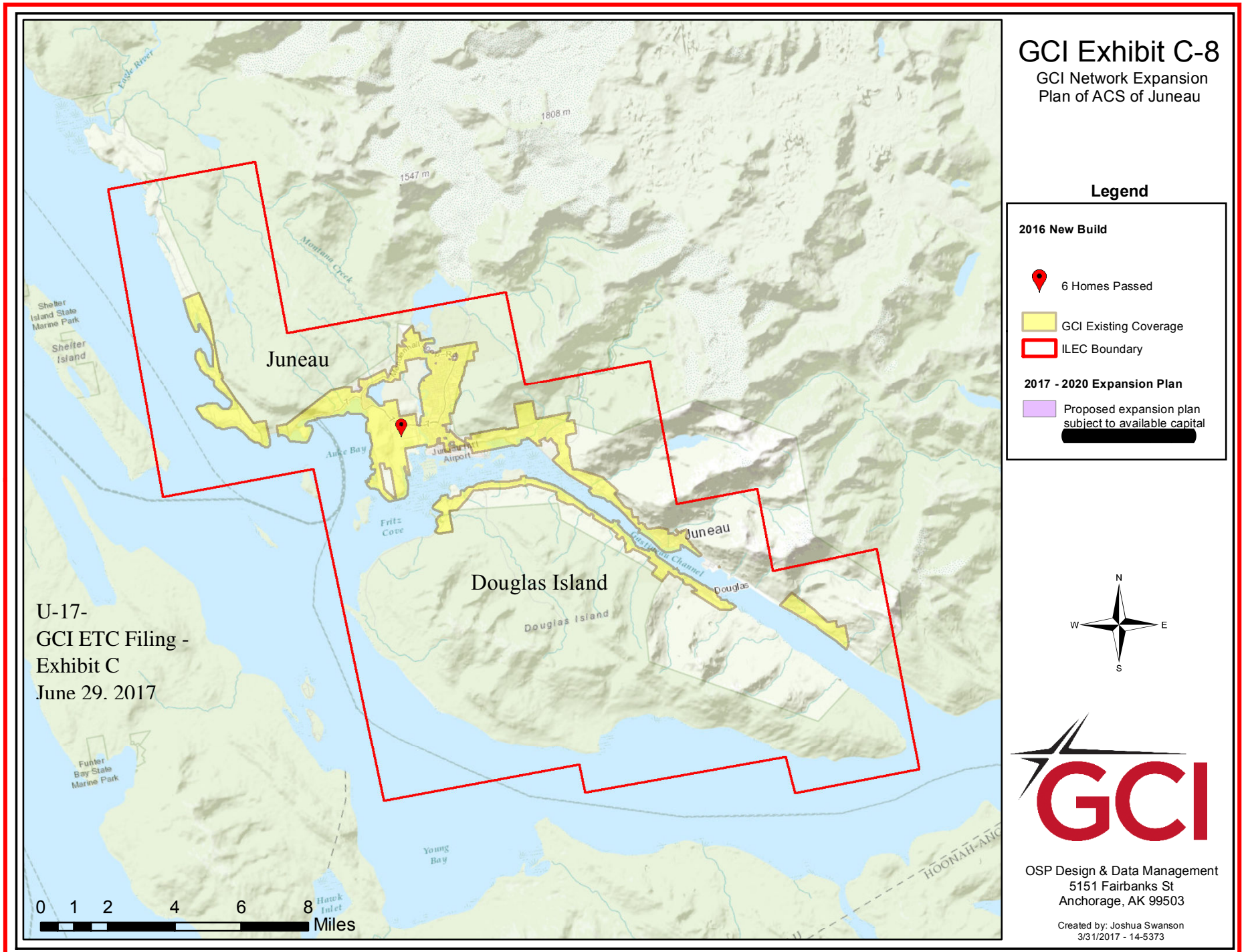
Created by: Joshua Swanson  
3/31/2017 - 14-5373



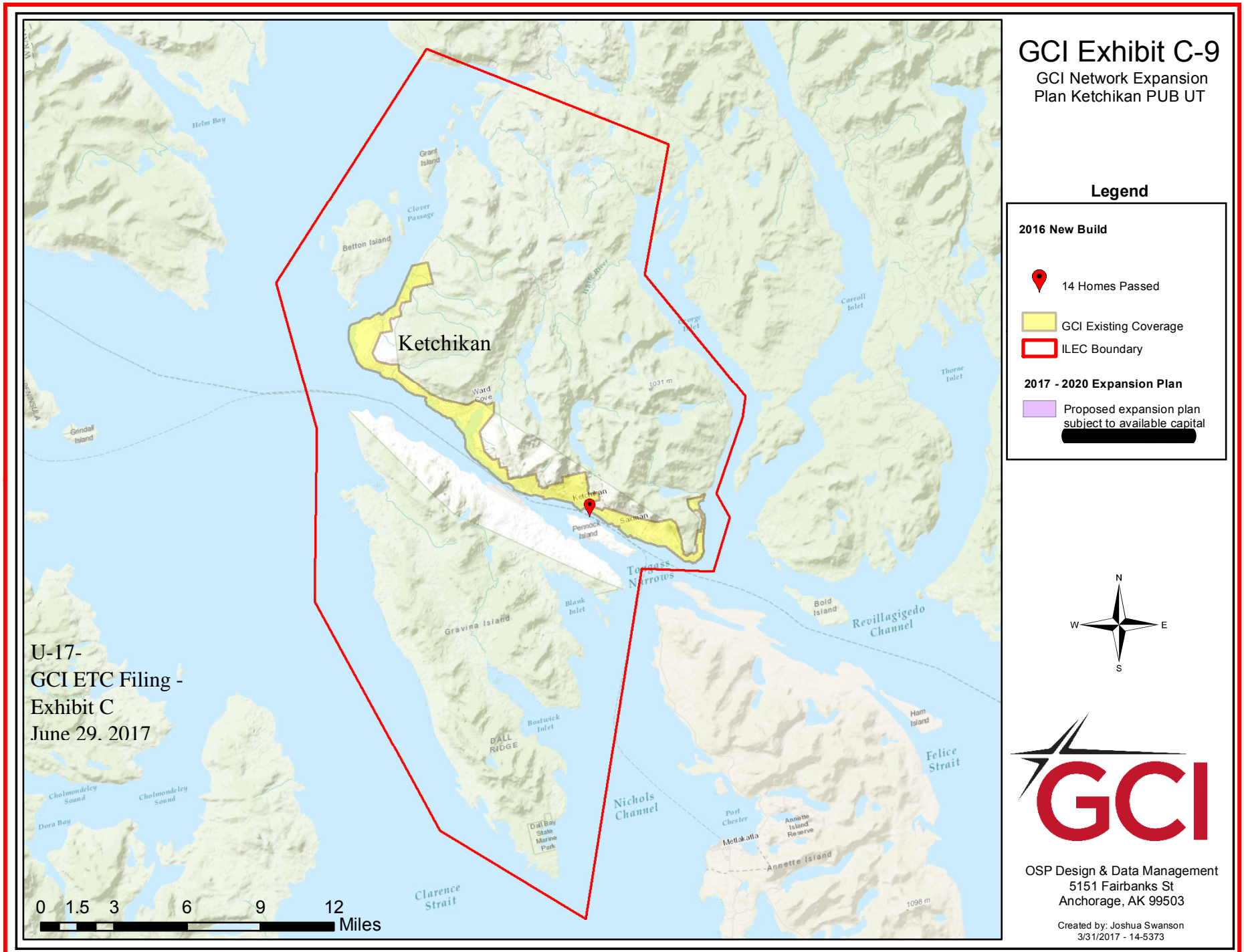
U-17-  
GCI ETC Filing -  
Exhibit C  
June 29, 2017



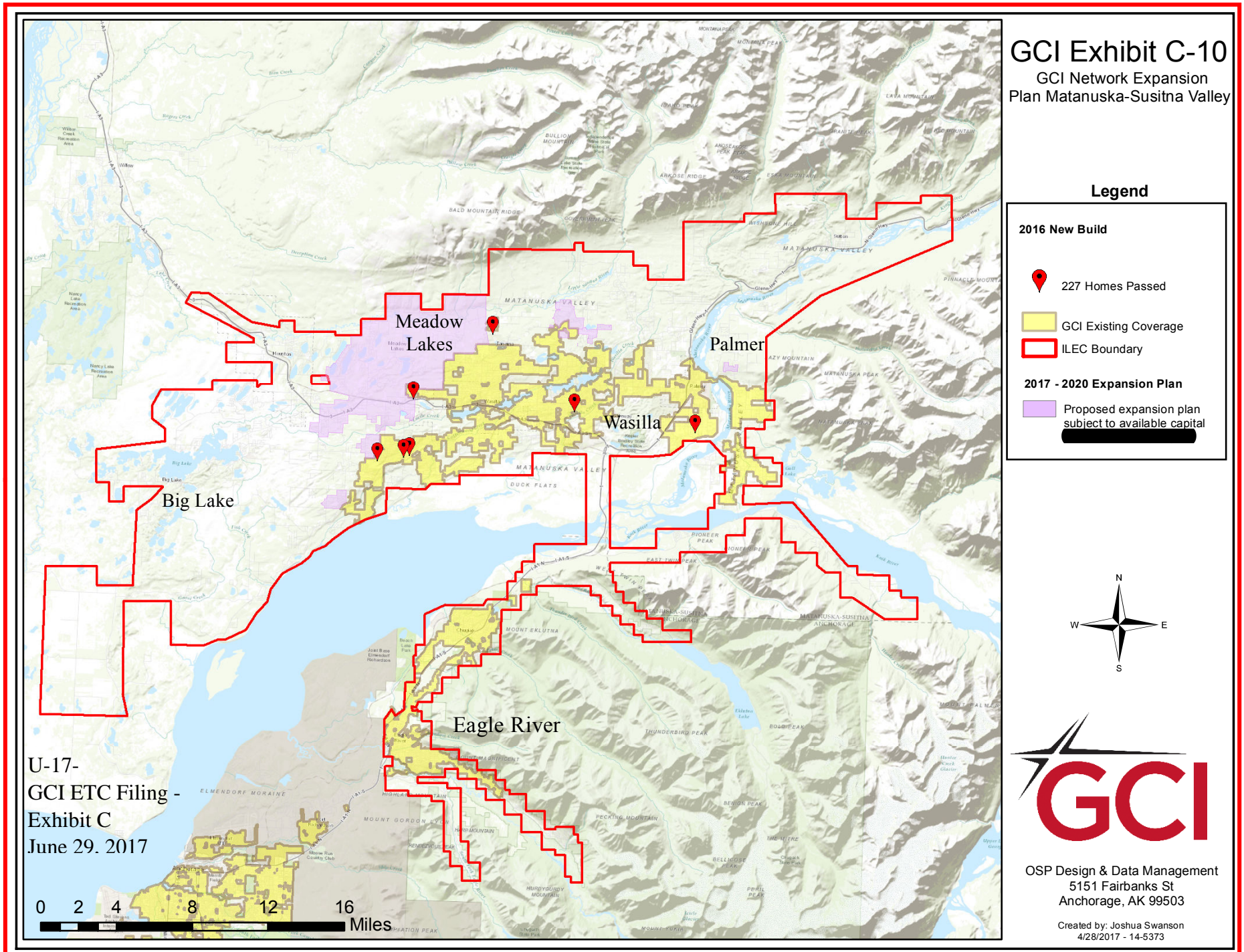














# Exhibit 5

