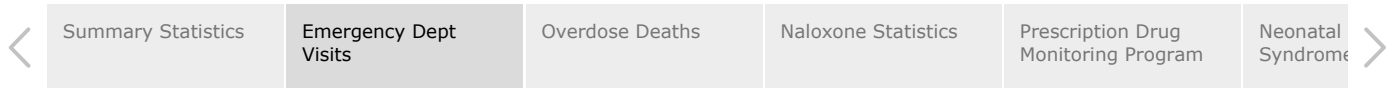


Alaska Opioid Data Dashboard



Number of Opioid-Related Emergency Dept Visits by Public Health Region

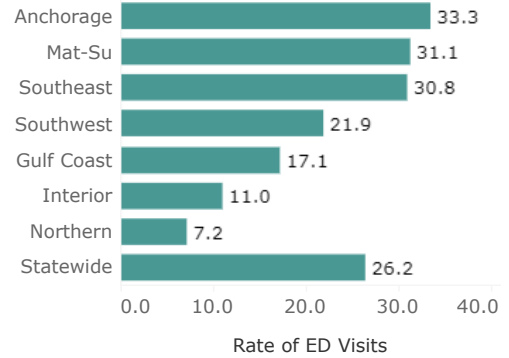
Available ED Visits Data

Rate of ED Visits

Date Range: Sept 2022 - Aug 2023



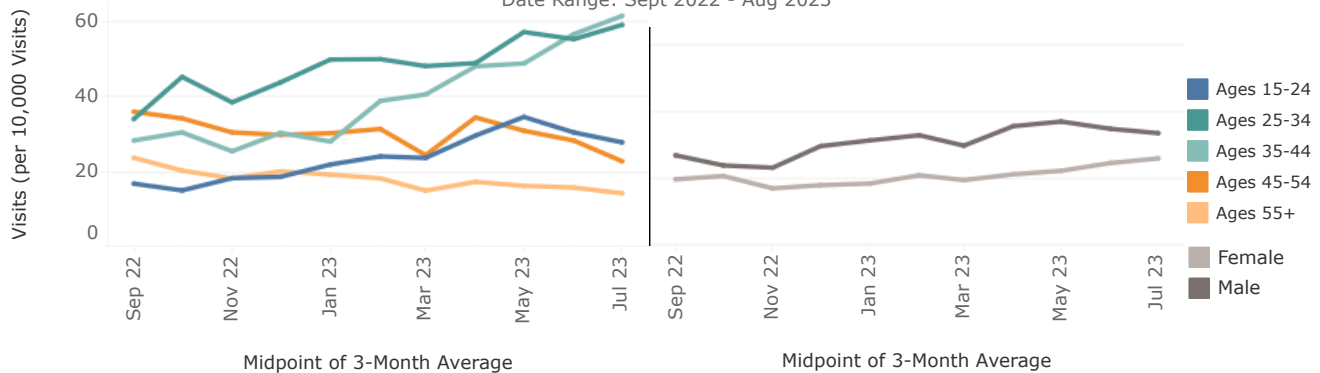
ED Visits Per 10,000 Visits
7.2 33.3



Regional estimates do not add up to statewide total because a patient's address may not be in AK

Opioid-Related Emergency Dept Visits by Age Group and Sex, 3-Month Rolling Averages

Date Range: Sept 2022 - Aug 2023



Emergency department data only (no inpatient visits). Patient records can be misclassified by syndromic surveillance system. Not all AK hospitals are participating in the system at this time. As new hospitals are brought on board, large changes in denominators can result. Data should be used to monitor trends and should not be considered for absolute counts.

[Public Notices](#) [Finance & Management Services](#) [Public Health](#)
[Links for Staff](#) [Health Care Services](#) [Seniors & Disabilities Services](#)
[Behavioral Health](#) [Public Assistance](#) [Boards, Councils & Commissions](#)
[Commissioner's Office](#)
[Contacts](#) [Accessibility](#) [Language Access](#) [Webmaster](#)