

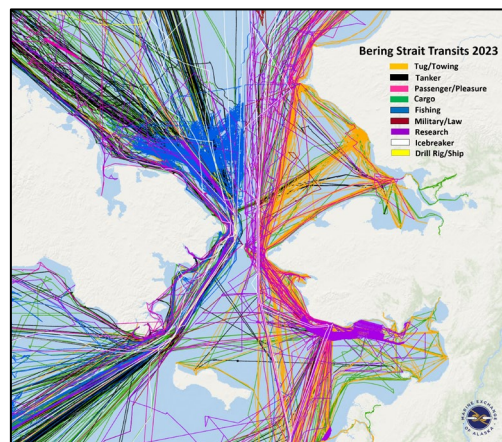


Arctic Watch Mission

Employ technology, communications, and local expertise to enhance safe, secure, and environmentally responsible maritime operations in Alaska's Arctic waters."

Arctic Watch is a maritime safety initiative to enhance safe, efficient, and environmentally sound maritime operations in the Bering Strait region and neighboring Arctic waters. Arctic Watch is an information sharing network applying local knowledge of Alaskans living and working in the Arctic, vessel operators, public and private partners, vessel tracking, and communications technologies being developed by the Marine Exchange of Alaska. A vital component of the Arctic Watch initiative is the establishment of a 24/7 Arctic Watch Center and a dynamic Voluntary Arctic Waterway Users' Guide.

Why is an Arctic Watch Center needed? Vessel transits through the Bering Strait region have doubled in the last decade and projected to continue to increase in the future. The Arctic Watch Center will communicate with Arctic communities, resource trustees and vessels operating in the Arctic information on real time and forecasted weather, ice concentrations, locations of vessels and marine wildlife of value to vessel operators including local indigenous mariners to ensure safe and environmentally sound transits in the Arctic.



What will the Arctic Watch Center do? The Arctic Watch Center will actively conduct sea traffic management to de-conflict maritime activities, disseminate current environmental information and safety information, reduce the risk of a maritime disasters through active monitoring, and facilitate timely responses to marine casualties. The Arctic Watch Center will also share information contained in the Voluntary Arctic Waterways User Guide.

What is a Voluntary Arctic Waterways Users Guide? The Voluntary Arctic Waterways User Guide will be a repository of "need-to-know" information for vessels operating in the Bering Strait region. This guide will be a living document developed in partnership with Arctic communities and other stakeholders.



Arctic Watch Mission

Employ technology, communications, and local expertise to enhance safe, secure, and environmentally responsible maritime operations in Alaska's Arctic waters."

How will the Arctic Watch Center work? The central Arctic Watch Center will be staffed by maritime professionals under the non-profit Marine Exchange of Alaska and engage with regional representatives in Arctic communities. It will be a 24-hour, state of the art operations center that uses a system of cutting-edge sensor technologies to receive and transmit information.

Why should I enroll my vessels in the Arctic Watch program?

- Vessel operators enrolled in this voluntary program will ensure the 24/7 Arctic Watch Monitoring Center is able to transmit to and receive from vessels and communities safety and environmental information. This includes but is not limited to:
 - Marine Protected Areas
 - Ice & Weather Conditions
 - Vessels in Distress (active monitoring, coordination & response)
 - Virtual Aids to Navigation (traffic lanes, Areas To Be Avoided ATBA)
 - Active Subsistence Harvesting Activities
- Vessels enrolled will be offered to have the Marine Exchange Install and support, at no cost to the vessel, a real time weather station that will collect and transmit real-time weather data to the Marine Exchange of Alaska's weather network that will be shared with National Weather Service, communities along the Bering Strait, your home office, and other vessels operating in the region.

How do I enroll my vessel to participate in Arctic Watch? Please visit [Arctic Watch | Supporting Safe Arctic Maritime Operations](#) and click on the enrollment tab, complete, and submit the form.



Scan QR Code to learn
more of our capabilities!