



Chinese Claims

TORONTO SUN, January 17th, 2011

A top Chinese admiral said that because 1/5 of the world's population lives in China, China was entitled to 1/5 of the resources that lie in the Arctic's international waters.

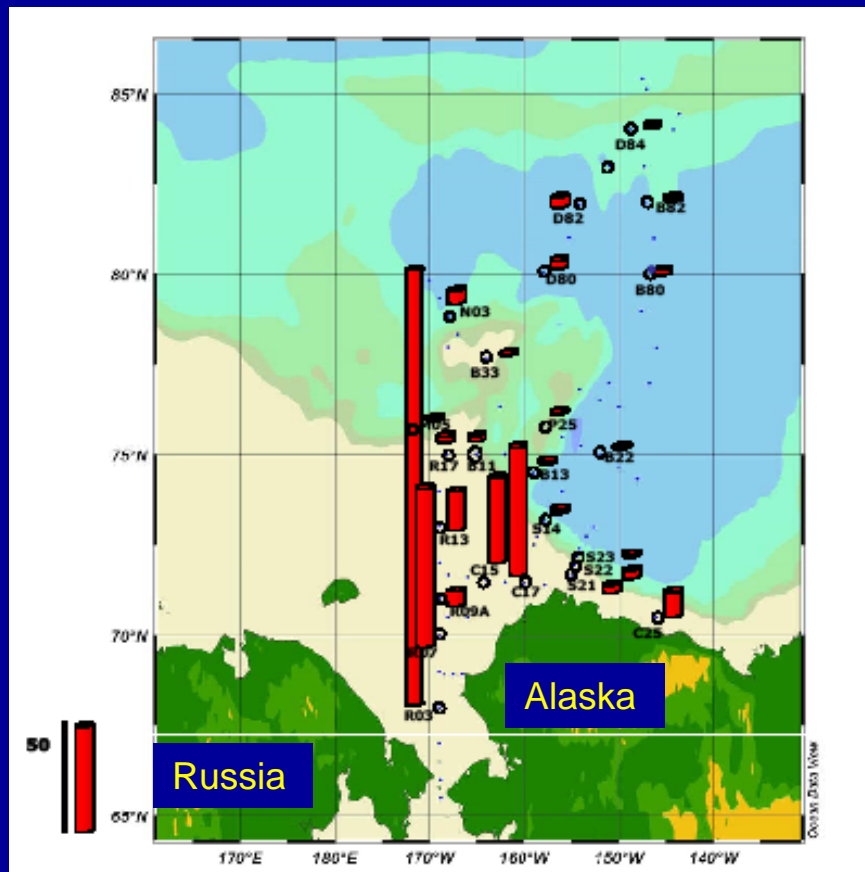
"The Arctic belongs to all the people around the world as no nation has sovereignty over it," Rear Admiral Yin Zhuo said in the spring. "China must play an indispensable role in Arctic exploration as we have one-fifth of the world's population."





CHINESE IN THE ARCTIC

**XUE LONG Arctic Deployment summer 2009
operating in the white space above Alaska**



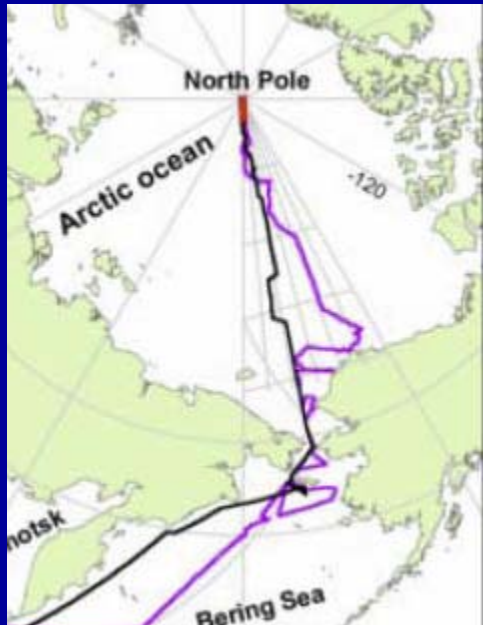
100 stations... 1 mooring system... 1 ice camp on Chukchi Plateau



CHINESE IN THE ARCTIC



**XUE LONG Arctic Deployment summer 2010
operating in the white space above Alaska**

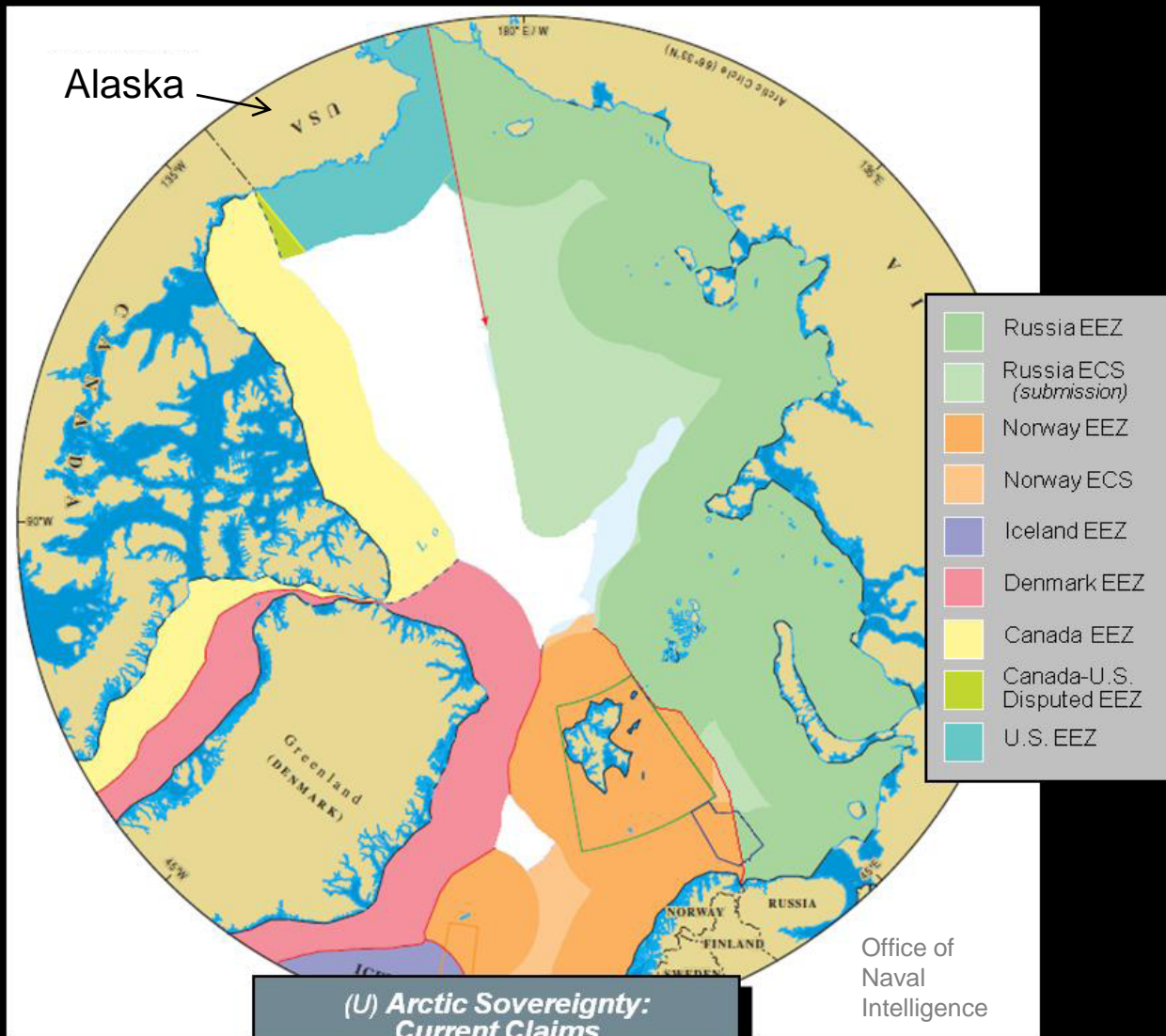


Voyage to North Pole... focus on Chukchi Plateau



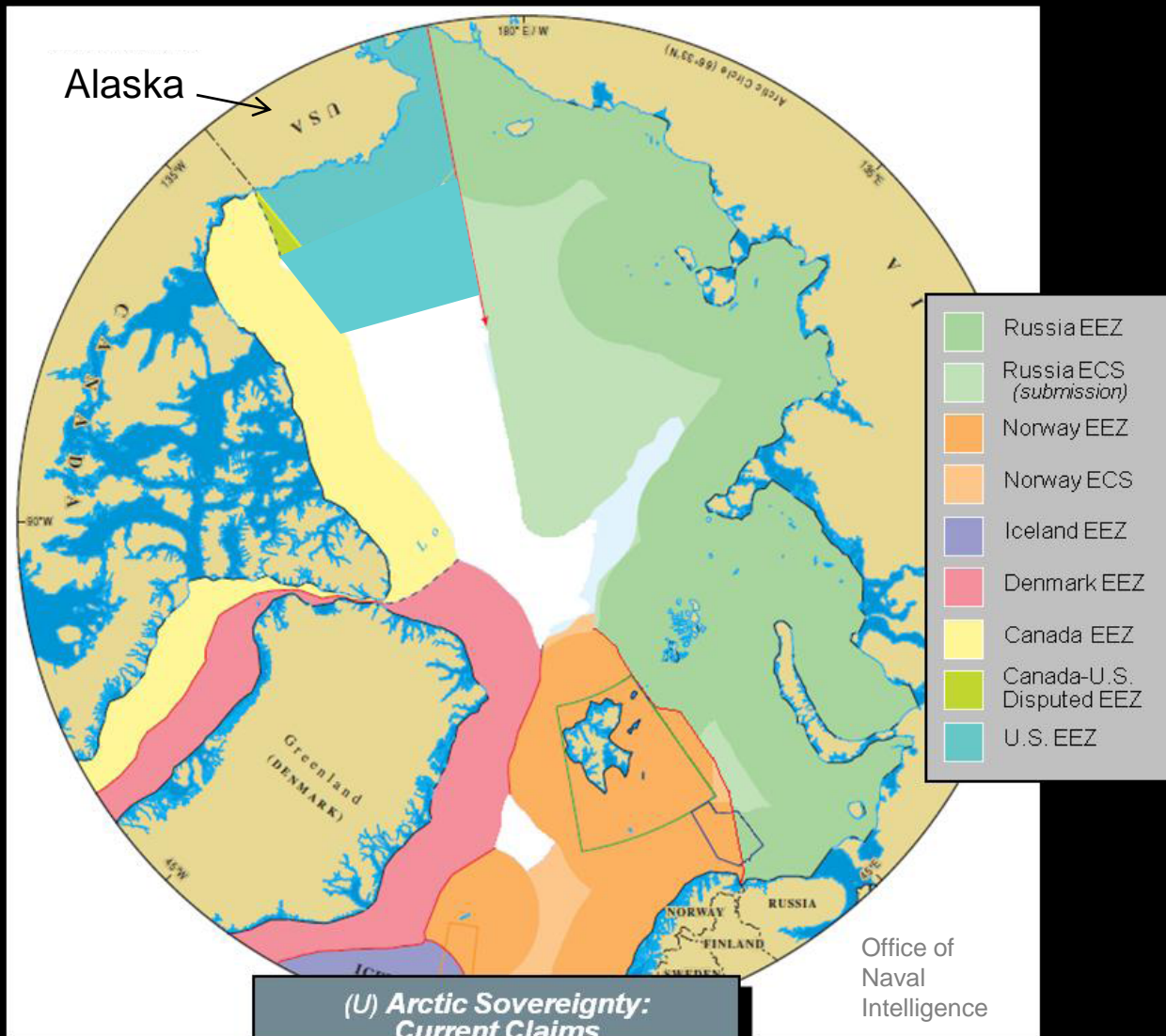
Remaining White Space

Note: The United States can make an Extended Continental Shelf Claim north of the U.S. EEZ when UNCLOS is ratified by the U.S. Senate.





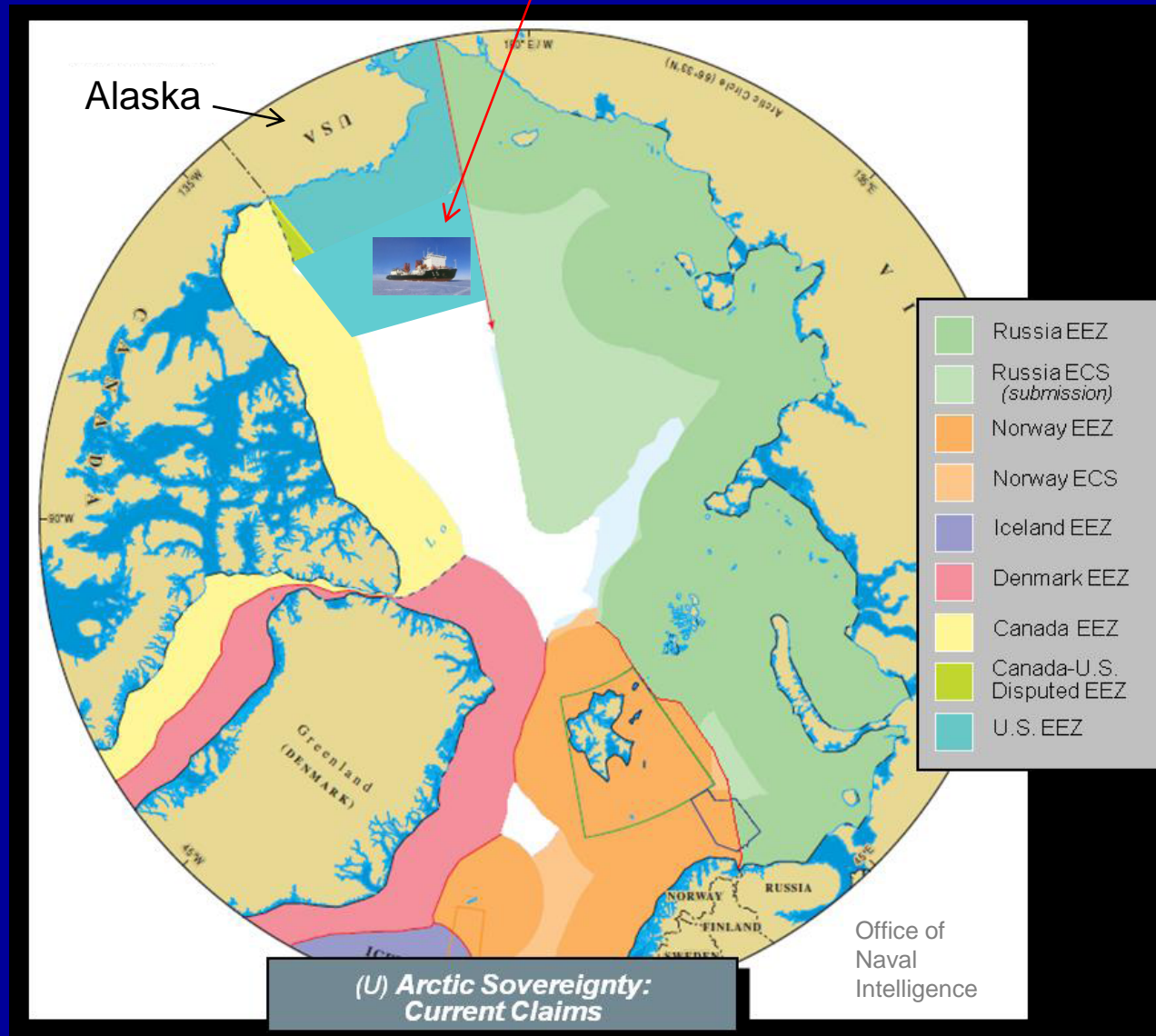
Potential Extended Continental Shelf Claim



Note: The United States can make an Extended Continental Shelf Claim north of the U.S. EEZ when UNCLOS is ratified by the U.S. Senate.



Where Chinese have been operating



Note: The United States can make an Extended Continental Shelf Claim north of the U.S. EEZ when UNCLOS is ratified by the U.S. Senate.

