



THE STATE
of **ALASKA**
GOVERNOR MIKE DUNLEAVY

Department of Transportation and
Public Facilities

Commissioner's Office

P. O. Box 112500
3132 Channel Drive
Juneau, Alaska 99811-2500
Main: 907-465-3911
Fax: 907-465-3124
dot.alaska.gov

March 10, 2025

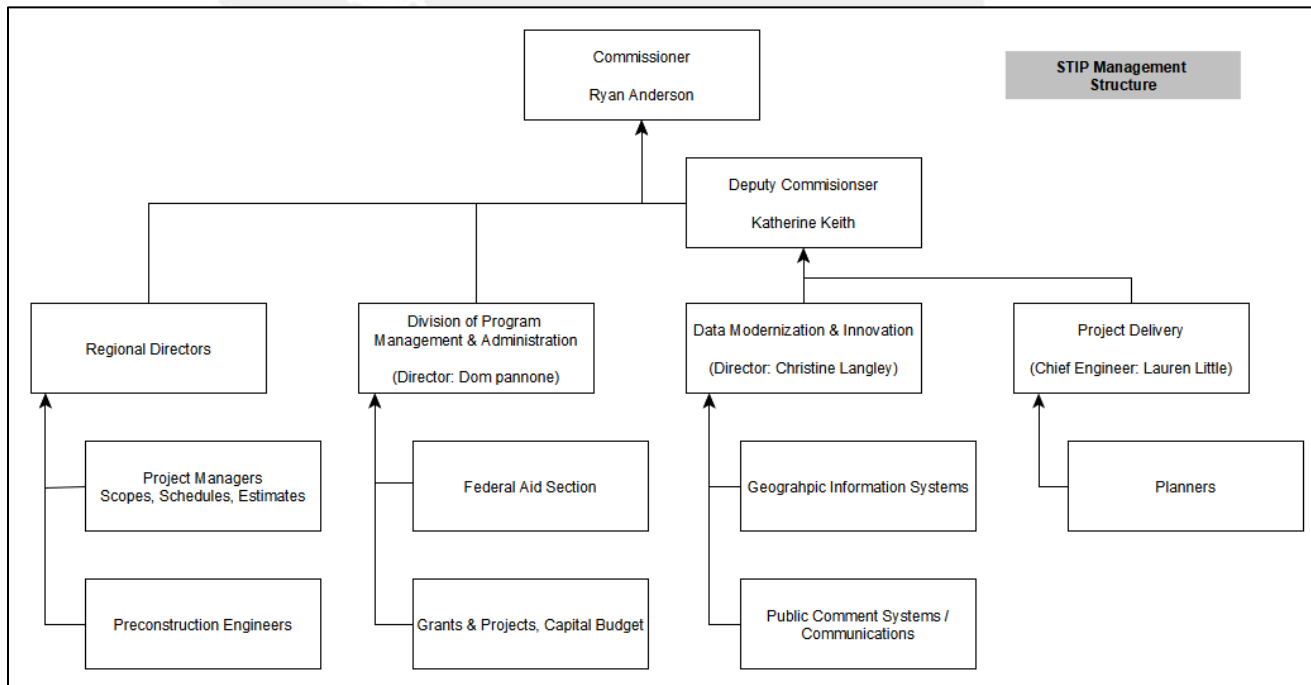
The Honorable Bert Stedman
Co-Chair, Senate Finance Committee
Alaska State Capitol, Room 532
Juneau, AK 99801

Dear Co-Chair Stedman,

In response to questions posed by the Senate Finance Committee on Tuesday, February 25, 2025, the following information is provided:

1. The committee requested the department provide the management structure of the Statewide Transportation Improvement Program (STIP).

Below is an outline of the management structure of the STIP. Additionally, *three enclosures* are provided showing subsequent organizational charts for Program Management & Administration, Data Modernization & Innovation, and Project Delivery, as well as an organizational chart for the former and superseded Division of Program Development and Statewide Planning in existence during the development of the prior STIP.



2. The committee requested a prioritized list of capital projects.

All of the department's capital funding requests are reflective of significant and high priority projects that align with the Governor's priorities. Each project has unique funding and concerns that would require greater discussion before providing a simple prioritized list.

3. The committee inquired about the projected reduction in balance of the Marine Highway System Fund and the relation to Farebox recovery.

In Calendar Year (CY) 2022, all authority to spend from the Marine Highway System Fund was removed from the operating budget by the legislature. Presumably, the intent was to allow the fund to build a balance over time as farebox receipts were deposited and other fund sources expended. However, in subsequent years, authority to spend from the fund had been added back in to both the operating and overhaul/capital budgets, resulting in spending down the fund. This, coupled with operating revenues having not recovered to pre-pandemic levels, has led to a reduced balance in the fund.

Sincerely,

A handwritten signature in blue ink, appearing to read "Ryan Anderson".

Ryan Anderson, P.E.
Commissioner

Enclosures: FY2026 Org. Charts for Program Management & Administration
FY2026 Org. Charts for Data Modernization & Innovation Office
FY2026 Org. Charts for Project Delivery
FY2026 Org. Charts for Regional Teams
FY2019 Org. Charts for Program Development & Statewide Planning

cc: Katherine Keith, Deputy Commissioner, DOT&PF
Dom Pannone, Director, Program Management & Administration, DOT&PF
Andy Mills, Special Assistant to the Commissioner, DOT&PF
Jordan Shilling, Director, Governor's Legislative Office