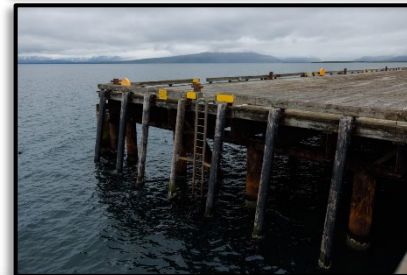
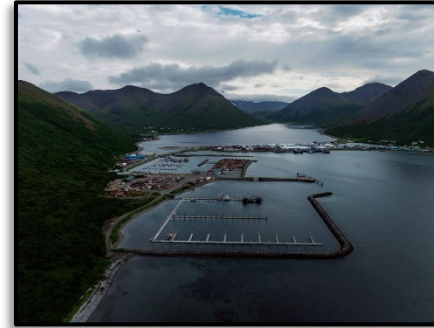
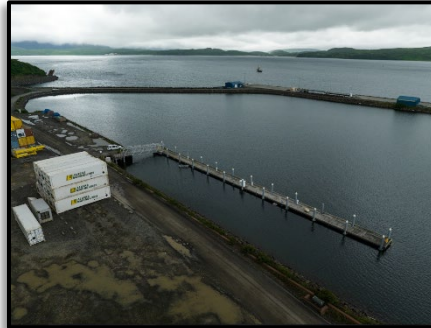


Harbors & Docks

in the Aleutians East Borough



Sand Point

Robert E. Galovin Small Boat Harbor

- Owned by the City of Sand Point.
- Berthing space for 170 vessels.
- Fully rehabilitated in 2014: new floats, gangways, electricity, potable water system & fire suppression system.



New Harbor:

- Borough owns New Harbor.
- Served by Float B.
- Adequate to handle large & small vessels.
- Next phase: complete Float A.
- Borough received \$4.125 State Harbor Facility Grant and \$5.3 PIDP.
- State granted 6-month extension to June 30th to execute grant agreement.



King Cove

North Harbor:

- Provides moorage for up to 75 fishing boats.
- 26,000 square foot timber float system.
- Designed to withstand 130 mph winds.
- Ice-free year round.
- Owned and operated by the City of King Cove.

Robert “Babe” Newman Harbor

- Moorage for 60' to 150' fishing vessels.
- Accommodates about 50 boats.
- Owned by the City.



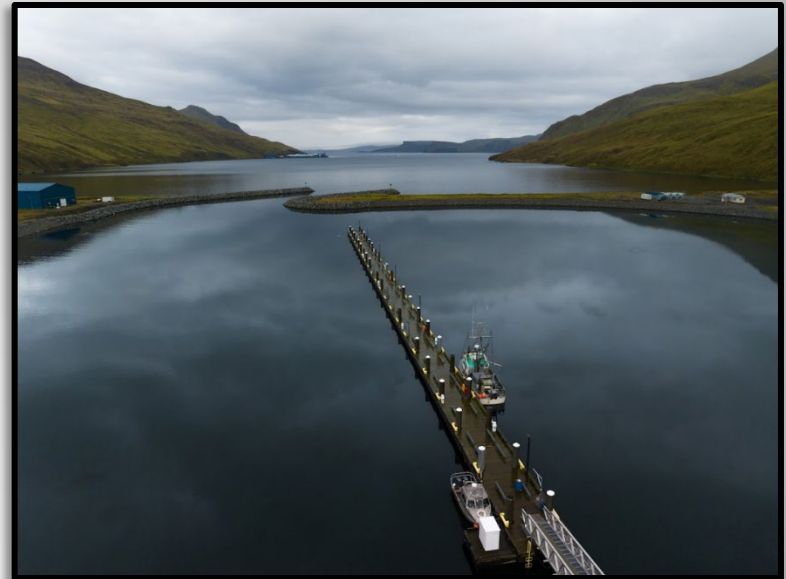
False Pass Harbor

- Completed boat harbor owned by Borough.
- City maintains & operates.
- Two floats.
- Accommodates 40+ boats from 32' to 120'.
- Borough funded construction of 2 floats.



Akutan Harbor

- Boat Harbor is near completion.
- Will be able to accommodate 58 vessels for up to 165'.
- Served by Float A.
- Needs funding to design and build a second float.
- Once complete, will accommodate 58 vessels up to 165' in length & 2 vessels up to 125' in length.
- Project depends on State's Harbor Grant Program to finalize.



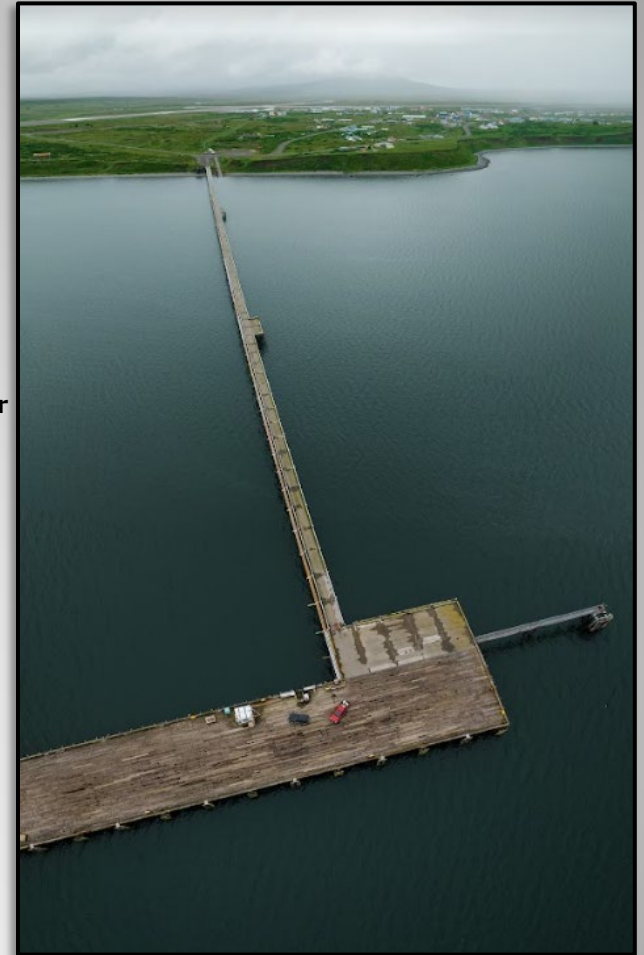
Nelson Lagoon Dock

- Borough owns dock: 35' X 150'.
- In 2021, \$1.6 million in repairs conducted.
- Installed piles and anodes, overhauls to existing steel fender system.
- Completion of dock's topside.
- Dock has 2-ton crane mounted on north side, forklifts and loader.
- Boat ramp: 21' X 157' – used for small boats and skiffs.
- Travel lift accommodates boats 50' in length and 14' in width, up to 40 tons.
- One set of finger piers on each side of dock; Can operate in most weather & currents.



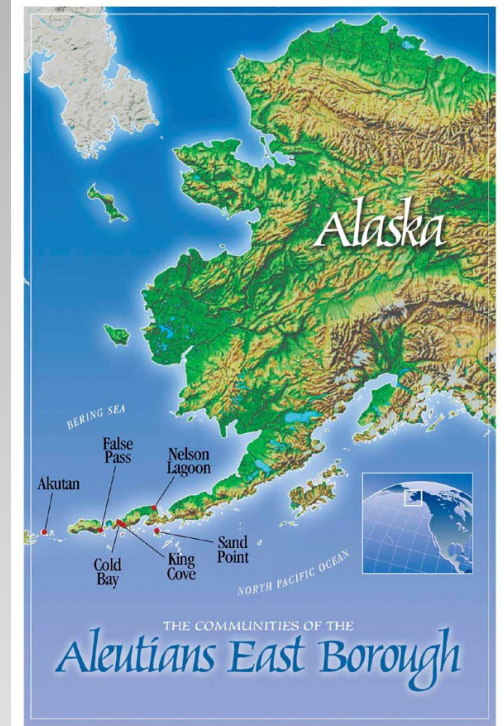
Cold Bay Dock

- Cold Bay Dock is 45 years old.
- Serves as major marine hub in Aleutians for conventional and containerized general cargo, petroleum products; landing for passengers via fishing boats and Tustumena Ferry.
- Public dock: 60' wide by 360' long.
- Borough owns dock.
- Has Dock Management Agreement with City of Cold Bay to maintain and operate it.
- Projected to have 10-year life span.
- Borough conducted a Feasibility Study.
- Determined major structural elements in poor condition; show ongoing deterioration.
- Eventually, function & capability will be reduced and no longer be serviceable.
- Borough currently working with AML and State on PIDP grant application for design, permitting & construction of new dock.
- This is a critical need for community & the region.



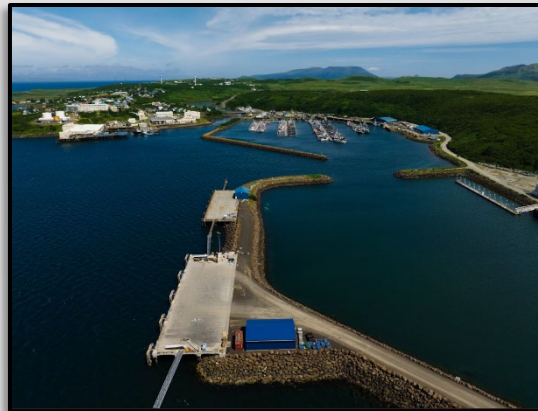
Challenges:

- **Communities are remote: accessible only by plane or boat.**
- **Harsh & unpredictable weather: gale force winds, dense fog.**
- **Travel to our communities is expensive.**
- **Cancellations cause added costs for contractors.**
- **Other hurdles: inflation, rising interest rates, supply chain issues.**
- **Despite challenges, proud of accomplishments.**
- **Will overcome obstacles to provide necessary infrastructure.**



Importance of Infrastructure

- **Commercial fisheries are the lifeblood of our local communities.**
- **Cannot grow and attract businesses without operational boat harbors and docks**
- **This infrastructure is needed to create healthy communities.**
- **Communities of Aleutians East Borough rely heavily on State for expertise and to provide matching grant funds for all our projects.**
- **Appreciate State's help.**
- **Hope to continue improving infrastructure.**
- **Important for local economies as well as that of the State.**

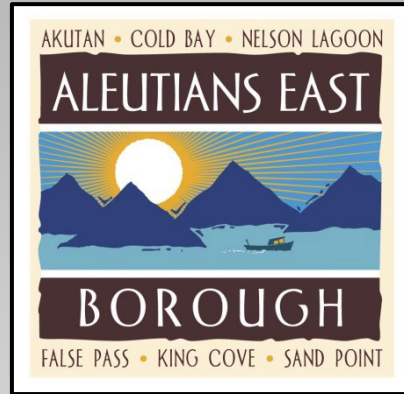


Importance of State & Federal Funding

The Borough has applied on many occasions for State of Alaska Harbor Facility Grant funds. Last year, the Borough was pleased to receive \$4.125 million in State Harbor Municipal Grant funding for Sand Point's New Harbor. Those monies were used as matching funds for the \$5.3 million in Port Infrastructure Development Program financing the Borough received for this project. The State of Alaska Harbor Facility grants have been an integral funding source for Borough harbor projects. Those funds will continue to be essential for future projects.

Federal funds are also crucial. Numerous grant opportunities are currently available.





Harbors & Docks

in the Aleutians East Borough

Comments or Questions?