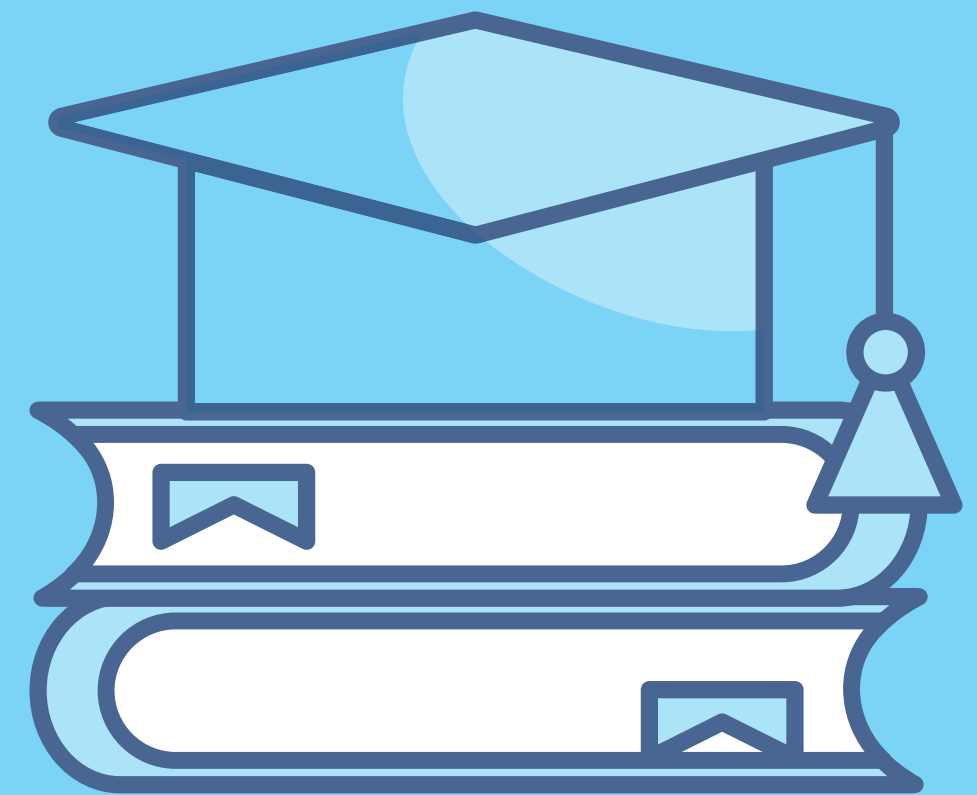


SENATE BILL 46

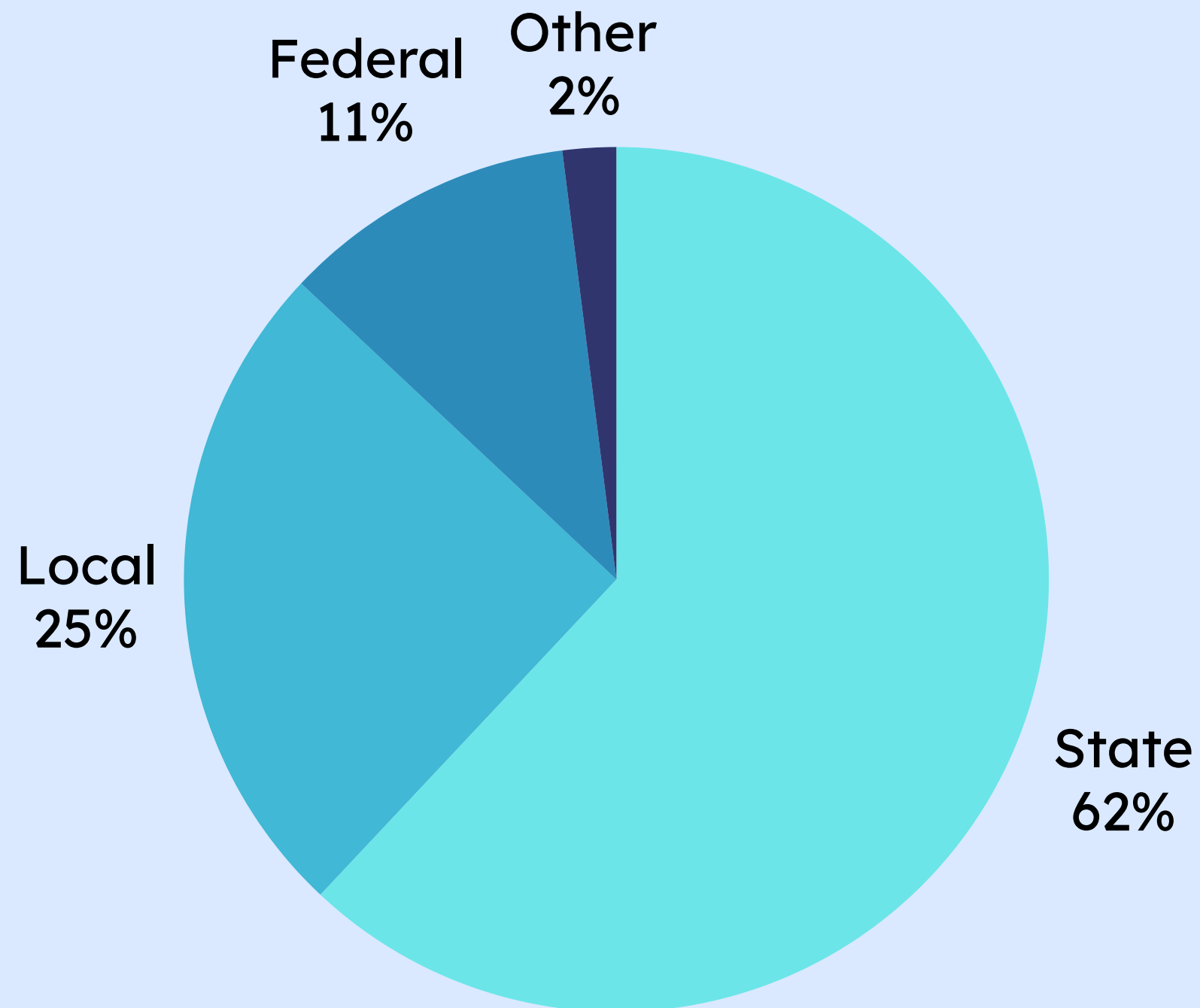
SENATOR MATT CLAMAN, DISTRICT H



FY25 EDUCATION FUNDING

AS 14.17.410(b):

Public school funding consists of state aid, a required local contribution, and eligible federal impact aid



Determining Basic Need and State Aid (Statewide and District)

CURRENT STRUCTURE

District AADM x BSA (\$5,960) = **District Basic Need**

District Basic Need - District Local Contribution - District Federal Impact Aid = **District State Aid**

The sum of District State Aid for all 53 districts = **Total State Aid**

State Aid is then appropriated by the legislature.

AADM: Adjusted Average Daily Membership
BSA: Base Student Allocation

SENATE BILL 46

Total Statewide Basic Need
The legislature uses Prior Year Education Funding adjusted for inflation (x CPI) as a starting point

Multiply Total Statewide Basic Need by the district AADM percentage of total AADM to determine **District Basic Need**

District Basic Need - District Local Contribution - District Federal Impact Aid = **District State Aid**

Current Structure - District State Aid

FY25

A	B	C	D	E	F	G
District	FY25 Projected AADM	FY25 Basic Need AADM x \$5,960 BSA	FY25 District Required Local Contribution	FY25 District Deductible Federal Impact Aid	FY25 One- Time Funding AADM x \$680	FY25 District State Aid Basic Need - Local - Fed Impact Aid + one-time funding
Anchorage	72,222	\$430,443,120	\$121,150,925	\$6,608,921	\$49,110,960	\$351,238,531
Lower Yukon	7,597	\$45,278,954	\$0	\$6,874,824	\$5,166,055	\$43,570,186
Mat-Su	35,473	\$211,420,510	\$49,661,045	\$0	\$24,121,803	\$185,881,269
Southeast Island	828	\$4,932,198	\$0	\$0	\$562,734	\$5,494,932

Source: Alaska Department of Education & Early Development, "FY25 Foundation PROJ ADA Data,"
November 30, 2023. Retrieved from:
https://education.alaska.gov/schoolfinance/docs/4-Pager_FY25_Foundation_PROJ_11-30-2023_ADA.xlsm

AADM: Adjusted Average Daily Membership
BSA: Base Student Allocation

Senate Bill 46 - Statewide Basic Need

FY26

A	B	C	D	E	F
District	FY25 Total State Aid Includes Outside-the-Formula funding	FY25 Statewide Required Local Contribution	FY25 Statewide Deductible Federal Impact Aid	FY25 Statewide Basic Need SUM: Columns B, C, D	FY26 Statewide Basic Need FY25 Statewide Basic Need adjusted for CY24 CPI
All Districts	\$1,260,475,300	\$314,042,821	\$89,123,857	\$1,663,641,978	\$1,700,930,849

Source: Alaska Department of Education & Early Development, "FY25 Foundation PROJ ADA Data," November 30, 2023. Retrieved from: https://education.alaska.gov/schoolfinance/docs/4-Pager_FY25_Foundation_PROJ_11-30-2023_ADA.xlsm

Senate Bill 46 - District AADM

FY26

A	B	C	D
District	FY26 Projected Statewide AADM	FY26 Projected District AADM	FY26 District's Percentage of Statewide AADM
Anchorage	253,201	70,517	27.9%
Lower Yukon	253,201	7,539	3.0%
Mat-Su	253,201	35,424	14.0%
Southeast Island	253,201	775	0.3%

AADM: Adjusted Average Daily Membership

Source: Alaska Department of Education & Early Development, "FY26 Foundation PROJ ADA Data," November 26, 2024. Retrieved from:
https://education.alaska.gov/SchoolFinance/docs/4-Pager_FY26_Foundation_PROJ_11-26-2024_ADA.xlsm

Senate Bill 46 - District State Aid

FY26

Total FY26 Statewide Basic Need adjusted for inflation:					\$1,700,930,849
A	C	D	E	F	G
District	District Percentage of Statewide AADM	FY26 District Basic Need AADM Percentage x Statewide Basic Need	FY26 District Required Local Contribution	FY26 District Deductible Federal Impact Aid	FY26 District State Aid Basic Need - Local - Fed Impact Aid
Anchorage	27.9%	\$473,712,975	\$127,700,087	\$6,608,921	\$339,403,967
Lower Yukon	3.0%	\$50,641,684	\$0	\$6,874,824	\$43,766,860
Mat-Su	14.0%	\$237,968,503	\$49,661,045	\$0	\$188,307,458
Southeast Island	0.3%	\$5,204,071	\$0	\$0	\$5,204,071

AADM: Adjusted Average Daily Membership

Comparison - District State Aid

A	B	C	D
District	FY25 District State Aid Current Structure <i>AADM x \$5,960</i>	FY25 District State Aid Current Structure <i>With one-time funding: AADM x \$680</i>	FY26 District State Aid Senate Bill 46
Anchorage	\$302,127,571	\$351,238,531	\$339,403,967
Lower Yukon	\$38,404,130	\$43,570,186	\$43,766,860
Mat-Su	\$161,759,465	\$185,881,269	\$188,307,458
Southeast Island	\$4,932,198	\$5,494,932	\$5,204,071