



Senate Health & Social Services Committee

March 4, 2025



New CEO Joins the Trust

Mary Wilson, MD
joined the Trust on
January 22, 2025





Trustees

- **Brent Fisher**, *Chair*
- **Agnes Moran**, *Vice Chair, Program & Planning Committee Chair*
- **Rhonda Boyles**, *Secretary*
- **Corri Feige**, *Resource Management Committee Chair*
- **Kevin Fimon**, *Audit & Risk Committee Chair*
- **John Morris**, *Finance Committee Chair*
- **Anita Halterman**, *Trustee*

Trust Beneficiaries

Trust beneficiaries include Alaskans who experience:

- Mental illnesses
- Intellectual and/or developmental disabilities
- Alzheimer's disease and related dementia
- Traumatic brain injuries
- Substance use disorders



Our Role

- Oversee management of Trust assets
- Spend Trust income
- Recommend to Governor and Legislature how the State of Alaska should spend general fund resources
- Ensuring the State has a Comprehensive Integrated Mental Health Program Plan
- Serve as an advocate for beneficiaries and a Change Agent

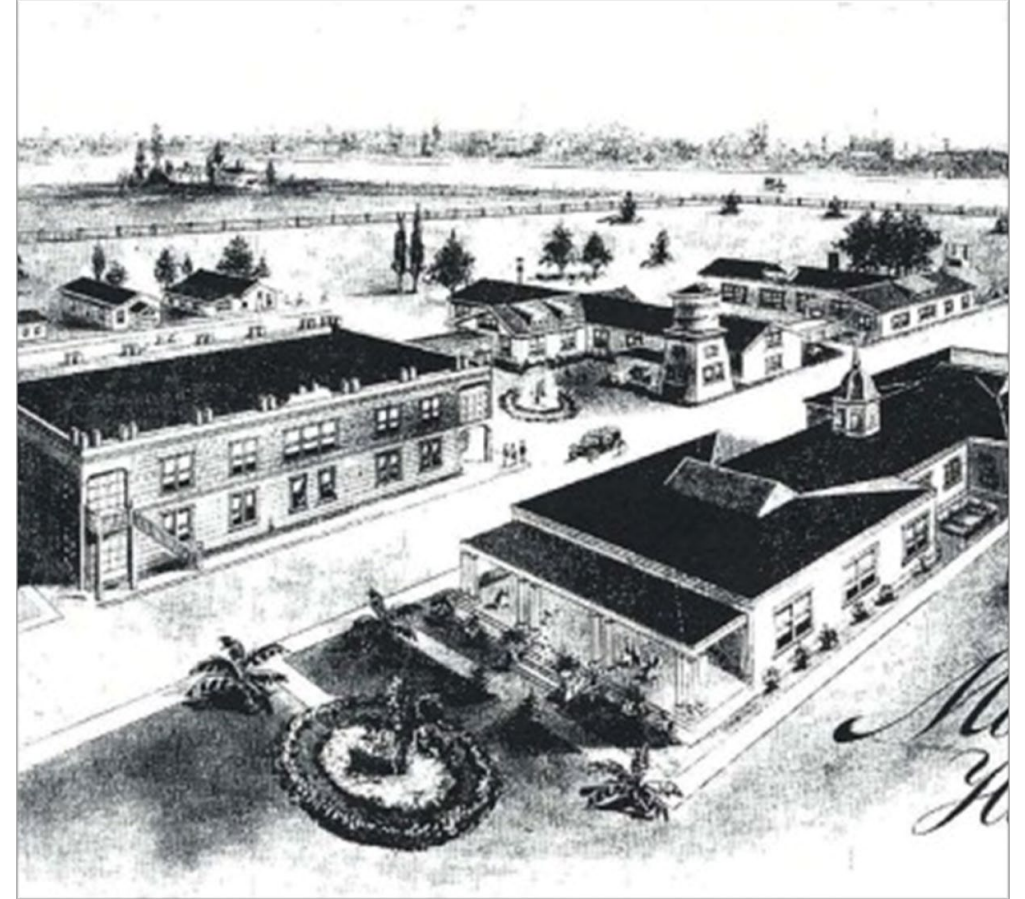


About the Trust



Trust

Alaska Mental Health
Trust Authority



Morningside Hospital, Oregon



FY26: Trust Focus Areas

The Trust develops its budget and engages in grantmaking, advocacy, and system improvement efforts around the following areas:

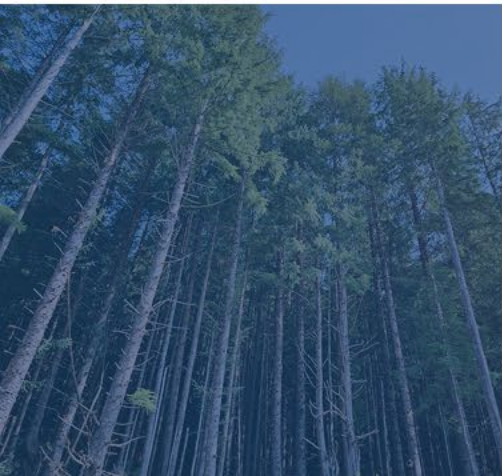
Established Focus Areas

- Disability Justice
- Mental Health & Addiction Intervention
 - Includes Behavioral Health Crisis Response*
- Beneficiary Employment & Engagement
- Housing and Home & Community Based Services



Additional Priorities

- Workforce Development
- Early Childhood Intervention & Prevention



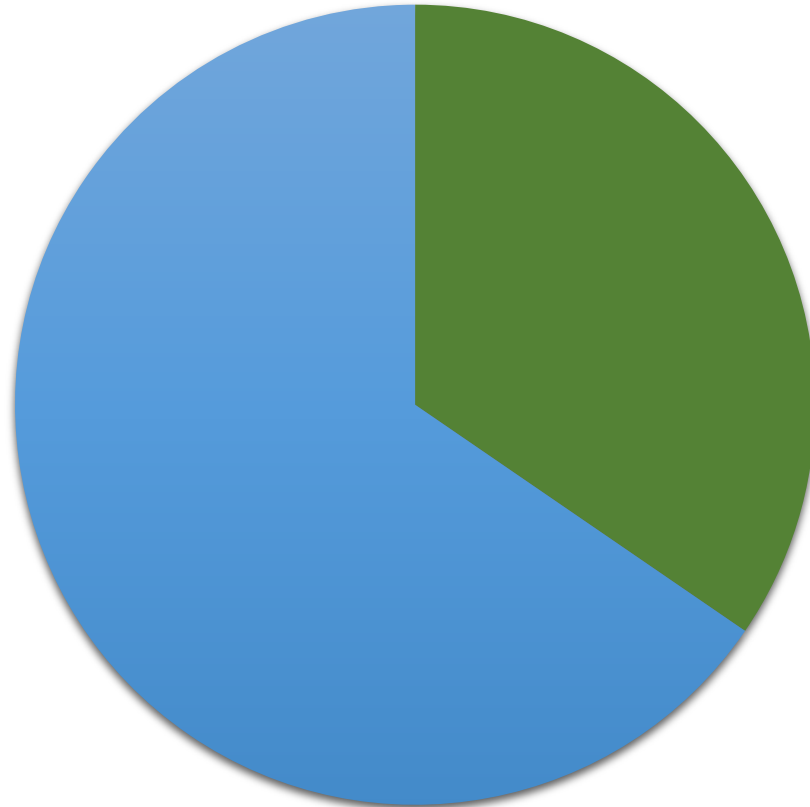
Trust Grantmaking, FY 26

Authority Grants

\$19,119.3

Designated grants to community providers, nonprofits, local governments and Tribal organizations

Includes \$1.9M in mini grants



MHTAAR Grants

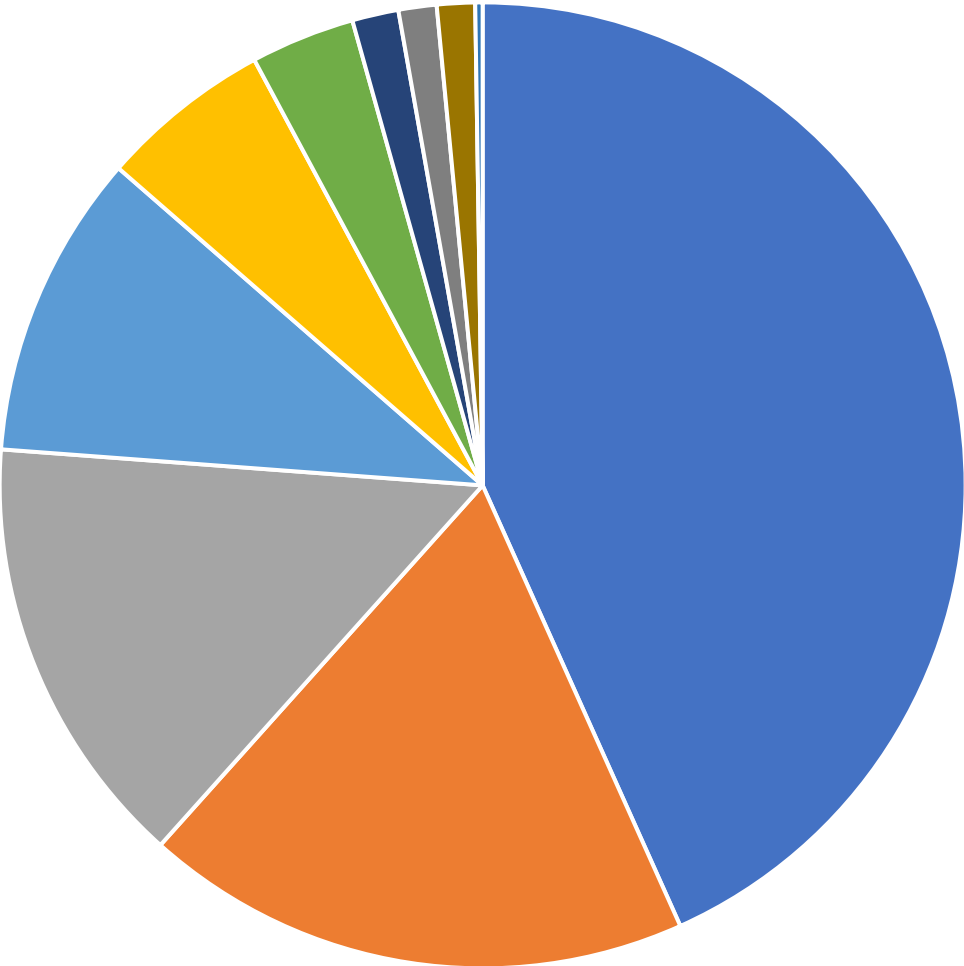
\$10,196.8

Designated grants to state agencies, requires receipt authority



MHTAAR Grants, FY26

Total: \$10,196.8
(53 MHTAAR Projects)



- Department of Health (\$4,413.9)
- UAA (\$1,870.0)
- AHFC (\$1,485.0)
- Department of Corrections (\$1,041.7)
- Department of Family and Community Services (\$587.0)
- Department of Administration (\$355.9)
- Alaska Court System (\$158.3)
- Department of Public Safety (\$130.0)
- Department of Education and Early Development (\$130.0)
- Department of Labor and Workforce Development (\$25.0)



Kotzebue

Fairbanks

Mat-Su

Glennallen

Anchorage

Kenai

Juneau

Ketchikan

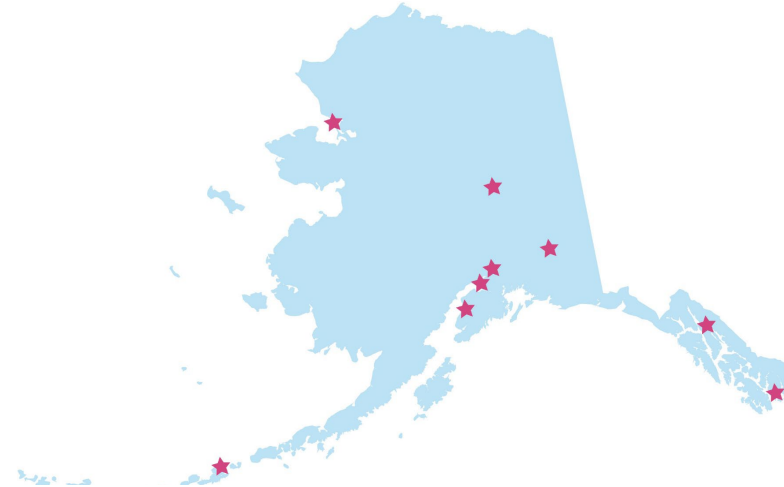
Partners statewide have already begun implementing the Crisis Now framework in order to improve access to individuals experiencing a behavioral health crisis across the state.

Crisis Now Community Implementation 2024/25

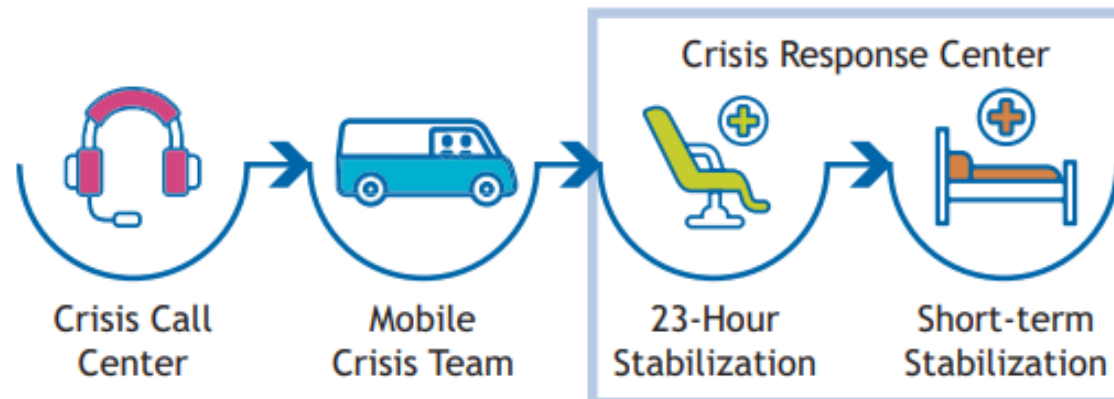
Since the initiative's launch in 2019, the Trust has invested roughly \$20M in planning and grantmaking around psychiatric emergency response.

Crisis service planning and implementation underway in:

Anchorage
Mat-Su
Fairbanks
Juneau
Ketchikan
Kenai Peninsula
Kotzebue
Copper Basin
Unalaska



Someone to Talk to, Someone to Respond and a Place to Go



Thank You

Questions?

Trust

Alaska Mental Health
Trust Authority

alaskamentalhealthtrust.org

