

# Alaska Mining Industry Update

February 24, 2025

Deantha Skibinski  
Executive Director  
Alaska Miners Association

Karen Matthias  
Executive Director  
Alaska Metal Mines



# Overview



Mining in America ➡ Mining in Alaska

Operational excellence:



- Large-scale mining operation
- Mining project in development
- Placer mining operation



The benefits: healthy economy, healthy communities, healthy Alaskans





The United States has the **second longest lead times in the world** for developing a new mine



Source: S&P Global report 2024

MINERALS  
MAKE  
LIFE



**The Importance of Domestic Mining for U.S. National Security**



PRESIDENTIAL ACTIONS

# UNLEASHING ALASKA'S EXTRAORDINARY RESOURCE POTENTIAL

EXECUTIVE ORDER

January 20, 2025

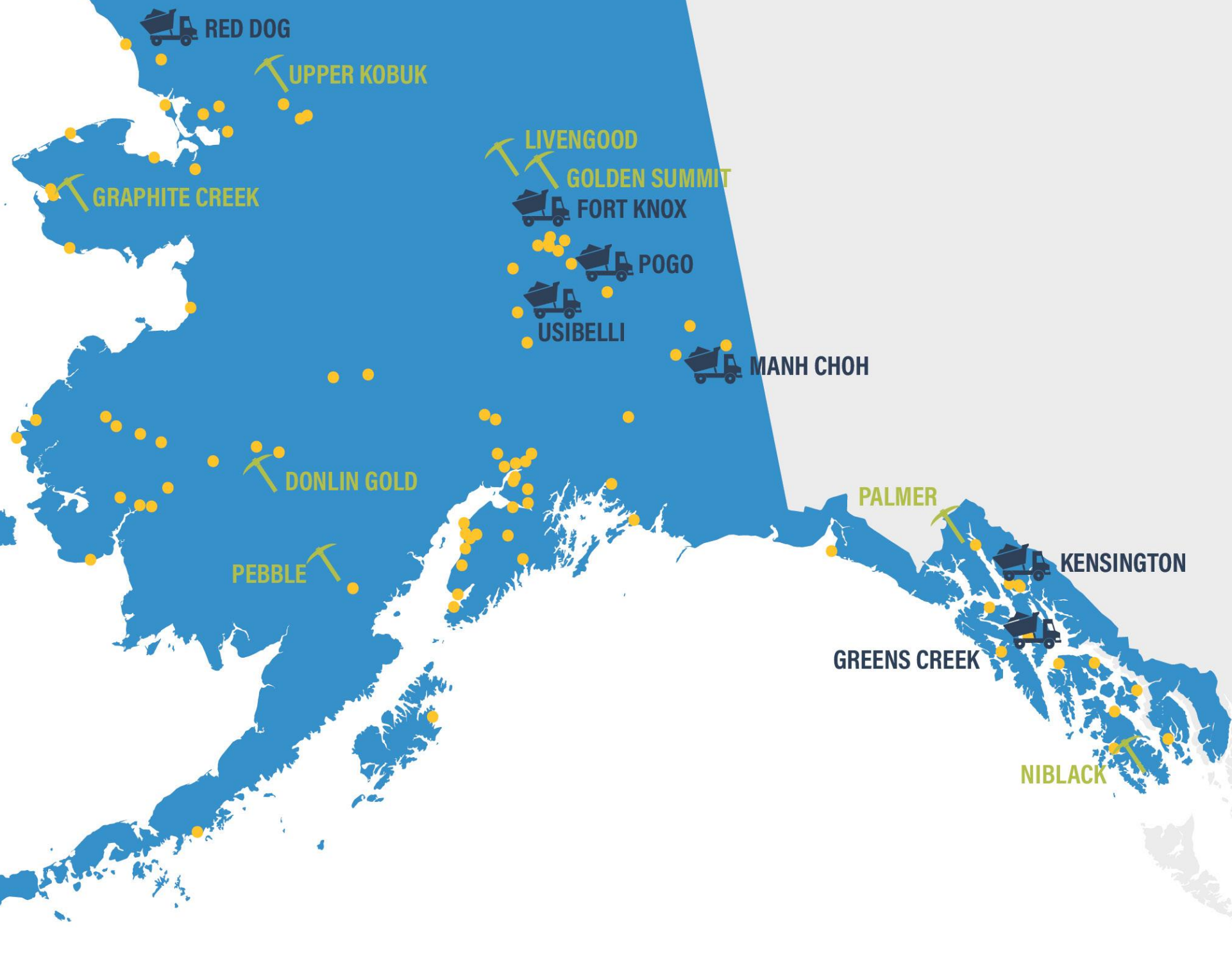




  
ADVANCED  
EXPLORATION PROJECTS

  
PRODUCING MINES

  
COMMUNITY WITH MINING  
INDUSTRY EMPLOYEES





# OPERATOR **RED DOG MINE**





# Red Dog Operations

World's Largest Zinc Producer



## Red Dog Operations

- NANA is the landowner
- Teck is the operator

## World Class Operation

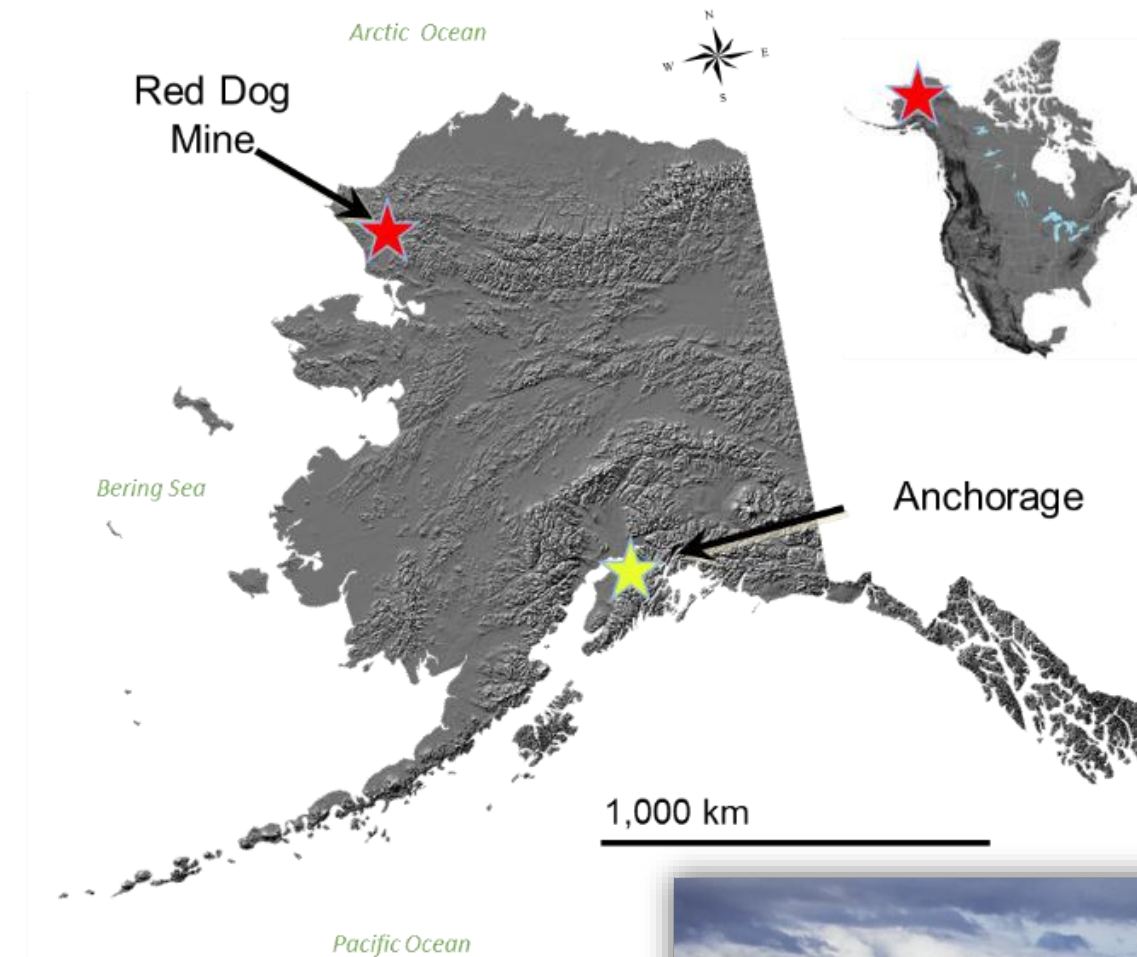
- World's Largest Zinc Producer

## Red Dog Deposits

- Main (mined out)
- Aqqaluk (2010 start)
- Qanaiyaq (2017 start)

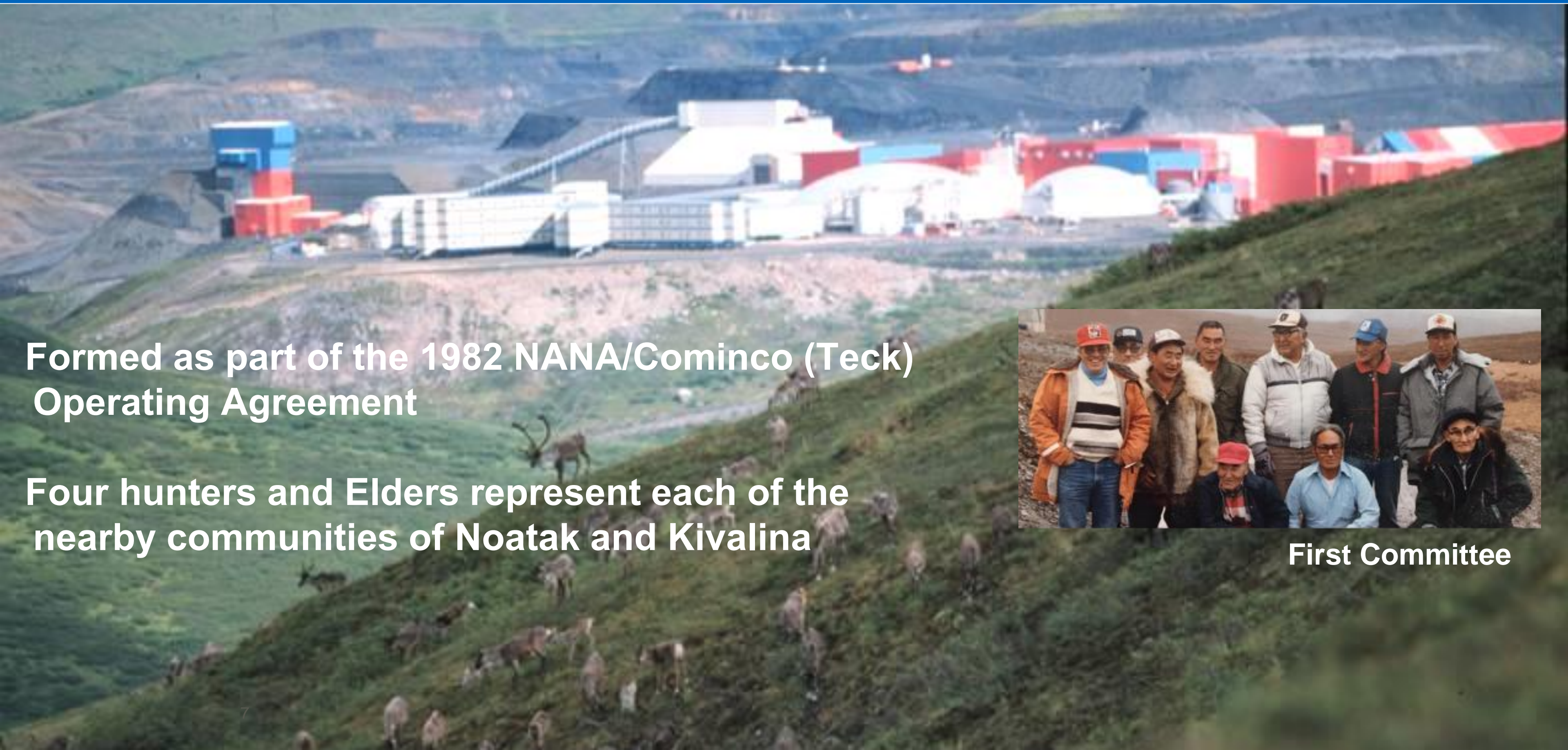
## Current Life of Mine 2031

- Aktigiruaq deposit *could* extend mine life (State of Alaska resource)





# Red Dog Subsistence Committee Protecting Subsistence and the Environment



**Formed as part of the 1982 NANA/Cominco (Teck)  
Operating Agreement**

**Four hunters and Elders represent each of the  
nearby communities of Noatak and Kivalina**



**First Committee**



# Protecting Subsistence and the Environment Through Co-design and collaboration



**Fuel Barge**



**Freight Barge**



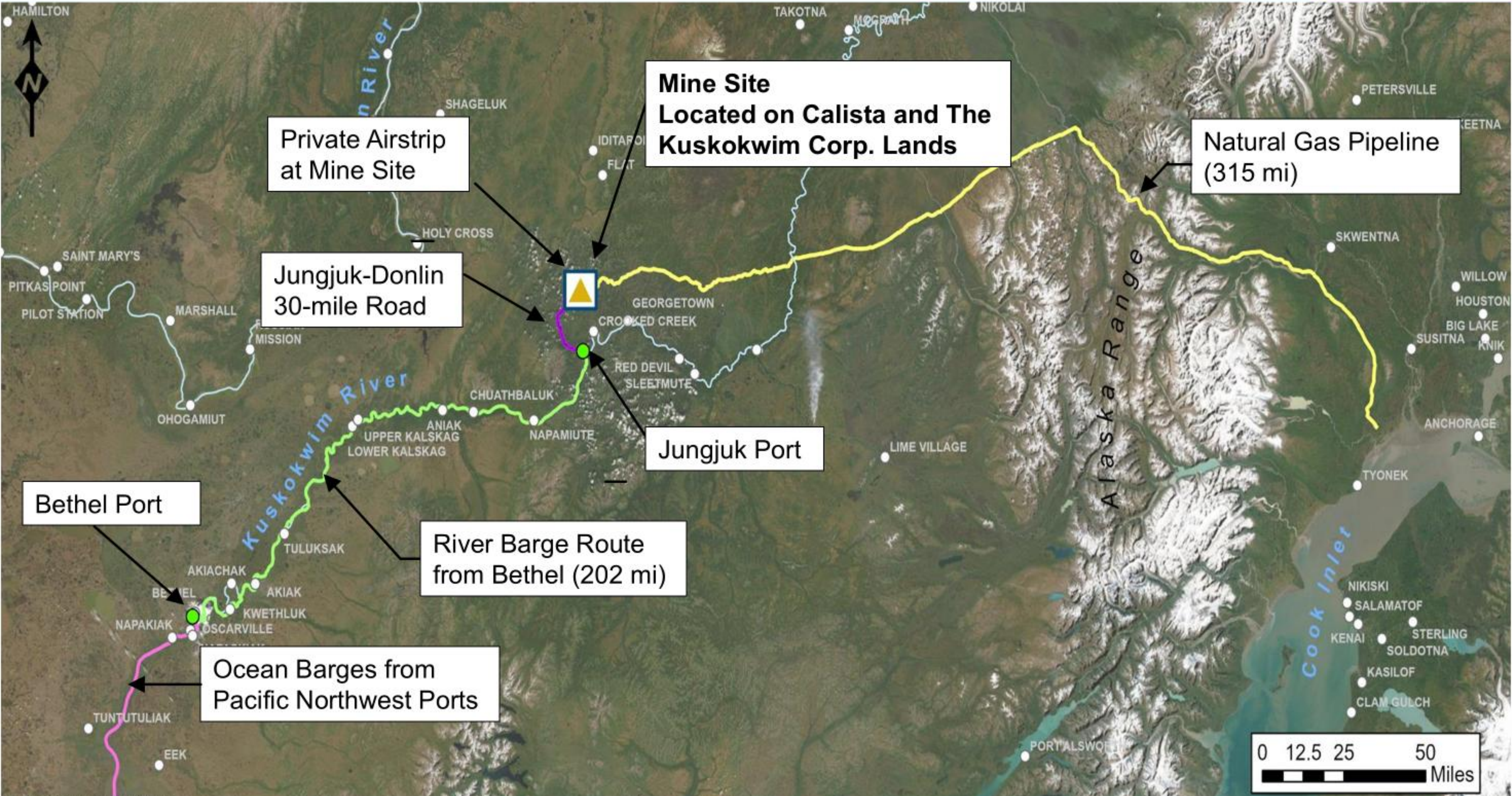
**Concentrate Loading**

Red Dog Operations and the Committee co-designed a process and protocols to adapt to marine mammal hunting activities to minimize interference.





# Project Overview





# Aquatic Resources Monitoring





# Snow Gulch Restoration Project





# Kuskokwim River Fisheries Projects

## Salmon Smolt Monitoring – George River Fish Weir



Rotary Screw Trap  
Looking Downstream



Rotary Screw Trap  
Looking Upstream



Rotary Screw Trap  
Smolt Collection



Biological Data  
Collection



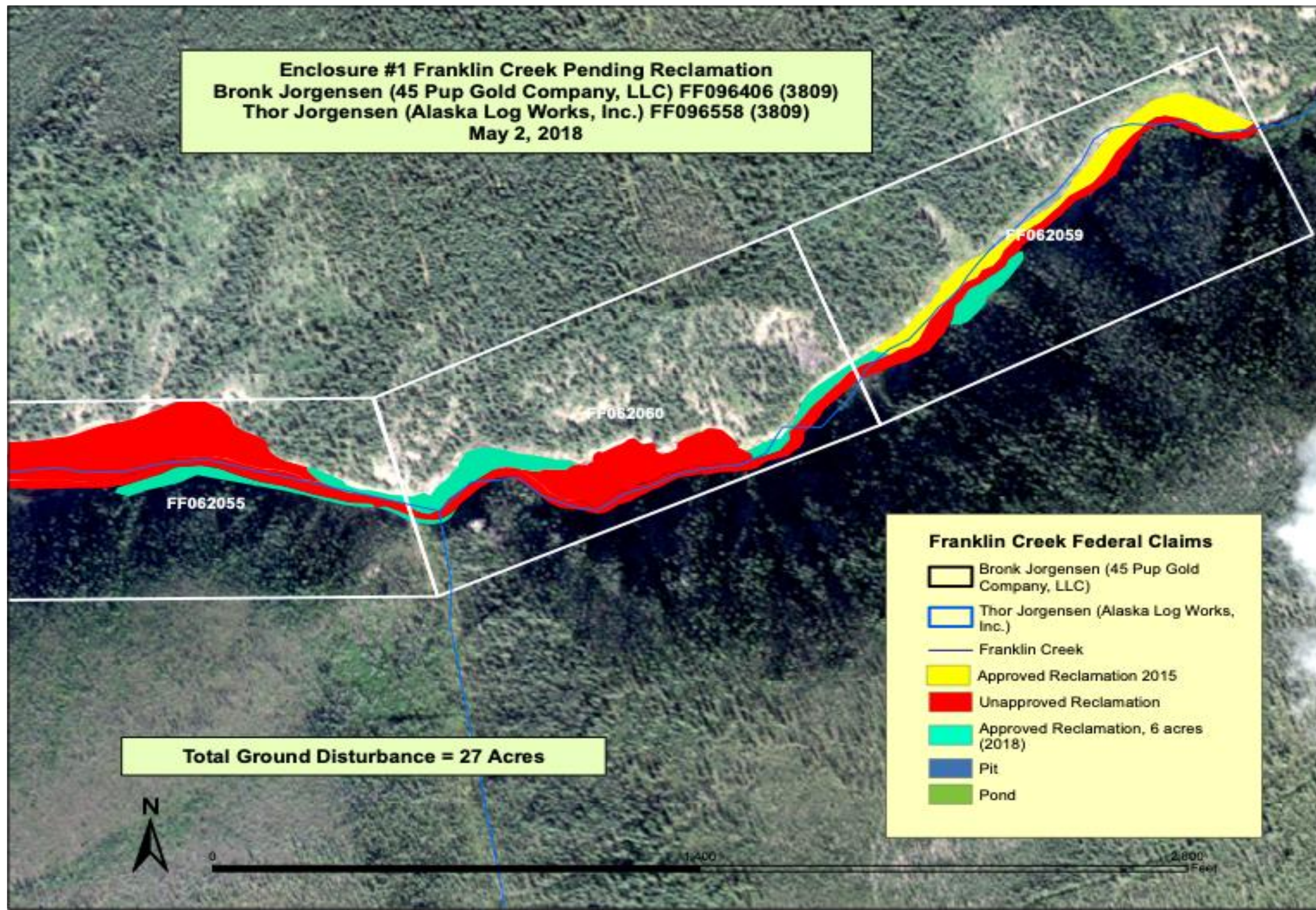


# Placer mining in Fortymile Mining District

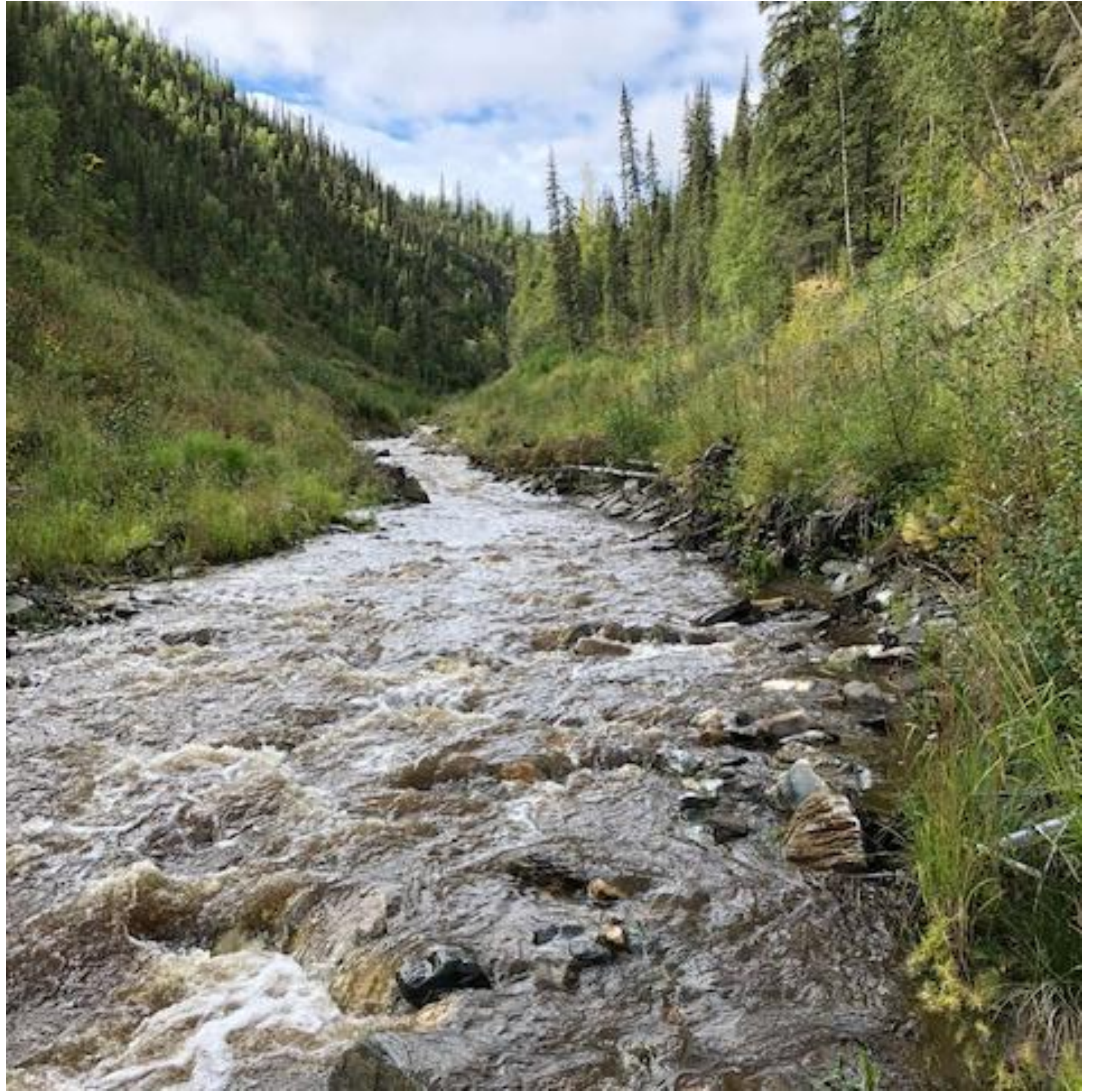




Enclosure #1 Franklin Creek Pending Reclamation  
Bronk Jorgensen (45 Pup Gold Company, LLC) FF096406 (3809)  
Thor Jorgensen (Alaska Log Works, Inc.) FF096558 (3809)  
May 2, 2018









# Jobs and Training for Alaskans

11,800

Total Jobs

\$1.1 billion

Annual Wages

72%

Average # of AK residents employed at the 6 large mines

90+

Communities where mining employees live

\$1.5 million

Invested in UA and vocational programs

**UAF** UNIVERSITY OF ALASKA FAIRBANKS Mining and Petroleum Training Service

**EMPLOYING ALASKANS FOR ALASKA**

**JOIN US!**  
Underground Mine Training Camp  
NOW ENROLLING

**Mining and Petroleum MAPTS TRAINING SERVICE**

**BASIC REQUIREMENTS**

- Be an Alaska resident
- Arrive fit for duty
- Committed to safe work procedures
- Possesses a good work attitude

**YOU WILL LEARN**

- MSHA 5000-23 Certificate
- Introduction to Underground Mining
- Underground Heavy Equipment Simulator Training
- Employability Skills and Work/Life Balance
- Worksite Health & Safety Practices
- Basic Operation of Heavy Equipment and Support Equipment
- Ground Control and Scaling
- Jackleg Drilling and Rockbolting
- Heavy Equipment Operation on surface and underground utilities installation


**ABOUT CAMP**

This remote onsite course prepares the participant for an entry-level career as a new miner at an underground mine. The course is 280 hours total and the schedule is two weeks on, two weeks off, two weeks on.

This is a four-week program that will teach participants how to: work at a remote site location; work safely in an underground mine; learn and understand the mining cycle; operate heavy equipment used at underground mines; perform light maintenance.

**CONTACT US AT**  
MAPTS, UAF  
162 College Road Soldotna, AK 99669  
(907)262-0231  
mapts@alaska.edu  
facebook.com/MAPTSUA  
www.uaf.edu/mapts

UAF is an AA/EEO employer and educational institution and prohibits illegal discrimination against any individual:  
[www.alaska.edu/nondiscrimination/](http://www.alaska.edu/nondiscrimination/)





# STATE GOVERNMENT REVENUES



**\$136 million**  
to State of Alaska

\$53 million in Mining License Tax

\$6 million in Corporate Income Tax

\$16 million in rents and royalties

\$30 million net to AIDEA for DeLong Mountain  
Regional Transportation System

\$15 million to Alaska Railroad (coal, sand & gravel)

\$17 million in material sales, other fees and taxes



**McKINLEY RESEARCH**  
GROUP, LLC







# LOCAL GOVERNMENT REVENUES



**\$49.8 million**  
to local governments

\$34.8 million to Northwest Arctic Borough  
\$10.6 million to Fairbanks North Star Borough  
\$4.2 million to City and Borough of Juneau  
\$200,000 to all other local jurisdictions



# ALASKA NATIVE CORPORATIONS

All Alaska Native Corporations benefit from mining through 7(i) and (j) royalty sharing payments

**\$3.2 billion**  
in total royalty  
payments since 1989

**\$235 million**  
in royalty payments to Alaska  
Native Corporations in 2023





**\$1.1 billion**  
spent on  
goods and  
services  
with **450+**  
**Alaska**  
**businesses**  
in 2023





# Join us tomorrow at the Juneau Mining Forum!





# Thank you

Deantha Skibinski  
Executive Director  
Alaska Miners Association  
[Deantha@alaskaminers.org](mailto:Deantha@alaskaminers.org)



Karen Matthias  
Executive Director  
Alaska Metal Mines  
[kjmatthias@akmetalmine.com](mailto:kjmatthias@akmetalmine.com)

