



April 29, 2026

The Honorable Lyman Hoffman, Co-Chair
The Honorable Donny Olson, Co-Chair
The Honorable Bert Stedman, Co-Chair
Senate Finance Committee

Alaska's homeless service providers write to express our strong, collective support for continued and sustained funding of the Alaska Housing Finance Corporation's Homeless Assistance Program (HAP).

Across the state, some 34 different organizations respond to homelessness or the threat of homelessness with these dollars. In some rural Alaska communities, the *only* shelters and supports for people experiencing homelessness are funded by HAP. The cuts threaten the very viability of programs that already operate on thin margins. Residents can get access to the very basics of life, shelter, housing and supports. These dollars bring safety, stability and connection to our most vulnerable neighbors in at least 14 communities: Anchorage, Bethel, Cordova, Fairbanks, Homer, Juneau, Kenai, Ketchikan, Kodiak, the Mat-Su, Nome, Prince of Wales, Sitka and Unalaska.

With HAP dollars, agencies deliver a full range of services including shelter for survivors of domestic violence, youth homelessness response, behavioral health services, emergency shelter and transitional housing for families, and homelessness prevention and housing stabilization. HAP funding ensures that these services are available and coordinated, allowing people to move from crisis to stability.

HAP is especially critical because it provides flexible funding that can be adapted to unique conditions. While federal funding sources are essential, they are often limited in scope. HAP fills these gaps, allowing providers to respond to winter shelter demand, support landlord engagement, and stabilize households before they fall into homelessness.

Importantly, HAP supports the full continuum of services. It funds not only emergency shelter, but also homelessness prevention and rapid rehousing. These interventions reduce inflow into homelessness and shorten the time people remain without housing. For instance, this flexibility allows Anchorage providers to meet people where they are and intervene early, reducing reliance on more costly emergency systems.

HAP supports the very interventions that reduce unsheltered homelessness: connecting people from the streets to shelter and from shelter to permanent housing. Reductions in HAP funding would result in more people living outside, increased strain on emergency services, and higher long-term costs to the public.

For decades, HAP has been a stable, effective investment in Alaska's people. In communities from Kodiak to Ketchikan, Nome to Unalaska, Fairbanks to Juneau, it remains essential to maintaining a coordinated, data-driven system working to ensure that homelessness is rare, brief, and one-time.

We respectfully urge you to maintain funding for HAP in both the capital and mental health budgets. Supporting HAP means supporting the network of Anchorage providers who are working every day to respond to homelessness with coordination, efficiency, and care.

Thank you for your continued leadership and commitment to Alaskans.

Sincerely,

Alaska Coalition on Housing and Homelessness
Alaskan Way
Anchorage Coalition to End Homelessness
AWAIC
Brother Francis Shelter of Kodiak
Catholic Social Services
City of Fairbanks
Covenant House Alaska
Fairbanks Integrated Community Services
Fairbanks Neighborhood Housing Services
Fairbanks Youth Advocates
Helping Ourselves Prevent Emergencies (HOPE)
The LeeShore Center
Partners for Progress
RurAL CAP
Sitka Homeless Coalition
Society of St. Vincent de Paul Juneau
South Peninsula Haven House
Tundra Women's Coalition
Unalaskans Against Sexual Assault & Family Violence
United Way of Anchorage

Society of St. Vincent de Paul
St. Therese Conference
8617 Teal Street
Juneau, AK 99801

*"We provide material and spiritual
charity and work for social
justice for all people"*



Hello,

04/28/2026

My name is Jennifer Skinner, and I'm the Executive Director of St. Vincent de Paul in Juneau. I want to strongly urge you to restore and protect funding for the Homeless Assistance Program in the capital budget process.

Organizations like ours, St. Vincent de Paul, demonstrates every day how targeted housing assistance transforms lives and strengthens communities. We operate transitional housing and permanent supportive housing (among many other services like affordable housing), offering stable homes paired with the support needed for long-term success. In Juneau, these efforts keep hundreds of individuals and families safely housed, reducing the strain on emergency shelters, healthcare, and other public systems.

HAP funds play a similar vital role by preventing increased risk of eviction, displacement, and homelessness. It is important to mention that housing costs are at an alarming all time high. The cost of living in our community is excessive and often leaves those we support in terrible situations, like choosing whether they pay for their phones, rent or food- but not all of them. The consideration of reducing these funds would have serious consequences. Without this support, the progress made by St. Vincent de Paul would be undermined, leaving more people vulnerable. Cutting funding means cutting services, services that are critical to this community.

Stable housing is a crucial foundation for progress in all areas of life. Without housing, families don't stay together, jobs are hard to find and retain, and hope is a fleeting thought overshadowed by daily needs. Hunger takes hold and the choices people are faced with become increasingly more difficult and often lean more towards unacceptable or even criminal.

Picture this- a young couple, newly sober, getting some community support to remain sober but not enough to feed the pregnant momma. The dad-to-be is forced to steal food to provide for his growing family. Many would ask, why not just get a job? Jobs are easier to get when you can wear clean clothes and shower, that comes with housing. Their basic needs superseded next level participation like employment. He had to steal so often that he got trespassed from most grocery stores in town. Where does he go for food and support now? Thankfully, due to funding like HAP, he and his wife ended up on our door step. We were able to house them, feed them, employ them and help them work towards stability. This was six years ago. Now this family has found and maintained affordable housing for 4 years, the parents both work in the community and their two children are thriving. None of this would have been possible without the support of HAP funding.

I humbly petition that you not only prioritize restoring HAP funding but also look for other ways to meet the budgetary needs without impacting social service programs. You see, when funding

Society of St. Vincent de Paul
St. Therese Conference
8617 Teal Street
Juneau, AK 99801

*"We provide material and spiritual
charity and work for social
justice for all people"*



gets tight the first things on the chopping block are social service agencies or the funding that makes their work possible, this only works as a budget adjustment if the state has county systems set up to bear the burden of nonprofits service cuts, which we don't have in our state. Because of the uniqueness of Alaska, it is impossible to think that cutting these lifelines in half would do anything but hurt the already delicate functionality of our social service agencies. We do the work of many with few. We often stretch our dollars beyond the ability to stretch any further. Taking away this essential support would hurt more than our bottom line, it will hurt Alaskans, the very people we are here to uphold.

This investment in our community complements the important work already being done by St. Vincent de Paul and other community partners, ensuring more people can remain in their homes and our communities can continue to thrive.

Thank you for your time and consideration.

Warm regards,

Jennifer Skinner

Executive Director, SVdP

Doniece Gott

From: Chris Gunderson <chris.gunderson@gmail.com>
Sent: Thursday, April 23, 2026 10:23 AM
To: Senate Finance Committee
Subject: Please Support Denali Family Services' Wonderland Project in the FY27 Capital Budget

Dear Senate Finance Committee

My name is Chris Gunderson and I am the Chair of the Board at Denali Family Services (DFS). I am writing to respectfully ask for your support in including DFS' *Wonderland Project* in the FY27 capital budget.

This project will fund the construction of a new outpatient behavioral health facility in Wasilla, expanding access to critical services for youth and families across the Mat-Su Valley and beyond. Currently, DFS is at capacity and has had to turn away youth in need due to limited space and capacity constraints.

The Wonderland Project will allow DFS to double in size and serve more than 150 youth annually, many of whom are experiencing complex behavioral health challenges. Without access to these services locally, youth are often placed outside of their communities or in more intensive and costly levels of care.

This investment is not only important for Mat-Su families—it is a statewide solution that helps reduce strain on Alaska's behavioral health system, lowers long-term costs, and keeps youth connected to their support networks.

I respectfully ask that you include the \$2.8 million CAPSIS request for the Wonderland Project in the FY27 capital budget.

Thank you for your time, your service to Alaska, and your commitment to supporting youth and families.

Sincerely,
Chris Gunderson

Doniece Gott

From: Zachary Crabtree <zcrabtree@denalifs.org>
Sent: Thursday, April 23, 2026 11:24 AM
To: Senate Finance Committee
Subject: Please Support Denali Family Services' Wonderland Project in the FY27 Capital Budget

Dear Senate Finance Committee,

My name is Zachary Crabtree, and I am a clinical intern with Denali Family Services (DFS). I am writing to respectfully ask for your support in including DFS' *Wonderland Project* in the FY27 capital budget.

This project will fund the construction of a new outpatient behavioral health facility in Wasilla, expanding access to critical services for youth and families across the Mat-Su Valley and beyond. Currently, DFS is at capacity and has had to turn away youth in need due to limited space and capacity constraints.

The Wonderland Project will allow DFS to double in size and serve more than 150 youth annually, many of whom are experiencing complex behavioral health challenges. Without access to these services locally, youth are often placed outside of their communities or in more intensive and costly levels of care.

This investment is not only important for Mat-Su families—it is a statewide solution that helps reduce strain on Alaska's behavioral health system, lowers long-term costs, and keeps youth connected to their support networks.

I respectfully ask that you include the \$2.8 million CAPSIS request for the Wonderland Project in the FY27 capital budget.

Thank you for your time, your service to Alaska, and your commitment to supporting youth and families.

Sincerely,

Zac

Doniece Gott

From: Kirsten McCart <kmccart@denalifs.org>
Sent: Wednesday, April 22, 2026 1:08 PM
To: Senate Finance Committee
Subject: Please Support Denali Family Services' Wonderland Project in the FY27 Capital Budget

Dear Senate Finance Committee,

My name is Kirsten McCart and I am a Case Management Director with Denali Family Services (DFS). I am writing to respectfully ask for your support in including DFS' Wonderland Project in the FY27 capital budget.

This project will fund the construction of a new outpatient behavioral health facility in Wasilla, expanding access to critical services for youth and families across the Mat-Su Valley and beyond. Currently, DFS is at capacity and has had to turn away youth in need due to limited space and staffing constraints.

The Wonderland Project will allow DFS to double in size and serve more than 150 youth annually, many of whom are experiencing complex behavioral health challenges. Without access to these services locally, youth are often placed outside of their communities or in more intensive and costly levels of care.

This investment is not only important for Mat-Su families—it is a statewide solution that helps reduce strain on Alaska's behavioral health system, lowers long-term costs, and keeps youth connected to their support networks.

I respectfully ask that you include the \$2.8 million CAPSIS request for the Wonderland Project in the FY27 capital budget.

Thank you for your time, your service to Alaska, and your commitment to supporting youth and families.

Sincerely,
Kirsten McCart, MS

Kirsten McCart, MS
Case Management Director
(907)222-2371
1251 Muldoon Rd, Suite 116
Anchorage, AK 99504



Supporting the wellness of Alaska's youth and families through community-based behavioral health services.

This message, including any attachments, is intended solely for the use of the named recipient(s) and may contain confidential and/or privileged information. Any unauthorized review, use, disclosure, or distribution of this communications is expressly prohibited. If you are not the intended recipient, please contact the sender by reply e-mail and destroy any and all of the original message.

Doniece Gott

From: Aaron Clements <aaronclements.ak@outlook.com>
Sent: Wednesday, April 22, 2026 4:18 PM
To: Senate Finance Committee
Subject: Please Support Denali Family Services' Wonderland Project in the FY27 Capital Budget

My name is Aaron Clements and I am a Mat-Su Board Member with Denali Family Services (DFS). I am writing to respectfully ask for your support in including DFS' *Wonderland Project* in the FY27 capital budget.

This project will fund the construction of a new outpatient behavioral health facility in Wasilla, expanding access to critical services for youth and families across the Mat-Su Valley and beyond. Currently, DFS is at capacity and has had to turn away youth in need due to limited space and staffing constraints.

The Wonderland Project will allow DFS to double in size and serve more than 150 youth annually, many of whom are experiencing complex behavioral health challenges. Without access to these services locally, youth are often placed outside of their communities or in more intensive and costly levels of care.

This investment is not only important for Mat-Su families—it is a statewide solution that helps reduce strain on Alaska's behavioral health system, lowers long-term costs, and keeps youth connected to their support networks.

I respectfully ask that you include the \$2.8 million CAPSIS request for the Wonderland Project in the FY27 capital budget.

Thank you for your time, your service to Alaska, and your commitment to supporting youth and families.

Sincerely,

Aaron Clements

Doniece Gott

From: Rosanna Brandon <rBrandon@denalifs.org>
Sent: Tuesday, April 21, 2026 3:11 PM
To: Senate Finance Committee
Subject: Please Support Denali Family Services' Wonderland Project in the FY 27 Capital Budget

April 21, 2026

Dear Senate Finance Committee,

My name is Rosanna Brandon, and I am a Mental Health Clinician with Denali Family Services (DFS). I am writing to respectfully ask for your support in including DFS' *Wonderland Project* in the FY27 capital budget.

This project will fund the construction of a new outpatient behavioral health facility in Wasilla, expanding access to critical services for youth and families across the Mat-Su Valley and beyond. Currently, DFS is at capacity and has had to turn away youth in need due to limited space and capacity constraints.

The Wonderland Project will allow DFS to double in size and serve more than 150 youth annually, many of whom are experiencing complex behavioral health challenges. Without access to these services locally, youth are often placed outside of their communities or in more intensive and costly levels of care.

This investment is not only important for Mat-Su families—it is a statewide solution that helps reduce strain on Alaska's behavioral health system, lowers long-term costs, and keeps youth connected to their support networks.

I respectfully ask that you include the \$2.8 million CAPSIS request for the Wonderland Project in the FY27 capital budget.

Thank you for your time, your service to Alaska, and your commitment to supporting youth and families.

Sincerely,
Rosanna Brandon

Rosanna Brandon, MS, LPC, NCC
Clinician

Denali Family Services
291 E. Swanson Ave.
Wasilla, AK 99654
Office Phone: (907) 330-2486
Cell: (907)-715-9368
Wasilla Main office: (907) 376-3275
Email: rbrandon@denalifs.org



This message, including any attachments, is intended solely for the use of the named recipient(s) and may contain confidential and/or privileged information. Any unauthorized review, use, disclosure or distribution of this communications is expressly prohibited. If you are not the intended recipient, please contact the sender by reply e-mail and destroy any and all of the original message.

Doniece Gott

From: JJ Harrier <jharrier@denalifs.org>
Sent: Sunday, March 29, 2026 11:25 AM
To: Senate Finance Committee
Subject: Support for Denali Family Services' Wonderland Project – FY27 Capital Budget Request
Attachments: FY27 Wonderland Project - Capital Prospectus.pdf

Dear Members of the Senate Finance Committee,

I hope you are doing well as you begin your work on the FY27 capital budget.

On behalf of [Denali Family Services \(DFS\)](#), I respectfully ask for your support of our **\$2.8 million CAPSIS request** to advance the **Wonderland Project**—a new two-story outpatient behavioral health facility in Wasilla near Wonderland Park.

This investment is a critical first step toward construction and will significantly expand access to care for youth and families in the Mat-Su Valley. Once complete, the facility will allow DFS to **serve up to 150 youth and teens annually** who are experiencing behavioral health challenges, providing comprehensive, wraparound services that keep young people connected to their families, schools, and communities.

DFS has a long-standing commitment to Alaska's youth and families. Since our founding in Anchorage in 1995, and the opening of our Mat-Su facility in 2002, we have worked to meet the growing behavioral health needs across the region. Today, demand continues to outpace capacity, and this project is essential to closing that gap.

The Wonderland Project has strong community support. Letters of support are included in the attached prospectus from:

- the Mat-Su Health Foundation
- the Mat-Su Borough
- Alaska Behavioral Health Association, and
- Senate District N delegation—Representative Jubilee Underwood, Representative Elexie Moore, Representative Garret Nelson, and Senator Rob Yundt.

Our President/CEO Dan Bigley and myself will be in Juneau meeting with many of you tomorrow and Tuesday to talk about this project.

We appreciate your leadership and consideration of projects that strengthen Alaska's behavioral health system and support our most vulnerable youth. Thank you for your support this week as capital budget discussions continue.

Please don't hesitate to reach out if you would like additional information (cell: 907-775-2886).

Sincerely,

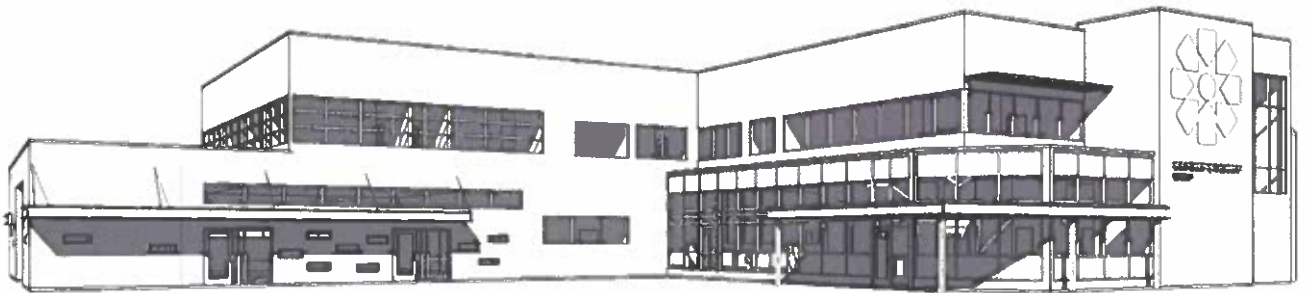
JJ Harrier
Director of Development & Communications



Denali Family
SERVICES

FY27 Capital Prospectus

The Wonderland Project



NORTHFORM
ARCHITECTURE

A Behavioral Health Infrastructure Investment for Alaska's Youth

Executive Summary

Denali Family Services (DFS) is a nonprofit behavioral health organization serving more than 200 youth and families annually across Anchorage and the Mat-Su Valley. For more than 30 years, DFS has delivered community-based, trauma-informed, mental health services to youth experiencing serious emotional disturbance (SED), developmental delays, and behavioral health challenges.

Due to sustained growth — averaging more than **11% year-over-year expansion in services** — DFS has outgrown its current Mat-Su service footprint. The proposed **Wonderland Project** is a 21,700-square-foot, two-story behavioral health facility to be constructed at the corner of W. Nelson Avenue and Lucille Street, near Wonderland Park in Wasilla. The property was purchased by DFS in 2024.

This facility will centralize and expand outpatient therapy for youth and families, therapeutic foster care support, early childhood behavioral health, and psychiatric services under one roof — serving up to 150 youth annually in the Mat-Su Valley alone.

Concept design development began in 2025 with North Form Architects. A full concept design package and cost estimate are nearing completion. Total estimated project cost is projected at approximately **\$13-15 million** (pending final cost analysis).

Now is the time to build.

About Denali Family Services

Denali Family Services (DFS) is one of Alaska's leading youth behavioral health providers. DFS delivers:

- Therapeutic foster care
- School-based behavioral health services
- Outpatient therapy
- Early childhood mental health intervention
- Wraparound services
- Case management services

DFS primarily serves Medicaid-eligible youth experiencing serious emotional disturbance (SED). The organization relies heavily on Medicaid reimbursement and state funding to support operations.

Unlike adult behavioral health services, pediatric behavioral health infrastructure in the Mat-Su Valley remains limited. DFS' expansion addresses the growing demand for community-based services to prevent:

- Out-of-home placements
- Residential institutionalization
- Juvenile justice involvement
- Out-of-state treatment placements

DFS is accredited and operates under strict state and federal behavioral health regulations.

Historical Presence in the Mat-Su Valley

DFS has served the Mat-Su Valley for over two decades:

- **2002** – DFS opened its Wasilla location, expanding wraparound services into the Valley.
- **2007** – DFS relocated to its current rented facility on Swanson Avenue.

Since that time, youth behavioral health needs have grown significantly, while facility space has remained static.

Statewide Reach

Although DFS' primary service hubs are in Anchorage and Wasilla, **clients come from across Alaska**, from Fairbanks to Bethel, Kotzebue to Ketchikan.

Youth referred from outside Anchorage and the Mat-Su Valley are often:

- In **State custody** and in need of intensive community-based treatment not available in rural communities, or
- Stepping down from **acute hospitalization or long-term residential treatment**, requiring structured community-based stabilization prior to returning home.

Without adequate facility space in the Mat-Su, youth may remain in higher levels of care longer than clinically necessary — increasing costs to the State and disrupting family reintegration.

The Need

Community Barriers in the Mat-Su Valley

The Mat-Su Valley is one of the fastest-growing regions in Alaska. However, behavioral health infrastructure for children and youth has not kept pace with population growth.

According to the *2025 Community Health Needs Assessment (CHNA) for the Mat-Su Borough*, behavioral health needs for youth in the Mat-Su Valley are on the rise, with 23% of households reporting concerns — representing nearly a threefold increase in less than a decade. **Here are the barriers in the Mat-Su:**

- Wait times for behavioral health care can exceed **six months**, particularly for Medicaid recipients.
 - **Provider shortages** continue to strain the system
 - Families report **barriers to housing, transportation, childcare, and behavioral health services.**
 - **Limited indoor community spaces** contribute to isolation during long winter months.
-

Continued DFS Growth

DFS currently serves **nearly 80 youth at its Wasilla location** with an **average 11% year-over-year growth rate** in services. Demand continues to rise as more youth are referred to outpatient therapy, psychiatric services, therapeutic foster care, and stabilization support.

DFS' Wasilla team now consists of **24 staff members operating out of a rented facility on Swanson Avenue**. The facility has reached full capacity and cannot accommodate additional clinicians, supervisors, or support staff.

The proposed Wonderland Project facility would allow DFS to expand staffing capacity to **up to 40 employees** and serve **up to 150 youth and teens**, ensuring ample room for continued service growth and reduced wait times.

DFS Service Growth Data

DFS' Mat-Su growth trends demonstrate sustained and accelerating need:

- **FY23:** 69 youth served in the Mat-Su Valley (9% increase from FY22)
- **FY24:** 79 youth served in the Mat-Su Valley (14% increase from FY23)
- **FY25:** 69 youth served in the Mat-Su Valley (growth stalled due to capacity)
- Current annual service volume: **75–85 youth**

Nearly half of youth served by DFS in the Mat-Su begin their care journey through admission into our therapeutic foster homes, making this program the primary entry point into comprehensive behavioral health treatment. However, limited clinical staffing in the Mat-Su restricts access to outpatient and wraparound services, constraining the program's ability to grow and serve more children in need:

- **FY24:** 34 youth were placed into 16 therapeutic foster homes in the Mat-Su
- **FY25:** 40 youth were placed into 14 therapeutic foster homes in the Mat-Su
- These youth represented **43% of all youth served by DFS in the Mat-Su Valley**

Expansion strains DFS' current infrastructure and administrative capacity.

Capacity Constraints

Between June and December 2025, DFS was **unable to accept nearly ten intake referrals a week from the Mat-Su Valley**, due to either program **capacity limits** or the **inability to secure an appropriate foster home** match — both of which reflect overall system capacity constraints.

The current Swanson Avenue facility:

- Is fully occupied by 24 staff
- Lacks sufficient therapy and sensory rooms for continued clinician growth
- Limits psychiatric expansion
- Restricts early childhood program growth
- Reduces efficiency of multidisciplinary collaboration

Without expansion, DFS risks:

- Extended waitlists
 - Staff burnout
 - Inability to meet state custody stabilization needs
 - Lost opportunity to prevent out-of-home placements
-

Why Wonderland Is Necessary

The Wonderland Project is not merely an expansion — it is an infrastructure correction aligned with two decades of growth.

A purpose-built, 21,700-square-foot behavioral health facility will:

- Eliminate capacity bottlenecks
- Increase access to early intervention
- Expand therapeutic foster care infrastructure
- Support youth stepping down from institutional settings
- Stabilize families sooner and more effectively

Demand is here.

Staff are here.

Community need is here.

What is missing is the building.

Description of the Wonderland Project

The Wonderland Project will establish a purpose-built, two-story, 21,700-square-foot behavioral health facility in the Mat-Su Valley.



Planned Facility Features

- Individual and family therapy offices
- Early childhood therapy suites
- Group therapy rooms
- Psychiatric evaluation offices
- Therapeutic foster care support offices
- Supervised visitation rooms
- Training and community meeting space
- Staff offices and administrative support areas

This centralized facility will:

- Increase access to care
- Reduce fragmentation of services
- Improve collaboration between clinicians
- Support integrated, trauma-informed care

Projected service impact: **150+ youth annually**, with room for continued growth.

Project Phases & Costs

(Estimates pending final North Form cost analysis)

Phase I: Planning & Design (FY26–FY27)

- Concept Design Package – Completed
- Cost Estimation – In Progress
- Marketing Renderings – In Progress
- Estimated Phase I Cost: ~\$1.2 million

Phase II: Construction (FY27–FY28)

- 21,700-square-foot two-story facility
- Sitework and utilities
- Parking and access improvements
- Estimated Phase II Cost: ~\$11-13 million

Phase III: Interior Build-Out & Launch (FY28)

- Furnishings
- Technology infrastructure
- Security systems
- Clinical equipment
- Estimated Phase III Cost: ~\$1–2 million

Total Estimated Project Cost: \$13-15 million

(Final cost will be confirmed upon completion of full construction estimates)

Fundraising Strategy

The Wonderland Project will be funded through a strategic four-tiered capital approach, designed to leverage public investment, private philanthropy, and community support.

Tier I: Federal Appropriations

DFS will pursue \$3 million in community project funding through U.S. Senator Lisa Murkowski's appropriation process. Federal support will help offset major construction costs and demonstrate national investment in Alaska's youth behavioral health infrastructure.

Tier II: State Capital Request

DFS is seeking a \$2.8 million in FY27 capital appropriations from the Alaska Legislature to support construction of the Wonderland Project. State investment is critical in strengthening Alaska's community-based behavioral health system and reducing reliance on higher-cost institutional placements.

Tier III: Foundation Support

DFS will pursue major capital investments from key philanthropic partners, including:

- Mat-Su Health Foundation
- Rasmuson Foundation
- Alaska Mental Health Trust Authority
- Carr Foundation & Anne E. Casey Foundation

Foundation support will help close capital gaps and may be leveraged to match public funding.

Tier IV: Corporate & Community Campaign

DFS will launch a community-based capital campaign that includes:

- Major donor cultivation
- Corporate sponsorships
- Naming opportunities
- Business partnerships
- Community fundraising events

This tier ensures that the Wonderland Project is not only publicly funded, but community owned.

DFS maintains stable Medicaid revenue and sustainable financial operations. Debt financing may be leveraged strategically once capital commitments are secured.

Organizational Financial Stability

DFS is a financially stable nonprofit organization operating primarily through Medicaid reimbursement and state behavioral health contracts.

While Medicaid supports delivery service, it does **not** fund capital infrastructure. Therefore, capital investment from public and private partners is essential.

DFS has demonstrated:

- Responsible fiscal management
- Program growth aligned with demand
- Successful grant acquisition history
- Strong community partnerships

Implementation Timeline

Design Concept Completion – Early 2026

Capital Campaign Launch – March 2026

State Legislative Advocacy – 2026 Session

Planning & Design Completion: Early 2027

Foundation & Funder Advocacy: Spring 2027

Construction Begins: May 2027

Groundbreaking – Fall 2028 (pending full funding)

Project Completion – Fall/Winter 2028

(Timeline is dependent upon capital funding acquisition)

DFS Wonderland Committee

Dan Bigley, President/CEO, dbigley@denalifs.org

JJ Harrier, Director of Development & Communications, jharrier@denalifs.org

Pete Houston, Director of Operations, phouston@denalifs.org

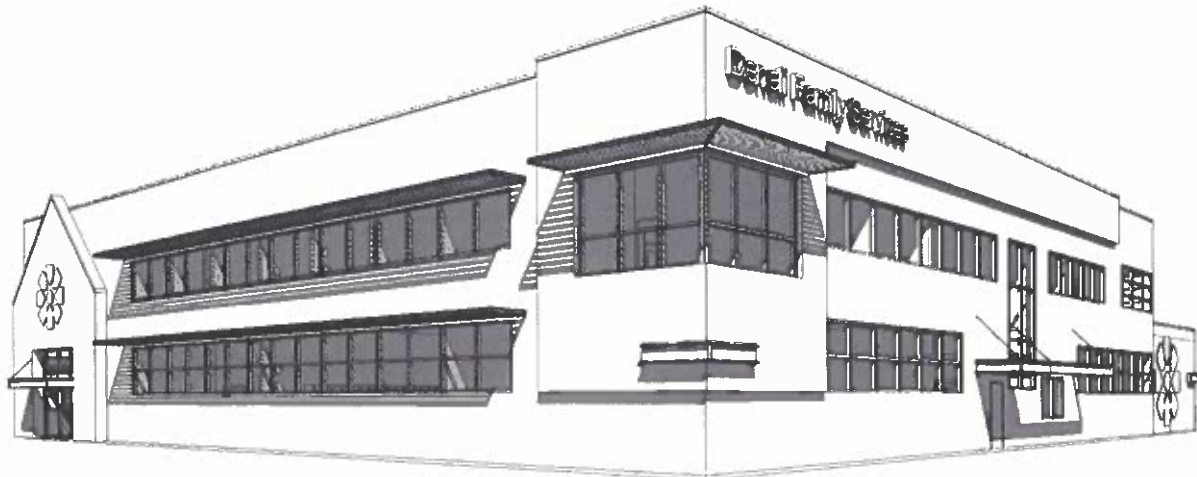
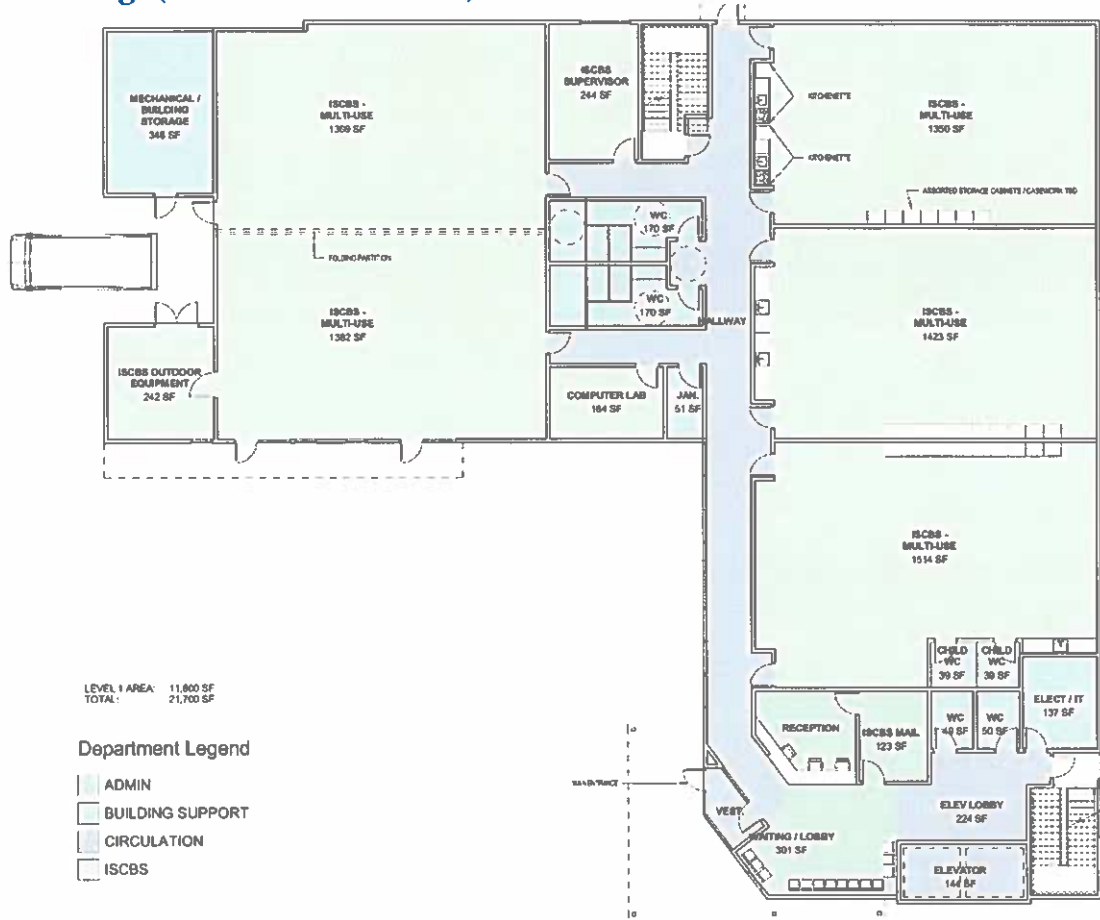
John Stackhouse, CFO, jstackhouse@denalifs.org

Aaron Clements, Board of Directors, aclements@ccsalaska.org

Tyler Healy, Board of Directors, ty.healy4444@gmail.com

North Form Architects – Design Partner

Concept Drawings (North Form Architects)





With 30 years of service to Alaska's children and families, Denali Family Services has grown alongside the communities it serves.

Now is the time to build.

Questions?

JJ Harrier
 Director of Development & Communications
 Denali Family Services
 1251 Muldoon Road, Suite 116
 Anchorage, AK 99504
 (907) 330-2484
jharrier@denalifs.org



February 24, 2026

Dear Prospective Funders and Community Partners,

On behalf of the Alaska Behavioral Health Association (ABHA), we are pleased to offer our strong support for the Wonderland Project, an initiative of Denali Family Services designed to expand youth behavioral health services in the Mat-Su Valley and strengthen Alaska's community-based system of care.

Across Alaska, behavioral health providers are facing unprecedented demand for youth services. In the Mat-Su Valley, the 2025 Community Health Needs Assessment reports that 23% of households express concerns about youth behavioral health—a nearly threefold increase in less than a decade. This data reflects statewide trends that ABHA members see daily: increasing rates of anxiety, depression, trauma-related disorders, substance use risk, and neurodevelopmental diagnoses among children and adolescents. As a statewide association representing behavioral health providers, we recognize the urgent need to expand capacity in regions experiencing rapid population growth, including the Mat-Su.

Denali Family Services currently serves 70 to 80 youth in its Wasilla location and has experienced approximately 22% growth year over year. Operating at full capacity in its rented Swanson Avenue facility, 24 staff members deliver therapeutic foster care, outpatient treatment, and wraparound services. Space constraints have already resulted in denied intakes due to capacity limitations. Nearly half of the youth served in the Mat-Su begin their journey through therapeutic foster care placements, where trauma-informed homes provide stability and treatment foundations. However, limited clinical and program space restricts the organization's ability to scale outpatient and community-based supports – services that are critical to keeping youth in their communities and reducing reliance on higher levels of care.

The proposed 19,600-square-foot, two-story Wonderland facility will allow Denali Family Services to expand from 24 to up to 40 staff and increase service capacity to more than 150 youth annually. This expansion will meaningfully strengthen the region's behavioral health continuum, improve access to timely and appropriate care, and reduce costly out-of-region placements. From a systems perspective, this project aligns with statewide efforts to enhance early intervention, trauma-informed care, workforce development, and community-based service delivery.

As one of the few agencies in the state offering Therapeutic Treatment Homes, it is essential that ABHA and key decision-makers continue to support the critical services provided by Denali Family Services. The clinical care, school-based programs, and community engagement initiatives DFS delivers to youth and families serve as model programs, demonstrating meaningful success in treatment, intervention, and prevention. Alaskans benefit significantly from the work of DFS providers, and supporters can be confident that their funding is used responsibly and produces strong, measurable outcomes.

ABHA deeply appreciates community partners like Denali Family Services who are dedicated to serving youth and families. Its efforts are both vital and transformative for the people it supports. We are confident that investing in its mission and this project will generate meaningful, lasting benefits for the entire Mat-Su Valley community. ABHA strongly encourages public, private, and philanthropic partners to invest in the Wonderland Project. Strategic investment in youth behavioral health infrastructure is essential to building a resilient, effective, and sustainable system of care for Alaska's children and families.

Thank you for your commitment to advancing behavioral health in Alaska and for considering support of this important initiative.

Sincerely,



Dr. Victoria Kildal, CEO
Lance Johnson, COO
Alaska Behavioral Health Association





MATANUSKA-SUSITNA BOROUGH Office of the Mayor

350 East Dahlia Avenue • Palmer, AK 99645
Phone (907) 861-8682 / Cell (907) 795-8133 / Fax (907) 861-8669

February 23, 2026

Senator Lisa Murkowski
510 L Street, Suite 600
Anchorage, AK 99501-1956

RE: Denali Family Services FY27 Capital Initiative, *Wonderland Project*

Dear Senator Murkowski,

On behalf of the Mat-Sus Borough, we offer our strong support for Denali Family Services' (DFS) FY27 capital request for the *Wonderland Project*, a proposed 21,700-square-foot behavioral health facility in Wasilla near Wonderland Park.

For more than 20 years, DFS has provided critical services to youth and families in the Mat-Su Valley. The organization currently serves 75 to 85 youth annually in the Valley and has experienced steady growth of approximately 11 percent each year. Its existing rented facility on Swanson Avenue is at full capacity, limiting expansion despite increasing demand. Between June and December 2025 alone, DFS was unable to accept 46 referrals from the Valley due to space and placement constraints.

The 2025 Community Health Needs Assessment identified rising behavioral health concerns among local households, reinforcing the need for expanded services. The *Wonderland Project* will consolidate and expand outpatient therapy, early childhood mental health services, therapeutic foster care support, psychiatric care, and supervised visitation. The new facility is expected to serve more than 150 youth annually, with capacity for continued growth.

This project represents a strategic, long-term investment in local behavioral health infrastructure. Expanding services close to home will help stabilize youth, strengthen families, and reduce reliance on higher-cost institutional placements.

We respectfully encourage favorable consideration of DFS's federal and state capital funding requests and appreciate your support of this important initiative.

Sincerely,

Handwritten signature of Edna DeVries in black ink.

Edna DeVries
Mayor
Edna.DeVries@matsu.gov

Handwritten signature of Michael Brown in blue ink.

Michael Brown
Borough Manager
Mike.Brown@matsu.gov

Providing Outstanding Borough Services to the Matanuska-Susitna Community.



**MAT-SU HEALTH
FOUNDATION**

777 N. Crusey Street, Suite A201 • Wasilla, AK 99654
Phone: (907) 352-2863 • Fax (907) 352-2865
www.healthymatsu.org

February 25, 2026

Dear Community Partners and Prospective Funders,

The Mat-Su Health Foundation is pleased to offer its strong support for the Wonderland Project, an initiative of Denali Family Services that will significantly expand youth behavioral health services in the Mat-Su Valley. Improving access to behavioral health care for children and adolescents is central to our mission of improving the health and wellness of Mat-Su residents, and the need for expanded capacity in this area has never been more urgent.

The 2025 Community Health Needs Assessment for the Mat-Su Borough reports that 23% of households express concerns about youth behavioral health—a nearly threefold increase in less than a decade. These findings align with what we hear from families, schools, providers, and community partners across the Valley: youth are experiencing increasing levels of anxiety, depression, trauma exposure, and neurodevelopmental challenges, and the system's capacity to respond is strained. Denali Family Services currently serves 70 to 80 youth in its Wasilla location and has experienced approximately 22% growth year over year. The organization operates at full capacity in its rented Swanson Avenue facility, with 24 staff working in space that no longer supports continued growth. Intake denials due to capacity limitations highlight the urgent need for expansion.

Nearly half of Denali Family Services' Mat-Su youth begin services through therapeutic foster care placements, where trauma-informed homes provide a critical foundation for stabilization and healing. However, limited physical space and staffing capacity restrict the organization's ability to expand outpatient, wraparound, and community-based services that allow youth to remain close to family and local supports. The proposed 19,600-square-foot, two-story Wonderland facility will increase staffing capacity from 24 to up to 40 team members and expand services to more than 150 youth annually—substantially strengthening the region's behavioral health infrastructure.

The Wonderland Project represents a strategic investment in prevention, early intervention, and long-term community well-being. By increasing local access to high-quality behavioral health services, the project will reduce reliance on higher-cost and out-of-region placements, support family stability, improve educational and social outcomes, and strengthen the overall health system in the Mat-Su Valley.

We encourage philanthropic, corporate, and public partners to consider supporting this important initiative. Collaborative investment in youth behavioral health today will yield lasting benefits for families, schools, and the broader community tomorrow.

Sincerely,

Vandana Ingle
Chief Community Impact Officer
Mat-Su Health Foundation (907) 355-3303 | vingle@healthymatsu.org

“Improving the health and wellness of Alaskans living in the Mat-Su!”

Alaska State Legislature

34th Legislature

2025-2026

Session:
State Capitol, Room 112
Juneau, Alaska 99801-1182
907-465-2186
1-800-565-2186



Interim:
600 East Railroad Avenue
Wasilla, Alaska 99654
907-373-1842
Rep.Jubilee.Underwood@akleg.gov

Representative Jubilee Underwood

House District 27

March 27, 2026

Letter of Support for the Wonderland Project

Dear Denali Family Services,

A few members of the Mat-Su Delegation are pleased to offer our strong support for the Wonderland Project, an initiative to expand outpatient youth behavioral health services in the Mat-Su Valley and strengthen Alaska's community-based system of care.

Behavioral health providers across Alaska are experiencing unprecedented demand. The 2025 Mat-Su Community Health Needs Assessment reports that 23 percent of households have concerns about youth behavioral health, nearly triple the rate from less than a decade ago. Rising rates of anxiety, depression, trauma-related disorders, substance use risk, and neurodevelopmental diagnoses highlight the urgent need to expand capacity in our rapidly growing region.

Denali Family Services currently serves 70 to 80 youth annually at its Wasilla location and has experienced approximately 22 percent year-over-year growth. Operating at full capacity in its rented Swanson Avenue facility, 24 staff members deliver therapeutic foster care, outpatient treatment, and wraparound services. Space constraints have already resulted in denied intakes.

The proposed 21,700 square foot, two-story Wonderland facility at Nelson Avenue and Lucille Street, with an estimated cost of 15 million dollars, will allow expansion to 40 staff and increase service capacity to more than 150 youth annually. The new facility will also provide dedicated, year-round space designed to support youth and teens.

This project will strengthen the Mat-Su behavioral health continuum, improve timely access to care, and reduce costly out-of-region placements. Strategic investment in youth behavioral health infrastructure is essential to building a resilient and sustainable system of care for Alaska's children and families.

Respectfully,



Representative Jubilee Underwood



Representative Elexie Moore



Senator Rob Yundt



Representative Garret Nelson



JUNEAU PUBLIC LIBRARIES

292 MARINE WAY, JUNEAU ALASKA 99801 907.586.5249
A DEPARTMENT OF THE CITY AND BOROUGH OF JUNEAU

Senate Finance Committee
State Senate
Alaska State Capitol
120 4th Street Room 3
Juneau, Alaska 99801

Dear Senate Finance Committee:

Thank you for all you do in support of Alaskan library users and Alaska libraries. I am writing to request support for the State Library Electronic Doorway (SLED) and the Alaska Library Catalog (ALC). SLED is a statewide web-based service with a wide variety of electronic resources used by universities, school districts, home school families, and researchers, and supports learners of all ages.

The Alaska Library Catalog is a cooperative network of public, academic, special and K-12 school libraries across Alaska which serves communities of all sizes. The Juneau Public Libraries depend on this system to serve our local residents. As a member library of ALC, Juneau public library users benefit from access to over 3 million items. ALC is a remarkable library consortium that combines a wide variety of types of library, and saves operating costs for libraries across the state.

The Juneau Public Library and our Juneau patrons rely on SLED and ALC for access to more resources and materials than our soon-to-shrink municipal budget could ever provide. Full funding of both SLED and ALC helps the Juneau Public Libraries offer a greater array of online resources and save on the cost of local catalog hosting and maintenance. The loss of SLED or ALC would be devastating to the Juneau Public Library system.

Due to budget reductions and increased costs, financial support is needed to keep SLED and ALC operational over the next two years. The capital funding being requested would be spent to bridge funding and maintain the level of library service that our patrons in Juneau and across the state depend on. Capital funding now will help SLED and ALC sustain our operations.

Thank you again for all you do in support of Alaska library users. I hope they can all depend on your continued support of Alaska library resources like the Statewide Library Electronic Doorway and the Alaska Library Consortium. Please don't hesitate to contact me with any questions you may have.

Yours sincerely,

A handwritten signature in black ink that reads "Catherine Melville".

Catherine Melville
Library Director
Juneau Public Libraries
292 Marine Way
Juneau AK 99801

Doniece Gott

From: Jack Amon <jack.amon.ak@gmail.com>
Sent: Tuesday, April 21, 2026 8:05 AM
To: Senate Finance Committee
Subject: support for Denali Family Servises

Dear Senate Finance Committee members,

My name is Jack Amon, and my Daughter Katrina Eggers is the Director of Training & Development with Denali Family Services (DFS). I am writing to respectfully ask for your support in including DFS' *Wonderland Project* in the FY27 capital budget.

This project will fund the construction of a new outpatient behavioral health facility in Wasilla, expanding access to critical services for youth and families across the Mat-Su Valley and beyond. Currently, DFS is at capacity and has had to turn away youth in need due to limited space and staffing constraints.

The Wonderland Project will allow DFS to double in size and serve more than 150 youth annually, many of whom are experiencing complex behavioral health challenges. Without access to these services locally, youth are often placed outside of their communities or in more intensive and costly levels of care.

As a resident of the MatSu Valley I believe that this investment is not only important for Mat-Su families—it is a statewide solution that helps reduce strain on Alaska's behavioral health system, lowers long-term costs, and keeps youth connected to their support networks.

I respectfully ask that you include the \$2.8 million CAPSIS request for the Wonderland Project in the FY27 capital budget.

Thank you for your time, your service to Alaska, and your commitment to supporting youth and families.

Sincerely,

Jack Amon
4705 S Hibbard Lane
Big Lake, AK 99623
email: jack.amon.ak@gmail.com

Jack Amon
email: jack.amon.ak@gmail.com
Cell: (907)229-3273

Doniece Gott

From: Virginia Rose <VRose@denalifs.org>
Sent: Friday, April 17, 2026 10:15 AM
To: Senate Finance Committee
Subject: Please Support Denali Family Services' Wonderland Project in the FY27 Capital Budget

Dear Senate Finance Committee,

My name is Virginia Rose, and I am a Foster Care Supervisor with Denali Family Services (DFS). I am writing to respectfully ask for your support in including DFS' *Wonderland Project* in the FY27 capital budget.

This project will fund the construction of a new outpatient behavioral health facility in Wasilla, expanding access to critical services for youth and families across the Mat-Su Valley and beyond. Currently, DFS is at capacity and has had to turn away youth in need due to limited space and capacity constraints.

The Wonderland Project will allow DFS to double in size and serve more than 150 youth annually, many of whom are experiencing complex behavioral health challenges. Without access to these services locally, youth are often placed outside of their communities or in more intensive and costly levels of care.

This investment is not only important for Mat-Su families—it is a statewide solution that helps reduce strain on Alaska's behavioral health system, lowers long-term costs, and keeps youth connected to their support networks.

I respectfully ask that you include the \$2.8 million CAPSIS request for the Wonderland Project in the FY27 capital budget.

Thank you for your time, your service to Alaska, and your commitment to supporting youth and families.

Sincerely,

Virginia Rose, HS-BCP

Foster Care Supervisor

Cell: (907) 727-0349

Office: (907) 222-2317

291 E. Swanson Ave.

Wasilla, AK 99654



Supporting the wellness of Alaska's youth and families through community-based behavioral health services.

This message, including any attachments, is intended solely for the use of the named recipient(s) and may contain confidential and/or privileged information. Any unauthorized review, use, disclosure, or distribution of this communication is expressly prohibited. If you are not the intended recipient, please contact the sender by reply e-mail and destroy any and all of the original message.

Doniece Gott

From: Betty Tunnell <btunnell@denalifs.org>
Sent: Friday, April 17, 2026 10:43 AM
To: Senate Finance Committee
Subject: Please Support Denali Family Services' Wonderland Project in the FY27 Capital Budget

Dear Senate Finance committee,

My name is Betty Tunnell, and I am a Behavioral Health Associate supervisor with Denali Family Services (DFS). I am writing to respectfully ask for your support in including DFS' *Wonderland Project* in the FY27 capital budget.

This project will fund the construction of a new outpatient behavioral health facility in Wasilla, expanding access to critical services for youth and families across the Mat-Su Valley and beyond. Currently, DFS is at capacity and has had to turn away youth in need due to limited space and capacity constraints.

The Wonderland Project will allow DFS to double in size and serve more than 150 youth annually, many of whom are experiencing complex behavioral health challenges. Without access to these services locally, youth are often placed outside of their communities or in more intensive and costly levels of care.

This investment is not only important for Mat-Su families—it is a statewide solution that helps reduce strain on Alaska's behavioral health system, lowers long-term costs, and keeps youth connected to their support networks.

As a staff at Denali Family Services for more than 14 years, I can tell you that we have been running out of space to help the youth in our community. I personally have seen hundreds of youth in my time here. We are doing great things. Please help us continue to support the youth who need us to become positive, functioning adults in our state.

I respectfully ask that you include the \$2.8 million CAPSIS request for the Wonderland Project in the FY27 capital budget.

Thank you for your time, your service to Alaska, and your commitment to supporting youth and families.

Sincerely,
Betty Tunnell

Betty Tunnell
Valley BHA Supervisor
School and Community Based Services
Denali Family Services
Office: 907-330-2412
Cell phone: 907-715-9726
Fax: 907-917-5390

David P. Moxley, Ph.D.
6442 Blackberry Street
Anchorage, Alaska 99502

April 16, 2026

Senators Bishop and Stedman
Senate Finance Committee
The Alaska State Legislature

Dear Senators Bishop and Stedman:

My name is Dr. David Moxley, and I am a long standing board member with Denali Family Services (DFS). I am writing to respectfully ask for your support in including DFS' *Wonderland Project* in the FY27 capital budget. This project will fund the construction of a new outpatient behavioral health facility in Wasilla, expanding access to critical services for youth and families across the Mat-Su Valley and beyond. Currently, DFS is at capacity because of space limitations negatively affecting staffing in Wasilla. DFS has had to turn away young people in need due to limited space and staffing constraints. The Wonderland Project is critical to the advancement of behavioral health services in Wasilla and the valley, so they are accessible for young people and their families. As indicated by its name, DFS is a family-centric behavioral health organization integrating psychiatric care, social services, mental health care, and supportive educational options for young people and their families. DFS offers accredited, licensed, and certified behavioral health services designed to promote the health, development, and functioning of youth in their communities and the schools serving them.

The Wonderland Project will allow DFS to double in size and serve more than 150 youth annually, many of whom are experiencing complex behavioral health challenges. Without access to these services locally, youth are often placed outside of their communities or in more intensive and costly levels of care.

This investment is not only important for Mat-Su families—it is a statewide solution that helps reduce strain on Alaska's behavioral health system, lowers long-term costs, and keeps youth connected to their support networks.

I respectfully ask that you include the \$2.8 million CAPSIS request for the Wonderland Project in the FY27 capital budget. This investment will leverage local growth in employment including the addition of staff working in Wasilla but also impacting positively the employment and productivity of family members whose children and youth receive care.

Thank you for your time, your service to Alaska, and your commitment to supporting youth and families.

Sincerely,

David Moxley

Doniece Gott

From: Dan Bigley <dbigley@denalifs.org>
Sent: Thursday, April 16, 2026 5:06 PM
To: Senate Finance Committee
Subject: Please Support Denali Family Services' Wonderland Project in the FY27 Capital Budget

Dear Members of the Senate Finance Committee,

My name is Dan Bigley and I serve as the President/CEO of Denali Family services, a community behavioral health organization that's been serving Alaska's youth and families for over 30-years.

The youth we serve are frequently at risk of psychiatric hospitalization or being placed in residential treatment settings either in, or outside of Alaska. DFS provides intensive behavioral health services in community settings so that youth can stabilize and increase their level of functioning while attending community schools, maintain connections with friends and family members, maintain access to sports and other community-based activities, and continue developing the skills necessary to transition into adulthood with stable housing, employment, and healthy relationships to support ongoing resiliency.

Although we are based out of Anchorage and Wasilla, we serve youth from all over Alaska through our therapeutic foster care program. As the largest program of our kind in the State, we serve about 150 youth at any given time and serve about 70 youth each day in our therapeutic foster care program. About 70% of the youth we serve are identified by the courts as "children in need of aid" and are in the custody of the State-of Alaska.

Sadly, there are just not enough homes or services to go around. DFS has operated out of the same rental space in Wasilla since 2007, and although our program has grown considerably we have no further space for expansion. In the past 6-months, we have had to deny services for 46 youth in our Wasilla location alone due to capacity constraints.

This is why I am writing to respectfully ask for your support in including DFS' *Wonderland Project* in the FY27 capital budget.

This project will fund the construction of a new outpatient behavioral health facility in Wasilla, expanding access to critical services for youth and families across the Mat-Su Valley and beyond. The Wonderland Project will allow DFS to double the size of our Mat-Su operations and serve more than 150 youth annually, many of whom are experiencing complex behavioral health challenges. Without access to these services locally, youth are often placed outside of their communities or in more intensive and costly levels of care.

This investment is not only important for Mat-Su families—it is a statewide solution that helps reduce strain on Alaska's behavioral health system, lowers long-term costs, and keeps youth connected to their support networks.

I respectfully ask that you include the \$2.8 million CAPSIS request for the Wonderland Project in the FY27 capital budget.

Doniece Gott

From: Katrina Eggers <keggers@denalifs.org>
Sent: Thursday, April 16, 2026 8:55 AM
To: Senate Finance Committee
Subject: Please Support Denali Family Services' Wonderland Project in the FY27 Capital Budget

Dear Senate Finance Committee members,

My name is Katrina Eggers, and I am the Director of Training & Development with Denali Family Services (DFS). I am writing to respectfully ask for your support in including DFS' *Wonderland Project* in the FY27 capital budget.

This project will fund the construction of a new outpatient behavioral health facility in Wasilla, expanding access to critical services for youth and families across the Mat-Su Valley and beyond. Currently, DFS is at capacity and has had to turn away youth in need due to limited space and staffing constraints.

The Wonderland Project will allow DFS to double in size and serve more than 150 youth annually, many of whom are experiencing complex behavioral health challenges. Without access to these services locally, youth are often placed outside of their communities or in more intensive and costly levels of care.

This investment is not only important for Mat-Su families—it is a statewide solution that helps reduce strain on Alaska's behavioral health system, lowers long-term costs, and keeps youth connected to their support networks.

I respectfully ask that you include the \$2.8 million CAPSIS request for the Wonderland Project in the FY27 capital budget.

Thank you for your time, your service to Alaska, and your commitment to supporting youth and families.

Sincerely,

Katrina Eggers, LPC *(she/her)*
Director of Training & Development
(907)222-2328
1251 Muldoon Rd. Suite 116
Anchorage, AK 99504



Supporting the wellness of Alaska's youth and families through community-based behavioral health services.

Doniece Gott

From: Cameron Adams <CAdams@denalifs.org>
Sent: Thursday, April 16, 2026 9:17 AM
To: Senate Finance Committee
Subject: Please Support Denali Family Services' Wonderland Project in the FY27 Capital Budget

Dear Senate Finance Committee,

My name is Cameron Adams, and I am the Assistant Clinical Director with Denali Family Services (DFS). I am writing to respectfully ask for your support in including DFS' *Wonderland Project* in the FY27 capital budget.

This project will fund the construction of a new outpatient behavioral health facility in Wasilla, expanding access to critical services for youth and families across the Mat-Su Valley and beyond. Currently, DFS is at capacity and has had to turn away youth in need due to limited space and staffing constraints.

The Wonderland Project will allow DFS to double in size and serve more than 150 youth annually, many of whom are experiencing complex behavioral health challenges. Without access to these services locally, youth are often placed outside of their communities or in more intensive and costly levels of care.

This investment is not only important for Mat-Su families—it is a statewide solution that helps reduce strain on Alaska's behavioral health system, lowers long-term costs, and keeps youth connected to their support networks.

I respectfully ask that you include the \$2.8 million CAPSIS request for the Wonderland Project in the FY27 capital budget.

Thank you for your time, your service to Alaska, and your commitment to supporting youth and families.

Sincerely,

Cameron Adams, LCSW, LPC-S (she/her)

Assistant Clinical Director

Office (907) 222-2311

Cell (907) 632-9026

1251 Muldoon Rd. Suite 116

Anchorage, AK 99504



Our Mission: To support the wellness of Alaska's youth and families through community-based behavioral health services.

This message, including any attachments, is intended solely for the use of the named recipient(s) and may contain confidential and/or privileged information. Any unauthorized review, use, disclosure or distribution of this

Doniece Gott

From: Jackie Elliott <jElliott@denalifs.org>
Sent: Thursday, April 16, 2026 11:57 AM
To: Senate Finance Committee
Subject: Please Support Denali Family Services' Wonderland Project in the FY27 Capital Budget

Greetings Committee Members,

My name is **Jackie**, and I am a Behavioral Health Supervisor with Denali Family Services (DFS). I am writing to respectfully ask for your support in including DFS' *Wonderland Project* in the FY27 capital budget.

This project will fund the construction of a new outpatient behavioral health facility in Wasilla, expanding access to critical services for youth and families across the Mat-Su Valley and beyond. Currently, DFS is at capacity and has had to turn away youth in need due to limited space and staffing constraints.

The Wonderland Project will allow DFS to double in size and serve more than 150 youth annually, many of whom are experiencing complex behavioral health challenges. Without access to these services locally, youth are often placed outside of their communities or in more intensive and costly levels of care.

This investment is not only important for Mat-Su families—it is a statewide solution that helps reduce strain on Alaska's behavioral health system, lowers long-term costs, and keeps youth connected to their support networks.

I respectfully ask that you include the \$2.8 million CAPSIS request for the Wonderland Project in the FY27 capital budget.

Thank you for your time, your service to Alaska, and your commitment to supporting youth and families.

Sincerely,

Jacalyn Elliott

BHA Supervisor / Scheduler

SCBS Department

(907) 330-2495

(907) 727-0391 (cell phone)

1251 Muldoon Rd. Suite 103

Anchorage, AK 99504



Our Mission: To support the wellness of Alaska's youth and families through community-based behavioral health services.

Doniece Gott

From: Til Beetus <tilbeetus@gmail.com>
Sent: Thursday, April 16, 2026 1:15 PM
To: Senate Finance Committee
Cc: Erin Morotti
Subject: Please restore full funding for victims' services and the Violent Crimes Compensation Board

Dear Members of the Finance Committee,

I am writing to ask you to reject the cuts made by the Senate DPS Finance Subcommittee on April 15, 2026, and restore funding for the Council on Domestic Violence and Sexual Assault and the Violent Crimes Compensation Board to the full House-approved amounts.

This issue is deeply personal to me.

I am a former shelter resident. I once had to seek safety while my child's father was looking for me throughout Fairbanks with a loaded gun. I know what it feels like to need help immediately and to depend on victim services for safety and survival.

I am also a mother whose daughter was sexually assaulted while attending a Tanana Chiefs Conference culture camp. When TCC was notified, they first offered to help, but once it became clear they could be seen as liable, they denied my daughter the help she needed. I had to turn to the Violent Crimes Compensation Board so my daughter could get therapy somewhere safe and appropriate. Because of that support, she was able to receive care without having to go to therapy through the same organization that had negligently sponsored the camp.

That is why I am so alarmed and disappointed by the subcommittee's actions. It is not acceptable to reduce funding for programs that serve victims of domestic violence and sexual assault. These are not optional services. They are lifesaving services.

I also strongly oppose denying the fund source change for the Violent Crimes Compensation Board. State funds must be available now so victims of violent crime can continue to receive help and so federal funds will remain available as well.

When funding is reduced, victims pay the price. Families face longer waits, fewer services, less legal help, and more barriers to safety and healing. Survivors should not have to fight for counseling, shelter, advocacy, or compensation after already enduring violence and trauma.

Please reject these actions and restore CDVSA and VCCB funding to the full House-approved levels when the DPS finance subcommittee report comes before the full Finance Committee.

I urge you to remember that behind every budget line is a real person, often a woman or child, trying to survive and heal. I know, because I have lived it, and my daughter has too.

Thank you for your time and consideration.

Til Beetus



Virus-free. www.avg.com



April 22, 2026

Dear Members of the Senate Finance Committee,

On behalf of United Way of Anchorage, I urge you to restore the Homeless Assistance Program (HAP) to its FY26 funding level of \$10.15 million in both the mental health and capital budgets. The governor's proposed reduction to \$5 million would cut this program in half – and the negative consequences for Alaska families would be immediate, measurable, and lasting.

United Way of Anchorage has served this community for nearly 70 years as a convener and catalyst for systems-level change. Our work spans three interconnected impact areas: Financial Security, Healthy Community, and Youth Opportunity. Housing stability sits at the center of all three. When a family loses housing, everything else unravels – employment, health, children's education. Our work is built on that reality.

We operate Alaska 211, the statewide helpline that served as a critical resource for nearly 20 years. Alaskans made 30,858 requests for help last year – a 15% increase over 2024. Housing and shelter was the single largest category of need, representing 33% of all requests. That held true across every region of the state, from the Mat-Su Borough to Southeast Alaska to the communities of Nome and the Northwest Arctic. When Alaskans are in crisis, housing is what they are calling about. HAP is a core part of the system that answers that call.

Our own work reflects this urgency. In FY2025, United Way of Anchorage's eviction diversion efforts helped maintain housing stability for 302 Anchorage households. These are not abstract statistics. They are neighbors who are housed today because a coordinated system of funding and services was in place to help them – and who are far better positioned to maintain employment, care for their families, and contribute to our community as a result.

Across Alaska, HAP supports 34 organizations providing emergency shelter, rapid rehousing, and eviction prevention. In Anchorage, that includes AWAIC, the Salvation Army, Catholic Social Services, and Covenant House. In rural communities, HAP-funded domestic violence shelters may be the only shelter available. A 50% cut does not scale these programs down – it eliminates them. Organizations already operating on thin margins cannot absorb a cut of this magnitude and continue to function.

We ask the Senate Finance Committee to pass SB 215 with HAP funding fully restored to \$10.15 million – \$9.2 million in general funds combined with \$950,000 from the Alaska Mental Health Trust Authority, the same level as FY26. The same applies to the capital budget companion, SB 214.

The data from our own work – from 211 calls, from families kept housed, from individuals rebuilding stability – tells a consistent story: housing is the foundation. When it holds, people can move forward. When it doesn't, the costs to the state are far greater than the investment we're asking you to protect. Please restore this funding.

Thank you for your consideration and your service to Alaska.

Sincerely,



Eric Billingsley

President & CEO

United Way of Anchorage