

Senate Finance Subcommittee

Department of Transportation & Public Facilities
Highways, State Equipment Fleet

Dom Pannone, Director
Program Management & Administration

Brad Bylsma, Statewide Fleet Manager
Statewide Equipment Fleet

Jason Sakalaskas
Maintenance & Operations Chief
Northern Region

April 1, 2026



KEEP ALASKA MOVING

FY2027: Highways

Leg. Finance Subcomm. Book Item #6 , #7, #8

	UGF	DGF	FED	OTHER	TOTAL
Central Highways and Aviation	\$ 2,064.0				\$ 2,064.0
Southcoast Highways and Aviation	\$ 837.0				\$ 837.0
Northern Highways and Aviation	\$ 2,345.9				\$ 2,345.9
Restore Funding for Highways and Aviation Maintenance	\$ 5,246.9				\$ 5,246.9
Central Region Highways and Aviation	\$ 1,423.1				\$ 1,423.1
Restore One-time Fund Swap for Derelict Vessel Prevention Pgm. Fund	\$ 1,423.1				\$ 1,423.1
Northern Highways and Aviation	\$ 1,253.9				\$ 1,253.9
Restore One-time Fund Swap for Alaska Housing Capital Corporation	\$ 1,253.9				\$ 1,253.9

Excerpt from FY2017 Leg. Finance Conference Committee Book, "Legislative Additions & Deletions"

12	Highways, Aviation, and Facilities/ Central, Northern and Southcoast Region Highways and Aviation	20% State Equipment Fleet Replacement Rate Reduction	(\$2,525.6) UGF	In discussions with DOT&PF during the subcommittee process, it was determined that extending the life cycle of vehicles in the State Equipment Fleet could reduce replacement rates by 20%, thereby reducing the UGF budget (DOT&PF is the #1 consumer of the State Equipment Fleet). Decrements were included in the three regions totaling \$2.5 million UGF to implement the rate reduction.
----	--	--	-----------------	---

Excerpt from FY2018 Leg. Finance Conference Committee Book , "Legislative Additions & Deletions"

9	Highways, Aviation, and Facilities/ Central and Northern Highways and Aviation	Equipment Life Extensions	(\$1,064.0) UGF	In discussions with DOT&PF during the subcommittee process, it was determined that further extending the life cycle of vehicles in the State Equipment Fleet could reduce replacement rates by another 20%, thereby reducing the UGF budget (DOT&PF is the #1 consumer of the State Equipment Fleet). Decrements were included in Central and Northern regions totaling \$1.1 million UGF to implement the rate reduction.
10	Highways, Aviation	Rural Airports After Hours	(\$350.0) UGF	Decrements are made to personal services in the three regional Highways and Aviation



FY2027: Highways

Leg. Finance Subcomm. Book Item #5

	UGF	DGF	FED	OTHER	TOTAL
New Component: Stwd Guardrail & Roadside Repair		\$ 1,768.9			\$ 1,768.9
Statewide Guardrail and Roadside Hardware Repair		\$ 1,768.9			\$ 1,768.9
New Component: Statewide Wayside Maintenance		\$ 420.0			\$ 420.0
Statewide Wayside Maintenance		\$ 420.0			\$ 420.0

- Adds a single component to focus and support guardrail repairs. When damaged, guardrails no longer provide the intended protection and can even become hazards themselves. It is crucial to keep these systems in good repair and promptly address any damage
- Adds a single flexible component to support vegetation clearing, refuse management, sanitary services, snow removal, and facility repairs at high-use and safety-critical waysides across Alaska

<p>DOR Fall 2025 Revenue Motor Fuel Tax Forecast: \$42.4M FY2027 Governor DOT&PF Motor Fuel Tax Total: \$39.8M</p>

(\$ in thousands, unless otherwise noted)



2025/26 Emergency Responses Continue to Challenge

FLOODING

January 14–15 Anchor Point Road flooding

June 14–15 Anchor Point Road flooding

June 21–26 Matanuska flooding at Old Glenn Highway & Maud Road - first breach of earthen dam

June 26–27 Matanuska flooding at Old Glenn Highway & Maud Road - second breach of earthen dam

August 8 Mendenhall River Glacial Lake Outburst Flood (GLOF), Juneau

August 26 Second Dalton Highway overtopping event:

- Milepost 112–156 closed in the morning
- MP 112–142 reopened at 4:30 pm
- MP 142–230 open with traffic control at 7:30 pm
- MP 142–144, MP 142–250, Dalton District flooding

August 26 Northern Region-wide flooding

- Parks Highway MP 239–243: Nenana Canyon River erosion
- Wiseman Airport impacts
- Eureka Road to Rampart Road damage
- Tofty Road impacts
- Nolan Road / Wiseman Road washout
- Kougarak Road MP 79.5–80: multiple erosion repairs
- Copper River Highway MP 2.4: water over roadway
- Abercrombie Creek flooding: 500' berm installed

August 28 Kobuk flooding

August 28 Allakaket flooding

August 31 Allakaket flooding damages: public facilities, roads, utilities

WASHOUTS

June 14 First Dalton Highway washout

- MP 305–356 closed at 6:25 am

• June 18 MP 305–356 reopened at 12:00 pm

August 28 Whiskey Gulch Road washout (Kenai Peninsula)

August 29 Petersville Road washout

September 13 Dalton Highway MP 110–112 “Beaver Slide” washout

AVALANCHES

January 24–February 2 Parks Highway MP 219 avalanche closure

January 24–February 4 Hatcher Pass avalanches

October 8 Dalton Highway avalanche, north side of Atigun Pass

December 3 Richardson Highway MP 209.5 avalanche impacting NR lane and half of SB lane; cleared following day

December 7 Klondike Highway closed due to small avalanche at MP 14.3

December 30 Thane Road, Juneau - closed at avalanche gate due to high avalanche hazard

LANDSLIDES

March 21–April 19 Tongass Highway Wolfe Point landslide

May 14 Skagway rockslide 2.8-mile Dyea Road

September 20 Taylor Highway landslide at MP 115

STORMS

October 8 Alaska West Coast Storm – remnants of Typhoon Halong hit northern West Coast, Norton Sound

October 12 Alaska West Coast Storm – remnants of Typhoon Halong, second storm hit Kuskokwim Sound and Yukon Kuskokwim Delta

December 7 Heavy snowfall begins in Juneau area; continues throughout the month

December 13 Atigun Pass and MP 325 winter storm, Dalton Highway closed at Atigun Pass and MP 242-245 due to blizzard like conditions and stuck tanker; Atigun Pass undergoing avalanche mitigation control; reopened later in the afternoon

December 27 Dutch Harbor Airport closed due to storm and wave action that deposited rocks onto the runway

December 28 Klondike Highway closed at 7:30am - blizzard

December 28 SE District Hoonah and SE District Gustavus airport closures due to heavy snow

January 9 NR Severe Winter Storm impacting Richardson Highway resulting in various roadway closures from Valdez to Delta

February 22 NR Severe winter snowstorm impacting Fairbanks area resulting in multi-day state office closures along with closure of the Steese, Elliott, and Dalton Highway

OTHER EMERGENCIES

January 12 Rabbit Creek Pedestrian Bridge partial collapse

February 7 Missing aircraft in Western Alaska – DOT&PF aided with Search and Rescue

March 14–31 Sinkhole on Cohoe Loop Road

April 28 Fatal aircraft accident at Nanwalek Airport

June 19–July 15 Interior fires begin (Nenana Ridge Complex)

July 25 Bridge hit by overheight load; limited lane closure on New Seward Highway

August 30 Dalton Highway MP 142–230 full restoration completed

October 11 Dalton Highway MP 97.5 closure (Finger Mountain) due to fuel tanker blockage; reopened after a few hours following M&O work

October 30 Klondike Road Closure; severe winter weather, reopened Oct 31

Highways & Aviation Equipment Operator Vacancy

Maintenance District	Equipment Operator Positions	Vacancy Rate as of Jan. 16, 2025	Vacancy Rate as of Jan. 21, 2026
Anchorage	46	2	2
Dalton	63	14	2
Denali	22	4	2
Fairbanks	54	6	6
Kodiak	32	3	3
Matanuska-Susitna	34	1	1
Peninsula	46	5	6
Southeast	54	3	3
Southwest	19	1	2
Tazlina	35	1	1
Tok	34	11	10
Valdez	26	8	8
Western	30	6	7

Winter Maintenance Contract Support

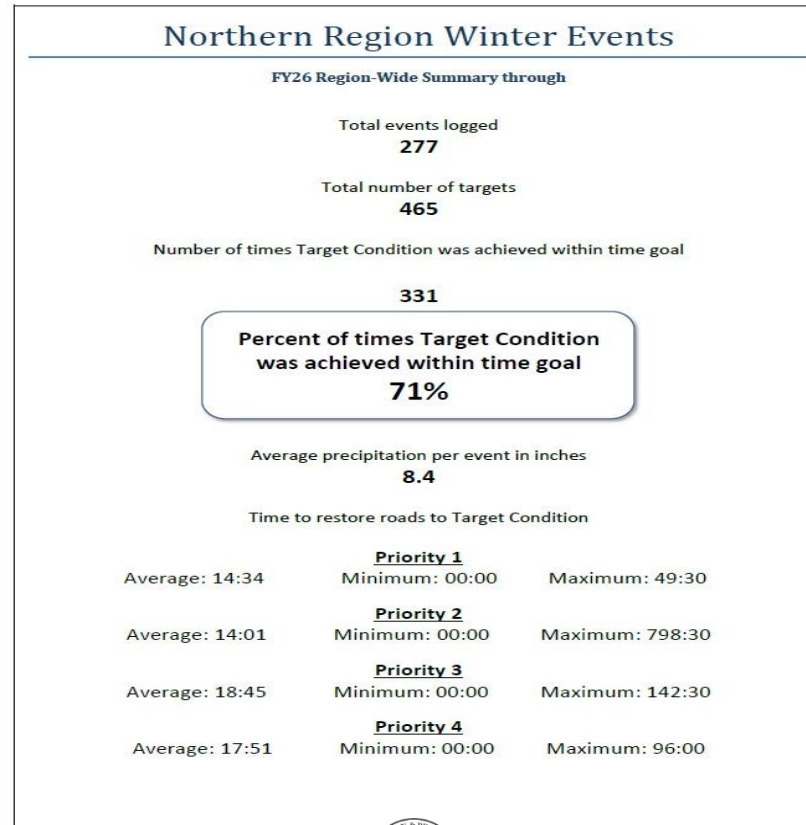
Fiscal Year	Region	Total Expended	Description
FY2023	Northern	\$257,968	Priority 3 & 4 Roadway
FY2024	Northern	\$170,000	Priority 3 & 4 Roadway
FY2025	Northern	\$292,999	Priority 3 & 4 Roadway
	Central	\$548,000	Priority 3 & 4 Roadways & Sidewalks
	South Coast	\$9,160	Priority 3 & 4 Roadway
FY2026	Northern	Ongoing	Priority 3 & 4 Roadways & Sidewalks
	Central		Priority 3 & 4 Roadways & Sidewalks
	South Coast		Priority 3 & 4 Roadways & Sidewalks

Supporting Response to Severe Winter Weather Events
 Focused Priority 3 & 4 Roadways and Sidewalks



Winter Storm Response Performance Results

Region	Total Events Logged	Total Number of Targets	Number of time Target Condition was Achieved within time goal	Percentage of time Target Condition achieved	Notes
Northern	277	465	331	71%	Data Current through February 2026
Central	173	353	260	74%	Data Current through February 2026
Southcoast	69	131	113	86%	Data Current through December 2025



Dalton Highway – Strategic Backbone

The Dalton Highway is Alaska's energy corridor — connecting the state's interior, pipeline infrastructure, and Arctic resources to the national network.



Highway	Total Highway Miles	Asphalt Miles	Gravel Miles
Dalton	414	159	255

Operational Realities

- 1,000-mile round trip from Fairbanks to Prudhoe Bay
- Heavy maintenance demand: gravel, aggregate, and waysides
- Revoking Public Land Order 5150 ensures long-term access to material sites and staging areas
- Harsh conditions require constant investment to maintain reliability

Investment in Corridor Resilience

- Capital Investment 2015-2025: \$465.6M
- Planned 2026-2031: \$454M
- Total (2015-2031): ~\$920M

Northern Region Project Highlight: Dalton Highway Investment

2015-2025: \$465M

2026-2031: \$454M

Average investment of \$45M/Year

Since 2015

- **132 miles rehabilitated or reconstructed**
- **95 miles resurfaced**
- **4 bridges replaced**

Dalton Highway Summer 2026 Maintenance Plans

- Routine calcium application Dalton Highway MP 0-415, Elliott Highway MP 73-150
- Asphalt repairs Elliott Highway MP 28-73, Dalton Highway MP 37-50, Dalton Highway MP 175-209, Dalton Highway MP 362-415 (attempt)
- Highfloat Dalton Highway MP 338-345
- Highfloat patching Dalton Highway MP 90-175
- Surface course aggregate placement Dalton Highway MP 50-67
- Surface course aggregate placement Dalton Highway MP 224-239
- Surface course aggregate placement Dalton Highway MP 320-325
- Surface course aggregate placement Dalton Highway MP 345-356
- Surface course aggregate placement Dalton Highway MP 0-9

Dalton Highway Challenges

Dalton Highway Closures – Stranded vehicles and Accidents

Severe Winter Events

Resource Availability – Staffing and Equipment



FY2027: Equipment Fleet

Items not noted in Leg. Finance Subcomm. Book

	UGF	DGF	FED	OTHER	TOTAL
State Equipment Fleet				\$ 500.0	\$ 500.0
Statewide Mechanic Contracting Support				\$ 500.0	\$ 500.0

Contracting authority used if the significant vacancies persist. DOT&PF would solicit for multiple vendors to accomplish maintenance in rural and remote areas, or a single contract to coordinate and subcontract location specific services.

Equipment Mechanic Staffing

Maintenance District	Heavy Equipment Mechanic Positions	Vacancy Rate <i>(as of February 3, 2025)</i>	Vacancy Rate <i>(as of March 27, 2026)</i>
Anchorage	10	50%	30%
Dalton	13	23%	8%
Denali	4	25%	25%
Fairbanks	11	55%	64%
Kenai Peninsula	9	22%	0%
Kodiak/Aleutian	5	20%	40%
Matanuska-Susitna	7	0%	0%
Southeast	12	50%	58%
Southwest	5	40%	0%
Tazlina	6	50%	16%
Tok	8	0%	25%
Valdez	5	40%	25%
Western	8	50%	50%
Total/Average	103	33%	28%



State Equipment Fleet (SEF) by the numbers

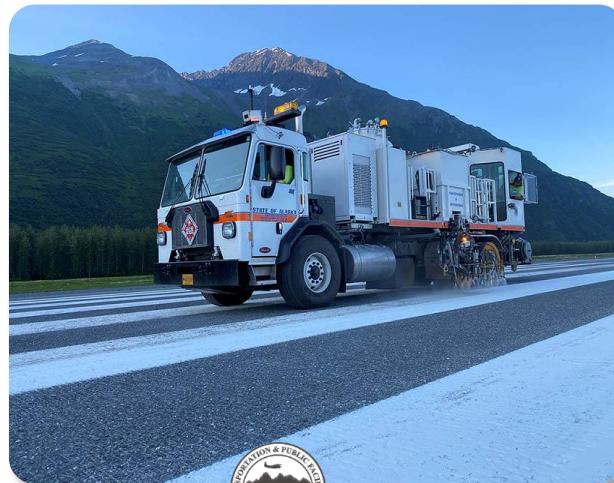
Total Active Fleet: 7,659 Assets (includes University of Alaska, Alaska Housing Finance Corp., Alaska Energy Authority)

**Highway Equipment Working Capital Fund:
5,541 Assets**

Replaceable Assets: 3,600 (all agencies)

FY2027 Replacement Cost: \$420 million

FY2027 Capital Request: \$40 million



SEF Typhoon Halong Recovery Contributions

Anchorage and Bethel based support:
procurement, packaging, shipment of supplies
and equipment

Leverage procurement authority, contracting
officers, vendor relationships, access to P-cards,
access to vehicles for transport



Thank You.

Dom Pannone, Director
Program Management & Administration

Brad Bylsma, Statewide Fleet Manager
Statewide Equipment Fleet

Jason Sakalaskas, Maintenance & Operations Chief
Northern Region

Alaska Department of Transportation & Public Facilities

DOT.Commissioner@alaska.gov

Alaska 511: 511.alaska.gov



KEEP ALASKA MOVING