

The State gave the University of Alaska a mission...



UNIVERSITY
of ALASKA

Sec. 14.40.117. Establishment of Alaska Native Language Center.

The University of Alaska shall establish an Alaska Native Language Center, the purposes of which are to

(1) study languages native to Alaska;

(2) develop literacy materials;

(3) assist in the translation of important documents;

(4) provide for the development and dissemination of Alaska Native literature;

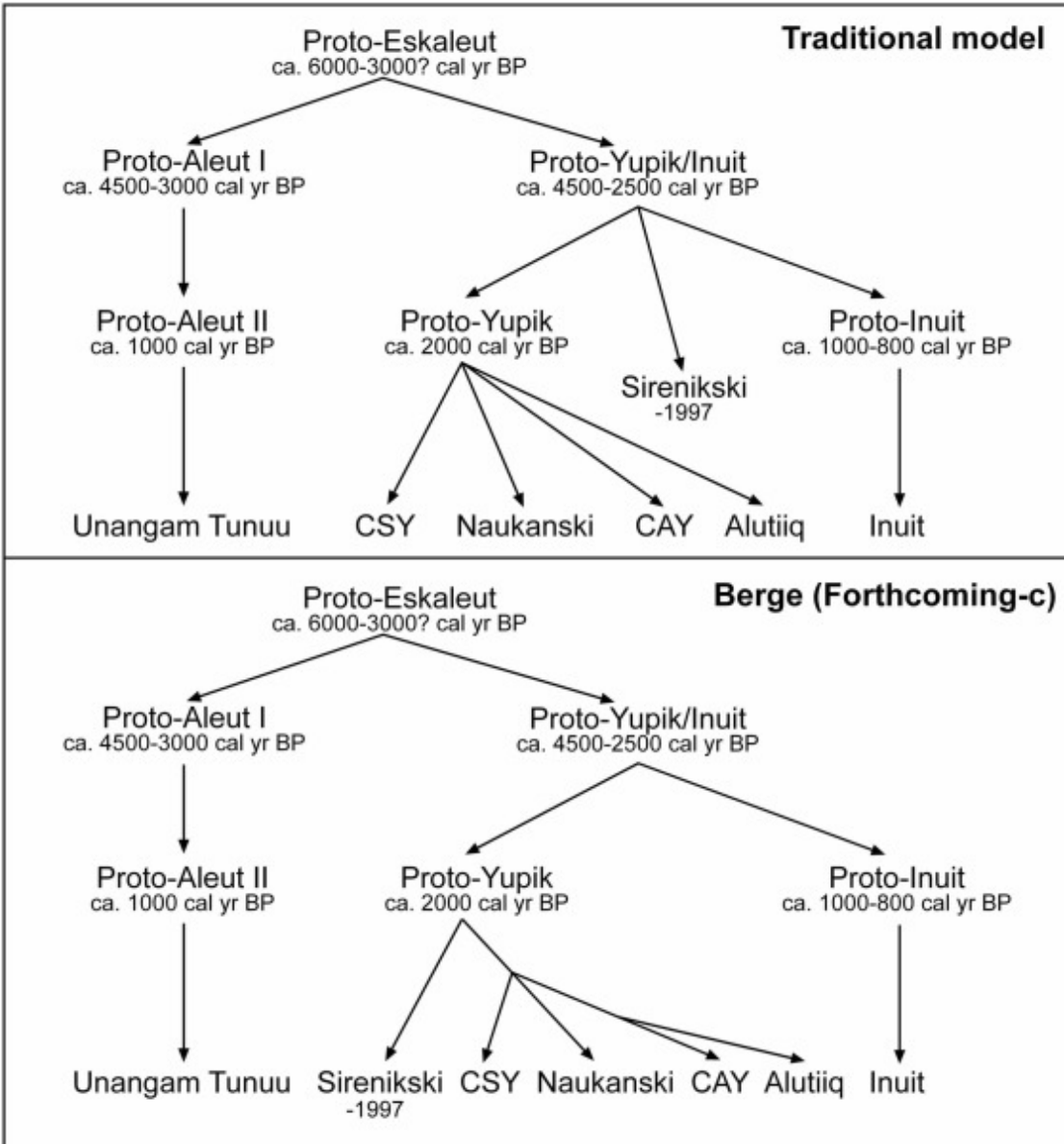
and

(5) train Alaska Native language speakers to work as teachers and aides in bilingual classrooms.

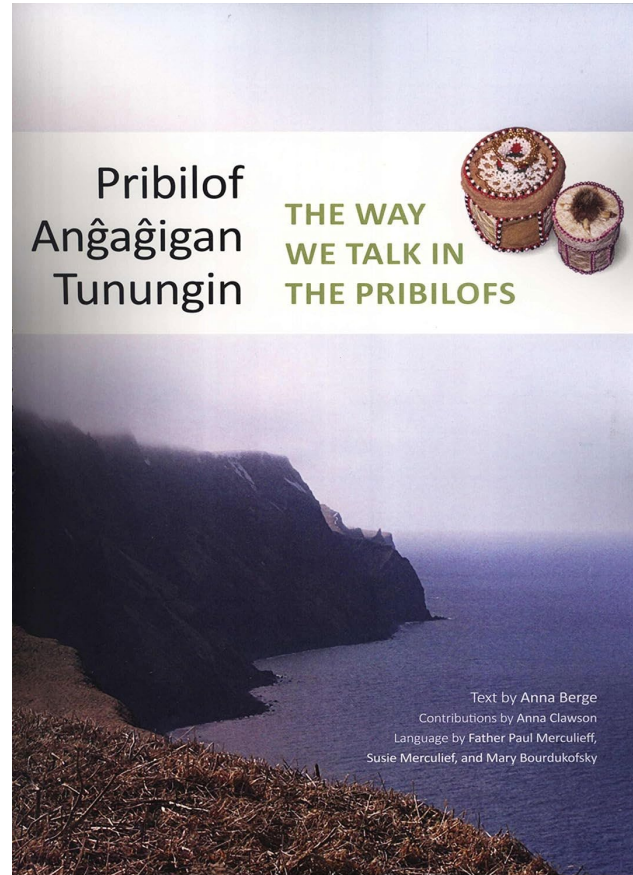
The Development of ANLC over 54 Years



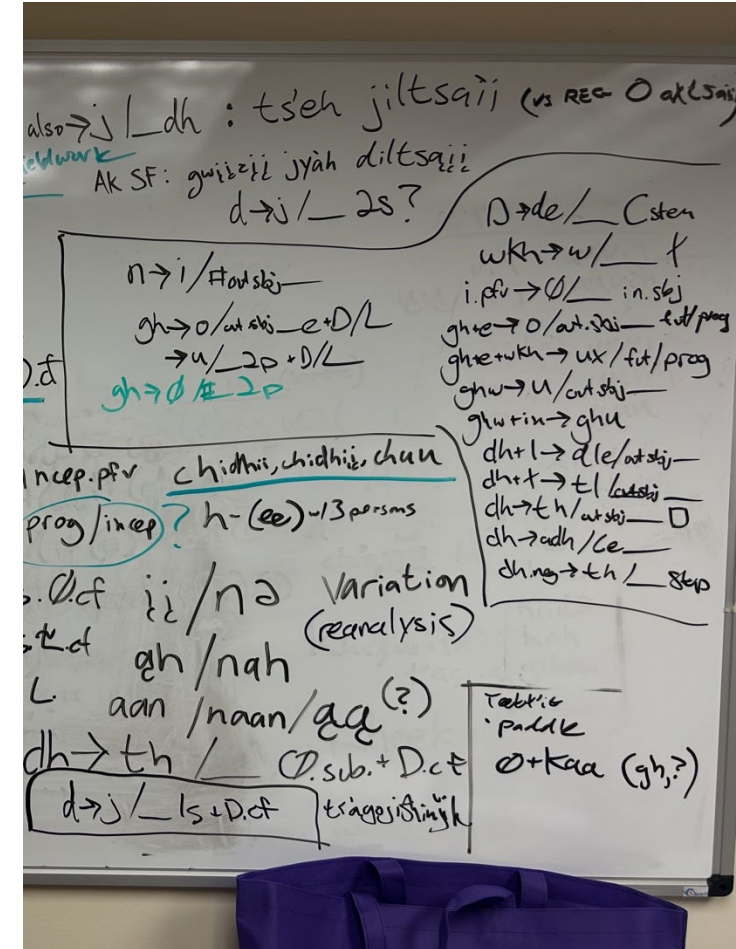
Alaska Native Language Research



Finding Language Relationships



Curriculum Development



Fieldwork Data Collection

ANLC Research through Language Documentation: Essential, Collaborative, Enduring



Alaska Native Language Program (ANLP)

MAY 18 - AUG 7, 2026

ANL F141X:
Beginning Dené / Athabascan I
Lower Tanana

CRN: 51574

5 credits



2:00 pm - 3:15 pm
Monday-Thursday

ANL F142X:
Beginning Dené / Athabascan II
Lower Tanana

CRN: 51575

5 credits



3:30 pm - 4:45 pm
Monday-Thursday

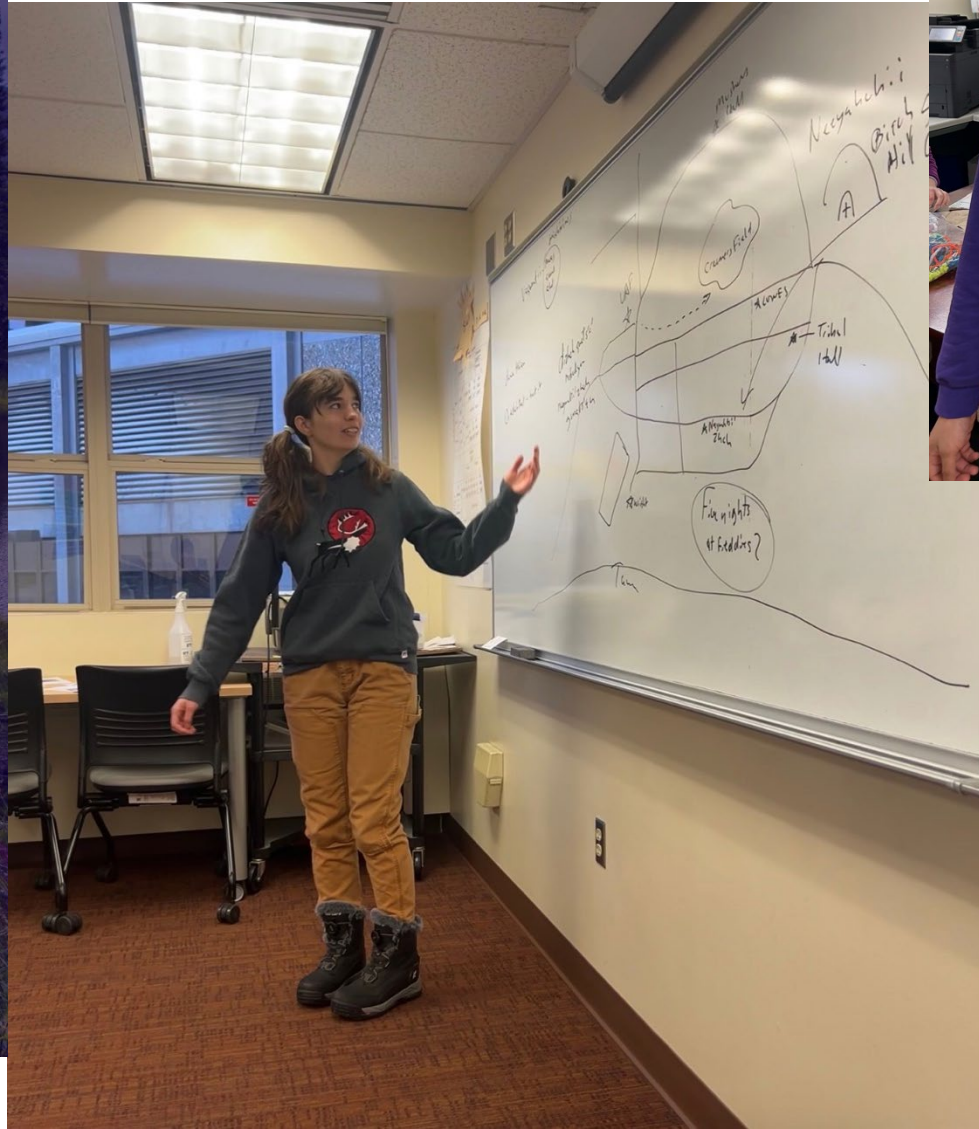
ANL F241:
Intermediate Dené / Athabascan I
Lower Tanana

CRN: 51576

3 credits



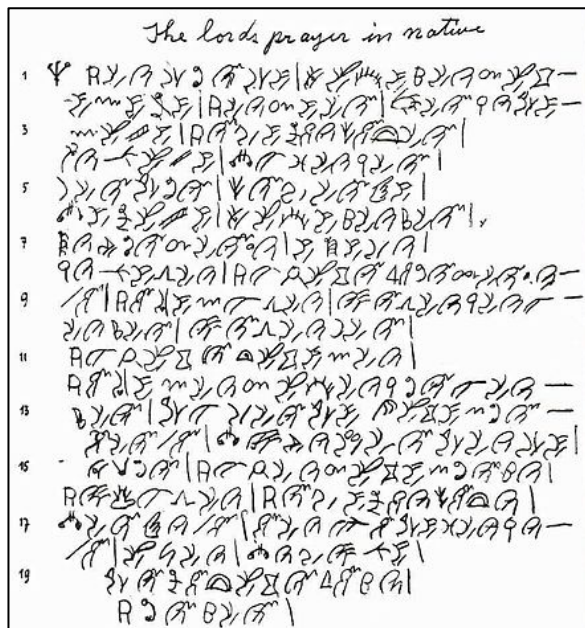
5:45 pm - 6:45 pm
Monday-Wednesday



Alaska Native Language Archive (ANLA)



From personal collection to professional archive



*Rare documents and recordings
Uyaquq (Helper Neck)
Yup'ik orthography (19th c);
Cassettes of ANL (20th c)*

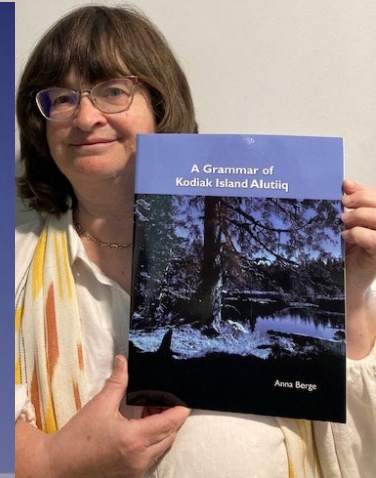
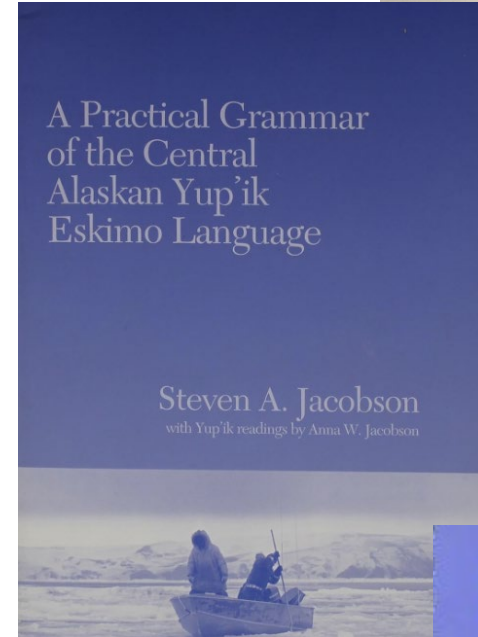
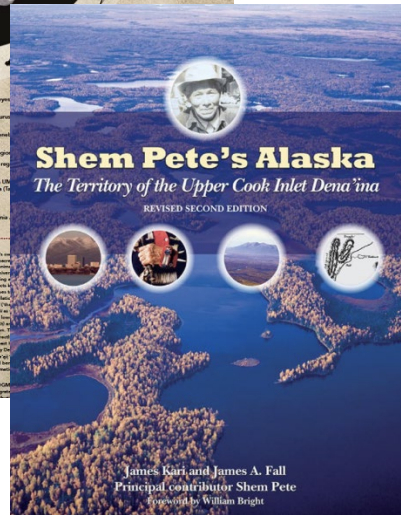
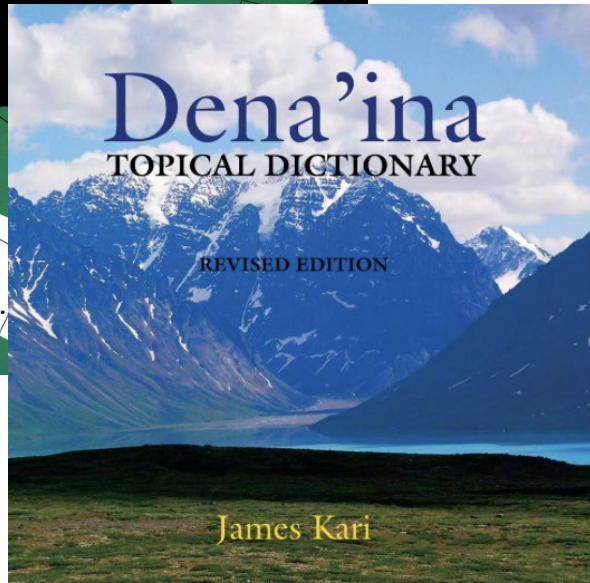
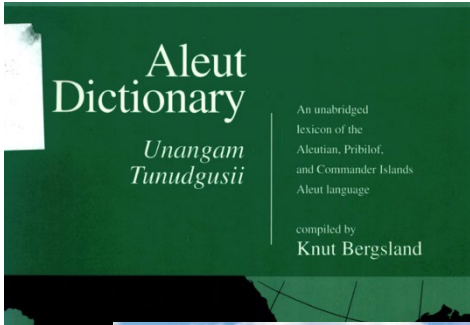


*Community &
Public Access*



Alaska Native Language Publications

Dictionaries Grammars



Texts and materials for all ages



Culture

Where we are currently headed



Sec. 14.40.117. Establishment of Alaska Native Language Center.

The University of Alaska shall establish an Alaska Native Language Center, the purposes of which are to

~~(1) study languages native to Alaska;~~

~~(2) develop literacy materials;~~

~~(3) assist in the translation of important documents;~~

~~(4) provide for the development and dissemination of Alaska Native literature;~~

and

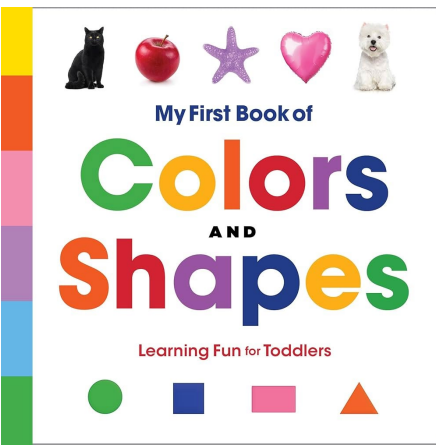
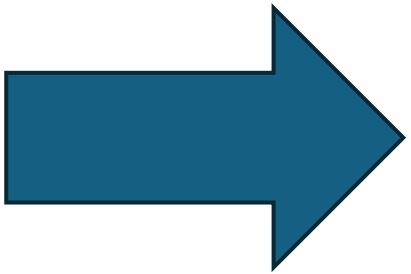
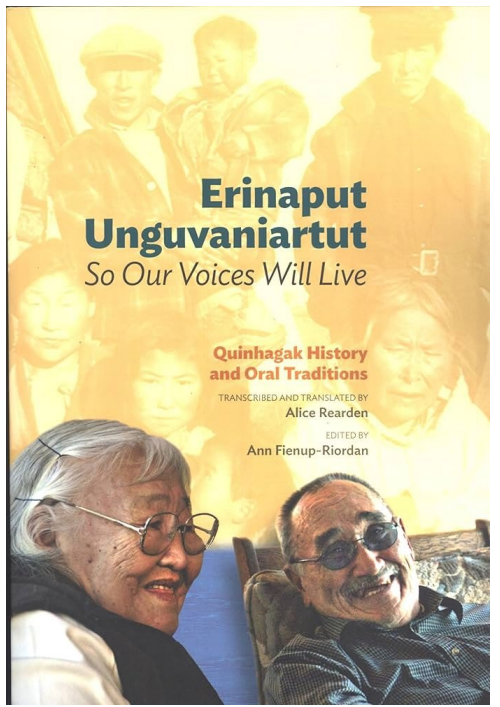
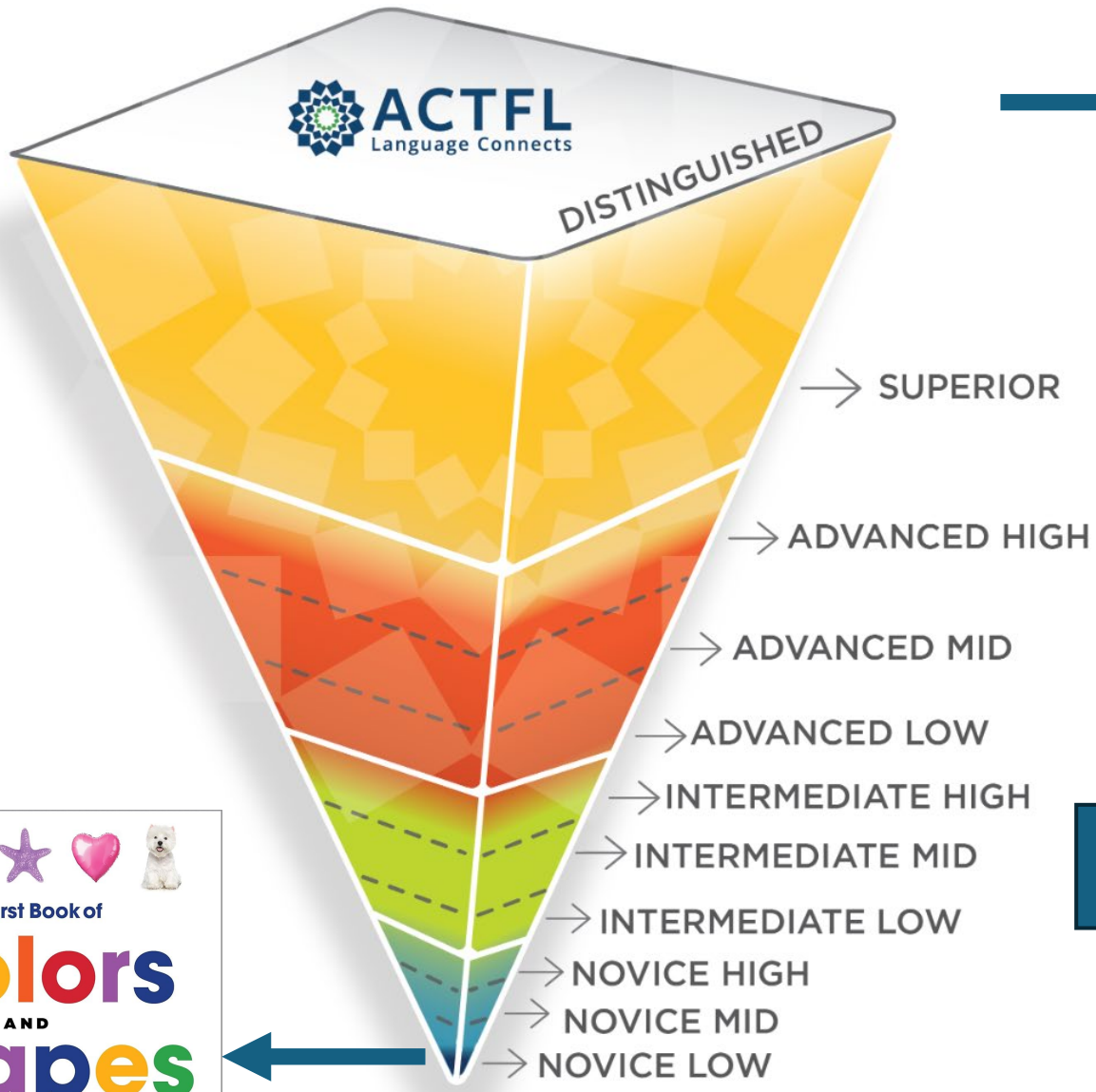
~~(5) train Alaska Native language speakers to work as teachers and aides in bilingual classrooms.~~

CIS Reductions in ANLC staffing and status

Position	2013	Present
Director Iñupiaq Linguistics	Professor	Vacant
Policy, Education	Associate Professor	Vacant
Yup'ik Language	Associate Professor Associate Professor Instructor	Student (Adjunct) Associate Professor Vacant
Iñupiaq Language	Instructor	Assistant Professor
Gwich'in Language	Instructor	Term Assistant Professor (Non-retained)
Other Dene Language	Visiting consultants	Term Instructor, Upper Tanana, Adjunct Lower Tanana
Dene Linguistics	Associate Professor Associate Professor	Term Staff (Position in danger) Vacant
Inuit-Yupik-Unangax̂ Linguistics	Associate Professor	Professor (Position threatened)
Administrative Assistant	Staff	Vacant
Editor	Staff	Term Staff (Position in danger)
Archive	Vacant	Term Staff (Position in danger)

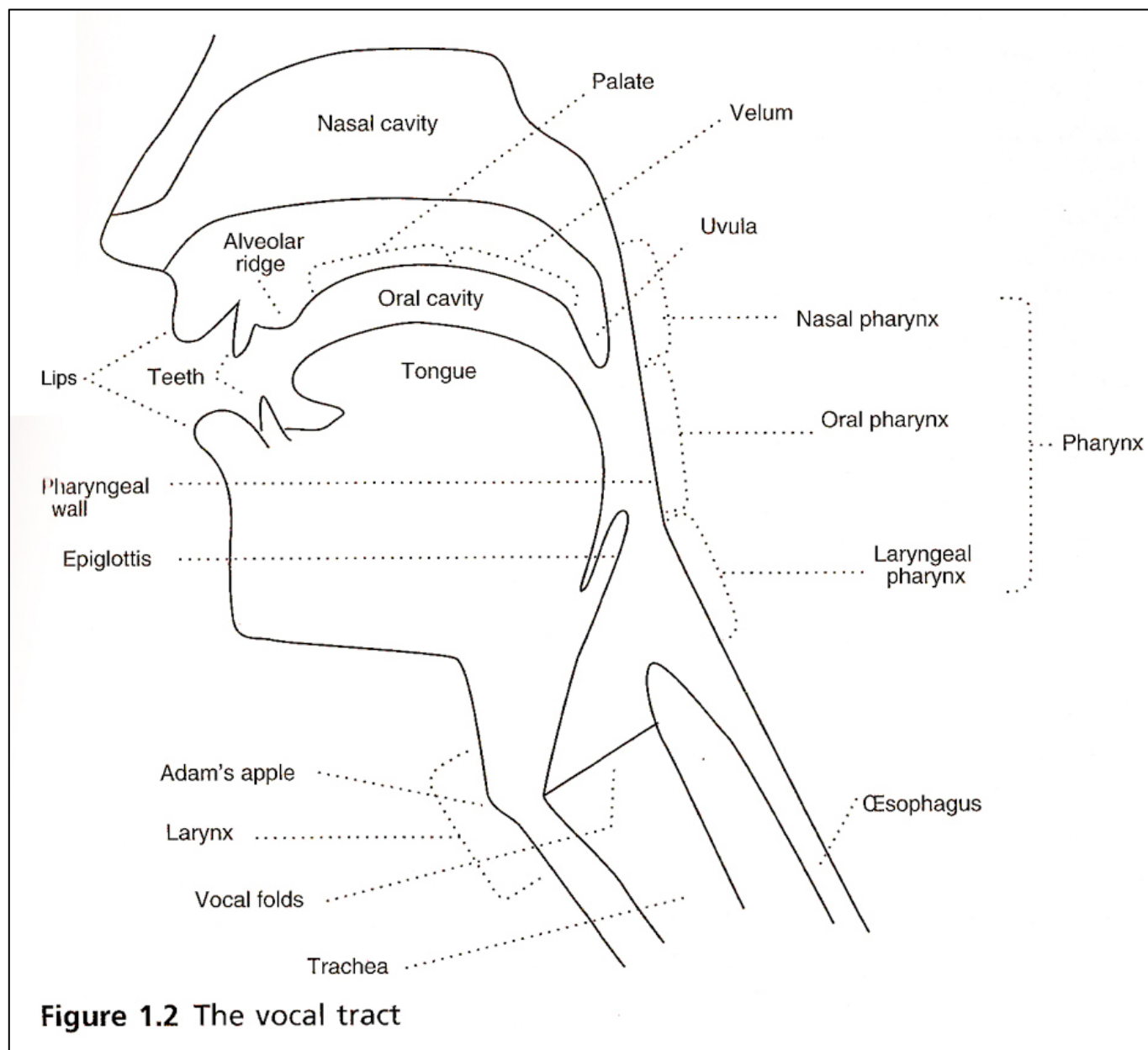
ANLC's Issues are UAF / CIS Budget Issues: Comparing ANLC Losses and CIS Admin Gains

Year	ANLC Position	ANLC Term/Temp	Upper Admin	Admin / Assistant
2021	- Editor [- Director auth.]	+ Term Editor (split) + Term Archive Mgr (split)		
2022				
2023	-Director	+ Term Instructor	+ Vice Chancellor RCNE + Assoc. Vice Chancellor RCNE	+ Admin Assistant
2024		+ Temp Instructor	+ Assoc. Vice Chancellor RWE	+ Lead Program Coordinator + Senior Director Alaska Native Success Partnerships
2025	- Yup'ik Faculty			- HR Coordinator + HR Coordinator + Executive Assistant to Dean + Graduate Success Coordinator + Undergraduate Advisor
2026		+ Yup'ik Student Adjunct - Gwich'in Term faculty - Term Research staff - Term Editor		+ Admin Assistant



ʔ vs Th

Ch' vs Tr'



Gwich'in Verb Complex

Disjunct Zone								#	Conjunct Zone																Stem								
									Pronominal Zone						Qualifier Zone						Conjugation Zone <small>TAM/Sub/Transitivity</small>					root+suffix							
3rd pl	pp object	schwa PP <small>(null PP)</small>	deriv-them-PP-ADV	ITERative	DIStributive	verbal/oral	INCorporate	#	disjunct boundary	object + y	direct object	indefinite	1st plural subject	3rd pl subject	areal trans -sem <small>(situation asp)</small>	conative <small>(post-asp)</small>	h-ye qualifiers	h	inceptive <small>(post-asp)</small>	qualifier	qualifier	dh-qualifier	dh mode <small>(viewpoint asp)</small>	mode <small>(viewpoint asp)</small>	perfective <small>(viewpoint asp)</small>		subject	classifier	voice/valence				
																										gə					və yə shə nə dii(n) na- khwə gə goo(v) gwə ch'ə ədə nih	ə	tr'ə khà chi tee chee ts'à zhi kee k'it ee lee nà dzaa...

Jidii? = What? Jùu? =Who? Jaghail? = Why? Chan T'iinyaa! = Say it again!

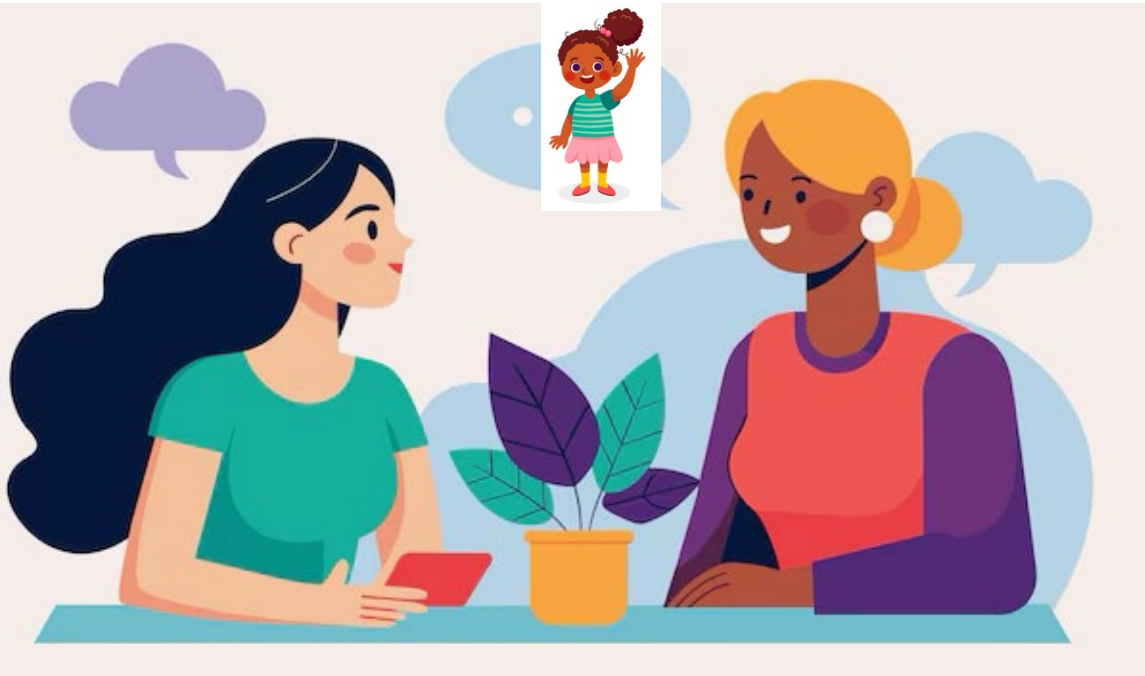
Mary natsal dai' **geegwa**andak.

Mary | she is small | when | she tells about it

geegwaldak = *I tell about it*

geegwandak = *you tell about it*

geegwaaandak = *S/he tells about it*



Dàqch'yaa? = How many?

Nijin? = Where?

Nats'ahts'a' X gwinyaa? = How do we say X?

***What we need to meet the mission
the State of Alaska has given us:***



Independence

We need to be assessed based on our mission, the only place within the University to do that is under the Vice-Chancellor of Research.

Director

The ANLC is a Center, and its varied and specialized mission requires leadership whose sole focus is meeting that mission.

Hard funding

The ebbs and flows of grant money are not reliable enough to sustain the long standing work of the ANLC. The State of Alaska provides the UA system with enough money to support the ANLC, but that funding is not being directed to us.

Alaska Native Language Center - Future Directions

New Linguistic Research

Documenting and describing complex language use with new technologies and tools

Second Language Acquisition

Building new teachers and materials for all levels

Language Revitalization

Building new fluent speakers, communities of speakers, and contexts of language use

