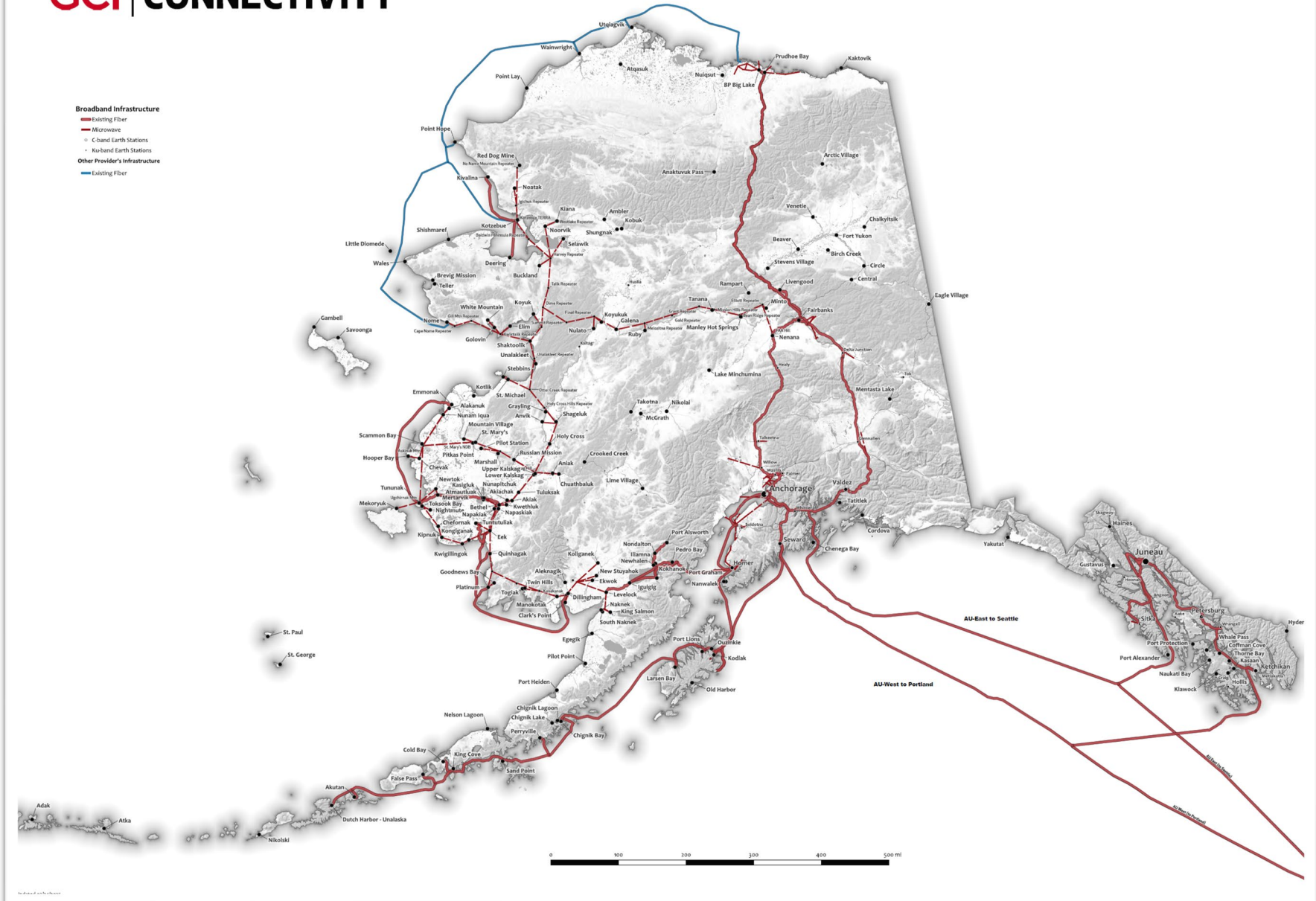




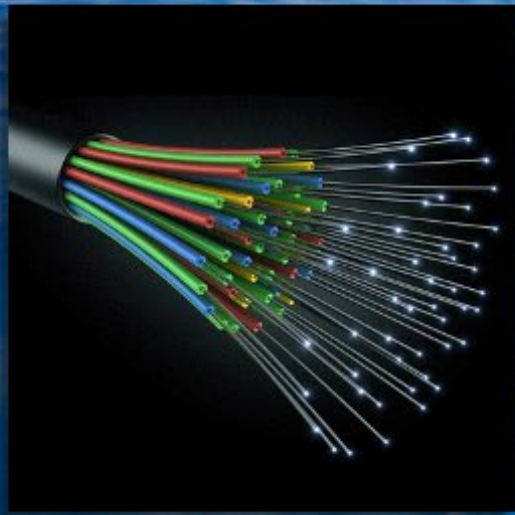
**GCI: Serving
Alaskans for more
than 40 years.**

- 1,800+ employees.
- \$4.7+ billion invested.
- Wireless, internet, enterprise services
- Serving more than 240 communities statewide.

GCI Investing across Alaska



Middle mile — the toolkit



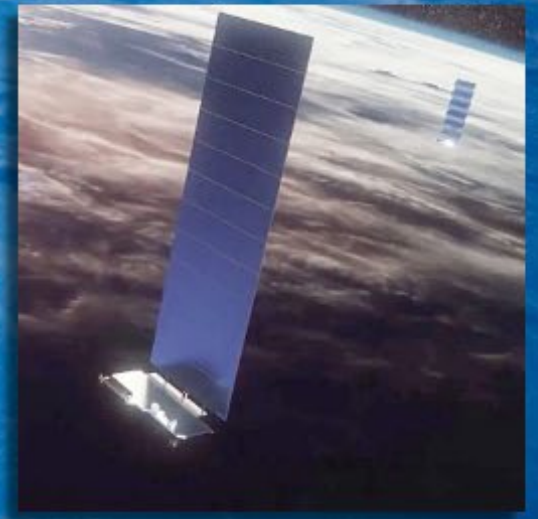
FIBER



MICROWAVE



GEO SATELLITE



LEO SATELLITE

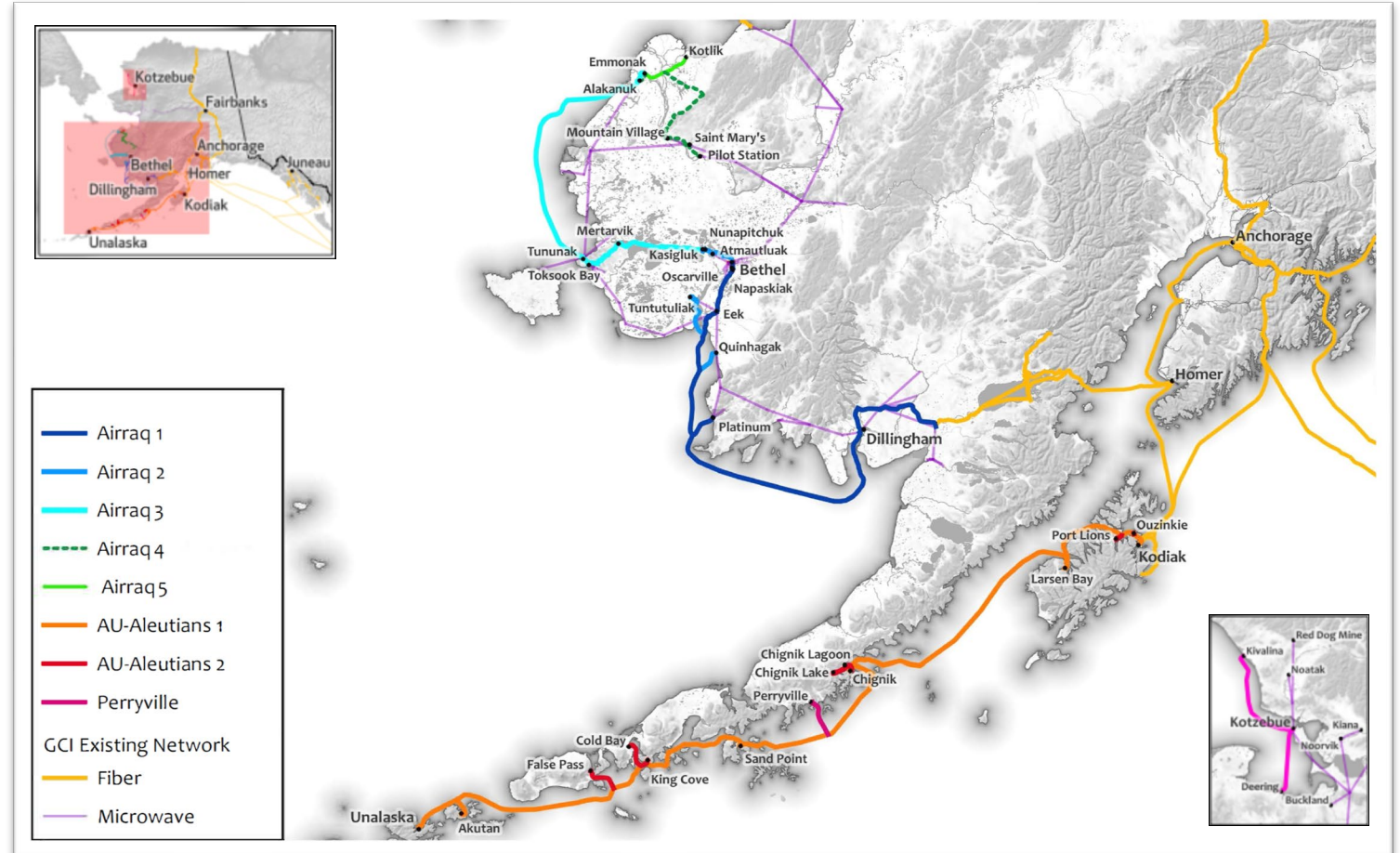
AIRRAQ: Closing the digital divide in the YK-Delta

AIRRAQ Summary

Tribal partners: Bethel Native Corporation

Federal partners: RUS, NTIA

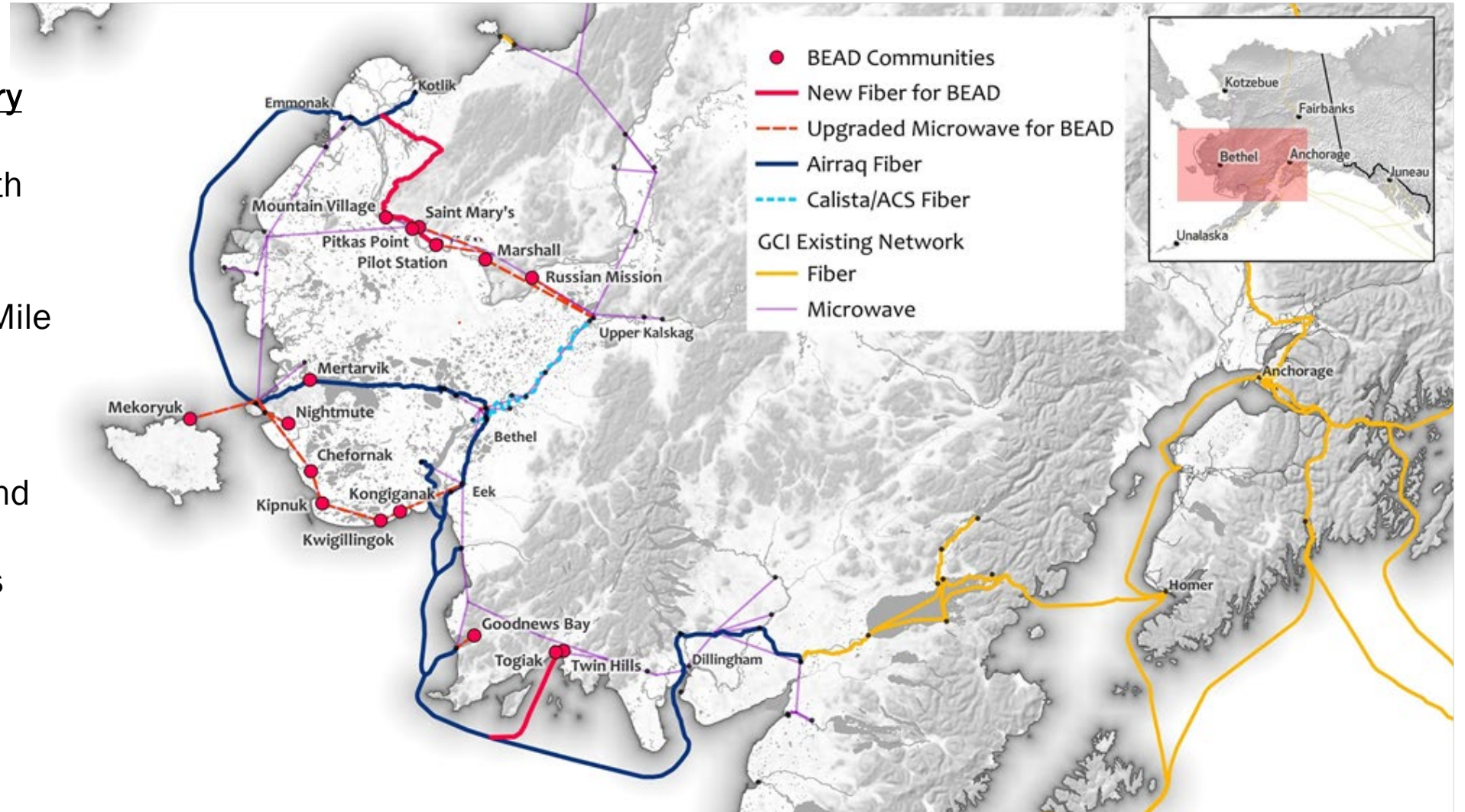
- 14 Y-K Delta communities to be served with 14,000 residents.
- 800-mile+ in middle mile fiber builds and FTTx last mile networks.
- Same consumer broadband plans offered in Anchorage.
- Supporting wireless upgrades.



AIRRAQ Expansion: BEAD Overview

AIRRAQ BEAD Summary

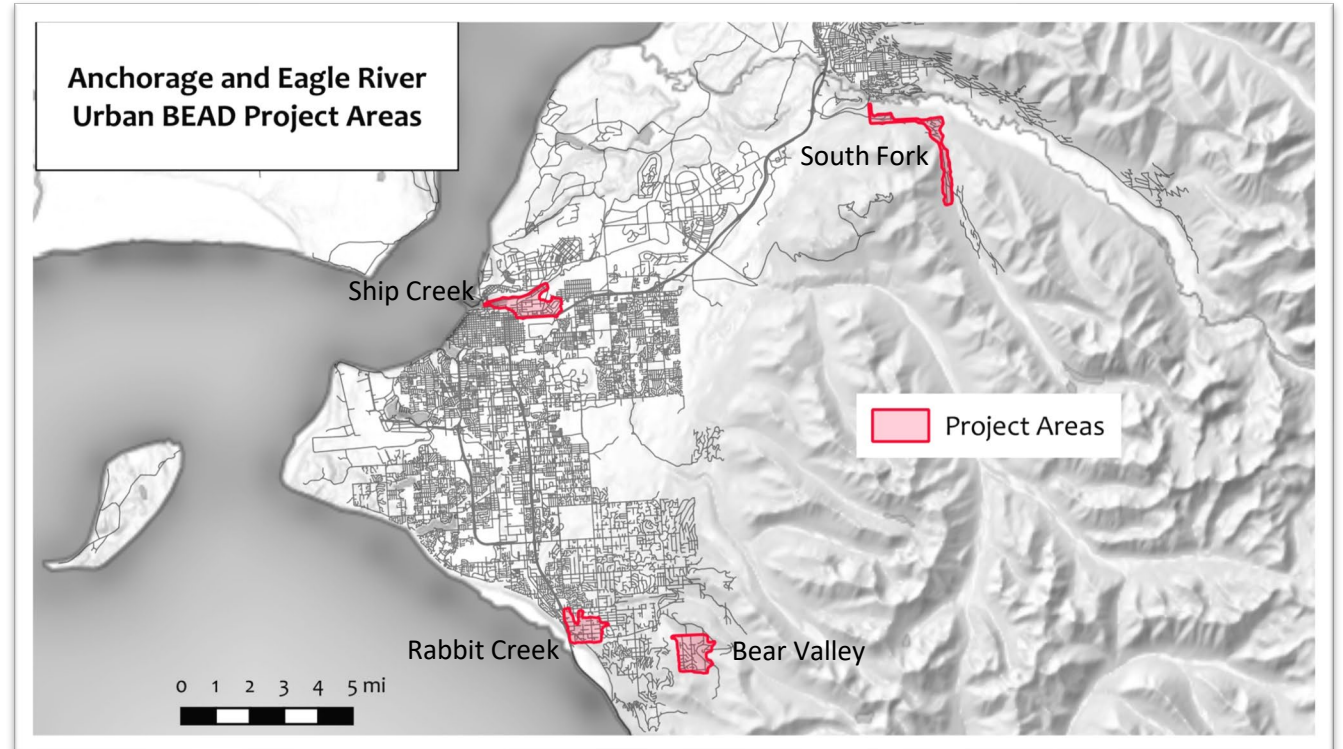
- \$115,435,432
- 16 communities with 2,328 BSLs
- Hybrid Fiber / Microwave Middle-Mile
- Fiber to home local access
- Gigabit speed consumer broadband plans
- Supporting wireless upgrades



Anchorage upgrades: BEAD Overview

URBAN BEAD Summary

- Serving: Ship Creek, Rabbit Creek, Bear Valley, South Fork
- Two grants totaling \$5.9M for ~\$10M project
- Serves 900 households
- Fiber build-out



BEAD POLICY CONSIDERATIONS

Remaining Non-Deployment Fund Priorities:

- Ensuring BEAD Project Success
 - Permitting
 - Supply chain constraints
- Strengthen Statewide Networks
 - Network hardening
 - Technical debt retirement / public safety upgrades
- Promote Economic Development
 - Data center development