

# Alaska Carl Perkins Programs House Education Committee

Alaska Department of Education and Early Development  
Brad Billings, Administrator – Career and Technical Education  
Kelly Manning, Innovation and Education Excellence Division  
Deputy Director

March 25, 2026



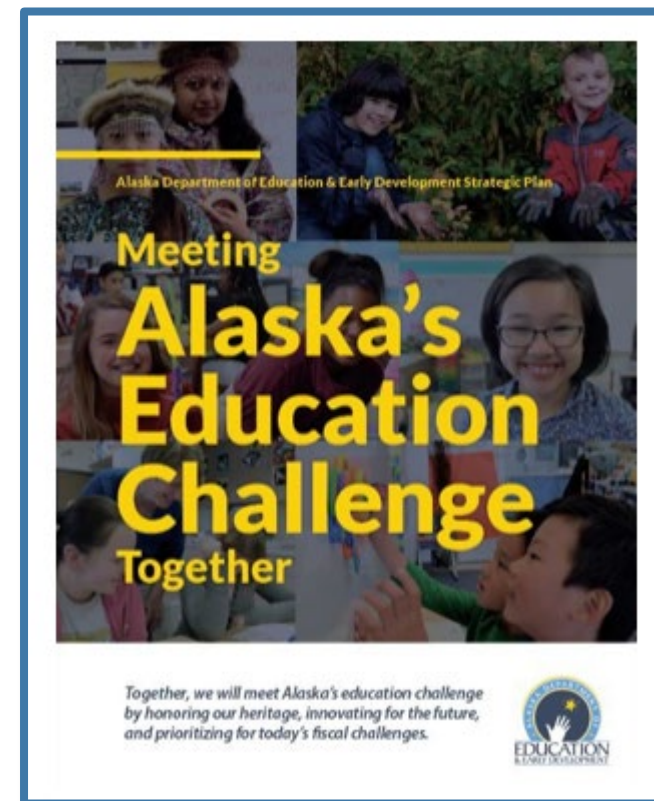
# Mission, Vision, and Purpose

Mission	Vision	Purpose
<p>An excellent education for every student every day.</p>	<p>All students will succeed in their education and work, shape worthwhile and satisfying lives for themselves, exemplify the best values of society, and be effective in improving the character and quality of the world about them.</p> <p>- Alaska Statute 14.03.015</p>	<p>DEED exists to provide <b>information, resources, and leadership</b> to support an excellent education for every student every day.</p>

# Strategic Priorities: Alaska's Education Challenge

## Five Shared Priorities:

1. Support all students to read at grade level by the end of third grade.
2. Increase career, technical, and culturally relevant education to meet student and workforce needs.
3. Close the achievement gap by ensuring equitable educational rigor and resources.
4. Prepare, attract, and retain effective education professionals.
5. Improve the safety and well-being of students through school partnerships with families, communities, and tribes.



[education.alaska.gov/akedchallenge](http://education.alaska.gov/akedchallenge)

# Federal Carl Perkins CTE Programs

- Approximately \$1.4 billion distributed to states via formula
- Develop, implement, and improve Career and Technical Education (CTE) Programs
- Secondary and Postsecondary institutions
- Based on Comprehensive Local Needs Assessment (every two years)
- Distributed by United States Department of Labor (USDOL) Payment Management System through reimbursements

# Alaska Carl Perkins CTE Programs

Alaska's School Year 2026 total allocation: \$5,909,176

- At least 85 percent passed through to school districts and postsecondary institutions for local CTE programs
  - 45 school districts applied this year \$4,523,253
    - 22 smaller districts – minimum allocation of \$20K
    - 23 districts by demographics – up to \$1.4M
  - Four postsecondary institutions \$567,952
    - University of Alaska Programs (\$150K per year, for three years)

Funds noted in whole dollars.

# Alaska Carl Perkins CTE Initiatives

- Required Grants:
  - Staff Professional Development Grants \$ 140,943
  - Non-Traditional Occupation Grants \$ 59,925
  - Alaska Department of Corrections – workforce development \$ 25,146
- State Administrative Activities (5 percent) \$295,458
  - DEED staffing, technical assistance, monitoring, and reporting
  - State matching funds for administration
- State Leadership Activities (up to 10 percent)
  - Support of statewide technical assistance conferences \$ 214,539
  - Career and Technical Student Organizations (CTSO) Support \$ 60,000
  - Partnership support \$ 21,960

Funds noted in whole dollars.

# Allowable Expenses

## Reimbursed through DEED's online Grants Management System

- Program Development: Designing new CTE programs, upgrading equipment, and program supplies
- Curriculum and Instruction: Aligning technical education with academic standards and industry technical standards
- Professional Development: Staffing and training for teachers, faculty, and counselors
- Student Support: Providing mentoring, student certification and dual credit fees, and support services to students and special populations

# CTE Program of Study

- Stackable courses – foundational and technical
- Linked to standards:
  - academic
  - technical
  - employability
- Dual credit
- Postsecondary credentials
- Work-based learning



## Health Care

### Why take a health care course?

Health careers are growing in the YK Delta. Regardless of area of focus there is a job for you. Students learn about personal, family, and environmental health issues that will serve them and their community for life.

#### Course Pathway Sequence

- Middle School
  - Intro to Careers
  - Middle School Health
- Highschool 9-12
  - Intro to Health Care
  - Math for Health Care
  - 
  - Medical Terminology
  - Anatomy and Physiology
  - 
  - CNA
  - Work Based Learning - YK Hospital Bethel
  - Work Based Learning- CHAP Home Village

#### Access Points:

- VTC
- Ready
- Intensive
- Alaska Excel

#### Post Secondary Recognized Credentials

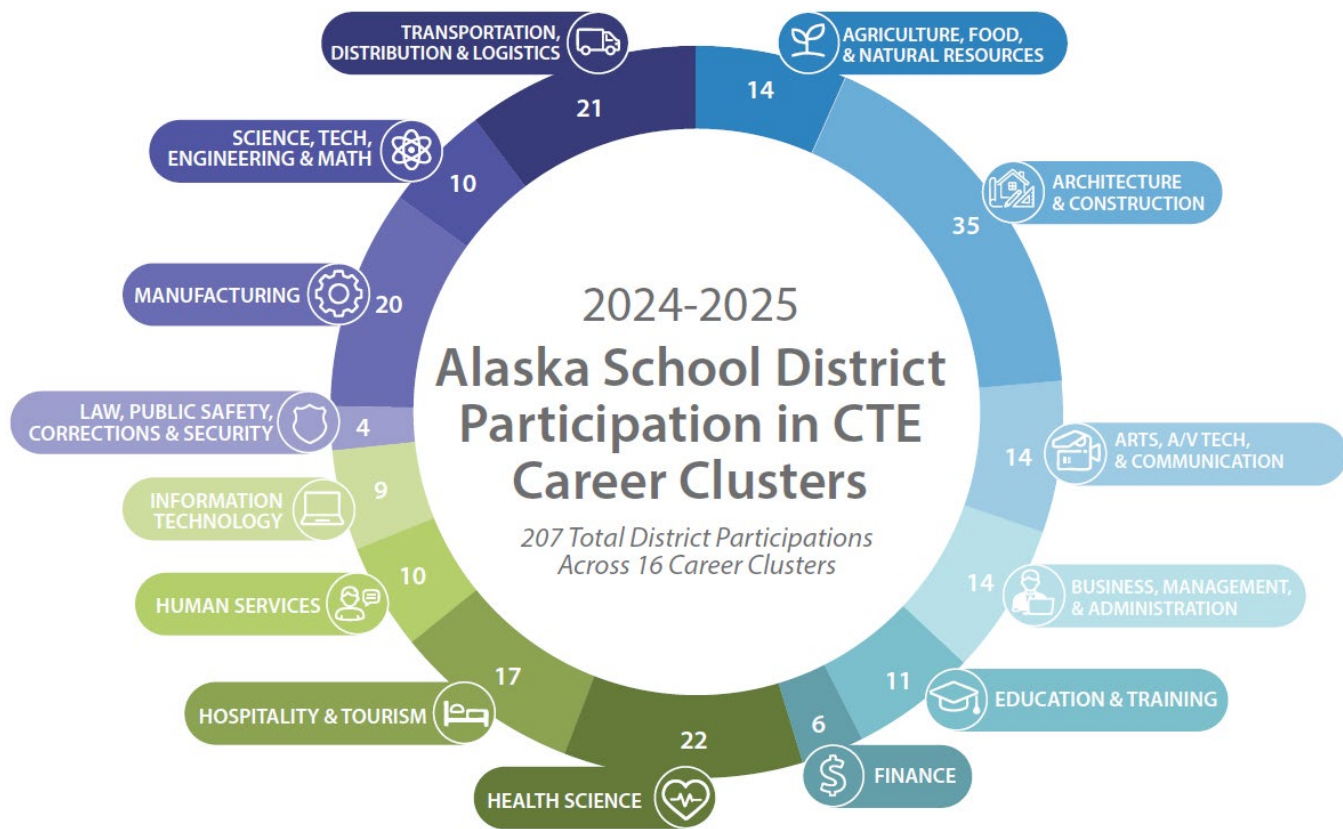
Soft Skills Certification  
 Medical Terminology  
 Medical A & P  
 CNA



# Career and Technical Education ‘Deserts’

- DEED collects data on Perkins funded CTE Programs
- DEED does not collect data on projects funded through the CTE factor in the formula
- DEED does not have a statewide CTE data collection to identify all district CTE courses, projects, or activities
- DEED does not have a way to identify CTE ‘deserts’

# Alaska Carl Perkins CTE Course Participation for School Year 2024-2025



District	Transportation, Distribution & Logistics	Agriculture, Food, & Natural Resources	Architecture & Construction	Arts, A/V Tech, & Communication	Business, Management, & Administration	Education & Training	Finance	Health Science	Hospitality & Tourism	Human Services	Information Technology	Law, Public Safety, Corrections & Security	Manufacturing	Science, Tech, Engineering & Math
Anchorage	●	●	●	●	●	●	●	●	●	●	●	●	●	●
Annette Island	●													
Bering Strait	●		●		●									
Bristol Bay	●				●									
Copper River	●				●									
Cordova	●	●			●	●	●							
Craig	●				●									
Delta/Greely	●				●									
Denali Borough	●													
Dillingham	●												●	●
Fairbanks	●	●	●	●	●	●	●	●	●	●	●	●	●	●
Galena	●				●	●	●						●	●
Haines	●	●			●	●	●						●	●
Juneau	●	●	●	●	●	●	●	●	●	●	●	●	●	●
Kashunamiut	●													
Kenai	●	●	●	●	●	●	●	●	●	●	●	●	●	●
Ketchikan	●				●	●								
Klawock	●												●	●
Kodiak	●	●	●	●	●	●							●	●
Kuspuk	●				●									
Lake & Peninsula	●				●								●	●
Lower Kuskokwim	●		●		●								●	●
Lower Yukon	●	●	●	●	●	●	●	●	●	●	●	●	●	●
Mat-Su	●	●	●	●	●	●	●	●	●	●	●	●	●	●
Mt. Edgecumbe	●												●	●
Nenana	●												●	●
Nome	●													
North Slope	●	●	●	●	●	●	●	●						●
Northwest Arctic	●	●	●	●	●	●	●	●						●
Petersburg	●	●			●	●							●	●
Pribilof	●		●											
Sitka	●				●	●							●	●
Skagway	●													
Southeast Island	●	●	●	●	●		●							●
Southwest Region	●												●	●
Unalaska	●	●	●	●	●									
Valdez	●	●	●	●	●									●
Wrangell	●												●	●
Yukon/Koyukuk	●	●	●	●	●	●	●	●	●	●	●	●	●	●
Yupit	●													
<b>Total</b>	<b>14</b>	<b>35</b>	<b>14</b>	<b>14</b>	<b>11</b>	<b>6</b>	<b>22</b>	<b>17</b>	<b>10</b>	<b>9</b>	<b>4</b>	<b>20</b>	<b>10</b>	<b>21</b>

Ten Alaska school districts elected to not receive Perkins funding for the 2024-2025 school year; three districts received funding but did not report any student participation in courses.

# Cross-District Collaboration - Horizontal

“We are stronger together!”

- Short-term Intensive Program – an Alaskan innovation!
- Multi-district partnerships
  - Chugach School District – Voyage to Excellence
  - Alaska EXCEL
  - Galena Interior Learning Academy
  - Lower Yukon School District - Kusilvak Career Academy
  - Bristol Bay Regional CTE Program

# Post-Secondary Workforce Partner Connections - Vertical

- Universities/Colleges – Dual Credit
- Department of Labor – Technical Vocational Education Program Training (TVEP) Partners, Alaska Vocational Technical Center (AVTEC), and Career Guides
- Local Industry/Employer training – Work-Based Learning
- Tribal Organizations and Native Corporations

# Contact Information

## **Kelly Manning**

Deputy Director, Innovation and Education Excellence

[kelly.manning@alaska.gov](mailto:kelly.manning@alaska.gov)

(907) 465-8431

## **Brad Billings**

Administrator, Career and Technical Education

[brad.billings@alaska.gov](mailto:brad.billings@alaska.gov)

(907) 465-8720

## **Dr. Moncia Goyette**

Director, Innovation and Education Excellence

[monica.goyette@alaska.gov](mailto:monica.goyette@alaska.gov)

907-465-2800