



# Alaska Department of Transportation & Public Facilities Federal Funding To Date & Planning for the Future

James Marks, MBA

Director, Planning & Program Development

Judy Chapman

Deputy Director of Planning

February 21, 2023

Our mission is to *Keep Alaska Moving* through service and infrastructure.



# AGENDA

## 1) Retrospective

### ***“The year so far”***

- Federal Funding & Infrastructure Investment and Jobs Act (IIJA)
- Opportunities & Lessons Learned

## 2) Planning

### ***“It all starts in planning”***

- Family of Plans & Recent Changes

## 3) Deployment

### ***“We’re doers. We do”***

- Strategic Partners
- Community-driven Planning
- New State Funding Programs



# RETROSPECTIVE





# FEDERAL FUNDING OVERVIEW



Program Examples	State	MPO	Local	Tribe	PA*	Territory	FLMA*
Apportioned programs (formula)	✓						
Bridge Program (formula)	✓			✓			
National Electric Vehicle Formula Program	✓		✓				
Safe Streets and Roads for All program		✓	✓	✓			
Promoting Resilient Operations for Transform...	✓	✓	✓	✓	✓		✓
Charging and Fueling Infrastructure Program	✓	✓	✓	✓	✓	✓	
Congestion Relief Program	✓	✓	✓				
Bridge Investment Program (discretionary)	✓	✓	✓	✓	✓		✓
Reconnecting Communities Pilot Program	✓	✓	✓	✓			
Rural Surface Transportation Grants	✓		✓	✓			
Infrastructure for Rebuilding America	✓	✓	✓	✓	✓		✓
National Infrastructure Project Assistance	✓	✓	✓	✓	✓		
Local and Regional Project Assistance	✓	✓	✓	✓	✓	✓	

MPO – Metropolitan Planning Organization

PA\* - Special purpose district or **public authority** with transportation function

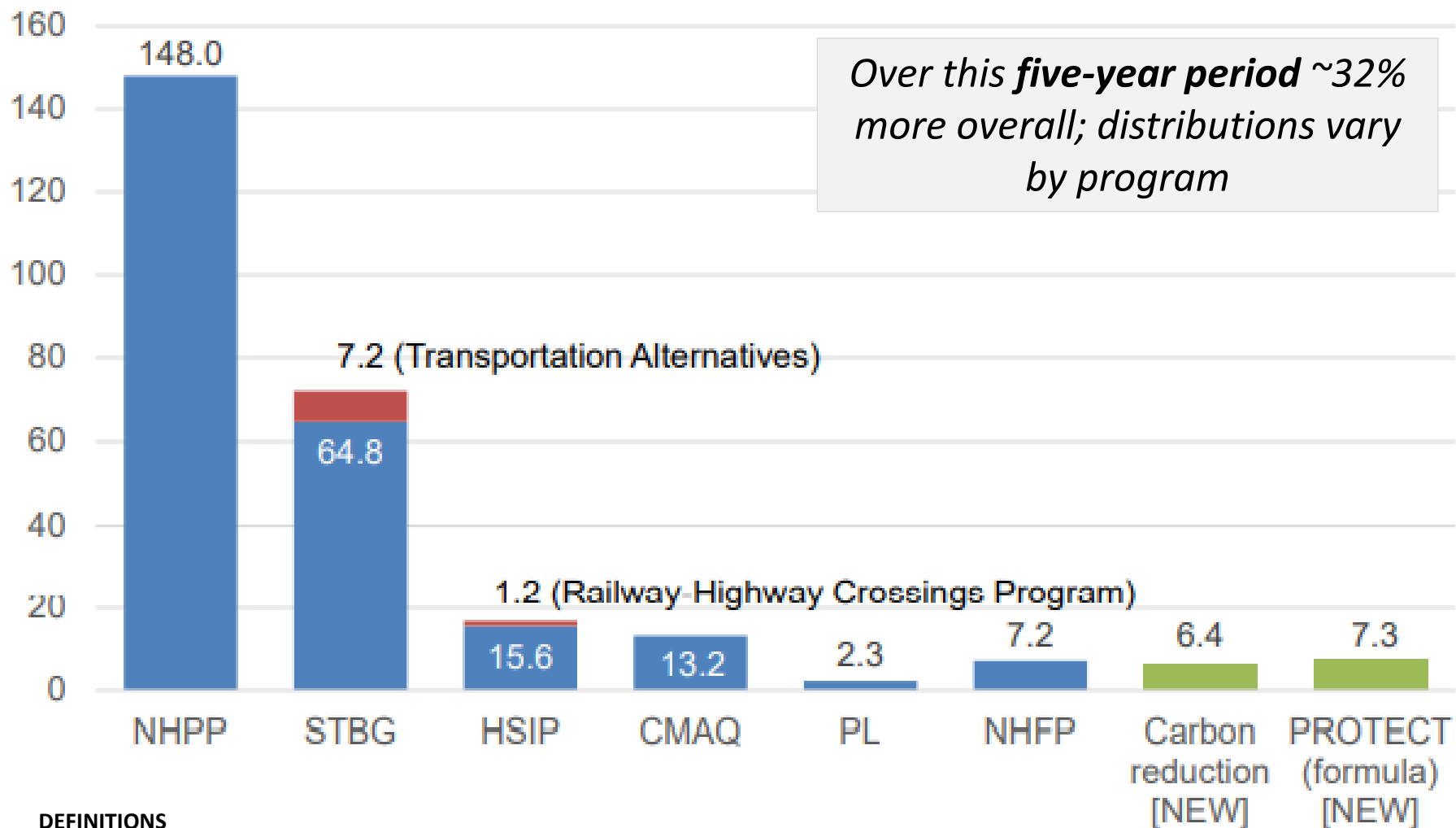
FLMA\* - Federal Land Management Agency



# EIGHT APPORTIONED PROGRAMS



\$ B, FY 22-26



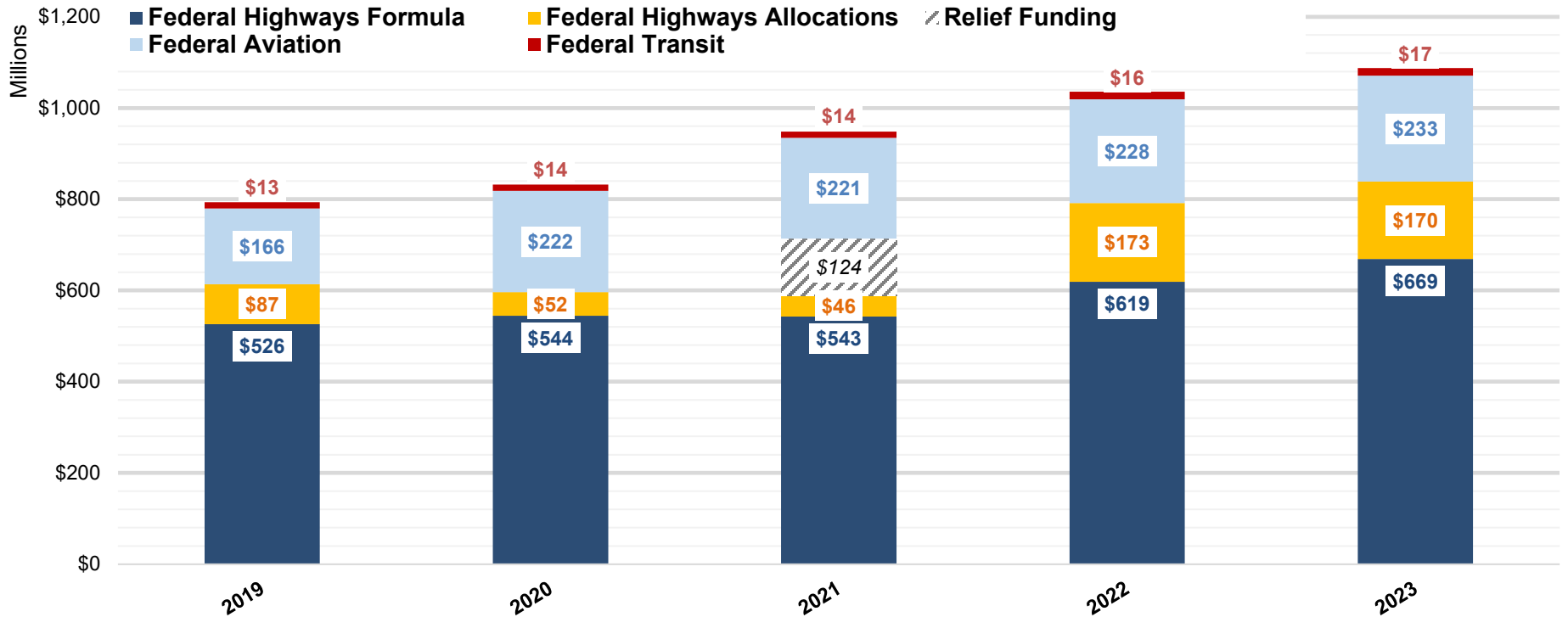
## DEFINITIONS

National Highways Performance Program (NHPP)  
 Surface Transportation Block Grant (STBG)  
 Highways Safety Improvement Program (HSIP)

Congestion Mitigation & Air Quality (CMAQ)  
 Metropolitan Planning Funds (PL)  
 National Highways Freight Program (NHFP)  
 Promoting Resilient Operations for Transformative, Efficient, and Cost-Saving Transportation (PROTECT)



# ALASKA'S TRANSPORTATION SHARE



Fiscal Year	Federal Highways		Relief Funding	Federal Aviation	Federal Transit	Total
	Formula	Allocations				
2019	\$526,269,793	\$87,364,461		\$166,000,000	\$13,493,968	\$793,128,222
2020	\$544,386,280	\$52,008,236		\$222,200,000	\$13,654,331	\$832,248,847
2021	\$543,009,285	\$46,434,890	\$124,402,044	\$220,500,000	\$13,677,640	\$948,023,859
2022	\$619,147,829	\$172,669,691		\$227,500,000	\$16,486,340	\$1,035,803,860
2023*	\$669,036,764	<b>\$169,509,538**</b>		<b>\$232,500,000**</b>	\$16,747,556	\$1,087,793,858
10 Year Total	\$5,341,913,925	\$611,858,895	\$124,402,044	\$1,974,900,000	\$127,606,344	\$8,180,681,208

\*Additional revenue anticipated from discretionary grant awards in 2023

\*\*Projected; Awaiting full year funding to be provided, post omnibus approval

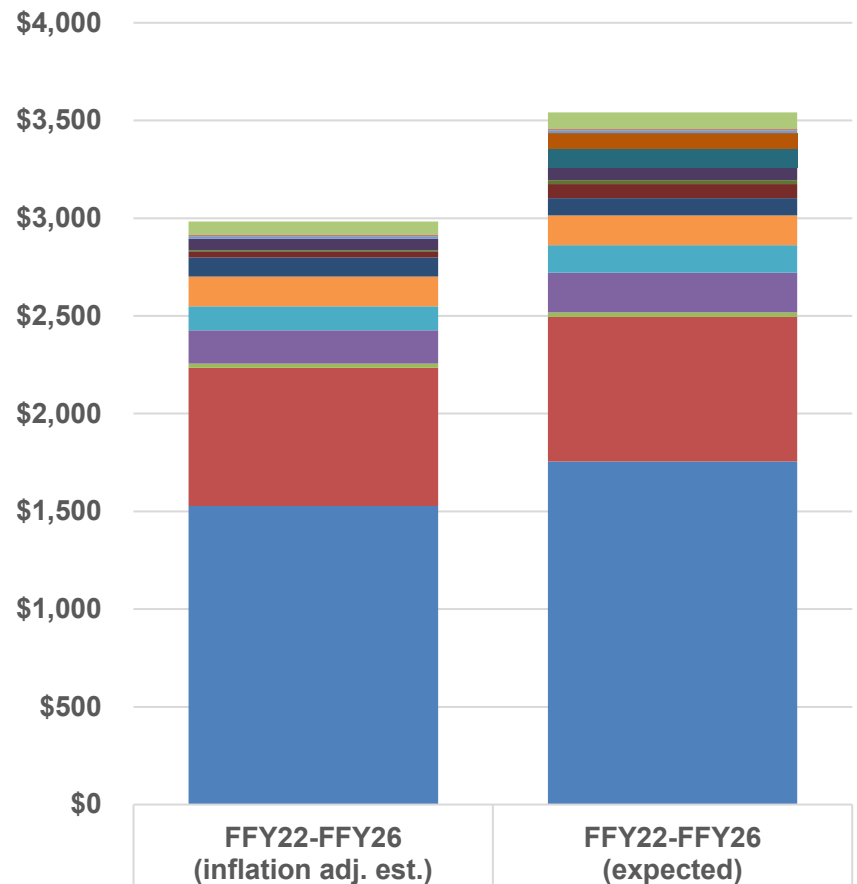


# FEDERAL FORMULA PROGRAMS

(in millions)



	FAST	IIJA		
	FFY22-FFY26 (inflation adj. est.)	FFY22-FFY26 (expected)	FAST vs. IIJA 5 Year DELTA	Growth % of Total
National Highways	\$1,527.90	\$1,755.40	\$227.50	41.90%
Surface Transportation	\$706.70	\$739.20	\$32.60	6.00%
Off-System Bridges	\$21.90	\$22.90	\$1.00	0.20%
Highway Safety	\$169.80	\$203.50	\$33.70	6.20%
Sec. 154 & 164 Penalty	\$123.30	\$140.30	\$17.00	3.10%
Congestion Mitigation & Air	\$152.60	\$152.90	\$0.40	0.10%
National Highways Freight	\$98.30	\$88.70	(\$9.60)	-1.80%
Transportation Alternatives	\$27.90	\$71.10	\$43.20	8.00%
Recreational Trails	\$8.10	\$20.70	\$12.60	2.30%
Statewide Planning	\$57.90	\$65.20	\$7.30	1.30%
PROTECT (new)	\$0.00	\$93.10	\$93.10	17.10%
Carbon Reduction (new)	\$0.00	\$81.90	\$81.90	15.10%
Metropolitan Planning	\$12.90	\$15.60	\$2.70	0.50%
Rail-Hazard Crossings	\$6.50	\$6.40	(\$0.10)	0.00%
Federal Transit	\$68.80	\$85.00	\$16.20	2.90%
<b>TOTAL</b>	<b>\$2,982.60</b>	<b>\$3,541.90</b>	<b>\$559.50</b>	



- Federal Transit Administration (FTA)
- Metropolitan Planning
- PROTECT (new)
- Recreational Trails
- National Highways Freight
- Sec. 154 & 164 Penalty Funds
- Off-System Bridges
- National Highways
- Rail-Hazard Crossings
- Carbon Reduction (new)
- Statewide Planning & Research
- Transportation Alternatives Program
- Congestion Mitigation & Air Quality
- Highway Safety
- Surface Transportation



# CURRENT CHALLENGES

1. **“Disconnected” from land-use, community, and regional needs**
2. **“Silo Mentality” vs. “Team mindset”**
3. **Legacy systems and data practices; Information dominance**
4. **Planning holistically; Multimodal level-of-service (LOS)**
5. **Current regulations are onerous, outdated, and obsolete**
6. **Slow-moving bureaucracies & processes**
7. **Vague working definitions for urban, rural, remote, resiliency, etc.**



# PLANNING



# FAMILY OF PLANS



TIER I

## Long-Range Transportation Plan

Multimodal Statewide Plan

POLICIES, GOALS, &  
OBJECTIVES

TIER II

## Strategic Investment Plan

From LRTP: (1) Goals, Policies & Actions; (2)  
Regional Priorities; (3) Modal Opportunities

FUNDING  
DISTRIBUTION &  
INVESTMENT LEVELS

TIER III

## Modal & System Plans

From LRTP:

- Goals & Objectives
- Modal Facts & Opportunities

From Strategic Plans:

- Funding Distribution
- Fiscal Constraint
- Program Objectives & Criteria

TIER IV

## Regional, Area, & Corridor Plans

From LRTP:

- Goals & Objectives

From Modal & System Plans:

- Modal Requirements
- Level of Service

From Strategic Plans:

- Funding Distribution
- Fiscal Constraint

REGIONAL PRIORITIES, STRATEGIES,  
ACTIONS, & PROJECTS!

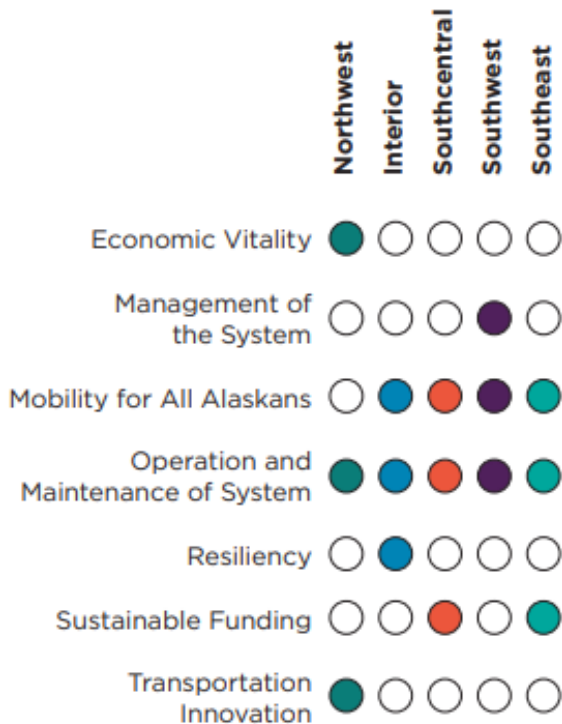


# PUBLIC PERCEPTIONS OF REGIONAL PRIORITIES

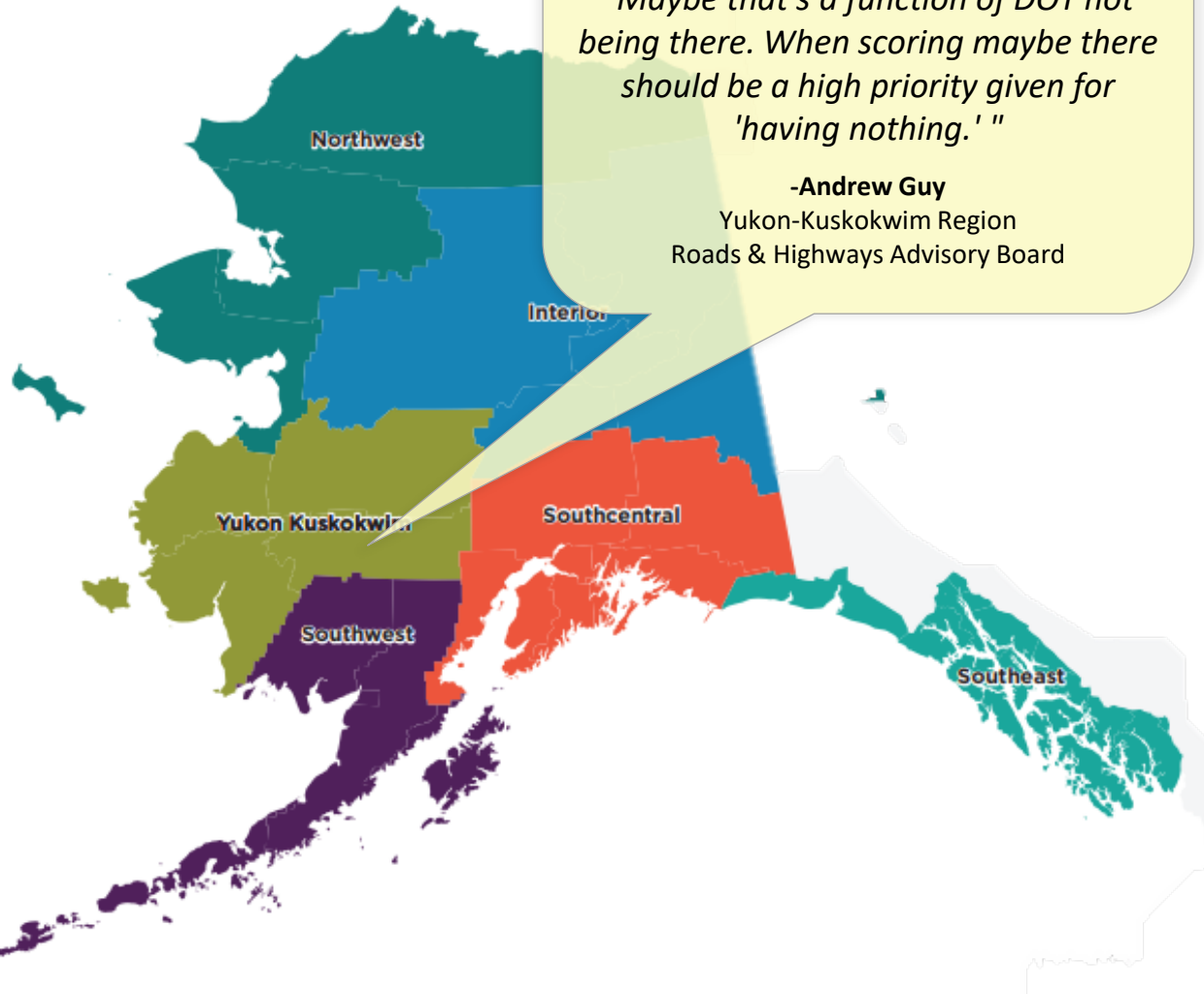


**Figure 1:** Input Received Through Public Engagement

## Top 3 Transportation Priorities by Region

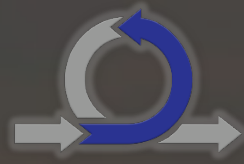


Note: Priorities marked are the top three for each region, based on survey results. There were no responses from Yukon Kuskokwim.





# STRATEGIC INVESTMENT AREAS



**SAFETY**

**ECONOMIC VITALITY**

**STATE OF GOOD REPAIR (SOGR)**

**RESILIENCY**

**SUSTAINABILITY**



# DEPLOYMENT



# FAMILY OF PROGRAMS



## Existing Programs

### 1. Solicitations

- a) Community Transportation, Transportation Alternatives, and Harbors Program

### 2. State Programs

- a) Examples: Highway Safety Improvement Program, Bridge, Culverts, Research, etc.

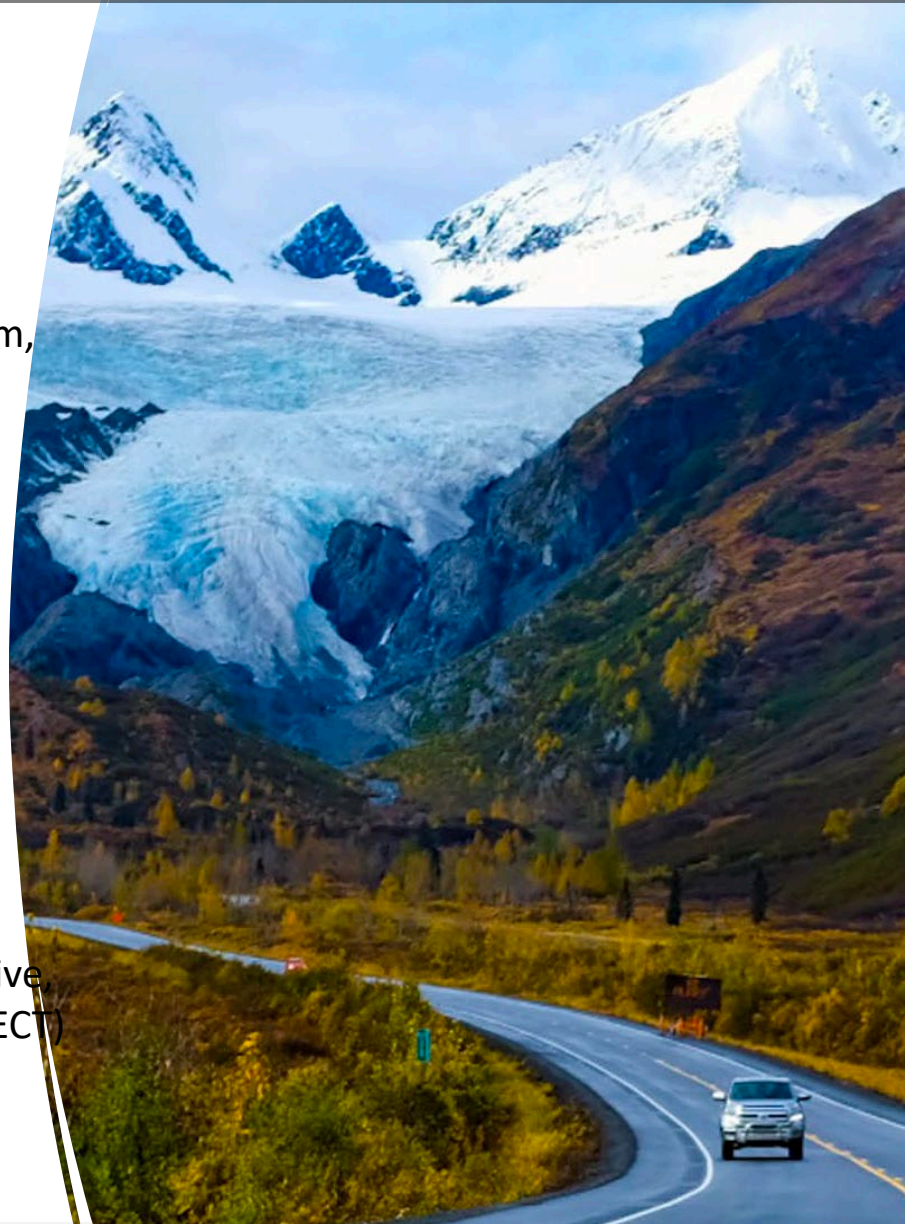
## New Programs

### 1. Solicitations

- a) Safe Ice Roads for Alaskans
- b) Rural Ports, Docks & Barge Landings
- c) Community Bridge Program
- d) Resiliency & Coastal Protection Program
- e) Sustainable Transportation Program

### 2. State Programs

- a) Carbon Reduction Program (CRP)
- b) Promoting Resilient Operations for Transformative, Efficient, and Cost-Saving Transportation (PROTECT)





# SAFE ICE ROADS FOR ALASKANS



<b>Cycle</b>	Annually
<b>Timeline</b>	11/30/2022 Awards Announced!
<b>Amount</b>	\$2,000,000
<b>Eligible Activities</b>	Planning, preparation, surveying, ice road construction, preventative maintenance, safety measuring & observing, marking, and closures
<b>Eligible Entities</b>	Cities, villages, tribes & political sub-division of government

## Awards

1.	Native Village of Napaimute	\$450,000
2.	Tanana Tribal Council	\$32,000
3.	Crooked Creek Traditional	\$60,000
4.	Village of Wainwright	\$375,000
5.	Northwest Arctic Borough	\$300,000
6.	Village of Aniak	\$160,000
7.	Chuathbaluk Traditional	\$20,000
8.	Native Village of Kalskag	\$15,000
9.	Whitestone Community Assoc.	\$80,000
10.	North Slope Borough	\$250,000





## ***RURAL PORTS, DOCKS & BARGE LANDINGS***

<b>Cycle</b>	Every 2 years
<b>Anticipated NOFO</b>	CY2023 Quarter 2
<b>Funding Amount</b>	\$27,000,000
<b>Eligible Activities</b>	Rural ports, docks, barge landings, and rural coastal infrastructure
<b>Eligible Entities</b>	Local or community government, villages, tribal entities, & political sub-divisions of government not connected by roads





# COMMUNITY BRIDGE PROGRAM

<b>Cycle</b>	Every 2 years
<b>NOFO</b>	CY2023 Quarter 1
<b>Amount</b>	\$54,000,000
<b>Eligible Activities</b>	Bridges on the National Bridge Inventory (NBI), replacing poor bridges, rehabilitating fair bridges, bridge preservation & protection, tribally owned bridges on public roads, and projects that replace/rehabilitate culverts on the NBI
<b>Eligible Entities</b>	Local or community government, villages, tribal entities, & Political sub-divisions of government





# RESILIENCY & COASTAL PROTECTION PROGRAM

Cycle	Every 2 years
Anticipated NOFO	CY2023 Quarter 2
Funding Amount	\$32,000,000
Eligible Activities	Resiliency Planning Twice-Hit Assets Critical Community Access Evacuation Routes At-Risk Coastal Community Protection
Eligible Entities	Local or community government, villages, tribal entities, & political sub- divisions of government



# COMMUNITY DIRECTED FUNDING

Community Transportation Program (CTP)	\$110,000,000
Transportation Alternatives Program (TAP)	\$25,000,000
Safe Ice Roads for Alaskans (SIRA)	\$2,000,000
Rural Ports, Docks, & Barge Landings	\$27,000,000
Community Bridge Investment Program (CBIP)	\$54,000,000
Resiliency & Coastal Protection Program (RCPP)	\$32,000,000
National Electric Vehicle Infrastructure (NEVI)	\$15,000,000

<b>Total 2023 Community Directed Funding</b>	<b>\$265,000,000</b>
--	----------------------

2020 CTP	\$56,000,000
2019 TAP	\$12,000,000
2013-2019 CTP	\$0
2013-2019 TAP	\$15,000,000

<b>Total 2013-2022 Community Directed Funding</b>	<b>\$83,000,000</b>
---	---------------------

**~220% Increase in Community Directed  
Funding in 2023 from Last Decade Combined**





# STRATEGIC PARTNERS



**Alaska Municipal League**

**AK Regional Dev. Org.**

**Alaska Energy Authority**

**Denali Commission**

**SEALASKA**

**US Fish & Wildlife**

**National Park Service**

**National Forest Service**

**Western Federal Lands**





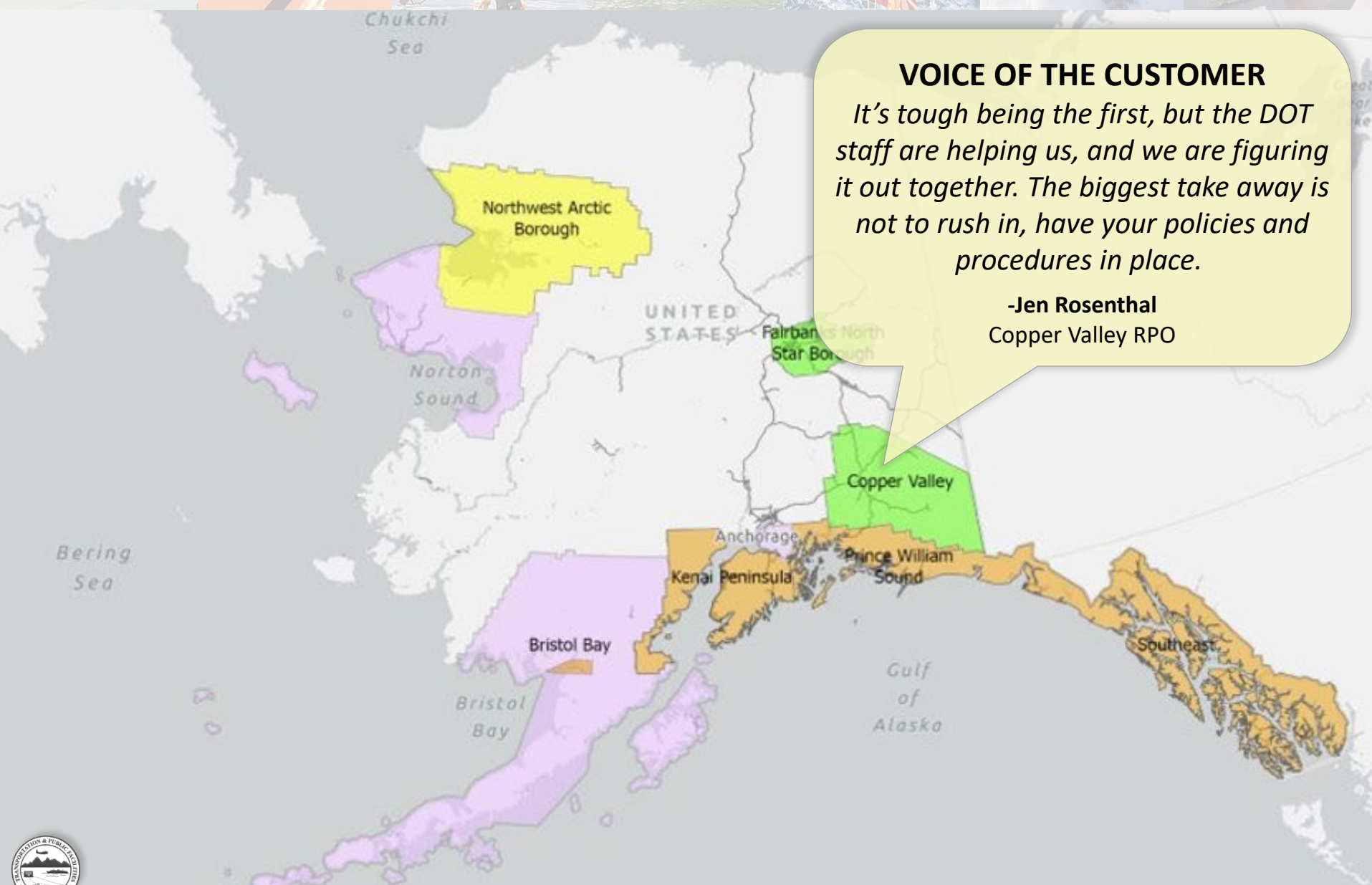
# COMMUNITY-DRIVEN PLANNING REGIONAL PLANNING ORGANIZATIONS



## VOICE OF THE CUSTOMER

*It's tough being the first, but the DOT staff are helping us, and we are figuring it out together. The biggest take away is not to rush in, have your policies and procedures in place.*

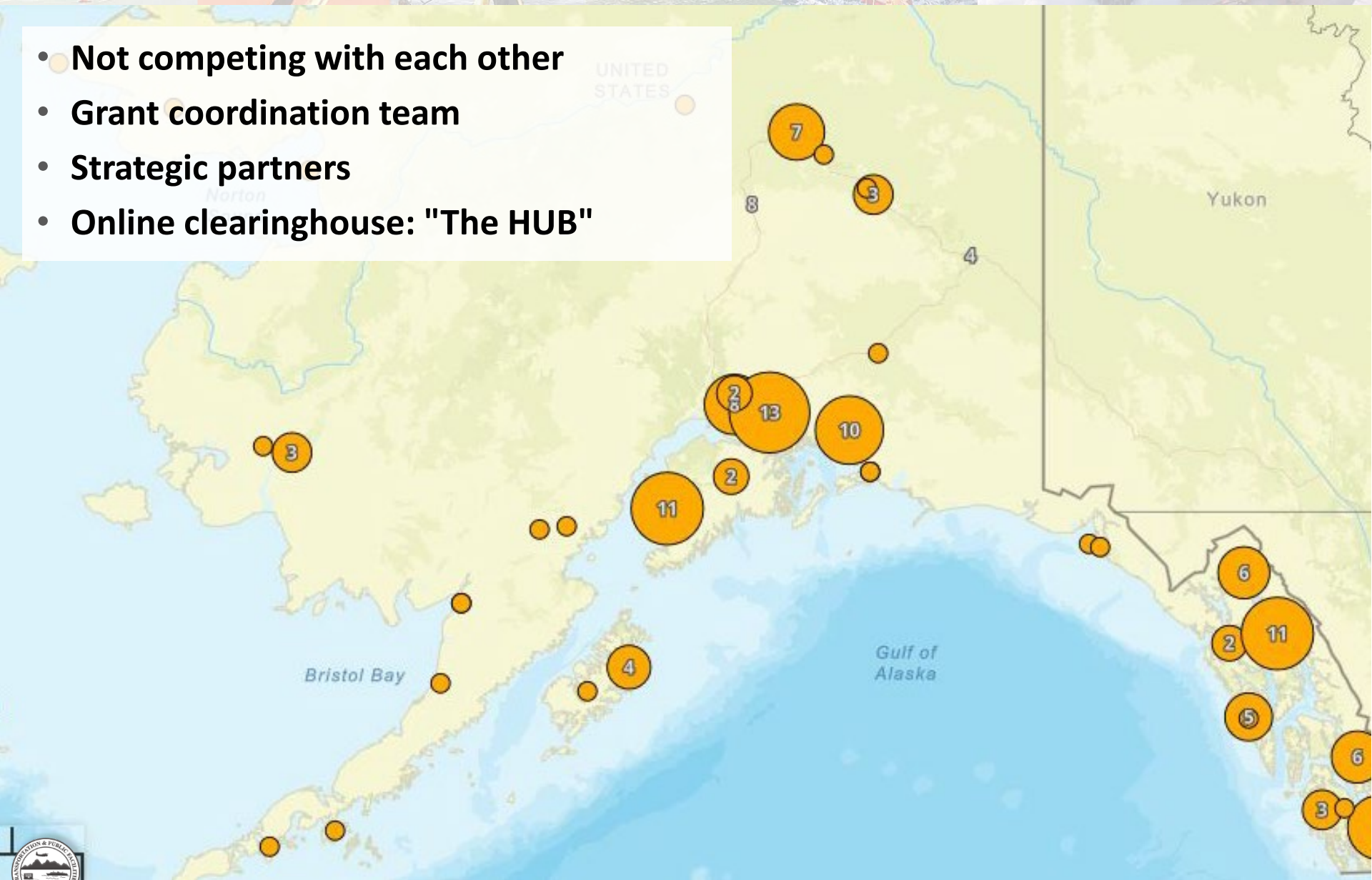
**-Jen Rosenthal**  
Copper Valley RPO





# APPROACH TO DISCRETIONARY GRANTS

- Not competing with each other
- Grant coordination team
- Strategic partners
- Online clearinghouse: "The HUB"



# DISCRETIONARY GRANTS



## Port Infrastructure Development

- Pelican - \$12M
- Auke Bay - \$9M
- Cordova, Chenega, and Tatitlek Port Bundle - \$28M

## MPDG (MEGA/INFRA/Rural)

- TRV - \$195M
- Cordova, Chenega, and Tatitlek Port Bundle - \$25M
- Bethel Chief Eddie Hoffman - \$35M

## NOAA Fish Passage

- Three Mile Creek - \$6M

## Culverts Anadromous Fish Passage

- Applications in process

## Rural and Low/No Ferry Program

- TRV Propulsion - \$86M
- Mainliner Planning - \$9M
- Auke Bay, Pelican, and PWS Docks - \$48M
- Columbia, Tazlina, Matanuska, and Kennecott Vessel Bundle - \$72M
- Operating - \$45M

## Bridge Improvement Program

- Kodiak Russian and Sargent Rivers – planning - \$1M
- Ketchikan Ward Creek - \$23M
- Johnson and Gerstle - \$74M

***>\$850M Submitted through Partnership***





# Questions? Thank you.

JAMES MARKS  
Division Director  
W. (907)465-6981  
[JAMES.MARKS@ALASKA.GOV](mailto:JAMES.MARKS@ALASKA.GOV)

