



Alaska Coalition
on Housing and Homelessness

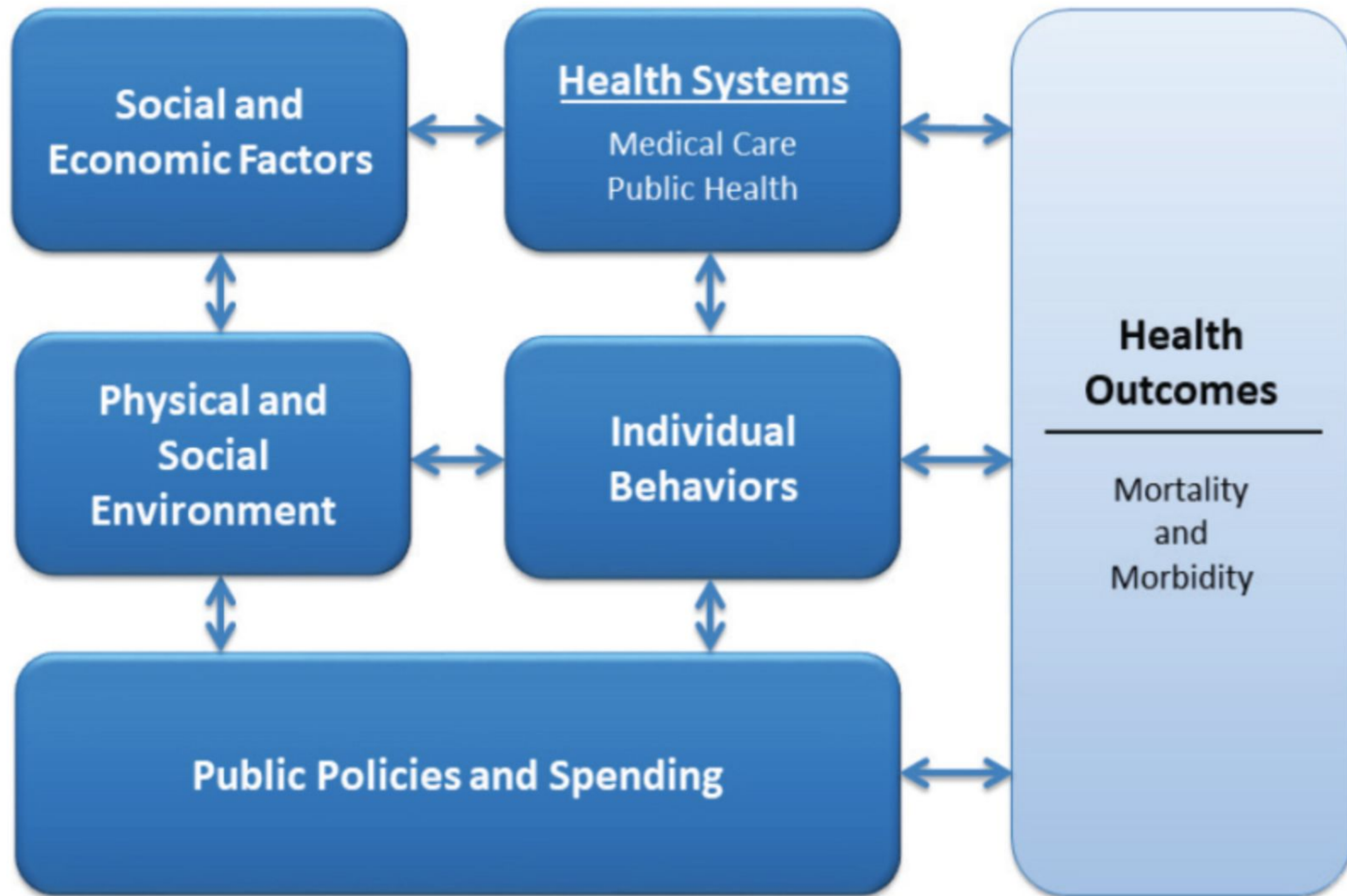
Housing is Health Care

Owen Brooks
Director of Organizational Development

alaskahousing-homeless.org

Overview & Objectives

- ✓ **Common Health Related Needs for People Experiencing Homelessness (PEH)**
- ✓ **Unhoused People's Experiences with Health Care**
- ✓ **Public Health Connections to the Homeless Prevention and Response System**
- ✓ **Data for System Improvement**



Health Care Access and Quality

- Health coverage
- Access to primary care and treatment of chronic conditions
- Access to health services
- Transportation

Education Access and Quality

- Early Childhood Development and Education
- Enrollment in Higher Education
- High School Graduation
- Language and Literacy

Economic Stability

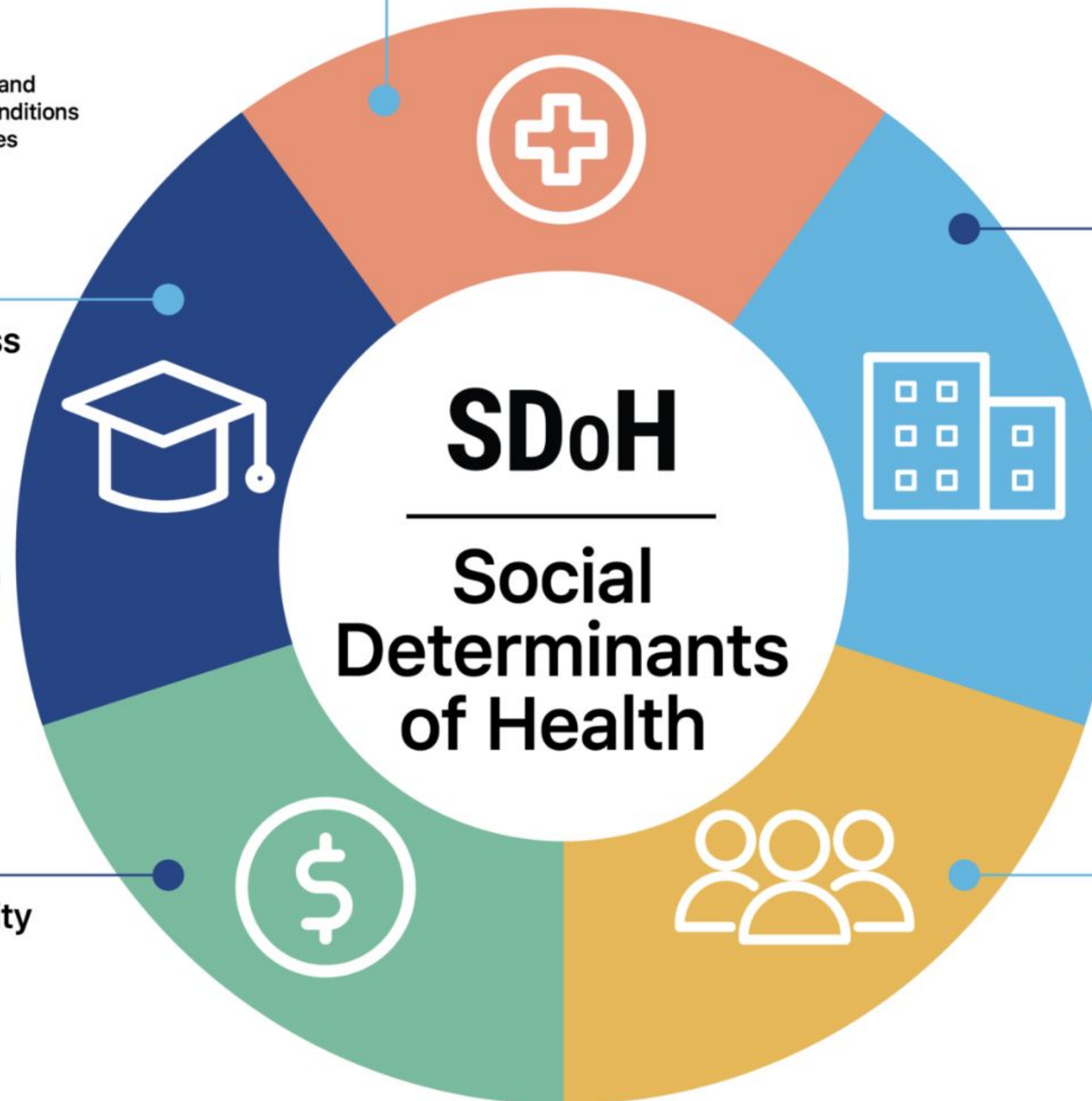
- Employment
- Food Insecurity
- Housing Instability
- Poverty

Neighborhood and Built Environment

- Quality of housing
- Environment with crime & violence
- Access to foods that support healthy eating patterns
- Access to information (Internet access)

Social and Community Context

- Civic Participation
- Discrimination
- Incarceration
- Social Cohesion



Unhoused People's Experiences with Health Care

- **Barriers**
- **Outcomes**
- **Strategies**

Barriers to health care access

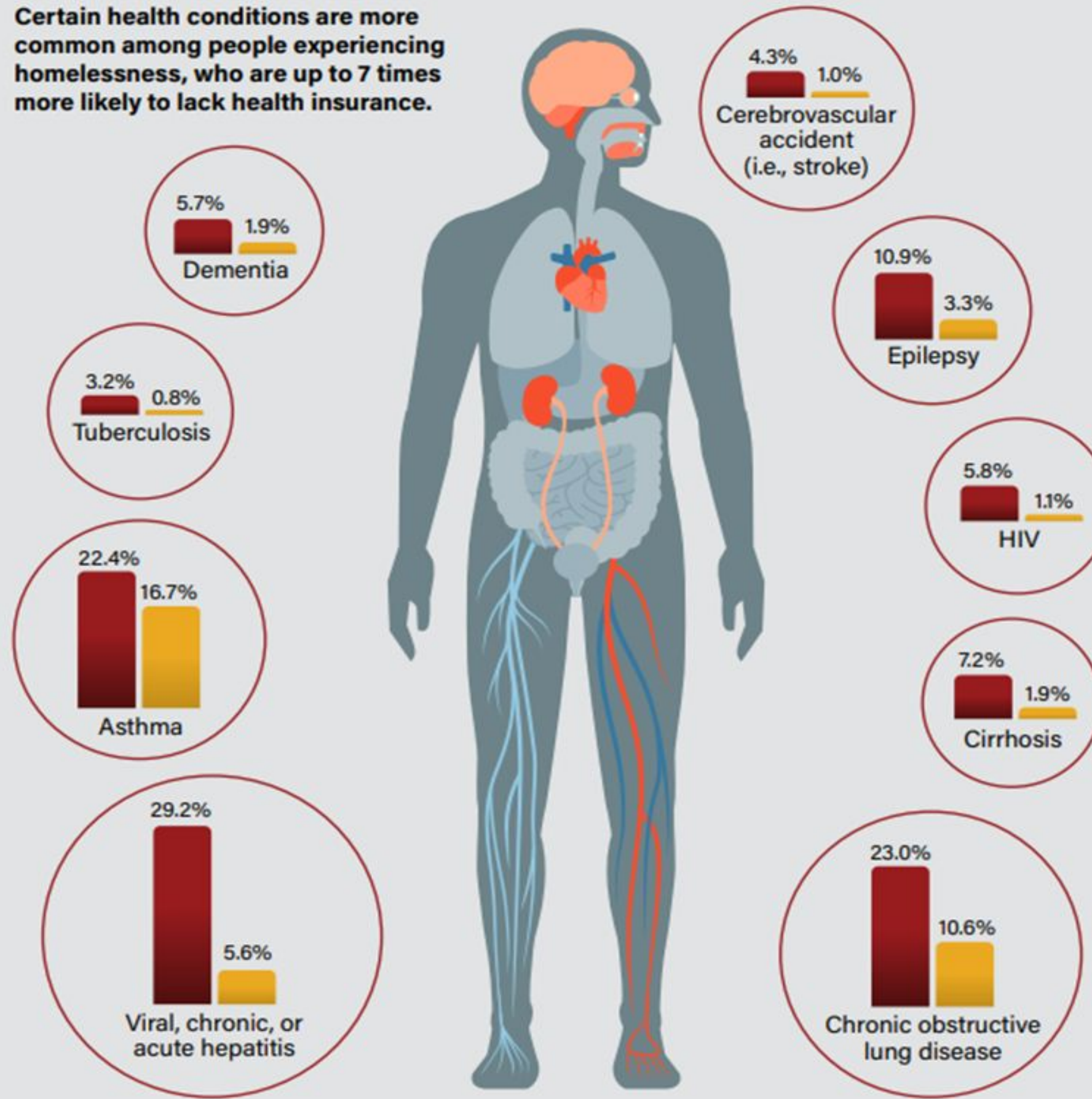
- **Lack of insurance and financial resources**
- **Transportation issues**
- **Unstable housing**
- **Mistrust of the health care system**
- **Stigma and discrimination**
- **Lack of coordination between providers**
- **Health conditions that worsen over time**

Health Outcomes

- ✓ **Increased use of emergency services, high utilization & high cost interventions**
- ✓ **Longer lengths of stay and readmission rates**
- ✓ **Increased risk of preventable disease**
- ✓ **Co-occurring disorders and treatment resistant pathologies**

Housing Is Health Care*

Certain health conditions are more common among people experiencing homelessness, who are up to 7 times more likely to lack health insurance.



● People Who Have Experienced Homelessness
● General Population Sample With Similar or Same Reported Age and Gender

*USICH Federal Strategic Plan on Homelessness:
https://www.usich.gov/sites/default/files/document/All_In.pdf



Strategies to Address Health Disparities

Compared to the general population, a higher proportion of people experiencing homelessness are hospitalized for mental health and substance use conditions. Receiving team based care changes outcomes.

Solutions and Strategies

- 1. Housing First initiatives**
- 2. Mobile health care services**
- 3. Integrating social services**
- 4. Addressing mistrust and stigma**
- 5. Advocacy and policy change**

Public Health Connections to the Homeless Prevention and Response System (HPRS)

- **What is a HUD Continuum of Care (CoC)?**
- **Innovative programs operating in Alaska**
- **Sub-par Rural Housing Conditions**

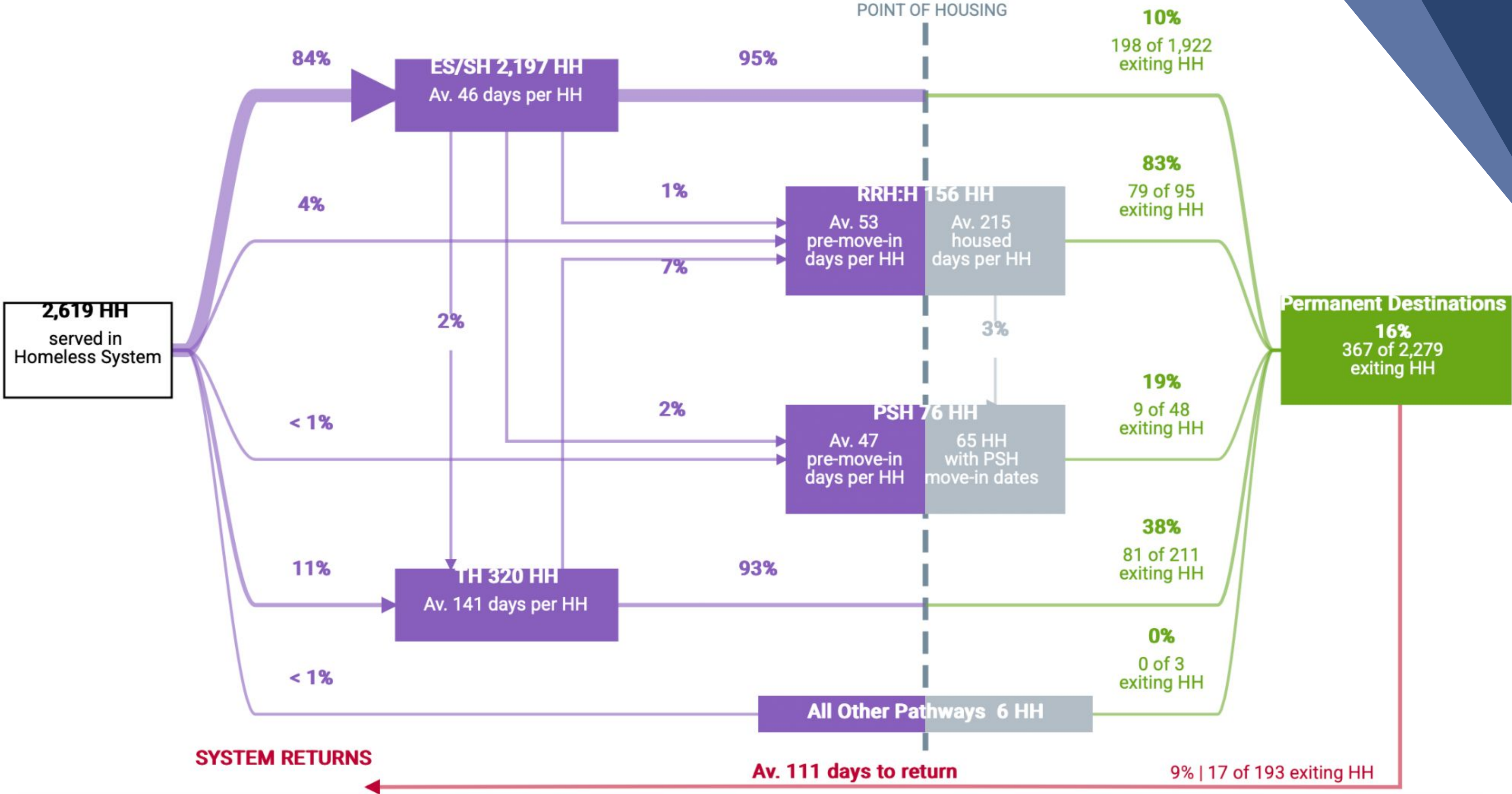
WHAT DO WE DO?



HUD CoC

- **Funder – the collaborative applicant for the annual Notice of Funding Opportunity NOFO, one of the only sustainable funding sources**
- **Advocate to improve policy - at the local, state, and federal levels**
- **Coordinated Entry: pathway to housing & supportive services**
- **Monitor and report data**
- **Support best practices through technical assistance**
- **Housing vs shelters**

61 Days Homeless

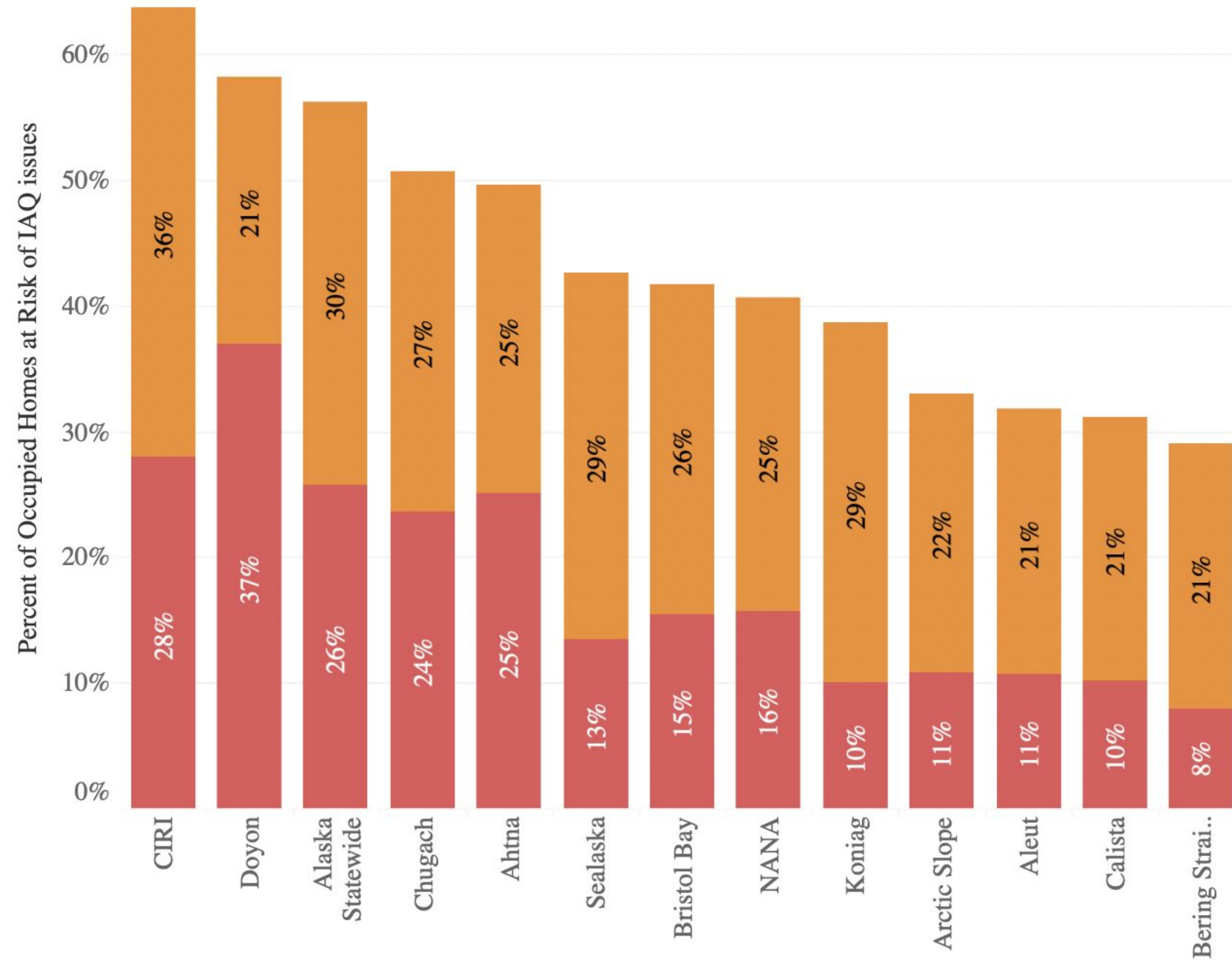


Program Innovation

- Juneau Bartlett Hospital Multi Visit Patient (MVP) & Mat Su Regional Medical Center High Utilizer Mat Su (HUMS)
- Front Street Clinic (FQHC) - SEARHC
- Anchorage Neighborhood Health Clinic (FQHC)
- Coordinated Street Outreach, Mobile Crisis Teams, Mobile Integrated Health
- Complex Care, Brother Francis clinic, medical respite

Increased Risk of Indoor Air Quality Issues

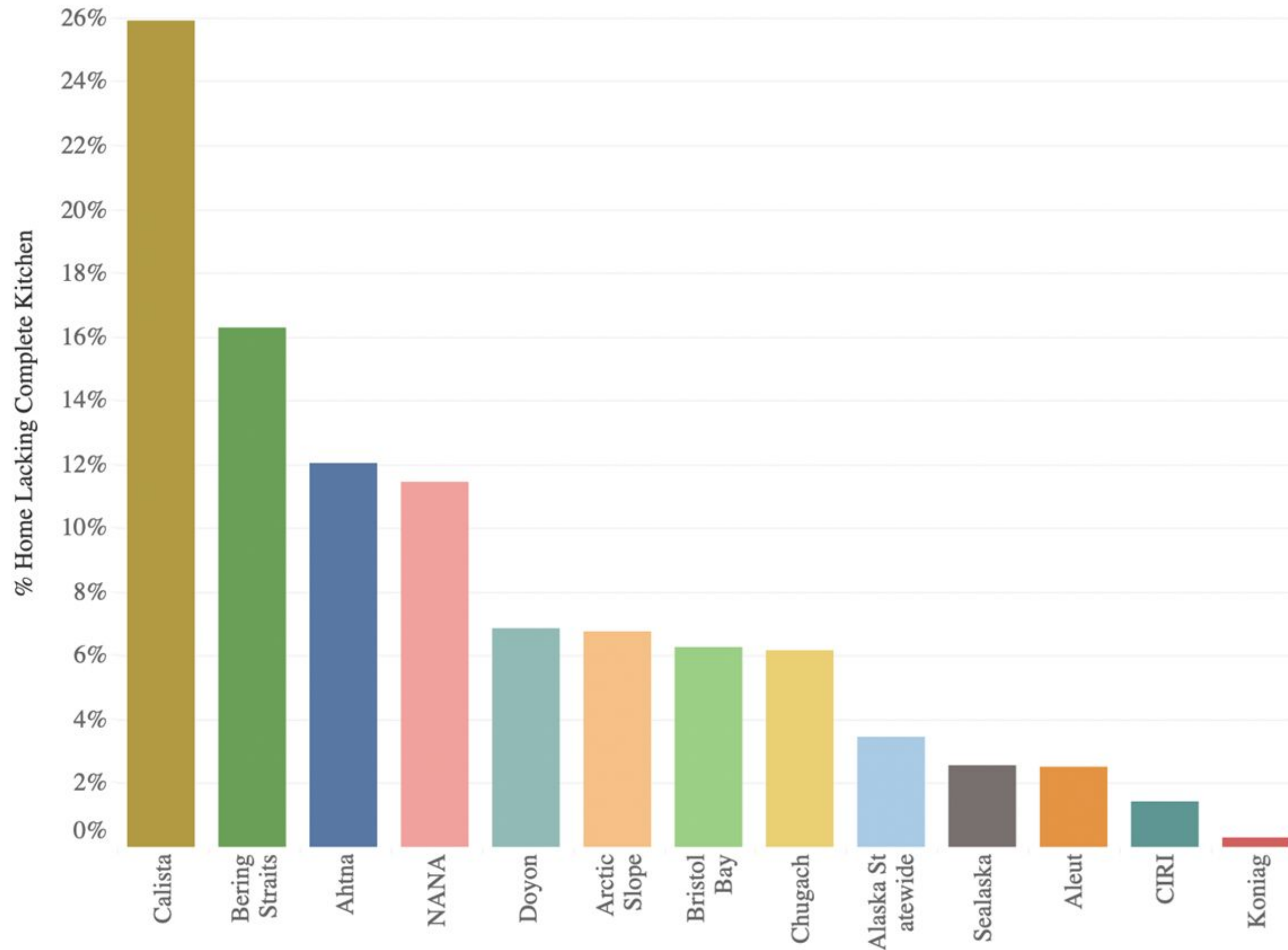
ANCSA Region



Homes that are air-tight but lack mechanical ventilation are at higher risk of indoor air quality and moisture problems.

Homes with Incomplete Kitchens

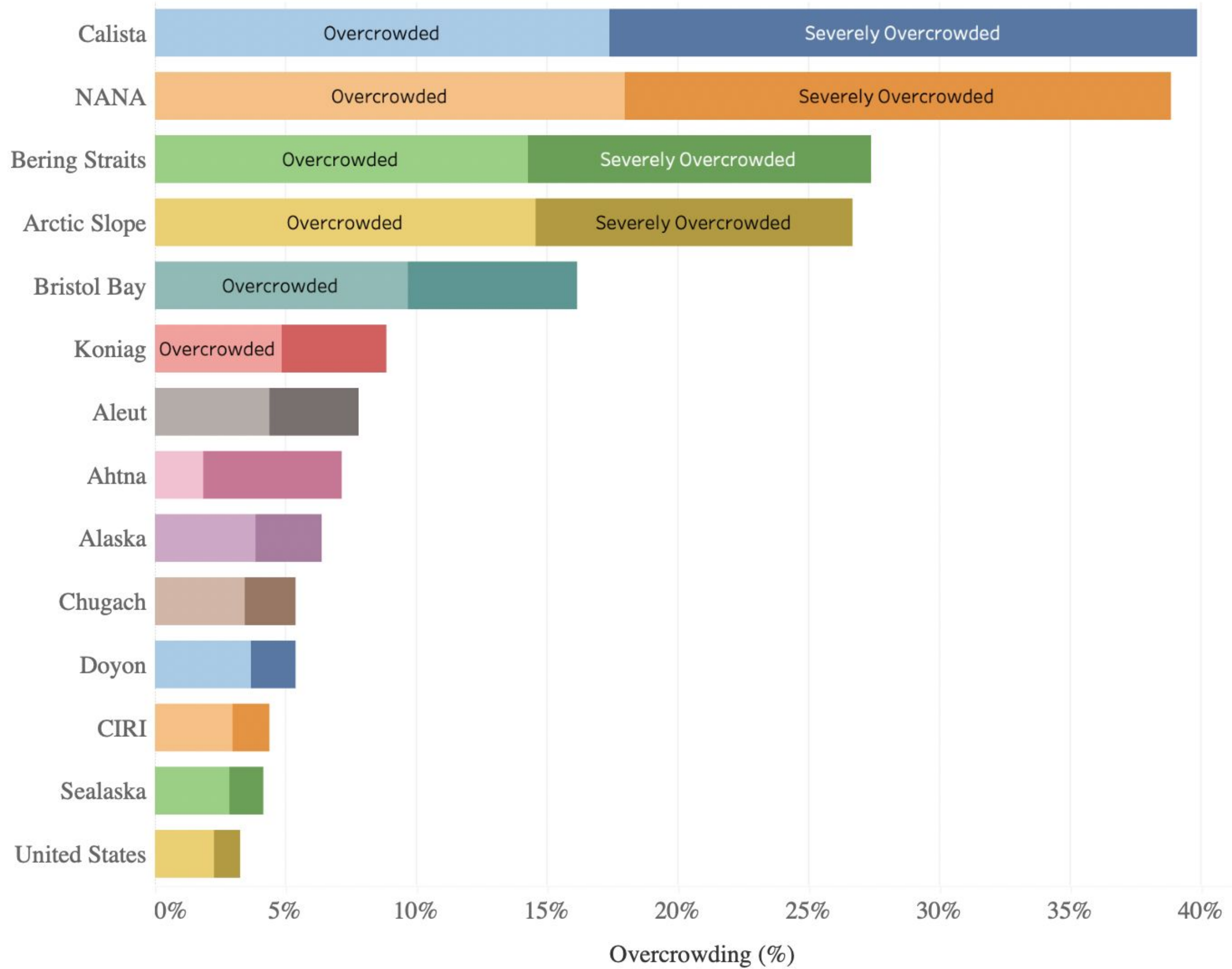
ANCSA Region



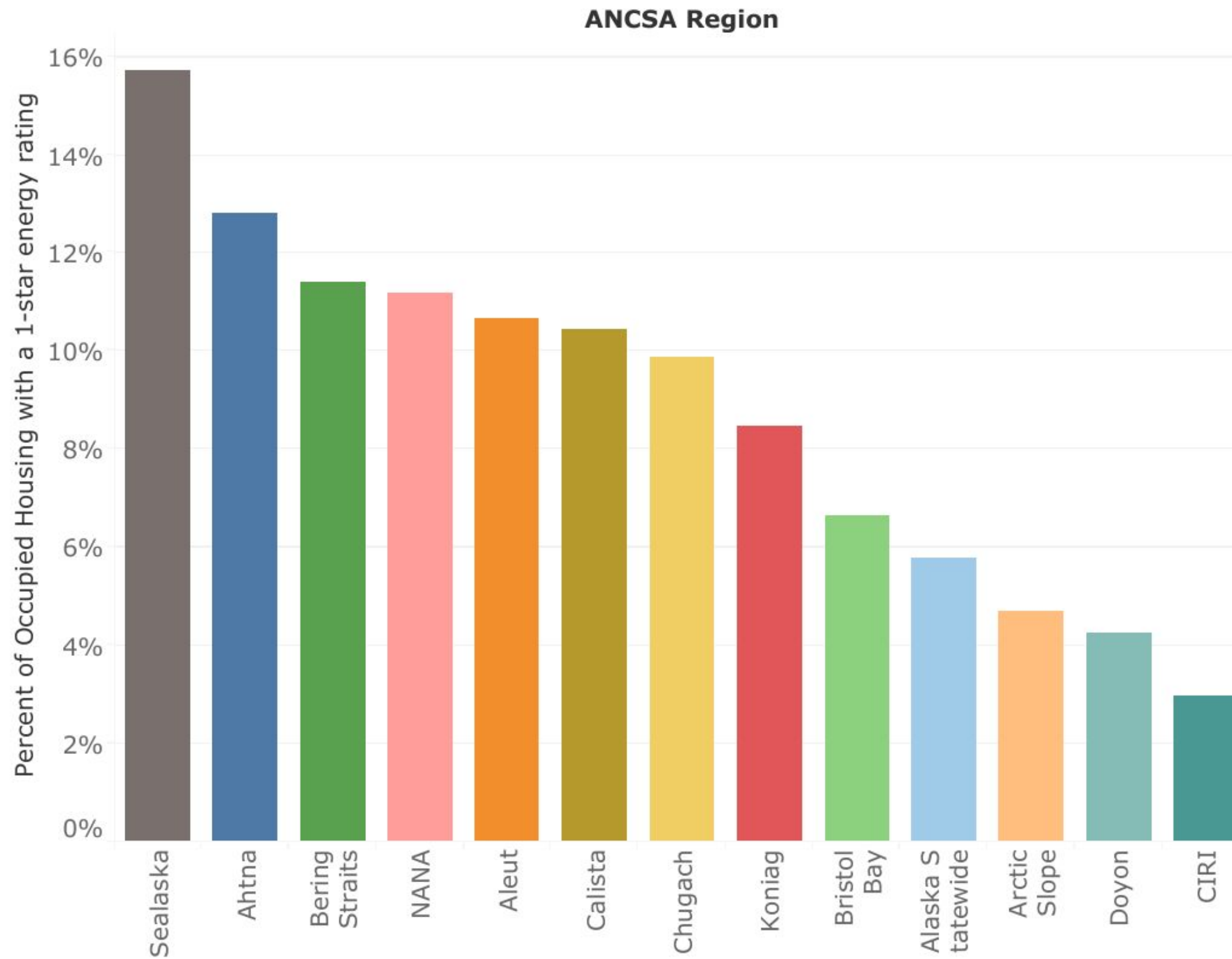
Homes lacking either a sink, refrigerator, or built-in stove are considered to have an incomplete kitchen.

Overcrowding Rates

ANCSA ..



Percent of Homes with a 1-star Energy Rating



Homes with a 1-star energy rating are the least efficient homes in Alaska, using more than four times more energy than a new home built to the current Building Energy Efficiency Standard. They tend to be the most expensive to heat and the most uncomfortable.

A way forward with data

Homeless Management Information System (HMIS)

A dark blue circle with a white border containing the text 'HMIS' in white, bold, uppercase letters.

HMIS

System Performance Measures (SPM)

A dark blue circle with a white border containing the text 'SPM' in white, bold, uppercase letters.

SPM

HUD Priorities for Data Sharing

- ✓ **Provide housing quickly to PEH who are highly vulnerable**
- ✓ **Coordinate between healthcare, homeless services and housing providers**
- ✓ **Understand the complexities of medical and social needs**
- ✓ **Identify the costliest and most vulnerable subset of high utilizers**
- ✓ **Demonstrate ROI by analyzing utilization costs vs costs of housing & services**

What's next?

- **Dept of Health data sharing pilot**
- **Upgrades in the HMIS software**
- **Stable funding for housing and homelessness services**
- **Increased collaboration between CoC, AHFC and AMHTA**



Alaska Coalition
on Housing and Homelessness

Thank you.



alaskahousing-homeless.org



owen@alaskahousing-homeless.org