

House Transportation Committee

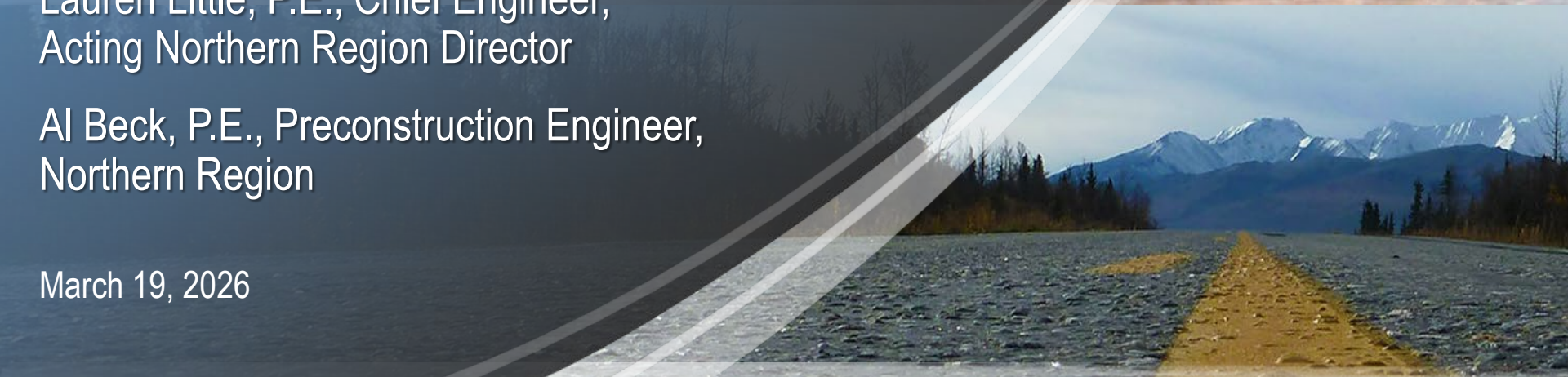
Department of Transportation & Public Facilities

Preconstruction

Lauren Little, P.E., Chief Engineer,
Acting Northern Region Director

Al Beck, P.E., Preconstruction Engineer,
Northern Region

March 19, 2026



KEEP ALASKA MOVING

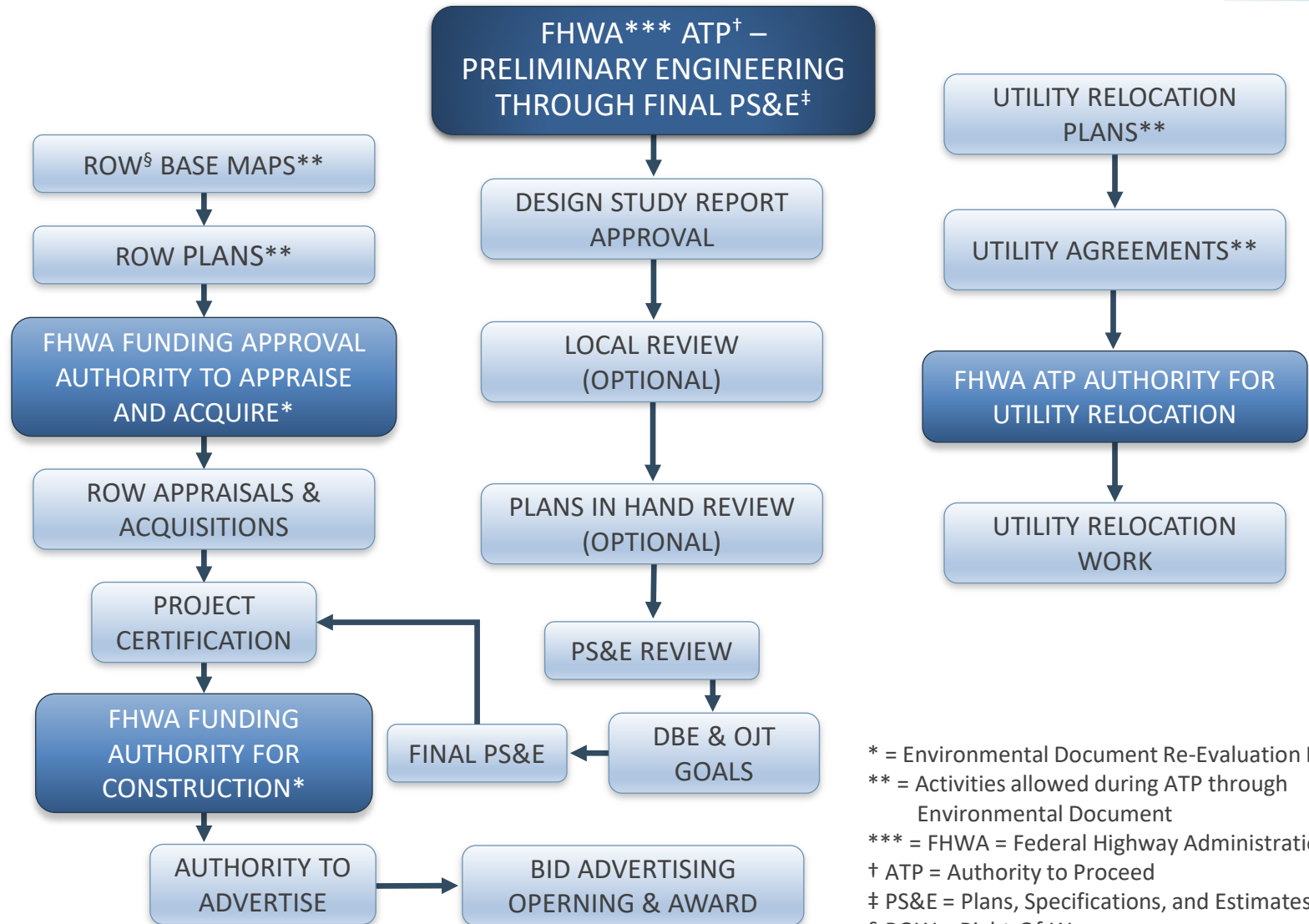
General Process Overview

SAFE • EFFICIENT • INNOVATIVE • INFRASTRUCTURE

General Project Development Process



Detailed Design



* = Environmental Document Re-Evaluation Required
 ** = Activities allowed during ATP through Environmental Document
 *** = FHWA = Federal Highway Administration
 † ATP = Authority to Proceed
 ‡ PS&E = Plans, Specifications, and Estimates
 § ROW = Right-Of-Way



Standard Bottlenecks and Roadblocks

Right-of-Way



- Property acquisition
- Negotiations
- Relocations
- Appraisals

Utilities



- Utility conflicts
- Relocation agreements
- Schedule conflicts
- Utility ROW access

Environmental / Permitting



- Federal permits
- Wetlands permits
- Section 404 permits
- Endangered species review (ESA)
- Historic review (Section 106)
- Federal & state
- Section 404 permits
- Historic review (Section 106)

Resource Constraints



- Staffing shortages
- Funding gaps
- Consultant availability

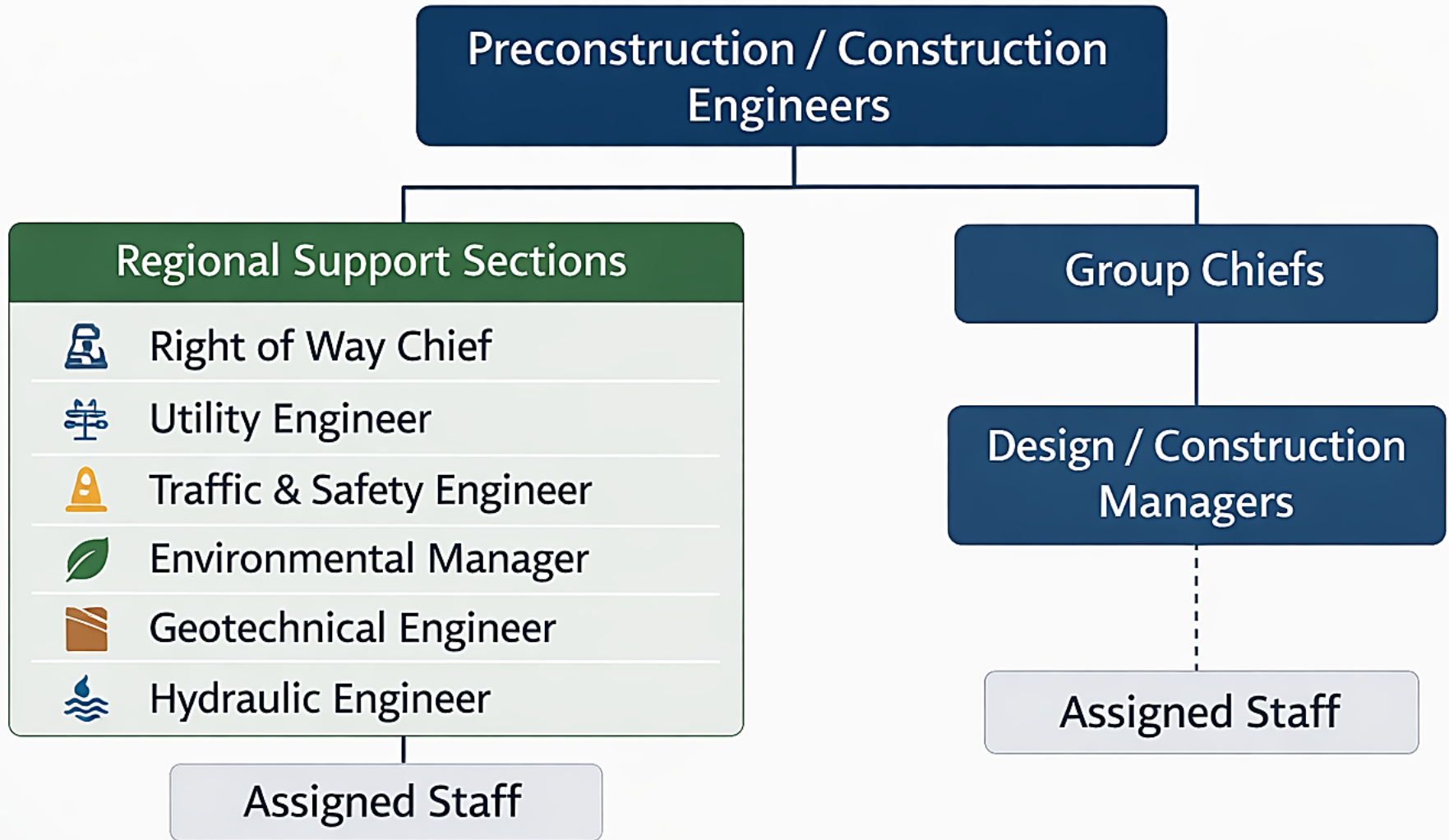
Stakeholder Views



- Community opposition
- Local politics
- Stakeholder pressure



Typical Regional Project Development Structure



Project Highlight: Badger Road Two-Way-Left-Turn-Lane (TWLTL)



	Anticipated	Actual
Construction Year	2019	2019
Project Cost	\$19,980,000	\$16,529,629
Benefit Cost Ratio	0.23 : 1	0.25 : 1
Crash Cost Reduction	29%	40%

Project Highlight: Parks 319-325 Reconstruction



- Multiple Highway Safety Improvement Program projects prior
- Stakeholder engagement
- Changes in federal expectations
- Cost estimating challenges
- Traffic management on Interstate and key freight route



Thank You.

Lauren Little, P.E., Chief Engineer,
Acting Northern Region Director

Al Beck, P.E., Preconstruction Engineer
Northern Region

Alaska Department of Transportation & Public Facilities
DOT.Commissioner@alaska.gov
Alaska 511: 511.alaska.gov



KEEP ALASKA MOVING

Cover photos by Alaska DOT&PF Staff:
Sunset departure, Anchorage International Airport. By Christopher Cummins
Alaska Range from the Richardson Highway. By Dennis Bishop
Aboard the MV LeConte sailing Lynn Canal to Juneau from Haines. By Andrea Deppner