

Investing in Alaskans

2025 ANNUAL UPDATE

Alaska Senate Resources Committee
February 14, 2025

Randy Ruaro, Executive Director



MISSION AND PURPOSE OF AIDEA

To promote, develop, and advance economic growth and diversification in Alaska by providing various means of financing and investment.

ABOUT AIDEA

ALASKA'S DEVELOPMENT FINANCE AUTHORITY

AIDEA, and the precursor to AIDEA, have been investing in Alaskans since 1961 to strengthen employment opportunities and economic development.

Be it enacted by the Legislature of the State of Alaska:

Article I

Organization of Development Corporation

Section 1. **Purpose.** The purpose of this Act is to create an instrumentality of the state to develop, stimulate, and advance the business prosperity and economic welfare of Alaska and its citizens. This shall be accomplished by providing critically needed investment capital for development loans to encourage and assist the wholesome development of new business and industry in Alaska and to rehabilitate and expand existing business and industry. By providing development loans to all types of business activity, whether of an industrial, agricultural, or recreational nature, the economic stability of the state will be strengthened, the employment opportunities of its citizens enlarged, and their standard of living and general welfare enhanced.

Senate Bill 153

Enacted by the Alaska State Legislature

Because investment capital was “critically needed” to enable jobs and enhance general welfare

Approved April 24, 1961

ABOUT AIDEA

ALASKA'S DEVELOPMENT FINANCE AUTHORITY

**Be it enacted by the Legislature
of the State of Alaska:**

Sec. 44.61.140

(a) The real and personal property of the authority and its assets, income, and receipts are declared to be property of a political subdivision of the state and together with any project financed under this chapter and a leasehold interest created in a project occupant or other person under this chapter, devoted to an essential public and governmental function and purpose, ...

House Bill 14

(4) The establishment of industrial and manufacturing plants in Alaska is essential to the development of the natural resources and the long term economic growth of the state, and will directly and indirectly alleviate unemployment in the state,

Approved April 4, 1967



AIDEA's PURPOSE

AS 44.88.010 states that:

“The legislature finds, determines, and declares that ... there exist areas of the state in which seasonal and nonseasonal unemployment exists ... this unemployment is a serious menace to the health, safety, and general welfare, not only to the people in those areas, but also to the people of the entire state. ... the state lacks basic manufacturing, industrial, ... and business enterprises ... necessary to permit adequate development of its natural resources and the balanced growth of its economy. ... establishment and expansion of [these entities] are essential to the development of its natural resources and the long-term economic growth of the state, and will directly and indirectly alleviate unemployment in the state.”

WHY WE DO WHAT WE DO



Watch this informative video: <https://bit.ly/AAPjobsHelp>

“Jobs help.
Jobs help a lot.”

-Fred Sun, Tribal President
Native Village of Shungnak



SOCIAL AND HEALTH BENEFITS OF JOBS AND COMMUNITY ACCESS

Jobs and access to communities have positive social and health benefits particularly in rural Alaska communities.

- “Suicide prevention researchers working in rural Alaska Native villages offer a number of recommendations for intervention, including enhanced occupational and educational opportunities to alleviate poverty, greater access to mental health treatment services, ...”
- “Inadequate opportunities for socioeconomic advancement were seen as major contributors to suicide, especially among Alaska Native men. ...” (Alaska Native men 400% higher suicide rate than national average)
- “Many Alaska Native communities are off the road system and often lack local providers for counseling or psychiatry services, requiring community members to travel by airplane to a distant location in order to see a physician or counselor. ... These barriers prevent people in crisis from receiving the help they need at the time they most need it.”

Citing: Beliefs about Causal Factors for Suicide in Rural Alaska Native Communities and Recommendations for Prevention, Transcult Psychiatry, 2022 February; 59(1): 78-92. Doi: 10.1177/1363461520963869

WHAT IS THE STATUS OF UNEMPLOYMENT IN THE UNITED STATES?

The formal measure of “unemployment” is misleading.

It does not measure persons who have given up looking for work.

Using “labor participation” as a measure:

- The labor participation rate is 62.5% in the United States. Meaning nearly 4 in 10 Americans have given up hope of finding a job.
- This rate is just 2.4% better than “the labor participation” during COVID years of 2020 and 2021.

[See, U.S. Bureau of Labor Statistics Charts for Economic Releases](#)

Civilian labor force participation rate, seasonally adjusted

Click and drag within the chart to zoom in on time periods

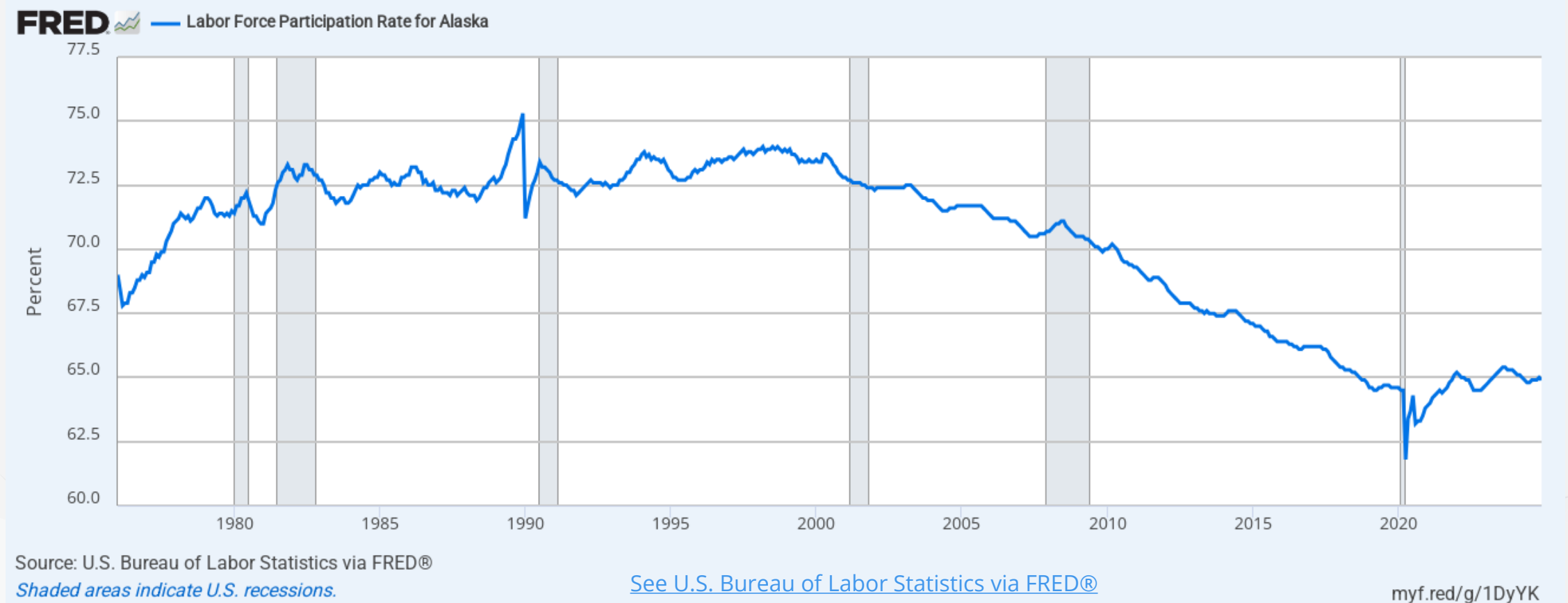


Source: U.S. Bureau of Labor Statistics.

UNEMPLOYMENT & LABOR FORCE PARTICIPATION IN ALASKA

Labor Participation Rate for Alaska

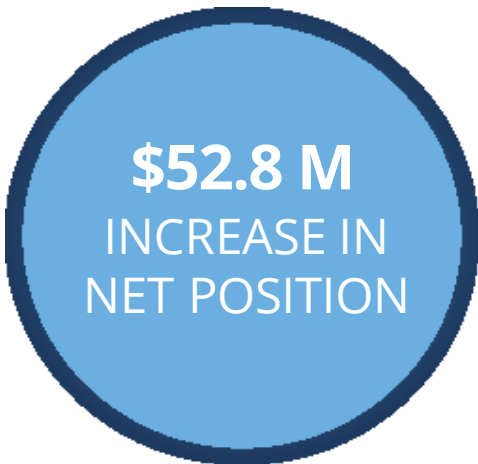
- Labor participation rate in Alaska is a little better than national average at 65%.
- Job scarcity is one reason rates are so high in rural areas.



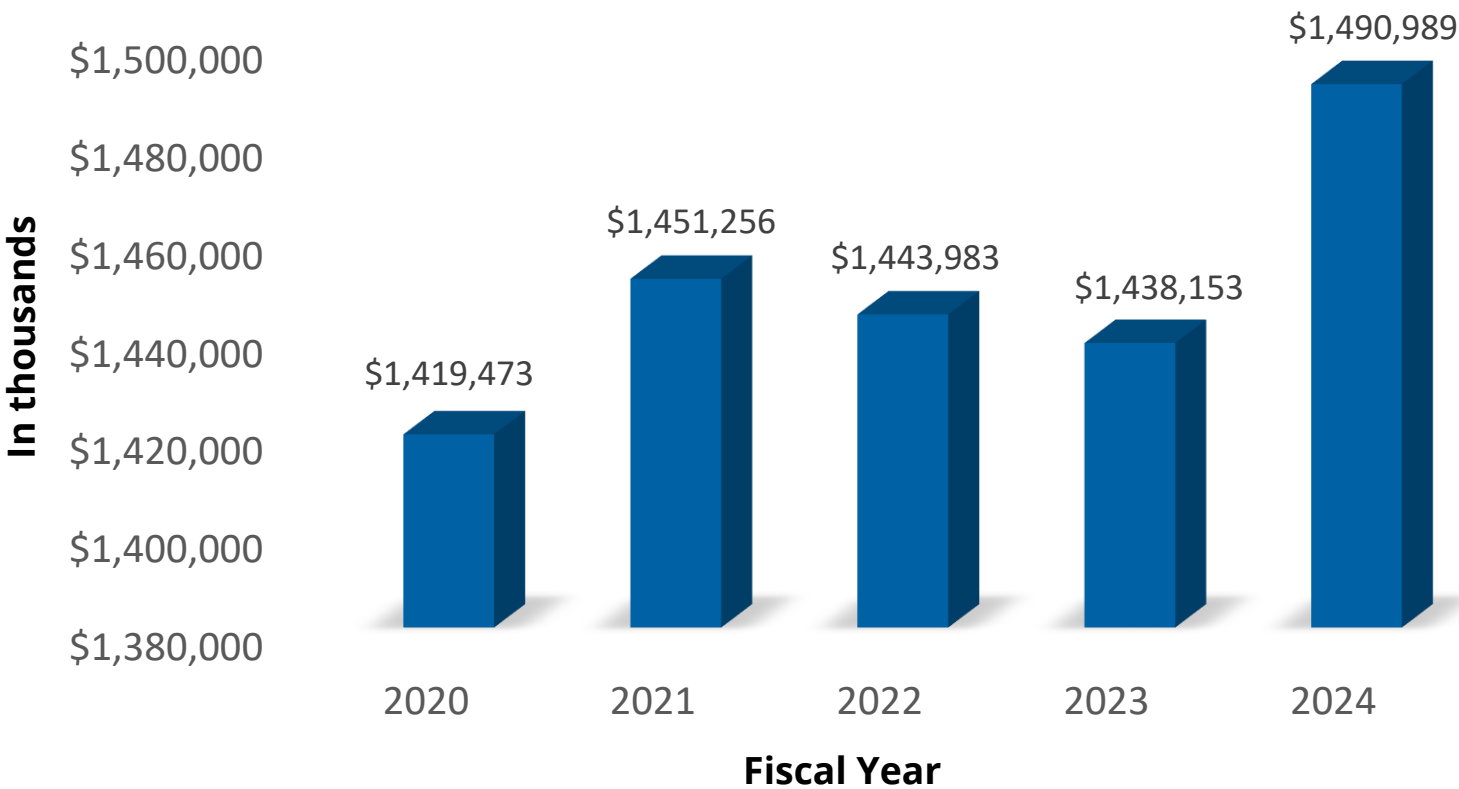
AIDEA FINANCIAL INFORMATION

AIDEA FISCAL YEAR 2024

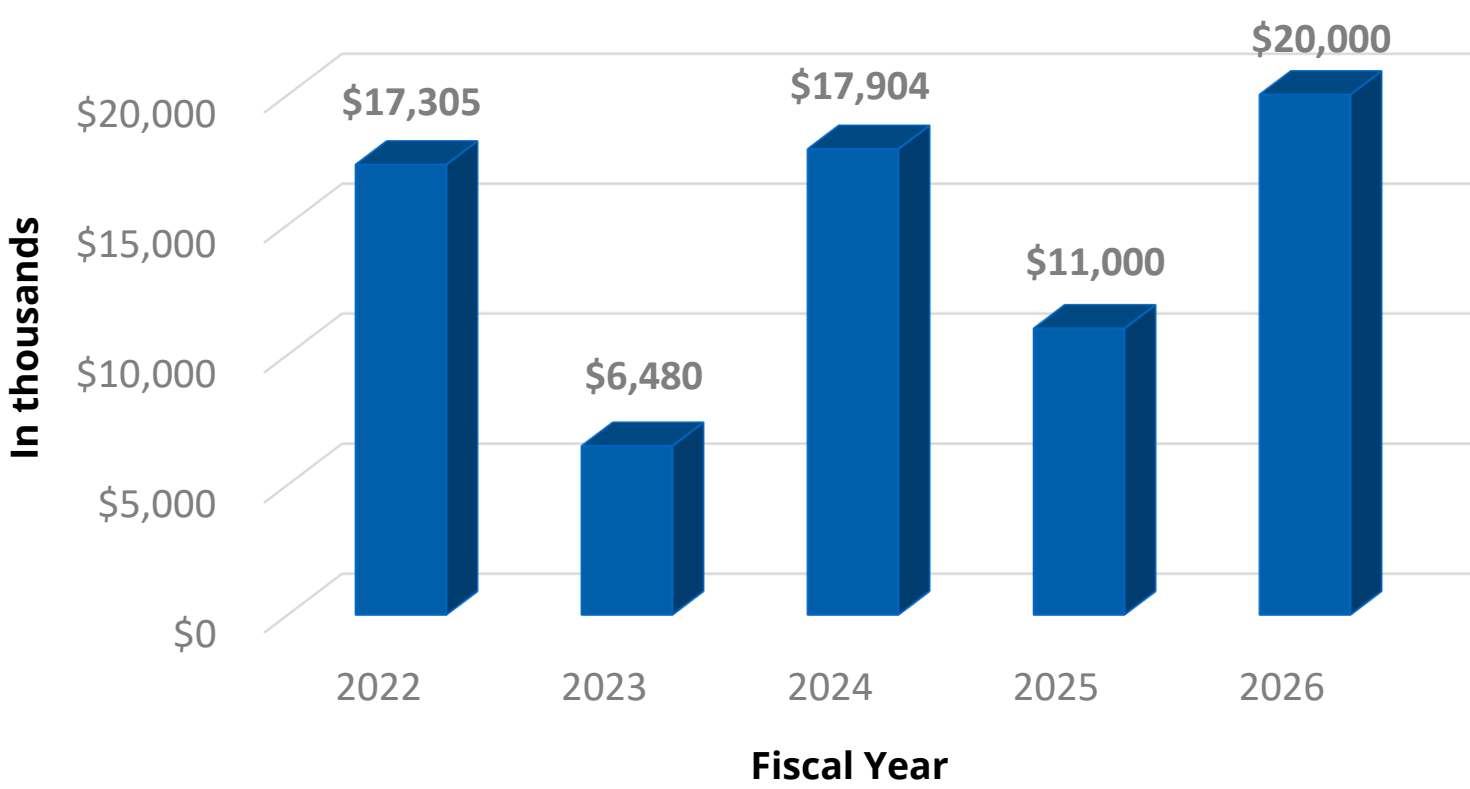
FINANCIAL HIGHLIGHTS



AIDEA NET POSITION



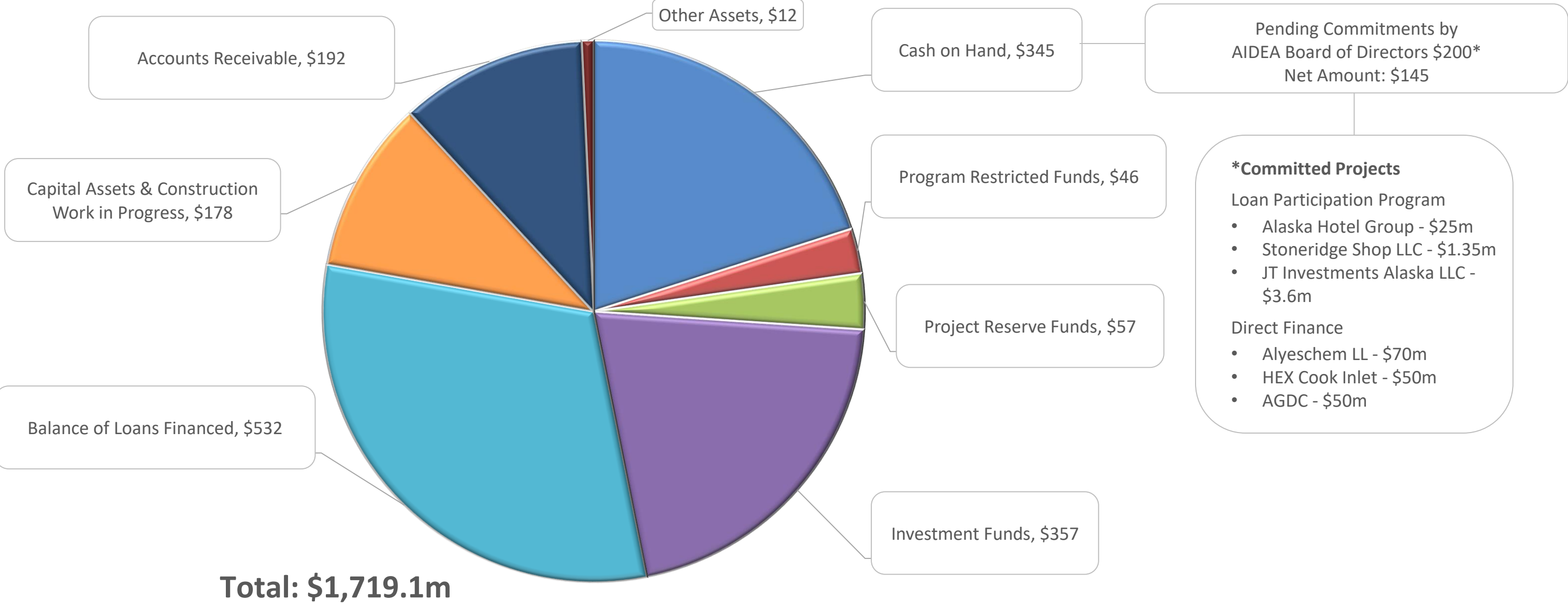
AIDEA DIVIDENDS DECLARED



AIDEA FINANCIAL FY2024 HIGHLIGHTS

AIDEA Asset Balance

as of December 31, 2024
(\$ Millions)



AIDEA's FINANCIAL TOOLBOX

AIDEA is a catalyst for economic development with a track record for success, utilizing a variety of financial tools such as:

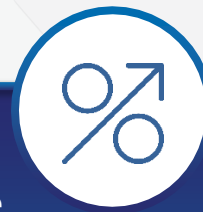
Loan Participation

The Loan Participation program provides long-term fixed and variable rate financing to Alaska's commercial businesses.



Project Finance

AIDEA can finance projects (whole or partial) through its ability to develop & own assets within the State.



Conduit Revenue Bonds

AIDEA is one of the State's Principal issuers of taxable & tax Exempt Conduit Revenue Bonds.



Energy & Resource Development

The Alaska Sustainable Energy Transmission Supply Fund, Arctic Infrastructure Development Fund, & Cook Inlet Reserve-Based Lending Program are programs within AIDEA to meet Alaska's energy resource needs.



Asset Ownership

In addition to traditional financing, AIDEA can directly own assets that generate revenue or enable economic development.



AIDEA Bonds

AIDEA has the authority to issue tax-exempt and taxable bonds.

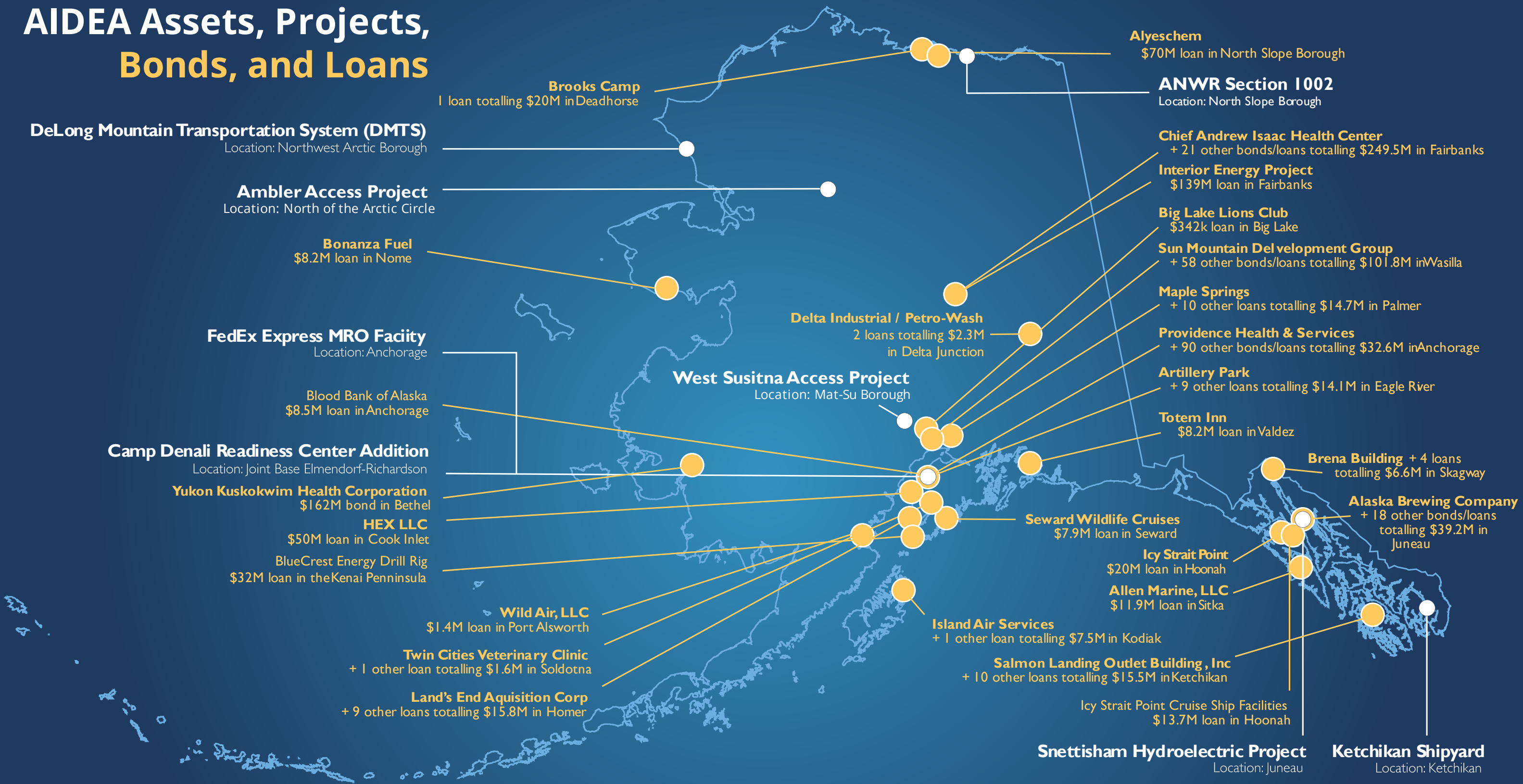


Strong Investment Relationships & Financial Expertise

AIDEA provides financial expertise and information to assist with projects, job creation, and infrastructure development.



AIDEA Assets, Projects, Bonds, and Loans



●

AIDEA Assets and Projects

●

AIDEA Bonds and Loans Funded in whole numbers
(including an example of one bond or loan and total funded in community)
\$522,059,965 in Bonds | \$488,107,252 in Loans

AIDEA PROJECTS

INNOVATIVE UTILIZATION OF NATURAL RESOURCES



Financing Approved for Alyeschem North Slope Project

- Project goal: Utilize Alaska's natural gas for economic and environmental benefits.
- Facility to produce methanol & ultra-low sulfur diesel from North Slope gas.
- Economic impact:

- 80 construction jobs and 15 permanent jobs.
- Estimated \$5M+ in annual tax & royalty revenue for the state.
- Increased demand for North Slope natural gas supports local producers.
- Environmental benefits: Cleaner-burning fuels align with global emission reduction efforts.
- Public-private partnership drives economic growth and sustainability.
- Project to break ground soon, marking a step toward energy innovation in Alaska.



RAILBELT ENERGY SOLUTIONS HEX COOK INLET LLC LEADS THE WAY



HEX CI's Financial Milestone & Strategic Investment

- Repaid its \$7.5 million AIDEA loan eight months early in 2023.
- Enabled HEX LLC's acquisition of the Kitchen Lights Unit (KLU).
- Secured energy delivery and created nearly 40 local jobs.



Meeting Alaska's Energy Needs

- AIDEA approved a \$50 million revolving credit line in late 2024.
- Plans include sidetracking underperforming wells, drilling new wells, and expanding production.
- Expected to create up to 100 temporary construction jobs and five permanent positions.



INTERIOR ENERGY PROJECT OPERATED BY IGU

- **Trailer Deployment:** All 15 large-capacity LNG trailers have been received and are now in operation.
- **LNG Plant Construction:** Harvest Midstream North Slope LNG Plant is advancing as planned and is expected to ensure a reliable gas supply for Interior Alaska.
- **Future Commitment:** IGU remains dedicated to providing affordable, clean energy while strengthening long-term operational capabilities.
- **Financial Performance:** Strong financial health with credit rating improvement through sound fiscal management and operational efficiency.
- **Operational Progress:** Steady growth in operations, financial stability, and project execution.





ALASKA GASLINE DEVELOPMENT CORPORATION AND THE ALASKA GAS PIPELINE

AUTHORITY OF AIDEA TO ISSUE A “CORPORATE GUARANTEE” TO ALASKA GASLINE DEVELOPMENT CORPORATION (AGDC) GDC / 8-STAR

- The type of credit facility AIDEA is offering is a “Corporate Guarantee”. A promise in writing in a contract with 8-Star / AGDC.
- The Corporate Guarantee in this particular case that is being discussed is both “limited” and “conditional.”
- It is “limited” to an amount “up to” a sum certain. In this case, “up to” \$50 million but really “up to” the amount and cost for Front End Engineering Design (FEED) work actually performed when a Final Investment Decision (FID) decision is made. Reason to believe significantly less, due to contingency.
- It is “conditional” because the obligation to make a payment only comes into effect if there is a decision by Glenfarne not to proceed with a go forward on the FID .
- If Glenfarne chooses to go forward with the project and a positive FID, then AIDEA pays nothing for the FEED work.
- Multiple statutes give AIDEA the legal authority to enter into a corporate guarantee contract with 8-Star / AGDC. AS 44.88.080(5); AS 44.88.080(9); AS 44.88.080(11); AS 44.88.080(13) and AS 44.88.080(17)

AUTHORITY OF AIDEA TO COMMIT AIDEA ASSETS

- Art. III, sec. 22, of the Alaska Constitution gives the Legislature the authority to create separate entities from the State of Alaska and grant these entities the authority to act and make decisions using their own resources.
- The ability of the Legislature to create AIDEA and give it an existence separate and apart from the State of Alaska and to manage and use its own assets, which are not considered assets of the State of Alaska, was decided in favor of the Legislature and AIDEA in 1962. DeArmond v. Alaska State Development Corporation, 376 P.2d 717 (1962)
- AIDEA statutes were rewritten in 1967 to expressly set out its authority and powers, including the authority to contract, spend, and use its own assets.
- AS 44.88.190(a) removes AIDEA's funds from the Executive Budget Act, except for the operating budget AS 44.88.205.

WHY NOW? WHAT IS DIFFERENT?

- **Legislature Supports “Working Toward” FEED for Phase I of a Pipeline Project** “It is the further intent of the legislature that if analysis shows a positive economic value to the state, all parties would work toward Front End Engineering and Design for Phase I of a pipeline project.”
- **Wood Mackenzie Report Shows a Positive Economic Value for Phase I** Alaska LNG can predictably deliver natural gas in a range between \$8.97 - \$12.80 per mmbtu; Alaska LNG will dramatically lower long-term energy prices; and Alaska LNG Phase I will deliver up to \$16 billion in additional economic benefits as compared to other options.
- **AIDEA Board (After Multiple Meetings) Passes Resolution G24-17** Board authorized AIDEA staff and the Executive Director to perform due diligence and if satisfied, to execute a “credit instrument, guaranty, or other form of debt issuance” to provide a backstop and allow FEED to advance.
- **President Trump** We are now in a completely “transactional” trade world. “If X, then Y”. For Japan, the “X” is a defense security agreement with the United States that does not change, protection from China, and avoiding U.S. trade tariffs. If Japan wants “X” then it must give “Y”. What is “Y”? Y is new Japanese investment in the United States which Prime Minister Ishiba said would be \$1 trillion dollars. Also, increased LNG purchases from the U.S., and a joint venture linked to Alaskan oil and gas. (Note: Since the meeting, six (6) more countries in Asia have come forward to offer to buy more LNG from the U.S. to fend off tariffs)

WHY NOW?

WHAT IS DIFFERENT? CONTINUED

- **Crisis with Gas Supply for Railbelt** According to Enstar at the recent RCA meeting (Jan. 15, 2025) and in other meetings, Alaska will experience a gas shortage. Enstar has studied all project options, and has decided to go forward with Glenfarne with an onshore import terminal. There is no way for imported gas or Cook Inlet gas – likely to be sold at a rate near the price for imported gas (\$13.72) – to get to the low \$2.32 per mmbtu price that Alaska LNG could provide via a pipeline. (Page 8, AGDC Presentation, January 28, 2025)
- **Cheap and Clean Gas from Great Bear** Publicly filed information from Great Bear shows certified contingent oil resources at 1.6 billion barrels (management thinks they can get to 3.5 billion) 6.6 TCF of gas from Kodiak, Ahpun, and Ahpun Western Topsets. And separately a possible 3.3 TCF of gas from the Magrez-1 Well and drilling. All gas available at up to 500 million cfd at a maximum price of \$1 per million btu. 20 years. Gas Sales Purchase Agreement with AGDC.
- **Gas Suppliers Proceed Without Fiscal Certainty** Current suppliers of gas such as Great Bear are not making a constitutional amendment or contract for “fiscal certainty” on gas taxes a precondition for providing gas.
- **Prudhoe Oil Loss Declining Yearly** Loss of oil production from Prudhoe as a result of gas offtake for a gas project is significantly reduced each year by the passage of time. It has been eight years since the AOGCC decision by Cathy Forrester that enough oil production had occurred, and enough gas reinjected and available for a gas project that gas offtake could occur.

AIDEA LOAN PROGRAMS

AIDEA SMALL BUSINESS LOANS DCCED MANAGED PROGRAMS



For more information on the RDIF Program, visit <https://bit.ly/AIDEArdif>

\$1.86 MILLION
FUNDED
IN FY 2024

37
JOBS CREATED
IN FY 2024


\$46.3 MILLION
APPROVED
SINCE
INCEPTION

2,392
JOBS CREATED
SINCE
INCEPTION



For more information on the SBED Program, visit <https://bit.ly/AIDEAsbed>

RURAL DEVELOPMENT INITIATIVE FUND (RDIF) PROGRAM HIGHLIGHT



DENALI ZIPLINE TOURS

Anchorage

STONEY CREEK CANOPY ADVENTURES

Owner Mark Wildermuth describes their RDIF loan as **“the best loan I have ever received,”** praising its favorable terms and long-term benefits, which made excellent business sense.

With the funding in hand, the Wildermuths launched Denali Zipline Tours with a bang, employing 15 people. The DCCED, impressed by the significant impact of the loan, noted the exceptional return on investment. Their loan created 15 Alaskan jobs, demonstrating the program’s value to the state and its residents.

Check out this video at <https://youtu.be/hmnvV0WLoao>



For information, please visit: www.denaliziplanetours.com

SMALL BUSINESS ECONOMIC DEVELOPMENT (SBED) PROGRAM HIGHLIGHT

Visit the Alaskan Outlaw Adventures website: www.alaskanoutlawadventures.com



ALASKAN
OUTLAW ADVENTURES

Dream of Alaskan Adventure, Now A Reality

Benefiting from a low-interest, long-term Small Business Economic Development Loan helped turn Brandon's childhood dream into a reality. Funding that was made possible with the SBED Program was instrumental in his ability to develop operations and create local jobs.



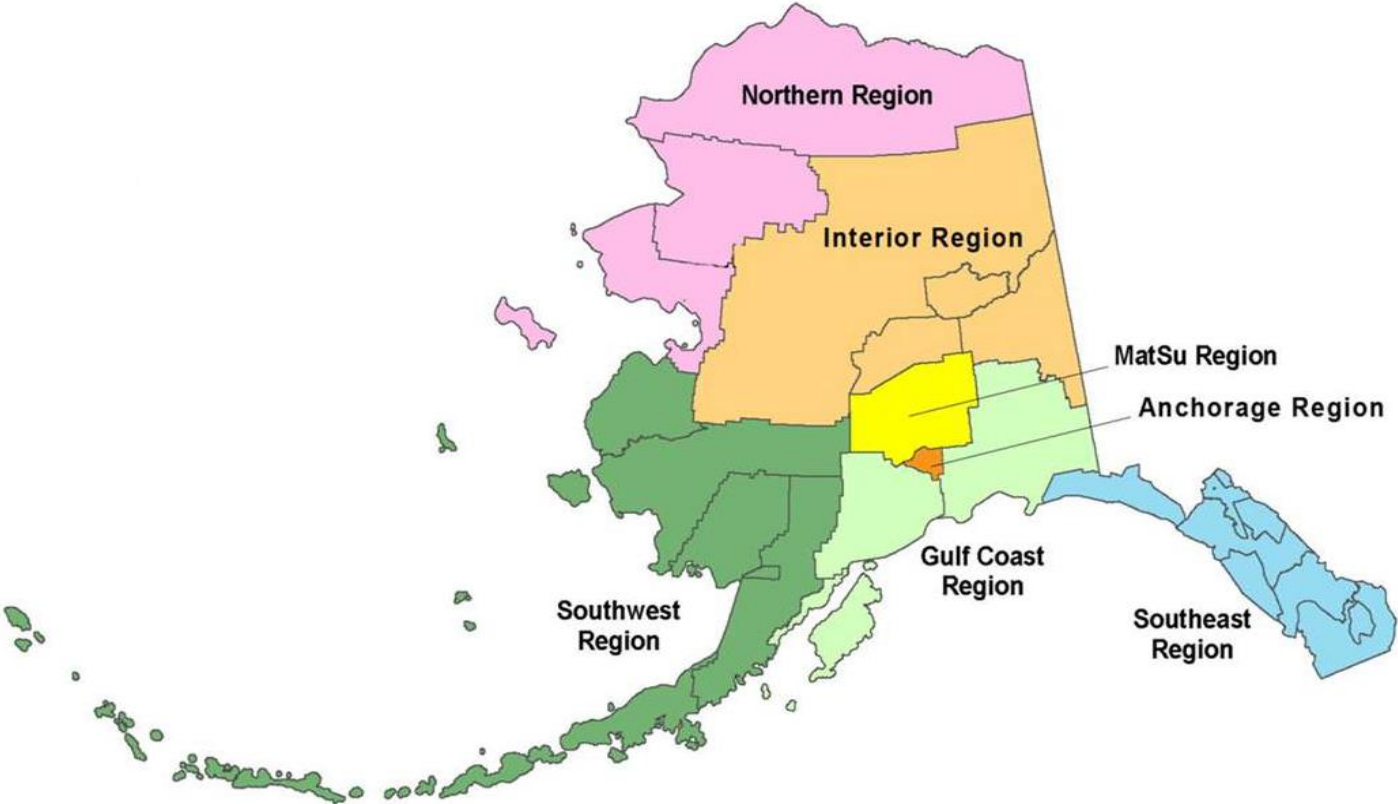
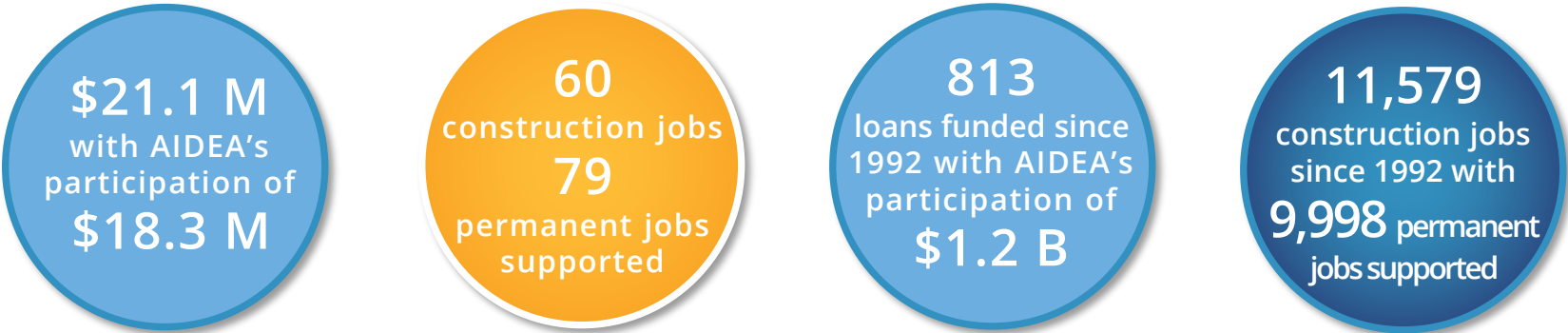
The loan not only helps to provide exceptional experiences for visitors but also ensures that local talent and resources are utilized, fostering a thriving local economy.

LOAN PARTICIPATION PROGRAM HIGHLIGHTS & REGIONAL DIVERSITY

Learn more about the
Loan Participation Program
<https://bit.ly/AIDEAlpp>



FY2024 PROGRAM HIGHLIGHTS



REGIONAL DIVERSITY OF PARTICIPATION LOANS IN WHOLE NUMBERS
OUTSTANDING BALANCES AS OF 12/31/2024

REGION	LOAN PARTICIPATIONS CURRENT MONTH END BALANCE	LOAN PARTICIPATIONS PREVIOUS MONTH END BALANCE	MONTH OVER MONTH PERCENTAGE CHANGE	CURRENT MONTH % OF TOTAL	
ANCHORAGE	\$141,531,389	\$140,686,647	0.60%	39.99%	
MATSU	\$84,225,711	\$84,488,803	-0.31%	23.80%	
SOUTHEAST	\$56,908,638	\$57,789,443	-1.52%	16.08%	
GULFCOAST	\$36,408,215	\$36,530,719	-0.34%	10.29%	
INTERIOR	\$23,231,952	\$23,406,435	-0.75%	6.56%	
NORTHERN	\$9,718,980	\$9,835,408	-1.18%	2.75%	
SOUTHWEST	\$1,922,773	\$1,935,244	-0.64%	0.54%	
STATEWIDE TOTALS	\$353,947,658	\$354,672,698	-0.20%		

* New Loans include Pending Commitments and Anticipated Fundings.
(Does not include OREO, PPF Loans, or Assumptions; Does not include Outstanding Balance to be Funded on Development Project Loans)

ALASKA WILDBIRCH HOTEL

Downtown Anchorage

Project Highlights:

- 70% AIDEA Participation
- 147 Construction Jobs
- 245 New Jobs
- \$25 million AIDEA Funding Commitment
- Loan Closing in Early 2025

Slated to open in the spring of 2025 in the heart of Anchorage's downtown Mushing District, The Wildbirch Hotel will usher in a new era for the city's hospitality scene as its first Hyatt JdV boutique property and the most significant lodging addition in two decades.

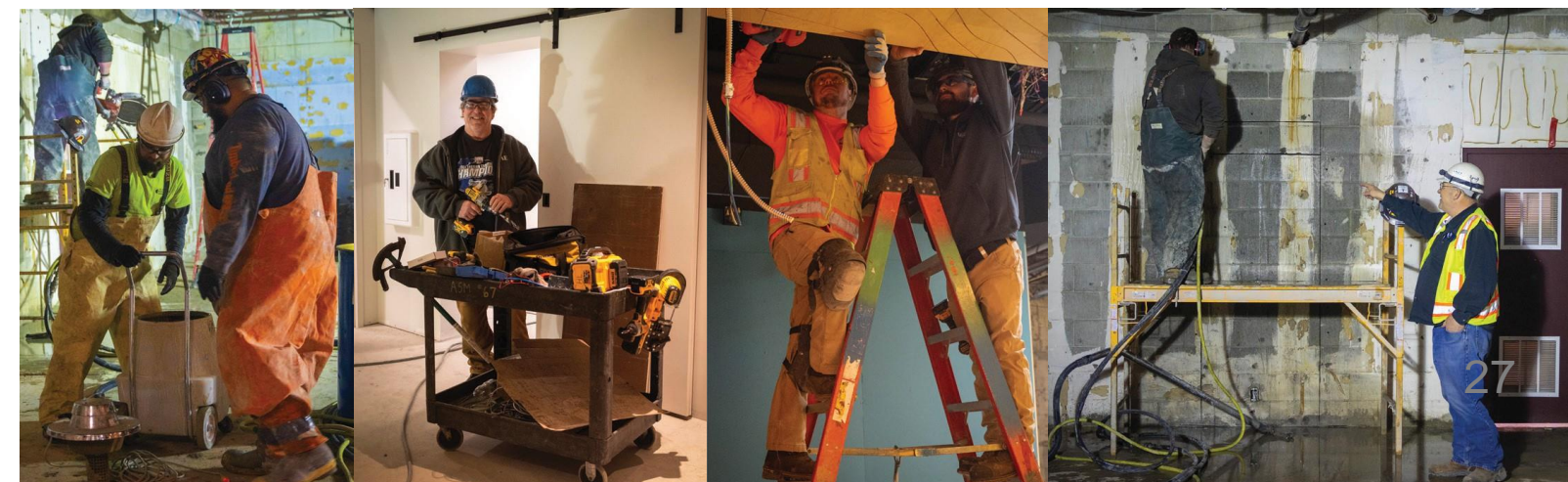
The Wildbirch Hotel is part of a broader effort to revitalize downtown Anchorage.



"When you work with AIDEA, it's not just another bank loan. Our efforts to redevelop downtown matched **AIDEA's goal of economic revitalization, job creation**, and making downtown Anchorage a better place for tourists and locals alike.

We are grateful AIDEA was willing to work with us to make the Wildbirch Hotel a reality and improve downtown Anchorage for generations to come."

- Former U.S. Senator Mark Begich



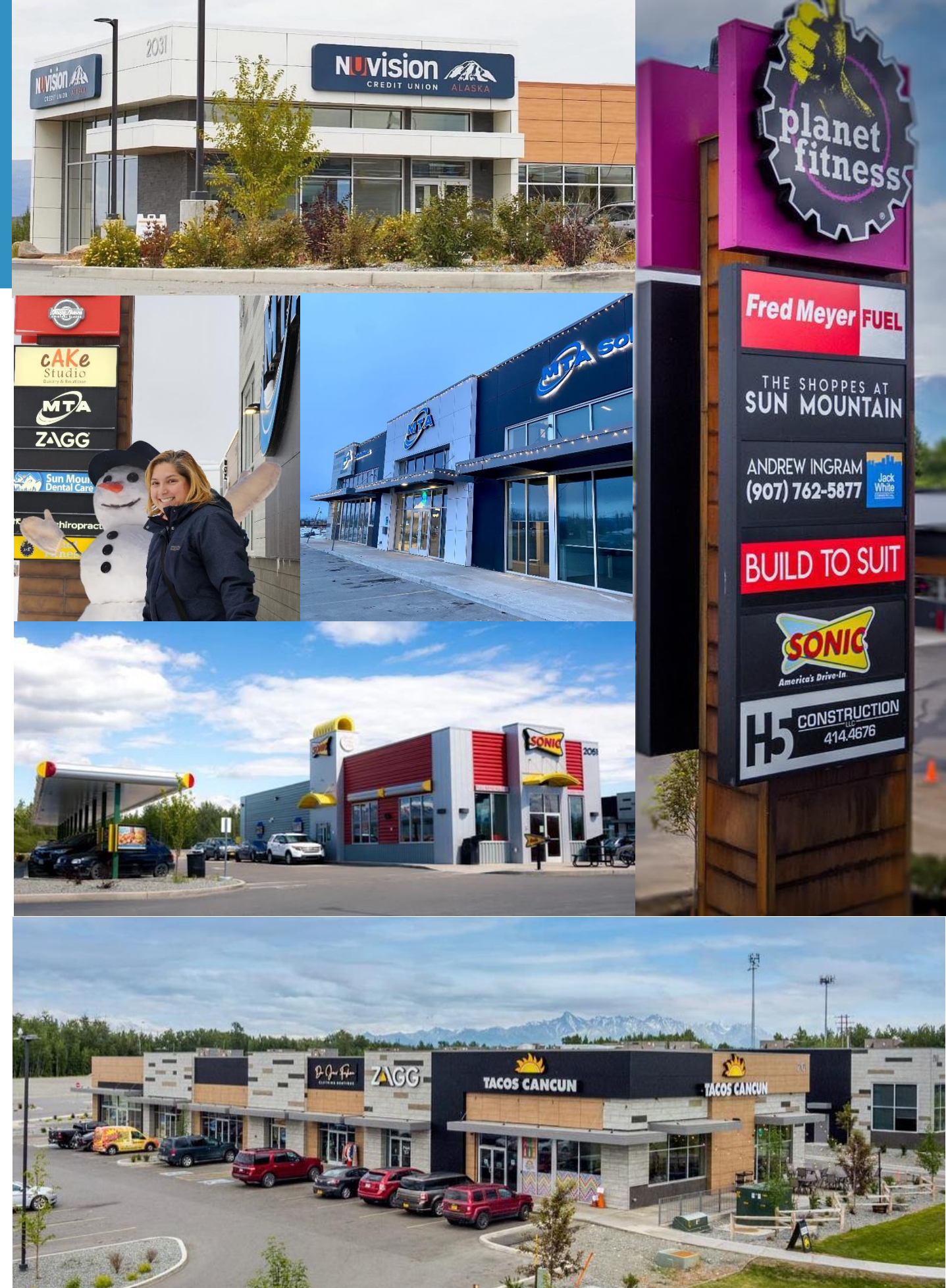
SUN MOUNTAIN DEVELOPMENT

Wasilla, Alaska

Project Highlights:

- 90% AIDEA Participation
- 554 Construction Jobs
- 284 Permanent Jobs
- Over \$15 million in AIDEA Funding

Sun Mountain is site condominium project and a significant development in the retail sector. The Shoppes at Sun Mountain are located on the Parks Highway. The development opened in August 2019, and has since attracted small businesses, larger Alaska companies, and national franchises.



GOLDEN HEART WASTE MANAGEMENT

Fairbanks, Alaska

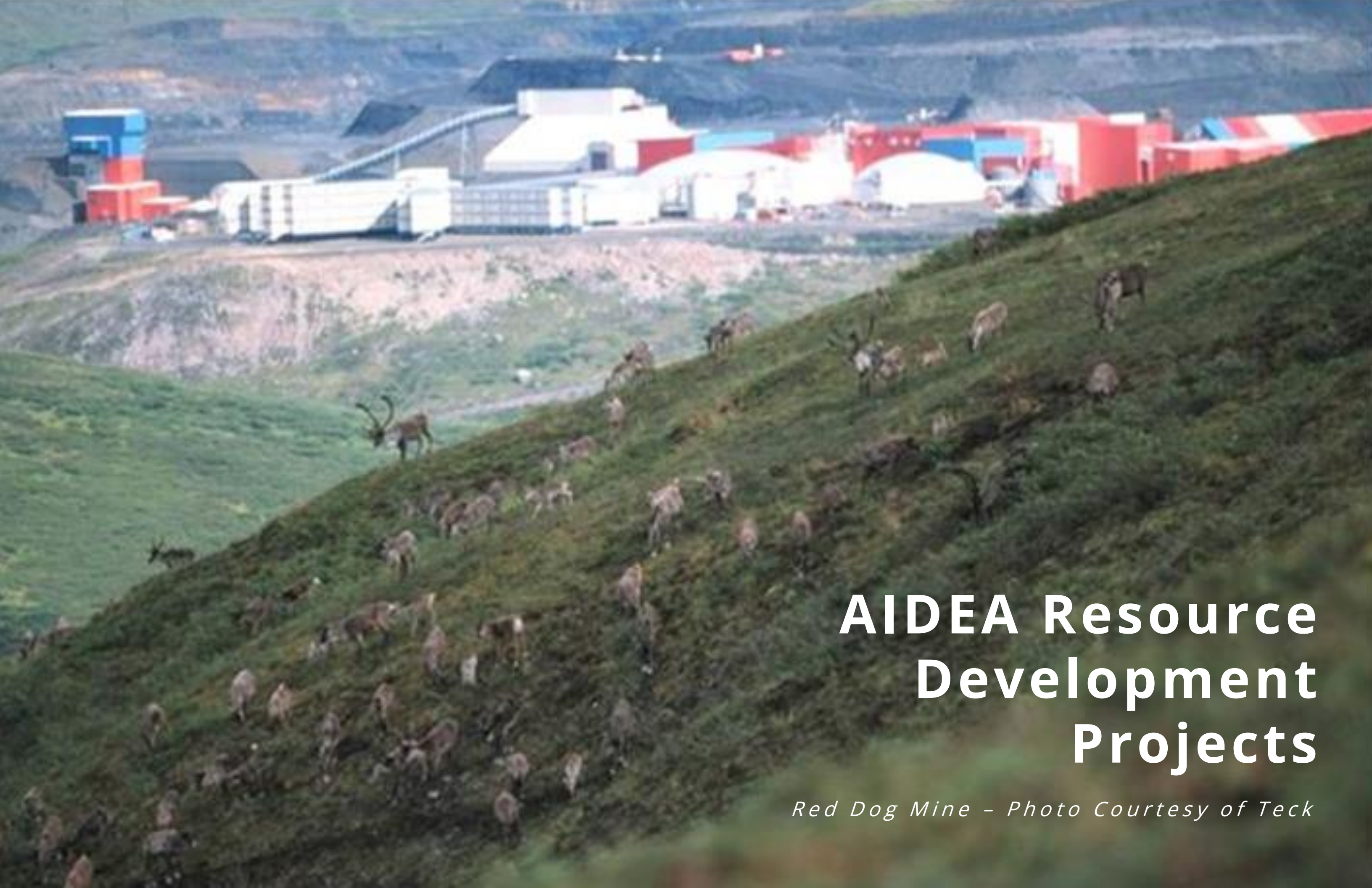
Project Highlights:

- 90% AIDEA Participation
- 10 New Jobs
- 12 Jobs Retained
- \$3.6 Million Loan Funding Commitment
- Closing in early 2025



With services that extend beyond Fairbanks, Golden Heart Waste Management has been covering areas such as Delta Junction, Tok, Ft. Greely, and Coldfoot since 2019.

This investment not only strengthens the local economy but also underscores the importance of supporting environmentally conscious businesses in Alaska.



AIDEA Resource Development Projects

Red Dog Mine - Photo Courtesy of Teck

DELONG MOUNTAIN TRANSPORTATION SYSTEM

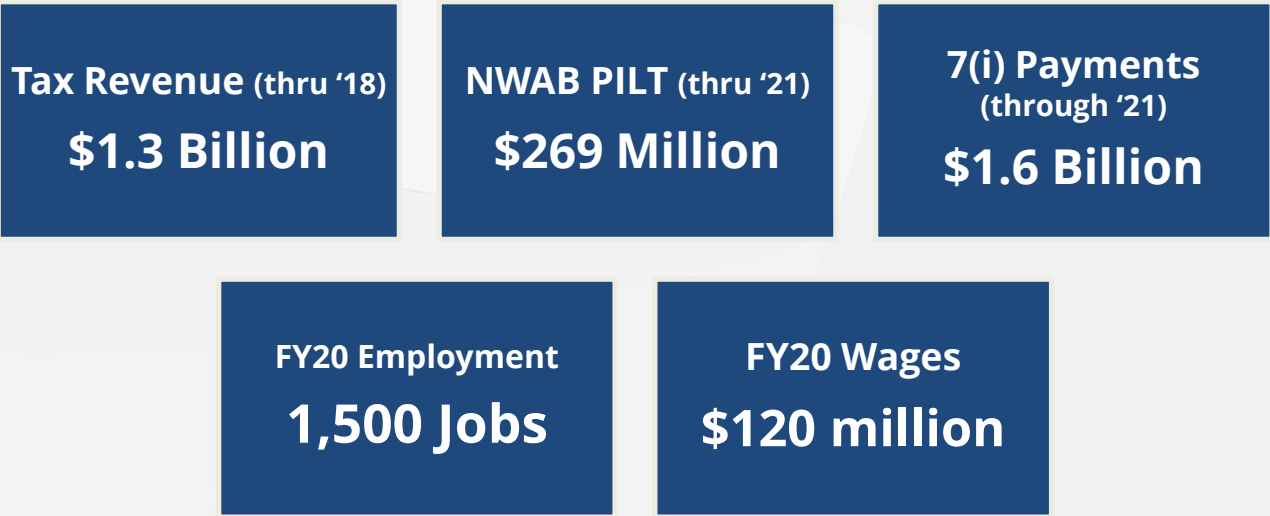
RED DOG MINE (NORTHWEST ARCTIC BOROUGH)

- AIDEA-owned asset.
- In 1985, Alaska Legislature, Governor, and AIDEA agree some public support is needed to make Red Dog go forward. After many hearings, SB 279 and SB 280 are passed by the Legislature and signed into law.
- In 1986, AIDEA funds mine, road, and port with \$160 million.
- AIDEA keeps mine operating in 1990's by funding \$85 million for expansion.
- Project provides significant economic benefits.
- Project continues to yield significant dividends for NANA (royalty of \$255 million in 2021 and shares ~60% of the royalty with other Regional Corporations).
- Future opportunities also exist (Aktigirug prospect could be one of the largest undeveloped zinc deposits in the world).



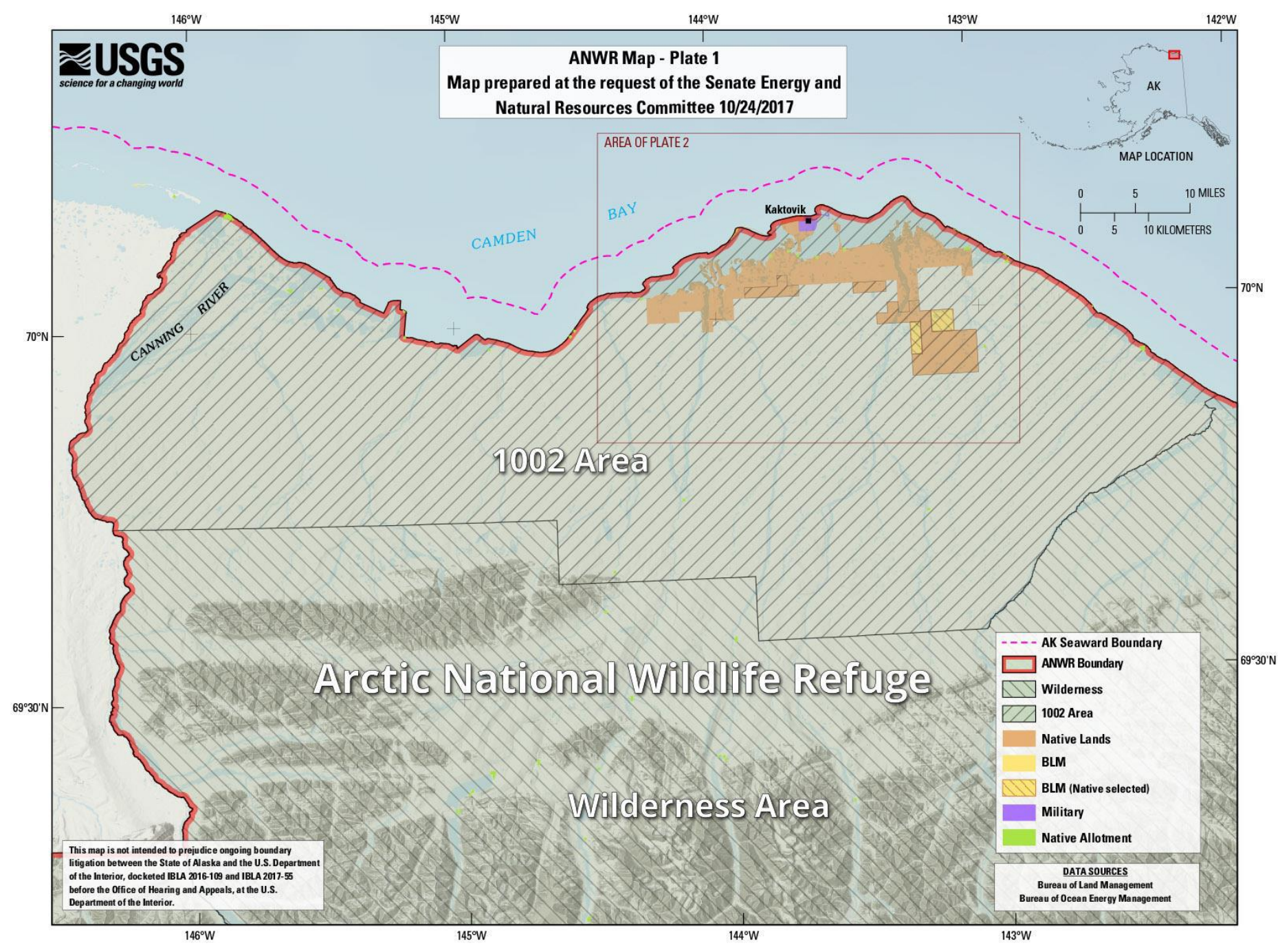
AIDEA's Return on Investment: \$296 Million

Benefits from AIDEA's Investment to the NWAB Economy



ARCTIC NATIONAL WILDLIFE REFUGE

SECTION 1002



"Kaktovik is the only community in the 1002 Coastal Plain . . . We are not an exhibit in a museum. Nor is the land that we have survived and thrived on for centuries to be locked away for the peace of mind of those from faraway places. This school of thought amounts to nothing more than green colonialism land-grabbing in the name of the environment."

- from the testimony by Fenton Rexford of Kaktovik before the House Resource Committee, March 6, 2019, 1:57 p.m.

SECTION 1002 AREA LEASES

In 2017, Congress passed the "Tax Cuts and Jobs Act," which directed the Department of the Interior (DOI) to establish and manage a competitive oil and gas leasing program in the Arctic National Wildlife Refuge (ANWR). The Coastal Plain, often referred to as the 1002 Area, comprises 1.56 million acres within the 19.64 million-acre ANWR. AIDEA's leases cover 0.37 acres.

Development of the 1002 Coastal Plain holds significant potential for economic growth. According to the Final Supplemental Environmental Impact Statement (SEIS), leasing and development could generate billions of dollars in revenue for local, state, and federal governments while creating thousands of jobs.

ARCTIC NATIONAL WILDLIFE REFUGE

SECTION 1002

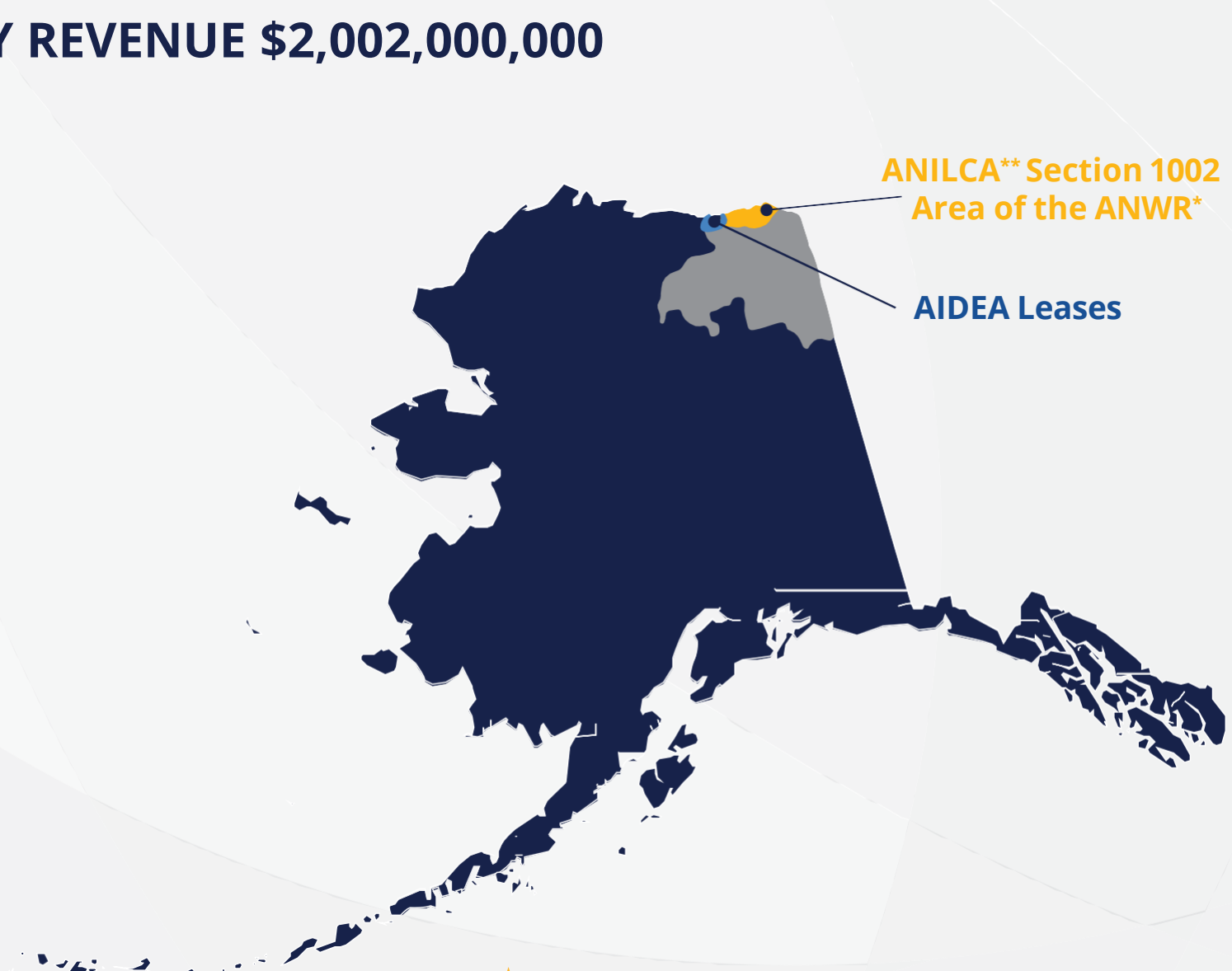
★ **ESTIMATED STATE ANNUAL TAX AND ROYALTY REVENUE \$2,002,000,000**

Government Revenues (in Millions of 2017 Dollars)	Annual Average	Total
North Slope Borough property taxes	\$49	\$1,119
State of Alaska royalties	\$782	\$15,648
State of Alaska taxes	\$1,220	\$24,425
Federal royalties	\$782	\$15,648
Federal taxes	\$673	\$13,459

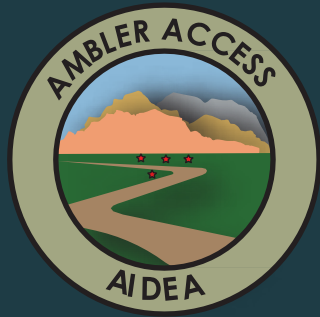
Source: Northern Economics, Inc. 2023 estimate.

Effects	Estimated jobs (average number of part- time and full-time jobs)	Annual Average	Peak
Direct	Exploration	250	650
	Development	2,260	3,300
	Production	770	1,200
Indirect	Exploration	130	390
	Development	1,720	2,500
	Production	1,020	1,600

Table C-8 of the Coastal Plain Oil and Gas Leasing Program Final Supplemental Environmental Impact Statemen, Volume 3t. (Source: Northern Economics, Inc. 2023 estimates based on IMPLAN 2021 data year and assumptions listed in Section 3.4.10 Economy of the Supplemental EIS for the Coastal Plain Oil and Gas Leasing Program.)



★ **RECOVERABLE OIL ON AIDEA LEASES HAS AN ESTIMATED VOLUME OF 4 TO 6 BILLION BARRELS**



AMBLER ACCESS PROJECT

ACCESS TO OPPORTUNITIES DENIED BY BIDEN ADMINISTRATION

AAP Field crews preparing for departure- Bornite Camp



ESTIMATED TOTAL TAX AND ROYALTY REVENUE \$1,144,785,127

Potential Benefits

Mine Construction

- 2,777 direct jobs with \$286 million in wages annually
- 2,034 additional indirect and induced jobs with \$108 million in wages annually

Mining Operations

- 495 direct jobs with \$72 million in wages annually
- 3,436 additional indirect and induced jobs with \$228 million in wages annually

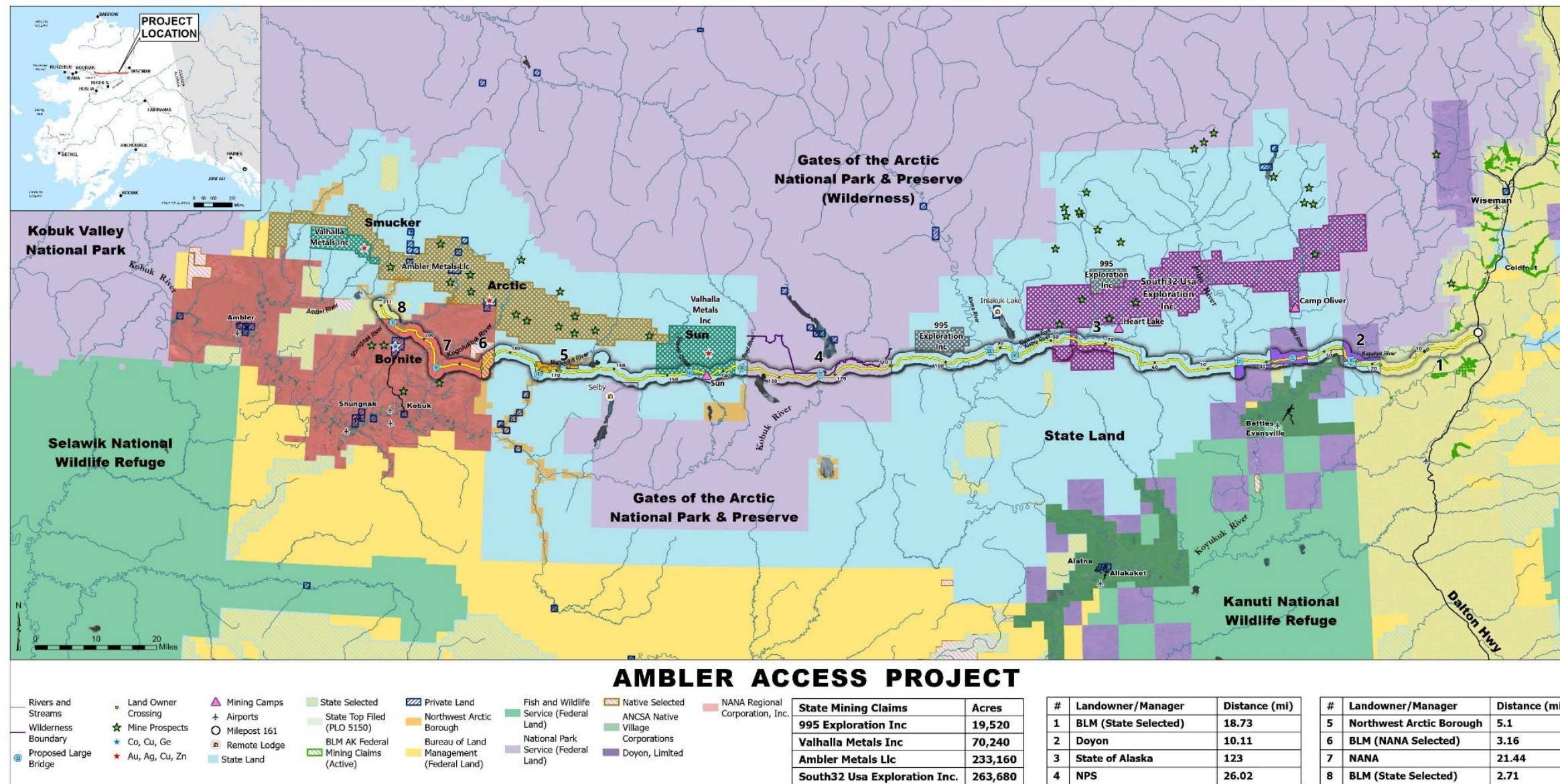
Road Construction and Operations

- An annual average of 360 direct jobs over the road construction period
- Up to 81 direct annual jobs for road operations and maintenance over the life of the road

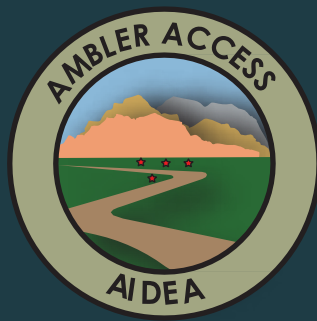
Government Revenue Generation

- \$393 million in mining license tax revenues
- \$524 million in corporate income taxes
- \$214 million in production royalties
- \$13 million in claim rents

Source: [UAA CED \(Page 17\)](#)



This 211-mile road project will provide access to almost 600,000 acres of active State mining claims. Starting from the Dalton Highway, it would stretch east towards the Ambler Mining District.



AMBLER ACCESS PROJECT

ACCESS TO OPPORTUNITIES
DENIED BY BIDEN ADMINISTRATION



Watch this informative video: <https://bit.ly/AAPthanWhat>

Learn more about this project at

www.ambleraccess.org



“If not resource
development,
then what?”

-Fred Sun, Tribal President
Native Village of Shungnak



From left to right: Representative Kevin McCabe, Todd Smoldon, Dana Pruhs, Robyn Reyes, Senator Mike Shower, Randy Ruaro, Logan Boyce, Andrew Traxler, Josie Wilson, Kurt Parkan, Hans Hoffman, Mike Brown, and Cindi Herman (top)



AIDEA West Susitna Access Project:
<https://bit.ly/WSAPdev>



Map of the West Susitna Access Project area, showing the project route from the beginning of the Little Susitna River boat launch access road to the end of the project near Whiskey Grove. The map includes various landmarks such as Happy River Bridge, Shell Creek Bridge, Skwentna River Bridge, Upper 3 Mile Creek Bridge, Bear Creek Bridge, Wolverine Creek Bridge, Alexander Creek Bridge, and Susitna River Bridge. It also shows the locations of several lodges and a potential alternative DOT&P/AIDEA terminus. The map is overlaid with a grid and color-coded areas.



36

AIDEA – NEW ISSUES AND OPPORTUNITIES

AIDEA – NEW ISSUES AND OPPORTUNITIES

- **Tech sector, Artificial Intelligence (AI) Data Centers**
- **Chemical production from natural gas (Alyeschem, etc.)**
- **Critical mineral/ore production refining (Antimony, etc.)**



Thank you for your support of AIDEA's services and programs.

**Together we are enabling long-term jobs
and economic opportunities for Alaskans.**



www.aidea.org

**813 W Northern Lights Blvd Anchorage, Alaska 99503
(907) 771-3000 Phone | (907) 771-3044 Fax**

**Join us on social media at
<https://bit.ly/AIDEAAK>**

