

**Sitka Landslide Risk**

Weather advisory [LINK](#)

**Current risk**  
**⚠️ Medium**

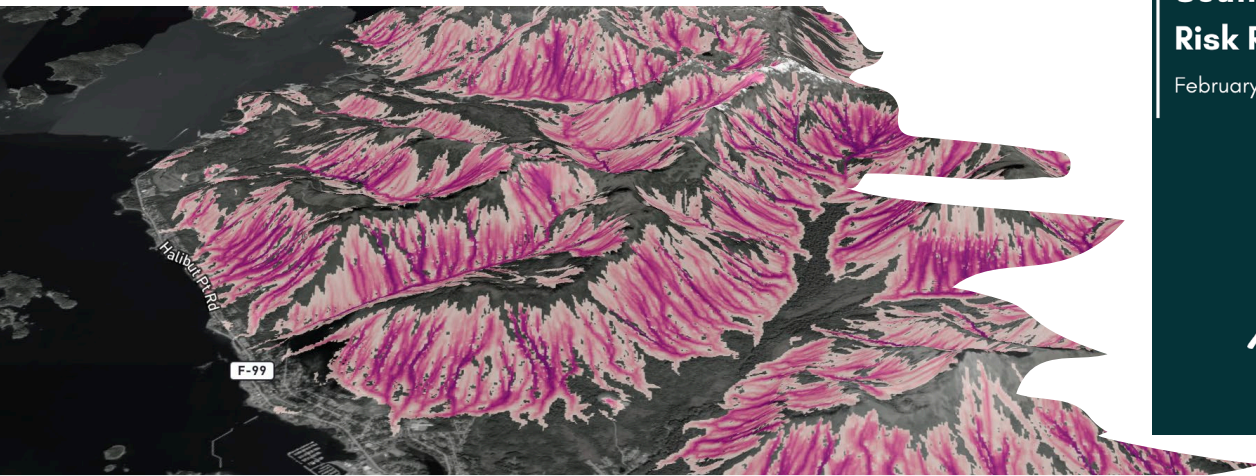
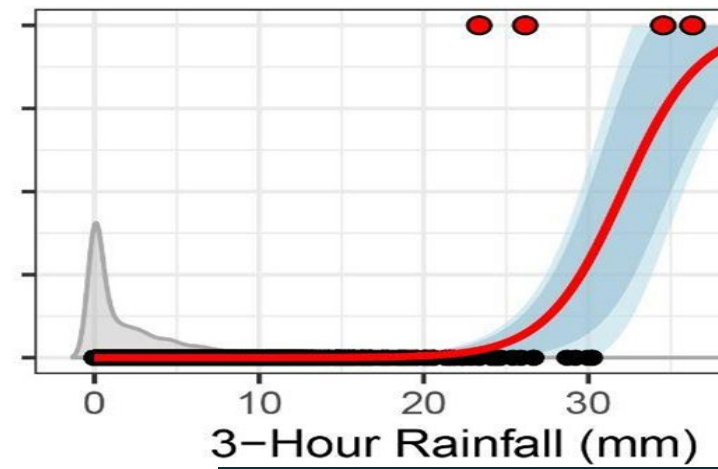
**Recommended actions:**

- Review emergency plans
- Find your "go bag" with emergency supplies
- Consider leaving landslide-exposed areas

**24 hour forecast**  
 ⚠️ Sitka will experience medium landslide risk within the next 24 hours. [How to prepare](#)

**3 day forecast**

Today	⚠️ Medium	+
Sunday	✅ Low	+
Monday	✅ Low	+



**Southeast Alaska Landslide Risk Reduction Strategic Plan**  
 February 2026

Page 1 / 31

# LUNCH AND LEARN: LANDSLIDES and the LEGISLATURE

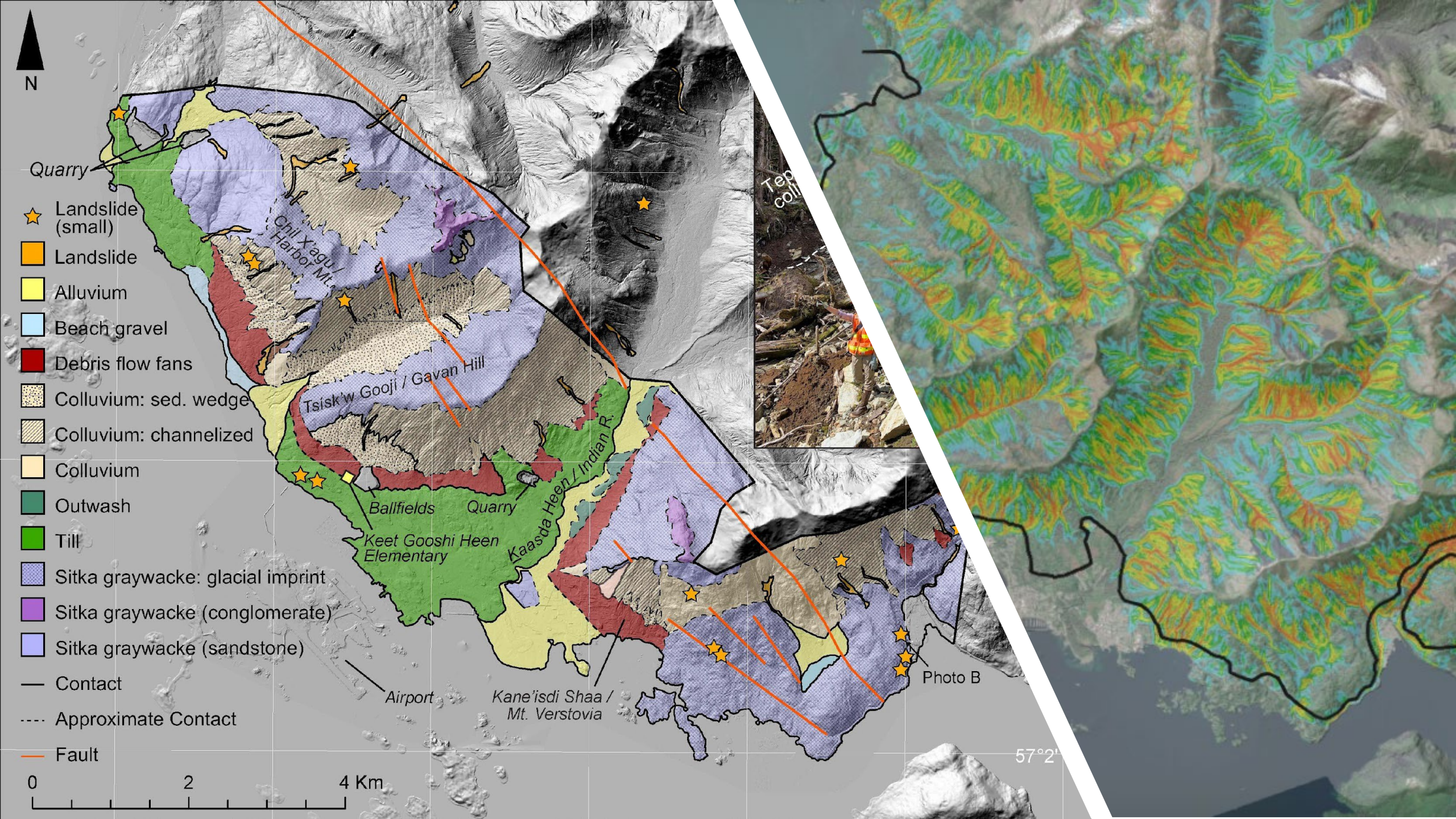




SITKA: 3 lives lost







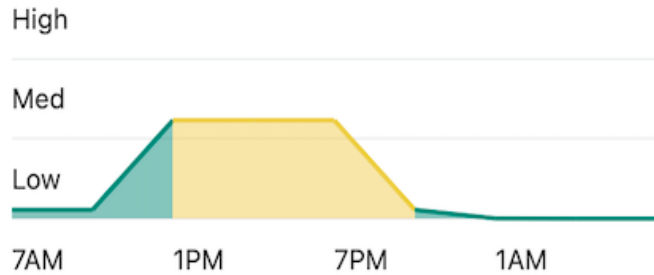


Current risk

✓ **Low** >

24 hour forecast

⚠ Sitka will experience medium landslide risk within the next 24 hours. [How to prepare](#)



3 day forecast

Today	<span>⚠</span> Medium	+
Thursday	<span>✓</span> Low	+
Friday	<span>✓</span> Low	+



i Weather advisory LINK

Current risk

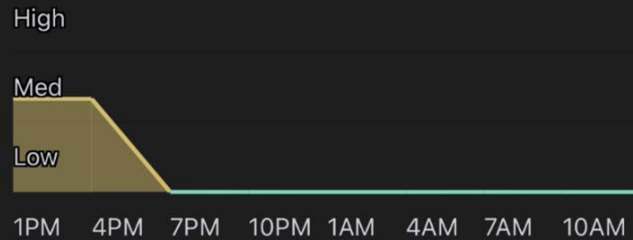
⚠ **Medium** >

Recommended actions:

- Review emergency plans
- Find your "go bag" with emergency supplies
- Consider leaving landslide-exposed areas

24 hour forecast

⚠ Sitka will experience medium landslide risk within the next 24 hours. [How to prepare](#)



3 day forecast

Today	<span>⚠</span> Medium	+
Sunday	<span>✓</span> Low	+
Monday	<span>✓</span> Low	+



✓ Low risk of landslide now

24 hour forecast

✓ Low risk for the next 24 hours. [Show chart](#)

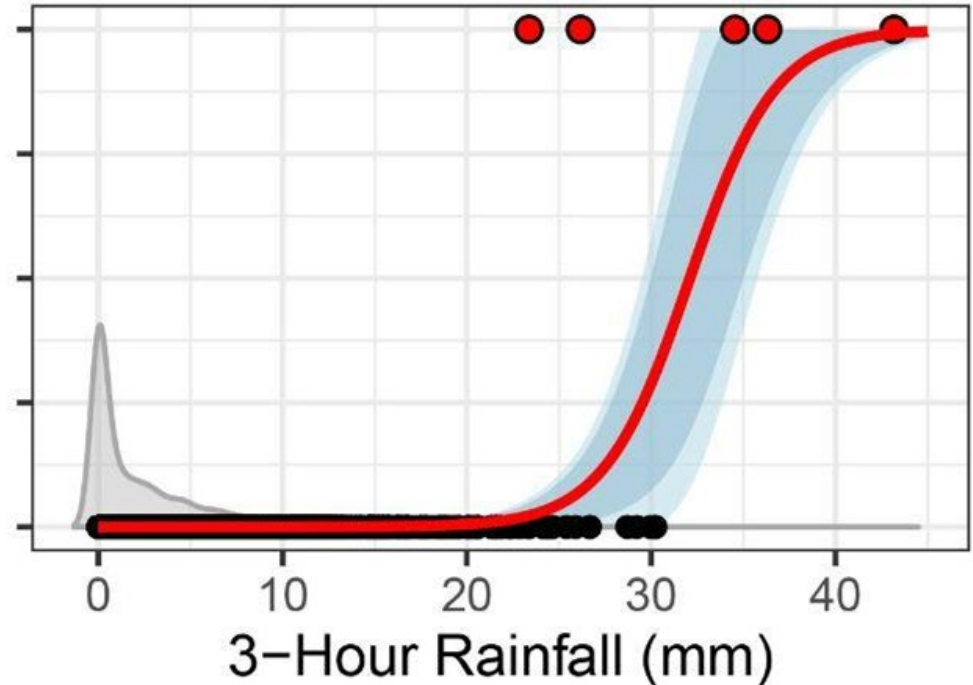
3 day forecast

Today	<span>✓</span> Low	+
Friday	<span>✓</span> Low	+
Saturday	<span>✓</span> Low	+

Last updated 5 minutes ago with data from [National Weather Service](#)

Understanding risk

- ⚠ **High** Multiple landslides are very likely to occur in the Sitka area. There have been three storms in the last 20 years with similarly intense rainfall, and all three of them initiated multiple landslides.
- ⚠ **Medium** Landslides are possible. Isolated landslides have occurred in Sitka with similarly intense rainfall in the past.
- ✓ **Low** Landslides are unlikely based on historic observations in the last 20 years. Rainfall-induced landslides have not been documented for these rainfall





**HAINES: 3 Lives Lost**



**WRANGELL: 6 Lives Lost**



**KETCHIKAN: 1 Life Lost**



## **Kutí: Tlingít word for Weather**

- NSF-Funded 5-year project (final 1 year) to address geohazards caused by extreme precipitation across 6 communities in Southeast Alaska.
- The research and products of Kutí are steered by partners at local Tribal governments and the project is collaboratively overseen by SSSC and Central Council Tlingit and Haida



# What is Kutí?

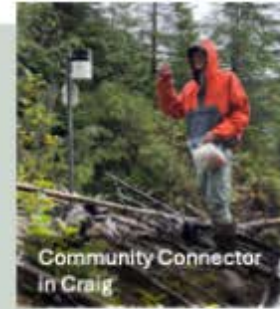
*Community  
potluck  
meetings*



**LEARN and SHARE with  
COMMUNITY  
GATHERINGS**

**SUPPORT  
RELEVANT LOCAL  
MEASUREMENTS**

*Rain gauge  
landscape study*



*Community Connector  
in Craig*

*Engagement*   *Co-design  
process*   *Research*

**BUILD TOOLS for  
COMMUNITY  
RESILIENCE**

**CREATE  
OPPORTUNITIES for  
LOCAL YOUTH**



*AYS on a  
landslide near  
Klawock*



*Geohazard dashboard  
development for Prince  
of Wales*

***Link to Kutí  
approach:***



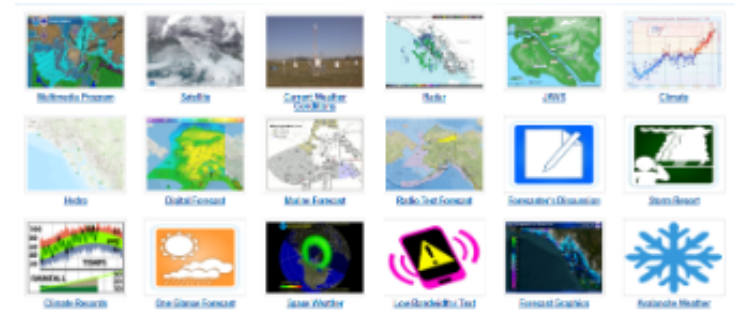
*Alaska Youth Stewards  
(AYS) safety training and  
workforce development*

# Tools Available to the Public from NWS to Assess Risk

[WWW.WEATHER.GOV/JUNEAU](http://WWW.WEATHER.GOV/JUNEAU)

NWS Juneau web page is the public's first stop to see if there is a risk of impacts from hazardous weather/hydrologic conditions.

- provides easier access to information on the main page
  - top of the web page (TOP NEWS)
  - color coded hazard maps(with readouts of headline)
  - Color coded outlook maps and potential hazards



**NATIONAL WEATHER SERVICE**  
NATIONAL OCEANIC AND ATMOSPHERIC ADMINISTRATION

Local forecast by "City, ST" or ZIP code  
Enter location: [ ] Go  
[Location Help](#)

**Flood Watches** are in effect from through Saturday evening for the northern panhandle & until Monday morning for the south. Flood Advisories are in effect for the Juneau area & Hoonah for ponding around roadways, & around Ketchikan's Ward Lake...

An atmospheric river will continue to impact the panhandle into Monday, bringing heavy rain, as well as quickly rising freezing levels. Flooding remains a concern due the heavy rainfall, abundant snowmelt, & clogged storm drains & ditches. Additionally, strong wind gusts across the Outer Coast & southern panhandle with the heavy rainfall may possibly increase the risk for isolated landslides. [Read More >](#)

**NWS Forecast Office : Juneau, AK**  
Weather.gov - Juneau, AK

Current Hazards | Current Conditions | Radar | Forecasts | Rivers and Lakes | Climate and Past Weather | Local Programs

Juneau, AK  
Weather Forecast Office

AKZ326 (Panic of) Ullas Island  
HIGH WIND WATCH REMAINS IN EFFECT FROM TUESDAY AFTN THROUGH WEDNESDAY LATE EVENING NIGHT  
Special Weather Statement: ANOTHER PERIOD OF HEAVY RAIN FOR TUESDAY INTO TUESDAY NIGHT

Winter Storm Warning - Petersburg	Winter Weather Advisories	Winter Storm Warning - Hyder	Cold Weather Advisory - Kondike Highway
5-Day Outlook	Highs Today	Lows Tonight	Precipitation Chances

**5-Day Outlook for SE AK**  
March 1st to March 5th

NWS Juneau

Sun Mon Tue Wed Thu

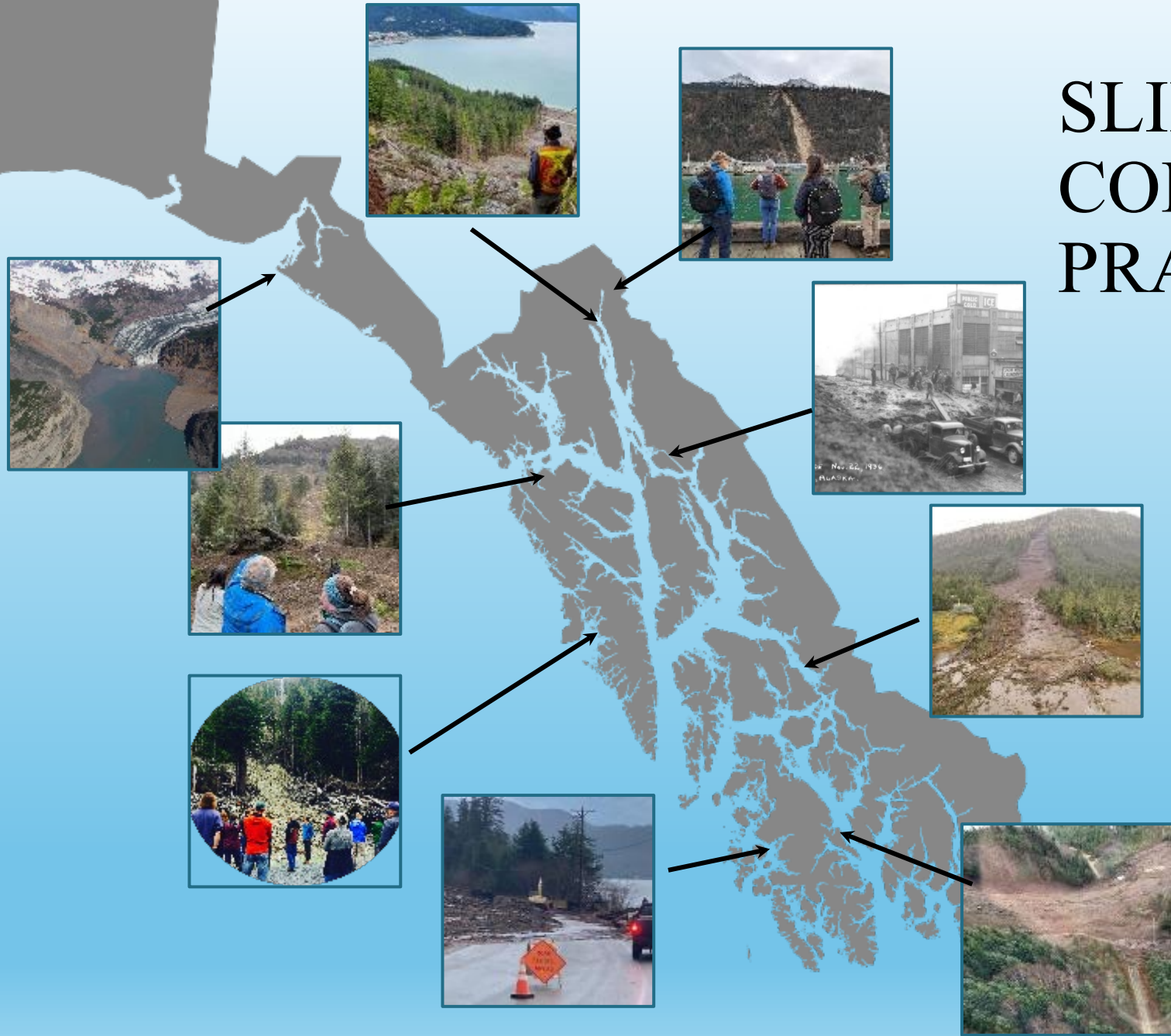
- A series of systems will continue to track into SE AK through the 5 day period.
- Moderate to heavy snow continues into Sunday.
- Precipitation becomes rain across the far S panhandle whereas snow is expected to continue across the central and N panhandle into the work week.
- Another impactful system enters the gulf Tuesday bringing moderate rain to the S and more snow for the N.
- Temperatures warm Wednesday and Thursday, but active weather remains over the area.

Impact Color: ● Design ● Minor ● Moderate ● Major

Issued: 2/28/2026 1:00 PM AKST

# SLIPP is a COMMUNITY OF PRACTICE

SLIPP's mission is to reduce the risk of landslide disasters in Southeast Alaska by sharing and coordinating local knowledge, current research and mitigation through communication, advocacy, engagement and response.



# SLIPP: A Collaboration Not an Agency

Vision: a sustainable hub for landslide information and action



Community Collaborators  
*Research and education at the intersection of people, forests, and hydrology*

& Haida

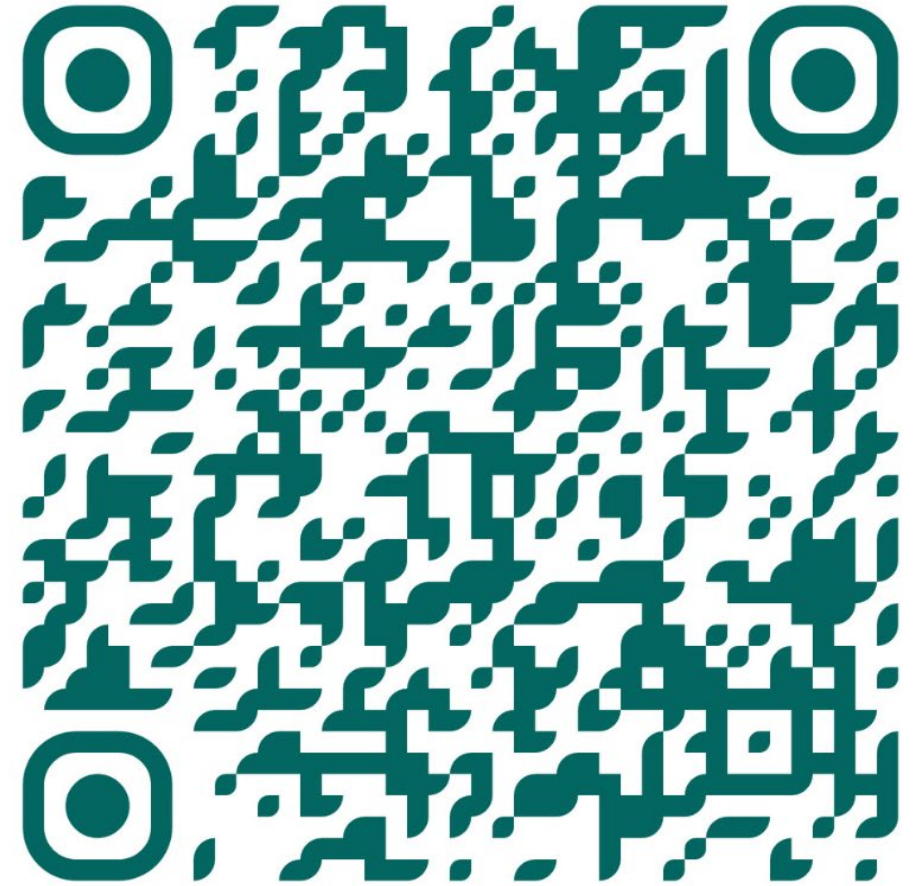


United States Department of Agriculture  
Natural Resources Conservation Service



# Southeast Alaska Landslide Risk Reduction Strategic Plan

February 2026



## Landslides: More than Just Science

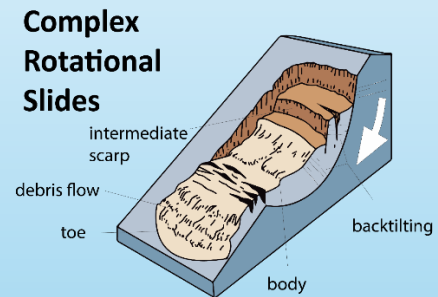
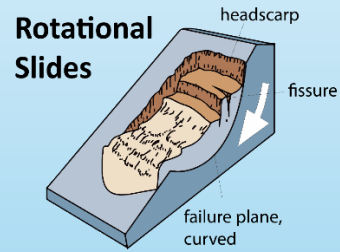
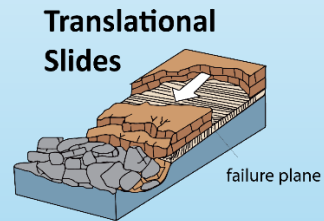
Scan this for the Strategic Plan QR CODE

# SLIPP Workshop 2026 Brings It All Together

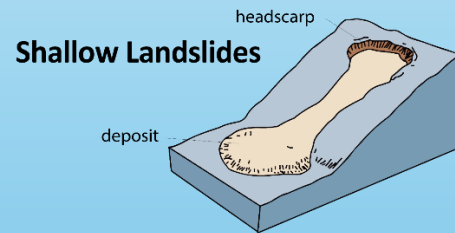
- Emergency management personnel
- Scientists
- Engineers
- Mental health professionals
- Insurance
- Community lived experiences



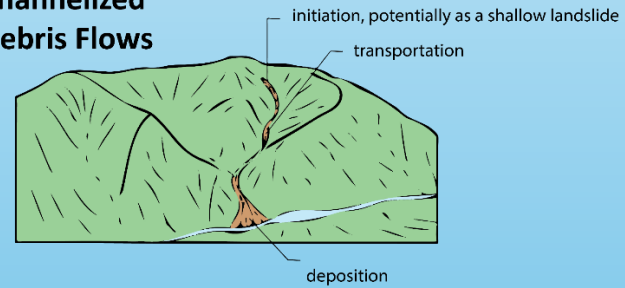
# Landslide Types



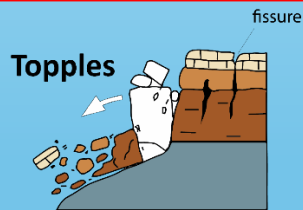
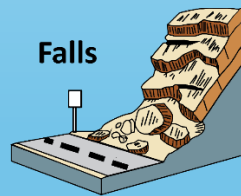
## Types of Flows

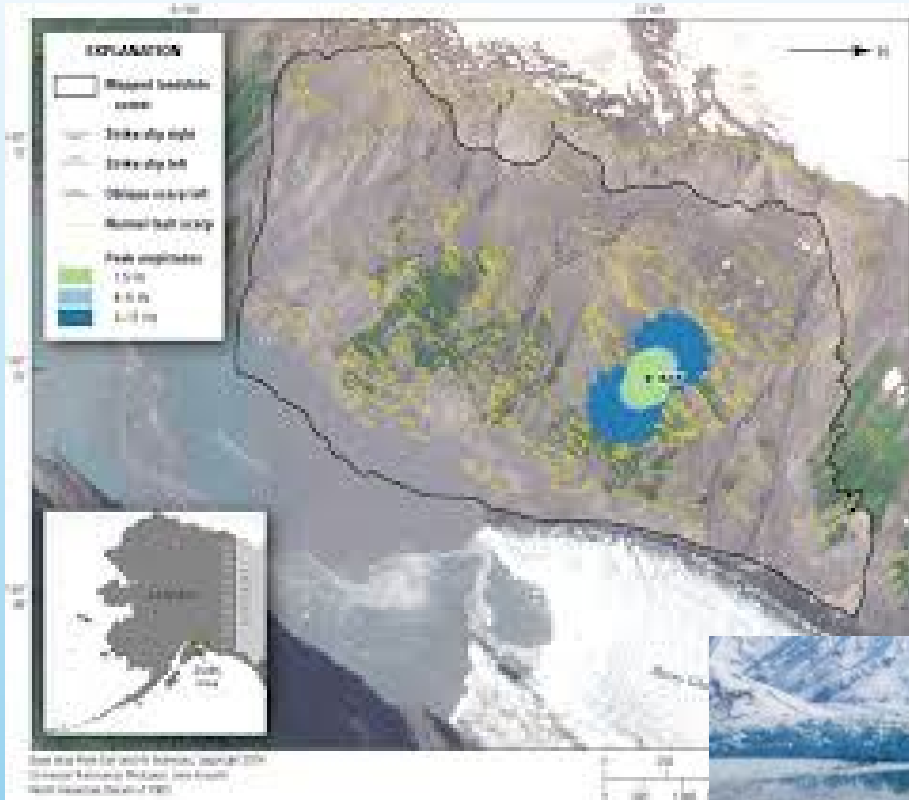


## Channelized Debris Flows

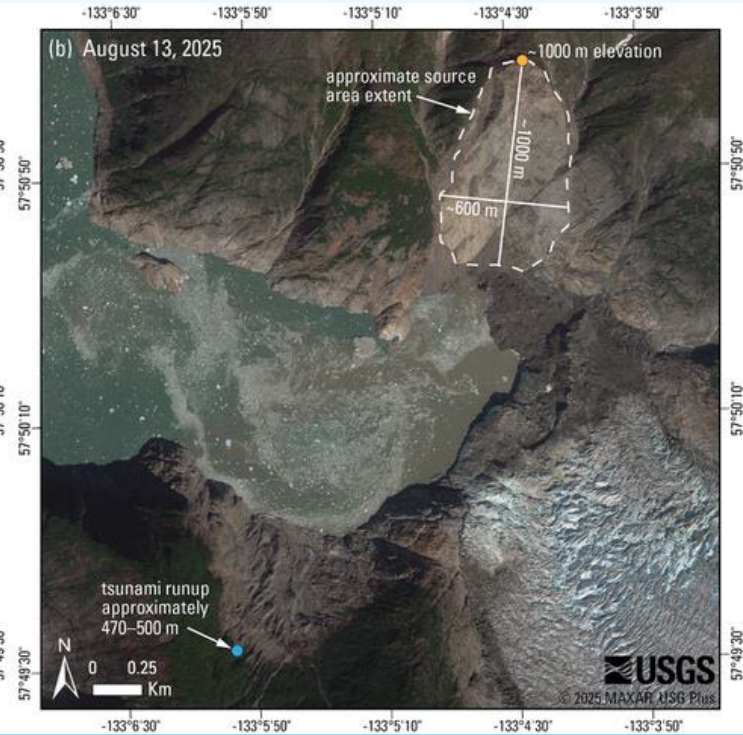
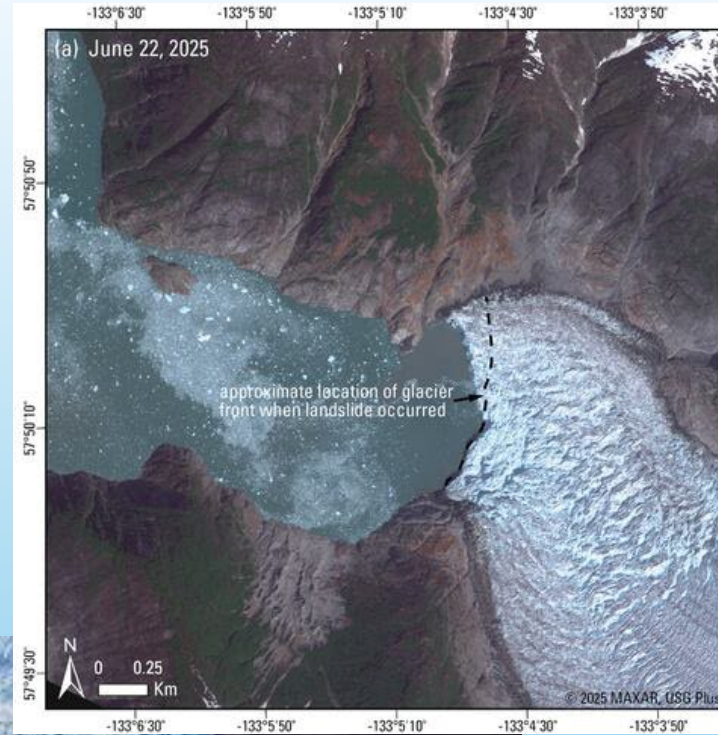


## Other types of Slope Failures





Barry Arm



Tracy Arm

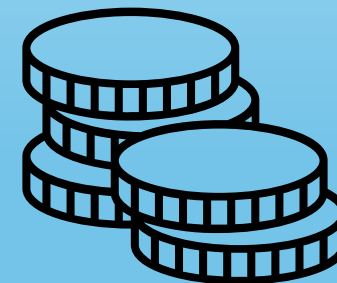
**T-SLIPS too**



Disenchantment Bay, Yakutat

**The National Landslide Preparedness Act (NLPA; P.L. 116-323, 43 U.S.C. §§3101 et seq.) directed the Secretary of the Interior, acting through the Director of the USGS, to establish a National Landslide Hazards Reduction Program (NLHRP).**

*NLHRP activities include identifying, mapping, assessing, and researching landslide hazards; responding to landslide events; and coordinating with state, local, territorial, and tribal entities to reduce landslide risks. In particular, the act required development of a national strategy for landslide risk reduction that includes goals and priorities for the NLHRP and an interagency plan that details programs, projects, and budgets to implement the national strategy.*





# LANDSLIDE LOSSES: Lives, Security, Financial, Resources



A scenic landscape featuring a gravel stream in the foreground, a pond reflecting the sky and trees, and a forested area with mountains in the background under a cloudy sky.

# **Resources Needed for:**

**Mapping**

**Monitoring**

**Alert Systems**

**Response and Recovery**

**Training**

**Public Awareness**

**Maintenance of Systems**

**Land Use Planning**

**THANK YOU, REPRESENTATIVE HIMSCHOOT**  
**And THANK YOU FOR YOUR INTEREST**

Lisa Busch  
SLIPP director/coordinator

[alaskalandslides@gmail.com](mailto:alaskalandslides@gmail.com)

Alaskalandslides.org  
Substack <https://seaklandslideworkinggroup.substack.com>

