

---

# Dock Talk

*The Work of Alaska  
Longshoremen*

A Lunch and Learn presentation sponsored by Senator Jesse Kiehl & Representative Zack Fields



# Strength at the Dock

The International Longshore and Warehouse Union (ILWU) Alaska Division is vital to the state's maritime industry, ensuring efficient cargo operations, cruise handling, and logistics in **15 coastal communities**.

## Who We Are:

- **235** registered members, **300+** casual workers, and **800+** Alaska-based family members.
- Skilled labor supporting **container carriers, general cargo, cruise ships, and commercial driving** across the state.





# Statewide Operations & Economic Impact

ILWU plays a **critical role** in Alaska's economy, handling **millions of tons** of cargo and supporting industries like **fishing, tourism, timber, and energy**.

## Where We Work:

- **Southeast** (Cruise & Timber): Juneau, Ketchikan, Sitka, Wrangell, Klawock, Haines
- **Southwest** (Seafood & Logistics): Kodiak, Dutch Harbor
- **Southcentral & Western Alaska** (Cruise, Cargo & Industry): Seward, Whittier, Cordova, Homer, Valdez, Nome, Adak



# Commitment to Safety & the Future

ILWU prioritizes **safety, innovation, and long-term sustainability** in Alaska's ports.

## Safety & Training:

- Strict safety protocols protect workers and ensure efficient port operations.

## Innovation & Future Growth:

- **Shore power initiatives** (Seward, Kodiak) reduce environmental impact.
- **Advancements in cargo handling & cruise logistics** streamline operations.
- **Expanding infrastructure & exploring renewable energy** to keep Alaska's ports competitive in global trade.





# Southeast Alaska

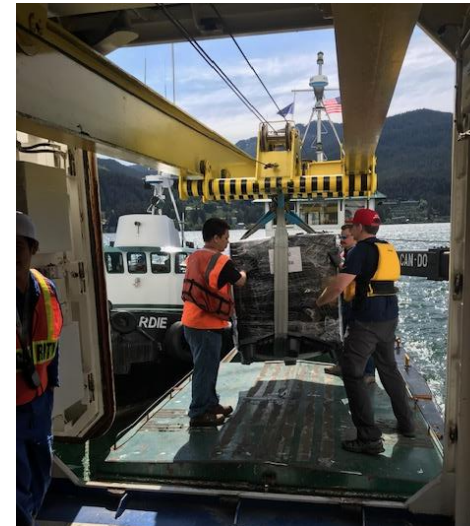
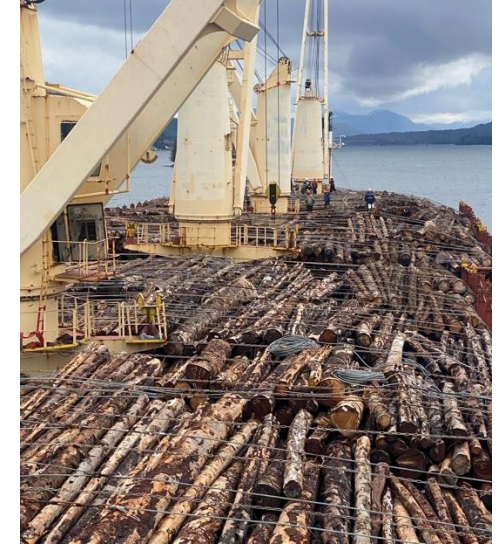
- **Major Ports:** Juneau, Ketchikan, Sitka, Wrangell, Klawock, Haines
- **Primary Industries:** Cruise tourism & log exports
- **Key Operations:**
  - Cruise ship docking, provisioning, baggage handling
  - Log shipments for export markets



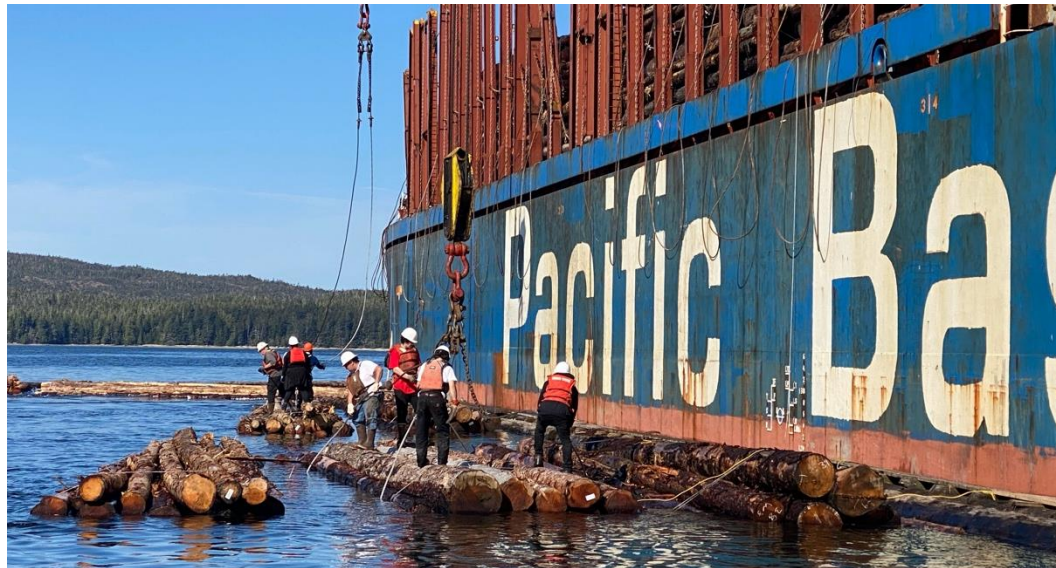


# Workforce & Cargo in Southeast

- **Roles:** Dock workers, stevedores, equipment operators, logistics & security
- **Cargo:**
  - Cruise industry (provisions, baggage, waste management)
  - Log exports (primarily from Ketchikan & Klawock)



# Challenges & Infrastructure Needs in Southeast



- **Challenges:**
  - High seasonal workload
  - Managing over **1.5 million cruise passengers annually**
  - Reduced logging & resource development
- **Needed Upgrades:**
  - Expanded berths and deep-water docking
  - Improved passenger logistics



# Economic Impact & Future Outlook Southeast



- **Tourism contributes millions** to local economies.
- **Log exports sustain timber-related jobs.**
- Future improvements focus on **expanding port capacity & efficiency.**



# Southwest Alaska



- **Major Ports:**  
Kodiak, Dutch Harbor
- **Primary Industry:**  
Commercial fishing & seafood exports
- **Key Facts:**
  - **Dutch Harbor:**  
#1 U.S. fishing port for over 25 years
  - Handles 8.3+ billion pounds of seafood annually



# Workforce & Cargo in Southwest

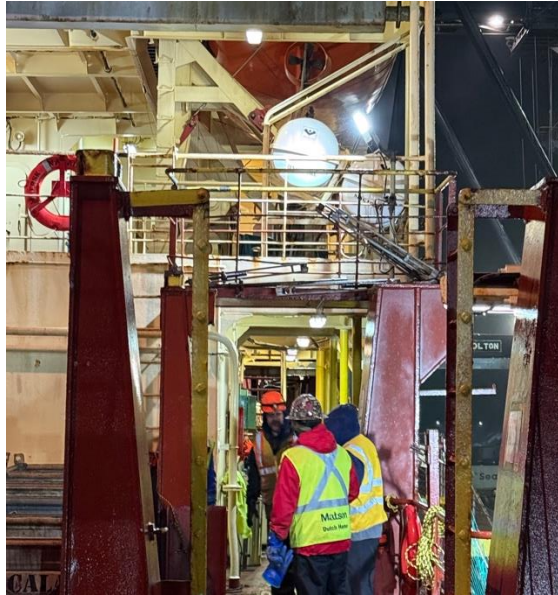


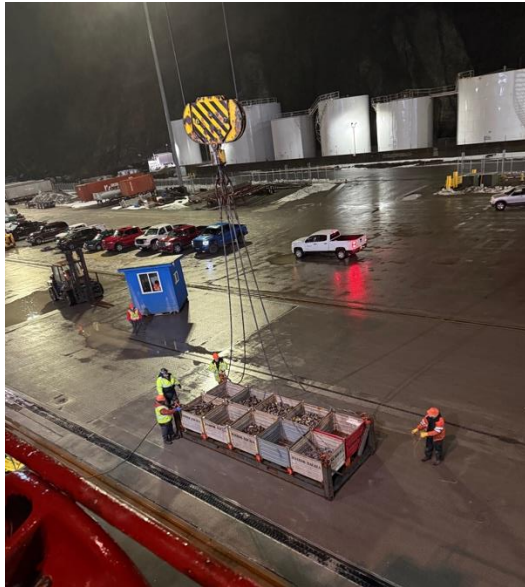
- **Roles:** Longshoremen, operators, mechanics, security staff
- **Cargo:**
  - Domestic: Food supplies, construction materials
  - Export: Frozen seafood, primarily for Asian and U.S. markets



# Challenges & Infrastructure Needs in Southwest

- **Challenges:**
  - Harsh weather conditions
  - Limited housing & high cost of living
- **Needed Upgrades:**
  - Cold storage expansion
  - Improved port logistics & mooring



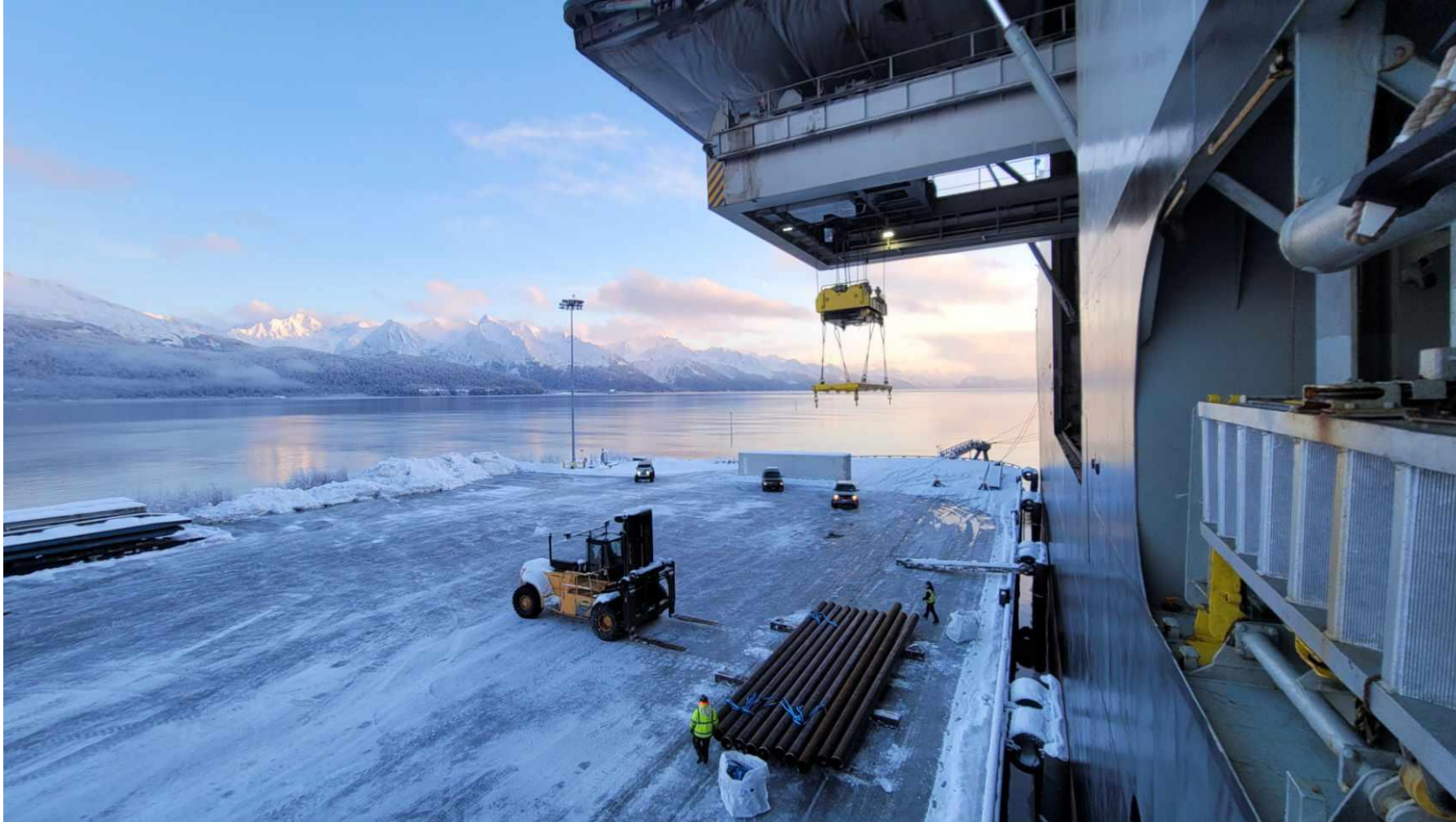


## Economic Impact & Future Outlook Southwest

- Fishing industry **sustains entire communities** through tax revenue and jobs.
- Kodiak leads in renewable energy (98%+ clean energy usage).
- Potential for geothermal energy investment in Dutch Harbor.



# Southcentral & Western Alaska



- **Major Ports:** Seward, Whittier, Cordova, Homer, Valdez
- **Primary Industries:** Cargo handling, cruise ship operations, and energy logistics
- **Unique Feature:** Seward is the northernmost deep-water ice-free port in the U.S.

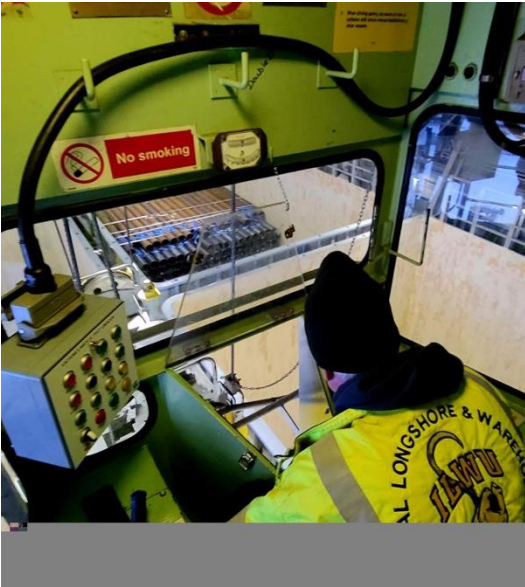
# Workforce & Cargo

## Southcentral/Western

- **Roles:** Equipment operators, longshoremen, clerks, dispatchers
- **Cargo:**
  - **Seward:** Cruise Ships, Cargo ships (pipes, frac sand, building materials)
  - **Whittier:** Cruise ships (largest turnaround port by passenger count)
  - **Cordova, Homer, Valdez:** Containers of frozen fish & general cargo







# Challenges & Infrastructure Needs in Southcentral / Western

- **Challenges:**

- Extreme winter weather (e.g., -24°F with windchill recorded in 2025)
- Safety concerns with cruise ships docking without tug assistance

- **Needed Upgrades:**

- **Whittier's new cruise terminal (2025 launch)**
- **Seward's dock expansion (2026)** – First port in Alaska with **shore power battery storage**

# Economic Impact & Future Outlook Southcentral / Western

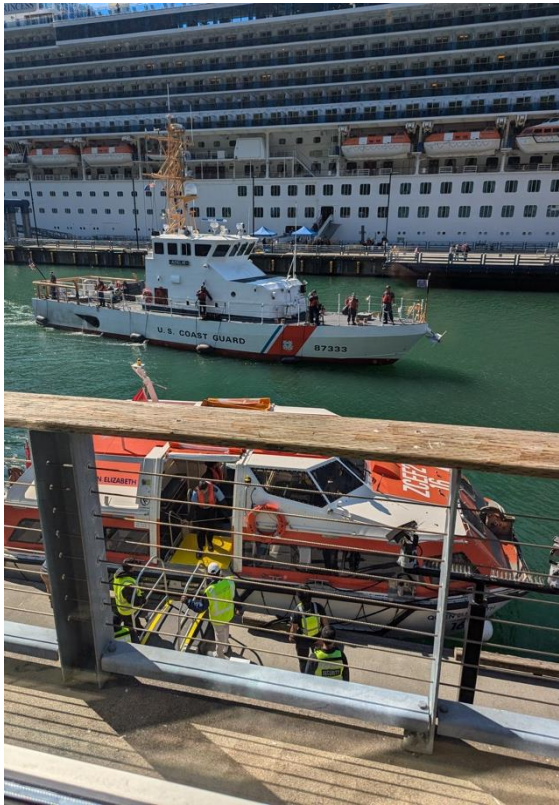


- ILWU's labor supports Alaska's transportation network and statewide supply chain.
- Infrastructure investments will enhance long-term efficiency & safety.





# ILWU's Future in Alaska



**Safety First** – Enforcing strict protocols to protect workers and ensure efficient operations.

**Shore Power Expansion** – Reducing emissions in ports like Seward and Kodiak.

**Smarter Logistics** – Enhancing cargo handling and cruise operations.

**Infrastructure Growth** – Investing in port upgrades and renewable energy for long-term sustainability.

