

# Commercial Fisheries Entry Commission



House Finance Subcommittee

February 13, 2025

## CFEC's Relationship with the Alaska Legislature

---

Alaska Statute 16.43.980 Report and recommendations.

(a) The commission shall prepare an annual report and notify the legislature that it is available. The report must include but not be limited to the following:

....

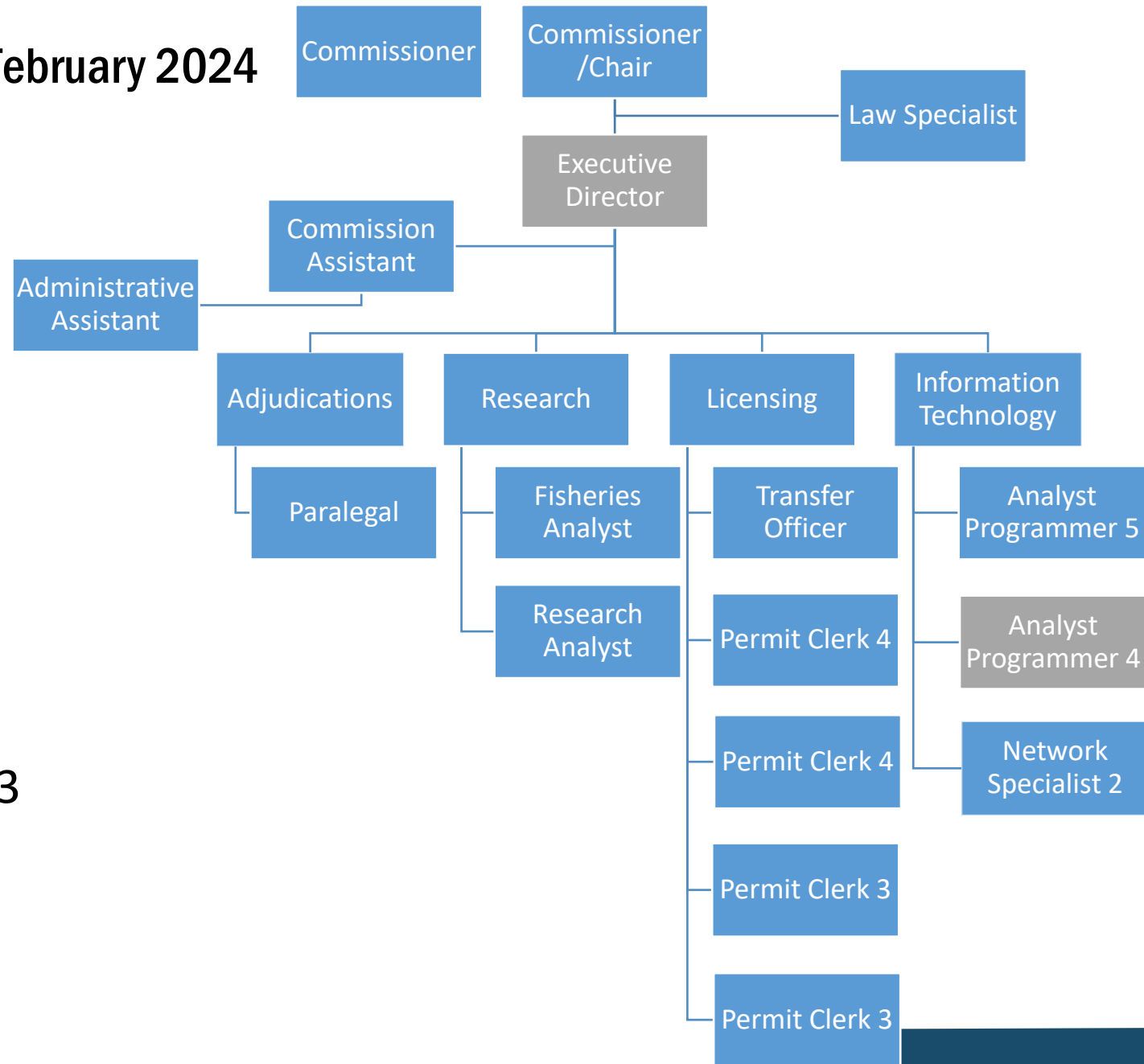
(2) Recommendations for additional legislation relating to the regulation of entry of participants and vessels into Alaska commercial fisheries.

# CFEC - Small Footprint / **Big** Impact

---

- Permitting the fleet
  - 16,600 permits annually / 7,300 vessels licensed. A staff of less than 20 people -
  - Supports a fleet that earned \$1.29 billion in 2023. 2021/2022 estimated ~\$6.0 billion in economic impact for Alaska
- Direct financial contributor to State of Alaska's budget
  - Use 60% of what is collected
- Keeper of confidential and critical commercial fishery data
  - Service to public and private agencies – enforcement, child support, taxation, research, economic development.
- Protects integrity of the limited entry program
  - Limited entry permits valued at \$749 million

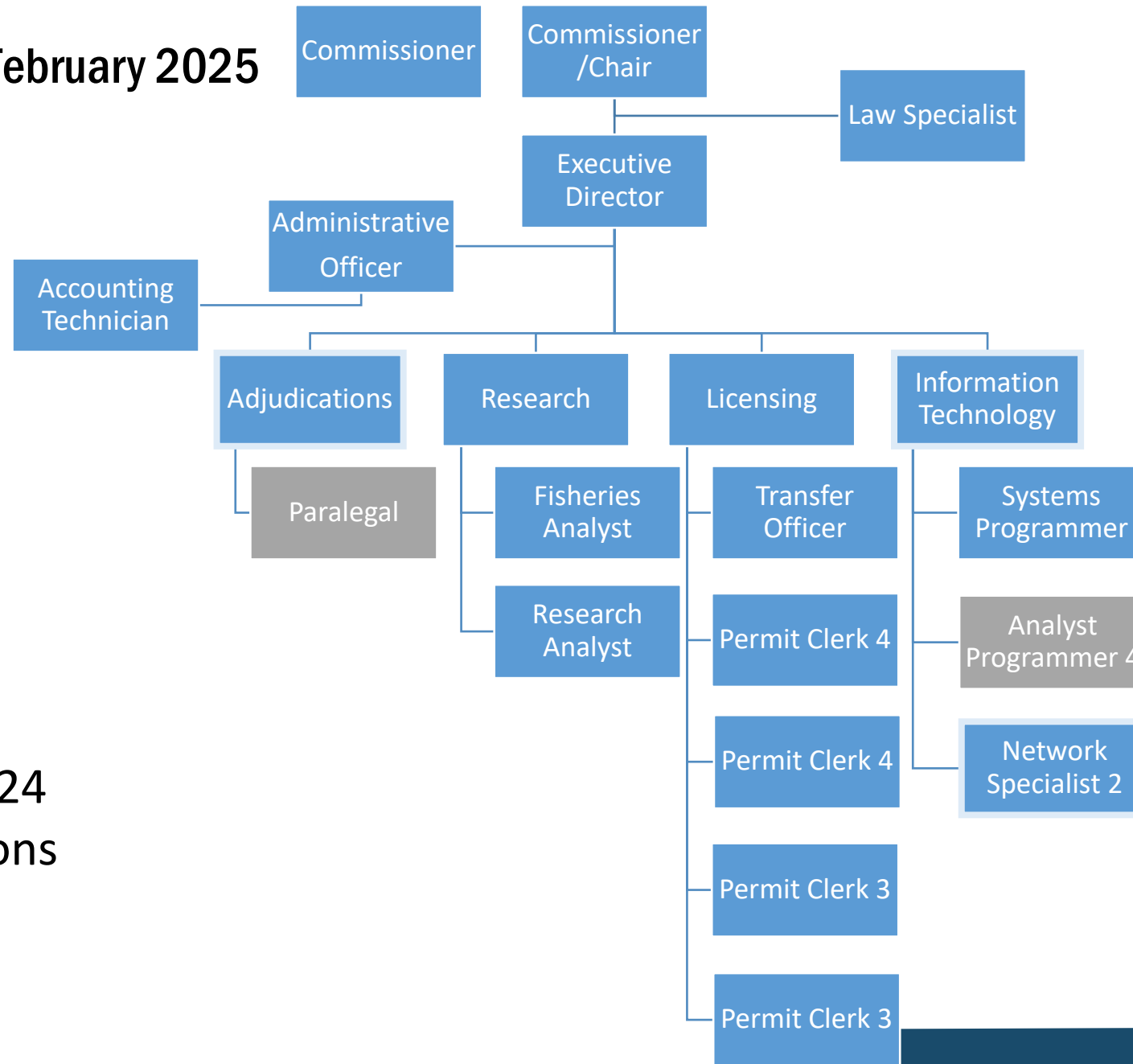
# Organization Chart – February 2024



- 21 FT PCNs
- 7 New Hires in 2023
- 2 Currently Vacant



# Organization Chart – February 2025



- 21 FT PCNs
- 10 New Hires in 2024
- 3 Internal Promotions
- 2 Currently Vacant



# Role of CFEC past and present

---

- Limiting Entry
  - Established limits to participation to 68 fisheries
  - Reviews continue albeit much fewer
  - **Prince William Sound Shrimp Pot Fishery limitation process – July 2024**
- Optimum Numbers Studies
  - Determine if limited fisheries have the correct number of permits
  - Three done prior to 2022
  - **Modified Optimum Numbers Study on Cook Inlet Set Gillnet Eastside Fishery - Completed May 2023**
  - **Kodiak Herring Food and Bait Seine/Gillnet and Trawl – Completed October 2024 and January 2025**
  - Request for Prince William Sound Salmon Drift Gillnet fishery optimum numbers study
- Buyback Programs
  - None to date
  - **HB195 and SB82 for the Cook Inlet Set Gillnet Eastside Fishery**
  - **Considering for Kodiak Herring Food and Bait Trawl Fishery**

## CFEC Going Forward

---

- IT systems modernization
- Records reduction
- Participation at Board of Fisheries meetings
- Proposed regulations for Cook Inlet salmon Eastside set gillnet fishery
- Discussions with regions on permit retention
- Assist in seafood industry recovery including Legislative Task Force

## 2024 Outcomes

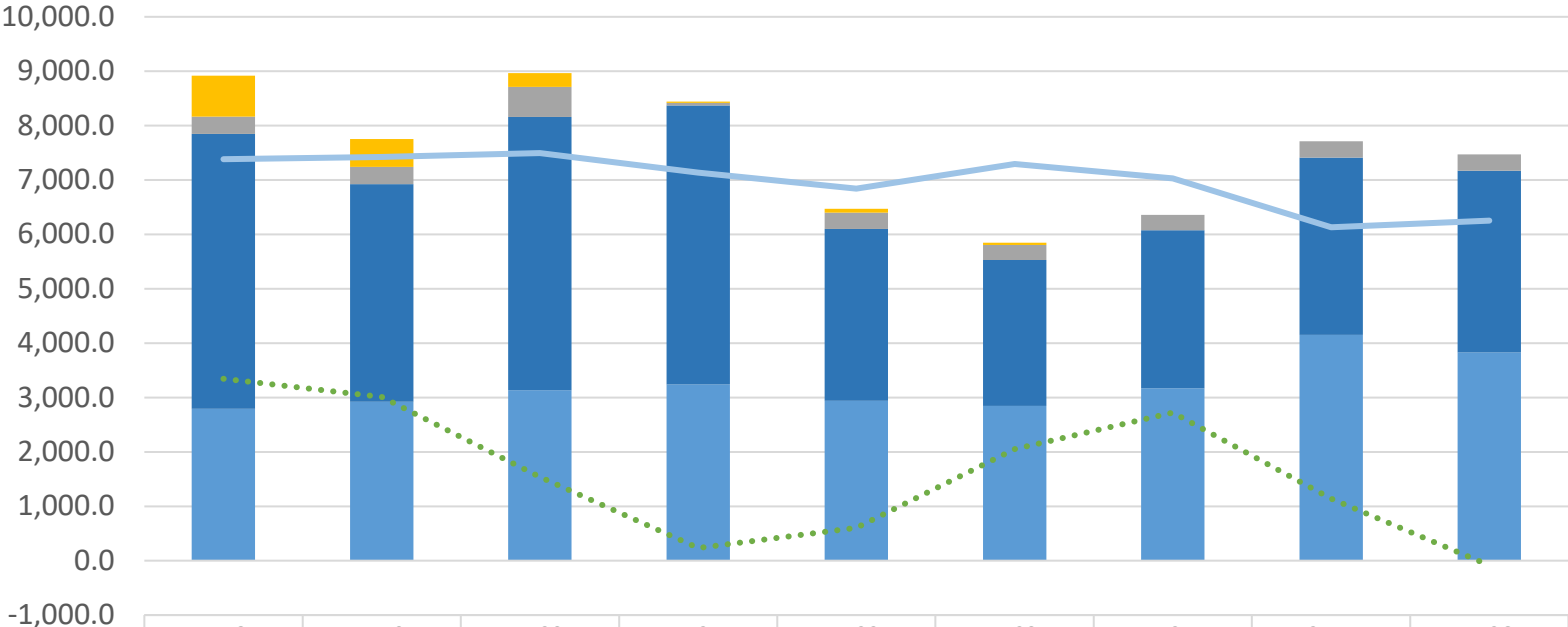
---

- 6 Commission decisions issued
- 16 Adjudication decisions issued
- 16,639 commercial fishing permits issued
- 7,309 vessel licenses issued
- 1,189 permit transfers processed
- Licensing records scanning project - 77% complete
- \$5.0m processed through online renewal (LEON)
- IT staffed and moving on licensing system upgrade
- Support for Legislative efforts – HBI9, SB82/HBI95, Seafood task force
- Numerous research reports
  - 3 Board of Fisheries Reports
  - 2 optimum numbers report
  - 2023 Gross earnings report
  - Limitation review of PWS commercial shrimp
  - Emergency transfers report
  - Kodiak seine vessel cost survey report
  - Monthly permit value reports
  - Changes in permit distribution report
  - Mean and quartile earnings report
- Stabilizing staff – including heighten expertise in administrative functions



# Fiscal Year 2024-FY26 Overview

CFEC Receipts FY18-FY26 Governor  
(\$ in thousands)



	FY18 Actuals	FY19 Actuals	FY20 Actuals	FY21 Actuals	FY22 Actuals	FY23 Actuals	FY24 Actuals	FY25 Mgt Plan	FY26 Budget
Capital Expenditures	752.7	508.6	256.7	21.6	70.8	45.1	0.0	0.0	0.0
Fishermen Fund	319.5	321.1	551.6	46.5	299.6	277.3	279.8	300.0	300.0
Commercial Fisheries Expenditures	5,052.0	4,001.7	5,026.3	5,135.3	3,157.4	2,679.5	2,909.3	3,262.1	3,342.1
CFEC Expenditures	2,794.0	2,920.6	3,131.5	3,238.0	2,941.7	2,846.9	3,168.9	4,151.6	3,830.1
CFEC Receipt Revenue	7,381.8	7,424.4	7,494.7	7,133.6	6,839.6	7,296.7	7,028.0	6,130.4	6,250.0
Carryforward Balance (as of July 1 of FY)	3,344.7	3,011.2	1,539.9	232.1	602.1	2,050.1	2,720.1	1,136.8	(85.40)



# Commercial Fisheries Entry Commission Budget Overview – Expenditures

Expenditures	FY24	FY25	FY26
	Actuals	Management Plan	Governor
In Thousands of Dollars			
1000 Personal Services	\$ 2,291.3	\$ 3,067.10	\$ 3,207.60
2000 Travel	\$ 24.0	\$ 28.90	\$ 28.90
3000 Services	\$ 748.3	\$ 970.20	\$ 508.20
4000 Commodities	\$ 105.3	\$ 85.40	\$ 85.40
8000 Miscellaneous	\$ -	\$ -	\$ -
Totals	\$ 3,168.9	\$ 4,151.6	\$ 3,830.1



# Commercial Fisheries Entry Commission Budget Overview – Funding

	FY24	FY25	FY26
	Actuals	Management Plan	Governor
Funding Source(s)	In Thousands of Dollars		
1201 CFEC Receipts (DGF)	\$ 3,168.9	\$ 4,151.60	\$ 3,830.10
1201 CFEC Total Receipts	\$ 7,028.0	\$ 6,130.0	\$ 6,250.0
Positions			
Permanent Full Time	21	21	21



## FY2026 Proposed Budget Changes

---

Budget reflects decrement of \$450.0 to return to base budget. In FY25, Legislature authorized \$450.0 for a 3-year increment (FY25-FY27). This is ongoing.

\$140.5 increase in personal services related to salary, insurance, and retirement increases from SB259.

Reduction of \$12.0 in services to ADF&G facilities operations and maintenance



# Thank you

---

## Questions?

Glenn Haight, Commissioner  
Glenn.haight@alaska.gov  
(907) 790-6942

Rick Green, Commissioner  
Rick.green@alaska.gov

