

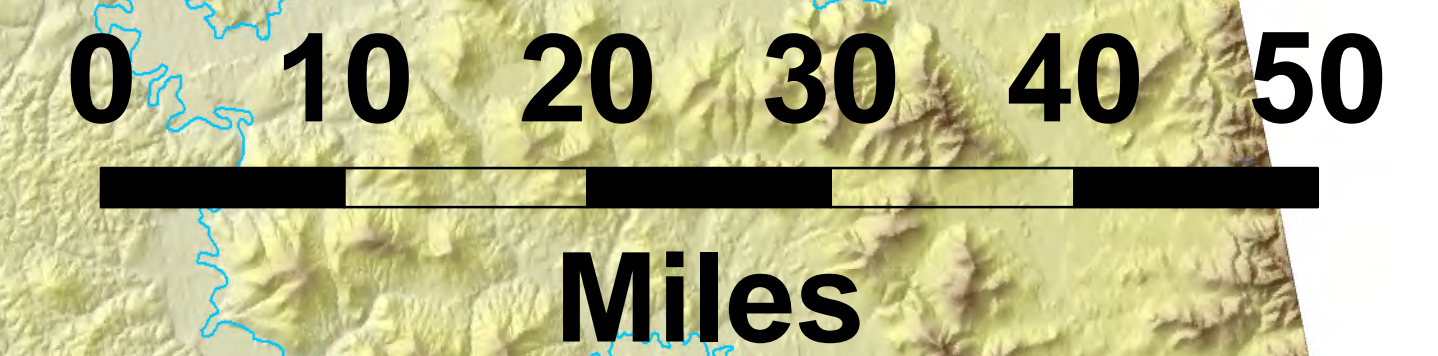
# Nenana and Yukon Flats Basins



Tasmanites  
in oil shale

Yukon Flats Basin  
7.6 million acres

Birch Creek Exploration Area:  
619,326 acres



Stevens Exploration Area:  
392,130 acres

Beaver Exploration Area:  
471,707 acres

TAPS Pump  
Station 6

TAPS Pump  
Station 7

Nenana License Area:  
482,941 acres

FAIRBANKS

Nenana Basin  
800,000 acres

Unocal Nenana #1  
(1963)

Nunivak #1  
(2009)

Totek Hills #1  
(1984)

PetroStar  
Refinery  
22,000 bpd

Flint Hills  
Refinery  
220,000 bpd

Bitumen  
Outcrops

Marine  
Glenn Shale  
outcrop

- Oil and Gas Basins
- Doyon Lands in Basins
- Yukon Flats Exploration Areas
- Nenana License Area
- North Nenana License Area
- Seismic Lines
- Contracted 2012 Seismic Lines
- Fall 2011 Airborne Gravity Survey
- Well Sites
- Roads
- Railroad
- Trans Alaska Pipeline System
- Electric Transmission Lines