

House Bill 358

CAREER AND TECHNICAL EDUCATION GRANTS

Rep. Bill Elam – House District 8



What HB 358 Does

Establishing a Statewide Mobility Grant Program for Education



Student Mobility

The program allows students to attend CTE programs in other districts, enhancing access to essential training opportunities.

Incentive Grants

Performance-based incentive grants reward outcomes like industry certifications, ensuring alignment between education and workforce needs.

Modernization Support

Facility and equipment modernization grants improve existing CTE programs, enabling districts to offer high-quality training aligned with industry standards.

Expanding Access

Providing Opportunities Across Alaska's Educational Districts



District Flexibility

Students can attend CTE programs in neighboring districts, allowing for greater access to specialized training options that may not be available locally.

Reimbursement Support

Host districts receive reimbursement for incremental costs, ensuring that they can support incoming students without financial strain on their budgets.

Focus on Rural Access

The program prioritizes rural and remote districts, addressing unique challenges faced by air and ferry-dependent communities seeking educational resources.

Incentivizing Results

Focusing on measurable outcomes for workforce success



Performance Incentives

The program emphasizes rewards for achieving industry certifications, ensuring alignment with workforce needs and enhancing students' career readiness.

Real-World Outcomes

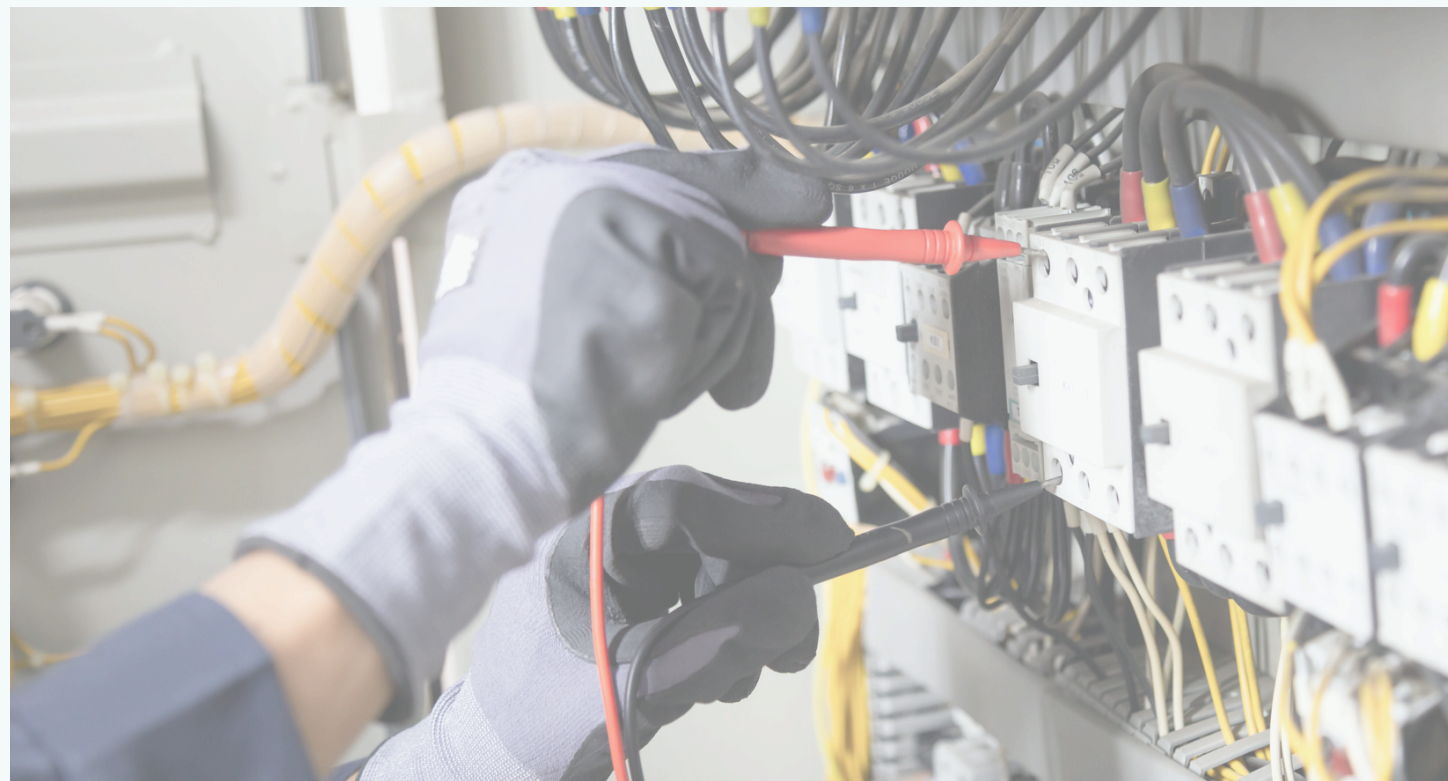
The bill prioritizes practical experiences through apprenticeships and dual credit, connecting education directly to job placement and workforce demands.

No arbitrary cap on performance incentives

By imposing no regulatory cap on performance grants, HB 358 encourages continuous improvement and innovation in CTE programs across Alaska.

Districts Answering the Call

Growth in Career & Technical
Education Programs Across Alaska



Program Expansion

Many districts have expanded their CTE offerings, including welding and healthcare, to meet local industry demands and student interests.

Dual Credit Growth

Increased dual credit programs allow high school students to earn college credits, preparing them for further education and career readiness.

Strong Partnerships

Collaborations with local businesses and industries enhance CTE pathways, ensuring students gain relevant skills and experience for the workforce.

Strengthening Workforce

Creating pathways for career-oriented education in Alaska



Skilled Labor Shortages

Alaska faces ongoing shortages in skilled labor across multiple industries, impacting the economy and growth potential for local businesses.

Youth Outmigration

Many young adults are leaving Alaska for better opportunities elsewhere, further exacerbating the skills gap and labor shortages in the state.

In-State Talent Development

By connecting education with workforce needs, we can build a robust pipeline, fostering local talent and reducing dependency on imported labor.

Why This Matters



Pro-Student

HB 358 ensures that students can have access to **valuable career training** regardless of their geographic location in Alaska.

Pro-Rural Access

This initiative specifically supports rural communities, removing barriers to education and **creating more opportunities** for underserved populations.

Pro-Workforce

By aligning education with industry demands, the bill addresses the **skilled labor shortages** that Alaska's economy currently faces.

Results-Focused

HB 358 prioritizes measurable outcomes, ensuring that funding is directed toward programs that **produce skilled graduates** ready for the workforce.

Questions